

**MEDIA CONTACT**  
Rosa Mendez  
[detrmedia@detr.nv.gov](mailto:detrmedia@detr.nv.gov)

**PRESS RELEASE**



**ONE NEVADA - Growing a Skilled, Diverse Workforce**  
**RESEARCH AND ANALYSIS BUREAU**

**STEVE SISOLAK**  
Governor

**ELISA CAFFERATA**  
Director

**DAVID SCHMIDT**  
Chief Economist

## SUB-STATE PRESS RELEASE

For Immediate Release  
September 21, 2021

# August unemployment rate dips slightly in Las Vegas while Reno and Carson City remain steady

According to the Department of Employment, Training and Rehabilitation's ([DETR](#)) August 2021 economic report, Nevada's seasonally adjusted unemployment rate was 7.7 percent in August 2021 which decreased by 1.1 percent from July 2021. Seasonally adjusted estimates account for regularly seen economic patterns, with the following estimates not seasonally adjusted.

In the three Metropolitan Statistical Areas (MSA), the unemployment rates were 8.2 percent in the Las Vegas area, 4.2 percent in Reno, and 4.6 percent in the Carson area in August 2021.

In Nevada's counties the lowest unemployment rate was in Eureka County at 3.2 percent, and Clark County had the highest rate at 8.2 percent. For a look at unemployment rates in your county visit our [Area Profiles Page](#).

For the latest information on the Nevada economy including employment, unemployment, and unemployment insurance check out our monthly [Labor Market Overview](#), or for the latest on your area take a look at our agency's monthly [Local Area Labor Market Overview](#).

Additional information on unemployment estimates along with a complete breakout of unemployment in counties, cities, and other areas in Nevada can be found by visiting our [Local Area Unemployment Statistics](#) page. Additionally, employment estimates by industry can be found at our department's [Current Employment Statistics](#) page.

—###—

### ABOUT THE RESEARCH AND ANALYSIS BUREAU:

The [Research and Analysis Bureau](#) is Nevada's premier source for labor market information. A part of DETR, the Bureau is responsible for creating, analyzing, and reporting Nevada's labor market information, in cooperation with the United States Bureau of Labor Statistics (BLS).

**DAVID SCHMIDT**  
Chief Economist



**STEVE SISOLAK**  
Governor

**Elisa Cafferata**  
Director

## Nevada Local Area Labor Market Overview

August 2021

Published on September 21, 2021

Initial claims continued their downward trend in August with claims declining to 7,826 (-20.1 %) initial claims in Nevada. August's total follows a seasonal trend of declining initial claims in the spring and summer months.

The state had an unemployment rate of 7.7 percent in August, unchanged from the previous month and a significant improvement over the 14.5 percent in August of 2020. When looking at non-seasonally adjusted data, we see that the unemployment rate in Clark county dropped by 1.1 ending at a rate of 8.2 percent. Washoe county declined 0.8 to a rate of 4.2 percent while Carson City county dropped to 4.6 percent, down from 5.3 percent in July. Eureka county remained unchanged while all other counties saw a decrease in their unemployment rate in August. Within the state, rates ranged from 3.2 percent in Eureka County to 8.2 percent in Clark County. Within Clark County, the city of North Las Vegas has the highest unemployment rate in the state at 9.5 percent.

Figures for unemployment estimates come from the Local Area Unemployment Statistics (LAUS) program, a state/federal partnership sponsored by the Bureau of Labor Statistics (BLS-LAUS). This program produces monthly and annual employment, unemployment, and labor force data for census regions, states, counties, metropolitan areas, and many large cities, based on place of residence. For more on LAUS data or for a look at estimates in your area, visit our [LAUS Page](#), and for a look that the economic profile of Nevada, the metropolitan areas, or your county visit our [Area Profiles](#) Page.

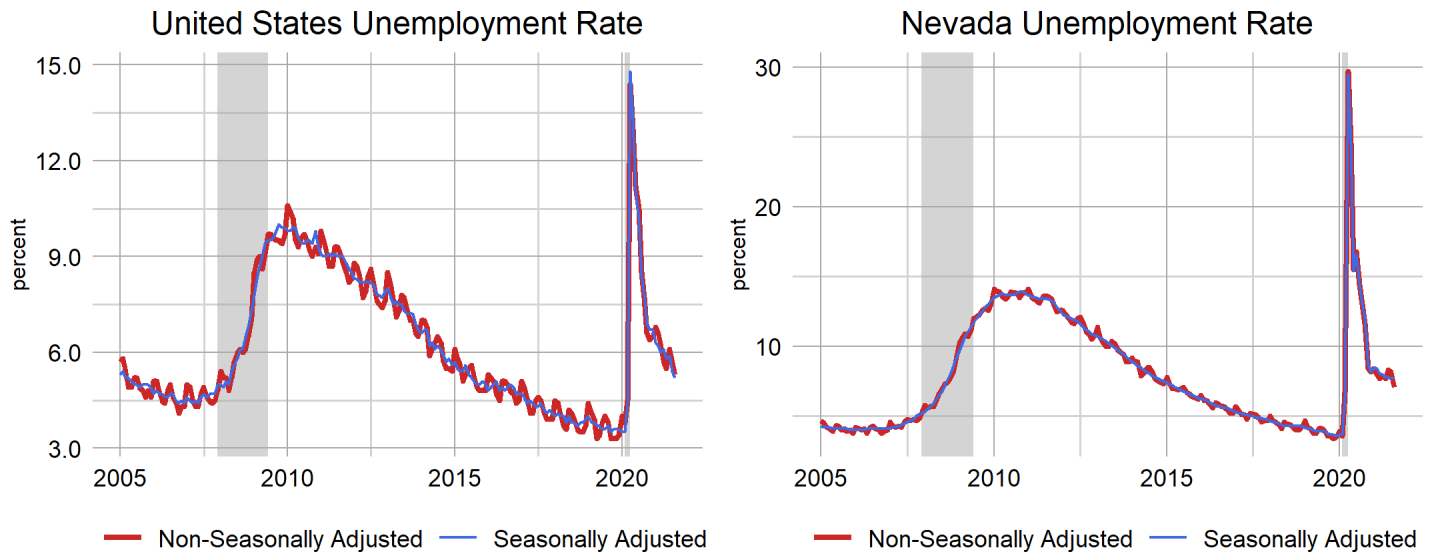
### U.S. & Nevada Local Area Unemployment Statistics

Area	Labor Force	Employed	Unemployed	Unemployment Rate	Labor Force Participation Rate	Employment Population Ratio
<b>US</b>						
U.S.	161,788,000	153,232,000	8,556,000	5.3	61.8	58.6
U.S. SA	161,537,000	153,154,000	8,384,000	5.2	61.7	58.5
<b>State</b>						
Nevada	1,533,342	1,424,036	109,306	7.1	60.6	56.2
Nevada SA	1,571,738	1,451,340	120,398	7.7	62.1	57.3

SA denotes seasonally adjusted data

Seasonally adjusted estimates account for regularly seen seasonal employment patterns such as jobs associated with holiday hiring, holiday and weather seasons, or other jobs with seasonal components. The result of a seasonally adjusted estimate is usually a smoother estimate from which underlying economic trends can be seen. Adjusted estimates are in the summary table above, and in many of the other tables and figures throughout this document.

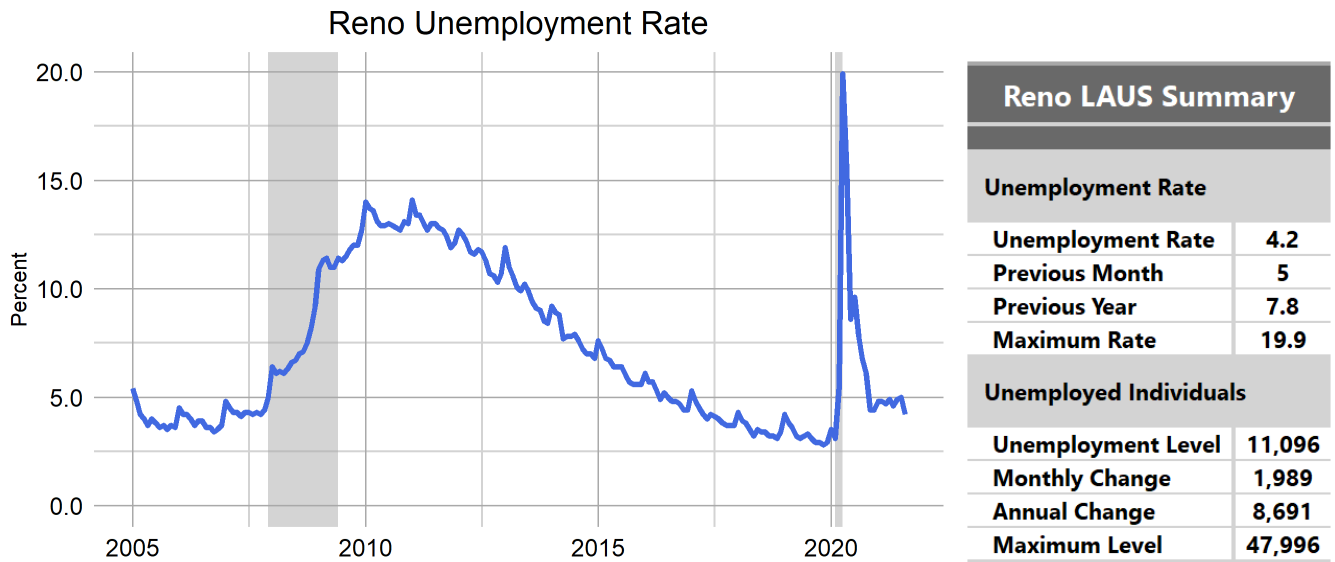
Nevada’s unemployment rate was 7.7 percent in August 2021, unchanged from 7.7 percent in July 2021, and down from 14.5 percent in August 2020, seasonally adjusted. The number of unemployed individuals decreased by 1,194 since July 2021 for a current level of 120,398 people, which is 100,438 less unemployed people than August 2020. The labor force in Nevada is currently 1,571,738 people, which is 5,851 less people than July 2021, and is up 48,162 people since August 2020.



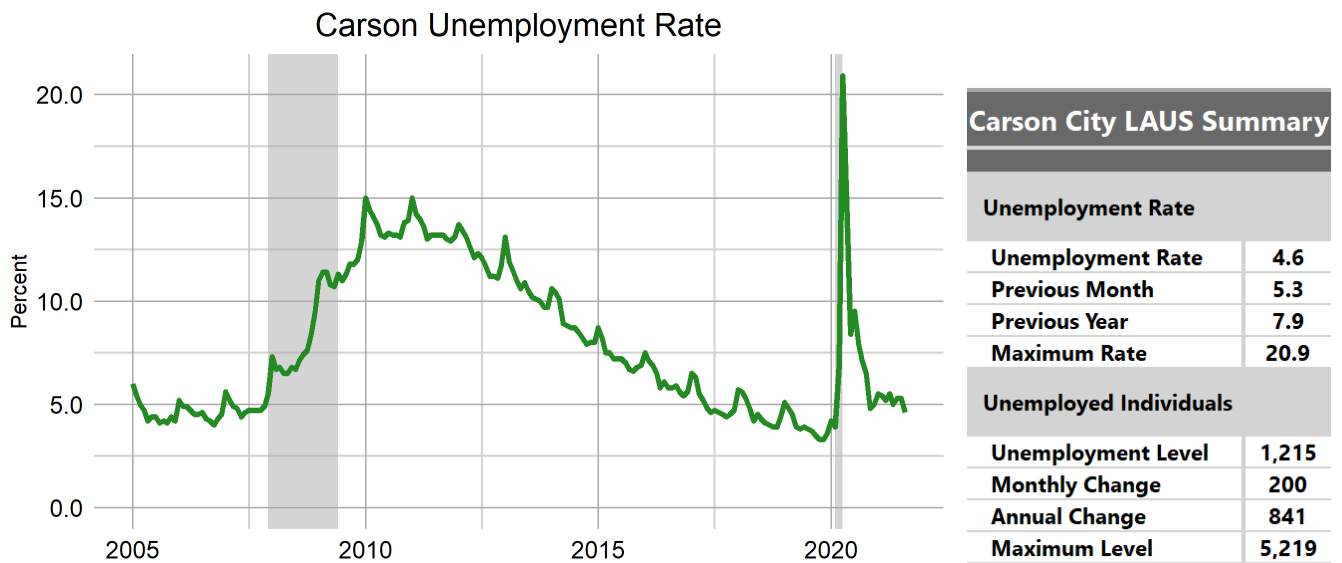
The Las Vegas MSA’s unemployment rate was 8.2 percent in August 2021, decreasing from 9.3 percent in July 2021, and down from 16.9 percent in August 2020, non-seasonally adjusted. The number of unemployed individuals decreased by 14,421 since July 2021 for a current level of 91,296 people, which is 97,411 less unemployed people than August 2020. The labor force in Las Vegas is currently 1,119,780 people, which is 11,660 less people than July 2021, and is up 527 people since August 2020.



The Reno MSA’s unemployment rate was 4.2 percent in August 2021, decreasing from 5 percent in July 2021, and down from 7.8 percent in August 2020, non-seasonally adjusted. The number of unemployed individuals decrease by 1,989 since July 2021 for a current level of 11,096 people, which is 8,691 less unemployed people than August 2020. The labor force in Reno is currently 262,702 people, which is 1,408 less people than July 2021, and is up 8,252 people since August 2020.



The Carson City MSA’s unemployment rate was 4.6 percent in August 2021, decreasing from 5.3 percent in July 2021, and down from 7.9 percent in August 2020, non-seasonally adjusted. The number of unemployed individuals decreased by 200 since July 2021 for a current level of 1,215 people, which is 841 less unemployed people than August 2020. The labor force in Carson City is currently 26,629 people, which is 147 less people than July 2021, and is up 553 people since August 2020.



For more on the economy of your county including unemployment, employment, unemployment insurance, wages, and more visit our [Area Profiles Page](#).

## Local Area Unemployment Statistics

Area		Labor Force	Employed	Unemployed	Unemployment Rate
<b>US</b>					
U.S.	SA	161,537,000	153,154,000	8,384,000	5.2
U.S.		161,788,000	153,232,000	8,556,000	5.3
<b>State</b>					
Nevada		1,533,342	1,424,036	109,306	7.1
Nevada	SA	1,571,738	1,451,340	120,398	7.7
<b>Metropolitan Statistical Area</b>					
Reno - Sparks MSA		262,702	251,606	11,096	4.2
Carson City MSA		26,629	25,414	1,215	4.6
Las Vegas - Paradise MSA		1,119,780	1,028,484	91,296	8.2
<b>Combined Statistical Area</b>					
Reno-Carson City-Fernley, Nv Combined Statistical Area		334,316	319,703	14,613	4.4
<b>County</b>					
Eureka County		966	935	31	3.2
Elko County		27,115	26,204	911	3.4
White Pine County		4,726	4,565	161	3.4
Lander County		3,236	3,115	121	3.7
Mineral County		2,053	1,976	77	3.8
Churchill County		11,002	10,571	431	3.9
Humboldt County		7,777	7,475	302	3.9
Washoe County		260,597	249,600	10,997	4.2
Lincoln County		1,974	1,889	85	4.3
Pershing County		2,441	2,335	106	4.3
Carson City		26,629	25,414	1,215	4.6
Douglas County		21,855	20,829	1,026	4.7
Esmeralda County		386	368	18	4.7
Storey County		2,105	2,006	99	4.7
Lyon County		23,130	21,854	1,276	5.5
Nye County		17,571	16,417	1,154	6.6
Clark County		1,119,780	1,028,484	91,296	8.2
<b>Labor Market Area</b>					
Elko Micropolitan Area		28,081	27,139	942	3.4
Fallon Micropolitan Area		11,002	10,571	431	3.9
Winnemucca Micropolitan Area		7,777	7,475	302	3.9
Gardnerville Micropolitan Area		21,855	20,829	1,026	4.7
Fernley Micropolitan Area		23,130	21,854	1,276	5.5
Pahrump Micropolitan Area		17,571	16,417	1,154	6.6
<b>City</b>					
Elko City*		10,589	10,225	364	3.4
Sparks		58,190	55,736	2,454	4.2
Reno		141,429	135,407	6,022	4.3
Mesquite*		7,841	7,395	446	5.7
Fernley City*		8,682	8,177	505	5.8
Boulder City*		7,345	6,876	469	6.4
Henderson		162,755	151,217	11,538	7.1
Las Vegas		309,821	284,546	25,275	8.2
North Las Vegas		116,149	105,114	11,035	9.5

\*State Specific Areas, not endorsed or published by the BLS

SA denotes seasonally adjusted data

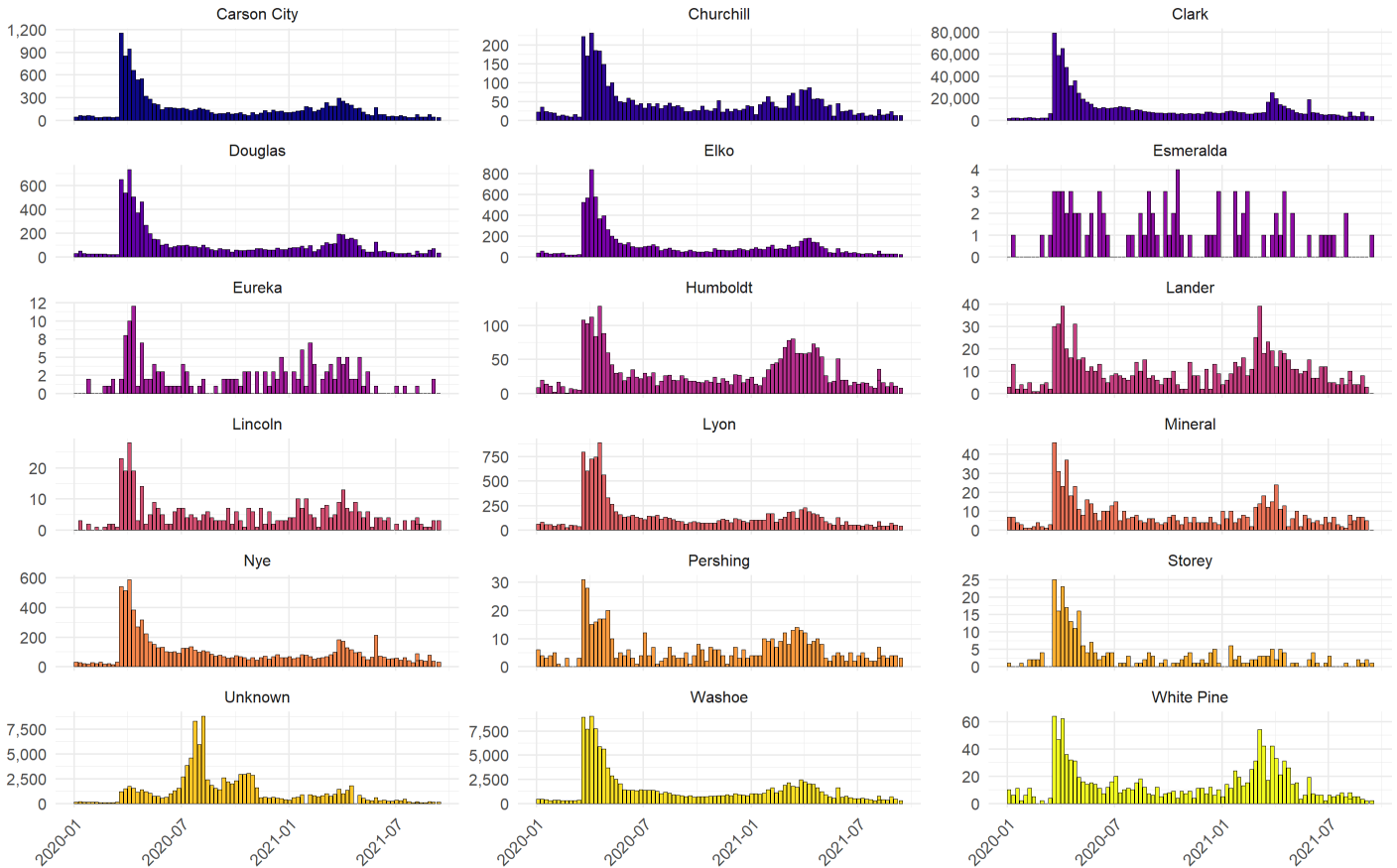
The cities of Boulder City, Elko, Fernley, and Mesquite are State specific areas. These estimates are not endorsed or published by the BLS.

# Unemployment Insurance Benefits

Initial claims for unemployment insurance totaled 7,826 statewide in August, down 20.1 percent from July. August showed the lowest total initial claims filed in 2021. The decrease in claims this month follows a similar trend which started back in February 2021. Looking forward, initial claims can be expected to decrease at a more gradual pace as the decline in trends have leveled off. However, the continuous changes in the economy caused by the COVID-19 pandemic will likely bring uncertainty to our typical seasonal trends.

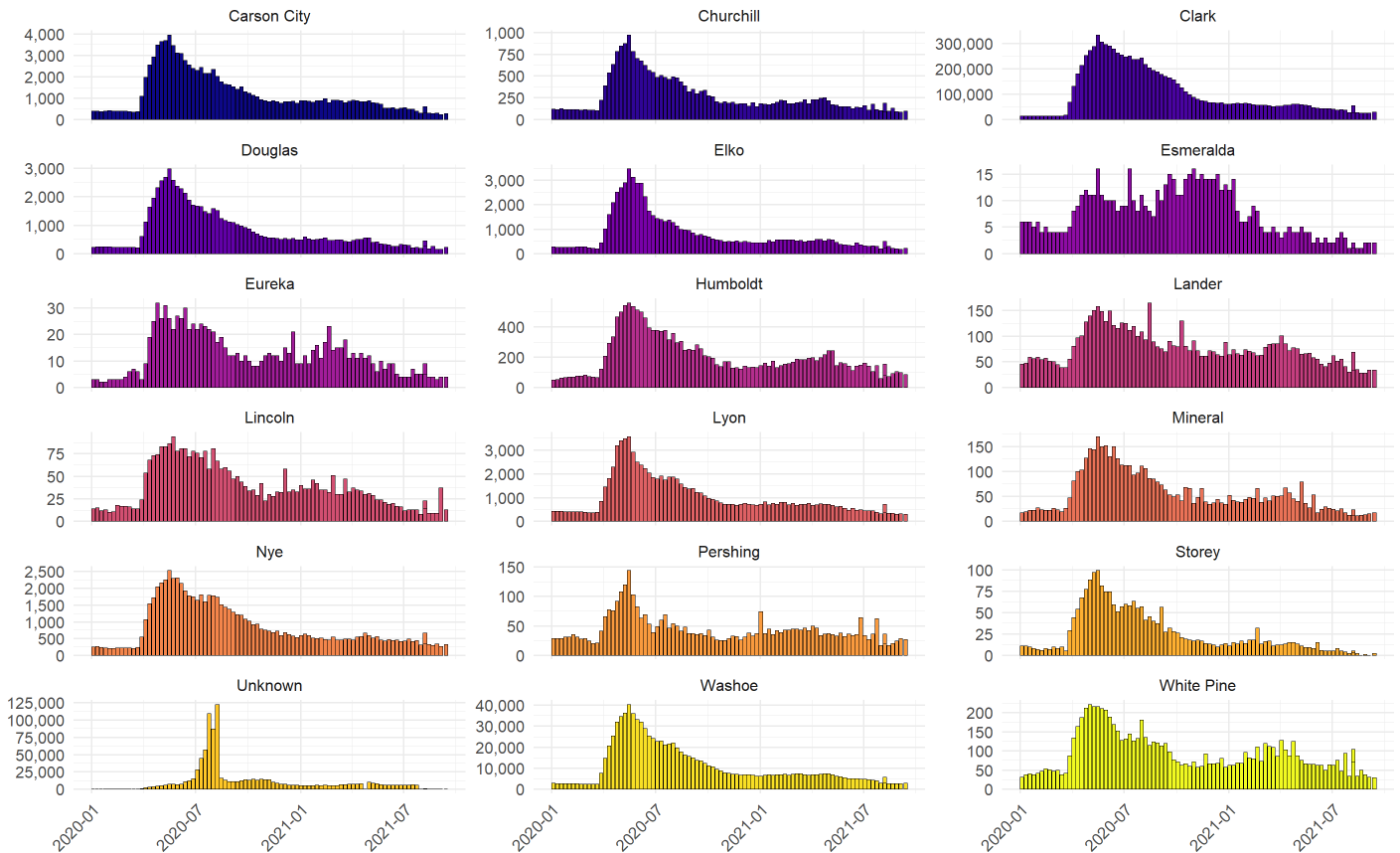
At the county level, most counties saw a decrease in initial claims. The statewide decrease in initial claims can be attributed to the decreases seen in Clark and Washoe counties over each report week in the month. Continued claims for regular unemployment insurance, which are a proxy for the number of persons filing for regular benefits in a given week, realized a decline over each report week in the month as well. Continued claim levels have been more stable in the recent months as most of Nevada’s claimants are receiving benefits from the pandemic extension programs. With the Federal pandemic assistance and extension programs coming to an end on September 4th, the number of claimants will likely decline as more constituents re-enter the labor market.

Initial Claims by County  
weekly claim totals since January 2020



Source: DETR Internal Reporting

Continued Claims by County  
weekly claim totals since January 2020



Source: DETR Internal Reporting  
Figure 11

Looking to other measures of unemployment insurance activity, we saw most counties' final payments increase since last month apart from Esmeralda, Lincoln, Mineral, Pershing, and White Pine counties. The changes in first payments were mixed over the month in August. First payments in Carson City, Churchill, Clark, Douglas, Elko, Esmeralda, Lander, and Lincoln counties realized a decline over the month while all other counties in the state increased or remained unchanged. Additionally, most counties saw an increase in benefit payments with both Clark and Washoe counties (the counties with the largest population in the state) increasing over the month by eight percent.

UI Claims Activity by County						
August 2021						
County	First Payments	Final Payments	Weeks Compensated	Benefit Payments	Average Weekly Benefit	
Carson City	115	86	4,110	\$1,394,606	\$339.32	
Churchill	35	19	941	\$307,300	\$326.57	
Clark	10,117	9,783	437,341	\$136,635,916	\$312.42	
Douglas	59	64	2,573	\$830,301	\$322.70	
Elko	58	43	1,876	\$606,821	\$323.47	
Esmeralda	1	0	28	\$10,423	\$372.25	
Eureka	2	4	48	\$17,372	\$361.92	
Humboldt	38	19	780	\$257,585	\$330.24	
Lander	11	7	285	\$105,185	\$369.07	
Lincoln	3	1	181	\$62,088	\$343.03	
Lyon	105	86	3,247	\$1,093,399	\$336.74	
Mineral	11	5	225	\$71,300	\$316.89	
Nye	145	104	4,456	\$1,381,021	\$309.92	
Pershing	12	3	141	\$49,861	\$353.62	
Storey	3	6	75	\$20,443	\$272.57	
Unknown	565	503	18,781	\$6,478,445	\$344.95	
Washoe	1,158	909	35,703	\$11,837,876	\$331.57	
White Pine	14	9	296	\$92,357	\$312.02	
<b>Statewide</b>	—	12,452	11,651	511,087	\$161,252,298.93	—

Source: DETR Internal Reporting

## Unemployment Rate Summary LAUS

Area		August 2021	July 2021	Monthly Change	August 2020	Yearly Change
<b>US</b>						
U.S.	SA	5.2	5.4	-0.2	8.4	-3.2
U.S.		5.3	5.7	-0.4	8.5	-3.2
<b>State</b>						
Nevada		7.1	8.2	-1.1	14.4	-7.3
Nevada	SA	7.7	7.7	0.0	14.5	-6.8
<b>Metropolitan Statistical Area</b>						
Reno - Sparks MSA		4.2	5.0	-0.8	7.8	-3.6
Carson City MSA		4.6	5.3	-0.7	7.9	-3.3
Las Vegas - Paradise MSA		8.2	9.3	-1.1	16.9	-8.7
<b>Combined Statistical Area</b>						
Reno-Carson City-Fernley, Nv Combined Statistical Area		4.4	5.1	-0.7	7.9	-3.5
<b>County</b>						
Eureka County		3.2	3.2	0.0	4.0	-0.8
Elko County		3.4	3.9	-0.5	4.9	-1.5
White Pine County		3.4	3.7	-0.3	4.4	-1.0
Lander County		3.7	4.4	-0.7	4.6	-0.9
Mineral County		3.8	4.4	-0.6	6.1	-2.3
Churchill County		3.9	4.3	-0.4	5.7	-1.8
Humboldt County		3.9	4.5	-0.6	5.2	-1.3
Washoe County		4.2	5.0	-0.8	7.8	-3.6
Lincoln County		4.3	4.6	-0.3	5.3	-1.0
Pershing County		4.3	5.0	-0.7	5.0	-0.7
Carson City		4.6	5.3	-0.7	7.9	-3.3
Douglas County		4.7	5.4	-0.7	8.3	-3.6
Esmeralda County		4.7	5.1	-0.4	4.7	0.0
Storey County		4.7	5.2	-0.5	8.2	-3.5
Lyon County		5.5	6.3	-0.8	8.6	-3.1
Nye County		6.6	7.8	-1.2	10.6	-4.0
Clark County		8.2	9.3	-1.1	16.9	-8.7
<b>Labor Market Area</b>						
Elko Micropolitan Area		3.4	3.8	-0.4	4.9	-1.5
Fallon Micropolitan Area		3.9	4.3	-0.4	5.7	-1.8
Winnemucca Micropolitan Area		3.9	4.5	-0.6	5.2	-1.3
Gardnerville Micropolitan Area		4.7	5.4	-0.7	8.3	-3.6
Fernley Micropolitan Area		5.5	6.3	-0.8	8.6	-3.1
Pahrump Micropolitan Area		6.6	7.8	-1.2	10.6	-4.0
<b>City</b>						
Elko City*		3.4	3.9	-0.5	5.0	-1.6
Sparks		4.2	4.9	-0.7	7.9	-3.7
Reno		4.3	5.0	-0.7	8.1	-3.8
Mesquite*		5.7	6.1	-0.4	8.0	-2.3
Fernley City*		5.8	6.7	-0.9	9.0	-3.2
Boulder City*		6.4	7.1	-0.7	11.3	-4.9
Henderson		7.1	8.0	-0.9	13.9	-6.8
Las Vegas		8.2	9.5	-1.3	16.2	-8.0
North Las Vegas		9.5	10.9	-1.4	16.7	-7.2

\* State Specific Areas, not endorsed or published by the BLS

SA denotes seasonally adjusted data



## Labor Force Levels Summary LAUS

Area	August 2021	July 2021	Monthly Change	August 2020	Yearly Change
<b>US</b>					
U.S.	161,788,000	162,817,000	-1,029,000	160,966,000	822,000
U.S. SA	161,537,000	161,347,000	190,000	160,818,000	719,000
<b>State</b>					
Nevada	1,533,342	1,547,673	-14,331	1,523,321	10,021
Nevada SA	1,571,738	1,577,589	-5,851	1,523,576	48,162
<b>Metropolitan Statistical Area</b>					
Carson City MSA	26,629	26,776	-147	26,076	553
Las Vegas - Paradise MSA	1,119,780	1,131,440	-11,660	1,119,253	527
Reno - Sparks MSA	262,702	264,110	-1,408	254,450	8,252
<b>Combined Statistical Area</b>					
Reno-Carson City-Fernley, Nv Combined Statistical Area	334,316	336,189	-1,873	325,890	8,426
<b>County</b>					
Churchill County	11,002	11,236	-234	10,863	139
Clark County	1,119,780	1,131,440	-11,660	1,119,253	527
Douglas County	21,855	22,053	-198	22,463	-608
Elko County	27,115	27,180	-65	26,697	418
Esmeralda County	386	391	-5	383	3
Eureka County	966	990	-24	942	24
Humboldt County	7,777	7,849	-72	7,716	61
Lander County	3,236	3,289	-53	3,104	132
Lincoln County	1,974	2,019	-45	1,946	28
Lyon County	23,130	23,250	-120	22,901	229
Mineral County	2,053	2,090	-37	2,089	-36
Nye County	17,571	17,717	-146	17,438	133
Pershing County	2,441	2,482	-41	2,427	14
Storey County	2,105	2,107	-2	2,038	67
Washoe County	260,597	262,003	-1,406	252,412	8,185
White Pine County	4,726	4,802	-76	4,571	155
Carson City	26,629	26,776	-147	26,076	553
<b>Labor Market Area</b>					
Elko Micropolitan Area	28,081	28,170	-89	27,639	442
Fallon Micropolitan Area	11,002	11,236	-234	10,863	139
Fernley Micropolitan Area	23,130	23,250	-120	22,901	229
Gardnerville Micropolitan Area	21,855	22,053	-198	22,463	-608
Pahrump Micropolitan Area	17,571	17,717	-146	17,438	133
Winnemucca Micropolitan Area	7,777	7,849	-72	7,716	61
<b>City</b>					
Fernley City*	8,682	8,736	-54	8,612	70
Boulder City*	7,345	7,382	-37	7,017	328
Elko City*	10,589	10,613	-24	10,429	160
Henderson	162,755	163,997	-1,242	158,842	3,913
Las Vegas	309,821	313,578	-3,757	307,142	2,679
Mesquite*	7,841	7,853	-12	7,271	570
North Las Vegas	116,149	117,670	-1,521	114,230	1,919
Reno	141,429	142,222	-793	137,375	4,054
Sparks	58,190	58,464	-274	56,420	1,770

\* State Specific Areas, not endorsed or published by the BLS

SA denotes seasonally adjusted data

## Employed Individuals Levels Summary LAUS

Area	August 2021	July 2021	Monthly Change	August 2020	Yearly Change
<b>US</b>					
U.S.	153,232,000	153,596,000	-364,000	147,224,000	6,008,000
U.S. SA	153,154,000	152,645,000	509,000	147,276,000	5,878,000
<b>State</b>					
Nevada	1,424,036	1,420,848	3,188	1,304,022	120,014
Nevada SA	1,451,340	1,455,997	-4,657	1,302,740	148,600
<b>Metropolitan Statistical Area</b>					
Carson City MSA	25,414	25,361	53	24,020	1,394
Las Vegas - Paradise MSA	1,028,484	1,025,723	2,761	930,546	97,938
Reno - Sparks MSA	251,606	251,025	581	234,663	16,943
<b>Combined Statistical Area</b>					
Reno-Carson City-Fernley, Nv Combined Statistical Area	319,703	319,040	663	300,221	19,482
<b>County</b>					
Churchill County	10,571	10,749	-178	10,248	323
Clark County	1,028,484	1,025,723	2,761	930,546	97,938
Douglas County	20,829	20,860	-31	20,597	232
Elko County	26,204	26,133	71	25,390	814
Esmeralda County	368	371	-3	365	3
Eureka County	935	958	-23	904	31
Humboldt County	7,475	7,496	-21	7,316	159
Lander County	3,115	3,144	-29	2,961	154
Lincoln County	1,889	1,926	-37	1,843	46
Lyon County	21,854	21,794	60	20,941	913
Mineral County	1,976	1,999	-23	1,961	15
Nye County	16,417	16,329	88	15,592	825
Pershing County	2,335	2,358	-23	2,306	29
Storey County	2,006	1,998	8	1,870	136
Washoe County	249,600	249,027	573	232,793	16,807
White Pine County	4,565	4,622	-57	4,370	195
Carson City	25,414	25,361	53	24,020	1,394
<b>Labor Market Area</b>					
Elko Micropolitan Area	27,139	27,091	48	26,294	845
Fallon Micropolitan Area	10,571	10,749	-178	10,248	323
Fernley Micropolitan Area	21,854	21,794	60	20,941	913
Gardnerville Micropolitan Area	20,829	20,860	-31	20,597	232
Pahrump Micropolitan Area	16,417	16,329	88	15,592	825
Winnemucca Micropolitan Area	7,475	7,496	-21	7,316	159
<b>City</b>					
Fernley City*	8,177	8,154	23	7,835	342
Boulder City*	6,876	6,858	18	6,222	654
Elko City*	10,225	10,197	28	9,907	318
Henderson	151,217	150,811	406	136,817	14,400
Las Vegas	284,546	283,782	764	257,450	27,096
Mesquite*	7,395	7,375	20	6,691	704
North Las Vegas	105,114	104,832	282	95,105	10,009
Reno	135,407	135,096	311	126,289	9,118
Sparks	55,736	55,608	128	51,983	3,753

\* State Specific Areas, not endorsed or published by the BLS

SA denotes seasonally adjusted data

## Unemployed Individuals Levels Summary LAUS

Area	August 2021	July 2021	Monthly Change	August 2020	Yearly Change
<b>US</b>					
U.S.	8,556,000	9,221,000	-665,000	13,742,000	-5,186,000
U.S. SA	8,384,000	8,702,000	-318,000	13,542,000	-5,158,000
<b>State</b>					
Nevada	109,306	126,825	-17,519	219,299	-109,993
Nevada SA	120,398	121,592	-1,194	220,836	-100,438
<b>Metropolitan Statistical Area</b>					
Carson City MSA	1,215	1,415	-200	2,056	-841
Las Vegas - Paradise MSA	91,296	105,717	-14,421	188,707	-97,411
Reno - Sparks MSA	11,096	13,085	-1,989	19,787	-8,691
<b>Combined Statistical Area</b>					
Reno-Carson City-Fernley, Nv Combined Statistical Area	14,613	17,149	-2,536	25,669	-11,056
<b>County</b>					
Churchill County	431	487	-56	615	-184
Clark County	91,296	105,717	-14,421	188,707	-97,411
Douglas County	1,026	1,193	-167	1,866	-840
Elko County	911	1,047	-136	1,307	-396
Esmeralda County	18	20	-2	18	0
Eureka County	31	32	-1	38	-7
Humboldt County	302	353	-51	400	-98
Lander County	121	145	-24	143	-22
Lincoln County	85	93	-8	103	-18
Lyon County	1,276	1,456	-180	1,960	-684
Mineral County	77	91	-14	128	-51
Nye County	1,154	1,388	-234	1,846	-692
Pershing County	106	124	-18	121	-15
Storey County	99	109	-10	168	-69
Washoe County	10,997	12,976	-1,979	19,619	-8,622
White Pine County	161	180	-19	201	-40
Carson City	1,215	1,415	-200	2,056	-841
<b>Labor Market Area</b>					
Elko Micropolitan Area	942	1,079	-137	1,345	-403
Fallon Micropolitan Area	431	487	-56	615	-184
Fernley Micropolitan Area	1,276	1,456	-180	1,960	-684
Gardnerville Micropolitan Area	1,026	1,193	-167	1,866	-840
Pahrump Micropolitan Area	1,154	1,388	-234	1,846	-692
Winnemucca Micropolitan Area	302	353	-51	400	-98
<b>City</b>					
Fernley City*	505	582	-77	777	-272
Boulder City*	469	524	-55	795	-326
Elko City*	364	416	-52	522	-158
Henderson	11,538	13,186	-1,648	22,025	-10,487
Las Vegas	25,275	29,796	-4,521	49,692	-24,417
Mesquite*	446	478	-32	580	-134
North Las Vegas	11,035	12,838	-1,803	19,125	-8,090
Reno	6,022	7,126	-1,104	11,086	-5,064
Sparks	2,454	2,856	-402	4,437	-1,983

\* State Specific Areas, not endorsed or published by the BLS

SA denotes seasonally adjusted data

## End Notes

Prepared by the Research and Analysis Bureau with contributions from: Christopher Robison, Dave Schmidt, Jason Gortari, Dionny McDonnell, Marianne Segurson, and Tim Wilcox.

Special thanks to all the R and RStudio developers that built the packages to make this possible. Packages used in this report include tidyverse, DBI, tidyquant, data.table, scales, gt, kableExtra, ggthemes, cowplot, gridExtra, RcppRoll, fiftystater, viridis.

This workforce product was funded by a grant awarded by the U.S. Department of Labor's Employment and Training Administration. The product was created by the recipient and does not necessarily reflect the official position of the U.S. Department of Labor. The U.S. Department of Labor makes no guarantees, warranties, or assurances of any kind, express or implied, with respect to such information, including any information on linked sites and including, but not limited to, accuracy of the information or its completeness, timeliness, usefulness, adequacy, continued availability, or ownership. This product is copyrighted by the institution that created it. Internal use by an organization and/or personal use by an individual for non-commercial purposes is permissible. All other uses require the prior authorization of the copyright owner.