

MEDIA CONTACT
Rosa Mendez
rcmendez@detr.nv.gov

PRESS RELEASE



ONE NEVADA - Growing a Skilled, Diverse Workforce
RESEARCH AND ANALYSIS BUREAU

STEVE SISOLAK
Governor

ELISA CAFFERATA
Director

DAVID SCHMIDT
Chief Economist

SUB-STATE PRESS RELEASE

For Immediate Release
January 26, 2021

Reno ends 2020 with smallest annual decline in employment; Eureka County lowest unemployment rate

CARSON CITY, NV - According to the Department of Employment, Training and Rehabilitation's (DETR) December 2020 economic report, the Silver State added back 8,200 jobs (0.6%) since November 2020. When compared to December 2019, jobs are still down by 96,900 (-6.8%) for a current total of 1,328,300 jobs. Nevada's seasonally adjusted unemployment rate was 9.2 percent in December 2020 compared to 3.7 percent in December 2019. Area total estimates are seasonally adjusted to account for regularly seen economic trends, but estimates discussing sector employment and sub-state unemployment rates are not adjusted for seasonality.

The Las Vegas Metropolitan Statistical Area (MSA) increased by 6,800 jobs (0.7%) since November 2020 with the trade, transportation, and utilities sector growing the most by 3,500 jobs (1.9%). Compared to December 2019, total employment saw a decrease of 99,100 jobs (-9.5%) with leisure and hospitality sector down the most by 62,300 jobs (-21.4%). The unemployment rate for the area was 10.4 percent and is still the highest in the state.

The Reno MSA had an increase of 4,400 jobs (1.9%) since November 2020 with the trade, transportation, and utilities sector growing the most by 2,900 jobs (5.5%). Compared to December 2019, total employment saw a decrease of 9,300 jobs (-3.7%) with leisure and hospitality sector down the most by 6,600 jobs (-17.2%). The unemployment rate in Reno is 5 percent compared to 2.8 percent last year.

The Carson City MSA experienced an increase of 200 jobs (0.7%) since November 2020 with the trade, transportation, and utilities sector growing the most by 100 jobs (2.4%). Compared to December 2019, total employment saw a decrease of 2,000 jobs (-6.5%) with professional and business services sector down the most by 200 jobs (-8.7%). The Carson MSA has an unemployment rate of 5.7 percent in December 2020.

"The three MSAs of Nevada all continue to recover jobs since last month, however when compared to last year the recovery is more mixed. Las Vegas remains the hardest hit due to the leisure & hospitality sector still operating with limited capacity. In contrast, employment in the Reno area is only down 3.7 percent since December 2019, with Carson City in the middle. Unemployment rates continued to improve in most areas of the state since November, however overall unemployment remains particularly high in Las Vegas at 10.4 percent, compared to 5.0 percent in Reno and 3.5 percent in Elko" said David Schmidt, Chief Economist for DETR.

500 E. Third Street, Room 200 | Carson City, Nevada 89713 | 2800 E. St. Louis Ave. | Las Vegas, NV 89104
Phone: (775) 684-3911 | (702) 486-7923 | <https://detr.nv.gov> | Fax: (775) 684-6426 | Fax: (702) 486-7924

Additional Economic Report Highlights:

Employment (Seasonally Adjusted):

- Las Vegas employment increased by 6,800 jobs (0.7%) since November 2020 and a decrease of 99,100 jobs (-9.5%) since December 2019.
- Reno employment had an increase of 4,400 jobs (1.9%) since November 2020 and a decrease of 9,300 jobs (-3.7%) since December 2019.
- Carson City employment had an increase of 200 jobs (0.7%) since November 2020 and a decrease of 2,000 jobs (-6.5%) since December 2019.

Unemployment (Not Seasonally Adjusted):

- Las Vegas MSA's unemployment was 10.4% in December 2020 compared to November 2020's rate of 11.8% and 3.5% in December 2019.
- Reno MSA's unemployment was 5% in December 2020 compared to November 2020's rate of 5.6% and 2.8% in December 2019.
- Carson City MSA's unemployment was 5.7% in December 2020 compared to November 2020's rate of 6.1% and 3.4% in December 2019.
- The unemployment rate in the Elko Micropolitan area was 3.5% in December 2020 compared to November 2020's rate of 3.8% and 2.6% in December 2019.
- The Fallon area's unemployment was 3.8% in December 2020 compared to November 2020's rate of 4.2% and 3% in December 2019.
- The unemployment rate in Lyon County was 6% in December 2020 compared to November 2020's rate of 6.6% and 4.1% in December 2019.
- Douglas County's unemployment rate was 5.4% in December 2020 compared to November 2020's rate of 6% and 3.5% in December 2019.
- The unemployment rate in Nye County was 7.2% in December 2020 compared to November 2020's rate of 7.8% and 4.5% in December 2019.
- The unemployment rate in the Winnemucca area was 3.7% in December 2020 compared to November 2020's rate of 4% and 2.6% in December 2019.

For the latest information on the Nevada economy check out our monthly [Labor Market Overview](#), or for the latest on your local area take a look at our monthly [Sub-State Labor Market Overview](#).

Additional charts and visualizations on employment estimates and a full breakout of employment by industry can be found at our [Current Employment Statistics](#) page, and a summary can be found on our [CES summary dashboard](#).

Additional information on unemployment estimates along with a complete breakout of unemployment in counties, cities, and other areas in Nevada can be found by visiting our [Local Area Unemployment Statistics](#) page.

—###—

ABOUT THE RESEARCH AND ANALYSIS BUREAU:

The [Research and Analysis Bureau](#) is Nevada's premier source for labor market information. A part of DETR, the Bureau is responsible for creating, analyzing, and reporting Nevada's labor market information, in cooperation with the United States Bureau of Labor Statistics (BLS).

Visit our [website](#) or Follow us on [Twitter](#)

DAVID SCHMIDT
Chief Economist



STEVE SISOLAK
Governor

Elisa Cafferata
Director

Nevada Sub-State Labor Market Overview

December 2020

Published on January 26, 2021

In this release, we provide updates on our primary employment, unemployment, and unemployment insurance programs. The state closed out December down by 6.8 percent when compared to December 2019. Despite this the state added back jobs for the 8th month in a row and is up by 8,200 jobs (0.6%) since November. Of the MSAs Carson City had annual employment decline like the state at 6.5 percent. The Las Vegas MSA remains the hardest hit at a decline of 9.5 percent, and the Reno MSA has been having the fastest recovery with the area down 9,300 jobs (-3.7%) over the year.

Unemployment rates in the state remained elevated when compared to December 2019 with the Las Vegas area up the most by 6.9 percentage points from last year's rate of 3.5 percent for a current rate of 10.4 percent. For comparison, the highest unemployment rate in the state this time last year was 4.5 percent in Nye County and the Pahrump Micropolitan area. Eureka County has the lowest unemployment rate in the state at 3.0 percent in December, though this rate is still up from 2.2 percent last year.

Nevada Economic Summary

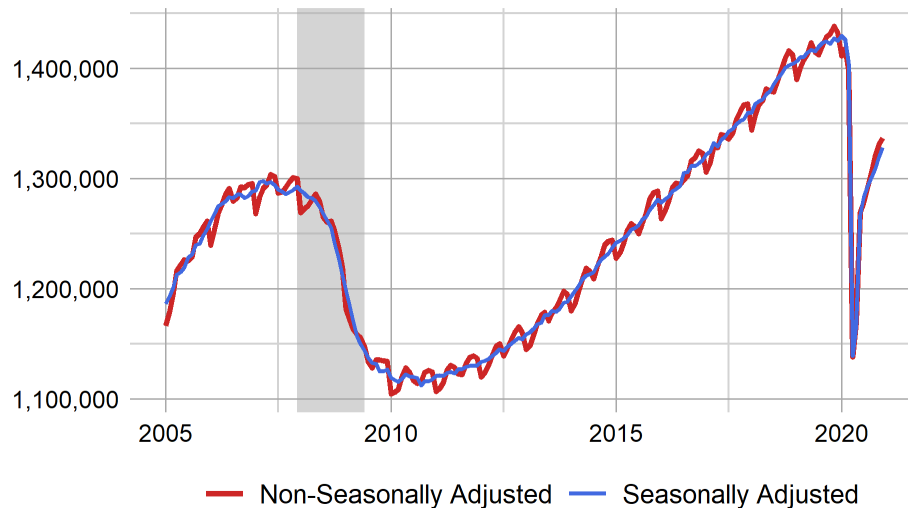
	Annual Employment Change		Unemployment Rates	
	Unadjusted	Adjusted	Unadjusted	Adjusted
U.S.	-6.0%	-6.2%	6.5	6.7
Nevada	-6.6%	-6.8%	9.0	9.2
Carson City MSA	-6.5%	-6.5%	5.7	**
Las Vegas - Paradise MSA	-9.4%	-9.5%	10.4	**
Reno - Sparks MSA	-3.6%	-3.7%	5.0	**

Seasonally adjusted estimates account for regularly seen seasonal employment patterns. Things like holiday hiring, beach season, ski season, or other jobs with seasonal components. The result of a seasonally adjusted estimate is usually a smoother estimate from which underlying economic trends can be seen. Adjusted estimates are in the summary table above, and in many of the other tables and figures through this document.

Current Employment Statistics ([CES](#))

Estimates for this section come from the Current Employment Statistics (CES) program, a state/federal partnership sponsored by the Bureau of Labor statistics ([BLS-CES](#)).

Nevada Employment



[United States Economic Summary](#) | [Nevada Economic Summary](#)

Las Vegas MSA seasonally adjusted total nonfarm employment realized an increase of 6,800 jobs (0.7%) from November 2020 to December 2020. Compared to December 2019 total nonfarm employment saw a decrease of 99,100 jobs (-9.5%). The two sectors with the largest employment growth are mining and logging (20.0%) and financial activities (1.8%). Sector estimates are not adjusted for seasonality.

Reno seasonally MSA adjusted total nonfarm employment realized an increase of 4,400 jobs (1.9%) from November 2020 to December 2020. Compared to December 2019 total nonfarm employment saw a decrease of 9,300 jobs (-3.7%). The three sectors with the largest employment growth are professional & business services (4.1%), manufacturing (3.1%), and construction (0.6%). Sector estimates are not adjusted for seasonality.

Carson City MSA seasonally adjusted total nonfarm employment realized an increase of 200 jobs (0.7%) from November 2020 to December 2020. Compared to December 2019 total nonfarm employment saw a decrease of 2,000 jobs (-6.5%). The sector with the largest employment growth was leisure and hospitality (13.5%), while Government (0.0%) remained unchanged. Sector estimates are not adjusted for seasonality.

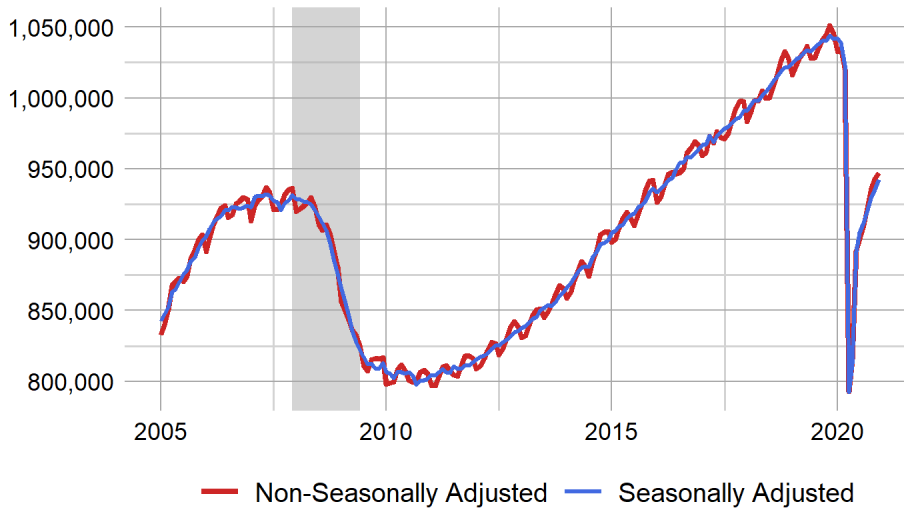
Non-Seasonally Adjusted Current Employment Statistics

Area	December 2020	Monthly Change	Yearly Change	Annual Growth Rate
U.S.	143,777,000	-328,000	-9,152,000	-6.0%
Nevada	1,337,100	5,600	-95,200	-6.6%
Carson City MSA	28,900	200	-2,000	-6.5%
Las Vegas - Paradise MSA	947,000	3,900	-98,600	-9.4%
Reno - Sparks MSA	244,000	3,600	-9,200	-3.6%

Seasonally Adjusted Current Employment Statistics

Area	December 2020	Monthly Change	Yearly Change	Annual Growth Rate
U.S.	142,624,000	-140,000	-9,374,000	-6.2%
Nevada	1,328,300	8,200	-96,900	-6.8%
Carson City MSA	28,800	200	-2,000	-6.5%
Las Vegas - Paradise MSA	942,400	6,800	-99,100	-9.5%
Reno - Sparks MSA	241,000	4,400	-9,300	-3.7%

Las Vegas Employment



Las Vegas Employment

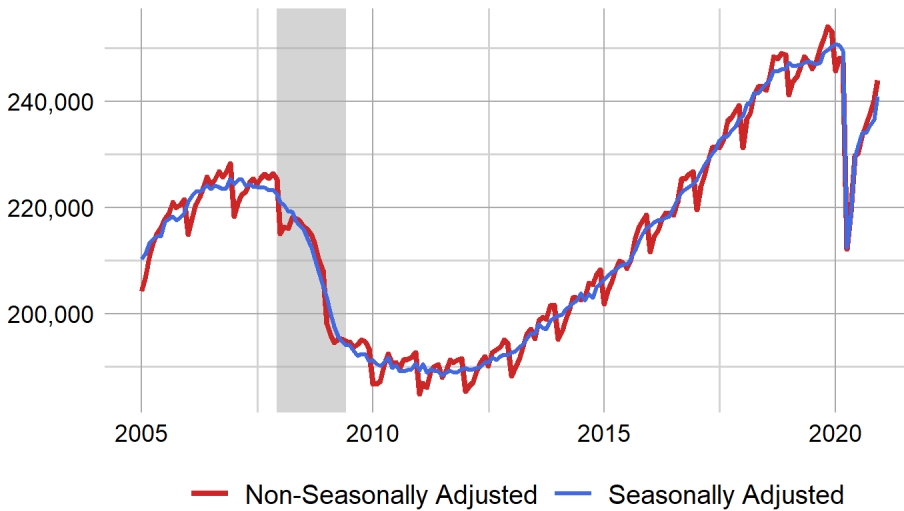
	Unadjusted	Adjusted
Current	947,000	942,400
Monthly Change	3,900	6,800
Annual Change	-98,600	-99,100
Annual Growth Rate	-9.4%	-9.5%
Maximum	1,050,900	1,044,000

Sector Summary

Unadjusted	Goods-Producing	Service-Providing
Current	94,200	852,800
Monthly Change	-700	4,600
Annual Change	-6,000	-92,600
Annual Growth Rate	-6.0%	-9.8%
Maximum	139,900	950,700

[Las Vegas MSA Summary](#)

Reno Employment



Reno Employment

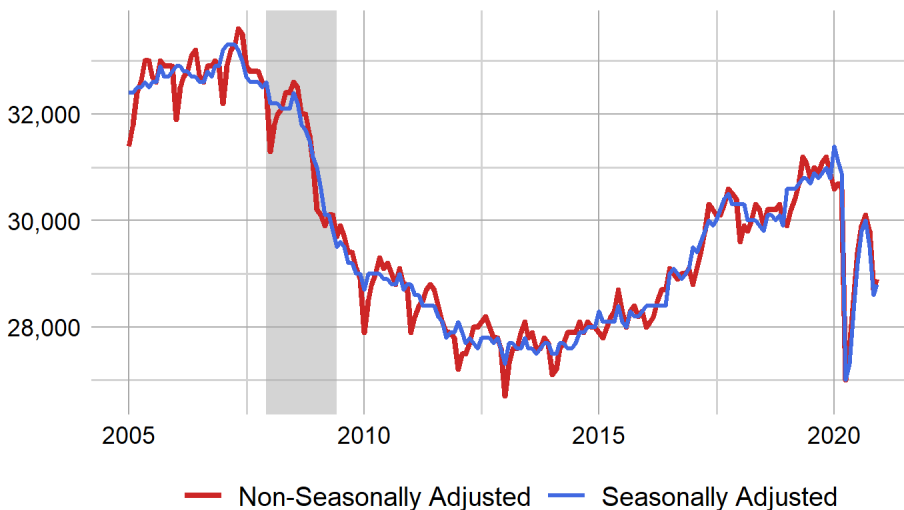
	Unadjusted	Adjusted
Current	244,000	241,000
Monthly Change	3,600	4,400
Annual Change	-9,200	-9,300
Annual Growth Rate	-3.6%	-3.7%
Maximum	254,000	250,800

Sector Summary

Unadjusted	Goods-Producing	Service-Providing
Current	44,500	199,500
Monthly Change	500	3,100
Annual Change	900	-10,100
Annual Growth Rate	2.1%	-4.8%
Maximum	44,800	210,200

[Reno MSA Summary](#)

Carson City Employment



Carson City Employment

	Unadjusted	Adjusted
Current	28,900	28,800
Monthly Change	200	200
Annual Change	-2,000	-2,000
Annual Growth Rate	-6.5%	-6.5%
Maximum	33,600	33,300

Sector Summary

Unadjusted	Goods-Producing	Service-Providing
Current	4,200	24,700
Monthly Change	0	200
Annual Change	0	-2,000
Annual Growth Rate	0.0%	-7.5%
Maximum	5,800	28,300

[Carson City MSA Summary](#)

For more information visit our [CES Page](#), see the summary tables at the end of the document, or check out our dashboards for a [CES summary](#) or [industry](#) estimates.

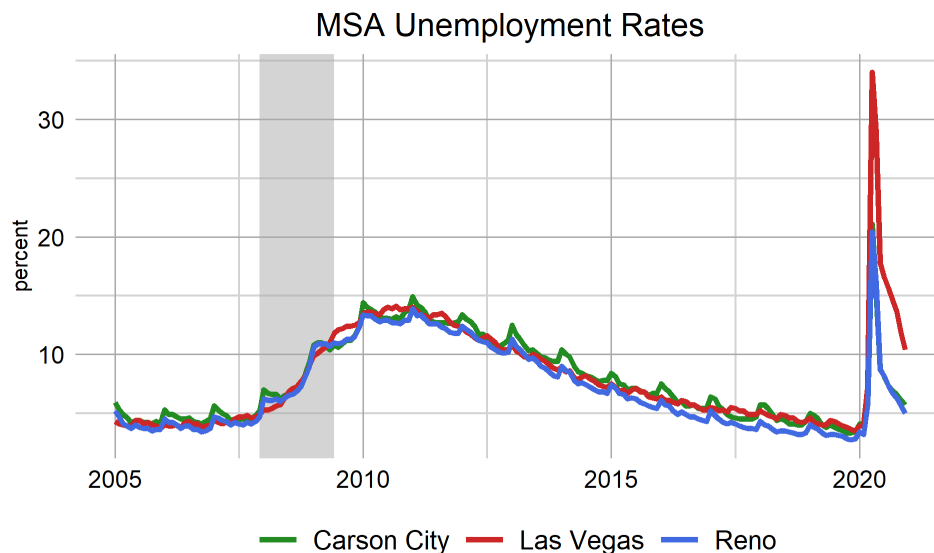
Local Area Unemployment Statistics ([LAUS](#))

Figures for our unemployment estimates come from the Local Area Unemployment Statistics (LAUS) program, a state/federal partnership sponsored by the Bureau of Labor Statistics ([BLS-LAUS](#)). This program produces monthly and annual employment, unemployment, and labor force data for census regions, states, counties, metropolitan areas, and many large cities, based on place of residence.

The Las Vegas MSA's unemployment rate was 10.4 percent in December 2020, decreasing from 11.8 percent in November 2020, and up from 3.5 percent in December 2019, non-seasonally adjusted. The number of unemployed individuals decreased by 16,431 since November 2020 for a current level of 112,990 people, which is 73,099 more unemployed people than December 2019. The labor force in Las Vegas is currently 1,084,944 people, which is 12,988 less people than November 2020, and is down 51,556 people since December 2019.

The Reno MSA's unemployment rate was 5 percent in December 2020, decreasing from 5.6 percent in November 2020, and up from 2.8 percent in December 2019, non-seasonally adjusted. The number of unemployed individuals decreased by 1,373 since November 2020 for a current level of 12,626 people, which is 5,420 more unemployed people than December 2019. The labor force in Reno is currently 251,522 people, which is 1,569 more people than November 2020, and is down 10,170 people since December 2019.

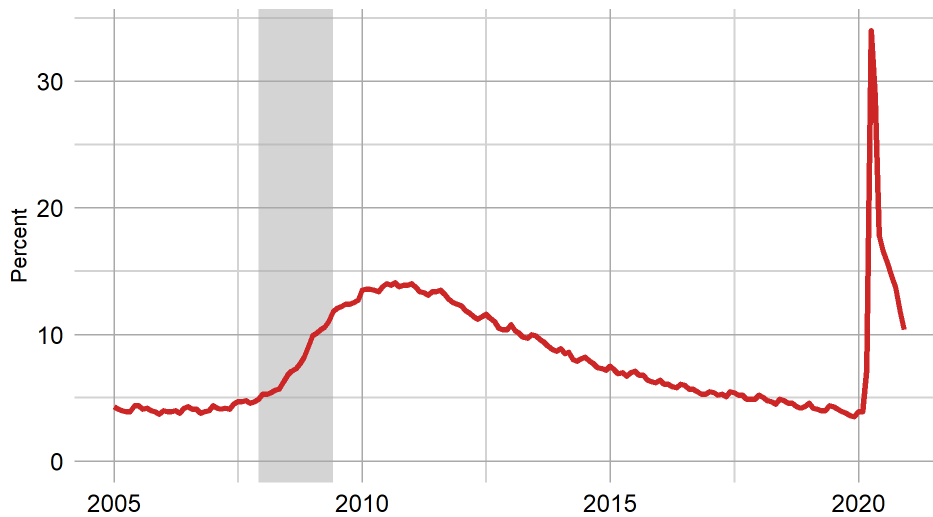
The Carson City MSA's unemployment rate was 5.7 percent in December 2020, decreasing from 6.1 percent in November 2020, and up from 3.4 percent in December 2019, non-seasonally adjusted. The number of unemployed individuals decreased by 98 since November 2020 for a current level of 1,422 people, which is 519 more unemployed people than December 2019. The labor force in Carson City is currently 24,791 people, which is 9 more people than November 2020, and is down 1,545 people since December 2019.



Due to the magnitude of labor force changes during the COVID-19 pandemic, the BLS has temporarily modified the methodology used for sub-state estimation. These changes impact all small counties (areas not part of an MSA) LAUS employment estimates and tie their growth rate to the changes seen statewide (excluding Clark county). Unemployment estimates are unaffected by this change in methodology.

The cities of Boulder City, Elko, Fernley, and Mesquite are state specific areas. These estimates are not endorsed or published by the BLS.

Las Vegas Unemployment Rate



Las Vegas LAUS Summary

Unemployment Rate

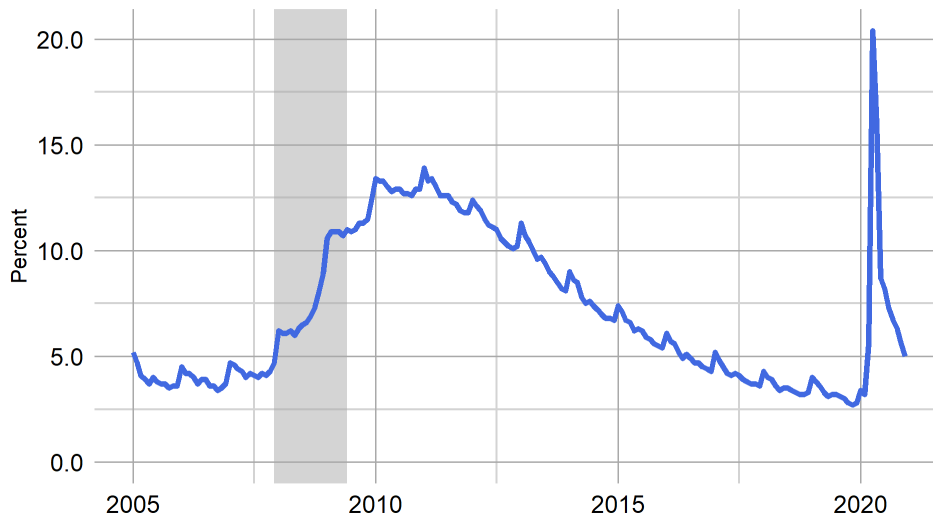
Unemployment Rate	10.4
Previous Month	11.8
Previous Year	3.5
Maximum Rate	34

Unemployed Individuals

Unemployment Level	112,990
Monthly Change	16,431
Annual Change	73,099
Maximum Level	359,352

[Las Vegas MSA Summary](#)

Reno Unemployment Rate



Reno LAUS Summary

Unemployment Rate

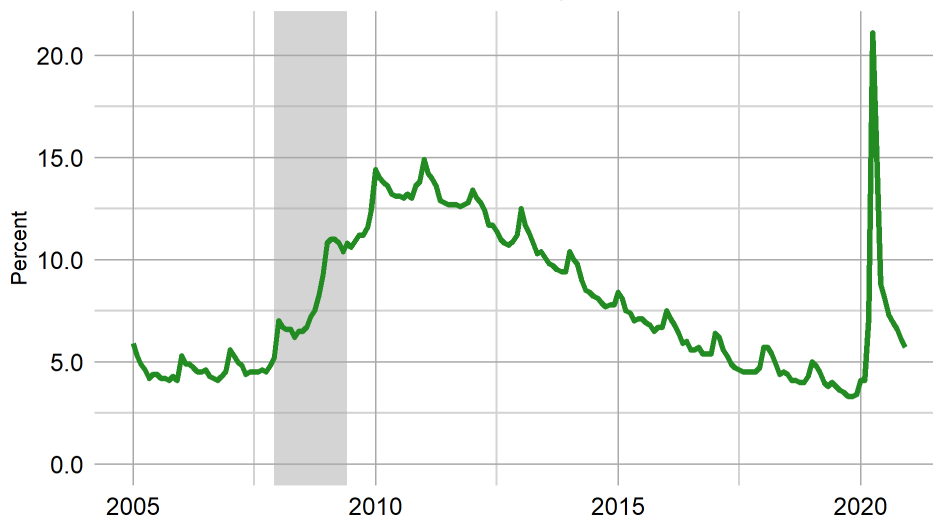
Unemployment Rate	5
Previous Month	5.6
Previous Year	2.8
Maximum Rate	20.4

Unemployed Individuals

Unemployment Level	12,626
Monthly Change	1,373
Annual Change	5,420
Maximum Level	45,669

[Reno MSA Summary](#)

Carson Unemployment Rate



Carson City LAUS Summary

Unemployment Rate

Unemployment Rate	5.7
Previous Month	6.1
Previous Year	3.4
Maximum Rate	21.1

Unemployed Individuals

Unemployment Level	1,422
Monthly Change	98
Annual Change	519
Maximum Level	4,982

[Carson City MSA Summary](#)

Unadjusted Local Area Unemployment Statistics

	Labor Force	Employed	Unemployed	Unemployment Rate
Nevada	1,482,807	1,349,764	133,043	9.0
Metropolitan Statistical Areas				
Reno - Sparks MSA	251,522	238,896	12,626	5.0
Carson City MSA	24,791	23,369	1,422	5.7
Las Vegas - Paradise MSA	1,084,944	971,954	112,990	10.4
Combined Statistical Areas				
Reno-Carson City-Fernley, Nv Combined Statistical Area	321,187	304,571	16,616	5.2
Counties				
Eureka County	935	907	28	3.0
White Pine County	4,459	4,321	138	3.1
Elko County	25,864	24,941	923	3.6
Humboldt County	7,713	7,424	289	3.7
Churchill County	10,644	10,243	401	3.8
Lander County	3,085	2,963	122	4.0
Pershing County	2,340	2,244	96	4.1
Lincoln County	1,964	1,878	86	4.4
Mineral County	1,966	1,878	88	4.5
Washoe County	249,523	237,011	12,512	5.0
Esmeralda County	419	397	22	5.3
Douglas County	22,555	21,327	1,228	5.4
Storey County	1,999	1,885	114	5.7
Carson City	24,791	23,369	1,422	5.7
Lyon County	22,319	20,979	1,340	6.0
Nye County	17,287	16,042	1,245	7.2
Clark County	1,084,944	971,954	112,990	10.4
Micropolitan Statistical Areas				
Elko Micropolitan Area	26,799	25,848	951	3.5
Winnemucca Micropolitan Area	7,713	7,424	289	3.7
Fallon Micropolitan Area	10,644	10,243	401	3.8
Gardnerville Micropolitan Area	22,555	21,327	1,228	5.4
Fernley Micropolitan Area	22,319	20,979	1,340	6.0
Pahrump Micropolitan Area	17,287	16,042	1,245	7.2
Cities				
Elko City*	10,114	9,737	377	3.7
Reno	134,597	127,830	6,767	5.0
Sparks	56,003	53,194	2,809	5.0
Mesquite*	7,276	6,865	411	5.6
Fernley City*	8,296	7,793	503	6.1
Boulder City*	7,021	6,507	514	7.3
Henderson	154,312	140,709	13,603	8.8
Las Vegas	301,287	270,332	30,955	10.3
North Las Vegas	110,854	98,485	12,369	11.2

* State Specific Areas, not endorsed or published by the BLS

Visit our [LAUS page](#) for more information, see the summary tables for industry summaries by area, or check out our [dashboard](#) for a look at each area.

Unemployment Insurance Benefits (UI)

Initial claims for unemployment insurance totaled 37,310 statewide in December, up from November's total by 14.4 percent. At the county level, these increases were seen across the state, with increases in the average weekly initial claims in 14 of Nevada's counties. In a typical year, we'd attribute these increases as expected seasonal movement during the winter months, however, how much of December's change is explained by seasonal changes versus pandemic impacts is difficult to determine. Continued claims, which are a proxy for the number of persons filing for regular UI benefits in each week, continued to see declines as more claimants transition to benefit extension programs.

Looking to other measures of unemployment insurance activity, with regular program initial claims increasing in the month, it is no surprise to see first payments made to claimants increase as compared to November. Final payments, often called exhaustions, continued to see declines compared to the last several months. This is expected as the largest cohorts of claimants have moved to the benefit extension programs.

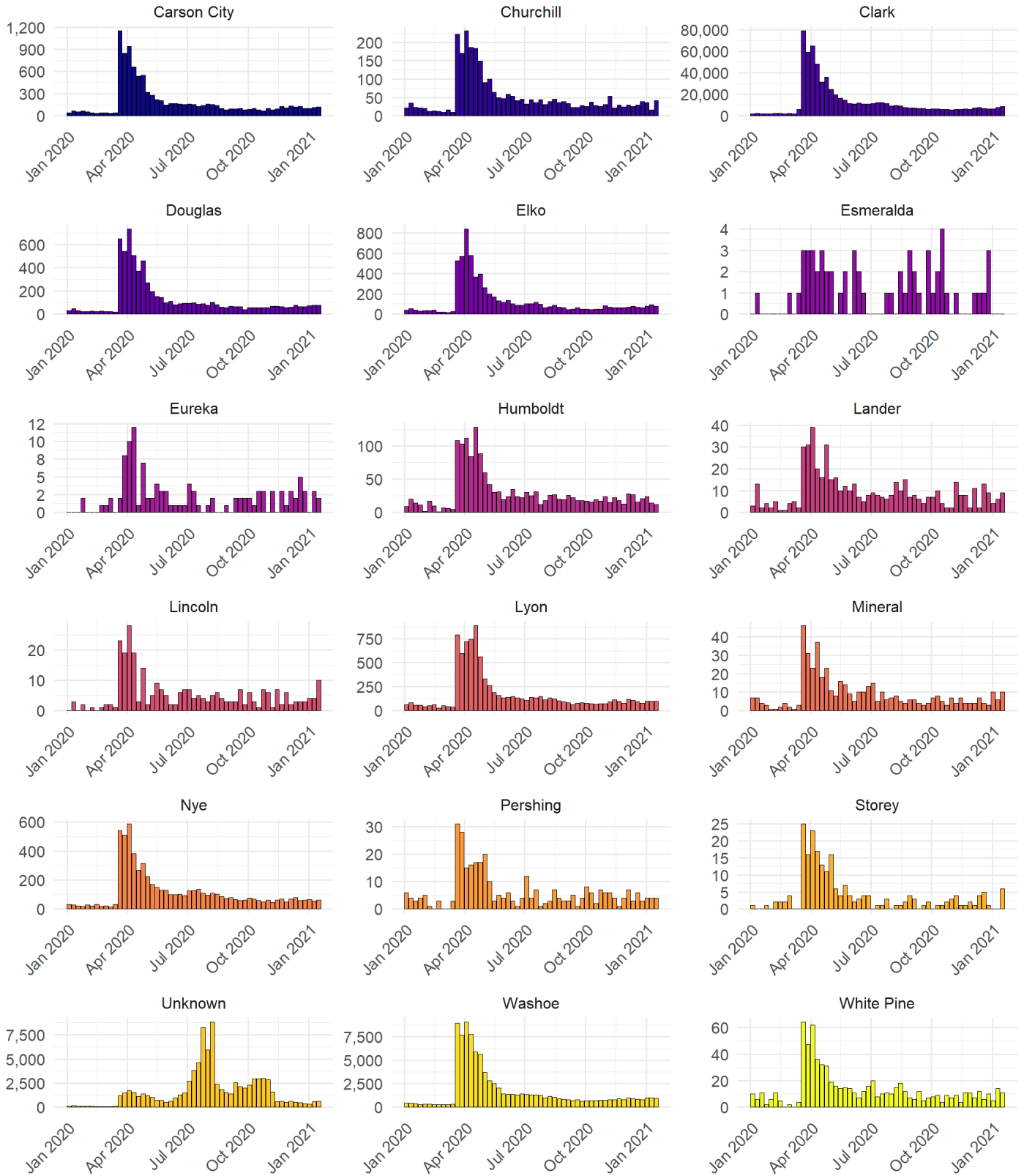
UI Claims Activity by County						
	County	First Payments	Final Payments	Weeks Compensated	Benefit Payments	Average Weekly Benefit
	Carson City	137	96	2,621	\$838,780	\$320.02
	Churchill	26	17	533	\$186,853	\$350.57
	Clark	5,901	11,293	243,020	\$74,412,397	\$306.20
	Douglas	73	75	1,669	\$561,983	\$336.72
	Elko	77	44	1,423	\$473,792	\$332.95
	Esmeralda	1	2	35	\$14,471	\$413.46
	Eureka	1	1	43	\$16,444	\$382.42
	Humboldt	27	14	426	\$152,803	\$358.69
	Lander	9	6	169	\$63,227	\$374.12
	Lincoln	7	2	93	\$34,585	\$371.88
	Lyon	138	71	2,109	\$718,289	\$340.58
	Mineral	5	6	127	\$26,259	\$206.76
	Nye	65	77	1,740	\$549,248	\$315.66
	Pershing	7	5	100	\$35,017	\$350.17
	Storey	1	0	41	\$13,365	\$325.98
	Unknown	492	914	18,755	\$7,715,888	\$411.40
	Washoe	1,015	883	22,208	\$7,474,729	\$336.58
	White Pine	16	5	228	\$76,481	\$335.44
Statewide	—	7,998	13,511	295,340	\$93,364,610.85	—

Source: DETR Internal Reporting

UI Summary Tables

Initial Claims by County

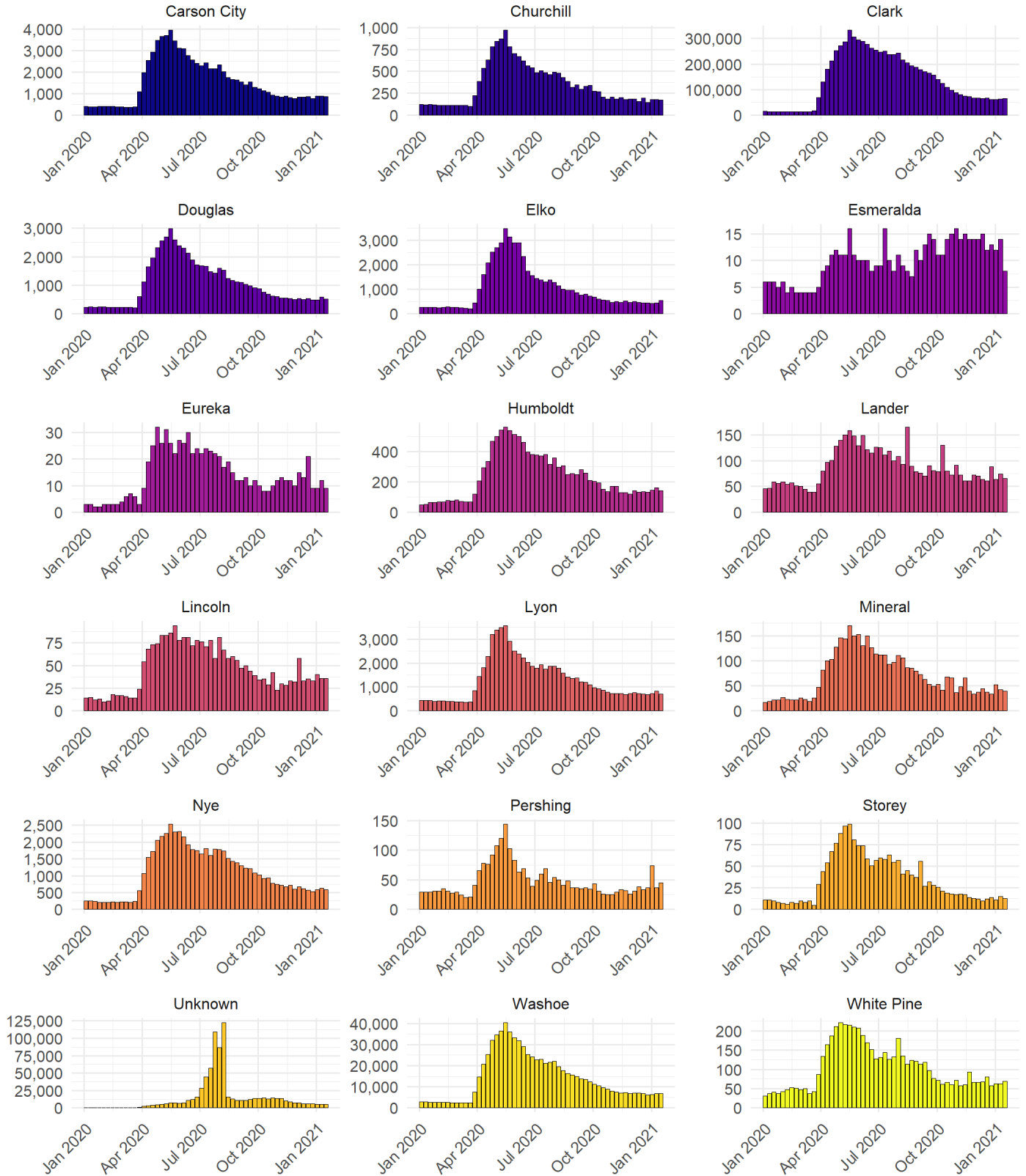
weekly claim totals since January 2020



Source: DETR Internal Reporting

Continued Claims by County

weekly claim totals since January 2020



Source: DETR Internal Reporting

Nevada Labor Force Summary

Statewide (Estimates in Thousands)

	Dec-20	Dec-19	+/- change	% change	Nov-20
Non-Seasonally Adjusted					
LABOR FORCE	1,482.8	1,550.1	-67.3	-4.3%	1,494.96
EMPLOYMENT	1,349.76	1,497.9	-148.1	-9.9%	1,343.5
UNEMPLOYMENT	133.0	52.3	80.8	154.5%	151.5
UNEMPLOYMENT RATE	9.0%	3.4%	5.6%	166.1%	10.1%
Seasonally Adjusted					
LABOR FORCE	1,485.6	1,551.4	-65.8	-4.2%	1,495.60
EMPLOYMENT	1,349.39	1,494.3	-144.9	-9.7%	1,340.4
UNEMPLOYMENT	136.2	57.1	79.1	138.4%	155.2
UNEMPLOYMENT RATE	9.2%	3.7%	5.5%	148.9%	10.4%

UNEMPLOYMENT RATES BASED ON UNROUNDED DATA

Employment adjusted by census relationships to reflect number of persons by place of residence.

Information compiled by DETR's Research & Analysis Bureau

Nevada Employment Summary

Seasonally Adjusted Current Employment Statistics

Area	December 2020	Monthly Change	Monthly Rate	Yearly Change	Yearly Rate
Nevada	1,328,300	8,200	0.6%	-96,900	-6.8%
Carson City MSA	28,800	200	0.7%	-2,000	-6.5%
Las Vegas - Paradise MSA	942,400	6,800	0.7%	-99,100	-9.5%
Reno - Sparks MSA	241,000	4,400	1.9%	-9,300	-3.7%

Non-Seasonally Adjusted Current Employment Statistics

Area	December 2020	Monthly Change	Monthly Rate	Yearly Change	Yearly Rate
Nevada	1,337,100	5,600	0.4%	-95,200	-6.6%
Carson City MSA	28,900	200	0.7%	-2,000	-6.5%
Las Vegas - Paradise MSA	947,000	3,900	0.4%	-98,600	-9.4%
Reno - Sparks MSA	244,000	3,600	1.5%	-9,200	-3.6%

LAUS Summary Tables

Non-Adjusted Unemployment Rates LAUS

	December 2020	November 2020	Monthly Change	December 2019	Yearly Change
Nevada	9.0	10.1	-1.1	3.4	5.6
Metropolitan Statistical Areas					
Carson City MSA	5.7	6.1	-0.4	3.4	2.3
Las Vegas - Paradise MSA	10.4	11.8	-1.4	3.5	6.9
Reno - Sparks MSA	5.0	5.6	-0.6	2.8	2.2
Combined Statistical Areas					
Reno-Carson City-Fernley, Nv Combined Statistical Area	5.2	5.7	-0.5	3.0	2.2
Counties					
Churchill County	3.8	4.2	-0.4	3.0	0.8
Clark County	10.4	11.8	-1.4	3.5	6.9
Douglas County	5.4	6.0	-0.6	3.5	1.9
Elko County	3.6	3.9	-0.3	2.6	1.0
Esmeralda County	5.3	5.4	-0.1	4.3	1.0
Eureka County	3.0	2.9	0.1	2.2	0.8
Humboldt County	3.7	4.0	-0.3	2.6	1.1
Lander County	4.0	4.0	0.0	3.0	1.0
Lincoln County	4.4	4.6	-0.2	3.2	1.2
Lyon County	6.0	6.6	-0.6	4.1	1.9
Mineral County	4.5	4.5	0.0	3.4	1.1
Nye County	7.2	7.8	-0.6	4.5	2.7
Pershing County	4.1	3.8	0.3	3.8	0.3
Storey County	5.7	6.1	-0.4	3.5	2.2
Washoe County	5.0	5.6	-0.6	2.7	2.3
White Pine County	3.1	3.3	-0.2	2.5	0.6
Carson City	5.7	6.1	-0.4	3.4	2.3
Micropolitan Statistical Areas					
Elko Micropolitan Area	3.5	3.8	-0.3	2.6	0.9
Fallon Micropolitan Area	3.8	4.2	-0.4	3.0	0.8
Fernley Micropolitan Area	6.0	6.6	-0.6	4.1	1.9
Gardnerville Micropolitan Area	5.4	6.0	-0.6	3.5	1.9
Pahrump Micropolitan Area	7.2	7.8	-0.6	4.5	2.7
Winnemucca Micropolitan Area	3.7	4.0	-0.3	2.6	1.1
Cities					
Fernley City*	6.1	7.0	-0.9	4.3	1.8
Boulder City*	7.3	7.8	-0.5	3.5	3.8
Elko City*	3.7	4.1	-0.4	2.6	1.1
Henderson	8.8	10.1	-1.3	3.2	5.6
Las Vegas	10.3	11.7	-1.4	3.5	6.8
Mesquite*	5.6	6.1	-0.5	2.9	2.7
North Las Vegas	11.2	12.8	-1.6	3.8	7.4
Reno	5.0	5.7	-0.7	2.7	2.3
Sparks	5.0	5.5	-0.5	2.7	2.3

* State Specific Areas, not endorsed or published by the BLS

Non-Seasonally Adjusted Labor Force Levels LAUS

	December 2020	November 2020	Monthly Change	December 2019	Yearly Change
Nevada	1,482,807	1,494,958	-12,151	1,550,143	-67,336
Metropolitan Statistical Areas					
Carson City MSA	24,791	24,782	9	26,336	-1,545
Las Vegas - Paradise MSA	1,084,944	1,097,932	-12,988	1,136,500	-51,556
Reno - Sparks MSA	251,522	249,953	1,569	261,692	-10,170
Combined Statistical Areas					
Reno-Carson City-Fernley, Nv Combined Statistical Area	321,187	319,852	1,335	334,305	-13,118
Counties					
Churchill County	10,644	10,759	-115	11,074	-430
Clark County	1,084,944	1,097,932	-12,988	1,136,500	-51,556
Douglas County	22,555	22,700	-145	23,093	-538
Elko County	25,864	25,939	-75	26,639	-775
Esmeralda County	419	427	-8	447	-28
Eureka County	935	965	-30	1,070	-135
Humboldt County	7,713	7,802	-89	8,147	-434
Lander County	3,085	3,099	-14	3,184	-99
Lincoln County	1,964	1,993	-29	2,113	-149
Lyon County	22,319	22,417	-98	23,184	-865
Mineral County	1,966	1,960	6	1,994	-28
Nye County	17,287	17,403	-116	17,509	-222
Pershing County	2,340	2,360	-20	2,523	-183
Storey County	1,999	1,985	14	2,074	-75
Washoe County	249,523	247,968	1,555	259,618	-10,095
White Pine County	4,459	4,470	-11	4,635	-176
Carson City	24,791	24,782	9	26,336	-1,545
Micropolitan Statistical Areas					
Elko Micropolitan Area	26,799	26,904	-105	27,709	-910
Fallon Micropolitan Area	10,644	10,759	-115	11,074	-430
Fernley Micropolitan Area	22,319	22,417	-98	23,184	-865
Gardnerville Micropolitan Area	22,555	22,700	-145	23,093	-538
Pahrump Micropolitan Area	17,287	17,403	-116	17,509	-222
Winnemucca Micropolitan Area	7,713	7,802	-89	8,147	-434
Cities					
Fernley City*	8,296	8,367	-71	8,632	-336
Boulder City*	7,021	7,031	-10	7,612	-591
Elko City*	10,114	10,152	-38	10,404	-290
Henderson	154,312	155,919	-1,607	163,976	-9,664
Las Vegas	301,287	304,995	-3,708	316,225	-14,938
Mesquite*	7,276	7,283	-7	7,976	-700
North Las Vegas	110,854	112,486	-1,632	115,547	-4,693
Reno	134,597	133,896	701	139,960	-5,363
Sparks	56,003	55,612	391	58,219	-2,216

* State Specific Areas, not endorsed or published by the BLS

Non-Seasonally Adjusted Employed Levels LAUS

	December 2020	November 2020	Monthly Change	December 2019	Yearly Change
Nevada	1,349,764	1,343,476	6,288	1,497,868	-148,104
Metropolitan Statistical Areas					
Carson City MSA	23,369	23,262	107	25,433	-2,064
Las Vegas - Paradise MSA	971,954	968,511	3,443	1,096,609	-124,655
Reno - Sparks MSA	238,896	235,954	2,942	254,486	-15,590
Combined Statistical Areas					
Reno-Carson City-Fernley, Nv Combined Statistical Area	304,571	301,505	3,066	324,424	-19,853
Counties					
Churchill County	10,243	10,303	-60	10,745	-502
Clark County	971,954	968,511	3,443	1,096,609	-124,655
Douglas County	21,327	21,348	-21	22,276	-949
Elko County	24,941	24,940	1	25,950	-1,009
Esmeralda County	397	404	-7	428	-31
Eureka County	907	937	-30	1,046	-139
Humboldt County	7,424	7,491	-67	7,938	-514
Lander County	2,963	2,974	-11	3,089	-126
Lincoln County	1,878	1,901	-23	2,045	-167
Lyon County	20,979	20,941	38	22,229	-1,250
Mineral County	1,878	1,872	6	1,927	-49
Nye County	16,042	16,047	-5	16,718	-676
Pershing County	2,244	2,270	-26	2,428	-184
Storey County	1,885	1,863	22	2,002	-117
Washoe County	237,011	234,091	2,920	252,484	-15,473
White Pine County	4,321	4,322	-1	4,521	-200
Carson City	23,369	23,262	107	25,433	-2,064
Micropolitan Statistical Areas					
Elko Micropolitan Area	25,848	25,877	-29	26,996	-1,148
Fallon Micropolitan Area	10,243	10,303	-60	10,745	-502
Fernley Micropolitan Area	20,979	20,941	38	22,229	-1,250
Gardnerville Micropolitan Area	21,327	21,348	-21	22,276	-949
Pahrump Micropolitan Area	16,042	16,047	-5	16,718	-676
Winnemucca Micropolitan Area	7,424	7,491	-67	7,938	-514
Cities					
Fernley City*	7,793	7,779	14	8,257	-464
Boulder City*	6,507	6,484	23	7,342	-835
Elko City*	9,737	9,737	0	10,131	-394
Henderson	140,709	140,210	499	158,755	-18,046
Las Vegas	270,332	269,375	957	305,003	-34,671
Mesquite*	6,865	6,841	24	7,746	-881
North Las Vegas	98,485	98,136	349	111,116	-12,631
Reno	127,830	126,255	1,575	136,175	-8,345
Sparks	53,194	52,538	656	56,666	-3,472

* State Specific Areas, not endorsed or published by the BLS

Non-Seasonally Adjusted Unemployed Levels LAUS

	December 2020	November 2020	Monthly Change	December 2019	Yearly Change
Nevada	133,043	151,482	-18,439	52,275	80,768
Metropolitan Statistical Areas					
Carson City MSA	1,422	1,520	-98	903	519
Las Vegas - Paradise MSA	112,990	129,421	-16,431	39,891	73,099
Reno - Sparks MSA	12,626	13,999	-1,373	7,206	5,420
Combined Statistical Areas					
Reno-Carson City-Fernley, Nv Combined Statistical Area	16,616	18,347	-1,731	9,881	6,735
Counties					
Churchill County	401	456	-55	329	72
Clark County	112,990	129,421	-16,431	39,891	73,099
Douglas County	1,228	1,352	-124	817	411
Elko County	923	999	-76	689	234
Esmeralda County	22	23	-1	19	3
Eureka County	28	28	0	24	4
Humboldt County	289	311	-22	209	80
Lander County	122	125	-3	95	27
Lincoln County	86	92	-6	68	18
Lyon County	1,340	1,476	-136	955	385
Mineral County	88	88	0	67	21
Nye County	1,245	1,356	-111	791	454
Pershing County	96	90	6	95	1
Storey County	114	122	-8	72	42
Washoe County	12,512	13,877	-1,365	7,134	5,378
White Pine County	138	148	-10	114	24
Carson City	1,422	1,520	-98	903	519
Micropolitan Statistical Areas					
Elko Micropolitan Area	951	1,027	-76	713	238
Fallon Micropolitan Area	401	456	-55	329	72
Fernley Micropolitan Area	1,340	1,476	-136	955	385
Gardnerville Micropolitan Area	1,228	1,352	-124	817	411
Pahrump Micropolitan Area	1,245	1,356	-111	791	454
Winnemucca Micropolitan Area	289	311	-22	209	80
Cities					
Fernley City*	503	588	-85	375	128
Boulder City*	514	547	-33	270	244
Elko City*	377	415	-38	273	104
Henderson	13,603	15,709	-2,106	5,221	8,382
Las Vegas	30,955	35,620	-4,665	11,222	19,733
Mesquite*	411	442	-31	230	181
North Las Vegas	12,369	14,350	-1,981	4,431	7,938
Reno	6,767	7,641	-874	3,785	2,982
Sparks	2,809	3,074	-265	1,553	1,256

* State Specific Areas, not endorsed or published by the BLS

Statewide & Large Areas LAUS Last 13 Months (Estimates in Thousands)

	Dec-19	Jan-20	Feb-20	Mar-20	Apr-20	May-20	Jun-20	Jul-20	Aug-20	Sep-20	Oct-20	Nov-20	Dec-20	12m Avg.
Nevada - Non-Seasonally Adjusted														
LABOR FORCE	1,550.1	1,560.9	1,573.0	1,561.5	1,425.5	1,382.2	1,502.7	1,494.9	1,496.2	1,550.4	1,550.4	1,495.0	1,482.8	1,506.3
EMPLOYMENT	1,497.9	1,501.0	1,513.5	1,454.2	999.8	1,035.1	1,272.4	1,281.4	1,296.5	1,357.5	1,357.5	1,343.5	1,349.8	1,313.5
UNEMPLOYMENT	52.3	59.9	59.5	107.3	428.7	347.1	230.3	213.6	199.9	193.0	193.0	151.5	133.0	193.1
UNEMPLOYMENT RATE	3.4%	3.8%	3.8%	6.9%	30.1%	25.1%	15.3%	14.3%	13.4%	12.4%	12.4%	10.1%	9.0%	13.1%
Nevada - Seasonally Adjusted														
LABOR FORCE	1,551.4	1,555.3	1,559.5	1,566.2	1,429.1	1,382.8	1,501.1	1,488.6	1,495.3	1,547.9	1,544.8	1,495.6	1,485.6	1,504.3
EMPLOYMENT	1,494.3	1,499.0	1,503.3	1,458.5	999.3	1,033.3	1,273.6	1,277.9	1,295.9	1,355.0	1,360.7	1,340.4	1,349.4	1,312.2
UNEMPLOYMENT	57.1	56.3	56.2	107.8	429.7	349.5	227.4	210.7	199.4	192.9	184.5	155.2	136.2	192.2
UNEMPLOYMENT RATE	3.7%	3.6%	3.6%	6.9%	30.1%	25.3%	15.2%	14.2%	13.3%	12.5%	11.9%	10.4%	9.2%	13.0%
Carson City MSA - Non-Seasonally Adjusted														
LABOR FORCE	26.3	26.6	26.9	26.8	23.6	22.7	25.0	25.4	25.6	26.5	26.3	24.8	24.8	25.4
EMPLOYMENT	25.4	25.5	25.8	24.9	18.6	19.3	22.8	23.4	23.7	24.7	24.6	23.3	23.4	23.3
UNEMPLOYMENT	0.9	1.1	1.1	1.9	5.0	3.5	2.2	2.1	1.9	1.8	1.7	1.5	1.4	2.1
UNEMPLOYMENT RATE	3.4%	4.1%	4.1%	7.1%	21.1%	15.2%	8.8%	8.1%	7.3%	6.9%	6.6%	6.1%	5.7%	8.4%
Las Vegas - Paradise MSA - Non-Seasonally Adjusted														
LABOR FORCE	1,136.5	1,145.9	1,154.1	1,143.8	1,055.9	1,019.2	1,110.6	1,104.2	1,103.3	1,142.3	1,138.9	1,097.9	1,084.9	1,108.4
EMPLOYMENT	1,096.6	1,101.2	1,109.4	1,061.7	696.5	725.3	912.5	921.0	931.5	975.9	982.7	968.5	972.0	946.5
UNEMPLOYMENT	39.9	44.8	44.8	82.1	359.4	293.9	198.1	183.1	171.8	166.4	156.2	129.4	113.0	161.9
UNEMPLOYMENT RATE	3.5%	3.9%	3.9%	7.2%	34.0%	28.8%	17.8%	16.6%	15.6%	14.6%	13.7%	11.8%	10.4%	14.9%
Reno - Sparks MSA - Non-Seasonally Adjusted														
LABOR FORCE	261.7	260.5	263.8	261.5	223.7	221.4	245.8	245.2	246.4	255.6	255.4	250.0	251.5	248.4
EMPLOYMENT	254.5	251.6	255.3	246.8	178.0	185.9	224.3	225.2	228.4	238.5	239.3	236.0	238.9	229.0
UNEMPLOYMENT	7.2	8.8	8.5	14.7	45.7	35.5	21.4	20.1	18.0	17.1	16.1	14.0	12.6	19.4
UNEMPLOYMENT RATE	2.8%	3.4%	3.2%	5.6%	20.4%	16.0%	8.7%	8.2%	7.3%	6.7%	6.3%	5.6%	5.0%	8.0%
Reno-Carson City-Fernley, Nv Combined Statistical Area - Non-Seasonally Adjusted														
LABOR FORCE	334.3	333.9	337.9	335.7	292.2	287.5	315.7	315.4	317.1	328.9	328.7	319.9	321.2	319.5
EMPLOYMENT	324.4	321.8	326.2	315.5	233.1	242.3	288.1	289.6	293.7	306.7	307.6	301.5	304.6	294.2
UNEMPLOYMENT	9.9	12.0	11.7	20.1	59.1	45.2	27.6	25.8	23.4	22.2	21.1	18.3	16.6	25.3
UNEMPLOYMENT RATE	3.0%	3.6%	3.5%	6.0%	20.2%	15.7%	8.7%	8.2%	7.4%	6.8%	6.4%	5.7%	5.2%	8.1%

Note: Unemployment rates are based on unrounded data.

Employment adjusted by census relationships to reflect number of persons by place of residence.

Information compiled by DETR's Research & Analysis Bureau

Counties LAUS Last 13 Months (Estimates in Thousands)

	Dec-19	Jan-20	Feb-20	Mar-20	Apr-20	May-20	Jun-20	Jul-20	Aug-20	Sep-20	Oct-20	Nov-20	Dec-20	12m Avg.
Churchill County - Non-Seasonally Adjusted														
LABOR FORCE	11.1	11.4	11.3	11.5	10.6	10.2	10.7	10.5	10.5	11.0	11.3	10.8	10.6	10.9
EMPLOYMENT	10.7	11.0	10.9	10.8	9.4	9.4	10.1	9.9	9.9	10.5	10.7	10.3	10.2	10.3
UNEMPLOYMENT	0.3	0.4	0.4	0.7	1.2	0.9	0.6	0.6	0.6	0.5	0.5	0.5	0.4	0.6
UNEMPLOYMENT RATE	3.0%	3.7%	3.6%	6.1%	11.3%	8.6%	5.7%	5.8%	5.3%	4.7%	4.5%	4.2%	3.8%	5.6%
Clark County - Non-Seasonally Adjusted														
LABOR FORCE	1,136.5	1,145.9	1,154.1	1,143.8	1,055.9	1,019.2	1,110.6	1,104.2	1,103.3	1,142.3	1,138.9	1,097.9	1,084.9	1,108.4
EMPLOYMENT	1,096.6	1,101.2	1,109.4	1,061.7	696.5	725.3	912.5	921.0	931.5	975.9	982.7	968.5	972.0	946.5
UNEMPLOYMENT	39.9	44.8	44.8	82.1	359.4	293.9	198.1	183.1	171.8	166.4	156.2	129.4	113.0	161.9
UNEMPLOYMENT RATE	3.5%	3.9%	3.9%	7.2%	34.0%	28.8%	17.8%	16.6%	15.6%	14.6%	13.7%	11.8%	10.4%	14.9%
Douglas County - Non-Seasonally Adjusted														
LABOR FORCE	23.1	23.3	23.5	23.4	22.8	22.1	22.7	22.6	22.7	23.6	23.6	22.7	22.6	23.0
EMPLOYMENT	22.3	22.4	22.6	21.8	18.5	18.8	20.7	20.7	21.0	22.0	22.1	21.3	21.3	21.1
UNEMPLOYMENT	0.8	0.9	0.9	1.6	4.3	3.3	2.1	1.8	1.7	1.6	1.6	1.4	1.2	1.9
UNEMPLOYMENT RATE	3.5%	4.0%	4.0%	6.8%	18.8%	14.9%	9.1%	8.1%	7.5%	7.0%	6.6%	6.0%	5.4%	8.2%
Elko County - Non-Seasonally Adjusted														
LABOR FORCE	26.6	27.0	27.1	27.3	26.9	26.6	25.7	25.5	25.6	26.5	26.8	25.9	25.9	26.4
EMPLOYMENT	26.0	26.2	26.2	25.9	23.2	23.4	24.4	24.2	24.4	25.4	25.6	24.9	24.9	24.9
UNEMPLOYMENT	0.7	0.9	0.9	1.4	3.8	3.1	1.4	1.3	1.2	1.2	1.1	1.0	0.9	1.5
UNEMPLOYMENT RATE	2.6%	3.3%	3.3%	5.1%	14.0%	11.8%	5.3%	5.1%	4.7%	4.3%	4.2%	3.9%	3.6%	5.7%
Esmeralda County - Non-Seasonally Adjusted														
LABOR FORCE	0.4	0.5	0.5	0.5	0.4	0.4	0.4	0.4	0.4	0.4	0.5	0.4	0.4	0.4
EMPLOYMENT	0.4	0.5	0.4	0.4	0.4	0.4	0.4	0.4	0.4	0.4	0.4	0.4	0.4	0.4
UNEMPLOYMENT	0.0	0.0	0.0	0.0	0.0	0.0	0.0	0.0	0.0	0.0	0.0	0.0	0.0	0.0
UNEMPLOYMENT RATE	4.3%	3.8%	3.9%	5.9%	6.8%	5.4%	3.6%	3.8%	4.3%	4.5%	5.2%	5.4%	5.3%	4.8%
Eureka County - Non-Seasonally Adjusted														
LABOR FORCE	1.1	1.2	1.1	1.2	1.0	0.9	1.0	0.9	0.9	1.0	1.1	1.0	0.9	1.0
EMPLOYMENT	1.0	1.1	1.1	1.1	0.9	0.9	1.0	0.9	0.9	1.0	1.1	0.9	0.9	1.0
UNEMPLOYMENT	0.0	0.0	0.0	0.0	0.1	0.0	0.0	0.0	0.0	0.0	0.0	0.0	0.0	0.0
UNEMPLOYMENT RATE	2.2%	2.2%	2.4%	4.0%	6.3%	4.1%	3.6%	4.2%	3.9%	3.1%	2.7%	2.9%	3.0%	3.5%
Humboldt County - Non-Seasonally Adjusted														
LABOR FORCE	8.1	8.4	8.3	8.5	7.7	7.6	7.8	7.6	7.6	8.0	8.3	7.8	7.7	7.9
EMPLOYMENT	7.9	8.1	8.0	8.1	7.1	7.0	7.4	7.2	7.2	7.7	7.9	7.5	7.4	7.5
UNEMPLOYMENT	0.2	0.3	0.3	0.4	0.6	0.6	0.4	0.4	0.4	0.4	0.4	0.3	0.3	0.4
UNEMPLOYMENT RATE	2.6%	3.2%	3.3%	5.2%	8.4%	7.8%	5.1%	5.1%	4.9%	4.5%	4.3%	4.0%	3.7%	4.9%
Lander County - Non-Seasonally Adjusted														
LABOR FORCE	3.2	3.3	3.3	3.3	3.0	2.9	3.0	3.0	3.0	3.2	3.2	3.1	3.1	3.1
EMPLOYMENT	3.1	3.1	3.1	3.1	2.7	2.7	2.9	2.9	2.9	3.0	3.1	3.0	3.0	3.0
UNEMPLOYMENT	0.1	0.1	0.1	0.2	0.2	0.2	0.1	0.1	0.1	0.1	0.1	0.1	0.1	0.1
UNEMPLOYMENT RATE	3.0%	3.9%	3.7%	5.8%	7.9%	6.1%	4.4%	4.6%	4.3%	4.2%	4.5%	4.0%	4.0%	4.8%
Lincoln County - Non-Seasonally Adjusted														
LABOR FORCE	2.1	2.2	2.2	2.2	1.9	1.8	2.0	1.9	1.9	2.0	2.1	2.0	2.0	2.0
EMPLOYMENT	2.0	2.1	2.1	2.1	1.7	1.7	1.9	1.8	1.8	1.9	2.0	1.9	1.9	1.9
UNEMPLOYMENT	0.1	0.1	0.1	0.1	0.2	0.1	0.1	0.1	0.1	0.1	0.1	0.1	0.1	0.1
UNEMPLOYMENT RATE	3.2%	3.7%	3.8%	6.1%	9.0%	6.3%	4.8%	5.0%	5.0%	4.5%	4.7%	4.6%	4.4%	5.2%

Note: Unemployment rates are based on unrounded data.

Employment adjusted by census relationships to reflect number of persons by place of residence.

Information compiled by DETR's Research & Analysis Bureau

Counties LAUS Last 13 Months (Estimates in Thousands)

	Dec-19	Jan-20	Feb-20	Mar-20	Apr-20	May-20	Jun-20	Jul-20	Aug-20	Sep-20	Oct-20	Nov-20	Dec-20	12m Avg.
Lyon County - Non-Seasonally Adjusted														
LABOR FORCE	23.2	23.5	23.6	23.9	22.1	21.2	22.2	22.2	22.3	23.2	23.3	22.4	22.3	22.7
EMPLOYMENT	22.2	22.3	22.5	22.0	18.0	18.3	20.3	20.3	20.6	21.5	21.7	20.9	21.0	20.8
UNEMPLOYMENT	1.0	1.2	1.2	2.0	4.2	2.9	1.9	1.9	1.8	1.7	1.6	1.5	1.3	1.9
UNEMPLOYMENT RATE	4.1%	5.0%	5.0%	8.2%	18.9%	13.8%	8.5%	8.4%	8.0%	7.3%	7.0%	6.6%	6.0%	8.6%
Mineral County - Non-Seasonally Adjusted														
LABOR FORCE	2.0	2.0	2.0	2.1	2.0	2.0	1.9	1.9	2.0	2.0	2.0	2.0	2.0	2.0
EMPLOYMENT	1.9	1.9	1.9	2.0	1.8	1.8	1.8	1.8	1.8	1.9	1.9	1.9	1.9	1.9
UNEMPLOYMENT	0.1	0.1	0.1	0.1	0.2	0.2	0.1	0.1	0.1	0.1	0.1	0.1	0.1	0.1
UNEMPLOYMENT RATE	3.4%	4.1%	3.9%	6.4%	10.9%	8.3%	5.6%	6.0%	5.9%	5.4%	5.2%	4.5%	4.5%	5.9%
Nye County - Non-Seasonally Adjusted														
LABOR FORCE	17.5	17.8	17.9	18.0	17.2	16.7	17.1	17.1	17.3	17.9	18.0	17.4	17.3	17.5
EMPLOYMENT	16.7	17.0	17.1	16.5	13.9	14.1	15.5	15.4	15.6	16.3	16.4	16.0	16.0	15.8
UNEMPLOYMENT	0.8	0.9	0.9	1.5	3.4	2.6	1.6	1.7	1.7	1.6	1.6	1.4	1.2	1.7
UNEMPLOYMENT RATE	4.5%	5.0%	4.9%	8.4%	19.5%	15.3%	9.5%	9.9%	9.7%	9.0%	8.9%	7.8%	7.2%	9.6%
Pershing County - Non-Seasonally Adjusted														
LABOR FORCE	2.5	2.6	2.6	2.7	2.4	2.3	2.4	2.3	2.3	2.4	2.5	2.4	2.3	2.4
EMPLOYMENT	2.4	2.5	2.5	2.5	2.2	2.1	2.3	2.2	2.2	2.3	2.4	2.3	2.2	2.3
UNEMPLOYMENT	0.1	0.1	0.1	0.2	0.2	0.1	0.1	0.1	0.1	0.1	0.1	0.1	0.1	0.1
UNEMPLOYMENT RATE	3.8%	4.0%	4.4%	6.7%	9.1%	6.3%	4.3%	4.6%	4.9%	4.4%	3.8%	3.8%	4.1%	5.0%
Storey County - Non-Seasonally Adjusted														
LABOR FORCE	2.1	2.1	2.1	2.1	1.8	1.7	1.9	1.9	2.0	2.0	2.0	2.0	2.0	2.0
EMPLOYMENT	2.0	2.0	2.0	1.9	1.4	1.5	1.8	1.8	1.8	1.9	1.9	1.9	1.9	1.8
UNEMPLOYMENT	0.1	0.1	0.1	0.1	0.4	0.3	0.2	0.2	0.2	0.1	0.1	0.1	0.1	0.2
UNEMPLOYMENT RATE	3.5%	3.8%	3.8%	6.4%	22.7%	15.9%	8.9%	8.7%	7.8%	7.4%	6.8%	6.1%	5.7%	8.7%
Washoe County - Non-Seasonally Adjusted														
LABOR FORCE	259.6	258.4	261.7	259.5	221.9	219.7	243.8	243.3	244.5	253.6	253.4	248.0	249.5	246.4
EMPLOYMENT	252.5	249.6	253.3	244.9	176.6	184.5	222.6	223.4	226.6	236.6	237.4	234.1	237.0	227.2
UNEMPLOYMENT	7.1	8.8	8.4	14.6	45.3	35.2	21.2	19.9	17.8	16.9	16.0	13.9	12.5	19.2
UNEMPLOYMENT RATE	2.7%	3.4%	3.2%	5.6%	20.4%	16.0%	8.7%	8.2%	7.3%	6.7%	6.3%	5.6%	5.0%	8.0%
White Pine County - Non-Seasonally Adjusted														
LABOR FORCE	4.6	4.7	4.7	4.7	4.4	4.3	4.4	4.4	4.4	4.6	4.6	4.5	4.5	4.5
EMPLOYMENT	4.5	4.5	4.5	4.5	4.0	4.1	4.2	4.2	4.2	4.4	4.4	4.3	4.3	4.3
UNEMPLOYMENT	0.1	0.1	0.2	0.2	0.3	0.2	0.2	0.2	0.2	0.2	0.2	0.1	0.1	0.2
UNEMPLOYMENT RATE	2.5%	3.0%	3.3%	5.2%	7.7%	5.4%	4.0%	4.0%	4.2%	3.8%	3.6%	3.3%	3.1%	4.2%
Carson City - Non-Seasonally Adjusted														
LABOR FORCE	26.3	26.6	26.9	26.8	23.6	22.7	25.0	25.4	25.6	26.5	26.3	24.8	24.8	25.4
EMPLOYMENT	25.4	25.5	25.8	24.9	18.6	19.3	22.8	23.4	23.7	24.7	24.6	23.3	23.4	23.3
UNEMPLOYMENT	0.9	1.1	1.1	1.9	5.0	3.5	2.2	2.1	1.9	1.8	1.7	1.5	1.4	2.1
UNEMPLOYMENT RATE	3.4%	4.1%	4.1%	7.1%	21.1%	15.2%	8.8%	8.1%	7.3%	6.9%	6.6%	6.1%	5.7%	8.4%

Note: Unemployment rates are based on unrounded data.

Employment adjusted by census relationships to reflect number of persons by place of residence.

Information compiled by DETR's Research & Analysis Bureau

Micropolitan Areas LAUS Last 13 Months (Estimates in Thousands)

	Dec-19	Jan-20	Feb-20	Mar-20	Apr-20	May-20	Jun-20	Jul-20	Aug-20	Sep-20	Oct-20	Nov-20	Dec-20	12m Avg.
Elko Micropolitan Area - Non-Seasonally Adjusted														
LABOR FORCE	27.7	28.2	28.2	28.5	27.9	27.5	26.7	26.4	26.5	27.5	27.9	26.9	26.8	27.4
EMPLOYMENT	27.0	27.3	27.3	27.1	24.1	24.3	25.3	25.0	25.2	26.4	26.7	25.9	25.8	25.9
UNEMPLOYMENT	0.7	0.9	0.9	1.4	3.8	3.2	1.4	1.3	1.2	1.2	1.2	1.0	1.0	1.5
UNEMPLOYMENT RATE	2.6%	3.2%	3.2%	5.1%	13.7%	11.6%	5.3%	5.0%	4.7%	4.3%	4.2%	3.8%	3.5%	5.6%
Fallon Micropolitan Area - Non-Seasonally Adjusted														
LABOR FORCE	11.1	11.4	11.3	11.5	10.6	10.2	10.7	10.5	10.5	11.0	11.3	10.8	10.6	10.9
EMPLOYMENT	10.7	11.0	10.9	10.8	9.4	9.4	10.1	9.9	9.9	10.5	10.7	10.3	10.2	10.3
UNEMPLOYMENT	0.3	0.4	0.4	0.7	1.2	0.9	0.6	0.6	0.6	0.5	0.5	0.5	0.4	0.6
UNEMPLOYMENT RATE	3.0%	3.7%	3.6%	6.1%	11.3%	8.6%	5.7%	5.8%	5.3%	4.7%	4.5%	4.2%	3.8%	5.6%
Fernley Micropolitan Area - Non-Seasonally Adjusted														
LABOR FORCE	23.2	23.5	23.6	23.9	22.1	21.2	22.2	22.2	22.3	23.2	23.3	22.4	22.3	22.7
EMPLOYMENT	22.2	22.3	22.5	22.0	18.0	18.3	20.3	20.3	20.6	21.5	21.7	20.9	21.0	20.8
UNEMPLOYMENT	1.0	1.2	1.2	2.0	4.2	2.9	1.9	1.9	1.8	1.7	1.6	1.5	1.3	1.9
UNEMPLOYMENT RATE	4.1%	5.0%	5.0%	8.2%	18.9%	13.8%	8.5%	8.4%	8.0%	7.3%	7.0%	6.6%	6.0%	8.6%
Gardnerville Micropolitan Area - Non-Seasonally Adjusted														
LABOR FORCE	23.1	23.3	23.5	23.4	22.8	22.1	22.7	22.6	22.7	23.6	23.6	22.7	22.6	23.0
EMPLOYMENT	22.3	22.4	22.6	21.8	18.5	18.8	20.7	20.7	21.0	22.0	22.1	21.3	21.3	21.1
UNEMPLOYMENT	0.8	0.9	0.9	1.6	4.3	3.3	2.1	1.8	1.7	1.6	1.6	1.4	1.2	1.9
UNEMPLOYMENT RATE	3.5%	4.0%	4.0%	6.8%	18.8%	14.9%	9.1%	8.1%	7.5%	7.0%	6.6%	6.0%	5.4%	8.2%
Pahrump Micropolitan Area - Non-Seasonally Adjusted														
LABOR FORCE	17.5	17.8	17.9	18.0	17.2	16.7	17.1	17.1	17.3	17.9	18.0	17.4	17.3	17.5
EMPLOYMENT	16.7	17.0	17.1	16.5	13.9	14.1	15.5	15.4	15.6	16.3	16.4	16.0	16.0	15.8
UNEMPLOYMENT	0.8	0.9	0.9	1.5	3.4	2.6	1.6	1.7	1.7	1.6	1.6	1.4	1.2	1.7
UNEMPLOYMENT RATE	4.5%	5.0%	4.9%	8.4%	19.5%	15.3%	9.5%	9.9%	9.7%	9.0%	8.9%	7.8%	7.2%	9.6%
Winnemucca Micropolitan Area - Non-Seasonally Adjusted														
LABOR FORCE	8.1	8.4	8.3	8.5	7.7	7.6	7.8	7.6	7.6	8.0	8.3	7.8	7.7	7.9
EMPLOYMENT	7.9	8.1	8.0	8.1	7.1	7.0	7.4	7.2	7.2	7.7	7.9	7.5	7.4	7.5
UNEMPLOYMENT	0.2	0.3	0.3	0.4	0.6	0.6	0.4	0.4	0.4	0.4	0.4	0.3	0.3	0.4
UNEMPLOYMENT RATE	2.6%	3.2%	3.3%	5.2%	8.4%	7.8%	5.1%	5.1%	4.9%	4.5%	4.3%	4.0%	3.7%	4.9%

Note: Unemployment rates are based on unrounded data.

Employment adjusted by census relationships to reflect number of persons by place of residence.

Information compiled by DETR's Research & Analysis Bureau

Northern Cities LAUS Last 13 Months (Estimates in Thousands)

	Dec-19	Jan-20	Feb-20	Mar-20	Apr-20	May-20	Jun-20	Jul-20	Aug-20	Sep-20	Oct-20	Nov-20	Dec-20	12m Avg.
Fernley City* - Non-Seasonally Adjusted														
LABOR FORCE	8.6	8.7	8.8	8.9	8.3	8.0	8.3	8.3	8.3	8.7	8.7	8.4	8.3	8.5
EMPLOYMENT	8.3	8.3	8.3	8.2	6.7	6.8	7.6	7.5	7.6	8.0	8.1	7.8	7.8	7.7
UNEMPLOYMENT	0.4	0.4	0.4	0.8	1.7	1.2	0.7	0.7	0.7	0.7	0.6	0.6	0.5	0.8
UNEMPLOYMENT RATE	4.3%	4.9%	4.9%	8.4%	20.0%	14.7%	9.0%	8.8%	8.5%	7.7%	7.5%	7.0%	6.1%	9.0%
Elko City* - Non-Seasonally Adjusted														
LABOR FORCE	10.4	10.6	10.6	10.7	10.2	10.0	10.0	9.9	10.0	10.4	10.5	10.2	10.1	10.3
EMPLOYMENT	10.1	10.2	10.2	10.1	9.0	9.2	9.5	9.4	9.5	9.9	10.0	9.7	9.7	9.7
UNEMPLOYMENT	0.3	0.4	0.4	0.6	1.2	0.9	0.5	0.5	0.5	0.5	0.5	0.4	0.4	0.5
UNEMPLOYMENT RATE	2.6%	3.4%	3.3%	5.5%	11.6%	8.6%	5.0%	4.9%	4.8%	4.5%	4.4%	4.1%	3.7%	5.3%
Reno - Non-Seasonally Adjusted														
LABOR FORCE	140.0	139.3	141.1	139.7	120.5	119.7	132.1	131.8	132.3	137.2	136.9	133.9	134.6	133.2
EMPLOYMENT	136.2	134.6	136.6	132.1	95.3	99.5	120.0	120.5	122.2	127.6	128.0	126.3	127.8	122.6
UNEMPLOYMENT	3.8	4.7	4.5	7.6	25.2	20.2	12.0	11.3	10.1	9.5	8.9	7.6	6.8	10.7
UNEMPLOYMENT RATE	2.7%	3.4%	3.2%	5.5%	20.9%	16.9%	9.1%	8.5%	7.6%	7.0%	6.5%	5.7%	5.0%	8.3%
Sparks - Non-Seasonally Adjusted														
LABOR FORCE	58.2	57.9	58.7	58.2	50.2	49.5	54.7	54.6	54.9	56.9	56.9	55.6	56.0	55.3
EMPLOYMENT	56.7	56.0	56.9	55.0	39.6	41.4	50.0	50.1	50.9	53.1	53.3	52.5	53.2	51.0
UNEMPLOYMENT	1.6	1.9	1.8	3.2	10.5	8.1	4.8	4.5	4.0	3.8	3.6	3.1	2.8	4.3
UNEMPLOYMENT RATE	2.7%	3.2%	3.1%	5.5%	21.0%	16.3%	8.7%	8.2%	7.4%	6.7%	6.3%	5.5%	5.0%	8.1%

* State Specific Areas, not endorsed or published by the BLS

Note: Unemployment rates are based on unrounded data.

Employment adjusted by census relationships to reflect number of persons by place of residence.

Information compiled by DETR's Research & Analysis Bureau

Southern Cities LAUS Last 13 Months (Estimates in Thousands)

	Dec-19	Jan-20	Feb-20	Mar-20	Apr-20	May-20	Jun-20	Jul-20	Aug-20	Sep-20	Oct-20	Nov-20	Dec-20	12m Avg.
Boulder City* - Non-Seasonally Adjusted														
LABOR FORCE	7.6	7.7	7.7	7.6	6.2	6.0	6.9	6.9	7.0	7.2	7.3	7.0	7.0	7.1
EMPLOYMENT	7.3	7.4	7.4	7.1	4.7	4.9	6.1	6.2	6.2	6.5	6.6	6.5	6.5	6.3
UNEMPLOYMENT	0.3	0.3	0.3	0.5	1.6	1.2	0.8	0.8	0.7	0.7	0.7	0.5	0.5	0.7
UNEMPLOYMENT RATE	3.5%	3.9%	3.7%	6.7%	25.0%	19.3%	11.6%	11.0%	10.5%	9.6%	9.7%	7.8%	7.3%	10.5%
Henderson - Non-Seasonally Adjusted														
LABOR FORCE	164.0	165.3	166.6	164.5	143.1	138.1	154.7	154.7	154.9	160.7	161.0	155.9	154.3	156.1
EMPLOYMENT	158.8	159.4	160.6	153.7	100.8	105.0	132.1	133.3	134.9	141.3	142.3	140.2	140.7	137.0
UNEMPLOYMENT	5.2	5.9	6.0	10.8	42.3	33.1	22.6	21.4	20.0	19.4	18.7	15.7	13.6	19.1
UNEMPLOYMENT RATE	3.2%	3.6%	3.6%	6.5%	29.5%	23.9%	14.6%	13.8%	12.9%	12.1%	11.6%	10.1%	8.8%	12.6%
Las Vegas - Non-Seasonally Adjusted														
LABOR FORCE	316.2	319.1	321.2	318.4	285.3	276.7	304.7	304.1	304.4	315.1	315.8	305.0	301.3	305.9
EMPLOYMENT	305.0	306.3	308.6	295.3	193.7	201.7	253.8	256.2	259.1	271.4	273.3	269.4	270.3	263.3
UNEMPLOYMENT	11.2	12.8	12.6	23.1	91.6	74.9	50.9	47.9	45.3	43.7	42.5	35.6	31.0	42.7
UNEMPLOYMENT RATE	3.5%	4.0%	3.9%	7.3%	32.1%	27.1%	16.7%	15.8%	14.9%	13.9%	13.5%	11.7%	10.3%	14.3%
Mesquite* - Non-Seasonally Adjusted														
LABOR FORCE	8.0	8.1	8.1	7.9	6.8	6.8	7.0	7.1	7.1	7.4	7.5	7.3	7.3	7.4
EMPLOYMENT	7.7	7.8	7.8	7.5	4.9	5.1	6.4	6.5	6.6	6.9	6.9	6.8	6.9	6.7
UNEMPLOYMENT	0.2	0.3	0.2	0.4	1.9	1.6	0.6	0.6	0.5	0.5	0.5	0.4	0.4	0.7
UNEMPLOYMENT RATE	2.9%	3.4%	3.1%	4.6%	27.7%	24.2%	8.6%	8.0%	7.4%	6.9%	7.2%	6.1%	5.6%	9.4%
North Las Vegas - Non-Seasonally Adjusted														
LABOR FORCE	115.5	116.7	117.4	117.0	105.1	102.8	112.4	111.9	111.8	115.8	116.5	112.5	110.9	112.6
EMPLOYMENT	111.1	111.6	112.4	107.6	70.6	73.5	92.5	93.3	94.4	98.9	99.6	98.1	98.5	95.9
UNEMPLOYMENT	4.4	5.1	5.0	9.4	34.6	29.3	20.0	18.5	17.4	16.9	16.9	14.4	12.4	16.7
UNEMPLOYMENT RATE	3.8%	4.4%	4.3%	8.0%	32.9%	28.5%	17.7%	16.6%	15.5%	14.6%	14.5%	12.8%	11.2%	15.1%

* State Specific Areas, not endorsed or published by the BLS

Note: Unemployment rates are based on unrounded data.

Employment adjusted by census relationships to reflect number of persons by place of residence.

Information compiled by DETR's Research & Analysis Bureau

CES Summary Tables

Seasonally Adjusted CES Sectors: Nevada

Series	December 2020	+/- November 2020	Monthly Rate	+/- December 2019	Yearly Rate	Maximum	Percent of Total
Total nonfarm	1,328,300	8,200	0.6%	-96,900	-6.8%	1,429,600	100.0%
Total private	1,176,300	10,600	0.9%	-82,000	-6.5%	1,263,700	88.6%
Goods-producing	167,900	1,400	0.8%	-3,500	-2.0%	208,100	12.6%
Mining and logging	16,300	-300	-1.8%	2,100	14.8%	16,600	1.2%
Construction	93,100	1,500	1.6%	-4,800	-4.9%	146,400	7.0%
Manufacturing	58,500	200	0.3%	-800	-1.3%	59,900	4.4%
Durable goods	38,400	0	0.0%	-1,400	-3.5%	40,700	2.9%
Nondurable goods	20,100	200	1.0%	600	3.1%	20,100	1.5%
Service-providing	1,160,400	6,800	0.6%	-93,400	-7.4%	1,258,500	87.4%
Private service-providing	1,008,400	9,200	0.9%	-78,500	-7.2%	1,092,600	75.9%
Trade, transportation, and utilities	255,300	5,100	2.0%	-5,500	-2.1%	263,200	19.2%
Wholesale Trade	34,200	-200	-0.6%	-2,500	-6.8%	39,100	2.6%
Retail trade	145,700	1,500	1.0%	-2,000	-1.4%	149,200	11.0%
Transportation, Warehousing, and Utilities	75,400	3,800	5.3%	-1,000	-1.3%	76,400	5.7%
Information	13,700	-200	-1.4%	-2,100	-13.3%	21,400	1.0%
Financial activities	70,700	-300	-0.4%	200	0.3%	71,000	5.3%
Finance and insurance	40,400	-700	-1.7%	300	0.7%	41,100	3.0%
Real estate and rental and leasing	30,300	400	1.3%	-100	-0.3%	30,400	2.3%
Professional and business services	183,300	3,000	1.7%	-15,800	-7.9%	204,500	13.8%
Professional and technical services	63,300	1,400	2.3%	0	0.0%	64,500	4.8%
Management of companies and enterprises	22,400	600	2.8%	-5,000	-18.2%	27,500	1.7%
Administrative and waste services	97,600	1,000	1.0%	-10,800	-10.0%	112,800	7.3%
Education and health services	143,300	3,400	2.4%	-800	-0.6%	146,400	10.8%
Educational services	11,200	-200	-1.8%	-2,500	-18.2%	13,900	0.8%
Health care and social assistance	132,100	3,600	2.8%	1,700	1.3%	132,600	9.9%
Leisure and hospitality	305,400	-2,000	-0.7%	-50,000	-14.1%	356,400	23.0%
Arts, entertainment, and recreation	33,000	-100	-0.3%	-2,200	-6.2%	35,300	2.5%
Accommodation and food services	272,400	-1,900	-0.7%	-47,800	-14.9%	322,600	20.5%
Other services	36,700	200	0.5%	-4,500	-10.9%	42,200	2.8%
Government	152,000	-2,400	-1.6%	-14,900	-8.9%	167,100	11.4%
Federal	20,600	0	0.0%	900	4.6%	23,100	1.6%
State government	39,800	-300	-0.7%	-1,200	-2.9%	44,200	3.0%
Local government	91,600	-2,100	-2.2%	-14,600	-13.7%	107,700	6.9%

Nevada Seasonally Adjusted CES Last 13 Months (Estimates in Thousands)

	Dec-19	Jan-20	Feb-20	Mar-20	Apr-20	May-20	Jun-20	Jul-20	Aug-20	Sep-20	Oct-20	Nov-20	Dec-20	12m Avg.
Total nonfarm	1,425.2	1,429.6	1,426.3	1,404.6	1,139.0	1,167.5	1,266.3	1,283.3	1,293.5	1,301.7	1,308.6	1,320.1	1,328.3	1,305.7
Total private	1,258.3	1,263.7	1,259.5	1,237.5	981.3	1,009.9	1,111.7	1,126.4	1,134.3	1,147.6	1,155.0	1,165.7	1,176.3	1,147.4
Goods-producing	171.4	171.1	173.0	176.7	166.2	170.7	167.8	168.8	166.7	167.1	169.4	166.5	167.9	169.3
Mining and logging	14.2	14.0	14.3	14.5	14.2	15.3	15.3	15.9	15.9	16.3	16.5	16.6	16.3	15.4
Construction	97.9	98.0	99.4	103.3	94.7	98.6	95.6	94.2	93.6	93.4	95.1	91.6	93.1	95.9
Manufacturing	59.3	59.1	59.3	58.9	57.3	56.8	56.9	58.7	57.2	57.4	57.8	58.3	58.5	58.0
Durable goods	39.8	39.6	39.6	39.1	37.9	37.4	37.7	39.4	37.6	37.6	38.2	38.4	38.4	38.4
Nondurable goods	19.5	19.5	19.7	19.8	19.4	19.4	19.2	19.3	19.6	19.8	19.6	19.9	20.1	19.6
Service-providing	1,253.8	1,258.5	1,253.3	1,227.9	972.8	996.8	1,098.5	1,114.5	1,126.8	1,134.6	1,139.2	1,153.6	1,160.4	1,136.4
Private service-providing	1,086.9	1,092.6	1,086.5	1,060.8	815.1	839.2	943.9	957.6	967.6	980.5	985.6	999.2	1,008.4	978.1
Trade, transportation, and utilities	260.8	259.4	258.6	254.6	213.9	219.0	231.6	233.3	237.9	244.0	245.5	250.2	255.3	241.9
Wholesale Trade	36.7	36.2	36.4	36.0	30.1	32.0	32.7	32.8	31.1	33.0	32.4	34.4	34.2	33.4
Retail trade	147.7	147.5	146.6	143.8	118.7	119.8	131.9	133.6	139.2	140.2	141.2	144.2	145.7	137.7
Transportation, Warehousing, and Utilities	76.4	75.7	75.6	74.8	65.1	67.2	67.0	66.9	67.6	70.8	71.9	71.6	75.4	70.8
Information	15.8	15.7	15.7	15.6	14.1	14.1	13.8	13.7	13.6	13.6	13.6	13.9	13.7	14.3
Financial activities	70.5	70.2	69.7	68.4	66.3	67.3	67.5	68.4	69.2	68.1	68.4	71.0	70.7	68.8
Finance and insurance	40.1	39.9	39.6	39.0	38.6	38.4	38.5	38.7	39.2	38.8	39.0	41.1	40.4	39.3
Real estate and rental and leasing	30.4	30.3	30.1	29.4	27.7	28.9	29.0	29.7	30.0	29.3	29.4	29.9	30.3	29.5
Professional and business services	199.1	204.5	200.0	197.8	157.9	155.5	164.6	170.1	170.6	175.5	178.2	180.3	183.3	178.2
Professional and technical services	63.3	64.5	63.4	63.4	60.9	58.8	59.7	61.0	60.2	61.2	62.2	61.9	63.3	61.7
Management of companies and enterprises	27.4	27.2	27.0	27.3	18.9	17.9	18.7	19.6	19.4	21.1	21.5	21.8	22.4	21.9
Administrative and waste services	108.4	112.8	109.6	107.1	78.1	78.8	86.2	89.5	91.0	93.2	94.5	96.6	97.6	94.6
Education and health services	144.1	145.9	146.4	145.0	128.5	129.0	132.8	135.9	138.5	140.4	140.0	139.9	143.3	138.8
Educational services	13.7	13.9	13.8	13.4	11.8	11.7	10.7	11.2	12.0	11.8	11.4	11.4	11.2	12.0
Health care and social assistance	130.4	132.0	132.6	131.6	116.7	117.3	122.1	124.7	126.5	128.6	128.6	128.5	132.1	126.8
Leisure and hospitality	355.4	355.4	354.4	338.5	203.6	221.1	297.6	301.4	300.7	302.2	303.2	307.4	305.4	299.2
Arts, entertainment, and recreation	35.2	35.3	35.3	32.9	27.5	31.0	34.2	32.6	32.9	33.0	32.1	33.1	33.0	32.7
Accommodation and food services	320.2	320.1	319.1	305.6	176.1	190.1	263.4	268.8	267.8	269.2	271.1	274.3	272.4	266.5
Other services	41.2	41.5	41.7	40.9	30.8	33.2	36.0	34.8	37.1	36.7	36.7	36.5	36.7	36.9
Government	166.9	165.9	166.8	167.1	157.7	157.6	154.6	156.9	159.2	154.1	153.6	154.4	152.0	158.3
Federal	19.7	19.9	20.1	20.2	20.2	20.3	20.3	20.6	23.0	22.3	21.4	20.6	20.6	20.8
State government	41.0	40.8	40.8	40.7	40.7	40.8	43.6	44.2	44.2	39.9	39.1	40.1	39.8	41.2
Local government	106.2	105.2	105.9	106.2	96.8	96.5	90.7	92.1	92.0	91.9	93.1	93.7	91.6	96.3

UNEMPLOYMENT RATES BASED ON UNROUNDED DATA

Employment adjusted by census relationships to reflect number of persons by place of residence.

Information compiled by DETR's Research & Analysis Bureau

Non-Seasonally Adjusted CES Sectors: Nevada

Series	December 2020	+/- November 2020	Monthly Rate	+/- December 2019	Yearly Rate	Maximum	Percent of Total
Total nonfarm	1,337,100	5,600	0.4%	-95,200	-6.6%	1,438,100	100.0%
Total private	1,181,100	7,000	0.6%	-80,400	-6.4%	1,267,900	88.3%
Goods-producing	168,200	200	0.1%	-3,700	-2.2%	211,500	12.6%
Mining and logging	16,200	-400	-2.4%	2,000	14.1%	16,600	1.2%
Metal ore mining	12,300	-400	-3.1%	1,400	12.8%	12,700	0.9%
Construction	93,500	500	0.5%	-4,900	-5.0%	148,800	7.0%
Construction of buildings	17,400	0	0.0%	-800	-4.4%	26,500	1.3%
Specialty trade contractors	66,600	300	0.5%	-5,400	-7.5%	107,200	5.0%
Manufacturing	58,500	100	0.2%	-800	-1.3%	59,700	4.4%
Durable goods	38,400	0	0.0%	-1,400	-3.5%	40,600	2.9%
Miscellaneous durable goods manufacturing	7,300	100	1.4%	100	1.4%	9,000	0.5%
Other miscellaneous durable goods manufacturing	6,500	100	1.6%	0	0.0%	8,700	0.5%
Nondurable goods	20,100	100	0.5%	600	3.1%	20,100	1.5%
Service-providing	1,168,900	5,400	0.5%	-91,500	-7.3%	1,264,300	87.4%
Private service-providing	1,012,900	6,800	0.7%	-76,700	-7.0%	1,094,100	75.8%
Trade, transportation, and utilities	265,000	7,400	2.9%	-5,000	-1.9%	270,200	19.8%
Wholesale Trade	34,400	-200	-0.6%	-2,500	-6.8%	39,200	2.6%
Retail trade	151,900	3,200	2.2%	-1,800	-1.2%	155,300	11.4%
Food and beverage stores	24,900	-100	-0.4%	-200	-0.8%	25,100	1.9%
Health and personal care stores	8,900	100	1.1%	-500	-5.3%	9,700	0.7%
Transportation, Warehousing, and Utilities	78,700	4,400	5.9%	-700	-0.9%	79,400	5.9%
Utilities	4,000	0	0.0%	-100	-2.4%	5,700	0.3%
Transportation and Warehousing	74,700	4,400	6.3%	-600	-0.8%	75,300	5.6%
Transit and ground passenger transportation	7,100	-100	-1.4%	-3,300	-31.7%	15,300	0.5%
Taxi and limousine service	3,500	0	0.0%	-2,400	-40.7%	11,300	0.3%
Information	13,700	-300	-2.1%	-2,100	-13.3%	21,500	1.0%
Telecommunications	3,500	0	0.0%	-600	-14.6%	10,400	0.3%
Financial activities	71,300	500	0.7%	400	0.6%	71,300	5.3%
Finance and insurance	40,800	100	0.2%	400	1.0%	40,800	3.1%
Credit intermediation and related activities	21,400	100	0.5%	900	4.4%	25,200	1.6%
Real estate and rental and leasing	30,500	400	1.3%	0	0.0%	30,500	2.3%
Professional and business services	182,200	100	0.1%	-15,600	-7.9%	203,700	13.6%
Professional and technical services	63,700	1,700	2.7%	-100	-0.2%	64,100	4.8%
Management of companies and enterprises	22,500	500	2.3%	-5,000	-18.2%	27,600	1.7%
Administrative and waste services	96,000	-2,100	-2.1%	-10,500	-9.9%	112,800	7.2%
Administrative and support services	92,100	-2,200	-2.3%	-9,100	-9.0%	107,700	6.9%
Employment services	23,000	-100	-0.4%	-3,100	-11.9%	33,700	1.7%
Education and health services	143,900	3,700	2.6%	-900	-0.6%	146,200	10.8%
Educational services	11,400	-200	-1.7%	-2,500	-18.0%	14,100	0.9%
Health care and social assistance	132,500	3,900	3.0%	1,600	1.2%	132,500	9.9%
Ambulatory health care services	60,700	1,700	2.9%	2,500	4.3%	60,700	4.5%
Hospitals	33,600	100	0.3%	200	0.6%	33,700	2.5%
Leisure and hospitality	300,700	-3,900	-1.3%	-49,100	-14.0%	360,300	22.5%
Arts, entertainment, and recreation	32,000	0	0.0%	-2,200	-6.4%	35,500	2.4%
Amusements, gambling, and recreation	23,400	300	1.3%	-2,400	-9.3%	27,200	1.8%
Gambling industries	9,100	200	2.2%	-1,200	-11.7%	13,800	0.7%
Accommodation and food services	268,700	-3,900	-1.4%	-46,900	-14.9%	325,000	20.1%
Accommodation	152,800	-2,100	-1.4%	-31,900	-17.3%	219,700	11.4%
Casino hotels	127,900	-2,100	-1.6%	-39,500	-23.6%	210,000	9.6%
Food services and drinking places	115,900	-1,800	-1.5%	-15,000	-11.5%	134,000	8.7%
Restaurants and other eating places	108,300	-3,200	-2.9%	-8,300	-7.1%	119,100	8.1%
Full-service restaurants	62,100	-1,600	-2.5%	-300	-0.5%	64,200	4.6%
Limited-service eating places	46,200	-1,600	-3.3%	-8,000	-14.8%	55,100	3.5%
Other services	36,100	-700	-1.9%	-4,400	-10.9%	42,700	2.7%
Government	156,000	-1,400	-0.9%	-14,800	-8.7%	170,800	11.7%
Federal	20,800	100	0.5%	900	4.5%	23,200	1.6%
State government	41,500	-400	-1.0%	-1,200	-2.8%	43,700	3.1%
State government education	21,800	-300	-1.4%	-900	-4.0%	23,800	1.6%
State government, excluding education	19,700	-100	-0.5%	-300	-1.5%	20,200	1.5%
Local government	93,700	-1,100	-1.2%	-14,500	-13.4%	109,500	7.0%
Local government education	48,500	-100	-0.2%	-11,300	-18.9%	59,800	3.6%
Local government, excluding education	45,200	-1,000	-2.2%	-3,200	-6.6%	49,400	3.4%

Nevada Non-Seasonally Adjusted CES Last 13 Months (Estimates in Thousands)

	Dec-19	Jan-20	Feb-20	Mar-20	Apr-20	May-20	Jun-20	Jul-20	Aug-20	Sep-20	Oct-20	Nov-20	Dec-20	12m Avg.
Total nonfarm	1,432.3	1,411.3	1,417.7	1,396.8	1,138.1	1,169.7	1,269.4	1,278.1	1,292.4	1,306.6	1,320.5	1,331.5	1,337.1	1,305.8
Goods-producing	171.9	168.5	169.8	174.3	164.9	169.8	169.5	171.2	168.9	168.6	170.4	168.0	168.2	169.3
Mining and logging	14.2	13.7	14.1	14.3	14.2	15.3	15.6	16.2	16.2	16.4	16.6	16.6	16.2	15.4
Metal ore mining	10.9	10.7	10.6	10.9	11.0	12.0	12.0	12.5	12.5	12.6	12.7	12.7	12.3	11.9
Construction	98.4	96.0	96.7	101.5	93.7	97.9	96.6	95.9	95.2	94.6	95.8	93.0	93.5	95.9
Construction of buildings	18.2	17.4	17.5	17.6	16.7	17.1	17.4	17.3	17.3	17.6	17.1	17.4	17.4	17.3
Specialty trade contractors	72.0	70.5	70.8	75.2	70.3	71.9	70.9	69.7	69.3	67.6	68.8	66.3	66.6	69.8
Manufacturing	59.3	58.8	59.0	58.5	57.0	56.6	57.3	59.1	57.5	57.6	58.0	58.4	58.5	58.0
Durable goods	39.8	39.3	39.4	38.8	37.7	37.2	38.1	39.8	37.9	37.8	38.3	38.4	38.4	38.4
Nondurable goods	19.5	19.5	19.6	19.7	19.3	19.4	19.2	19.3	19.6	19.8	19.7	20.0	20.1	19.6
Service-providing	1,260.4	1,242.8	1,247.9	1,222.5	973.2	999.9	1,099.9	1,106.9	1,123.5	1,138.0	1,150.1	1,163.5	1,168.9	1,136.4
Private service-providing	1,089.6	1,079.6	1,078.5	1,052.3	813.0	840.2	948.6	959.2	972.1	981.6	993.3	1,006.1	1,012.9	978.1
Trade, transportation, and utilities	270.0	258.3	256.6	250.9	211.1	217.0	230.4	232.2	237.0	242.5	247.5	257.6	265.0	242.2
Wholesale Trade	36.9	36.3	36.3	35.8	29.9	31.9	32.6	32.9	31.2	33.1	32.6	34.6	34.4	33.5
Retail trade	153.7	146.4	145.4	141.2	116.9	118.6	131.2	133.1	138.8	139.3	142.4	148.7	151.9	137.8
Food and beverage stores	25.1	24.7	24.8	24.7	23.3	23.4	24.1	24.1	24.2	24.5	24.5	25.0	24.9	24.4
Health and personal care stores	9.4	9.1	9.0	9.0	8.3	8.3	8.3	8.3	8.4	8.4	8.4	8.8	8.9	8.6
Transportation, Warehousing, and Utilities	79.4	75.6	74.9	73.9	64.3	66.5	66.6	66.2	67.0	70.1	72.5	74.3	78.7	70.9
Utilities	4.1	4.1	4.1	4.1	4.1	4.1	4.1	4.1	4.1	4.0	4.0	4.0	4.0	4.1
Transportation and Warehousing	75.3	71.5	70.8	69.8	60.2	62.4	62.5	62.1	62.9	66.1	68.5	70.3	74.7	66.8
Transit and ground passenger transportation	10.4	10.4	10.4	10.3	6.8	6.7	6.7	6.6	6.8	6.7	7.2	7.2	7.1	7.7
Taxi and limousine service	5.9	5.9	5.8	5.7	3.5	3.5	3.4	3.3	3.4	3.3	3.5	3.5	3.5	4.0
Information	15.8	15.4	15.6	15.4	14.1	14.2	14.1	13.6	13.6	13.5	13.8	14.0	13.7	14.2
Telecommunications	4.1	4.0	4.0	4.0	3.6	3.6	3.6	3.6	3.6	3.6	3.5	3.5	3.5	3.7
Financial activities	70.9	69.9	69.5	68.3	66.1	67.3	68.1	68.1	69.3	67.7	68.9	70.8	71.3	68.8
Finance and insurance	40.4	40.3	39.6	39.1	38.4	38.2	38.7	38.6	39.3	38.5	39.1	40.7	40.8	39.3
Credit intermediation and related activities	20.5	20.5	20.5	20.2	19.9	19.8	20.1	20.3	20.6	20.1	20.4	21.3	21.4	20.4
Real estate and rental and leasing	30.5	29.6	29.9	29.2	27.7	29.1	29.4	29.5	30.0	29.2	29.8	30.1	30.5	29.5
Professional and business services	197.8	203.7	199.6	196.1	157.7	155.4	164.6	168.9	171.5	175.3	180.5	182.1	182.2	178.1
Professional and technical services	63.8	64.0	63.6	63.4	61.4	58.8	59.3	60.9	60.2	61.1	62.9	62.0	63.7	61.8
Management of companies and enterprises	27.5	26.9	26.7	27.1	18.7	17.8	18.7	19.5	19.6	21.3	21.8	22.0	22.5	21.9
Administrative and waste services	106.5	112.8	109.3	105.6	77.6	78.8	86.6	88.5	91.7	92.9	95.8	98.1	96.0	94.5
Administrative and support services	101.2	107.7	104.1	100.5	74.3	75.7	83.6	85.4	88.6	89.7	92.6	94.3	92.1	90.7
Employment services	26.1	26.1	25.0	24.1	15.8	16.4	18.5	18.8	19.5	19.1	20.7	23.1	23.0	20.8
Education and health services	144.8	144.7	146.2	144.3	128.4	129.0	133.5	135.6	138.7	141.1	140.6	140.2	143.9	138.8
Educational services	13.9	13.9	14.1	13.7	12.1	11.8	10.6	10.6	11.5	11.5	11.6	11.6	11.4	12.0
Health care and social assistance	130.9	130.8	132.1	130.6	116.3	117.2	122.9	125.0	127.2	129.6	129.0	128.6	132.5	126.8
Ambulatory health care services	58.2	58.3	59.0	57.8	48.4	50.3	55.1	56.7	58.0	60.0	59.6	59.0	60.7	56.9
Hospitals	33.4	33.3	33.4	33.5	33.4	33.4	33.5	33.2	33.2	33.2	33.4	33.5	33.6	33.4
Leisure and hospitality	349.8	347.0	349.8	336.8	204.7	223.8	301.5	305.6	304.7	304.3	304.7	304.6	300.7	299.0
Arts, entertainment, and recreation	34.2	33.6	34.1	32.5	27.7	31.9	35.5	34.0	34.1	33.3	31.9	32.0	32.0	32.7
Amusements, gambling, and recreation	25.8	25.5	25.9	24.6	21.3	24.0	25.7	24.6	24.6	24.4	23.0	23.1	23.4	24.2
Accommodation and food services	315.6	313.4	315.7	304.3	177.0	191.9	266.0	271.6	270.6	271.0	272.8	272.6	268.7	266.3
Accommodation	184.7	183.4	182.8	177.6	120.3	119.6	160.4	161.0	160.0	158.7	156.1	154.9	152.8	157.3
Casino hotels	167.4	166.6	166.3	161.2	110.7	108.1	133.6	134.9	133.4	133.1	131.0	130.0	127.9	136.4
Gambling industries	10.3	10.2	10.2	9.7	7.0	7.7	9.3	9.3	9.4	9.2	8.6	8.9	9.1	9.0
Food services and drinking places	130.9	130.0	132.9	126.7	56.7	72.3	105.6	110.6	110.6	112.3	116.7	117.7	115.9	109.0
Full-service restaurants	62.4	62.7	64.1	60.6	17.7	29.3	55.1	59.4	58.6	59.3	63.4	63.7	62.1	54.7
Limited-service eating places	54.2	53.2	54.2	53.7	34.0	37.9	45.1	46.4	47.3	47.5	47.7	47.8	46.2	46.8
Other services	40.5	40.6	41.2	40.5	30.9	33.5	36.4	35.2	37.3	37.2	37.3	36.8	36.1	36.9
Government	170.8	163.2	169.4	170.2	160.2	159.7	151.3	147.7	151.4	156.4	156.8	157.4	156.0	158.3
Federal	19.9	19.8	19.8	19.9	20.0	20.3	20.5	20.7	23.2	22.4	21.3	20.7	20.8	20.8
State government	42.7	37.8	42.3	42.4	42.1	41.7	41.0	40.4	40.1	41.8	41.8	41.9	41.5	41.2
State government education	22.7	17.8	22.3	22.3	21.9	21.5	20.9	20.5	20.3	22.1	22.1	22.1	21.8	21.3
State government, excluding education	20.0	20.0	20.0	20.1	20.2	20.2	20.1	19.9	19.8	19.7	19.7	19.8	19.7	19.9
Local government	108.2	105.6	107.3	107.9	98.1	97.7	89.8	86.6	88.1	92.2	93.7	94.8	93.7	96.3
Local government education	59.8	57.0	58.6	59.3	53.5	53.1	44.1	40.5	42.4	46.9	48.2	48.6	48.5	50.1
Local government, excluding education	48.4	48.6	48.7	48.6	44.6	44.6	45.7	46.1	45.7	45.3	45.5	46.2	45.2	46.2

UNEMPLOYMENT RATES BASED ON UNROUNDED DATA

Employment adjusted by census relationships to reflect number of persons by place of residence.

Information compiled by DETR's Research & Analysis Bureau

Non-Seasonally Adjusted CES Sectors: Las Vegas - Paradise MSA

Series	December 2020	+/- November 2020	Monthly Rate	+/- December 2019	Yearly Rate	Maximum	Percent of Total
Total nonfarm	947,000	3,900	0.4%	-98,600	-9.4%	1,050,900	100.0%
Total private	841,000	3,100	0.4%	-94,200	-10.1%	940,800	88.8%
Goods-producing	94,200	-700	-0.7%	-6,000	-6.0%	139,900	9.9%
Mining and logging	600	0	0.0%	100	20.0%	700	0.1%
Construction	68,200	-700	-1.0%	-5,300	-7.2%	112,000	7.2%
Construction of buildings	11,400	0	0.0%	-700	-5.8%	19,400	1.2%
Specialty trade contractors	53,700	-300	-0.6%	-2,400	-4.3%	82,500	5.7%
Building foundation and exterior contractors	14,300	0	0.0%	-600	-4.0%	30,400	1.5%
Building finishing contractors	13,400	300	2.3%	-800	-5.6%	21,500	1.4%
Manufacturing	25,400	0	0.0%	-800	-3.1%	27,700	2.7%
Durable goods	14,000	0	0.0%	-800	-5.4%	18,200	1.5%
Other miscellaneous durable goods manufacturing	4,200	100	2.4%	100	2.4%	5,100	0.4%
Nondurable goods	11,400	0	0.0%	0	0.0%	11,600	1.2%
Service-providing	852,800	4,600	0.5%	-92,600	-9.8%	950,700	90.1%
Private service-providing	746,800	3,800	0.5%	-88,200	-10.6%	840,600	78.9%
Trade, transportation, and utilities	188,900	3,500	1.9%	-1,600	-0.8%	190,800	19.9%
Wholesale Trade	22,600	0	0.0%	-2,300	-9.2%	24,900	2.4%
Retail trade	112,100	1,700	1.5%	-300	-0.3%	115,900	11.8%
Food and beverage stores	19,300	-100	-0.5%	600	3.2%	19,400	2.0%
Health and personal care stores	7,100	100	1.4%	-700	-9.0%	8,200	0.7%
Transportation, Warehousing, and Utilities	54,200	1,800	3.4%	1,000	1.9%	54,200	5.7%
Utilities	2,600	0	0.0%	0	0.0%	3,500	0.3%
Transportation and Warehousing	51,600	1,800	3.6%	1,000	2.0%	51,600	5.4%
Transit and ground passenger transportation	6,100	0	0.0%	-3,400	-35.8%	14,400	0.6%
Taxi and limousine service	3,200	-100	-3.0%	-2,400	-42.9%	11,100	0.3%
Information	9,400	-200	-2.1%	-2,000	-17.5%	15,700	1.0%
Telecommunications	2,500	0	0.0%	-500	-16.7%	7,100	0.3%
Financial activities	56,200	700	1.3%	1,000	1.8%	56,200	5.9%
Finance and insurance	31,600	300	1.0%	200	0.6%	31,600	3.3%
Credit intermediation and related activities	17,100	100	0.6%	300	1.8%	19,800	1.8%
Real estate and rental and leasing	24,600	400	1.7%	800	3.4%	24,600	2.6%
Professional and business services	132,100	-600	-0.5%	-17,800	-11.9%	153,500	13.9%
Professional and technical services	44,100	1,300	3.0%	-1,500	-3.3%	46,300	4.7%
Management of companies and enterprises	16,500	300	1.9%	-6,000	-26.7%	23,000	1.7%
Administrative and waste services	71,500	-2,200	-3.0%	-10,300	-12.6%	86,400	7.6%
Administrative and support services	68,700	-2,300	-3.2%	-10,000	-12.7%	83,800	7.3%
Employment services	11,400	0	0.0%	-4,900	-30.1%	23,100	1.2%
Other support services	12,400	-700	-5.3%	2,000	19.2%	15,000	1.3%
Education and health services	104,500	2,700	2.7%	-1,200	-1.1%	106,200	11.0%
Health care and social assistance	93,900	3,700	4.1%	-1,000	-1.1%	95,800	9.9%
Ambulatory health care services	43,500	1,200	2.8%	-500	-1.1%	44,400	4.6%
Hospitals	24,600	100	0.4%	1,100	4.7%	24,600	2.6%
Leisure and hospitality	228,400	-1,600	-0.7%	-62,300	-21.4%	297,500	24.1%
Arts, entertainment, and recreation	20,100	100	0.5%	-3,600	-15.2%	24,200	2.1%
Amusements, gambling, and recreation	15,000	300	2.0%	-1,500	-9.1%	17,300	1.6%
Gambling industries	4,900	200	4.3%	-500	-9.3%	6,800	0.5%
Accommodation and food services	208,300	-1,700	-0.8%	-58,700	-22.0%	273,300	22.0%
Accommodation	123,000	-100	-0.1%	-37,600	-23.4%	184,700	13.0%
Casino hotels	114,700	-1,100	-0.9%	-31,900	-21.8%	174,900	12.1%
Food services and drinking places	85,300	-1,600	-1.8%	-21,100	-19.8%	107,900	9.0%
Restaurants and other eating places	79,800	-1,700	-2.1%	-15,100	-15.9%	95,300	8.4%
Full-service restaurants	45,600	-400	-0.9%	-7,200	-13.6%	52,900	4.8%
Limited-service eating places	34,200	-1,300	-3.7%	-7,900	-18.8%	42,700	3.6%
Other services	27,300	-700	-2.5%	-4,300	-13.6%	32,900	2.9%
Government	106,000	800	0.8%	-4,400	-4.0%	110,400	11.2%
Federal	14,400	100	0.7%	600	4.3%	16,000	1.5%
State government	18,000	-200	-1.1%	-3,200	-15.1%	22,600	1.9%
Local government	73,600	900	1.2%	-1,800	-2.4%	76,000	7.8%

Las Vegas MSA Non-Seasonally Adjusted CES Last 13 Months (Estimates in Thousands)

	Dec-19	Jan-20	Feb-20	Mar-20	Apr-20	May-20	Jun-20	Jul-20	Aug-20	Sep-20	Oct-20	Nov-20	Dec-20	12m Avg.
Total nonfarm	1,045.6	1,032.7	1,034.5	1,020.3	792.6	815.4	892.0	899.9	909.7	923.0	935.2	943.1	947.0	928.8
Total private	935.2	926.8	924.9	909.9	689.4	712.1	789.3	797.3	805.9	818.1	830.3	837.9	841.0	823.6
Goods-producing	100.2	99.5	100.0	103.1	95.1	97.4	97.7	97.1	95.7	95.6	95.6	94.9	94.2	97.2
Mining and logging	0.5	0.5	0.5	0.5	0.5	0.5	0.6	0.6	0.6	0.6	0.6	0.6	0.6	0.6
Construction	73.5	72.7	73.6	77.0	70.0	72.5	72.2	70.7	70.5	70.0	70.1	68.9	68.2	71.4
Construction of buildings	12.1	11.5	11.6	11.6	11.3	11.5	11.7	11.9	11.8	11.9	11.2	11.4	11.4	11.6
Specialty trade contractors	56.1	55.9	56.4	60.4	56.8	58.2	58.0	56.8	56.4	54.9	56.0	54.0	53.7	56.5
Building foundation and exterior contractors	14.9	14.6	14.7	15.8	14.1	14.0	13.9	13.8	14.1	14.0	14.5	14.3	14.3	14.3
Building finishing contractors	14.2	14.2	14.3	15.3	12.6	12.8	12.9	12.8	12.9	13.2	13.5	13.1	13.4	13.4
Manufacturing	26.2	26.3	25.9	25.6	24.6	24.4	24.9	25.8	24.6	25.0	24.9	25.4	25.4	25.2
Durable goods	14.8	14.7	14.5	14.3	13.5	13.3	13.8	14.6	13.5	13.7	13.9	14.0	14.0	14.0
Other miscellaneous durable goods manufacturing	4.1	4.1	4.1	4.0	3.9	4.0	4.1	4.1	4.1	4.1	4.0	4.1	4.2	4.1
Nondurable goods	11.4	11.6	11.4	11.3	11.1	11.1	11.1	11.2	11.1	11.3	11.0	11.4	11.4	11.2
Service-providing	945.4	933.2	934.5	917.2	697.5	718.0	794.3	802.8	814.0	827.4	839.6	848.2	852.8	831.6
Private service-providing	835.0	827.3	824.9	806.8	594.3	614.7	691.6	700.2	710.2	722.5	734.7	743.0	746.8	726.4
Trade, transportation, and utilities	190.5	182.7	181.1	177.5	147.8	149.7	160.6	162.0	167.6	171.2	175.8	185.4	188.9	170.9
Wholesale Trade	24.9	24.6	24.7	24.7	19.9	21.2	21.4	21.2	20.6	21.8	21.7	22.6	22.6	22.2
Retail trade	112.4	107.2	105.8	102.0	84.7	84.0	94.1	96.0	101.4	101.2	104.1	110.4	112.1	100.2
Food and beverage stores	18.7	18.4	18.5	18.3	17.7	17.8	18.5	18.6	18.7	18.8	18.9	19.4	19.3	18.6
Health and personal care stores	7.8	7.5	7.5	7.5	6.6	6.6	6.6	6.6	6.7	6.7	6.8	7.0	7.1	6.9
Transportation, Warehousing, and Utilities	53.2	50.9	50.6	50.8	43.2	44.5	45.1	44.8	45.6	48.2	50.0	52.4	54.2	48.4
Utilities	2.6	2.7	2.6	2.7	2.6	2.6	2.6	2.6	2.6	2.6	2.6	2.6	2.6	2.6
Transportation and Warehousing	50.6	48.2	48.0	48.1	40.6	41.9	42.5	42.2	43.0	45.6	47.4	49.8	51.6	45.7
Transit and ground passenger transportation	9.5	9.8	9.7	9.7	6.1	6.1	6.1	6.0	5.9	5.9	6.1	6.1	6.1	7.0
Taxi and limousine service	5.6	5.8	5.7	5.6	3.4	3.3	3.3	3.2	3.2	3.2	3.3	3.3	3.2	3.9
Information	11.4	11.3	11.5	11.3	9.7	9.8	9.6	9.4	9.4	9.1	9.4	9.6	9.4	10.0
Telecommunications	3.0	3.0	3.0	3.0	2.5	2.5	2.5	2.5	2.5	2.5	2.5	2.5	2.5	2.6
Financial activities	55.2	53.8	53.4	53.4	52.1	53.4	54.0	54.1	54.9	53.2	54.0	55.5	56.2	54.0
Finance and insurance	31.4	30.9	30.4	30.7	30.0	30.2	30.5	30.5	30.9	29.8	30.1	31.3	31.6	30.6
Credit intermediation and related activities	16.8	16.5	16.4	16.4	16.2	16.3	16.5	16.7	17.0	16.3	16.6	17.0	17.1	16.6
Real estate and rental and leasing	23.8	22.9	23.0	22.7	22.1	23.2	23.5	23.6	24.0	23.4	23.9	24.2	24.6	23.4
Professional and business services	149.9	153.5	150.4	150.3	117.0	115.4	123.7	126.8	128.5	131.5	133.0	132.7	132.1	132.9
Professional and technical services	45.6	45.2	45.2	45.2	43.3	41.3	41.7	43.1	41.9	42.4	43.3	42.8	44.1	43.3
Management of companies and enterprises	22.5	21.9	21.7	22.2	13.6	12.6	13.5	14.2	14.2	15.7	15.9	16.2	16.5	16.5
Administrative and waste services	81.8	86.4	83.5	82.9	60.1	61.5	68.5	69.5	72.4	73.4	73.8	73.7	71.5	73.1
Administrative and support services	78.7	83.8	80.7	80.1	57.6	59.0	65.9	66.8	69.8	70.7	71.1	71.0	68.7	70.4
Employment services	16.3	16.5	16.1	15.7	7.4	7.8	9.8	9.9	10.5	9.6	10.2	11.4	11.4	11.4
Other support services	10.4	15.0	13.1	12.6	11.6	12.5	13.1	12.2	12.7	12.9	13.9	13.1	12.4	12.9
Education and health services	105.7	105.5	106.2	103.7	90.7	90.0	94.9	96.0	100.0	102.9	103.1	101.8	104.5	99.9
Health care and social assistance	94.9	94.7	95.7	94.1	81.4	81.3	86.4	87.7	89.3	92.6	91.8	90.2	93.9	89.9
Ambulatory health care services	44.0	43.7	44.4	43.7	33.7	34.4	39.3	39.9	41.3	43.8	43.4	42.3	43.5	41.1
Hospitals	23.5	23.5	23.6	23.7	23.7	23.8	23.9	24.0	24.1	24.0	24.4	24.5	24.6	24.0
Leisure and hospitality	290.7	288.9	290.5	278.6	154.3	171.6	221.7	224.9	222.1	226.6	231.3	230.0	228.4	230.7
Arts, entertainment, and recreation	23.7	23.4	23.6	21.9	16.5	20.7	22.8	20.5	20.3	20.1	20.0	20.0	20.1	20.8
Amusements, gambling, and recreation	16.5	16.3	16.4	15.6	13.0	14.5	16.4	14.5	14.6	15.0	14.8	14.7	15.0	15.1
Accommodation and food services	267.0	265.5	266.9	256.7	137.8	150.9	198.9	204.4	201.8	206.5	211.3	210.0	208.3	209.9
Accommodation	160.6	159.6	159.7	155.8	96.9	97.5	123.7	125.1	123.7	125.7	125.0	123.1	123.0	128.2
Casino hotels	146.6	145.8	145.8	142.0	94.6	94.1	116.8	118.0	117.0	118.9	118.1	115.8	114.7	120.1
Food services and drinking places	106.4	105.9	107.2	100.9	40.9	53.4	75.2	79.3	78.1	80.8	86.3	86.9	85.3	81.7
Restaurants and other eating places	94.9	93.7	94.7	90.7	39.3	52.3	72.8	77.9	76.7	78.6	81.5	81.5	79.8	76.6
Full-service restaurants	52.8	52.6	52.9	49.5	14.6	24.2	40.5	44.5	42.7	44.0	46.1	46.0	45.6	41.9
Limited-service eating places	42.1	41.1	41.8	41.2	24.7	28.1	32.3	33.4	34.0	34.6	35.4	35.5	34.2	34.7
Other services	31.6	31.6	31.8	32.0	22.7	24.8	27.1	27.0	27.7	28.0	28.1	28.0	27.3	28.0
Government	110.4	105.9	109.6	110.4	103.2	103.3	102.7	102.6	103.8	104.9	104.9	105.2	106.0	105.2
Federal	13.8	13.8	13.7	13.7	13.8	13.9	13.9	14.1	16.0	15.3	14.7	14.3	14.4	14.3
State government	21.2	18.6	21.0	21.0	20.7	20.4	18.6	18.3	18.1	18.2	18.2	18.2	18.0	19.1
Local government	75.4	73.5	74.9	75.7	68.7	69.0	70.2	70.2	69.7	71.4	72.0	72.7	73.6	71.8

UNEMPLOYMENT RATES BASED ON UNROUNDED DATA
Employment adjusted by census relationships to reflect number of persons by place of residence.
Information compiled by DETR's Research & Analysis Bureau

Non-Seasonally Adjusted CES Sectors: Reno

Series	December 2020	+/- November 2020	Monthly Rate	+/- December 2019	Yearly Rate	Maximum	Percent of Total
Total nonfarm	244,000	3,600	1.5%	-9,200	-3.6%	254,000	100.0%
Total private	214,600	3,500	1.7%	-6,800	-3.1%	222,300	88.0%
Goods-producing	44,500	500	1.1%	900	2.1%	44,800	18.2%
Mining and logging	300	0	0.0%	0	0.0%	1,400	0.1%
Construction	17,900	100	0.6%	100	0.6%	25,500	7.3%
Manufacturing	26,300	400	1.5%	800	3.1%	26,300	10.8%
Miscellaneous durable goods manufacturing	2,200	100	4.8%	0	0.0%	3,700	0.9%
Service-providing	199,500	3,100	1.6%	-10,100	-4.8%	210,200	81.8%
Private service-providing	170,100	3,000	1.8%	-7,700	-4.3%	178,500	69.7%
Trade, transportation, and utilities	55,500	2,900	5.5%	-1,500	-2.6%	57,000	22.7%
Wholesale Trade	9,800	0	0.0%	-100	-1.0%	11,600	4.0%
Retail trade	26,400	1,200	4.8%	0	0.0%	26,400	10.8%
Food and beverage stores	3,900	0	0.0%	0	0.0%	3,900	1.6%
Transportation, Warehousing, and Utilities	19,300	1,700	9.7%	-1,400	-6.8%	20,700	7.9%
Information	3,000	0	0.0%	-100	-3.2%	3,800	1.2%
Financial activities	11,000	-100	-0.9%	0	0.0%	11,100	4.5%
Finance and insurance	6,100	-100	-1.6%	0	0.0%	6,800	2.5%
Professional and business services	35,500	200	0.6%	1,400	4.1%	35,500	14.5%
Administrative and waste services	17,200	0	0.0%	-500	-2.8%	19,200	7.0%
Education and health services	27,500	600	2.2%	-400	-1.4%	28,300	11.3%
Leisure and hospitality	31,800	-700	-2.2%	-6,600	-17.2%	44,500	13.0%
Accommodation and food services	26,100	-700	-2.6%	-6,300	-19.4%	37,900	10.7%
Accommodation	11,600	-500	-4.1%	-3,400	-22.7%	28,900	4.8%
Casino hotels	10,100	-600	-5.6%	-3,500	-25.7%	27,800	4.1%
Food services and drinking places	14,500	-200	-1.4%	-2,900	-16.7%	17,700	5.9%
Other services	5,800	100	1.8%	-500	-7.9%	7,400	2.4%
Government	29,400	100	0.3%	-2,400	-7.5%	31,800	12.0%
Federal	4,000	0	0.0%	200	5.3%	4,400	1.6%
State government	10,200	-100	-1.0%	-1,400	-12.1%	12,000	4.2%
Local government	15,200	200	1.3%	-1,200	-7.3%	17,600	6.2%

Reno MSA Non-Seasonally Adjusted CES Last 13 Months (Estimates in Thousands)

	Dec-19	Jan-20	Feb-20	Mar-20	Apr-20	May-20	Jun-20	Jul-20	Aug-20	Sep-20	Oct-20	Nov-20	Dec-20	12m Avg.
Total nonfarm	253.2	245.8	248.1	247.4	212.1	219.2	229.7	230.3	233.6	235.7	237.8	240.4	244.0	235.3
Total private	221.4	216.2	216.5	215.7	182.2	189.4	202.0	203.3	205.8	205.8	208.5	211.1	214.6	205.9
Goods-producing	43.6	42.6	42.9	43.7	43.2	44.7	44.4	44.2	44.5	44.0	44.1	44.0	44.5	43.9
Mining and logging	0.3	0.3	0.3	0.3	0.3	0.3	0.3	0.3	0.3	0.3	0.3	0.3	0.3	0.3
Construction	17.8	16.9	17.1	17.8	17.5	18.6	18.7	18.3	18.5	18.5	18.3	17.8	17.9	18.0
Manufacturing	25.5	25.4	25.5	25.6	25.4	25.8	25.4	25.6	25.7	25.2	25.5	25.9	26.3	25.6
Miscellaneous durable goods manufacturing	2.2	2.2	2.2	2.2	2.2	2.1	2.1	2.1	2.2	2.1	2.1	2.1	2.2	2.1
Service-providing	209.6	203.2	205.2	203.7	168.9	174.5	185.3	186.1	189.1	191.7	193.7	196.4	199.5	191.4
Private service-providing	177.8	173.6	173.6	172.0	139.0	144.7	157.6	159.1	161.3	161.8	164.4	167.1	170.1	162.0
Trade, transportation, and utilities	57.0	53.9	53.7	53.5	45.3	47.8	49.2	49.3	49.7	51.3	51.9	52.6	55.5	51.1
Wholesale Trade	9.9	9.8	9.8	9.8	8.7	8.7	8.8	8.8	8.7	9.2	9.2	9.8	9.8	9.3
Retail trade	26.4	24.8	24.6	24.4	20.4	22.6	23.9	24.2	24.4	25.1	25.2	25.2	26.4	24.3
Transportation, Warehousing, and Utilities	20.7	19.3	19.3	19.3	16.2	16.5	16.5	16.3	16.6	17.0	17.5	17.6	19.3	17.6
Information	3.1	3.0	3.0	3.0	3.0	3.0	3.0	3.0	3.0	3.0	3.0	3.0	3.0	3.0
Financial activities	11.0	10.9	10.9	10.9	10.8	10.8	10.9	10.9	11.0	10.9	11.0	11.1	11.0	10.9
Finance and insurance	6.1	6.1	6.1	6.1	6.1	6.0	6.0	6.0	6.1	6.1	6.1	6.2	6.1	6.1
Professional and business services	34.1	33.8	33.2	32.1	27.3	28.5	29.5	29.9	30.4	30.9	33.2	35.3	35.5	31.6
Administrative and waste services	17.7	16.7	16.4	16.2	12.7	13.1	13.7	14.0	14.0	14.1	15.5	17.2	17.2	15.1
Education and health services	27.9	28.0	28.2	28.1	25.7	25.6	25.5	25.7	26.5	26.8	26.7	26.9	27.5	26.8
Leisure and hospitality	38.4	37.7	38.3	38.0	22.4	23.6	33.9	34.8	34.8	33.0	32.7	32.5	31.8	32.8
Accommodation and food services	32.4	32.0	32.5	32.4	19.9	21.3	27.4	28.3	28.0	26.5	26.9	26.8	26.1	27.3
Accommodation	15.0	15.0	15.0	14.9	11.8	11.7	14.1	14.3	13.9	12.3	12.1	12.1	11.6	13.2
Casino hotels	13.6	13.6	13.6	13.5	10.7	10.6	12.4	12.6	12.2	10.8	10.7	10.7	10.1	11.8
Food services and drinking places	17.4	17.0	17.5	17.5	8.1	9.6	13.3	14.0	14.1	14.2	14.8	14.7	14.5	14.1
Other services	6.3	6.3	6.3	6.4	4.5	5.4	5.6	5.5	5.9	5.9	5.9	5.7	5.8	5.8
Government	31.8	29.6	31.6	31.7	29.9	29.8	27.7	27.0	27.8	29.9	29.3	29.3	29.4	29.4
Federal	3.8	3.8	3.8	3.9	3.9	3.9	3.9	3.9	4.2	4.2	4.1	4.0	4.0	4.0
State government	11.6	9.9	11.6	11.6	11.4	11.3	10.1	10.1	10.1	10.7	10.2	10.3	10.2	10.6
Local government	16.4	15.9	16.2	16.2	14.6	14.6	13.7	13.0	13.5	15.0	15.0	15.0	15.2	14.8

UNEMPLOYMENT RATES BASED ON UNROUNDED DATA
Employment adjusted by census relationships to reflect number of persons by place of residence.
Information compiled by DETR's Research & Analysis Bureau

Non-Seasonally Adjusted CES Sectors: Carson City

Series	December 2020	+/- November 2020	Monthly Rate	+/- December 2019	Yearly Rate	Maximum	Percent of Total
Total nonfarm	28,900	200	0.7%	-2,000	-6.5%	33,600	100.0%
Total private	19,400	100	0.5%	-2,000	-9.3%	23,100	67.1%
Goods-producing	4,200	0	0.0%	0	0.0%	5,800	14.5%
Manufacturing	2,600	-100	-3.7%	-100	-3.7%	4,200	9.0%
Service-providing	24,700	200	0.8%	-2,000	-7.5%	28,300	85.5%
Private service-providing	15,200	100	0.7%	-2,000	-11.6%	17,700	52.6%
Trade, transportation, and utilities	4,300	100	2.4%	-100	-2.3%	5,300	14.9%
Retail trade	3,300	100	3.1%	-100	-2.9%	4,300	11.4%
Professional and business services	2,100	100	5.0%	-200	-8.7%	2,600	7.3%
Leisure and hospitality	4,200	0	0.0%	500	13.5%	4,500	14.5%
Government	9,500	100	1.1%	0	0.0%	10,900	32.9%
Federal	600	0	0.0%	100	20.0%	900	2.1%
State government	7,000	0	0.0%	0	0.0%	8,200	24.2%
Local government	1,900	100	5.6%	-100	-5.0%	2,800	6.6%

Carson City MSA Non-Seasonally Adjusted CES Last 13 Months (Estimates in Thousands)

	Dec-19	Jan-20	Feb-20	Mar-20	Apr-20	May-20	Jun-20	Jul-20	Aug-20	Sep-20	Oct-20	Nov-20	Dec-20	12m Avg.
Total nonfarm	30.9	30.6	30.7	30.6	27.0	27.6	28.5	29.4	29.9	30.1	29.8	28.7	28.9	29.3
Total private	21.4	21.2	21.3	21.1	17.6	18.1	18.9	19.8	20.4	20.5	20.5	19.3	19.4	19.8
Goods-producing	4.2	4.2	4.2	4.2	3.8	4.0	4.2	4.2	4.2	4.2	4.2	4.2	4.2	4.2
Manufacturing	2.7	2.6	2.6	2.7	2.5	2.5	2.6	2.7	2.7	2.7	2.7	2.7	2.6	2.6
Service-providing	26.7	26.4	26.5	26.4	23.2	23.6	24.3	25.2	25.7	25.9	25.6	24.5	24.7	25.2
Private service-providing	17.2	17.0	17.1	16.9	13.8	14.1	14.7	15.6	16.2	16.3	16.3	15.1	15.2	15.7
Trade, transportation, and utilities	4.4	4.2	4.2	4.1	3.6	3.7	3.7	3.7	3.9	4.0	4.1	4.2	4.3	4.0
Retail trade	3.4	3.3	3.3	3.2	2.7	2.7	2.9	2.9	3.0	3.1	3.1	3.2	3.3	3.1
Professional and business services	2.3	2.2	2.2	2.2	1.8	1.8	1.8	1.9	1.9	1.9	2.0	2.0	2.1	2.0
Leisure and hospitality	3.7	3.6	3.6	3.5	2.9	3.1	4.2	4.3	4.3	4.3	4.3	4.2	4.2	3.9
Government	9.5	9.4	9.4	9.5	9.4	9.5	9.6	9.6	9.5	9.6	9.3	9.4	9.5	9.5
Federal	0.5	0.5	0.5	0.5	0.6	0.6	0.6	0.6	0.7	0.7	0.6	0.6	0.6	0.6
State government	7.0	6.9	6.9	7.0	7.0	7.1	7.1	7.0	7.0	7.0	6.9	7.0	7.0	7.0
Local government	2.0	2.0	2.0	2.0	1.8	1.8	1.9	2.0	1.8	1.9	1.8	1.8	1.9	1.9

UNEMPLOYMENT RATES BASED ON UNROUNDED DATA
Employment adjusted by census relationships to reflect number of persons by place of residence.
Information compiled by DETR's Research & Analysis Bureau

End Notes

Prepared by the Research and Analysis Bureau with contributions from: Alex Capello, Jason Gortari, Jeremy Hays, Michael La Rue, Dionny McDonnell, Christopher Robison, Dave Schmidt, Marianne Segurson, and Tim Wilcox.

Special thanks to all the R and RStudio developers that built the packages to make this possible. Packages used in this report include tidyverse, viridis, ggthemes, scales, data.table, RcppRoll, plotly, patchwork, reshape2, knitr, ggforce, DT, and gt.

This workforce product was funded by a grant awarded by the U.S. Department of Labor's Employment and Training Administration. The product was created by the recipient and does not necessarily reflect the official position of the U.S. Department of Labor. The U.S. Department of Labor makes no guarantees, warranties, or assurances of any kind, express or implied, with respect to such information, including any information on linked sites and including, but not limited to, accuracy of the information or its completeness, timeliness, usefulness, adequacy, continued availability, or ownership. This product is copyrighted by the institution that created it. Internal use by an organization and/or personal use by an individual for non-commercial purposes is permissible. All other uses require the prior authorization of the copyright owner.