

MEDIA CONTACT
Rosa Mendez
rcmendez@detr.nv.gov

PRESS RELEASE



ONE NEVADA - Growing a Skilled, Diverse Workforce
RESEARCH AND ANALYSIS BUREAU

STEVE SISOLAK
Governor

ELISA CAFFERATA
Director

DAVID SCHMIDT
Chief Economist

SUB-STATE PRESS RELEASE

For Immediate Release
December 23, 2020

Employment varied as Las Vegas and Reno regain jobs while Carson remains flat; unemployment declines across much of the state

CARSON CITY, NV - The Silver State added back 9,200 jobs (0.7%) since October 2020 for a current employment total of 1,317,800, according to the Department of Employment, Training and Rehabilitation's (DETR) November 2020 economic report. When compared to November 2019, jobs are still down by 109,500 (-7.7%). Nevada's seasonally adjusted unemployment rate was 10.1 percent in November 2020 compared to 11.9 percent in October. Area total employment estimates are seasonally adjusted to account for regularly seen economic trends, but estimates discussing sector employment and sub-state unemployment rates are not adjusted for seasonality.

The Las Vegas Metropolitan Statistical Area (MSA) increased by 7,800 jobs (0.8%) since October 2020. Job losses in construction and leisure & hospitality offset the growth in the trade, transportation, and utilities sector which added 10,600 jobs (6.0%). Compared to November 2019, total employment declined by 107,100 jobs (-10.3%) with leisure and hospitality sector down the most by 62,400 jobs (-21.4%). The unemployment rate for the area was 11.5 percent and is still the highest in the state.

The Reno MSA had an increase of 1,600 jobs (0.7%) since October 2020 with the professional and business services sector growing the most by 2,300 jobs (6.9%). Compared to November 2019, total employment saw a decrease of 12,600 jobs (-5.0%) with leisure and hospitality sector down the most by 6,100 jobs (-15.9%). The unemployment rate in Reno is 5.4 percent compared to 2.7 percent last year.

The Carson City MSA remained unchanged at 29,500 jobs since October 2020 with the trade, transportation, and utilities sector growing the most by 100 jobs (2.4%). Compared to November 2019, total employment saw a decrease of 1,500 jobs (-4.8%) with government sector down the most by 300 jobs (-3.1%). The Carson MSA has an unemployment rate of 5.8 percent in November 2020.

"Employment gains were mixed in November with the Las Vegas and Reno MSAs showing growth while the Carson City MSA remains mostly flat when accounting for seasonal patterns. Unemployment levels continued to decline across the state resulting in improvements in the unemployment rate in nearly all areas. Although the labor market continues to improve, Nevada remains one of the states most impacted by the COVID pandemic, with our economic outlook dependent on the response to COVID19 including treatments, policy responses, and public compliance with measures to slow the spread of the disease," said David Schmidt, Chief Economist for DETR.

Additional Economic Report Highlights:

Employment (Seasonally Adjusted):

- Las Vegas employment increased by 7,800 jobs (0.8%) since October 2020 and a decrease of 107,100 jobs (-10.3%) since November 2019.
- Reno employment had an increase of 1,600 jobs (0.7%) since October 2020 and a decrease of 12,600 jobs (-5.0%) since November 2019.
- Carson City employment had an increase of 0 jobs (0.0%) since October 2020 and a decrease of 1,500 jobs (-4.8%) since November 2019.

Unemployment (Not Seasonally Adjusted):

- Las Vegas MSA's unemployment was 11.5% in November 2020 compared to October 2020's rate of 13.7% and 3.6% in November 2019.
- Reno MSA's unemployment was 5.4% in November 2020 compared to October 2020's rate of 6.3% and 2.7% in November 2019.
- Carson City MSA's unemployment was 5.8% in November 2020 compared to October 2020's rate of 6.6% and 3.3% in November 2019.
- The unemployment rate in the Elko Micropolitan area was 3.8% in November 2020 compared to October 2020's rate of 4.2% and 2.6% in November 2019.
- The Fallon area's unemployment was 4.1% in November 2020 compared to October 2020's rate of 4.5% and 3% in November 2019.
- The unemployment rate in Lyon County was 6.4% in November 2020 compared to October 2020's rate of 7% and 4% in November 2019.
- Douglas County's unemployment rate was 5.6% in November 2020 compared to October 2020's rate of 6.6% and 3.4% in November 2019.
- The unemployment rate in Nye County was 7.6% in November 2020 compared to October 2020's rate of 8.9% and 4.4% in November 2019.
- The unemployment rate in the Winnemucca area was 3.9% in November 2020 compared to October 2020's rate of 4.3% and 2.7% in November 2019.

For the latest information on the Nevada economy check out our monthly [Labor Market Overview](#), or for the latest on your local area take a look at our monthly [Sub-State Labor Market Overview](#). To learn more about how to use the Bureau's data search tool check out our [instructions page](#).

Additional charts and visualizations on employment estimates and a full breakout of employment by industry can be found at our Current Employment Statistics page ([CES Page](#)) or for a summary of employment check out our [CES summary dashboard](#).

Additional information on unemployment estimates along with a complete breakout of unemployment in counties, cities, and other areas in Nevada can be found by visiting our Local Area Unemployment Statistics page ([LAUS Page](#)).

—###—

ABOUT THE RESEARCH AND ANALYSIS BUREAU:

The [Research and Analysis Bureau](#) is Nevada's premier source for labor market information. A part of DETR, the Bureau is responsible for creating, analyzing, and reporting Nevada's labor market information, in cooperation with the United States Bureau of Labor Statistics (BLS).

Visit our [website](#) or Follow us on [Twitter](#)

DAVID SCHMIDT
Chief Economist



STEVE SISOLAK
Governor

Elisa Cafferata
Director

Nevada Sub-State Labor Market Overview

November 2020

Published on December 22, 2020

In this release, we provide updates on our primary employment, unemployment, and unemployment insurance programs. November saw continued growth in employment for the seventh month in a row. Carson City was the only MSA this month that experienced a decline in employment, dropping by 200 jobs since October or remaining unchanged when accounting for seasonal trends. Although improving, employment levels are still recovering from their pre pandemic levels. When compared to last year, the Reno MSA is down 5 percent, Carson City MSA is down 4.8 percent, and Las Vegas MSA is down 10.3 percent. The Reno and Carson MSAs fared better than the 6.2 percent decline for the US when looking at seasonally adjusted data.

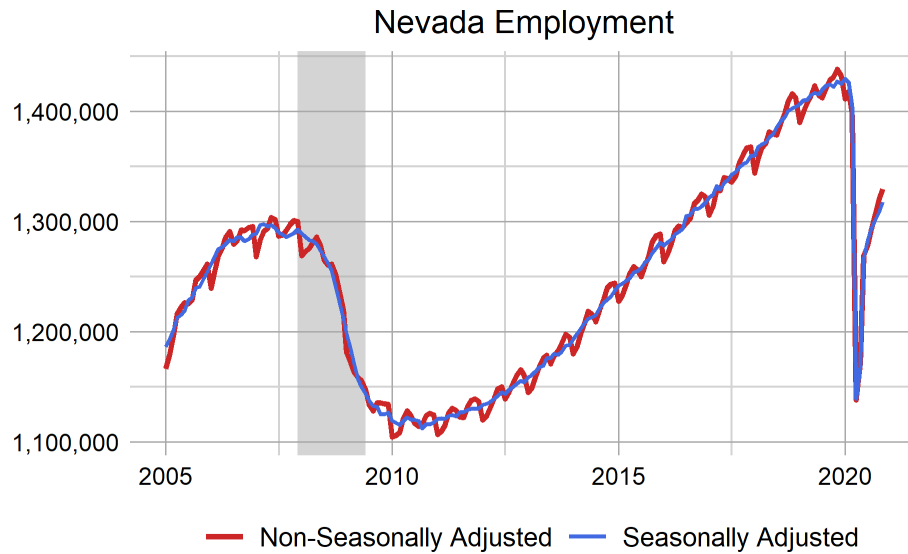
Unemployment rates in the Nevada showed improvement in all areas except for Eureka County which increased to 2.9 percent in November 2020. Despite this increase, the area has the lowest unemployment rate in the state. The city of North Las Vegas had the highest reported unemployment rate in Nevada at 12.5 percent. When compared to November 2019 all areas in the state have higher unemployment rates.

Nevada Economic Summary				
	Annual Employment Change		Unemployment Rates	
	Unadjusted	Adjusted	Unadjusted	Adjusted
U.S.	-5.8%	-6.2%	6.4	6.7
Nevada	-7.6%	-7.7%	11.8	10.1
Carson City MSA	-5.1%	-4.8%	5.8	**
Las Vegas - Paradise MSA	-10.1%	-10.3%	11.5	**
Reno - Sparks MSA	-5.2%	-5.0%	5.4	**

Seasonally adjusted estimates account for regularly seen seasonal employment patterns. Things like holiday hiring, beach season, ski season, or other jobs with seasonal components. The result of a seasonally adjusted estimate is usually a smoother estimate from which underlying economic trends can be seen. Adjusted estimates are in the summary table above, and in many of the other tables and figures through this document.

Current Employment Statistics ([CES](#))

Estimates for this section come from the Current Employment Statistics (CES) program, a state/federal partnership sponsored by the Bureau of Labor statistics ([BLS-CES](#)).



[United States Economic Summary](#) | [Nevada Economic Summary](#)

Las Vegas MSA seasonally adjusted total nonfarm employment realized an increase of 7,800 jobs (0.8%) from October 2020 to November 2020. Compared to November 2019 total nonfarm employment saw a decrease of 107,100 jobs (-10.3%). The sectors with the largest employment growth are Mining and logging (20.0%) and Financial activities (1.1%). Sector estimates are not adjusted for seasonality.

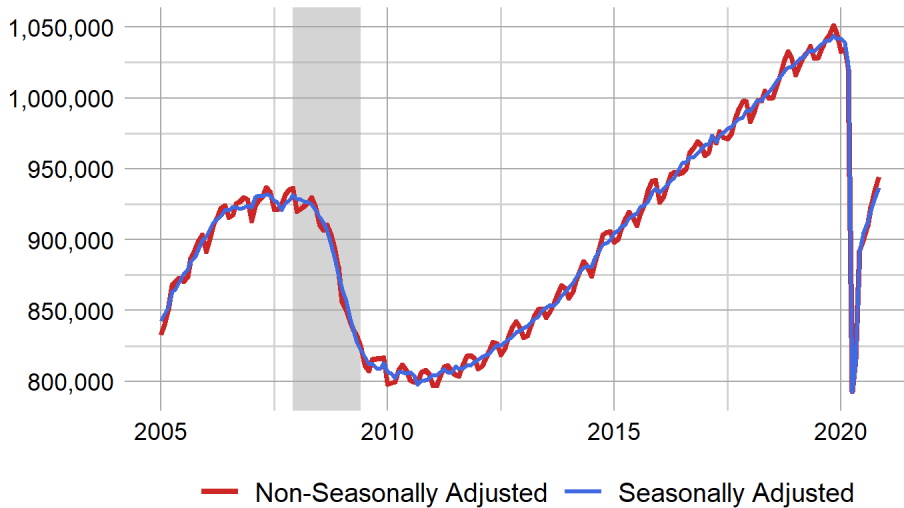
Reno seasonally MSA adjusted total nonfarm employment realized an increase of 1,600 jobs (0.7%) from October 2020 to November 2020. Compared to November 2019 total nonfarm employment saw a decrease of 12,600 jobs (-5.0%). The three sectors with the largest employment growth are Manufacturing (3.2%), Financial activities (1.8%), and Professional and business services (0.6%). Sector estimates are not adjusted for seasonality.

Carson City MSA seasonally adjusted total nonfarm employment realized an increase of 0 jobs (0.0%) from October 2020 to November 2020. Compared to November 2019 total nonfarm employment saw a decrease of 1,500 jobs (-4.8%). The sector with the largest employment growth was Leisure and hospitality (13.5%). Sector estimates are not adjusted for seasonality.

Non-Seasonally Adjusted Current Employment Statistics				
Area	November 2020	Monthly Change	Yearly Change	Annual Growth Rate
U.S.	144,005,000	517,000	-8,924,000	-5.8%
Nevada	1,329,500	9,000	-108,600	-7.6%
Carson City MSA	29,600	-200	-1,600	-5.1%
Las Vegas - Paradise MSA	944,400	9,200	-106,500	-10.1%
Reno - Sparks MSA	240,800	3,000	-13,200	-5.2%

Seasonally Adjusted Current Employment Statistics				
Area	November 2020	Monthly Change	Yearly Change	Annual Growth Rate
U.S.	142,629,000	245,000	-9,369,000	-6.2%
Nevada	1,317,800	9,200	-109,500	-7.7%
Carson City MSA	29,500	0	-1,500	-4.8%
Las Vegas - Paradise MSA	936,900	7,800	-107,100	-10.3%
Reno - Sparks MSA	237,000	1,600	-12,600	-5.0%

Las Vegas Employment



Las Vegas Employment

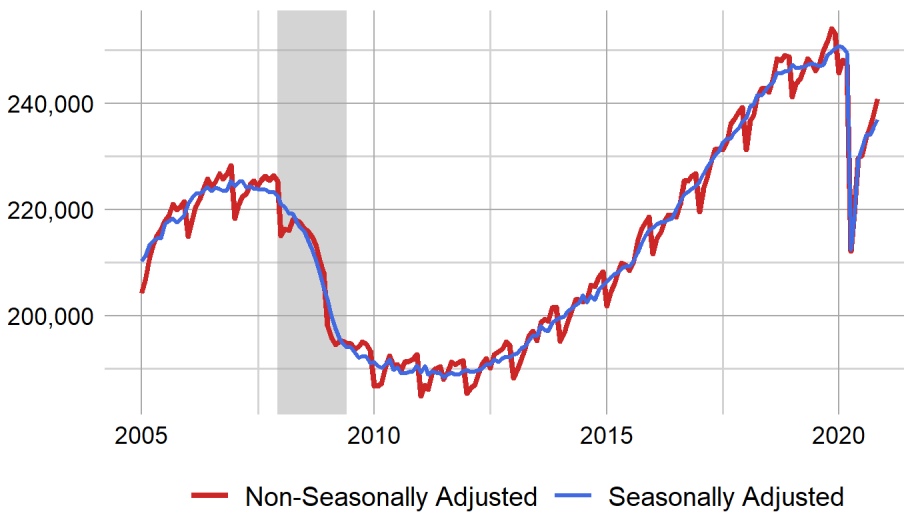
	Unadjusted	Adjusted
Current	944,400	936,900
Monthly Change	9,200	7,800
Annual Change	-106,500	-107,100
Annual Growth Rate	-10.1%	-10.3%
Maximum	1,050,900	1,044,000

Sector Summary

Unadjusted	Goods-Producing	Service-Providing
Current	94,600	849,800
Monthly Change	-1,000	10,200
Annual Change	-5,600	-100,900
Annual Growth Rate	-5.6%	-10.6%
Maximum	139,900	950,700

[Las Vegas MSA Summary](#)

Reno Employment



Reno Employment

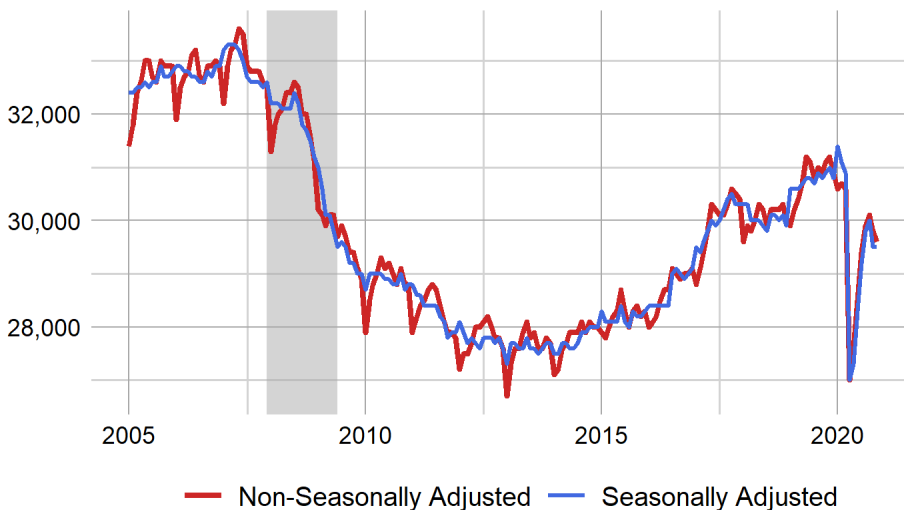
	Unadjusted	Adjusted
Current	240,800	237,000
Monthly Change	3,000	1,600
Annual Change	-13,200	-12,600
Annual Growth Rate	-5.2%	-5.0%
Maximum	254,000	250,800

Sector Summary

Unadjusted	Goods-Producing	Service-Providing
Current	44,100	196,700
Monthly Change	0	3,000
Annual Change	300	-13,500
Annual Growth Rate	0.7%	-6.4%
Maximum	44,800	210,200

[Reno MSA Summary](#)

Carson City Employment



Carson City Employment

	Unadjusted	Adjusted
Current	29,600	29,500
Monthly Change	-200	0
Annual Change	-1,600	-1,500
Annual Growth Rate	-5.1%	-4.8%
Maximum	33,600	33,300

Sector Summary

Unadjusted	Goods-Producing	Service-Providing
Current	4,200	25,400
Monthly Change	0	-200
Annual Change	-100	-1,500
Annual Growth Rate	-2.3%	-5.6%
Maximum	5,800	28,300

[Carson City MSA Summary](#)

For more information visit our [CES Page](#), see the summary tables at the end of the document, or check out our dashboards for a [CES summary](#) or [industry](#) estimates.

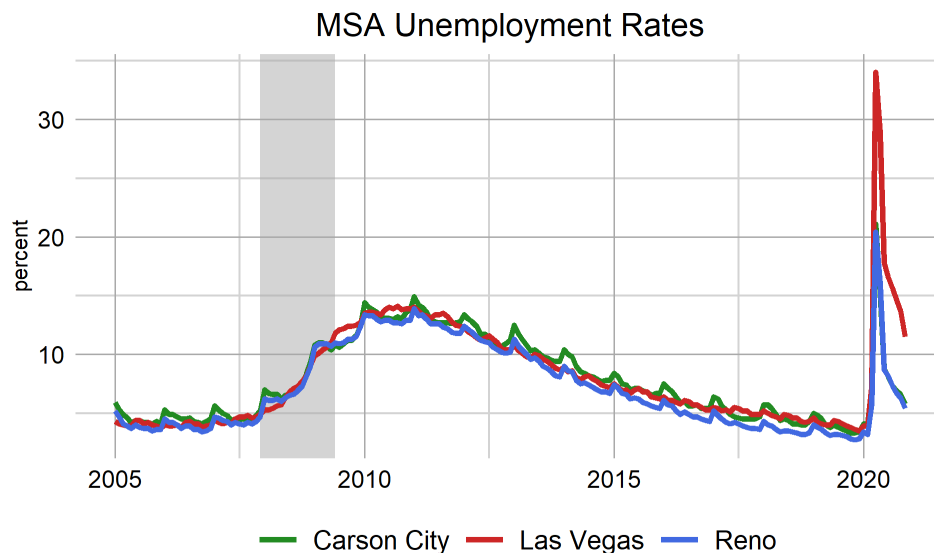
Local Area Unemployment Statistics ([LAUS](#))

Figures for our unemployment estimates come from the Local Area Unemployment Statistics (LAUS) program, a state/federal partnership sponsored by the Bureau of Labor Statistics ([BLS-LAUS](#)). This program produces monthly and annual employment, unemployment, and labor force data for census regions, states, counties, metropolitan areas, and many large cities, based on place of residence.

The Las Vegas MSA's unemployment rate was 11.5 percent in November 2020, decreasing from 13.7 percent in October 2020, and up from 3.6 percent in November 2019, non-seasonally adjusted. The number of unemployed individuals decreased by 28,238 since October 2020 for a current level of 127,969 people, which is 87,192 more unemployed people than November 2019. The labor force in Las Vegas is currently 1,111,714 people, which is 27,159 less people than October 2020, and is down 27,797 people since November 2019.

The Reno MSA's unemployment rate was 5.4 percent in November 2020, decreasing from 6.3 percent in October 2020, and up from 2.7 percent in November 2019, non-seasonally adjusted. The number of unemployed individuals decreased by 2,381 since October 2020 for a current level of 13,737 people, which is 6,629 more unemployed people than November 2019. The labor force in Reno is currently 253,539 people, which is 1,880 less people than October 2020, and is down 8,623 people since November 2019.

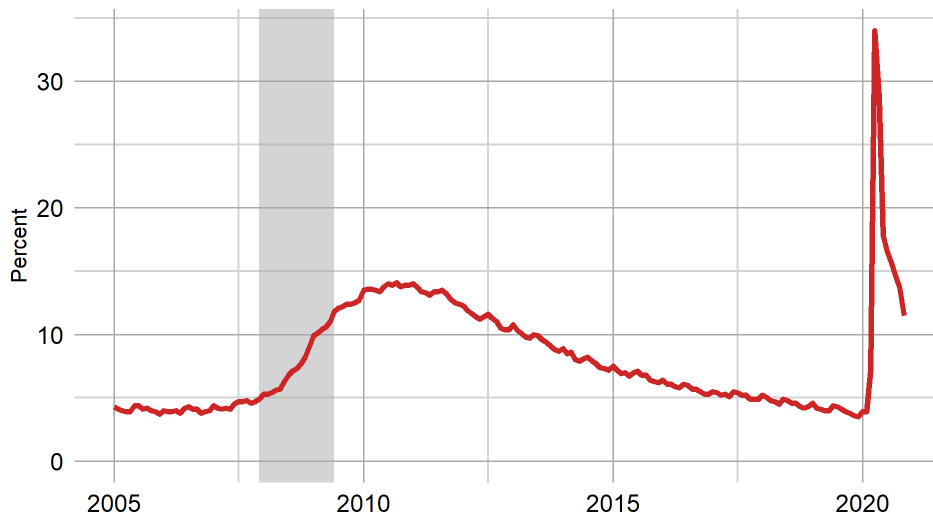
The Carson City MSA's unemployment rate was 5.8 percent in November 2020, decreasing from 6.6 percent in October 2020, and up from 3.3 percent in November 2019, non-seasonally adjusted. The number of unemployed individuals decreased by 242 since October 2020 for a current level of 1,499 people, which is 628 more unemployed people than November 2019. The labor force in Carson City is currently 25,636 people, which is 680 less people than October 2020, and is down 678 people since November 2019.



Due to the magnitude of labor force changes during the COVID-19 pandemic, the BLS has temporarily modified the methodology used for sub-state estimation. These changes impact all small county (areas not part of an MSA) LAUS employment estimates and tie their growth rate to the changes seen statewide (excluding Clark county). Unemployment estimates are unaffected by this change in methodology.

The cities of Boulder City, Elko, Fernley, and Mesquite are state specific areas. These estimates are not endorsed or published by the BLS.

Las Vegas Unemployment Rate



Las Vegas LAUS Summary

Unemployment Rate

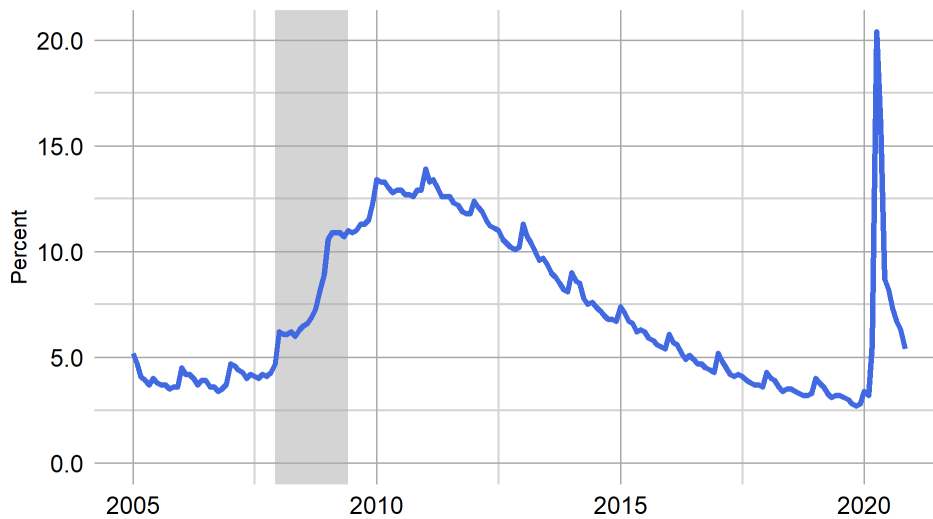
Unemployment Rate	11.5
Previous Month	13.7
Previous Year	3.6
Maximum Rate	34

Unemployed Individuals

Unemployment Level	127,969
Monthly Change	28,238
Annual Change	87,192
Maximum Level	359,352

[Las Vegas MSA Summary](#)

Reno Unemployment Rate



Reno LAUS Summary

Unemployment Rate

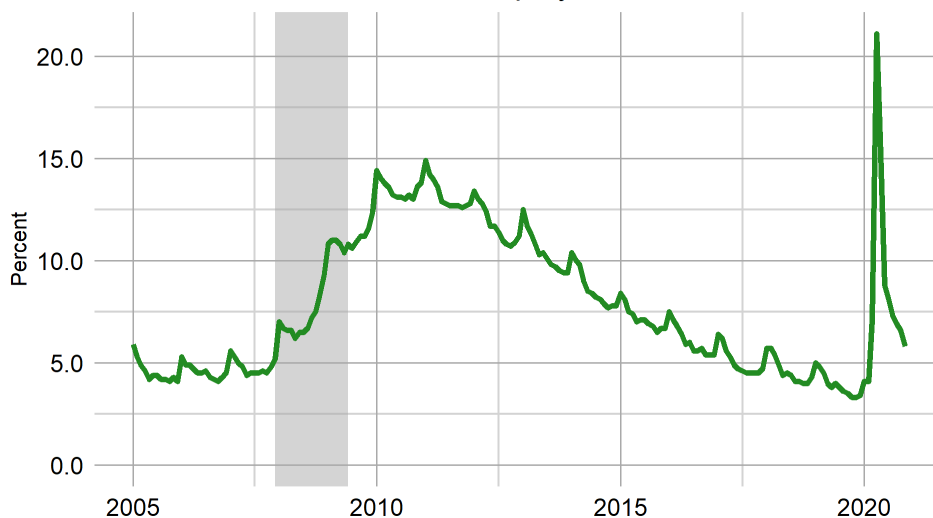
Unemployment Rate	5.4
Previous Month	6.3
Previous Year	2.7
Maximum Rate	20.4

Unemployed Individuals

Unemployment Level	13,737
Monthly Change	2,381
Annual Change	6,629
Maximum Level	45,669

[Reno MSA Summary](#)

Carson Unemployment Rate



Carson City LAUS Summary

Unemployment Rate

Unemployment Rate	5.8
Previous Month	6.6
Previous Year	3.3
Maximum Rate	21.1

Unemployed Individuals

Unemployment Level	1,499
Monthly Change	242
Annual Change	628
Maximum Level	4,982

[Carson City MSA Summary](#)

Unadjusted Local Area Unemployment Statistics

	Labor Force	Employed	Unemployed	Unemployment Rate
Nevada	1,548,358	1,365,864	182,494	11.8
Metropolitan Statistical Areas				
Reno - Sparks MSA	253,539	239,802	13,737	5.4
Carson City MSA	25,636	24,137	1,499	5.8
Las Vegas - Paradise MSA	1,111,714	983,745	127,969	11.5
Combined Statistical Areas				
Reno-Carson City-Fernley, Nv Combined Statistical Area	324,837	306,870	17,967	5.5
Counties				
Eureka County	972	944	28	2.9
White Pine County	4,490	4,346	144	3.2
Pershing County	2,372	2,285	87	3.7
Elko County	26,071	25,079	992	3.8
Humboldt County	7,846	7,539	307	3.9
Lander County	3,114	2,992	122	3.9
Churchill County	10,815	10,367	448	4.1
Mineral County	1,968	1,882	86	4.4
Lincoln County	2,006	1,915	91	4.5
Esmeralda County	429	407	22	5.1
Washoe County	251,524	237,909	13,615	5.4
Douglas County	22,943	21,659	1,284	5.6
Carson City	25,636	24,137	1,499	5.8
Storey County	2,015	1,893	122	6.1
Lyon County	22,719	21,272	1,447	6.4
Nye County	17,500	16,171	1,329	7.6
Clark County	1,111,714	983,745	127,969	11.5
Micropolitan Statistical Areas				
Elko Micropolitan Area	27,043	26,023	1,020	3.8
Winnemucca Micropolitan Area	7,846	7,539	307	3.9
Fallon Micropolitan Area	10,815	10,367	448	4.1
Gardnerville Micropolitan Area	22,943	21,659	1,284	5.6
Fernley Micropolitan Area	22,719	21,272	1,447	6.4
Pahrump Micropolitan Area	17,500	16,171	1,329	7.6
Cities				
Elko	10,198	9,791	407	4.0
Sparks	56,426	53,395	3,031	5.4
Reno	135,801	128,314	7,487	5.5
Mesquite	7,384	6,948	436	5.9
Fernley City	8,484	7,902	582	6.9
Boulder City	7,131	6,586	545	7.6
Henderson	157,950	142,416	15,534	9.8
Las Vegas	308,761	273,612	35,149	11.4
North Las Vegas	113,928	99,680	14,248	12.5

Visit our [LAUS page](#) for more information, see the summary tables for industry summaries by area, or check out our [dashboard](#) for a look at each area.

Unemployment Insurance Benefits (UI)

Regular initial claims for unemployment insurance totaled 32,613 statewide in November 2020, down almost 14 percent from a month ago. At the county level, changes in initial claims from a month ago were mixed, with half of Nevada's counties seeing increases in the weekly average of initial claims. Continued claims, which are a proxy for the number of persons filing for regular UI benefits in each week, saw declines in the average number of claims filed in every county compared to October. This was especially the case in Clark County where there 38,400 fewer claims. These declines were largely expected as the unemployment insurance program sees large groups of claimants transition to the benefit extension programs.

With regular program continued claim filings declining across all counties, benefit payment levels have correspondingly declined. Clark County saw \$81.8 million in benefit payments, down \$32.9 million from October. The rest of the state, including Washoe but not including the unknown county claims, saw \$11.0 million in regular benefits, a decline of \$2.7 from a month ago. Final Payments, also known as benefit exhaustions, totaled 24,091, a decline of more than 20,000 from October. Declines in exhaustions of this magnitude are unlikely to continue as the largest cohorts of claimants have already moved to the benefit extension programs.

UI Claims Activity by County						
County	First Payments	Final Payments	Weeks Compensated	Benefit Payments	Average Weekly Benefit	
Carson City	94	142	2,373	\$793,038	\$334.14	
Churchill	24	33	527	\$179,212	\$340.10	
Clark	4,496	19,601	252,712	\$81,848,363	\$323.88	
Douglas	50	99	1,608	\$550,078	\$342.00	
Elko	47	91	1,324	\$440,791	\$333.01	
Esmeralda	1	0	40	\$17,750	\$448.62	
Eureka	2	3	26	\$10,869	\$412.06	
Humboldt	16	19	377	\$127,723	\$338.72	
Lander	7	6	176	\$60,195	\$342.70	
Lincoln	4	5	69	\$28,815	\$417.97	
Lyon	70	147	1,946	\$663,052	\$340.74	
Mineral	4	9	117	\$34,508	\$293.69	
Nye	40	132	1,828	\$576,075	\$315.07	
Pershing	6	2	97	\$33,451	\$344.44	
Storey	1	6	46	\$14,792	\$320.46	
Unknown	832	2,237	26,551	\$11,276,816	\$424.72	
Washoe	715	1,551	22,106	\$7,487,008	\$338.68	
White Pine	6	8	182	\$60,537	\$333.27	
Statewide	—	6,415	24,091	312,106	\$104,203,073.00	—

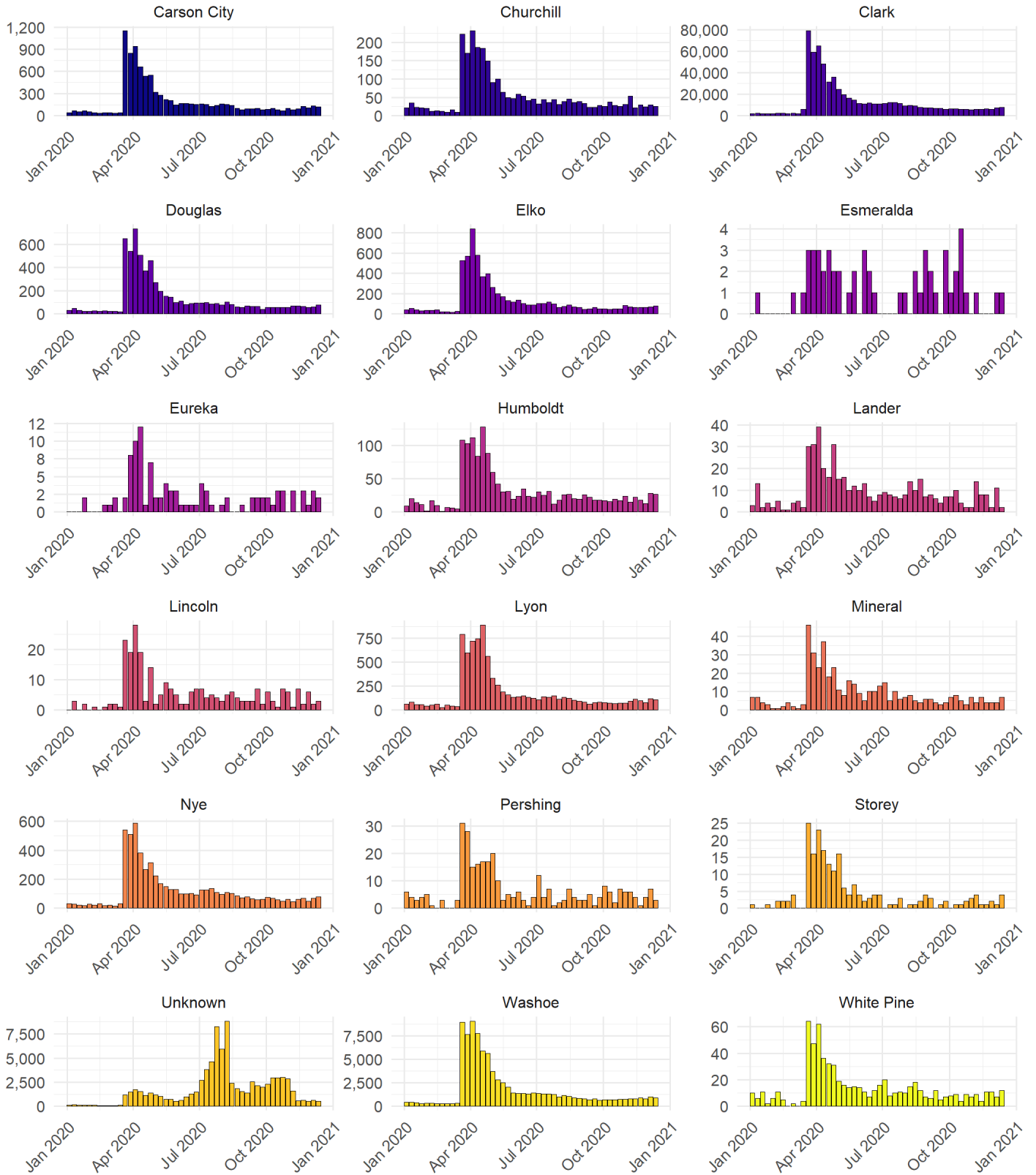
Source: DETR Internal Reporting

Source: DETR Internal Reporting

UI Summary Tables

Initial Claims by County

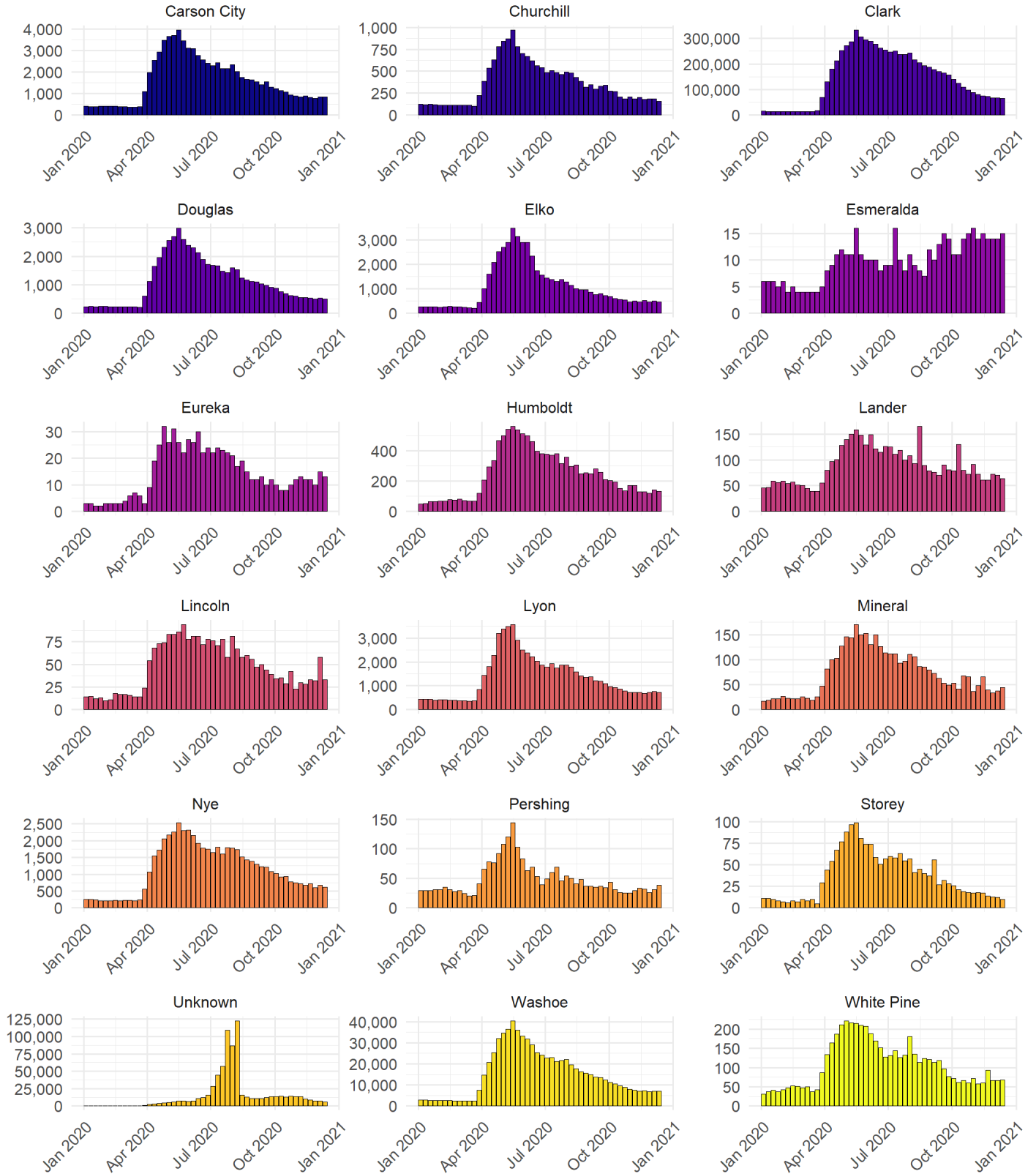
weekly claim totals since January 2020



Source: DETR Internal Reporting

Continued Claims by County

weekly claim totals since January 2020



Source: DETR Internal Reporting

Nevada Labor Force Summary

Statewide (Estimates in Thousands)

	Nov-20	Nov-19	+/- change	% change	Oct-20
Non-Seasonally Adjusted					
LABOR FORCE	1,548	1,554.6	-6	-0.4%	1,550.4
EMPLOYMENT	1,365.9	1,501.6	-135.76	-9.0%	1,357.5
UNEMPLOYMENT	182	53.0	130	244.5%	193.0
UNEMPLOYMENT RATE	11.8%	3.4%	8.4%	245.9%	12.4%
Seasonally Adjusted					
LABOR FORCE	1,513	1,551.7	-39	-2.5%	1,544.8
EMPLOYMENT	1,359.5	1,494.7	-135.23	-9.0%	1,360.7
UNEMPLOYMENT	153	57.0	96	168.9%	184.5
UNEMPLOYMENT RATE	10.1%	3.7%	6.5%	175.8%	11.9%

UNEMPLOYMENT RATES BASED ON UNROUNDED DATA

Employment adjusted by census relationships to reflect number of persons by place of residence.

Information compiled by DETR's Research & Analysis Bureau

Nevada Employment Summary

Seasonally Adjusted Current Employment Statistics

Area	November 2020	Monthly Change	Monthly Rate	Yearly Change	Yearly Rate
Nevada	1,317,800	9,200	0.7%	-109,500	-7.7%
Carson City MSA	29,500	0	0.0%	-1,500	-4.8%
Las Vegas - Paradise MSA	936,900	7,800	0.8%	-107,100	-10.3%
Reno - Sparks MSA	237,000	1,600	0.7%	-12,600	-5.0%

Non-Seasonally Adjusted Current Employment Statistics

Area	November 2020	Monthly Change	Monthly Rate	Yearly Change	Yearly Rate
Nevada	1,329,500	9,000	0.7%	-108,600	-7.6%
Carson City MSA	29,600	-200	-0.7%	-1,600	-5.1%
Las Vegas - Paradise MSA	944,400	9,200	1.0%	-106,500	-10.1%
Reno - Sparks MSA	240,800	3,000	1.3%	-13,200	-5.2%

LAUS Summary Tables

Non-Adjusted Unemployment Rates LAUS

	November 2020	October 2020	Monthly Change	November 2019	Yearly Change
Nevada	11.8	12.4	-0.6	3.4	8.4
Metropolitan Statistical Areas					
Carson City MSA	5.8	6.6	-0.8	3.3	2.5
Las Vegas - Paradise MSA	11.5	13.7	-2.2	3.6	7.9
Reno - Sparks MSA	5.4	6.3	-0.9	2.7	2.7
Combined Statistical Areas					
Reno-Carson City-Fernley, Nv Combined Statistical Area	5.5	6.4	-0.9	2.9	2.6
Counties					
Churchill County	4.1	4.5	-0.4	3.0	1.1
Clark County	11.5	13.7	-2.2	3.6	7.9
Douglas County	5.6	6.6	-1.0	3.4	2.2
Elko County	3.8	4.2	-0.4	2.6	1.2
Esmeralda County	5.1	5.2	-0.1	3.0	2.1
Eureka County	2.9	2.7	0.2	1.9	1.0
Humboldt County	3.9	4.3	-0.4	2.7	1.2
Lander County	3.9	4.5	-0.6	2.9	1.0
Lincoln County	4.5	4.7	-0.2	3.2	1.3
Lyon County	6.4	7.0	-0.6	4.0	2.4
Mineral County	4.4	5.2	-0.8	3.3	1.1
Nye County	7.6	8.9	-1.3	4.4	3.2
Pershing County	3.7	3.8	-0.1	3.6	0.1
Storey County	6.1	6.8	-0.7	3.1	3.0
Washoe County	5.4	6.3	-0.9	2.7	2.7
White Pine County	3.2	3.6	-0.4	2.5	0.7
Carson City	5.8	6.6	-0.8	3.3	2.5
Micropolitan Statistical Areas					
Elko Micropolitan Area	3.8	4.2	-0.4	2.6	1.2
Fallon Micropolitan Area	4.1	4.5	-0.4	3.0	1.1
Fernley Micropolitan Area	6.4	7.0	-0.6	4.0	2.4
Gardnerville Micropolitan Area	5.6	6.6	-1.0	3.4	2.2
Pahrump Micropolitan Area	7.6	8.9	-1.3	4.4	3.2
Winnemucca Micropolitan Area	3.9	4.3	-0.4	2.7	1.2
Cities					
Fernley City	6.9	7.5	-0.6	4.0	2.9
Boulder City	7.6	9.7	-2.1	3.4	4.2
Elko	4.0	4.4	-0.4	2.6	1.4
Henderson	9.8	11.6	-1.8	3.3	6.5
Las Vegas	11.4	13.5	-2.1	3.7	7.7
Mesquite	5.9	7.2	-1.3	2.9	3.0
North Las Vegas	12.5	14.5	-2.0	4.0	8.5
Reno	5.5	6.5	-1.0	2.7	2.8
Sparks	5.4	6.3	-0.9	2.7	2.7

Non-Seasonally Adjusted Labor Force Levels LAUS

	November 2020	October 2020	Monthly Change	November 2019	Yearly Change
Nevada	1,548,358	1,550,430	-2,072	1,554,598	-6,240
Metropolitan Statistical Areas					
Carson City MSA	25,636	26,316	-680	26,314	-678
Las Vegas - Paradise MSA	1,111,714	1,138,873	-27,159	1,139,511	-27,797
Reno - Sparks MSA	253,539	255,419	-1,880	262,162	-8,623
Combined Statistical Areas					
Reno-Carson City-Fernley, Nv Combined Statistical Area	324,837	328,668	-3,831	334,914	-10,077
Counties					
Churchill County	10,815	11,254	-439	11,202	-387
Clark County	1,111,714	1,138,873	-27,159	1,139,511	-27,797
Douglas County	22,943	23,603	-660	23,070	-127
Elko County	26,071	26,769	-698	26,857	-786
Esmeralda County	429	461	-32	464	-35
Eureka County	972	1,094	-122	1,125	-153
Humboldt County	7,846	8,257	-411	8,344	-498
Lander County	3,114	3,229	-115	3,196	-82
Lincoln County	2,006	2,117	-111	2,157	-151
Lyon County	22,719	23,330	-611	23,368	-649
Mineral County	1,968	2,008	-40	1,991	-23
Nye County	17,500	18,027	-527	17,591	-91
Pershing County	2,372	2,534	-162	2,584	-212
Storey County	2,015	2,022	-7	2,072	-57
Washoe County	251,524	253,397	-1,873	260,090	-8,566
White Pine County	4,490	4,612	-122	4,664	-174
Carson City	25,636	26,316	-680	26,314	-678
Micropolitan Statistical Areas					
Elko Micropolitan Area	27,043	27,863	-820	27,982	-939
Fallon Micropolitan Area	10,815	11,254	-439	11,202	-387
Fernley Micropolitan Area	22,719	23,330	-611	23,368	-649
Gardnerville Micropolitan Area	22,943	23,603	-660	23,070	-127
Pahrump Micropolitan Area	17,500	18,027	-527	17,591	-91
Winnemucca Micropolitan Area	7,846	8,257	-411	8,344	-498
Cities					
Fernley City	8,484	8,705	-221	8,686	-202
Boulder City	7,131	7,283	-152	7,615	-484
Elko	10,198	10,466	-268	10,488	-290
Henderson	157,950	161,008	-3,058	164,426	-6,476
Las Vegas	308,761	315,825	-7,064	317,202	-8,441
Mesquite	7,384	7,478	-94	7,992	-608
North Las Vegas	113,928	116,510	-2,582	115,931	-2,003
Reno	135,801	136,945	-1,144	140,251	-4,450
Sparks	56,426	56,876	-450	58,350	-1,924

Non-Seasonally Adjusted Employed Levels LAUS

	November 2020	October 2020	Monthly Change	November 2019	Yearly Change
Nevada	1,365,864	1,357,476	8,388	1,501,624	-135,760
Metropolitan Statistical Areas					
Carson City MSA	24,137	24,575	-438	25,443	-1,306
Las Vegas - Paradise MSA	983,745	982,666	1,079	1,098,734	-114,989
Reno - Sparks MSA	239,802	239,301	501	255,054	-15,252
Combined Statistical Areas					
Reno-Carson City-Fernley, Nv Combined Statistical Area	306,870	307,616	-746	325,222	-18,352
Counties					
Churchill County	10,367	10,746	-379	10,865	-498
Clark County	983,745	982,666	1,079	1,098,734	-114,989
Douglas County	21,659	22,053	-394	22,281	-622
Elko County	25,079	25,639	-560	26,159	-1,080
Esmeralda County	407	437	-30	450	-43
Eureka County	944	1,064	-120	1,104	-160
Humboldt County	7,539	7,906	-367	8,116	-577
Lander County	2,992	3,085	-93	3,104	-112
Lincoln County	1,915	2,018	-103	2,089	-174
Lyon County	21,272	21,687	-415	22,444	-1,172
Mineral County	1,882	1,904	-22	1,926	-44
Nye County	16,171	16,417	-246	16,814	-643
Pershing County	2,285	2,438	-153	2,492	-207
Storey County	1,893	1,884	9	2,007	-114
Washoe County	237,909	237,417	492	253,047	-15,138
White Pine County	4,346	4,447	-101	4,549	-203
Carson City	24,137	24,575	-438	25,443	-1,306
Micropolitan Statistical Areas					
Elko Micropolitan Area	26,023	26,703	-680	27,263	-1,240
Fallon Micropolitan Area	10,367	10,746	-379	10,865	-498
Fernley Micropolitan Area	21,272	21,687	-415	22,444	-1,172
Gardnerville Micropolitan Area	21,659	22,053	-394	22,281	-622
Pahrump Micropolitan Area	16,171	16,417	-246	16,814	-643
Winnemucca Micropolitan Area	7,539	7,906	-367	8,116	-577
Cities					
Fernley City	7,902	8,056	-154	8,337	-435
Boulder City	6,586	6,579	7	7,356	-770
Elko	9,791	10,010	-219	10,213	-422
Henderson	142,416	142,260	156	159,063	-16,647
Las Vegas	273,612	273,312	300	305,594	-31,982
Mesquite	6,948	6,941	7	7,761	-813
North Las Vegas	99,680	99,571	109	111,332	-11,652
Reno	128,314	128,049	265	136,479	-8,165
Sparks	53,395	53,285	110	56,793	-3,398

Non-Seasonally Adjusted Unemployed Levels LAUS

	November 2020	October 2020	Monthly Change	November 2019	Yearly Change
Nevada	182,494	192,954	-10,460	52,974	129,520
Metropolitan Statistical Areas					
Carson City MSA	1,499	1,741	-242	871	628
Las Vegas - Paradise MSA	127,969	156,207	-28,238	40,777	87,192
Reno - Sparks MSA	13,737	16,118	-2,381	7,108	6,629
Combined Statistical Areas					
Reno-Carson City-Fernley, Nv Combined Statistical Area	17,967	21,052	-3,085	9,692	8,275
Counties					
Churchill County	448	508	-60	337	111
Clark County	127,969	156,207	-28,238	40,777	87,192
Douglas County	1,284	1,550	-266	789	495
Elko County	992	1,130	-138	698	294
Esmeralda County	22	24	-2	14	8
Eureka County	28	30	-2	21	7
Humboldt County	307	351	-44	228	79
Lander County	122	144	-22	92	30
Lincoln County	91	99	-8	68	23
Lyon County	1,447	1,643	-196	924	523
Mineral County	86	104	-18	65	21
Nye County	1,329	1,610	-281	777	552
Pershing County	87	96	-9	92	-5
Storey County	122	138	-16	65	57
Washoe County	13,615	15,980	-2,365	7,043	6,572
White Pine County	144	165	-21	115	29
Carson City	1,499	1,741	-242	871	628
Micropolitan Statistical Areas					
Elko Micropolitan Area	1,020	1,160	-140	719	301
Fallon Micropolitan Area	448	508	-60	337	111
Fernley Micropolitan Area	1,447	1,643	-196	924	523
Gardnerville Micropolitan Area	1,284	1,550	-266	789	495
Pahrump Micropolitan Area	1,329	1,610	-281	777	552
Winnemucca Micropolitan Area	307	351	-44	228	79
Cities					
Fernley City	582	649	-67	349	233
Boulder City	545	704	-159	259	286
Elko	407	456	-49	275	132
Henderson	15,534	18,748	-3,214	5,363	10,171
Las Vegas	35,149	42,513	-7,364	11,608	23,541
Mesquite	436	537	-101	231	205
North Las Vegas	14,248	16,939	-2,691	4,599	9,649
Reno	7,487	8,896	-1,409	3,772	3,715
Sparks	3,031	3,591	-560	1,557	1,474

Statewide & Large Areas LAUS Last 13 Months (Estimates in Thousands)

	Nov-19	Dec-19	Jan-20	Feb-20	Mar-20	Apr-20	May-20	Jun-20	Jul-20	Aug-20	Sep-20	Oct-20	Nov-20	12m Avg.
Nevada - Non-Seasonally Adjusted														
LABOR FORCE	1,554.6	1,550.1	1,560.9	1,573.0	1,561.5	1,425.5	1,382.2	1,502.7	1,494.9	1,496.2	1,550.4	1,550.4	1,548.4	1,516.4
EMPLOYMENT	1,501.6	1,497.9	1,501.0	1,513.5	1,454.2	999.8	1,035.1	1,272.4	1,281.4	1,296.5	1,357.5	1,357.5	1,365.9	1,327.7
UNEMPLOYMENT	53.0	52.3	59.9	59.5	107.3	428.7	347.1	230.3	213.6	199.9	193.0	193.0	182.5	188.9
UNEMPLOYMENT RATE	3.4%	3.4%	3.8%	3.8%	6.9%	30.1%	25.1%	15.3%	14.3%	13.4%	12.4%	12.4%	11.8%	12.7%
Nevada - Seasonally Adjusted														
LABOR FORCE	1,551.7	1,551.4	1,555.3	1,559.5	1,566.2	1,429.1	1,382.8	1,501.1	1,488.6	1,495.3	1,547.9	1,544.8	1,512.9	1,511.2
EMPLOYMENT	1,494.7	1,494.3	1,499.0	1,503.3	1,458.5	999.3	1,033.3	1,273.6	1,277.9	1,295.9	1,355.0	1,360.7	1,359.5	1,325.9
UNEMPLOYMENT	57.0	57.1	56.3	56.2	107.8	429.7	349.5	227.4	210.7	199.4	192.9	184.5	153.4	185.4
UNEMPLOYMENT RATE	3.7%	3.7%	3.6%	3.6%	6.9%	30.1%	25.3%	15.2%	14.2%	13.3%	12.5%	11.9%	10.1%	12.5%
Carson City MSA - Non-Seasonally Adjusted														
LABOR FORCE	26.3	26.3	26.6	26.9	26.8	23.6	22.7	25.0	25.4	25.6	26.5	26.3	25.6	25.6
EMPLOYMENT	25.4	25.4	25.5	25.8	24.9	18.6	19.3	22.8	23.4	23.7	24.7	24.6	24.1	23.6
UNEMPLOYMENT	0.9	0.9	1.1	1.1	1.9	5.0	3.5	2.2	2.1	1.9	1.8	1.7	1.5	2.1
UNEMPLOYMENT RATE	3.3%	3.4%	4.1%	4.1%	7.1%	21.1%	15.2%	8.8%	8.1%	7.3%	6.9%	6.6%	5.8%	8.2%
Las Vegas - Paradise MSA - Non-Seasonally Adjusted														
LABOR FORCE	1,139.5	1,136.5	1,145.9	1,154.1	1,143.8	1,055.9	1,019.2	1,110.6	1,104.2	1,103.3	1,142.3	1,138.9	1,111.7	1,113.9
EMPLOYMENT	1,098.7	1,096.6	1,101.2	1,109.4	1,061.7	696.5	725.3	912.5	921.0	931.5	975.9	982.7	983.7	958.2
UNEMPLOYMENT	40.8	39.9	44.8	44.8	82.1	359.4	293.9	198.1	183.1	171.8	166.4	156.2	128.0	155.7
UNEMPLOYMENT RATE	3.6%	3.5%	3.9%	3.9%	7.2%	34.0%	28.8%	17.8%	16.6%	15.6%	14.6%	13.7%	11.5%	14.3%
Reno - Sparks MSA - Non-Seasonally Adjusted														
LABOR FORCE	262.2	261.7	260.5	263.8	261.5	223.7	221.4	245.8	245.2	246.4	255.6	255.4	253.5	249.5
EMPLOYMENT	255.1	254.5	251.6	255.3	246.8	178.0	185.9	224.3	225.2	228.4	238.5	239.3	239.8	230.6
UNEMPLOYMENT	7.1	7.2	8.8	8.5	14.7	45.7	35.5	21.4	20.1	18.0	17.1	16.1	13.7	18.9
UNEMPLOYMENT RATE	2.7%	2.8%	3.4%	3.2%	5.6%	20.4%	16.0%	8.7%	8.2%	7.3%	6.7%	6.3%	5.4%	7.8%
Reno-Carson City-Fernley, Nv Combined Statistical Area - Non-Seasonally Adjusted														
LABOR FORCE	334.9	334.3	333.9	337.9	335.7	292.2	287.5	315.7	315.4	317.1	328.9	328.7	324.8	321.0
EMPLOYMENT	325.2	324.4	321.8	326.2	315.5	233.1	242.3	288.1	289.6	293.7	306.7	307.6	306.9	296.3
UNEMPLOYMENT	9.7	9.9	12.0	11.7	20.1	59.1	45.2	27.6	25.8	23.4	22.2	21.1	18.0	24.7
UNEMPLOYMENT RATE	2.9%	3.0%	3.6%	3.5%	6.0%	20.2%	15.7%	8.7%	8.2%	7.4%	6.8%	6.4%	5.5%	7.9%

Note: Unemployment rates are based on unrounded data.

Employment adjusted by census relationships to reflect number of persons by place of residence.

Information compiled by DETR's Research & Analysis Bureau

Counties LAUS Last 13 Months (Estimates in Thousands)

	Nov-19	Dec-19	Jan-20	Feb-20	Mar-20	Apr-20	May-20	Jun-20	Jul-20	Aug-20	Sep-20	Oct-20	Nov-20	12m Avg.
Churchill County - Non-Seasonally Adjusted														
LABOR FORCE	11.2	11.1	11.4	11.3	11.5	10.6	10.2	10.7	10.5	10.5	11.0	11.3	10.8	10.9
EMPLOYMENT	10.9	10.7	11.0	10.9	10.8	9.4	9.4	10.1	9.9	9.9	10.5	10.7	10.4	10.3
UNEMPLOYMENT	0.3	0.3	0.4	0.4	0.7	1.2	0.9	0.6	0.6	0.6	0.5	0.5	0.4	0.6
UNEMPLOYMENT RATE	3.0%	3.0%	3.7%	3.6%	6.1%	11.3%	8.6%	5.7%	5.8%	5.3%	4.7%	4.5%	4.1%	5.5%
Clark County - Non-Seasonally Adjusted														
LABOR FORCE	1,139.5	1,136.5	1,145.9	1,154.1	1,143.8	1,055.9	1,019.2	1,110.6	1,104.2	1,103.3	1,142.3	1,138.9	1,111.7	1,113.9
EMPLOYMENT	1,098.7	1,096.6	1,101.2	1,109.4	1,061.7	696.5	725.3	912.5	921.0	931.5	975.9	982.7	983.7	958.2
UNEMPLOYMENT	40.8	39.9	44.8	44.8	82.1	359.4	293.9	198.1	183.1	171.8	166.4	156.2	128.0	155.7
UNEMPLOYMENT RATE	3.6%	3.5%	3.9%	3.9%	7.2%	34.0%	28.8%	17.8%	16.6%	15.6%	14.6%	13.7%	11.5%	14.3%
Douglas County - Non-Seasonally Adjusted														
LABOR FORCE	23.1	23.1	23.3	23.5	23.4	22.8	22.1	22.7	22.6	22.7	23.6	23.6	22.9	23.0
EMPLOYMENT	22.3	22.3	22.4	22.6	21.8	18.5	18.8	20.7	20.7	21.0	22.0	22.1	21.7	21.2
UNEMPLOYMENT	0.8	0.8	0.9	0.9	1.6	4.3	3.3	2.1	1.8	1.7	1.6	1.6	1.3	1.8
UNEMPLOYMENT RATE	3.4%	3.5%	4.0%	4.0%	6.8%	18.8%	14.9%	9.1%	8.1%	7.5%	7.0%	6.6%	5.6%	8.0%
Elko County - Non-Seasonally Adjusted														
LABOR FORCE	26.9	26.6	27.0	27.1	27.3	26.9	26.6	25.7	25.5	25.6	26.5	26.8	26.1	26.5
EMPLOYMENT	26.2	26.0	26.2	26.2	25.9	23.2	23.4	24.4	24.2	24.4	25.4	25.6	25.1	25.0
UNEMPLOYMENT	0.7	0.7	0.9	0.9	1.4	3.8	3.1	1.4	1.3	1.2	1.2	1.1	1.0	1.5
UNEMPLOYMENT RATE	2.6%	2.6%	3.3%	3.3%	5.1%	14.0%	11.8%	5.3%	5.1%	4.7%	4.3%	4.2%	3.8%	5.6%
Esmeralda County - Non-Seasonally Adjusted														
LABOR FORCE	0.5	0.4	0.5	0.5	0.5	0.4	0.4	0.4	0.4	0.4	0.4	0.5	0.4	0.4
EMPLOYMENT	0.4	0.4	0.5	0.4	0.4	0.4	0.4	0.4	0.4	0.4	0.4	0.4	0.4	0.4
UNEMPLOYMENT	0.0	0.0	0.0	0.0	0.0	0.0	0.0	0.0	0.0	0.0	0.0	0.0	0.0	0.0
UNEMPLOYMENT RATE	3.0%	4.3%	3.8%	3.9%	5.9%	6.8%	5.4%	3.6%	3.8%	4.3%	4.5%	5.2%	5.1%	4.7%
Eureka County - Non-Seasonally Adjusted														
LABOR FORCE	1.1	1.1	1.2	1.1	1.2	1.0	0.9	1.0	0.9	0.9	1.0	1.1	1.0	1.0
EMPLOYMENT	1.1	1.0	1.1	1.1	1.1	0.9	0.9	1.0	0.9	0.9	1.0	1.1	0.9	1.0
UNEMPLOYMENT	0.0	0.0	0.0	0.0	0.0	0.1	0.0	0.0	0.0	0.0	0.0	0.0	0.0	0.0
UNEMPLOYMENT RATE	1.9%	2.2%	2.2%	2.4%	4.0%	6.3%	4.1%	3.6%	4.2%	3.9%	3.1%	2.7%	2.9%	3.5%
Humboldt County - Non-Seasonally Adjusted														
LABOR FORCE	8.3	8.1	8.4	8.3	8.5	7.7	7.6	7.8	7.6	7.6	8.0	8.3	7.8	8.0
EMPLOYMENT	8.1	7.9	8.1	8.0	8.1	7.1	7.0	7.4	7.2	7.2	7.7	7.9	7.5	7.6
UNEMPLOYMENT	0.2	0.2	0.3	0.3	0.4	0.6	0.6	0.4	0.4	0.4	0.4	0.4	0.3	0.4
UNEMPLOYMENT RATE	2.7%	2.6%	3.2%	3.3%	5.2%	8.4%	7.8%	5.1%	5.1%	4.9%	4.5%	4.3%	3.9%	4.8%
Lander County - Non-Seasonally Adjusted														
LABOR FORCE	3.2	3.2	3.3	3.3	3.3	3.0	2.9	3.0	3.0	3.0	3.2	3.2	3.1	3.1
EMPLOYMENT	3.1	3.1	3.1	3.1	3.1	2.7	2.7	2.9	2.9	2.9	3.0	3.1	3.0	3.0
UNEMPLOYMENT	0.1	0.1	0.1	0.1	0.2	0.2	0.2	0.1	0.1	0.1	0.1	0.1	0.1	0.1
UNEMPLOYMENT RATE	2.9%	3.0%	3.9%	3.7%	5.8%	7.9%	6.1%	4.4%	4.6%	4.3%	4.2%	4.5%	3.9%	4.7%
Lincoln County - Non-Seasonally Adjusted														
LABOR FORCE	2.2	2.1	2.2	2.2	2.2	1.9	1.8	2.0	1.9	1.9	2.0	2.1	2.0	2.0
EMPLOYMENT	2.1	2.0	2.1	2.1	2.1	1.7	1.7	1.9	1.8	1.8	1.9	2.0	1.9	1.9
UNEMPLOYMENT	0.1	0.1	0.1	0.1	0.1	0.2	0.1	0.1	0.1	0.1	0.1	0.1	0.1	0.1
UNEMPLOYMENT RATE	3.2%	3.2%	3.7%	3.8%	6.1%	9.0%	6.3%	4.8%	5.0%	5.0%	4.5%	4.7%	4.5%	5.1%

Note: Unemployment rates are based on unrounded data.

Employment adjusted by census relationships to reflect number of persons by place of residence.

Information compiled by DETR's Research & Analysis Bureau

Counties LAUS Last 13 Months (Estimates in Thousands)

	Nov-19	Dec-19	Jan-20	Feb-20	Mar-20	Apr-20	May-20	Jun-20	Jul-20	Aug-20	Sep-20	Oct-20	Nov-20	12m Avg.
Lyon County - Non-Seasonally Adjusted														
LABOR FORCE	23.4	23.2	23.5	23.6	23.9	22.1	21.2	22.2	22.2	22.3	23.2	23.3	22.7	22.8
EMPLOYMENT	22.4	22.2	22.3	22.5	22.0	18.0	18.3	20.3	20.3	20.6	21.5	21.7	21.3	20.9
UNEMPLOYMENT	0.9	1.0	1.2	1.2	2.0	4.2	2.9	1.9	1.9	1.8	1.7	1.6	1.4	1.9
UNEMPLOYMENT RATE	4.0%	4.1%	5.0%	5.0%	8.2%	18.9%	13.8%	8.5%	8.4%	8.0%	7.3%	7.0%	6.4%	8.4%
Mineral County - Non-Seasonally Adjusted														
LABOR FORCE	2.0	2.0	2.0	2.0	2.1	2.0	2.0	1.9	1.9	2.0	2.0	2.0	2.0	2.0
EMPLOYMENT	1.9	1.9	1.9	1.9	2.0	1.8	1.8	1.8	1.8	1.8	1.9	1.9	1.9	1.9
UNEMPLOYMENT	0.1	0.1	0.1	0.1	0.1	0.2	0.2	0.1	0.1	0.1	0.1	0.1	0.1	0.1
UNEMPLOYMENT RATE	3.3%	3.4%	4.1%	3.9%	6.4%	10.9%	8.3%	5.6%	6.0%	5.9%	5.4%	5.2%	4.4%	5.8%
Nye County - Non-Seasonally Adjusted														
LABOR FORCE	17.6	17.5	17.8	17.9	18.0	17.2	16.7	17.1	17.1	17.3	17.9	18.0	17.5	17.5
EMPLOYMENT	16.8	16.7	17.0	17.1	16.5	13.9	14.1	15.5	15.4	15.6	16.3	16.4	16.2	15.9
UNEMPLOYMENT	0.8	0.8	0.9	0.9	1.5	3.4	2.6	1.6	1.7	1.7	1.6	1.6	1.3	1.6
UNEMPLOYMENT RATE	4.4%	4.5%	5.0%	4.9%	8.4%	19.5%	15.3%	9.5%	9.9%	9.7%	9.0%	8.9%	7.6%	9.4%
Pershing County - Non-Seasonally Adjusted														
LABOR FORCE	2.6	2.5	2.6	2.6	2.7	2.4	2.3	2.4	2.3	2.3	2.4	2.5	2.4	2.4
EMPLOYMENT	2.5	2.4	2.5	2.5	2.5	2.2	2.1	2.3	2.2	2.2	2.3	2.4	2.3	2.3
UNEMPLOYMENT	0.1	0.1	0.1	0.1	0.2	0.2	0.1	0.1	0.1	0.1	0.1	0.1	0.1	0.1
UNEMPLOYMENT RATE	3.6%	3.8%	4.0%	4.4%	6.7%	9.1%	6.3%	4.3%	4.6%	4.9%	4.4%	3.8%	3.7%	5.0%
Storey County - Non-Seasonally Adjusted														
LABOR FORCE	2.1	2.1	2.1	2.1	2.1	1.8	1.7	1.9	1.9	2.0	2.0	2.0	2.0	2.0
EMPLOYMENT	2.0	2.0	2.0	2.0	1.9	1.4	1.5	1.8	1.8	1.8	1.9	1.9	1.9	1.8
UNEMPLOYMENT	0.1	0.1	0.1	0.1	0.1	0.4	0.3	0.2	0.2	0.2	0.1	0.1	0.1	0.2
UNEMPLOYMENT RATE	3.1%	3.5%	3.8%	3.8%	6.4%	22.7%	15.9%	8.9%	8.7%	7.8%	7.4%	6.8%	6.1%	8.5%
Washoe County - Non-Seasonally Adjusted														
LABOR FORCE	260.1	259.6	258.4	261.7	259.5	221.9	219.7	243.8	243.3	244.5	253.6	253.4	251.5	247.6
EMPLOYMENT	253.0	252.5	249.6	253.3	244.9	176.6	184.5	222.6	223.4	226.6	236.6	237.4	237.9	228.8
UNEMPLOYMENT	7.0	7.1	8.8	8.4	14.6	45.3	35.2	21.2	19.9	17.8	16.9	16.0	13.6	18.7
UNEMPLOYMENT RATE	2.7%	2.7%	3.4%	3.2%	5.6%	20.4%	16.0%	8.7%	8.2%	7.3%	6.7%	6.3%	5.4%	7.8%
White Pine County - Non-Seasonally Adjusted														
LABOR FORCE	4.7	4.6	4.7	4.7	4.7	4.4	4.3	4.4	4.4	4.4	4.6	4.6	4.5	4.5
EMPLOYMENT	4.5	4.5	4.5	4.5	4.5	4.0	4.1	4.2	4.2	4.2	4.4	4.4	4.3	4.3
UNEMPLOYMENT	0.1	0.1	0.1	0.2	0.2	0.3	0.2	0.2	0.2	0.2	0.2	0.2	0.1	0.2
UNEMPLOYMENT RATE	2.5%	2.5%	3.0%	3.3%	5.2%	7.7%	5.4%	4.0%	4.0%	4.2%	3.8%	3.6%	3.2%	4.2%
Carson City - Non-Seasonally Adjusted														
LABOR FORCE	26.3	26.3	26.6	26.9	26.8	23.6	22.7	25.0	25.4	25.6	26.5	26.3	25.6	25.6
EMPLOYMENT	25.4	25.4	25.5	25.8	24.9	18.6	19.3	22.8	23.4	23.7	24.7	24.6	24.1	23.6
UNEMPLOYMENT	0.9	0.9	1.1	1.1	1.9	5.0	3.5	2.2	2.1	1.9	1.8	1.7	1.5	2.1
UNEMPLOYMENT RATE	3.3%	3.4%	4.1%	4.1%	7.1%	21.1%	15.2%	8.8%	8.1%	7.3%	6.9%	6.6%	5.8%	8.2%

Note: Unemployment rates are based on unrounded data.

Employment adjusted by census relationships to reflect number of persons by place of residence.

Information compiled by DETR's Research & Analysis Bureau

Micropolitan Areas LAUS Last 13 Months (Estimates in Thousands)

	Nov-19	Dec-19	Jan-20	Feb-20	Mar-20	Apr-20	May-20	Jun-20	Jul-20	Aug-20	Sep-20	Oct-20	Nov-20	12m Avg.
Elko Micropolitan Area - Non-Seasonally Adjusted														
LABOR FORCE	28.0	27.7	28.2	28.2	28.5	27.9	27.5	26.7	26.4	26.5	27.5	27.9	27.0	27.5
EMPLOYMENT	27.3	27.0	27.3	27.3	27.1	24.1	24.3	25.3	25.0	25.2	26.4	26.7	26.0	26.0
UNEMPLOYMENT	0.7	0.7	0.9	0.9	1.4	3.8	3.2	1.4	1.3	1.2	1.2	1.2	1.0	1.5
UNEMPLOYMENT RATE	2.6%	2.6%	3.2%	3.2%	5.1%	13.7%	11.6%	5.3%	5.0%	4.7%	4.3%	4.2%	3.8%	5.6%
Fallon Micropolitan Area - Non-Seasonally Adjusted														
LABOR FORCE	11.2	11.1	11.4	11.3	11.5	10.6	10.2	10.7	10.5	10.5	11.0	11.3	10.8	10.9
EMPLOYMENT	10.9	10.7	11.0	10.9	10.8	9.4	9.4	10.1	9.9	9.9	10.5	10.7	10.4	10.3
UNEMPLOYMENT	0.3	0.3	0.4	0.4	0.7	1.2	0.9	0.6	0.6	0.6	0.5	0.5	0.4	0.6
UNEMPLOYMENT RATE	3.0%	3.0%	3.7%	3.6%	6.1%	11.3%	8.6%	5.7%	5.8%	5.3%	4.7%	4.5%	4.1%	5.5%
Fernley Micropolitan Area - Non-Seasonally Adjusted														
LABOR FORCE	23.4	23.2	23.5	23.6	23.9	22.1	21.2	22.2	22.2	22.3	23.2	23.3	22.7	22.8
EMPLOYMENT	22.4	22.2	22.3	22.5	22.0	18.0	18.3	20.3	20.3	20.6	21.5	21.7	21.3	20.9
UNEMPLOYMENT	0.9	1.0	1.2	1.2	2.0	4.2	2.9	1.9	1.9	1.8	1.7	1.6	1.4	1.9
UNEMPLOYMENT RATE	4.0%	4.1%	5.0%	5.0%	8.2%	18.9%	13.8%	8.5%	8.4%	8.0%	7.3%	7.0%	6.4%	8.4%
Gardnerville Micropolitan Area - Non-Seasonally Adjusted														
LABOR FORCE	23.1	23.1	23.3	23.5	23.4	22.8	22.1	22.7	22.6	22.7	23.6	23.6	22.9	23.0
EMPLOYMENT	22.3	22.3	22.4	22.6	21.8	18.5	18.8	20.7	20.7	21.0	22.0	22.1	21.7	21.2
UNEMPLOYMENT	0.8	0.8	0.9	0.9	1.6	4.3	3.3	2.1	1.8	1.7	1.6	1.6	1.3	1.8
UNEMPLOYMENT RATE	3.4%	3.5%	4.0%	4.0%	6.8%	18.8%	14.9%	9.1%	8.1%	7.5%	7.0%	6.6%	5.6%	8.0%
Pahrump Micropolitan Area - Non-Seasonally Adjusted														
LABOR FORCE	17.6	17.5	17.8	17.9	18.0	17.2	16.7	17.1	17.1	17.3	17.9	18.0	17.5	17.5
EMPLOYMENT	16.8	16.7	17.0	17.1	16.5	13.9	14.1	15.5	15.4	15.6	16.3	16.4	16.2	15.9
UNEMPLOYMENT	0.8	0.8	0.9	0.9	1.5	3.4	2.6	1.6	1.7	1.7	1.6	1.6	1.3	1.6
UNEMPLOYMENT RATE	4.4%	4.5%	5.0%	4.9%	8.4%	19.5%	15.3%	9.5%	9.9%	9.7%	9.0%	8.9%	7.6%	9.4%
Winnemucca Micropolitan Area - Non-Seasonally Adjusted														
LABOR FORCE	8.3	8.1	8.4	8.3	8.5	7.7	7.6	7.8	7.6	7.6	8.0	8.3	7.8	8.0
EMPLOYMENT	8.1	7.9	8.1	8.0	8.1	7.1	7.0	7.4	7.2	7.2	7.7	7.9	7.5	7.6
UNEMPLOYMENT	0.2	0.2	0.3	0.3	0.4	0.6	0.6	0.4	0.4	0.4	0.4	0.4	0.3	0.4
UNEMPLOYMENT RATE	2.7%	2.6%	3.2%	3.3%	5.2%	8.4%	7.8%	5.1%	5.1%	4.9%	4.5%	4.3%	3.9%	4.8%

Note: Unemployment rates are based on unrounded data.

Employment adjusted by census relationships to reflect number of persons by place of residence.

Information compiled by DETR's Research & Analysis Bureau

Northern Cities LAUS Last 13 Months (Estimates in Thousands)

	Nov-19	Dec-19	Jan-20	Feb-20	Mar-20	Apr-20	May-20	Jun-20	Jul-20	Aug-20	Sep-20	Oct-20	Nov-20	12m Avg.
Fernley City - Non-Seasonally Adjusted														
LABOR FORCE	8.7	8.6	8.7	8.8	8.9	8.3	8.0	8.3	8.3	8.3	8.7	8.7	8.5	8.5
EMPLOYMENT	8.3	8.3	8.3	8.3	8.2	6.7	6.8	7.6	7.5	7.6	8.0	8.1	7.9	7.8
UNEMPLOYMENT	0.3	0.4	0.4	0.4	0.8	1.7	1.2	0.7	0.7	0.7	0.7	0.6	0.6	0.7
UNEMPLOYMENT RATE	4.0%	4.3%	4.9%	4.9%	8.4%	20.0%	14.7%	9.0%	8.8%	8.5%	7.7%	7.5%	6.9%	8.8%
Elko - Non-Seasonally Adjusted														
LABOR FORCE	10.5	10.4	10.6	10.6	10.7	10.2	10.0	10.0	9.9	10.0	10.4	10.5	10.2	10.3
EMPLOYMENT	10.2	10.1	10.2	10.2	10.1	9.0	9.2	9.5	9.4	9.5	9.9	10.0	9.8	9.8
UNEMPLOYMENT	0.3	0.3	0.4	0.4	0.6	1.2	0.9	0.5	0.5	0.5	0.5	0.5	0.4	0.5
UNEMPLOYMENT RATE	2.6%	2.6%	3.4%	3.3%	5.5%	11.6%	8.6%	5.0%	4.9%	4.8%	4.5%	4.4%	4.0%	5.2%
Reno - Non-Seasonally Adjusted														
LABOR FORCE	140.3	140.0	139.3	141.1	139.7	120.5	119.7	132.1	131.8	132.3	137.2	136.9	135.8	133.9
EMPLOYMENT	136.5	136.2	134.6	136.6	132.1	95.3	99.5	120.0	120.5	122.2	127.6	128.0	128.3	123.4
UNEMPLOYMENT	3.8	3.8	4.7	4.5	7.6	25.2	20.2	12.0	11.3	10.1	9.5	8.9	7.5	10.4
UNEMPLOYMENT RATE	2.7%	2.7%	3.4%	3.2%	5.5%	20.9%	16.9%	9.1%	8.5%	7.6%	7.0%	6.5%	5.5%	8.1%
Sparks - Non-Seasonally Adjusted														
LABOR FORCE	58.4	58.2	57.9	58.7	58.2	50.2	49.5	54.7	54.6	54.9	56.9	56.9	56.4	55.6
EMPLOYMENT	56.8	56.7	56.0	56.9	55.0	39.6	41.4	50.0	50.1	50.9	53.1	53.3	53.4	51.4
UNEMPLOYMENT	1.6	1.6	1.9	1.8	3.2	10.5	8.1	4.8	4.5	4.0	3.8	3.6	3.0	4.2
UNEMPLOYMENT RATE	2.7%	2.7%	3.2%	3.1%	5.5%	21.0%	16.3%	8.7%	8.2%	7.4%	6.7%	6.3%	5.4%	7.9%

Note: Unemployment rates are based on unrounded data.

Employment adjusted by census relationships to reflect number of persons by place of residence.

Information compiled by DETR's Research & Analysis Bureau

Southern Cities LAUS Last 13 Months (Estimates in Thousands)

	Nov-19	Dec-19	Jan-20	Feb-20	Mar-20	Apr-20	May-20	Jun-20	Jul-20	Aug-20	Sep-20	Oct-20	Nov-20	12m Avg.
Boulder City - Non-Seasonally Adjusted														
LABOR FORCE	7.6	7.6	7.7	7.7	7.6	6.2	6.0	6.9	6.9	7.0	7.2	7.3	7.1	7.1
EMPLOYMENT	7.4	7.3	7.4	7.4	7.1	4.7	4.9	6.1	6.2	6.2	6.5	6.6	6.6	6.4
UNEMPLOYMENT	0.3	0.3	0.3	0.3	0.5	1.6	1.2	0.8	0.8	0.7	0.7	0.7	0.5	0.7
UNEMPLOYMENT RATE	3.4%	3.5%	3.9%	3.7%	6.7%	25.0%	19.3%	11.6%	11.0%	10.5%	9.6%	9.7%	7.6%	10.2%
Henderson - Non-Seasonally Adjusted														
LABOR FORCE	164.4	164.0	165.3	166.6	164.5	143.1	138.1	154.7	154.7	154.9	160.7	161.0	157.9	157.1
EMPLOYMENT	159.1	158.8	159.4	160.6	153.7	100.8	105.0	132.1	133.3	134.9	141.3	142.3	142.4	138.7
UNEMPLOYMENT	5.4	5.2	5.9	6.0	10.8	42.3	33.1	22.6	21.4	20.0	19.4	18.7	15.5	18.4
UNEMPLOYMENT RATE	3.3%	3.2%	3.6%	3.6%	6.5%	29.5%	23.9%	14.6%	13.8%	12.9%	12.1%	11.6%	9.8%	12.1%
Las Vegas - Non-Seasonally Adjusted														
LABOR FORCE	317.2	316.2	319.1	321.2	318.4	285.3	276.7	304.7	304.1	304.4	315.1	315.8	308.8	307.5
EMPLOYMENT	305.6	305.0	306.3	308.6	295.3	193.7	201.7	253.8	256.2	259.1	271.4	273.3	273.6	266.5
UNEMPLOYMENT	11.6	11.2	12.8	12.6	23.1	91.6	74.9	50.9	47.9	45.3	43.7	42.5	35.1	41.0
UNEMPLOYMENT RATE	3.7%	3.5%	4.0%	3.9%	7.3%	32.1%	27.1%	16.7%	15.8%	14.9%	13.9%	13.5%	11.4%	13.7%
Mesquite - Non-Seasonally Adjusted														
LABOR FORCE	8.0	8.0	8.1	8.1	7.9	6.8	6.8	7.0	7.1	7.1	7.4	7.5	7.4	7.4
EMPLOYMENT	7.8	7.7	7.8	7.8	7.5	4.9	5.1	6.4	6.5	6.6	6.9	6.9	6.9	6.8
UNEMPLOYMENT	0.2	0.2	0.3	0.2	0.4	1.9	1.6	0.6	0.6	0.5	0.5	0.5	0.4	0.7
UNEMPLOYMENT RATE	2.9%	2.9%	3.4%	3.1%	4.6%	27.7%	24.2%	8.6%	8.0%	7.4%	6.9%	7.2%	5.9%	9.1%
North Las Vegas - Non-Seasonally Adjusted														
LABOR FORCE	115.9	115.5	116.7	117.4	117.0	105.1	102.8	112.4	111.9	111.8	115.8	116.5	113.9	113.1
EMPLOYMENT	111.3	111.1	111.6	112.4	107.6	70.6	73.5	92.5	93.3	94.4	98.9	99.6	99.7	97.1
UNEMPLOYMENT	4.6	4.4	5.1	5.0	9.4	34.6	29.3	20.0	18.5	17.4	16.9	16.9	14.2	16.0
UNEMPLOYMENT RATE	4.0%	3.8%	4.4%	4.3%	8.0%	32.9%	28.5%	17.7%	16.6%	15.5%	14.6%	14.5%	12.5%	14.5%

Note: Unemployment rates are based on unrounded data.

Employment adjusted by census relationships to reflect number of persons by place of residence.

Information compiled by DETR's Research & Analysis Bureau

CES Summary Tables

Seasonally Adjusted CES Sectors: Nevada

Series	November 2020	+/- October 2020	Monthly Rate	+/- November 2019	Yearly Rate	Maximum	Percent of Total
Total nonfarm	1,317,800	9,200	0.7%	-109,500	-7.7%	1,429,600	100.0%
Total private	1,163,300	8,300	0.7%	-97,100	-7.7%	1,263,700	88.3%
Goods-producing	166,100	-3,300	-1.9%	-7,000	-4.0%	208,100	12.6%
Mining and logging	16,500	0	0.0%	2,000	13.8%	16,500	1.3%
Construction	91,400	-3,700	-3.9%	-8,200	-8.2%	146,400	6.9%
Manufacturing	58,200	400	0.7%	-800	-1.4%	59,900	4.4%
Durable goods	38,300	100	0.3%	-1,300	-3.3%	40,700	2.9%
Nondurable goods	19,900	300	1.5%	500	2.6%	19,900	1.5%
Service-providing	1,151,700	12,500	1.1%	-102,500	-8.2%	1,258,500	87.4%
Private service-providing	997,200	11,600	1.2%	-90,100	-8.3%	1,092,600	75.7%
Trade, transportation, and utilities	250,400	4,900	2.0%	-11,600	-4.4%	263,200	19.0%
Wholesale Trade	34,500	2,100	6.5%	-3,000	-8.0%	39,100	2.6%
Retail trade	144,100	2,900	2.1%	-4,200	-2.8%	149,200	10.9%
Transportation, Warehousing, and Utilities	71,800	-100	-0.1%	-4,400	-5.8%	76,400	5.4%
Information	13,900	300	2.2%	-1,900	-12.0%	21,400	1.1%
Financial activities	71,100	2,700	3.9%	900	1.3%	71,100	5.4%
Finance and insurance	41,200	2,200	5.6%	1,400	3.5%	41,200	3.1%
Real estate and rental and leasing	29,900	500	1.7%	-500	-1.6%	30,400	2.3%
Professional and business services	180,500	2,300	1.3%	-18,900	-9.5%	204,500	13.7%
Professional and technical services	61,700	-500	-0.8%	-1,600	-2.5%	64,500	4.7%
Management of companies and enterprises	21,900	400	1.9%	-5,500	-20.1%	27,500	1.7%
Administrative and waste services	96,900	2,400	2.5%	-11,800	-10.9%	112,800	7.4%
Education and health services	140,900	900	0.6%	-3,900	-2.7%	146,400	10.7%
Educational services	11,400	0	0.0%	-2,200	-16.2%	13,900	0.9%
Health care and social assistance	129,500	900	0.7%	-1,700	-1.3%	132,600	9.8%
Leisure and hospitality	304,400	1,200	0.4%	-49,300	-13.9%	356,400	23.1%
Arts, entertainment, and recreation	32,800	700	2.2%	-2,200	-6.3%	35,300	2.5%
Accommodation and food services	271,600	500	0.2%	-47,100	-14.8%	322,600	20.6%
Other services	36,000	-700	-1.9%	-5,400	-13.0%	42,200	2.7%
Government	154,500	900	0.6%	-12,400	-7.4%	167,100	11.7%
Federal	20,600	-800	-3.7%	600	3.0%	23,100	1.6%
State government	40,100	1,000	2.6%	-1,100	-2.7%	44,200	3.0%
Local government	93,800	700	0.8%	-11,900	-11.3%	107,700	7.1%

Nevada Seasonally Adjusted CES Last 13 Months (Estimates in Thousands)

	Nov-19	Dec-19	Jan-20	Feb-20	Mar-20	Apr-20	May-20	Jun-20	Jul-20	Aug-20	Sep-20	Oct-20	Nov-20	12m Avg.
Total nonfarm	1,427.3	1,425.2	1,429.6	1,426.3	1,404.6	1,139.0	1,167.5	1,266.3	1,283.3	1,293.5	1,301.7	1,308.6	1,317.8	1,313.6
Total private	1,260.4	1,258.3	1,263.7	1,259.5	1,237.5	981.3	1,009.9	1,111.7	1,126.4	1,134.3	1,147.6	1,155.0	1,163.3	1,154.0
Goods-producing	173.1	171.4	171.1	173.0	176.7	166.2	170.7	167.8	168.8	166.7	167.1	169.4	166.1	169.6
Mining and logging	14.5	14.2	14.0	14.3	14.5	14.2	15.3	15.3	15.9	15.9	16.3	16.5	16.5	15.2
Construction	99.6	97.9	98.0	99.4	103.3	94.7	98.6	95.6	94.2	93.6	93.4	95.1	91.4	96.3
Manufacturing	59.0	59.3	59.1	59.3	58.9	57.3	56.8	56.9	58.7	57.2	57.4	57.8	58.2	58.1
Durable goods	39.6	39.8	39.6	39.6	39.1	37.9	37.4	37.7	39.4	37.6	37.6	38.2	38.3	38.5
Nondurable goods	19.4	19.5	19.5	19.7	19.8	19.4	19.4	19.2	19.3	19.6	19.8	19.6	19.9	19.6
Service-providing	1,254.2	1,253.8	1,258.5	1,253.3	1,227.9	972.8	996.8	1,098.5	1,114.5	1,126.8	1,134.6	1,139.2	1,151.7	1,144.0
Private service-providing	1,087.3	1,086.9	1,092.6	1,086.5	1,060.8	815.1	839.2	943.9	957.6	967.6	980.5	985.6	997.2	984.5
Trade, transportation, and utilities	262.0	260.8	259.4	258.6	254.6	213.9	219.0	231.6	233.3	237.9	244.0	245.5	250.4	242.4
Wholesale Trade	37.5	36.7	36.2	36.4	36.0	30.1	32.0	32.7	32.8	31.1	33.0	32.4	34.5	33.7
Retail trade	148.3	147.7	147.5	146.6	143.8	118.7	119.8	131.9	133.6	139.2	140.2	141.2	144.1	137.9
Transportation, Warehousing, and Utilities	76.2	76.4	75.7	75.6	74.8	65.1	67.2	67.0	66.9	67.6	70.8	71.9	71.8	70.9
Information	15.8	15.8	15.7	15.7	15.6	14.1	14.1	13.8	13.7	13.6	13.6	13.6	13.9	14.4
Financial activities	70.2	70.5	70.2	69.7	68.4	66.3	67.3	67.5	68.4	69.2	68.1	68.4	71.1	68.8
Finance and insurance	39.8	40.1	39.9	39.6	39.0	38.6	38.4	38.5	38.7	39.2	38.8	39.0	41.2	39.2
Real estate and rental and leasing	30.4	30.4	30.3	30.1	29.4	27.7	28.9	29.0	29.7	30.0	29.3	29.4	29.9	29.5
Professional and business services	199.4	199.1	204.5	200.0	197.8	157.9	155.5	164.6	170.1	170.6	175.5	178.2	180.5	179.5
Professional and technical services	63.3	63.3	64.5	63.4	63.4	60.9	58.8	59.7	61.0	60.2	61.2	62.2	61.7	61.7
Management of companies and enterprises	27.4	27.4	27.2	27.0	27.3	18.9	17.9	18.7	19.6	19.4	21.1	21.5	21.9	22.3
Administrative and waste services	108.7	108.4	112.8	109.6	107.1	78.1	78.8	86.2	89.5	91.0	93.2	94.5	96.9	95.5
Education and health services	144.8	144.1	145.9	146.4	145.0	128.5	129.0	132.8	135.9	138.5	140.4	140.0	140.9	138.9
Educational services	13.6	13.7	13.9	13.8	13.4	11.8	11.7	10.7	11.2	12.0	11.8	11.4	11.4	12.2
Health care and social assistance	131.2	130.4	132.0	132.6	131.6	116.7	117.3	122.1	124.7	126.5	128.6	128.6	129.5	126.7
Leisure and hospitality	353.7	355.4	355.4	354.4	338.5	203.6	221.1	297.6	301.4	300.7	302.2	303.2	304.4	303.2
Arts, entertainment, and recreation	35.0	35.2	35.3	35.3	32.9	27.5	31.0	34.2	32.6	32.9	33.0	32.1	32.8	32.9
Accommodation and food services	318.7	320.2	320.1	319.1	305.6	176.1	190.1	263.4	268.8	267.8	269.2	271.1	271.6	270.3
Other services	41.4	41.2	41.5	41.7	40.9	30.8	33.2	36.0	34.8	37.1	36.7	36.7	36.0	37.2
Government	166.9	166.9	165.9	166.8	167.1	157.7	157.6	154.6	156.9	159.2	154.1	153.6	154.5	159.6
Federal	20.0	19.7	19.9	20.1	20.2	20.2	20.3	20.3	20.6	23.0	22.3	21.4	20.6	20.7
State government	41.2	41.0	40.8	40.8	40.7	40.7	40.8	43.6	44.2	44.2	39.9	39.1	40.1	41.3
Local government	105.7	106.2	105.2	105.9	106.2	96.8	96.5	90.7	92.1	92.0	91.9	93.1	93.8	97.5

UNEMPLOYMENT RATES BASED ON UNROUNDED DATA

Employment adjusted by census relationships to reflect number of persons by place of residence.

Information compiled by DETR's Research & Analysis Bureau

Non-Seasonally Adjusted CES Sectors: Nevada

Series	November 2020	+/- October 2020	Monthly Rate	+/- November 2019	Yearly Rate	Maximum	Percent of Total
Total nonfarm	1,329,500	9,000	0.7%	-108,600	-7.6%	1,438,100	100.0%
Total private	1,172,000	8,300	0.7%	-95,900	-7.6%	1,267,900	88.2%
Goods-producing	167,600	-2,800	-1.6%	-6,200	-3.6%	211,500	12.6%
Mining and logging	16,500	-100	-0.6%	1,900	13.0%	16,600	1.2%
Metal ore mining	12,500	-200	-1.6%	1,500	13.6%	12,700	0.9%
Construction	92,800	-3,000	-3.1%	-7,400	-7.4%	148,800	7.0%
Construction of buildings	17,300	200	1.2%	-1,000	-5.5%	26,500	1.3%
Specialty trade contractors	66,300	-2,500	-3.6%	-7,300	-9.9%	107,200	5.0%
Manufacturing	58,300	300	0.5%	-700	-1.2%	59,700	4.4%
Durable goods	38,300	0	0.0%	-1,200	-3.0%	40,600	2.9%
Miscellaneous durable goods manufacturing	7,200	-100	-1.4%	0	0.0%	9,000	0.5%
Other miscellaneous durable goods manufacturing	6,400	-100	-1.5%	-100	-1.5%	8,700	0.5%
Nondurable goods	20,000	300	1.5%	500	2.6%	20,000	1.5%
Service-providing	1,161,900	11,800	1.0%	-102,400	-8.1%	1,264,300	87.4%
Private service-providing	1,004,400	11,100	1.1%	-89,700	-8.2%	1,094,100	75.5%
Trade, transportation, and utilities	257,800	10,300	4.2%	-12,400	-4.6%	270,200	19.4%
Wholesale Trade	34,700	2,100	6.4%	-3,000	-8.0%	39,200	2.6%
Retail trade	148,600	6,200	4.4%	-5,800	-3.8%	155,300	11.2%
Food and beverage stores	25,000	500	2.0%	-100	-0.4%	25,100	1.9%
Health and personal care stores	8,800	400	4.8%	-500	-5.4%	9,700	0.7%
Transportation, Warehousing, and Utilities	74,500	2,000	2.8%	-3,600	-4.6%	79,400	5.6%
Utilities	4,000	0	0.0%	0	0.0%	5,700	0.3%
Transportation and Warehousing	70,500	2,000	2.9%	-3,600	-4.9%	75,300	5.3%
Transit and ground passenger transportation	7,200	0	0.0%	-3,300	-31.4%	15,300	0.5%
Taxi and limousine service	3,500	0	0.0%	-2,400	-40.7%	11,300	0.3%
Information	14,000	200	1.4%	-2,000	-12.5%	21,500	1.1%
Telecommunications	3,600	100	2.9%	-500	-12.2%	10,400	0.3%
Financial activities	70,900	2,000	2.9%	300	0.4%	70,900	5.3%
Finance and insurance	40,800	1,700	4.3%	700	1.7%	40,800	3.1%
Credit intermediation and related activities	21,400	1,000	4.9%	900	4.4%	25,200	1.6%
Real estate and rental and leasing	30,100	300	1.0%	-400	-1.3%	30,500	2.3%
Professional and business services	182,400	1,900	1.1%	-18,800	-9.3%	203,700	13.7%
Professional and technical services	61,800	-1,100	-1.7%	-2,300	-3.6%	64,100	4.6%
Management of companies and enterprises	22,100	300	1.4%	-5,300	-19.3%	27,600	1.7%
Administrative and waste services	98,500	2,700	2.8%	-11,200	-10.2%	112,800	7.4%
Administrative and support services	94,500	1,900	2.1%	-10,200	-9.7%	107,700	7.1%
Employment services	23,000	2,300	11.1%	-3,500	-13.2%	33,700	1.7%
Education and health services	141,200	600	0.4%	-4,400	-3.0%	146,200	10.6%
Educational services	11,600	0	0.0%	-2,300	-16.5%	14,100	0.9%
Health care and social assistance	129,600	600	0.5%	-2,100	-1.6%	132,300	9.7%
Ambulatory health care services	59,700	100	0.2%	1,600	2.8%	60,000	4.5%
Hospitals	33,500	100	0.3%	200	0.6%	33,700	2.5%
Leisure and hospitality	301,700	-3,000	-1.0%	-47,400	-13.6%	360,300	22.7%
Arts, entertainment, and recreation	31,700	-200	-0.6%	-2,000	-5.9%	35,500	2.4%
Amusements, gambling, and recreation	22,900	-100	-0.4%	-2,500	-9.8%	27,200	1.7%
Gambling industries	8,800	200	2.3%	-1,400	-13.7%	13,800	0.7%
Accommodation and food services	270,000	-2,800	-1.0%	-45,400	-14.4%	325,000	20.3%
Accommodation	153,400	-2,700	-1.7%	-31,600	-17.1%	219,700	11.5%
Casino hotels	128,900	-2,100	-1.6%	-38,700	-23.1%	210,000	9.7%
Food services and drinking places	116,600	-100	-0.1%	-13,800	-10.6%	134,000	8.8%
Restaurants and other eating places	110,700	-400	-0.4%	-6,700	-5.7%	119,100	8.3%
Full-service restaurants	63,300	-100	-0.2%	300	0.5%	64,200	4.8%
Limited-service eating places	47,400	-300	-0.6%	-7,000	-12.9%	55,100	3.6%
Other services	36,400	-900	-2.4%	-5,000	-12.1%	42,700	2.7%
Government	157,500	700	0.4%	-12,700	-7.5%	170,800	11.8%
Federal	20,700	-600	-2.8%	700	3.5%	23,200	1.6%
State government	41,900	100	0.2%	-1,200	-2.8%	43,700	3.2%
State government education	22,100	0	0.0%	-1,000	-4.3%	23,800	1.7%
State government, excluding education	19,800	100	0.5%	-200	-1.0%	20,200	1.5%
Local government	94,900	1,200	1.3%	-12,200	-11.4%	109,500	7.1%
Local government education	48,600	400	0.8%	-10,200	-17.3%	59,800	3.7%
Local government, excluding education	46,300	800	1.8%	-2,000	-4.1%	49,400	3.5%

Nevada Non-Seasonally Adjusted CES Last 13 Months (Estimates in Thousands)

	Nov-19	Dec-19	Jan-20	Feb-20	Mar-20	Apr-20	May-20	Jun-20	Jul-20	Aug-20	Sep-20	Oct-20	Nov-20	12m Avg.
Total nonfarm	1,438.1	1,432.3	1,411.3	1,417.7	1,396.8	1,138.1	1,169.7	1,269.4	1,278.1	1,292.4	1,306.6	1,320.5	1,329.5	1,313.5
Goods-producing	173.8	171.9	168.5	169.8	174.3	164.9	169.8	169.5	171.2	168.9	168.6	170.4	167.6	169.6
Mining and logging	14.6	14.2	13.7	14.1	14.3	14.2	15.3	15.6	16.2	16.2	16.4	16.6	16.5	15.3
Metal ore mining	11.0	10.9	10.7	10.6	10.9	11.0	12.0	12.0	12.5	12.5	12.6	12.7	12.5	11.7
Construction	100.2	98.4	96.0	96.7	101.5	93.7	97.9	96.6	95.9	95.2	94.6	95.8	92.8	96.3
Construction of buildings	18.3	18.2	17.4	17.5	17.6	16.7	17.1	17.4	17.3	17.3	17.6	17.1	17.3	17.4
Specialty trade contractors	73.6	72.0	70.5	70.8	75.2	70.3	71.9	70.9	69.7	69.3	67.6	68.8	66.3	70.3
Manufacturing	59.0	59.3	58.8	59.0	58.5	57.0	56.6	57.3	59.1	57.5	57.6	58.0	58.3	58.1
Durable goods	39.5	39.8	39.3	39.4	38.8	37.7	37.2	38.1	39.8	37.9	37.8	38.3	38.3	38.5
Nondurable goods	19.5	19.5	19.5	19.6	19.7	19.3	19.4	19.2	19.3	19.6	19.8	19.7	20.0	19.6
Service-providing	1,264.3	1,260.4	1,242.8	1,247.9	1,222.5	973.2	999.9	1,099.9	1,106.9	1,123.5	1,138.0	1,150.1	1,161.9	1,143.9
Private service-providing	1,094.1	1,089.6	1,079.6	1,078.5	1,052.3	813.0	840.2	948.6	959.2	972.1	981.6	993.3	1,004.4	984.4
Trade, transportation, and utilities	270.2	270.0	258.3	256.6	250.9	211.1	217.0	230.4	232.2	237.0	242.5	247.5	257.8	242.6
Wholesale Trade	37.7	36.9	36.3	36.3	35.8	29.9	31.9	32.6	32.9	31.2	33.1	32.6	34.7	33.7
Retail trade	154.4	153.7	146.4	145.4	141.2	116.9	118.6	131.2	133.1	138.8	139.3	142.4	148.6	138.0
Food and beverage stores	25.1	25.1	24.7	24.8	24.7	23.3	23.4	24.1	24.1	24.2	24.5	24.5	25.0	24.4
Health and personal care stores	9.3	9.4	9.1	9.0	9.0	8.3	8.3	8.3	8.3	8.4	8.4	8.4	8.8	8.6
Transportation, Warehousing, and Utilities	78.1	79.4	75.6	74.9	73.9	64.3	66.5	66.6	66.2	67.0	70.1	72.5	74.5	71.0
Utilities	4.0	4.1	4.1	4.1	4.1	4.1	4.1	4.1	4.1	4.1	4.0	4.0	4.0	4.1
Transportation and Warehousing	74.1	75.3	71.5	70.8	69.8	60.2	62.4	62.5	62.1	62.9	66.1	68.5	70.5	66.9
Transit and ground passenger transportation	10.5	10.4	10.4	10.4	10.3	6.8	6.7	6.7	6.6	6.8	6.7	7.2	7.2	8.0
Taxi and limousine service	5.9	5.9	5.9	5.8	5.7	3.5	3.5	3.4	3.3	3.4	3.3	3.5	3.5	4.2
Information	16.0	15.8	15.4	15.6	15.4	14.1	14.2	14.1	13.6	13.6	13.5	13.8	14.0	14.4
Telecommunications	4.1	4.1	4.0	4.0	4.0	3.6	3.6	3.6	3.6	3.6	3.6	3.5	3.6	3.7
Financial activities	70.6	70.9	69.9	69.5	68.3	66.1	67.3	68.1	68.1	69.3	67.7	68.9	70.9	68.8
Finance and insurance	40.1	40.4	40.3	39.6	39.1	38.4	38.2	38.7	38.6	39.3	38.5	39.1	40.8	39.2
Credit intermediation and related activities	20.5	20.5	20.5	20.5	20.2	19.9	19.8	20.1	20.3	20.6	20.1	20.4	21.4	20.4
Real estate and rental and leasing	30.5	30.5	29.6	29.9	29.2	27.7	29.1	29.4	29.5	30.0	29.2	29.8	30.1	29.5
Professional and business services	201.2	197.8	203.7	199.6	196.1	157.7	155.4	164.6	168.9	171.5	175.3	180.5	182.4	179.5
Professional and technical services	64.1	63.8	64.0	63.6	63.4	61.4	58.8	59.3	60.9	60.2	61.1	62.9	61.8	61.8
Management of companies and enterprises	27.4	27.5	26.9	26.7	27.1	18.7	17.8	18.7	19.5	19.6	21.3	21.8	22.1	22.3
Administrative and waste services	109.7	106.5	112.8	109.3	105.6	77.6	78.8	86.6	88.5	91.7	92.9	95.8	98.5	95.4
Administrative and support services	104.7	101.2	107.7	104.1	100.5	74.3	75.7	83.6	85.4	88.6	89.7	92.6	94.5	91.5
Employment services	26.5	26.1	26.1	25.0	24.1	15.8	16.4	18.5	18.8	19.5	19.1	20.7	23.0	21.1
Education and health services	145.6	144.8	144.7	146.2	144.3	128.4	129.0	133.5	135.6	138.7	141.1	140.6	141.2	139.0
Educational services	13.9	13.9	13.9	14.1	13.7	12.1	11.8	10.6	10.6	11.5	11.5	11.6	11.6	12.2
Health care and social assistance	131.7	130.9	130.8	132.1	130.6	116.3	117.2	122.9	125.0	127.2	129.6	129.0	129.6	126.8
Ambulatory health care services	58.1	58.2	58.3	59.0	57.8	48.4	50.3	55.1	56.7	58.0	60.0	59.6	59.7	56.8
Hospitals	33.3	33.4	33.3	33.4	33.5	33.4	33.4	33.5	33.2	33.2	33.2	33.4	33.5	33.4
Leisure and hospitality	349.1	349.8	347.0	349.8	336.8	204.7	223.8	301.5	305.6	304.7	304.3	304.7	301.7	302.9
Arts, entertainment, and recreation	33.7	34.2	33.6	34.1	32.5	27.7	31.9	35.5	34.0	34.1	33.3	31.9	31.7	32.9
Amusements, gambling, and recreation	25.4	25.8	25.5	25.9	24.6	21.3	24.0	25.7	24.6	24.6	24.4	23.0	22.9	24.4
Accommodation and food services	315.4	315.6	313.4	315.7	304.3	177.0	191.9	266.0	271.6	270.6	271.0	272.8	270.0	270.0
Accommodation	185.0	184.7	183.4	182.8	177.6	120.3	119.6	160.4	161.0	160.0	158.7	156.1	153.4	159.8
Casino hotels	167.6	167.4	166.6	166.3	161.2	110.7	108.1	133.6	134.9	133.4	133.1	131.0	128.9	139.6
Gambling industries	10.2	10.3	10.2	10.2	9.7	7.0	7.7	9.3	9.3	9.4	9.2	8.6	8.8	9.1
Food services and drinking places	130.4	130.9	130.0	132.9	126.7	56.7	72.3	105.6	110.6	110.6	112.3	116.7	116.6	110.2
Full-service restaurants	63.0	62.4	62.7	64.1	60.6	17.7	29.3	55.1	59.4	58.6	59.3	63.4	63.3	54.7
Limited-service eating places	54.4	54.2	53.2	54.2	53.7	34.0	37.9	45.1	46.4	47.3	47.5	47.7	47.4	47.4
Other services	41.4	40.5	40.6	41.2	40.5	30.9	33.5	36.4	35.2	37.3	37.2	37.3	36.4	37.2
Government	170.2	170.8	163.2	169.4	170.2	160.2	159.7	151.3	147.7	151.4	156.4	156.8	157.5	159.6
Federal	20.0	19.9	19.8	19.8	19.9	20.0	20.3	20.5	20.7	23.2	22.4	21.3	20.7	20.7
State government	43.1	42.7	37.8	42.3	42.4	42.1	41.7	41.0	40.4	40.1	41.8	41.8	41.9	41.3
State government education	23.1	22.7	17.8	22.3	22.3	21.9	21.5	20.9	20.5	20.3	22.1	22.1	22.1	21.4
State government, excluding education	20.0	20.0	20.0	20.0	20.1	20.2	20.2	20.1	19.9	19.8	19.7	19.7	19.8	20.0
Local government	107.1	108.2	105.6	107.3	107.9	98.1	97.7	89.8	86.6	88.1	92.2	93.7	94.9	97.5
Local government education	58.8	59.8	57.0	58.6	59.3	53.5	53.1	44.1	40.5	42.4	46.9	48.2	48.6	51.0
Local government, excluding education	48.3	48.4	48.6	48.7	48.6	44.6	44.6	45.7	46.1	45.7	45.3	45.5	46.3	46.5

UNEMPLOYMENT RATES BASED ON UNROUNDED DATA
Employment adjusted by census relationships to reflect number of persons by place of residence.
Information compiled by DETR's Research & Analysis Bureau

Non-Seasonally Adjusted CES Sectors: Las Vegas - Paradise MSA

Series	November 2020	+/- October 2020	Monthly Rate	+/- November 2019	Yearly Rate	Maximum	Percent of Total
Total nonfarm	944,400	9,200	1.0%	-106,500	-10.1%	1,050,900	100.0%
Total private	839,200	8,900	1.1%	-101,600	-10.8%	940,800	88.9%
Goods-producing	94,600	-1,000	-1.0%	-5,600	-5.6%	139,900	10.0%
Mining and logging	600	0	0.0%	100	20.0%	700	0.1%
Construction	68,800	-1,300	-1.9%	-4,900	-6.6%	112,000	7.3%
Construction of buildings	11,400	200	1.8%	-600	-5.0%	19,400	1.2%
Specialty trade contractors	54,000	-2,000	-3.6%	-2,300	-4.1%	82,500	5.7%
Building foundation and exterior contractors	14,400	-100	-0.7%	-600	-4.0%	30,400	1.5%
Building finishing contractors	13,100	-400	-3.0%	-1,000	-7.1%	21,500	1.4%
Manufacturing	25,200	300	1.2%	-800	-3.1%	27,700	2.7%
Durable goods	13,800	-100	-0.7%	-800	-5.5%	18,200	1.5%
Other miscellaneous durable goods manufacturing	4,000	0	0.0%	-100	-2.4%	5,100	0.4%
Nondurable goods	11,400	400	3.6%	0	0.0%	11,600	1.2%
Service-providing	849,800	10,200	1.2%	-100,900	-10.6%	950,700	90.0%
Private service-providing	744,600	9,900	1.3%	-96,000	-11.4%	840,600	78.8%
Trade, transportation, and utilities	186,400	10,600	6.0%	-4,400	-2.3%	190,800	19.7%
Wholesale Trade	23,200	1,500	6.9%	-1,600	-6.5%	24,900	2.5%
Retail trade	110,700	6,600	6.3%	-2,500	-2.2%	115,900	11.7%
Food and beverage stores	19,500	600	3.2%	900	4.8%	19,500	2.1%
Health and personal care stores	7,000	200	2.9%	-800	-10.3%	8,200	0.7%
Transportation, Warehousing, and Utilities	52,500	2,500	5.0%	-300	-0.6%	53,200	5.6%
Utilities	2,600	0	0.0%	0	0.0%	3,500	0.3%
Transportation and Warehousing	49,900	2,500	5.3%	-300	-0.6%	50,600	5.3%
Transit and ground passenger transportation	6,100	0	0.0%	-3,600	-37.1%	14,400	0.6%
Taxi and limousine service	3,300	0	0.0%	-2,500	-43.1%	11,100	0.3%
Information	9,600	200	2.1%	-2,000	-17.2%	15,700	1.0%
Telecommunications	2,500	0	0.0%	-500	-16.7%	7,100	0.3%
Financial activities	55,500	1,500	2.8%	600	1.1%	55,500	5.9%
Finance and insurance	31,500	1,400	4.7%	400	1.3%	31,500	3.3%
Credit intermediation and related activities	17,200	600	3.6%	600	3.6%	19,800	1.8%
Real estate and rental and leasing	24,000	100	0.4%	200	0.8%	24,100	2.5%
Professional and business services	132,300	-700	-0.5%	-21,200	-13.8%	153,500	14.0%
Professional and technical services	42,600	-700	-1.6%	-3,700	-8.0%	46,300	4.5%
Management of companies and enterprises	16,300	400	2.5%	-6,500	-28.5%	23,000	1.7%
Administrative and waste services	73,400	-400	-0.5%	-11,000	-13.0%	86,400	7.8%
Administrative and support services	70,600	-500	-0.7%	-10,600	-13.1%	83,800	7.5%
Employment services	11,300	1,100	10.8%	-5,600	-33.1%	23,100	1.2%
Other support services	13,100	-800	-5.8%	2,400	22.4%	15,000	1.4%
Education and health services	103,700	600	0.6%	-2,500	-2.4%	106,200	11.0%
Health care and social assistance	92,300	500	0.5%	-3,300	-3.5%	95,800	9.8%
Ambulatory health care services	43,000	-400	-0.9%	-1,000	-2.3%	44,400	4.6%
Hospitals	24,500	100	0.4%	1,100	4.7%	24,500	2.6%
Leisure and hospitality	229,400	-1,900	-0.8%	-62,400	-21.4%	297,500	24.3%
Arts, entertainment, and recreation	20,100	100	0.5%	-3,600	-15.2%	24,200	2.1%
Amusements, gambling, and recreation	14,700	-100	-0.7%	-1,800	-10.9%	17,300	1.6%
Gambling industries	4,700	0	0.0%	-600	-11.3%	6,800	0.5%
Accommodation and food services	209,300	-2,000	-0.9%	-58,800	-21.9%	273,300	22.2%
Accommodation	122,700	-2,300	-1.8%	-39,000	-24.1%	184,700	13.0%
Casino hotels	115,500	-2,600	-2.2%	-32,000	-21.7%	174,900	12.2%
Food services and drinking places	86,600	300	0.3%	-19,800	-18.6%	107,900	9.2%
Restaurants and other eating places	81,400	-100	-0.1%	-13,900	-14.6%	95,300	8.6%
Full-service restaurants	46,200	100	0.2%	-6,700	-12.7%	52,900	4.9%
Limited-service eating places	35,200	-200	-0.6%	-7,200	-17.0%	42,700	3.7%
Other services	27,700	-400	-1.4%	-4,100	-12.9%	32,900	2.9%
Government	105,200	300	0.3%	-4,900	-4.5%	110,400	11.1%
Federal	14,300	-400	-2.7%	400	2.9%	16,000	1.5%
State government	18,200	0	0.0%	-3,400	-15.7%	22,600	1.9%
Local government	72,700	700	1.0%	-1,900	-2.5%	76,000	7.7%

Las Vegas MSA Non-Seasonally Adjusted CES Last 13 Months (Estimates in Thousands)

	Nov-19	Dec-19	Jan-20	Feb-20	Mar-20	Apr-20	May-20	Jun-20	Jul-20	Aug-20	Sep-20	Oct-20	Nov-20	12m Avg.
Total nonfarm	1,050.9	1,045.6	1,032.7	1,034.5	1,020.3	792.6	815.4	892.0	899.9	909.7	923.0	935.2	944.4	937.1
Total private	940.8	935.2	926.8	924.9	909.9	689.4	712.1	789.3	797.3	805.9	818.1	830.3	839.2	831.5
Goods-producing	100.2	100.2	99.5	100.0	103.1	95.1	97.4	97.7	97.1	95.7	95.6	95.6	94.6	97.6
Mining and logging	0.5	0.5	0.5	0.5	0.5	0.5	0.5	0.6	0.6	0.6	0.6	0.6	0.6	0.6
Construction	73.7	73.5	72.7	73.6	77.0	70.0	72.5	72.2	70.7	70.5	70.0	70.1	68.8	71.8
Construction of buildings	12.0	12.1	11.5	11.6	11.6	11.3	11.5	11.7	11.9	11.8	11.9	11.2	11.4	11.6
Specialty trade contractors	56.3	56.1	55.9	56.4	60.4	56.8	58.2	58.0	56.8	56.4	54.9	56.0	54.0	56.7
Building foundation and exterior contractors	15.0	14.9	14.6	14.7	15.8	14.1	14.0	13.9	13.8	14.1	14.0	14.5	14.4	14.4
Building finishing contractors	14.1	14.2	14.2	14.3	15.3	12.6	12.8	12.9	12.8	12.9	13.2	13.5	13.1	13.5
Manufacturing	26.0	26.2	26.3	25.9	25.6	24.6	24.4	24.9	25.8	24.6	25.0	24.9	25.2	25.3
Durable goods	14.6	14.8	14.7	14.5	14.3	13.5	13.3	13.8	14.6	13.5	13.7	13.9	13.8	14.0
Other miscellaneous durable goods manufacturing	4.1	4.1	4.1	4.1	4.0	3.9	4.0	4.1	4.1	4.1	4.1	4.0	4.0	4.0
Nondurable goods	11.4	11.4	11.6	11.4	11.3	11.1	11.1	11.1	11.2	11.1	11.3	11.0	11.4	11.2
Service-providing	950.7	945.4	933.2	934.5	917.2	697.5	718.0	794.3	802.8	814.0	827.4	839.6	849.8	839.5
Private service-providing	840.6	835.0	827.3	824.9	806.8	594.3	614.7	691.6	700.2	710.2	722.5	734.7	744.6	733.9
Trade, transportation, and utilities	190.8	190.5	182.7	181.1	177.5	147.8	149.7	160.6	162.0	167.6	171.2	175.8	186.4	171.1
Wholesale Trade	24.8	24.9	24.6	24.7	24.7	19.9	21.2	21.4	21.2	20.6	21.8	21.7	23.2	22.5
Retail trade	113.2	112.4	107.2	105.8	102.0	84.7	84.0	94.1	96.0	101.4	101.2	104.1	110.7	100.3
Food and beverage stores	18.6	18.7	18.4	18.5	18.3	17.7	17.8	18.5	18.6	18.7	18.8	18.9	19.5	18.5
Health and personal care stores	7.8	7.8	7.5	7.5	7.5	6.6	6.6	6.6	6.6	6.7	6.7	6.8	7.0	7.0
Transportation, Warehousing, and Utilities	52.8	53.2	50.9	50.6	50.8	43.2	44.5	45.1	44.8	45.6	48.2	50.0	52.5	48.3
Utilities	2.6	2.6	2.7	2.6	2.7	2.6	2.6	2.6	2.6	2.6	2.6	2.6	2.6	2.6
Transportation and Warehousing	50.2	50.6	48.2	48.0	48.1	40.6	41.9	42.5	42.2	43.0	45.6	47.4	49.9	45.7
Transit and ground passenger transportation	9.7	9.5	9.8	9.7	9.7	6.1	6.1	6.1	6.0	5.9	5.9	6.1	6.1	7.2
Taxi and limousine service	5.8	5.6	5.8	5.7	5.6	3.4	3.3	3.3	3.2	3.2	3.2	3.3	3.3	4.1
Information	11.6	11.4	11.3	11.5	11.3	9.7	9.8	9.6	9.4	9.4	9.1	9.4	9.6	10.1
Telecommunications	3.0	3.0	3.0	3.0	3.0	2.5	2.5	2.5	2.5	2.5	2.5	2.5	2.5	2.7
Financial activities	54.9	55.2	53.8	53.4	53.4	52.1	53.4	54.0	54.1	54.9	53.2	54.0	55.5	53.9
Finance and insurance	31.1	31.4	30.9	30.4	30.7	30.0	30.2	30.5	30.5	30.9	29.8	30.1	31.5	30.6
Credit intermediation and related activities	16.6	16.8	16.5	16.4	16.4	16.2	16.3	16.5	16.7	17.0	16.3	16.6	17.2	16.6
Real estate and rental and leasing	23.8	23.8	22.9	23.0	22.7	22.1	23.2	23.5	23.6	24.0	23.4	23.9	24.0	23.3
Professional and business services	153.5	149.9	153.5	150.4	150.3	117.0	115.4	123.7	126.8	128.5	131.5	133.0	132.3	134.4
Professional and technical services	46.3	45.6	45.2	45.2	45.2	43.3	41.3	41.7	43.1	41.9	42.4	43.3	42.6	43.4
Management of companies and enterprises	22.8	22.5	21.9	21.7	22.2	13.6	12.6	13.5	14.2	14.2	15.7	15.9	16.3	17.0
Administrative and waste services	84.4	81.8	86.4	83.5	82.9	60.1	61.5	68.5	69.5	72.4	73.4	73.8	73.4	73.9
Administrative and support services	81.2	78.7	83.8	80.7	80.1	57.6	59.0	65.9	66.8	69.8	70.7	71.1	70.6	71.2
Employment services	16.9	16.3	16.5	16.1	15.7	7.4	7.8	9.8	9.9	10.5	9.6	10.2	11.3	11.8
Other support services	10.7	10.4	15.0	13.1	12.6	11.6	12.5	13.1	12.2	12.7	12.9	13.9	13.1	12.8
Education and health services	106.2	105.7	105.5	106.2	103.7	90.7	90.0	94.9	96.0	100.0	102.9	103.1	103.7	100.2
Health care and social assistance	95.6	94.9	94.7	95.7	94.1	81.4	81.3	86.4	87.7	89.3	92.6	91.8	92.3	90.2
Ambulatory health care services	44.0	44.0	43.7	44.4	43.7	33.7	34.4	39.3	39.9	41.3	43.8	43.4	43.0	41.2
Hospitals	23.4	23.5	23.5	23.6	23.7	23.7	23.8	23.9	24.0	24.1	24.0	24.4	24.5	23.9
Leisure and hospitality	291.8	290.7	288.9	290.5	278.6	154.3	171.6	221.7	224.9	222.1	226.6	231.3	229.4	235.9
Arts, entertainment, and recreation	23.7	23.7	23.4	23.6	21.9	16.5	20.7	22.8	20.5	20.3	20.1	20.0	20.1	21.1
Amusements, gambling, and recreation	16.5	16.5	16.3	16.4	15.6	13.0	14.5	16.4	14.5	14.6	15.0	14.8	14.7	15.2
Accommodation and food services	268.1	267.0	265.5	266.9	256.7	137.8	150.9	198.9	204.4	201.8	206.5	211.3	209.3	214.8
Accommodation	161.7	160.6	159.6	159.7	155.8	96.9	97.5	123.7	125.1	123.7	125.7	125.0	122.7	131.3
Casino hotels	147.5	146.6	145.8	145.8	142.0	94.6	94.1	116.8	118.0	117.0	118.9	118.1	115.5	122.8
Food services and drinking places	106.4	106.4	105.9	107.2	100.9	40.9	53.4	75.2	79.3	78.1	80.8	86.3	86.6	83.4
Restaurants and other eating places	95.3	94.9	93.7	94.7	90.7	39.3	52.3	72.8	77.9	76.7	78.6	81.5	81.4	77.9
Full-service restaurants	52.9	52.8	52.6	52.9	49.5	14.6	24.2	40.5	44.5	42.7	44.0	46.1	46.2	42.5
Limited-service eating places	42.4	42.1	41.1	41.8	41.2	24.7	28.1	32.3	33.4	34.0	34.6	35.4	35.2	35.3
Other services	31.8	31.6	31.6	31.8	32.0	22.7	24.8	27.1	27.0	27.7	28.0	28.1	27.7	28.3
Government	110.1	110.4	105.9	109.6	110.4	103.2	103.3	102.7	102.6	103.8	104.9	104.9	105.2	105.6
Federal	13.9	13.8	13.8	13.7	13.7	13.8	13.9	13.9	14.1	16.0	15.3	14.7	14.3	14.2
State government	21.6	21.2	18.6	21.0	21.0	20.7	20.4	18.6	18.3	18.1	18.2	18.2	18.2	19.4
Local government	74.6	75.4	73.5	74.9	75.7	68.7	69.0	70.2	70.2	69.7	71.4	72.0	72.7	72.0

UNEMPLOYMENT RATES BASED ON UNROUNDED DATA
Employment adjusted by census relationships to reflect number of persons by place of residence.
Information compiled by DETR's Research & Analysis Bureau

Non-Seasonally Adjusted CES Sectors: Reno

Series	November 2020	+/- October 2020	Monthly Rate	+/- November 2019	Yearly Rate	Maximum	Percent of Total
Total nonfarm	240,800	3,000	1.3%	-13,200	-5.2%	254,000	100.0%
Total private	211,500	3,000	1.4%	-10,800	-4.9%	222,300	87.8%
Goods-producing	44,100	0	0.0%	300	0.7%	44,800	18.3%
Mining and logging	300	0	0.0%	0	0.0%	1,400	0.1%
Construction	17,800	-500	-2.7%	-500	-2.7%	25,500	7.4%
Manufacturing	26,000	500	2.0%	800	3.2%	26,200	10.8%
Miscellaneous durable goods manufacturing	2,100	0	0.0%	-100	-4.5%	3,700	0.9%
Service-providing	196,700	3,000	1.5%	-13,500	-6.4%	210,200	81.7%
Private service-providing	167,400	3,000	1.8%	-11,100	-6.2%	178,500	69.5%
Trade, transportation, and utilities	52,700	800	1.5%	-3,900	-6.9%	57,000	21.9%
Wholesale Trade	9,600	400	4.3%	-300	-3.0%	11,600	4.0%
Retail trade	25,300	100	0.4%	-900	-3.4%	26,400	10.5%
Food and beverage stores	3,900	100	2.6%	0	0.0%	3,900	1.6%
Transportation, Warehousing, and Utilities	17,800	300	1.7%	-2,700	-13.2%	20,700	7.4%
Information	3,000	0	0.0%	0	0.0%	3,800	1.2%
Financial activities	11,100	100	0.9%	200	1.8%	11,100	4.6%
Finance and insurance	6,200	100	1.6%	100	1.6%	6,800	2.6%
Professional and business services	35,500	2,300	6.9%	200	0.6%	35,500	14.7%
Administrative and waste services	17,300	1,800	11.6%	-1,000	-5.5%	19,200	7.2%
Education and health services	27,000	300	1.1%	-900	-3.2%	28,300	11.2%
Leisure and hospitality	32,300	-400	-1.2%	-6,100	-15.9%	44,500	13.4%
Accommodation and food services	26,800	-100	-0.4%	-5,900	-18.0%	37,900	11.1%
Accommodation	12,100	0	0.0%	-3,200	-20.9%	28,900	5.0%
Casino hotels	10,700	0	0.0%	-3,100	-22.5%	27,800	4.4%
Food services and drinking places	14,700	-100	-0.7%	-2,700	-15.5%	17,700	6.1%
Other services	5,800	-100	-1.7%	-600	-9.4%	7,400	2.4%
Government	29,300	0	0.0%	-2,400	-7.6%	31,800	12.2%
Federal	4,000	-100	-2.4%	200	5.3%	4,400	1.7%
State government	10,300	100	1.0%	-1,300	-11.2%	12,000	4.3%
Local government	15,000	0	0.0%	-1,300	-8.0%	17,600	6.2%

Reno MSA Non-Seasonally Adjusted CES Last 13 Months (Estimates in Thousands)

	Nov-19	Dec-19	Jan-20	Feb-20	Mar-20	Apr-20	May-20	Jun-20	Jul-20	Aug-20	Sep-20	Oct-20	Nov-20	12m Avg.
Total nonfarm	254.0	253.2	245.8	248.1	247.4	212.1	219.2	229.7	230.3	233.6	235.7	237.8	240.8	236.1
Total private	222.3	221.4	216.2	216.5	215.7	182.2	189.4	202.0	203.3	205.8	205.8	208.5	211.5	206.5
Goods-producing	43.8	43.6	42.6	42.9	43.7	43.2	44.7	44.4	44.2	44.5	44.0	44.1	44.1	43.8
Mining and logging	0.3	0.3	0.3	0.3	0.3	0.3	0.3	0.3	0.3	0.3	0.3	0.3	0.3	0.3
Construction	18.3	17.8	16.9	17.1	17.8	17.5	18.6	18.7	18.3	18.5	18.5	18.3	17.8	18.0
Manufacturing	25.2	25.5	25.4	25.5	25.6	25.4	25.8	25.4	25.6	25.7	25.2	25.5	26.0	25.6
Miscellaneous durable goods manufacturing	2.2	2.2	2.2	2.2	2.2	2.2	2.1	2.1	2.1	2.2	2.1	2.1	2.1	2.1
Service-providing	210.2	209.6	203.2	205.2	203.7	168.9	174.5	185.3	186.1	189.1	191.7	193.7	196.7	192.3
Private service-providing	178.5	177.8	173.6	173.6	172.0	139.0	144.7	157.6	159.1	161.3	161.8	164.4	167.4	162.7
Trade, transportation, and utilities	56.6	57.0	53.9	53.7	53.5	45.3	47.8	49.2	49.3	49.7	51.3	51.9	52.7	51.3
Wholesale Trade	9.9	9.9	9.8	9.8	9.8	8.7	8.7	8.8	8.8	8.7	9.2	9.2	9.6	9.2
Retail trade	26.2	26.4	24.8	24.6	24.4	20.4	22.6	23.9	24.2	24.4	25.1	25.2	25.3	24.3
Transportation, Warehousing, and Utilities	20.5	20.7	19.3	19.3	19.3	16.2	16.5	16.5	16.3	16.6	17.0	17.5	17.8	17.8
Information	3.0	3.1	3.0	3.0	3.0	3.0	3.0	3.0	3.0	3.0	3.0	3.0	3.0	3.0
Financial activities	10.9	11.0	10.9	10.9	10.9	10.8	10.8	10.9	10.9	11.0	10.9	11.0	11.1	10.9
Finance and insurance	6.1	6.1	6.1	6.1	6.1	6.1	6.0	6.0	6.0	6.1	6.1	6.1	6.2	6.1
Professional and business services	35.3	34.1	33.8	33.2	32.1	27.3	28.5	29.5	29.9	30.4	30.9	33.2	35.5	31.5
Administrative and waste services	18.3	17.7	16.7	16.4	16.2	12.7	13.1	13.7	14.0	14.0	14.1	15.5	17.3	15.1
Education and health services	27.9	27.9	28.0	28.2	28.1	25.7	25.6	25.5	25.7	26.5	26.8	26.7	27.0	26.8
Leisure and hospitality	38.4	38.4	37.7	38.3	38.0	22.4	23.6	33.9	34.8	34.8	33.0	32.7	32.3	33.3
Accommodation and food services	32.7	32.4	32.0	32.5	32.4	19.9	21.3	27.4	28.3	28.0	26.5	26.9	26.8	27.9
Accommodation	15.3	15.0	15.0	15.0	14.9	11.8	11.7	14.1	14.3	13.9	12.3	12.1	12.1	13.5
Casino hotels	13.8	13.6	13.6	13.6	13.5	10.7	10.6	12.4	12.6	12.2	10.8	10.7	10.7	12.1
Food services and drinking places	17.4	17.4	17.0	17.5	17.5	8.1	9.6	13.3	14.0	14.1	14.2	14.8	14.7	14.4
Other services	6.4	6.3	6.3	6.3	6.4	4.5	5.4	5.6	5.5	5.9	5.9	5.9	5.8	5.8
Government	31.7	31.8	29.6	31.6	31.7	29.9	29.8	27.7	27.0	27.8	29.9	29.3	29.3	29.6
Federal	3.8	3.8	3.8	3.8	3.9	3.9	3.9	3.9	3.9	4.2	4.2	4.1	4.0	4.0
State government	11.6	11.6	9.9	11.6	11.6	11.4	11.3	10.1	10.1	10.1	10.7	10.2	10.3	10.7
Local government	16.3	16.4	15.9	16.2	16.2	14.6	14.6	13.7	13.0	13.5	15.0	15.0	15.0	14.9

UNEMPLOYMENT RATES BASED ON UNROUNDED DATA
Employment adjusted by census relationships to reflect number of persons by place of residence.
Information compiled by DETR's Research & Analysis Bureau

Non-Seasonally Adjusted CES Sectors: Carson City

Series	November 2020	+/- October 2020	Monthly Rate	+/- November 2019	Yearly Rate	Maximum	Percent of Total
Total nonfarm	29,600	-200	-0.7%	-1,600	-5.1%	33,600	100.0%
Total private	20,200	-300	-1.5%	-1,300	-6.0%	23,100	68.2%
Goods-producing	4,200	0	0.0%	-100	-2.3%	5,800	14.2%
Manufacturing	2,700	0	0.0%	0	0.0%	4,200	9.1%
Service-providing	25,400	-200	-0.8%	-1,500	-5.6%	28,300	85.8%
Private service-providing	16,000	-300	-1.8%	-1,200	-7.0%	17,700	54.1%
Trade, transportation, and utilities	4,200	100	2.4%	-200	-4.5%	5,300	14.2%
Retail trade	3,200	100	3.2%	-200	-5.9%	4,300	10.8%
Professional and business services	2,000	0	0.0%	-300	-13.0%	2,600	6.8%
Leisure and hospitality	4,200	-100	-2.3%	500	13.5%	4,500	14.2%
Government	9,400	100	1.1%	-300	-3.1%	10,900	31.8%
Federal	600	0	0.0%	0	0.0%	900	2.0%
State government	7,000	100	1.4%	0	0.0%	8,200	23.6%
Local government	1,800	0	0.0%	-300	-14.3%	2,800	6.1%

Carson City MSA Non-Seasonally Adjusted CES Last 13 Months (Estimates in Thousands)

	Nov-19	Dec-19	Jan-20	Feb-20	Mar-20	Apr-20	May-20	Jun-20	Jul-20	Aug-20	Sep-20	Oct-20	Nov-20	12m Avg.
Total nonfarm	31.2	30.9	30.6	30.7	30.6	27.0	27.6	28.5	29.4	29.9	30.1	29.8	29.6	29.6
Total private	21.5	21.4	21.2	21.3	21.1	17.6	18.1	18.9	19.8	20.4	20.5	20.5	20.2	20.1
Goods-producing	4.3	4.2	4.2	4.2	4.2	3.8	4.0	4.2	4.2	4.2	4.2	4.2	4.2	4.2
Manufacturing	2.7	2.7	2.6	2.6	2.7	2.5	2.5	2.6	2.7	2.7	2.7	2.7	2.7	2.6
Service-providing	26.9	26.7	26.4	26.5	26.4	23.2	23.6	24.3	25.2	25.7	25.9	25.6	25.4	25.4
Private service-providing	17.2	17.2	17.0	17.1	16.9	13.8	14.1	14.7	15.6	16.2	16.3	16.3	16.0	15.9
Trade, transportation, and utilities	4.4	4.4	4.2	4.2	4.1	3.6	3.7	3.7	3.7	3.9	4.0	4.1	4.2	4.0
Retail trade	3.4	3.4	3.3	3.3	3.2	2.7	2.7	2.9	2.9	3.0	3.1	3.1	3.2	3.1
Professional and business services	2.3	2.3	2.2	2.2	2.2	1.8	1.8	1.8	1.9	1.9	1.9	2.0	2.0	2.0
Leisure and hospitality	3.7	3.7	3.6	3.6	3.5	2.9	3.1	4.2	4.3	4.3	4.3	4.3	4.2	3.8
Government	9.7	9.5	9.4	9.4	9.5	9.4	9.5	9.6	9.6	9.5	9.6	9.3	9.4	9.5
Federal	0.6	0.5	0.5	0.5	0.5	0.6	0.6	0.6	0.6	0.7	0.7	0.6	0.6	0.6
State government	7.0	7.0	6.9	6.9	7.0	7.0	7.1	7.1	7.0	7.0	7.0	6.9	7.0	7.0
Local government	2.1	2.0	2.0	2.0	2.0	1.8	1.8	1.9	2.0	1.8	1.9	1.8	1.8	1.9

UNEMPLOYMENT RATES BASED ON UNROUNDED DATA
Employment adjusted by census relationships to reflect number of persons by place of residence.
Information compiled by DETR's Research & Analysis Bureau

End Notes

Prepared by the Research and Analysis Bureau with contributions from: Alex Capello, Jason Gortari, Jeremy Hays, Michael La Rue, Dionny McDonnell, Christopher Robison, Dave Schmidt, Marianne Segurson, and Tim Wilcox.

Special thanks to all the R and RStudio developers that built the packages to make this possible. Packages used in this report include tidyverse, viridis, ggthemes, scales, data.table, RcppRoll, plotly, patchwork, reshape2, knitr, ggforce, DT, and gt.

This workforce product was funded by a grant awarded by the U.S. Department of Labor's Employment and Training Administration. The product was created by the recipient and does not necessarily reflect the official position of the U.S. Department of Labor. The U.S. Department of Labor makes no guarantees, warranties, or assurances of any kind, express or implied, with respect to such information, including any information on linked sites and including, but not limited to, accuracy of the information or its completeness, timeliness, usefulness, adequacy, continued availability, or ownership. This product is copyrighted by the institution that created it. Internal use by an organization and/or personal use by an individual for non-commercial purposes is permissible. All other uses require the prior authorization of the copyright owner.