

DAVID SCHMIDT
Chief Economist



ONE NEVADA - Growing a Skilled, Diverse Workforce
RESEARCH AND ANALYSIS BUREAU

STEVE SISOLAK
Governor

ELISA CAFFERATA
Director

Nevada Statewide & Metro Area Labor Market Overview

October 2022

Published on November 17, 2022

The seasonally adjusted unemployment rate in Nevada increased slightly in October from 4.4 percent to 4.6 percent and mirroring the increase in the U.S. unemployment rate from 3.5 to 3.7 percent. At the same time, the state added 7,500 jobs in the state over the month. On the non-adjusted side of things, the state saw an increase in unemployment rate from 4.8 percent to 5.2 percent and the state added 14,800 unadjusted jobs.

Moving on to the MSA (Metropolitan Statistical Area) level of the state, when adjusting for seasonality the Las Vegas MSA saw an increase of 4,900 jobs (an increase of 0.5 percent), the Reno MSA saw a decrease of 500 jobs (a decrease of around 0.2 percent), and the Carson City MSA added 100 jobs (an increase of 0.3 percent). For the un-adjusted figures of Nevada's MSAs, the Las Vegas MSA added 12,900 jobs (an increase of about 1.2 percent), the Reno MSA added 500 jobs (an increase of 0.2 percent), and the Carson MSA added 200 jobs (an increase of 0.6 percent).

Information on how to file an unemployment insurance or pandemic unemployment assistance claim, where to get updates from DETR, or what other services are available from the department can be found at the end of this write-up. Additional labor market information can be found on our website (<http://nevadaworkforce.com/>).

October 2022 Seasonally Adjusted Employment Summary (in thousands)

Area	Current Month	Previous Month	Monthly Change	M/M Growth	Previous Year	Annual Change	Y/Y Growth
U.S.	153,308.0	153,047.0	261.0	0.2%	148,005.0	5,303.0	3.6%
Nevada	1,471.8	1,464.3	7.5	0.5%	1,416.3	55.5	3.9%
Carson City MSA	31.7	31.6	0.1	0.3%	30.9	0.8	2.6%
Las Vegas - Paradise MSA	1,072.5	1,067.6	4.9	0.5%	1,026.2	46.3	4.5%
Reno - Sparks MSA	259.5	260.0	-0.5	-0.2%	252.2	7.3	2.9%

October 2022 Not Seasonally Adjusted Employment Summary (in thousands)

Area	Current Month	Previous Month	Monthly Change	M/M Growth	Previous Year	Annual Change	Y/Y Growth
U.S.	154,369.0	153,197.0	1,172.0	0.8%	149,310.0	5,059.0	3.4%
Nevada	1,482.1	1,467.3	14.8	1.0%	1,427.3	54.8	3.8%
Carson City MSA	31.8	31.6	0.2	0.6%	31.0	0.8	2.6%
Las Vegas - Paradise MSA	1,081.2	1,068.3	12.9	1.2%	1,032.6	48.6	4.7%
Reno - Sparks MSA	261.3	260.8	0.5	0.2%	254.2	7.1	2.8%

500 E. Third Street, Room 200 | Carson City, Nevada 89713 | 2800 E. St. Louis Ave. | Las Vegas, NV 89104
Phone: (775) 684-3911 | (702) 486-7923 | <https://detr.nv.gov> | Fax: (775) 684-6426 | Fax: (702) 486-7924

Current Employment Statistics ([CES](#))

Estimates for this section come from the Current Employment Statistics (CES) program sponsored by the Bureau of Labor statistics ([BLS](#)). Total nonfarm employment increased by 7,500 jobs from September to October, a growth rate of 0.5%. Since October 2021, total nonfarm employment increased by 55,500 jobs, or 3.9%. The largest employment increases in October, occurred in leisure and hospitality, and retail trade. For more state employment information, please visit our [Nevada Area Profile](#).

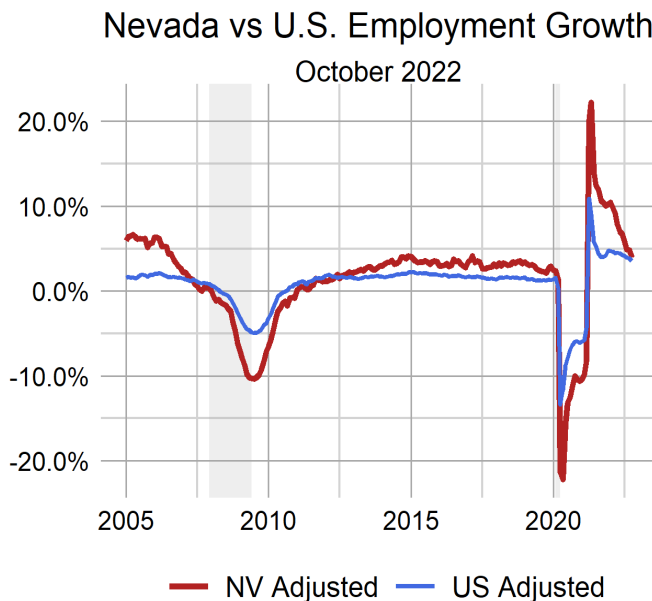
Las Vegas MSA seasonally adjusted total nonfarm employment witnessed an increase of 4,900 jobs (0.5%) from September to October. Compared to October 2021, total nonfarm employment saw an increase of 46,300 jobs (4.5%). Sector estimates are not adjusted for seasonality. To see more employment information, please visit our [Las Vegas Area Profile](#).

Reno MSA seasonally adjusted total nonfarm employment witnessed a decrease of 500 jobs (-0.2%) from September to October. Compared to October 2021, total nonfarm employment saw an increase of 7,300 jobs (2.9%). Sector estimates are not adjusted for seasonality. For additional employment information, please visit our [Reno Area Profile](#).

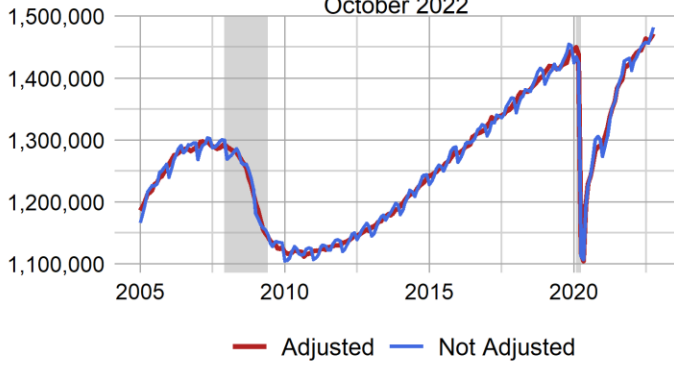
Carson City MSA seasonally adjusted total nonfarm employment realized an increase of 100 jobs (0.3%) from September to October. Compared to October 2021, total nonfarm employment saw an increase of 800 jobs (2.6%). Sector estimates are not adjusted for seasonality. For more employment information, please visit our [Carson City Area Profile](#).

For more information visit our [CES Page](#), see the summary tables at the end of the document, or check out our dashboards for a [CES summary](#) or [industry estimates](#) or all the [Area Profiles](#).

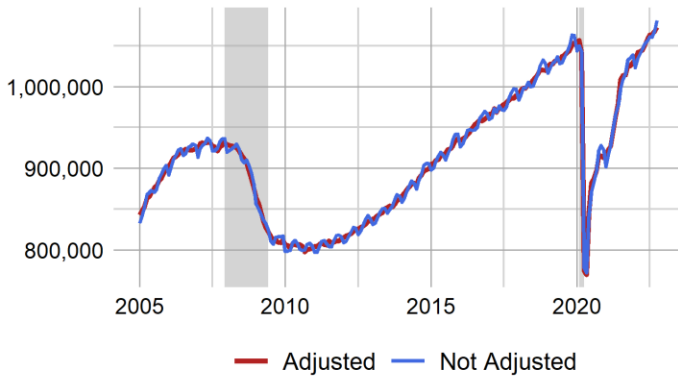
See more summary information on [Nevada's Labor Market](#) and the [U.S. Labor Market](#).



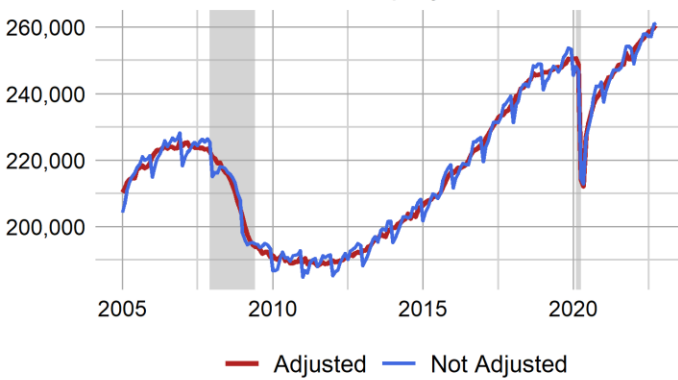
Nevada Employment



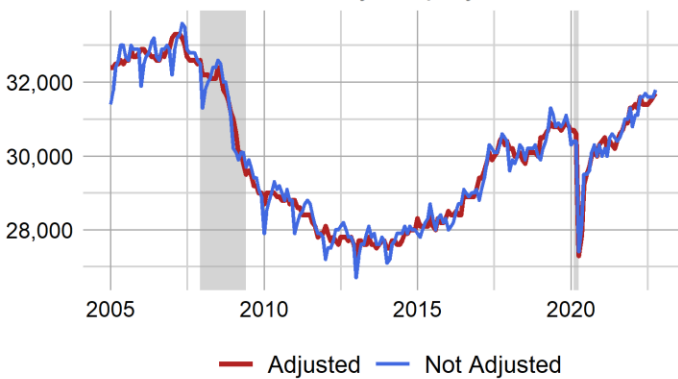
Las Vegas Employment



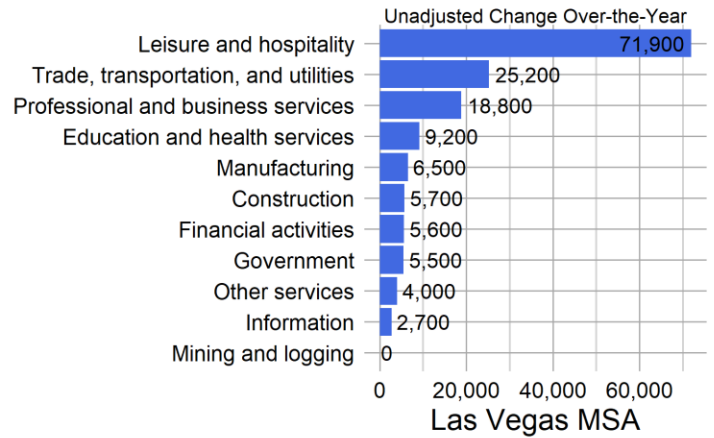
Reno Employment



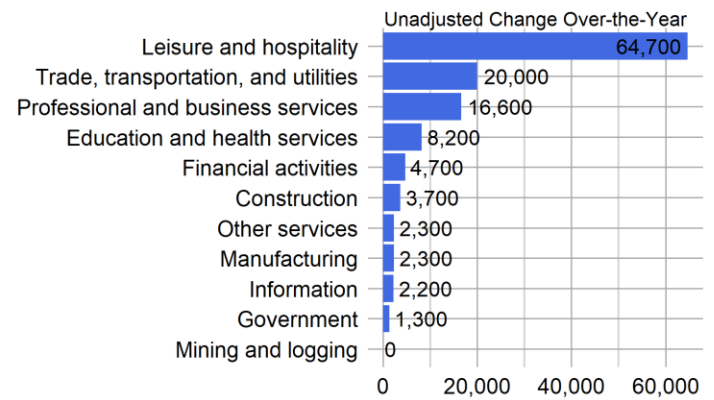
Carson City Employment



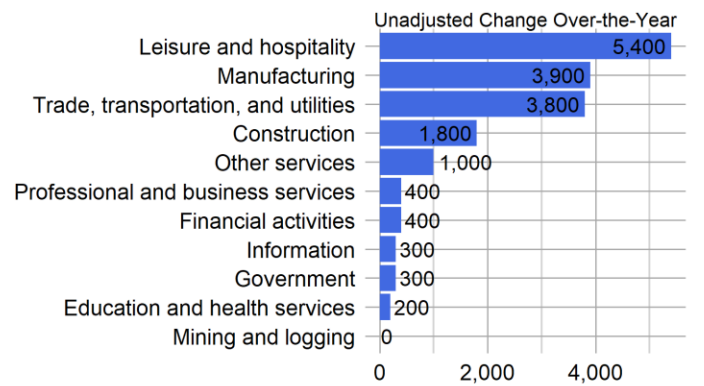
Nevada



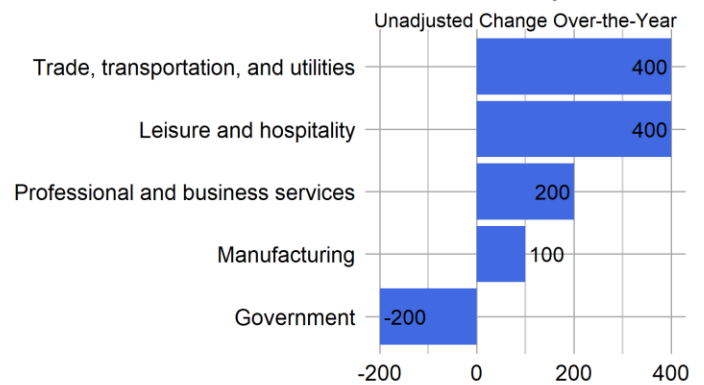
Las Vegas MSA



Reno MSA



Carson City MSA



Nevada & Area Seasonally Adjusted Employment Summary in (1000s)

areaname	Value	Change	1-Yr High	1-Yr Low	1-Yr High Chg	1-Yr Low Chg	3-Yr High	3-Yr Low	3-Yr High Chg	3-Yr Low Chg	All-Time High	All-Time Min
Nevada	1,471.8	7.5	1,471.8	1,416.3	19.8	-3.9	1,471.8	1,105.1	88.2	-322.2	1,471.8	609.8
Las Vegas - Paradise MSA	1,072.5	4.9	1,072.5	1,025.2	12.2	-1.0	1,072.5	769.6	74.9	-267.9	1,072.5	364.3
Reno - Sparks MSA	259.5	-0.5	260.0	250.5	3.4	-1.7	260.0	212.2	15.0	-34.8	260.0	142.9
Carson City MSA	31.7	0.1	31.7	30.9	0.4	-0.2	31.7	27.3	1.4	-3.3	33.3	21.1

Local Area Unemployment Statistics ([LAUS](#))

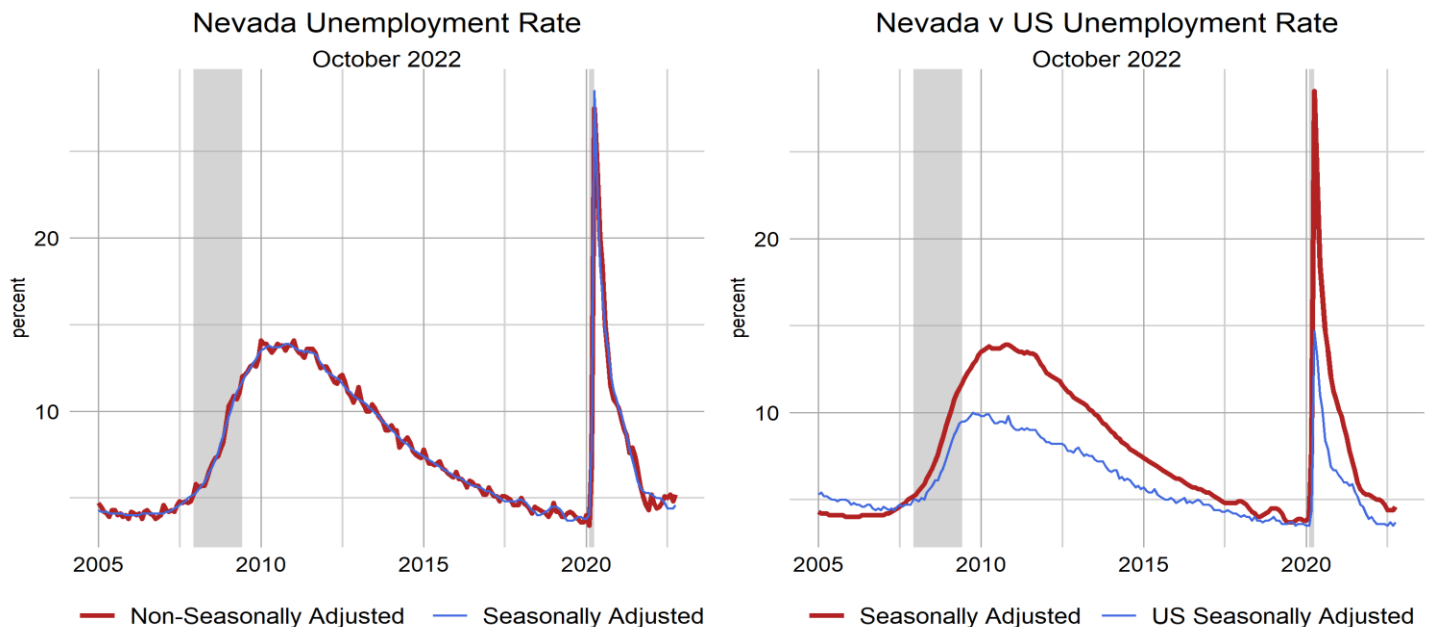
Figures for our unemployment estimates come from the Local Area Unemployment Statistics (LAUS) program sponsored by the ([BLS](#)). Nevada's unemployment rate was 4.6 percent in October, increased by 0.2 percentage point from 4.4 percent in September, and decreased by 0.8 percentage point from 5.4 percent in 2021, seasonally adjusted. The number of unemployed individuals increased by 4,021 from September for a current level of 71,303 people, which decreased by 8,719 unemployed people since 2021. The labor force in Nevada is currently 1,546,669 people, which increased by 9,758 people from September, and increased by 56,206 people since 2021.

Visit our [LAUS page](#) for more information on the labor force in Nevada, or check out our [dashboard](#) for a look at each area.

U.S. & Nevada Local Area Unemployment Statistics October 2022

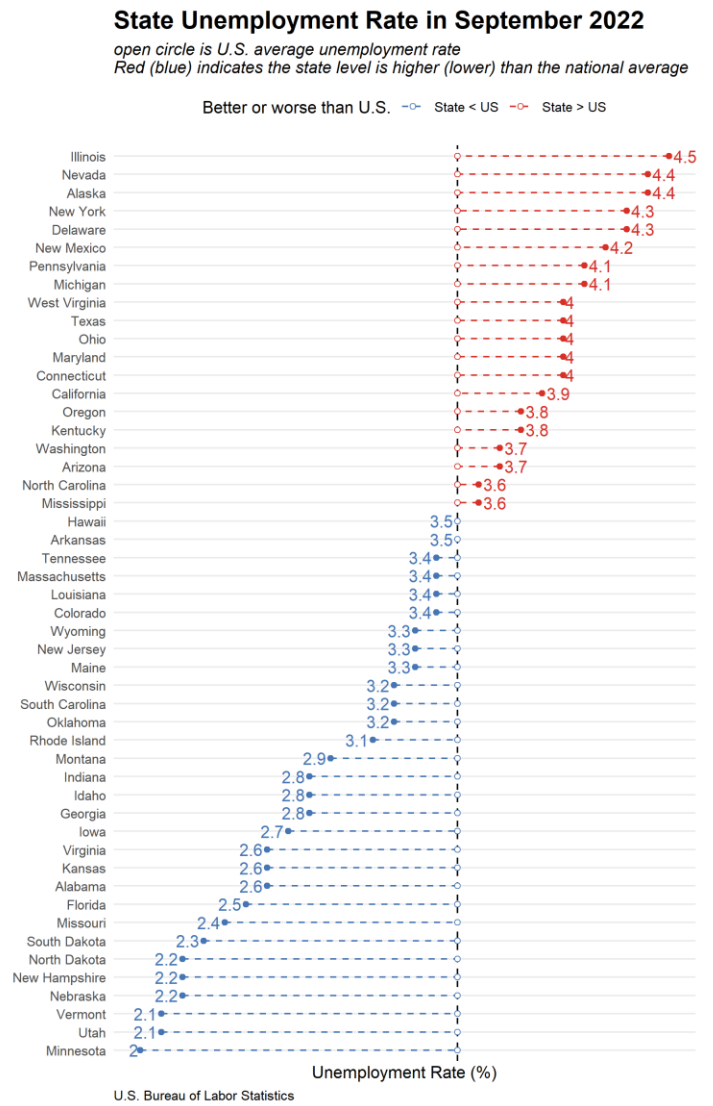
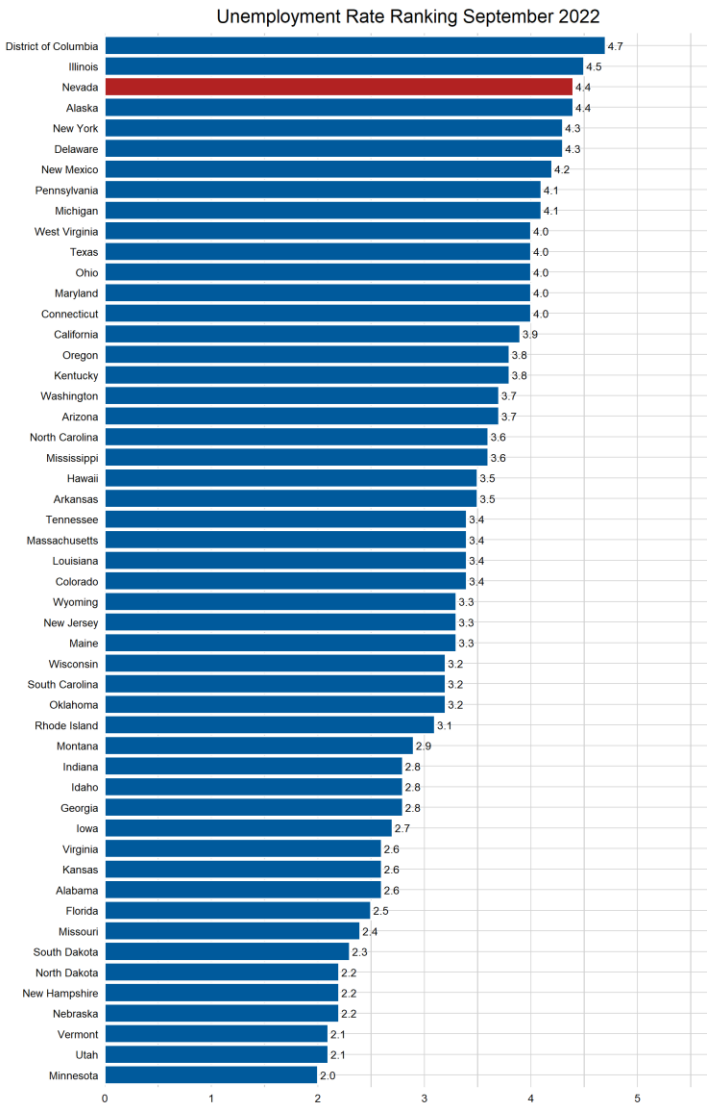
Area	Labor Force	Employed	Unemployed	Unemployment Rate	Labor Force Participation Rate	Employment Population Ratio
US						
U.S.	164,753,000	159,144,000	5,609,000	3.4	62.3	60.2
U.S. SA	164,667,000	158,608,000	6,059,000	3.7	62.2	60.0
State						
Nevada	1,560,314	1,479,825	80,489	5.2	61.4	58.3
Nevada SA	1,546,669	1,475,366	71,303	4.6	60.9	58.1

SA denotes seasonally adjusted data



Unemployment Rate State Rankings (Prior Month's Data)

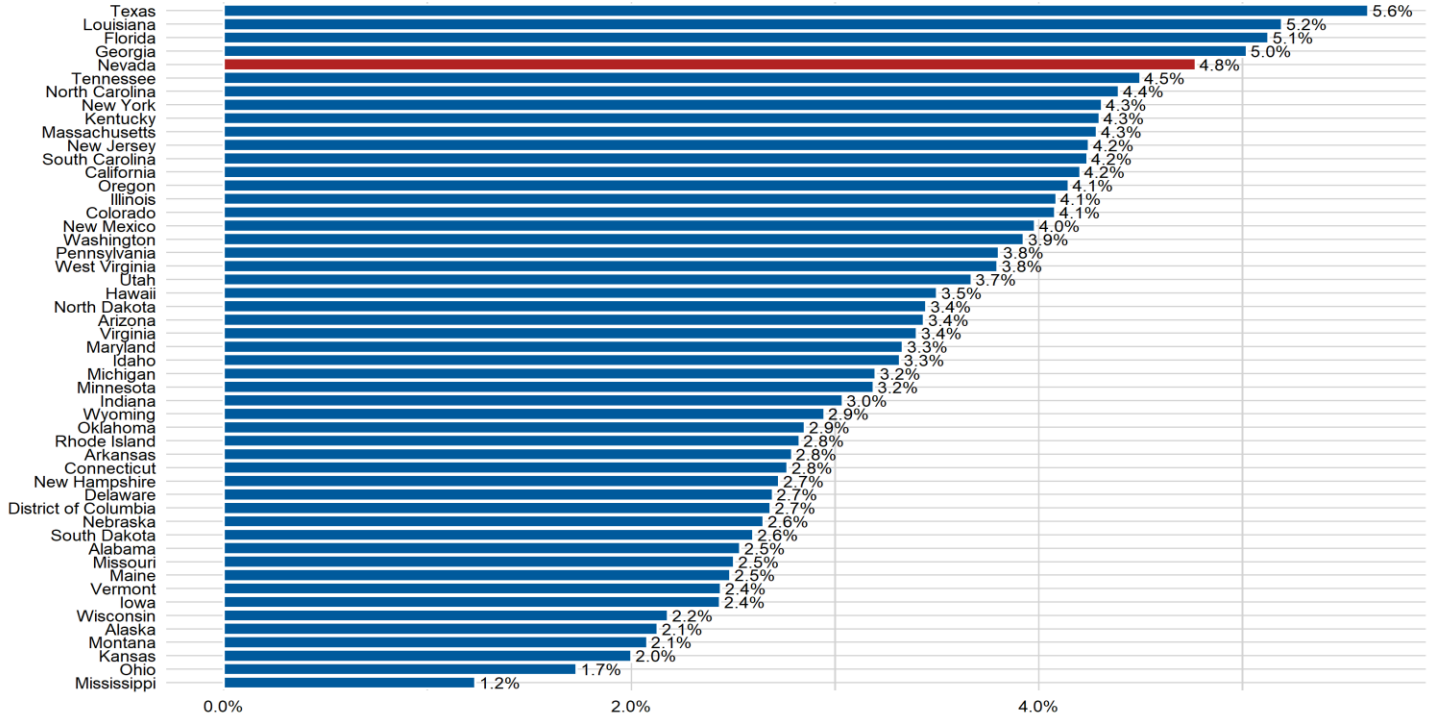
According to the Bureau of Labor Statistics, Nevada was tied with Alaska as the state with the 3rd highest rate of unemployment at 4.4 percent.



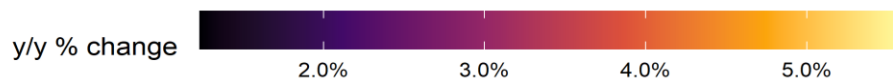
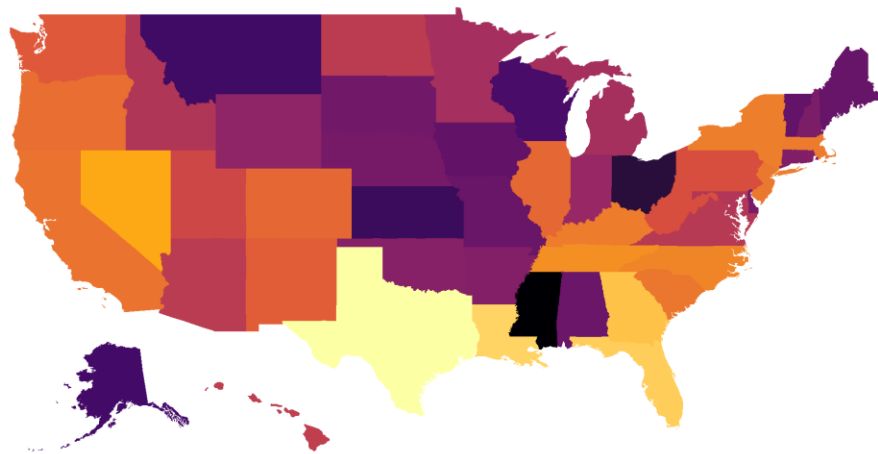
Employment State Rankings (Prior Month's Data)

According to the Bureau of Labor Statistics, Nevada experienced the fourth largest over-the-year employment growth in September at a figure of 4.8 percent.

Over the Year Employment Growth Rank by State in September 2022



Employment growth year-over-year
September

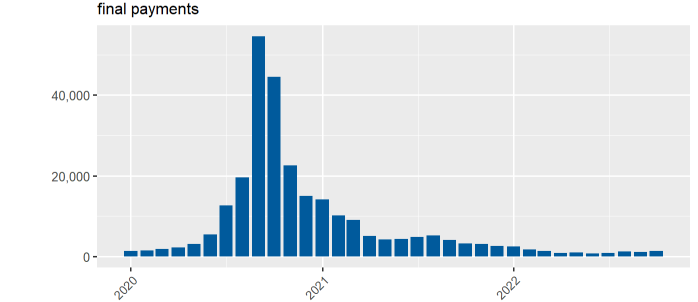
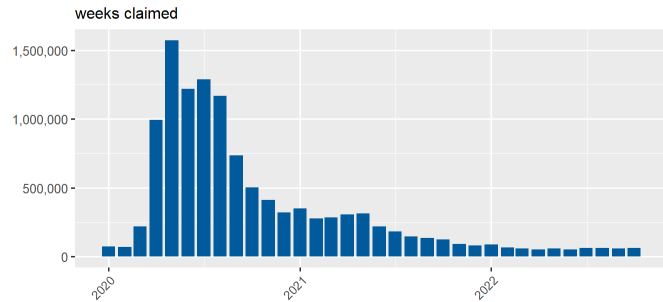
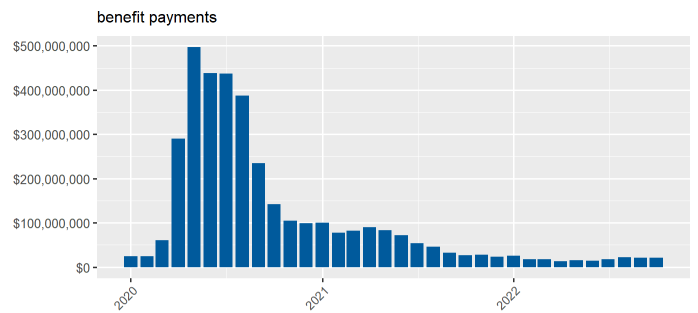
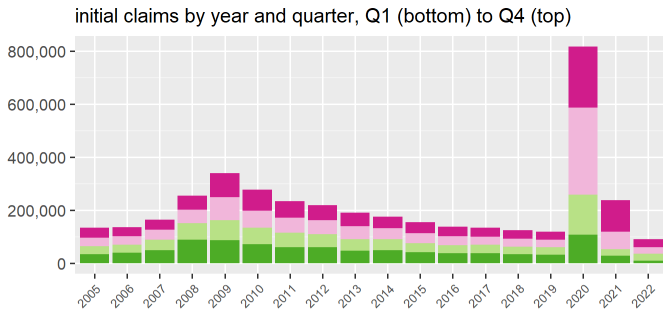
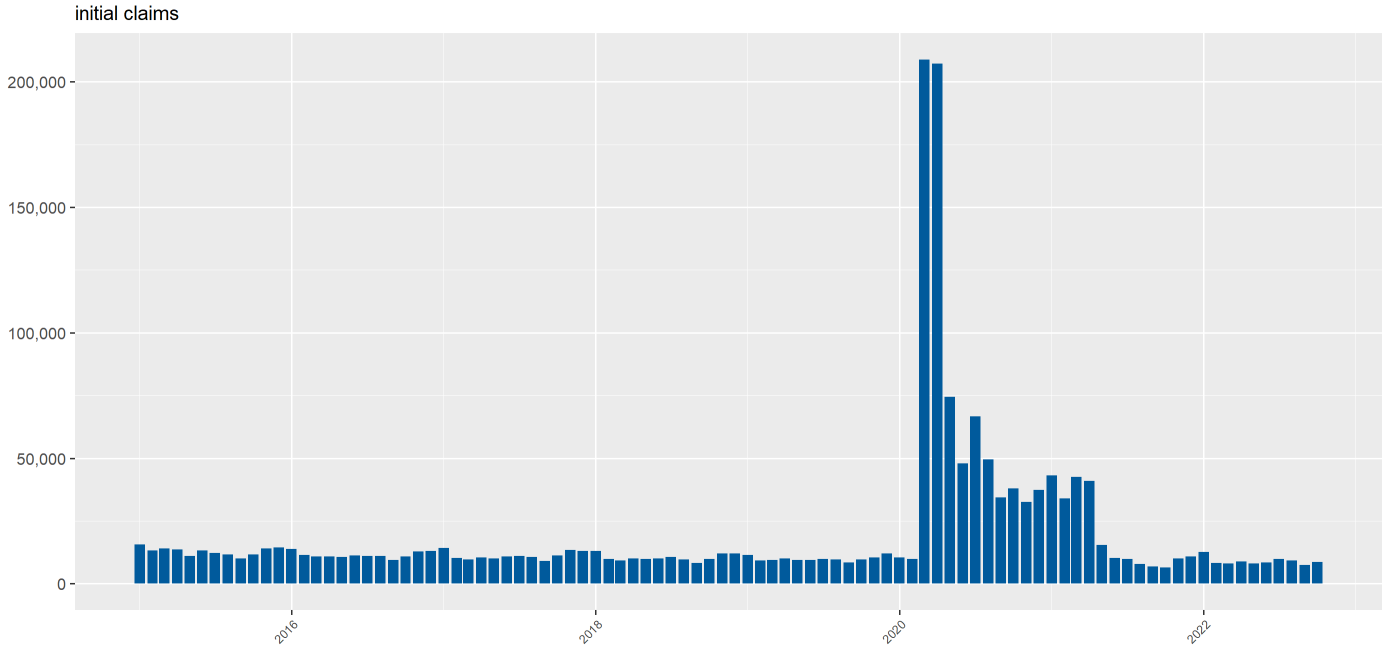


Source: U.S. Bureau of Labor Statistics (y/y)=Year-Over-Year

Unemployment Insurance

In October 2022, 8,658 initial claims for unemployment insurance were filed in Nevada, an increase of 1,127 claims, or about 15 percent, from September when there were 7,531 claims. This figure is significantly above that of October of 2021, which saw 6,538 claims.

State of Nevada Unemployment Insurance Activity

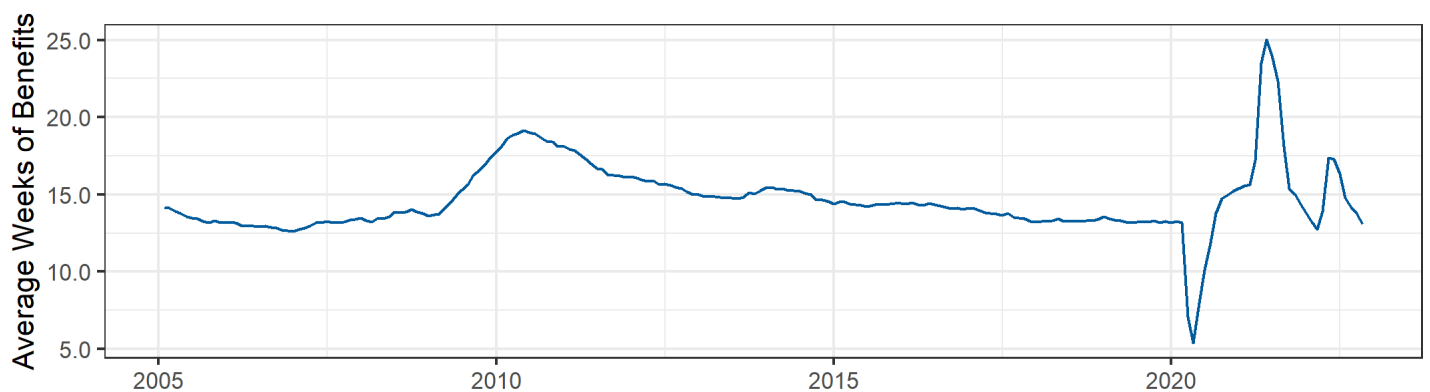
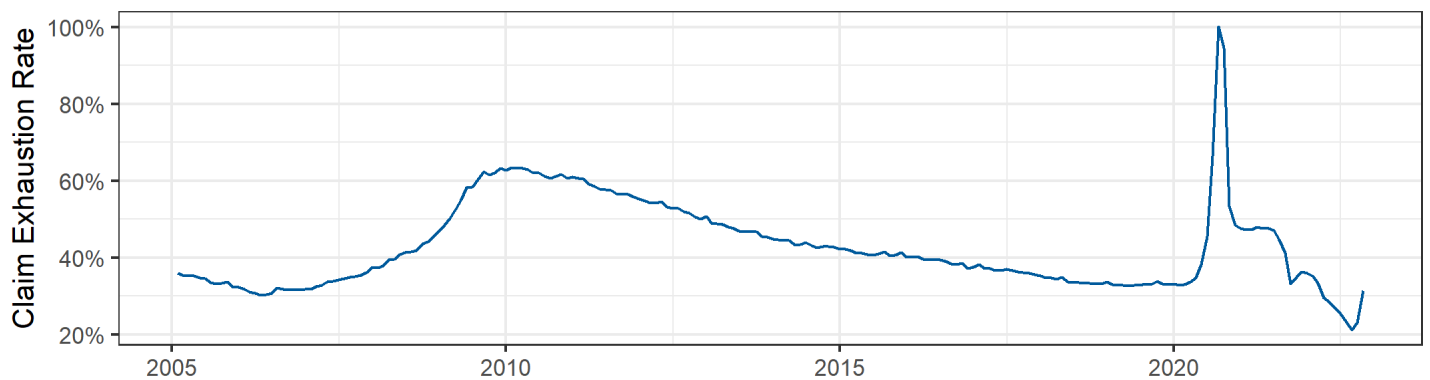


Over-the-year claims activity for Nevada’s regular program saw increases across most measures in October. The number of weeks compensated increased by 2,104 over the month, resulting in about \$21.6 million in benefit payments, an increase of 3.7 percent from September. First payments saw a slight decrease in October 2022, from 3,998 in September down to 3,922 (down 1.9 percent over the month). Final payments, also known as benefit exhaustions, increased to 1,309, up 13.5 percent from September.

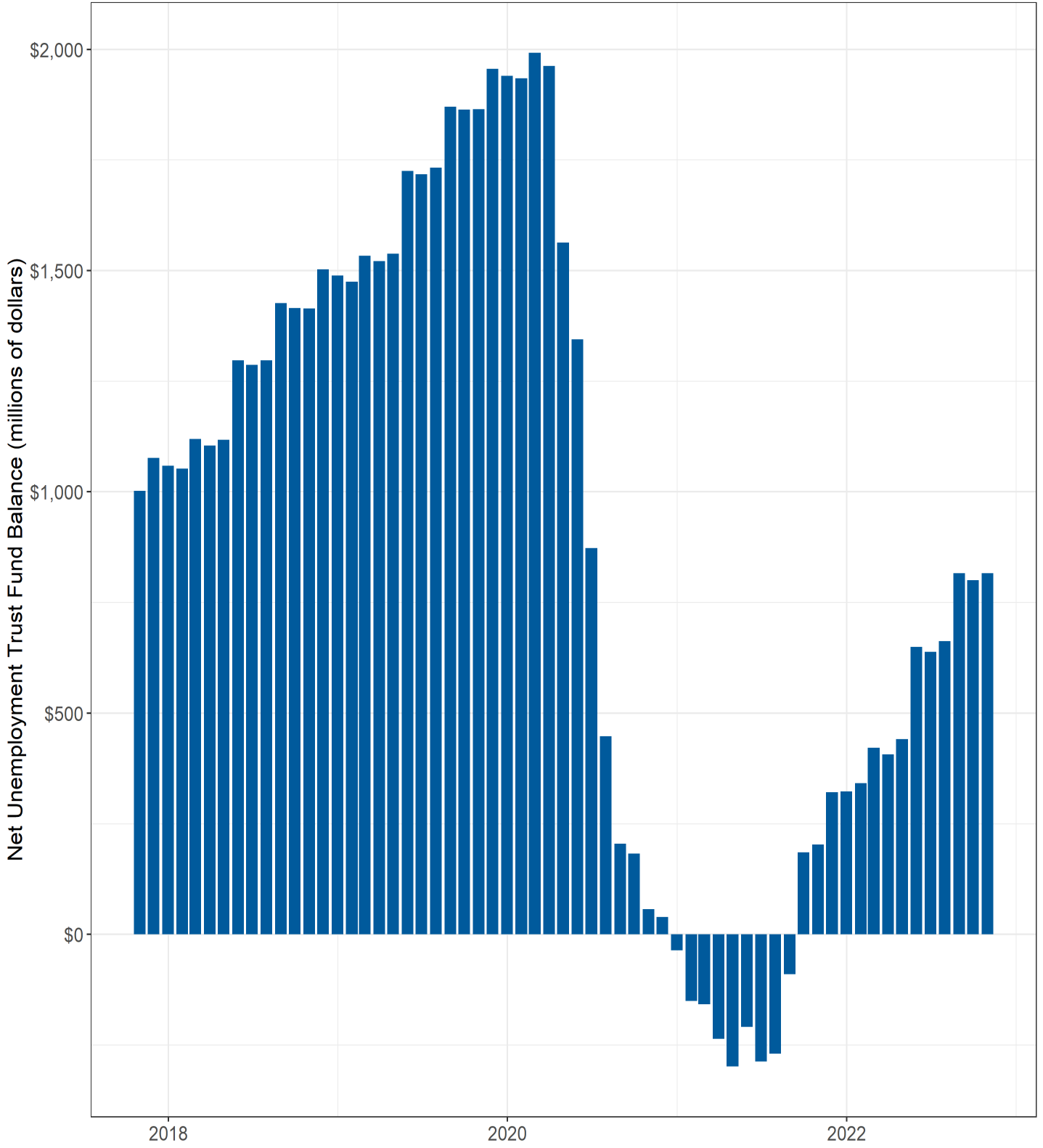
October 2022 Unemployment Insurance Activity

Measure	October 2022	October 2021	% change	September 2022	% change	12 month average
Initial Claims	8,658	6,538	32.4%	7,531	15.0%	9,188
Weeks Claimed	64,906	123,592	-47.5%	58,186	11.5%	66,869
Weeks Compensated	56,375	80,644	-30.1%	54,271	3.9%	54,323
Amount Compensated	\$21,550,042	\$26,450,625	-18.5%	\$20,778,418	3.7%	\$19,694,661
Weeks Compensated Total Unemployment	50,976	68,925	-26.0%	48,608	4.9%	47,493
Amount Compensated Total Unemployment	\$20,431,067	\$23,661,341	-13.7%	\$19,613,290	4.2%	\$18,321,133
First Payments	3,922	3,039	29.1%	3,998	-1.9%	3,629
Final Payments (Exhaustions)	1,309	3,170	-58.7%	1,153	13.5%	1,533
Average Weekly Benefit	\$400.80	\$343.29	16.8%	\$403.50	-0.7%	\$387.45
Average Duration (in weeks)	13.09	14.99	-12.7%	13.78	-5.0%	14.57
Exhaustion Rate	31.44%	34.86%	-9.8%	23.04%	36.4%	29.18%

Source: ETA 5159



The Trust Fund currently has an \$816 million positive balance as of October of 2022.



Nevada Unemployment Services Available

DETR serves all Nevada citizens by being the state's lead workforce development agency. DETR consists of divisions that offer workforce related services, job placement and training, services for people with disabilities, investigation of claims of discrimination, unemployment insurance benefits, and labor market data.

For current updates from the department and to find resources available, please visit:

<https://detr.nv.gov/coronavirus>

To file an unemployment insurance claim or for additional information, please visit <http://ui.nv.gov/>

To report unemployment fraud, please visit:

https://detr.nv.gov/Page/Unemployment_Fraud

Prepared by the Research and Analysis Bureau with contributions from: Dave Schmidt, Jordan Ambrose, Dionny McDonnell, Marianne Segurson, and Tim Wilcox.

Special thanks to all the R and RStudio developers that built the packages to make this possible. Packages used in this report include tidyverse, DBI, tidyquant, data.table, scales, gt, kableExtra, ggthemes, cowplot, gridExtra, RcppRoll, viridis, fiftystater, ggforce, knitr, flexdashboard, lubridate, plotly, patchwork, reshape2.

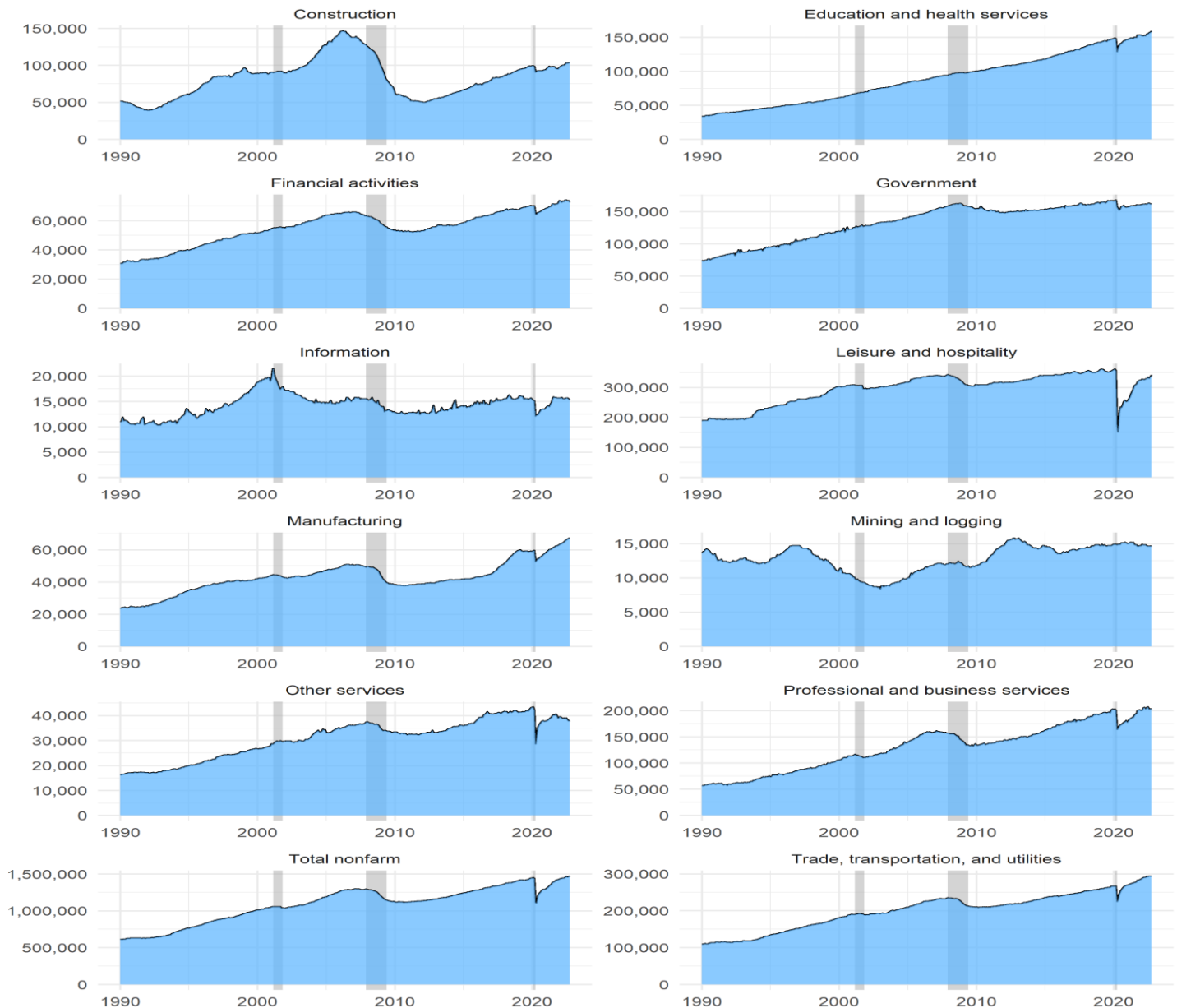
This workforce product was funded by a grant awarded by the U.S. Department of Labor's Employment and Training Administration. The product was created by the recipient and does not necessarily reflect the official position of the U.S. Department of Labor. The U.S. Department of Labor makes no guarantees, warranties, or assurances of any kind, express or implied, with respect to such information, including any information on linked sites and including, but not limited to, accuracy of the information or its completeness, timeliness, usefulness, adequacy, continued availability, or ownership. This product is copyrighted by the institution that created it. Internal use by an organization and/or personal use by an individual for non-commercial purposes is permissible. All other uses require the prior authorization of the copyright owner.

CES Summary Tables

Seasonally adjusted estimates are used to show underlying economic trends by accounting for regularly seen seasonal patterns, and the result is smoother estimates. They are found by taking the difference of the unadjusted estimate and the expected seasonal movement.

Nevada Nonfarm Jobs Over the Month Change			
September 2022 - October 2022			
Area	Unadjusted Change	Expected Seasonal Movement	Seasonally Adjusted Change
U.S.	1,172,000	911,000	261,000
Nevada	14,800	7,300	7,500

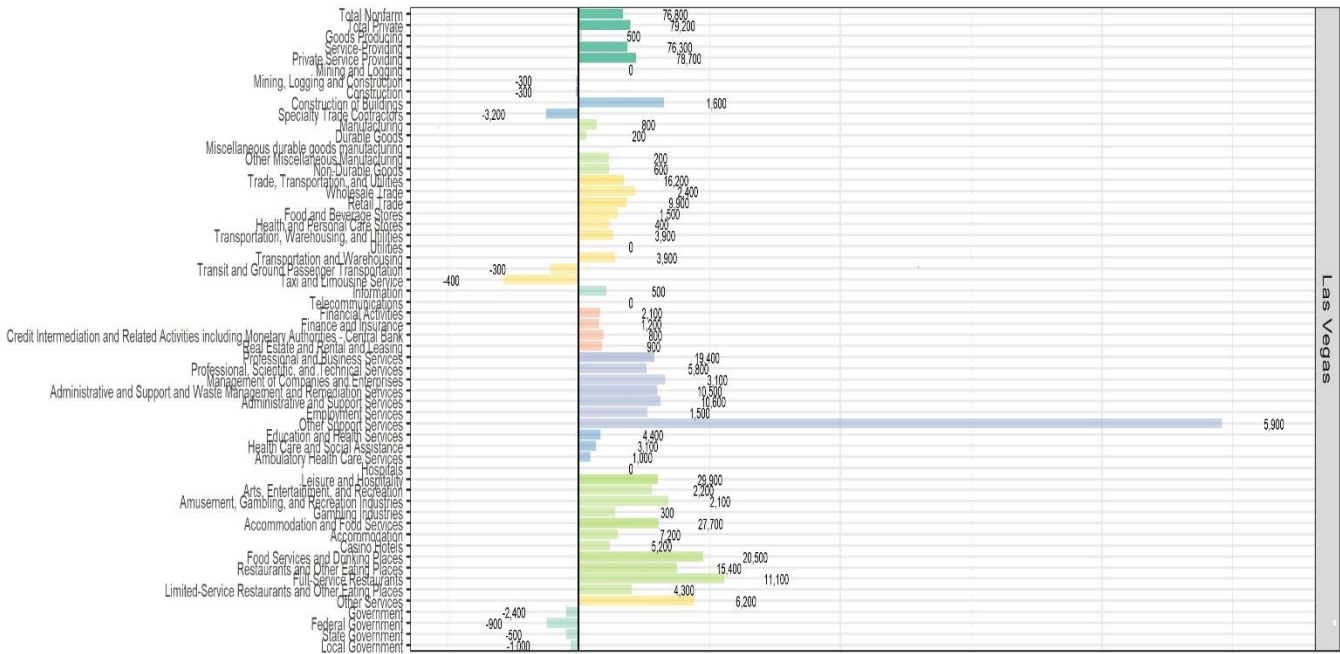
State of Nevada Industry Employment
seasonally adjusted



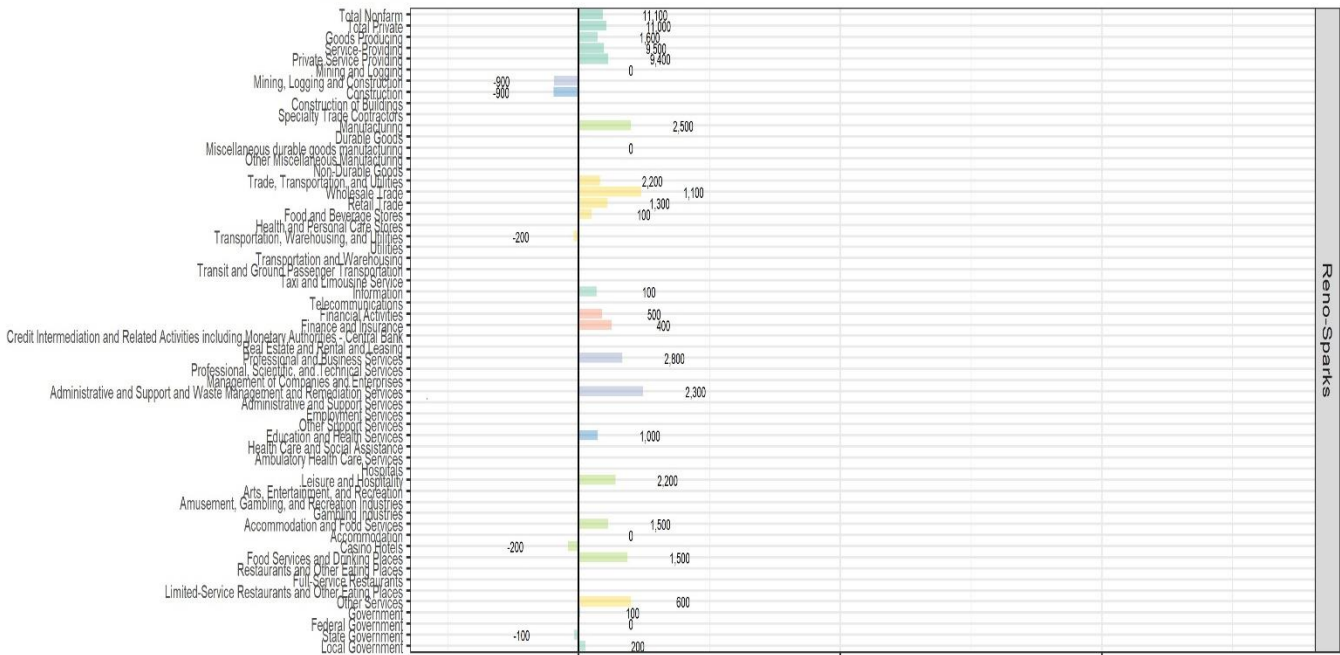
Source: Bureau of Labor Statistics, Current Employment Statistics

Change in Employment, October 2021 to October 2022

Bars show percent change, labels show change in number of jobs



Las Vegas



Reno Sparks

Annual Percent Change