

MEDIA CONTACT:
ROSA MENDEZ
rcmendez@nvdetr.org
o (702) 486.7991
c (702) 376.5384



RESEARCH AND ANALYSIS BUREAU

BRIAN SANDOVAL
GOVERNOR

DON SODERBERG
DIRECTOR

DAVID SCHMIDT
CHIEF ECONOMIST

APRIL SUB-STATE PRESS RELEASE

For Immediate Release

May 22, 2018

Slight Employment Increase Persists in Nevada Metro Areas as State's Industry Growth Continues

CARSON CITY, NV – According to the Department of Employment, Training and Rehabilitation's (DETR) April 2018 economic report, job growth continued throughout the Silver State in April with slight increases in employment in all three metropolitan areas. Year-over-year employment increase persists in the State as a whole, while unemployment remained constant at 4.9%.

"This latest data shows the economic consistency in the labor force statewide released last week, with that growth distributed throughout the state. While this growth was fastest in Reno at 4.2 percent, Las Vegas still added over 29,000 jobs over the year with growth in manufacturing and construction industries. Unemployment continues to show improvement, with the unemployment rate down in 12 of 17 counties and initial claims for unemployment benefits down in 13 of 17 counties over the year," said David Schmidt, Chief Economist, for Nevada's Department of Employment, Training & Rehabilitation.

Additional April 2018 Economic Report Highlights:

- Job Growth In April (Seasonally-Adjusted):
 - Las Vegas gained 1,600 jobs over the month and 30,500 over the year (3.2 percent).
 - Reno added 800 jobs over the month and 9,500 over the year (4.1 percent).
 - Carson City was up 800 jobs over the year (2.7 percent).
- Unemployment:
 - Las Vegas: five percent; down 0.3 percentage point from a year ago
 - Reno: 3.9 percent; down 0.4 percentage point from a year ago
 - Carson City: 5.2 percent; down 0.1 percentage point from a year ago
 - April unemployment rates ranged from 2.9 percent (Eureka) to six percent (Lyon).
 - Elko, Eureka, Humboldt, and Washoe counties all had unemployment rates below four percent, the lowest such rates in the state.
- Las Vegas and Reno continue to realize record highs in employment.
- Information for 2016 shows personal income in Nevada reached \$119 billion, up 1.7 percent from a year ago.
- Las Vegas (up 2.3 percent) and Reno's (up 1.9 percent) average personal income growth has exceeded that for the State in 2016.
- The Reno-Sparks area was the top goods exporter in Nevada in 2016, shipping \$2.4 billion worth of goods abroad.
- Washoe (+3,000) experienced the largest increase in job posting volume over last year, totaling 15,200 ads year-to-date.

- # # # -



NevadaWorkforce.com

@NVLaborMarket

P: (775) 684 - 0450



ABOUT THE RESEARCH AND ANALYSIS BUREAU

The Research and Analysis Bureau is Nevada's premier source for labor market information. A part of DETR, the Bureau is responsible for creating, analyzing, and reporting Nevada's labor market information, in cooperation with the United States Bureau of Labor Statistics (BLS).

Visit us <http://www.nevadaworkforce.com> and Follow us on Twitter: <http://www.twitter.com/NVLabormarket>



DETR is comprised of the Employment Security Division, Equal Rights Commission, Rehabilitation Division, and the Research and Analysis Bureau. DETR oversees the Nevada JobConnect System to provide training and job placement services to job seekers and to assist employers in hiring practices. It also supports economic development efforts through improving Nevada's workforce.



NevadaWorkforce.com

 @NVLaborMarket

P: (775) 684 - 0450



NEVADA SUB-STATE LABOR MARKET OVERVIEW

April 2018

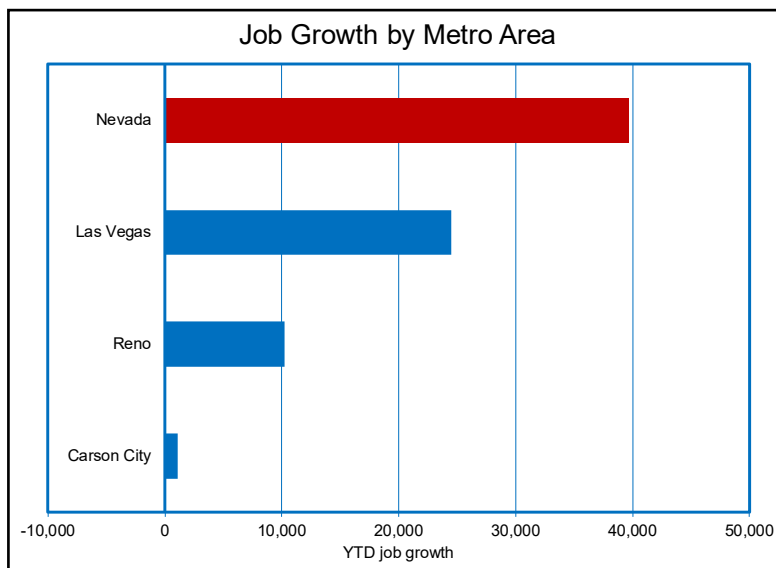
Statewide, seasonally adjusted employment increased by 4,300 jobs in April, relative to March. As for Nevada's major population centers, mixed gains were realized this month. Las Vegas employment saw a seasonally-adjusted increase of 1,600 jobs, the result of increasing by 6,100 jobs when only 4,500 were expected to be added. Reno employment realized a seasonally-adjusted increase of 800 jobs, the result of increasing by 2,400 jobs when 1,600 were expected to be gained. Carson

Nevada Nonfarm Jobs: March - April Change

	Unadjusted Change	Expected Seasonal Movement	Seasonally Adjusted Change
Las Vegas	6,100	4,500	1,600
Reno	2,400	1,600	800
Carson City	200	300	-100

City saw a seasonally-adjusted decrease of 100 jobs, the result of increasing by only 200 jobs when 300 were expected to be added.

Year-over-year employment increased in the State as a whole and in all metropolitan statistical areas (MSAs) this month. Statewide, job growth was strong and increased by 3.4 percent, which correlates to 45,300 new jobs added since April of last year. In Las Vegas, jobs have increased by 30,500 year over year, which correlates to a growth rate of 3.2 percent. Specifically, goods-producing industries added 8,600 jobs to payrolls while service-providing industries added 20,700¹. In Reno, 9,500 jobs were added over the



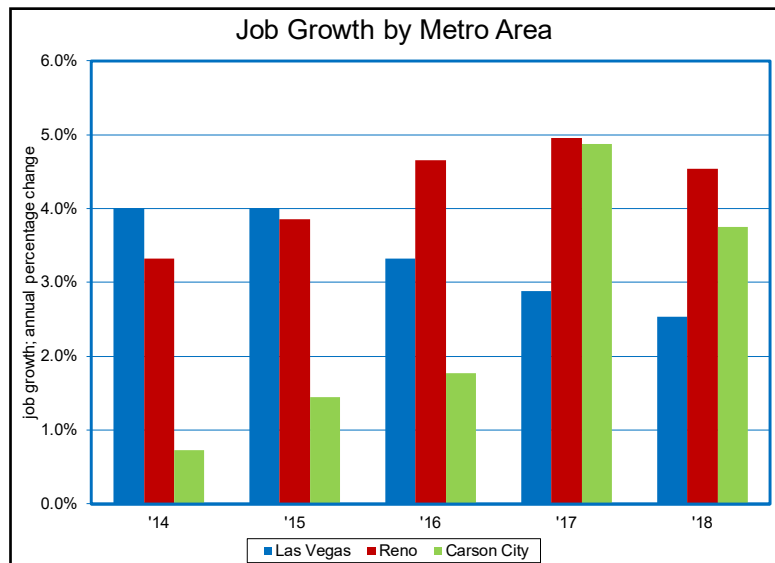
¹ References to total MSA employment are adjusted for seasonality, whereas references to goods-producing and service-providing industries are not.

year, translating to a growth rate of 4.1 percent. That area saw an increase of 3,700 goods-producing jobs and 6,000 service-providing jobs. In Carson City, 800 jobs were added relative to last year, resulting in a growth rate of 2.7 percent. That area saw an increase of 400 goods-producing jobs and 400 service-providing jobs.

The Bureau of Economic Analysis (BEA) provides us with a measure of real personal income (chained 2009 dollars). Personal income is the income received by all persons from all sources: net earnings, property income, and personal current transfer receipts. It is one of the broadest measures of economic activity at the State and sub-State levels.

Information for 2016 shows personal income in Nevada reached \$119 billion, up 1.7 percent from a year ago. The Silver State's two largest metropolitan areas, Las Vegas and Reno, have both experienced increases over this period.

Las Vegas and Reno's average personal income growth has exceeded that for the State in 2016. The Las Vegas area's



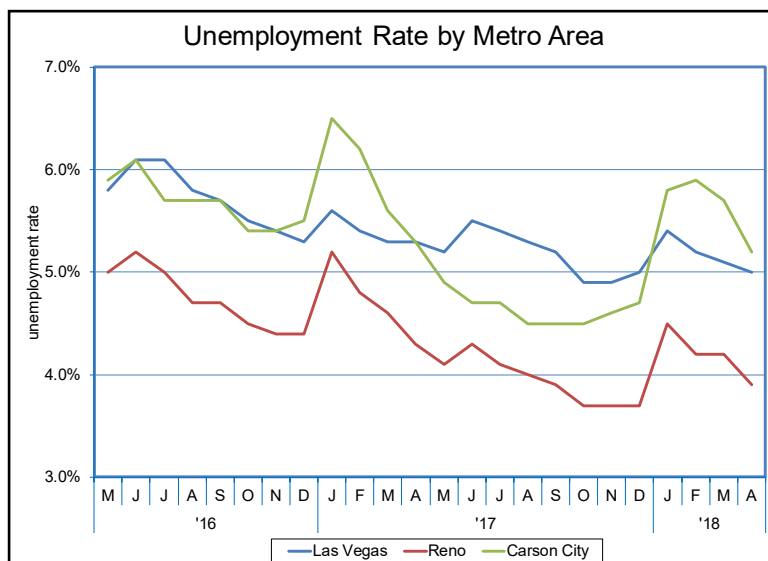
personal income is up 2.3 percent from 2015, totaling \$84 million. The Reno area's personal income growth is up 1.9 percent from 2015, reaching \$20 million.

Carson City was the only MSA to realize an over the year decline in personal income in 2016. That area's personal income declined by 1.5 percent, totaling two million dollars.

The International Trade Administration Metropolitan Export Series contains data on merchandise trade exports to the world from Nevada's MSAs.

The Reno-Sparks area was the top goods exporter in Nevada in 2016, shipping \$2.4 billion worth of goods abroad. The area's top export sector was computer/electronic product manufacturing (51.2 percent of exports). The Reno-Sparks area has been growing steadily since 2005 with a slight decline in 2015 exports.

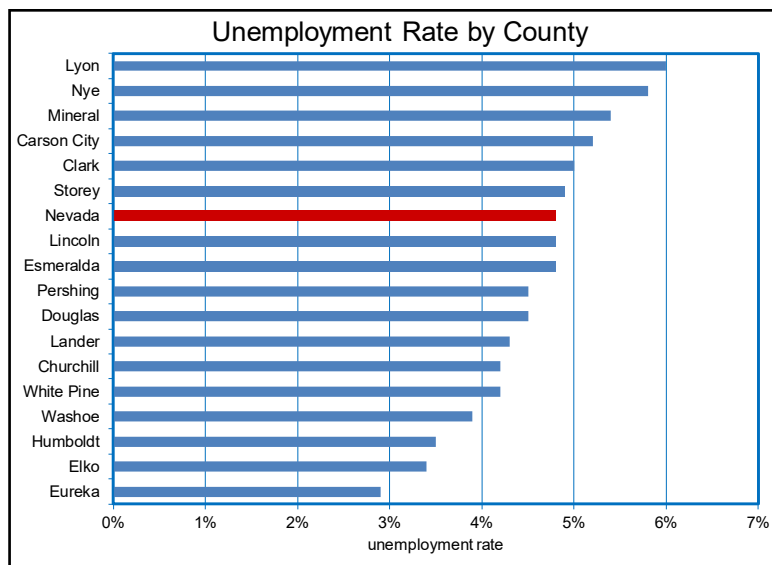
The other major metro area exporter was Las Vegas-Henderson-Paradise, shipping exports valued at \$2.3 billion abroad. The area's top export sector in 2016 was miscellaneous manufacturing (40.1 percent of exports). Las Vegas saw



a significant decline in exports in miscellaneous manufacturing in 2016. Las Vegas has struggled to regain miscellaneous manufacturing jobs from its pre-recessionary peak, explaining the decline of exports seen in that industry.

In 2016, Carson City shipped \$1.28 million in exports and the area's top export sector was transportation equipment manufacturing (26.2 percent of exports). Since 2005, Carson City has been relatively slow in terms of growth.

Unemployment rates decreased in all of the State's major population centers on a month-over-month and year-over-year² basis in April. In Las Vegas the unemployment rate is at five percent, down 0.1 percentage point from March, and down 0.3 percentage point from April last year. Reno's unemployment rate is at 3.9



percent, down 0.3 percentage point from March, and down 0.4 percentage point from this time last year. The unemployment rate in Carson City is at 5.2 percent, down 0.5 percentage point from March, and down 0.1 percentage point from April last year.

Unemployment rates declined on an over-the-year basis in 12 of 17 counties this month. Rate declines ranged from 0.1 percentage point (White and Carson City) to 0.7 percentage point (Nye). Esmeralda realized the largest rate increase of 0.9 percentage point this month. All counties remain at or below six percent unemployment in April with 12 counties below five percent. Eureka, at 2.9 percent, is home to the State's lowest unemployment rate. Elko, Humboldt, and Washoe (all below four percent) also maintain relatively low unemployment rates. Lyon, at six percent, has the highest unemployment rate in the Silver State this month.

Statewide, initial claims for Unemployment Insurance (UI) benefits were down

Unemployment Insurance Initial Claims By County			
	April 2018 (Year-to-Date)		Change
	2018	2017	
Clark	36,601	37,750	-1,149
Washoe	6,078	6,989	-911
Carson City	1,002	996	6
Elko	477	518	-41
Douglas	485	629	-144
Lyon	955	982	-27
Humboldt	164	187	-23
Nye	413	483	-70
Churchill	315	324	-9
Lander	61	61	0
Lincoln	26	34	-8
White Pine	90	113	-23
Mineral	54	58	-4
Pershing	55	42	13
Eureka	11	12	-1
Esmeralda	13	12	1
Storey	26	42	-16

*County level totals are not directly comparable to Statewide monthly totals due to reporting differences.

² The State's seasonally adjusted unemployment rate is 4.9 percent in April, unchanged from March and down from 5.1 percent in April 2017. Unemployment rates for the State's metropolitan areas and counties reported here are not adjusted for seasonality. Hence, comparisons to the State's seasonally adjusted rate should be avoided. Legitimate comparisons, however, can be made to the State's unadjusted rate – 4.8 percent in April, down from five percent in March and down from 5.1 percent in April 2017.

5.4 percent through the first four months of the year, when compared to the same period last year. This has elicited declines in 13 of Nevada's 17 counties. Of Nevada's three largest counties, Clark County experienced the largest nominal decline, with a decrease of 1,100 claims, or three percent. Washoe County saw the largest percentage decline in claims activity, down 13 percent, with a decrease of just over 900 claims over the year. Carson City, the State's smallest metropolitan statistical area, held steady this month.

Douglas County realized a decline of just over 140 claims, for a decrease of nearly 23 percent. That area realized the largest decrease in claims out of all of Nevada's micropolitan statistical areas. The only county to experience a significant increase in initial claims was Pershing, with just over ten more initial claims through April. Four of Nevada's smaller counties held steady this month, including Esmeralda, Eureka, Mineral, and Lander.

Year-to-date online job posting activity is down in 13 of 17 counties in April³. Washoe (+3,000) experienced the largest increase in ad volume over last year, totaling 15,200 ads year-to-date. This gain is likely the result of a ramp-up in hiring at the Tahoe Regional Industrial Center, a large industrial park nearby. Clark has seen the second largest increase in ad volume over last year (+900), totaling 50,300 ads year-to-date. Nye (+20) and Eureka (+20) are the only other counties who saw increases in ad volume over last year this month. Carson City has realized the largest decrease of ads (-900) over last year, totaling 2,500 ads through April of this year. Despite job posting volume being down in many of Nevada's smaller counties, Statewide posting activity is up over the year and continues to show improvement.

Online Job Posting Activity by County			
	April 2018 (Year-to-Date)		Change
	2018	2017	
Washoe	15,215	12,230	2,985
Clark	50,274	49,362	912
Eureka	124	104	20
Nye	970	952	18
Pershing	149	156	-7
Esmeralda	132	141	-9
Lander	149	161	-12
Mineral	243	260	-17
Storey	53	72	-19
Lincoln	243	267	-24
Lyon	840	952	-112
Humboldt	534	671	-137
White Pine	439	646	-207
Churchill	424	718	-294
Elko	2,004	2,342	-338
Douglas	1,055	1,584	-529
Carson City	2,465	3,371	-906

³ Online job postings are obtained through DETR's Silver State Solutions initiative. Online job posting volume does not necessarily correlate with the level of job openings or hiring. Internal company hiring and union hiring are often not captured by online ads. High ad volume often occurs for occupations/industries that are having difficulty finding qualified candidates, high turnover positions/recurring openings, or when companies are building large candidate pools. Online job postings should only be used with caution when developing/analyzing time series trends due to the constant changes in the rate of online advertising usage and in the methods used for collecting the data.



Nevada Sub-State Labor Market Briefing: April 2018

Special Topics

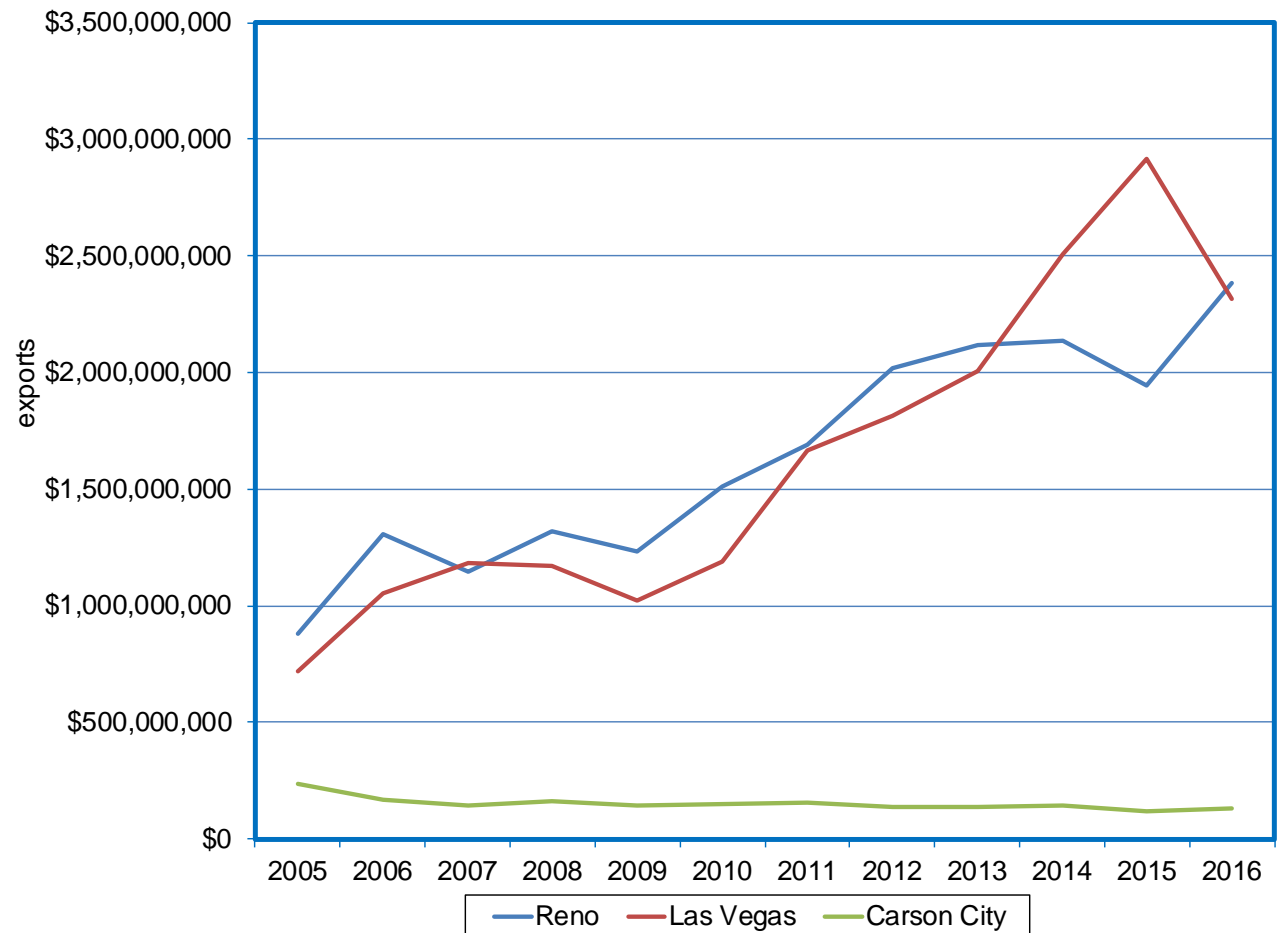


Reno-Sparks Top Goods Exporter in Nevada in 2016

The Reno-Sparks area's top export sector: computer/electronic product manufacturing (51.2% of exports)

The Las Vegas area's top export sector: miscellaneous manufacturing (40.1% of exports)

Carson City's top export sector: transportation equipment manufacturing (26.2% percent of exports)



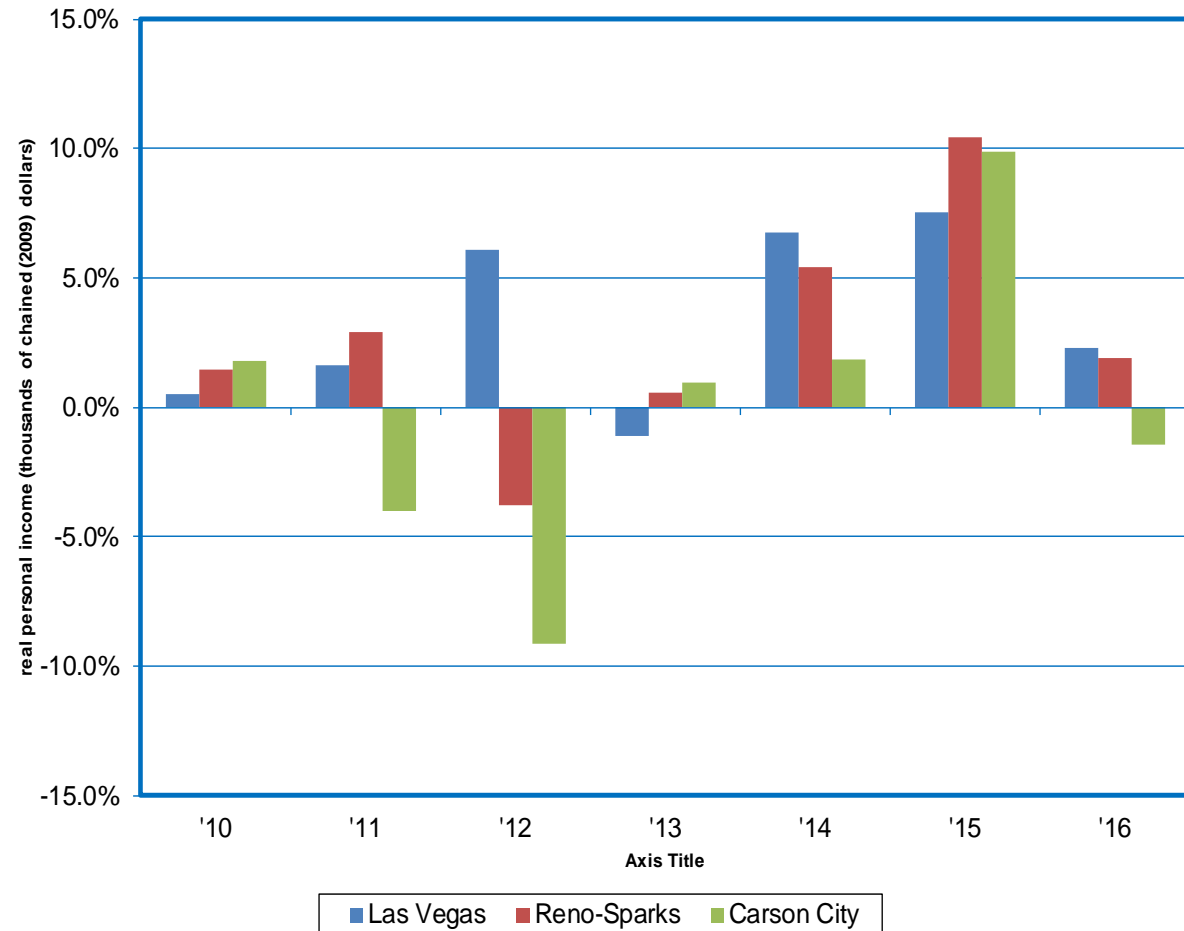
Personal Income on the Rise in Nevada's Largest Metropolitan Areas

In 2016, personal income in Nevada reached \$119 billion, up 1.7 percent from a year ago.

Las Vegas average personal income growth up 2.3 percent from a year ago. 2016 totals reached 84 million.

Reno average personal up 1.9 percent from a year ago. 2016 totals reached 20 million.

Carson City personal income growth has declined 1.5 percent from a year ago.





NEVADA

Employment & Unemployment

April 2018

Employment Growth:

(Employment in thousands)

	M/M	Y/Y	Y/Y%
Nevada	4.3	45.3	3.4%
Nevada (Not Seasonally Adjusted)	9.7	43.0	3.2%
Las Vegas MSA	1.6	30.5	3.2%
Reno\Sparks MSA	0.8	9.5	4.1%
Carson City MSA	-0.1	0.8	2.7%

Unemployment Rates:

Nevada (Seasonally Adjusted)	4.9%
Nevada	4.8%
Las Vegas MSA	5.0%
Reno\Sparks MSA	3.9%
Carson City MSA	5.2%

Employment estimates are produced by the Current Employment Statistics program.

Labor Force estimates are produced by the Local Area Unemployment Statistics program.

Research and Analysis Bureau, Nevada Department of Employment, Training and Rehabilitation operates these programs in cooperation with the U.S. Department of Labor, Bureau of Labor Statistics.

Telephone (775) 684-0450

Nevada Labor Force Summary

(Estimates In Thousands)

LABOR FORCE SUMMARY		Apr-18	Apr-17	CHANGE	% CHANGE	Mar-18
NEVADA STATEWIDE Seasonally Adjusted						
	LABOR FORCE	1488.8	1455.1	33.7	2.3%	1484.9
	EMPLOYMENT	1415.7	1380.3	35.4	2.6%	1411.9
	UNEMPLOYMENT	73.1	74.8	-1.7	-2.3%	73.0
	UNEMPLOYMENT RATE	4.9%	5.1%	-----	-----	4.9%
NEVADA STATEWIDE Non Seasonally Adjusted						
	LABOR FORCE	1493.5	1452.6	40.9	2.8%	1494.4
	EMPLOYMENT	1422.0	1378.4	43.6	3.2%	1420.2
	UNEMPLOYMENT	71.5	74.2	-2.7	-3.6%	74.2
	UNEMPLOYMENT RATE	4.8%	5.1%	-----	-----	5.0%
Las Vegas-Paradise MSA Includes Clark County						
	LABOR FORCE	1097.3	1064.5	32.8	3.1%	1094.7
	EMPLOYMENT	1042.4	1007.9	34.5	3.4%	1038.4
	UNEMPLOYMENT	54.9	56.6	-1.6	-2.9%	56.3
	UNEMPLOYMENT RATE	5.0%	5.3%	-----	-----	5.1%
Reno-Sparks MSA Includes Washoe and Storey Counties						
	LABOR FORCE	247.7	238.4	9.3	3.9%	247.4
	EMPLOYMENT	238.1	228.2	9.9	4.3%	237.0
	UNEMPLOYMENT	9.6	10.2	-0.6	-6.0%	10.4
	UNEMPLOYMENT RATE	3.9%	4.3%	-----	-----	4.2%
Carson City MSA						
	LABOR FORCE	26.2	25.4	0.8	3.3%	26.3
	EMPLOYMENT	24.9	24.1	0.8	3.4%	24.8
	UNEMPLOYMENT	1.4	1.3	0.0	2.1%	1.5
	UNEMPLOYMENT RATE	5.2%	5.3%	-----	-----	5.7%

UNEMPLOYMENT RATES BASED ON UNROUNDED DATA

Employment adjusted by census relationships to reflect number of persons by place of residence.

Information compiled by DETR's Research & Analysis Bureau

Establishment Based Industrial Employment

Nevada - Seasonally Adjusted

(Estimates In Thousands)

	Apr-18	Apr-17	CHANGE	% CHANGE	Mar-18
Total All Industries	1376.0	1330.7	45.3	3.4%	1371.7

Nevada- Non-Seasonally Adjusted

	Apr-18	Apr-17	CHANGE	% CHANGE	Mar-18
Total All Industries	1373.4	1330.4	43.0	3.2%	1363.7

Las Vegas-Paradise SA *

	Apr-18	Apr-17	CHANGE	% CHANGE	Mar-18
Las Vegas-Paradise MSA SA	998.4	967.9	30.5	3.2%	996.8

Reno/Sparks SA *

	Apr-18	Apr-17	CHANGE	% CHANGE	Mar-18
Reno/Sparks MSA SA	238.5	229.0	9.5	4.1%	237.7

Carson City SA *

	Apr-18	Apr-17	CHANGE	% CHANGE	Mar-18
Carson City MSA SA	30.7	29.9	0.8	2.7%	30.8

*Metropolitan Statistical Area

Non-Seasonally Adjusted Establishment Based Industrial Employment Las Vegas-Paradise MSA

Includes Clark County
(Estimates In Thousands)

	Apr-18	Apr-17	CHANGE	% CHANGE	Mar-18
Total All Industries	1000.0	970.7	29.3	3.0%	993.9
<u>Goods Producing</u>	90.2	81.6	8.6	10.5%	88.3
Natural Resources & Mining	0.4	0.4	0.0	0.0%	0.4
Construction	66.0	58.3	7.7	13.2%	64.2
Construction of Buildings	9.9	8.7	1.2	13.8%	9.8
Specialty Trade Contractors	50.8	44.2	6.6	14.9%	49.3
Building Foundation & Exterior Contractors	13.8	11.3	2.5	22.1%	13.0
Building Finishing Contractors	14.1	11.6	2.5	21.6%	14.0
Manufacturing	23.8	22.9	0.9	3.9%	23.7
Durable Goods	13.5	12.9	0.6	4.7%	13.4
Other Miscellaneous Manufacturing	3.9	3.9	0.0	0.0%	3.9
Non-durable Goods	10.3	10.0	0.3	3.0%	10.3
<u>Service Providing</u>	909.8	889.1	20.7	2.3%	905.6
<u>Private Service Providing</u>	804.5	787.8	16.7	2.1%	798.4
Trade, Transportation & Utilities	175.0	171.2	3.8	2.2%	175.3
Wholesale	22.5	22.4	0.1	0.4%	22.4
Retail	108.0	106.2	1.8	1.7%	108.0
Food & Beverage Stores	17.7	17.6	0.1	0.6%	17.7
Health and Personal Care Stores	7.8	7.7	0.1	1.3%	7.9
Trans, Warehousing & Utilities	44.5	42.6	1.9	4.5%	44.9
Utilities	2.6	2.6	0.0	0.0%	2.6
Transportation & Warehousing	41.9	40.0	1.9	4.7%	42.3
Air	6.7	6.7	0.0	0.0%	6.7
Transit and Ground Passenger	11.5	12.8	-1.3	-10.2%	11.7
Taxi and Limousine Service	8.2	9.2	-1.0	-10.9%	8.3
Information	11.1	11.7	-0.6	-5.1%	10.7
Telecommunications	3.0	3.0	0.0	0.0%	2.9
Financial Activities	50.3	49.7	0.6	1.2%	50.8
Finance and Insurance	27.3	27.1	0.2	0.7%	27.6
Credit Intermediation & Related	15.1	15.1	0.0	0.0%	15.3
Real Estate and Rental and Leasing	23.0	22.6	0.4	1.8%	23.2
Professional & Business Services	140.0	136.9	3.1	2.3%	138.5
Professional, Scientific and Technical	43.1	40.9	2.2	5.4%	42.8
Management of Companies	21.8	20.7	1.1	5.3%	21.6
Administrative & Support and Waste Mgt.	75.1	75.3	-0.2	-0.3%	74.1
Administrative and Support Services	72.3	72.8	-0.5	-0.7%	71.4
Employment Services	13.7	13.1	0.6	4.6%	13.4
Other Support Services	10.9	11.8	-0.9	-7.6%	10.6
Education and Health Services	100.1	95.7	4.4	4.6%	99.5
Health Care and Social Assistance	88.7	85.4	3.3	3.9%	88.6
Ambulatory Health Care Services	41.9	38.7	3.2	8.3%	41.1
Hospitals	21.4	21.1	0.3	1.4%	21.8
Leisure and Hospitality	295.2	291.1	4.1	1.4%	291.3
Arts, Entertainment and Recreation	22.0	21.2	0.8	3.8%	21.8
Accommodation and Food Service	273.2	269.9	3.3	1.2%	269.5
Accommodation	166.9	167.1	-0.2	-0.1%	166.4
Casino Hotels and Gaming	157.4	158.2	-0.8	-0.5%	157.4
Casino Hotels	152.6	153.3	-0.7	-0.5%	152.5
Gaming Industries	4.8	4.9	-0.1	-2.0%	4.9
Food Services and Drinking Places	106.3	102.8	3.5	3.4%	103.1
Full-Service Restaurants	51.5	50.8	0.7	1.4%	50.0
Limited-Service Restaurants	41.6	39.6	2.0	5.1%	40.2
Other Services	32.8	31.5	1.3	4.1%	32.3
Government	105.3	101.3	4.0	3.9%	107.2
Federal	13.0	12.8	0.2	1.6%	12.9
State	22.4	20.3	2.1	10.3%	22.7
Local	69.9	68.2	1.7	2.5%	71.6

Non-Seasonally Adjusted Data.

Data may not add due to rounding. Employment by place of work. Does not coincide with labor force concept. Includes multiple job holders.

Non-Seasonally Adjusted Establishment Based Industrial Employment

Reno-Sparks MSA

Includes Washoe and Storey Counties

(Estimates In Thousands)

	Apr-18	Apr-17	CHANGE	% CHANGE	Mar-18
<u>Total All Industries</u>	238.1	228.4	9.7	4.2%	235.7
<u>Goods Producing</u>	36.7	33.0	3.7	11.2%	36.1
Natural Resources & Mining	0.3	0.3	0.0	0.0%	0.3
Construction	16.9	16.9	0.0	0.0%	16.1
Manufacturing	19.5	15.8	3.7	23.4%	19.7
Miscellaneous Manufacturing	2.2	2.3	-0.1	-4.3%	2.2
<u>Service Providing</u>	201.4	195.4	6.0	3.1%	199.6
<u>Private Service Providing</u>	169.4	164.1	5.3	3.2%	167.4
Trade, Transportation & Utilities	52.7	51.2	1.5	2.9%	52.4
Wholesale	9.5	9.5	0.0	0.0%	9.4
Retail	23.2	23.2	0.0	0.0%	23.1
Food & Beverage Stores	3.5	3.4	0.1	2.9%	3.4
Trans, Warehousing & Utilities	20.0	18.5	1.5	8.1%	19.9
Information	2.2	2.2	0.0	0.0%	2.2
Financial Activities	10.6	10.5	0.1	1.0%	10.5
Finance and Insurance	6.2	6.2	0.0	0.0%	6.2
Professional & Business Services	32.6	30.3	2.3	7.6%	31.7
Administrative & Support and Waste Mgt.	17.1	16.3	0.8	4.9%	16.4
Education and Health Services	26.3	26.1	0.2	0.8%	26.3
Leisure and Hospitality	38.5	37.6	0.9	2.4%	37.9
Accommodation and Food Service	32.9	32.0	0.9	2.8%	32.3
Accommodation	15.4	15.6	-0.2	-1.3%	15.1
Casino Hotels	14.1	14.3	-0.2	-1.4%	14.0
Food Services and Drinking Places	17.5	16.4	1.1	6.7%	17.2
Other Services	6.5	6.2	0.3	4.8%	6.4
Government	32.0	31.3	0.7	2.2%	32.2
Federal	3.8	3.7	0.1	2.7%	3.8
State	12.0	11.4	0.6	5.3%	12.1
Local	16.2	16.2	0.0	0.0%	16.3

Non-Seasonally Adjusted Data.

Data may not add due to rounding. Employment by place of work. Does not coincide with labor force concept. Includes multiple job holders.

Non-Seasonally Adjusted Establishment Based Industrial Employment

Carson City MSA

Includes Carson City

(Estimates In Thousands)

	Apr-18	Apr-17	CHANGE	% CHANGE	Mar-18
Total All Industries	30.7	29.9	0.8	2.7%	30.5
<u>Goods Producing</u>	4.4	4.0	0.4	10.0%	4.4
Manufacturing	2.7	2.6	0.1	3.8%	2.7
<u>Service Providing</u>	26.3	25.9	0.4	1.5%	26.1
<u>Private Service Providing</u>	16.6	16.2	0.4	2.5%	16.4
Trade, Transportation & Utilities	4.2	4.1	0.1	2.4%	4.2
Retail	3.3	3.3	0.0	0.0%	3.3
Professional & Business Services	2.1	2.0	0.1	5.0%	2.0
Leisure and Hospitality	3.7	3.6	0.1	2.8%	3.7
Government	9.7	9.7	0.0	0.0%	9.7
Federal	0.4	0.5	-0.1	-20.0%	0.4
State	7.4	7.2	0.2	2.8%	7.4
Local	1.9	2.0	-0.1	-5.0%	1.9

Non-Seasonally Adjusted Data.

Data may not add due to rounding. Employment by place of work. Does not coincide with labor force concept. Includes multiple job holders.



2018 Industrial Employment (Estimates in Thousands)

Nevada Statewide (SA)													
	JAN	FEB	MAR	APR	MAY	JUN	JUL	AUG	SEP	OCT	NOV	DEC	AVERAGE
Total All Industries	1364.3	1370.2	1371.7	1376.0									1370.6
Nevada Statewide (NSA)													
	JAN	FEB	MAR	APR	MAY	JUN	JUL	AUG	SEP	OCT	NOV	DEC	AVERAGE
Total All Industries	1346.2	1356.6	1363.7	1373.4									1360.0
Las Vegas MSA (SA)													
	JAN	FEB	MAR	APR	MAY	JUN	JUL	AUG	SEP	OCT		DEC	AVERAGE
Total All Industries	991.3	994.3	996.8	998.4									995.2
Reno/Sparks MSA (SA)													
	JAN	FEB	MAR	APR	MAY	JUN	JUL	AUG	SEP	OCT	NOV	DEC	AVERAGE
Total All Industries	236.3	236.6	237.7	238.5									237.3
Carson City MSA (SA)													
	JAN	FEB	MAR	APR	MAY	JUN	JUL	AUG	SEP	OCT	NOV	DEC	AVERAGE
Total All Industries	30.8	30.8	30.8	30.7									30.8

updated

Apr-18

(NSA)-Non-Seasonally Adjusted Data.

Data may not add due to rounding. Employment by place of work. Does not coincide with labor force concept. Includes multiple job holders.



Non-Seasonally Adjusted Establishment Based Industrial Employment

Las Vegas-Paradise MSA

	JAN	FEB	MAR	APR	MAY	JUN	JUL	AUG	SEP	OCT	NOV	DEC	AVERAGE
Total All Industries	981.5	987.7	993.9	1000.0									990.8
Goods Producing	86.1	86.6	88.3	90.2									87.8
Natural Resources & Mining	0.4	0.4	0.4	0.4									0.4
Construction	62.3	62.8	64.2	66.0									63.8
Construction of Buildings	9.6	9.5	9.8	9.9									9.7
Specialty Trade Contractors	47.5	48.2	49.3	50.8									49.0
Building Foundation & Exterior Contrac	12.2	12.6	13.0	13.8									12.9
Building Finishing Contractors	13.6	13.5	14.0	14.1									13.8
Manufacturing	23.4	23.4	23.7	23.8									23.6
Durable Goods	13.2	13.2	13.4	13.5									13.3
Other Miscellaneous Manufacturing	3.9	3.9	3.9	3.9									3.9
Non-durable Goods	10.2	10.2	10.3	10.3									10.3
Service Providing	895.4	901.1	905.6	909.8									903.0
Private Service Providing	790.4	794.2	798.4	804.5									796.9
Trade, Transportation & Utilities	176.4	174.8	175.3	175.0									175.4
Wholesale	22.5	22.6	22.4	22.5									22.5
Retail	109.4	107.0	108.0	108.0									108.1
Food & Beverage Stores	17.7	17.6	17.7	17.7									17.7
Health and Personal Care Stores	7.9	7.9	7.9	7.8									7.9
Trans, Warehousing & Utilities	44.5	45.2	44.9	44.5									44.8
Utilities	2.6	2.6	2.6	2.6									2.6
Transportation & Warehousing	41.9	42.6	42.3	41.9									42.2
Air	6.6	6.7	6.7	6.7									6.7
Transit and Ground Passenger	11.8	11.8	11.7	11.5									11.7
Taxi and Limousine Service	8.4	8.4	8.3	8.2									8.3
Information	10.8	10.8	10.7	11.1									10.9
Telecommunications	3.0	2.9	2.9	3.0									3.0
Financial Activities	50.1	50.8	50.8	50.3									50.5
Finance and Insurance	27.1	27.5	27.6	27.3									27.4
Credit Intermediation & Related	15.2	15.2	15.3	15.1									15.2
Real Estate and Rental and Leasing	23.0	23.3	23.2	23.0									23.1
Professional & Business Services	138.5	138.5	138.5	140.0									138.9
Professional, Scientific and Technical	41.2	42.8	42.8	43.1									42.5
Management of Companies	21.6	21.8	21.6	21.8									21.7
Administrative & Support and Waste Mgt.	75.7	73.9	74.1	75.1									74.7
Administrative and Support Services	73.0	71.2	71.4	72.3									72.0
Employment Services	13.6	12.7	13.4	13.7									13.4
Other Support Services	11.3	10.6	10.6	10.9									10.9
Education and Health Services	98.1	100.2	99.5	100.1									99.5
Health Care and Social Assistance	87.9	89.1	88.6	88.7									88.6
Ambulatory Health Care Services	40.2	41.3	41.1	41.9									41.1
Hospitals	21.5	21.9	21.8	21.4									21.7
Leisure and Hospitality	285.0	287.3	291.3	295.2									289.7
Arts, Entertainment and Recreation	21.1	21.3	21.8	22.0									21.6
Accommodation and Food Service	263.9	266.0	269.5	273.2									268.2
Accommodation	163.2	164.1	166.4	166.9									165.2
Casino Hotels and Gaming	154.3	155.3	157.4	157.4									156.1
Casino Hotels	149.4	150.4	152.5	152.6									151.2
Gaming Industries	4.9	4.9	4.9	4.8									4.9
Food Services and Drinking Places	100.7	101.9	103.1	106.3									103.0
Full-Service Restaurants	48.9	49.4	50.0	51.5									50.0
Limited-Service Restaurants	38.9	39.5	40.2	41.6									40.1
Other Services	31.5	31.8	32.3	32.8									32.1
Government	105.0	106.9	107.2	105.3									106.1
Federal	12.8	12.9	12.9	13.0									12.9
State	21.2	22.7	22.7	22.4									22.3
Local	71.0	71.3	71.6	69.9									71.0

Non-Seasonally Adjusted Data.

updated Apr-18



Non-Seasonally Adjusted Establishment Based Industrial Employment Reno-Sparks MSA

	JAN	FEB	MAR	APR	MAY	JUN	JUL	AUG	SEP	OCT	NOV	DEC	AVERAGE
Total All Industries	231.5	233.7	235.7	238.1									234.8
Goods Producing	35.5	35.6	36.1	36.7									36.0
Natural Resources & Mining	0.3	0.3	0.3	0.3									0.3
Construction	15.9	15.7	16.1	16.9									16.2
Manufacturing	19.3	19.6	19.7	19.5									19.5
Miscellaneous Manufacturing	2.2	2.2	2.2	2.2									2.2
Service Providing	196.0	198.1	199.6	201.4									198.8
Private Service Providing	165.8	166.0	167.4	169.4									167.2
Trade, Transportation & Utilities	52.4	52.3	52.4	52.7									52.5
Wholesale	9.4	9.4	9.4	9.5									9.4
Retail	23.1	22.7	23.1	23.2									23.0
Food & Beverage Stores	3.5	3.4	3.4	3.5									3.5
Trans, Warehousing & Utilities	19.9	20.2	19.9	20.0									20.0
Information	2.2	2.2	2.2	2.2									2.2
Financial Activities	10.5	10.5	10.5	10.6									10.5
Finance and Insurance	6.2	6.2	6.2	6.2									6.2
Professional & Business Services	31.2	30.7	31.7	32.6									31.6
Administrative & Support and Waste Mgt.	16.5	16.3	16.4	17.1									16.6
Education and Health Services	26.1	26.3	26.3	26.3									26.3
Leisure and Hospitality	37.1	37.6	37.9	38.5									37.8
Accommodation and Food Service	31.8	32.2	32.3	32.9									32.3
Accommodation	15.3	15.2	15.1	15.4									15.3
Casino Hotels	13.9	14.0	14.0	14.1									14.0
Food Services and Drinking Places	16.5	17.0	17.2	17.5									17.1
Other Services	6.3	6.4	6.4	6.5									6.4
Government	30.2	32.1	32.2	32.0									31.6
Federal	3.8	3.8	3.8	3.8									3.8
State	10.6	11.9	12.1	12.0									11.7
Local	15.8	16.4	16.3	16.2									16.2

Non-Seasonally Adjusted Data.

updated Apr-18



Non-Seasonally Adjusted Establishment Based Industrial Employment Carson City MSA

	JAN	FEB	MAR	APR	MAY	JUN	JUL	AUG	SEP	OCT	NOV	DEC	AVERAGE
Total All Industries	30.0	30.3	30.5	30.7									30.4
<i>Goods Producing</i>	4.3	4.3	4.4	4.4									4.4
Manufacturing	2.7	2.7	2.7	2.7									2.7
<i>Service Providing</i>	25.7	26.0	26.1	26.3									26.0
<i>Private Service Providing</i>	16.0	16.2	16.4	16.6									16.3
Trade, Transportation & Utilities	4.2	4.2	4.2	4.2									4.2
Retail	3.3	3.3	3.3	3.3									3.3
Professional & Business Services	2.0	2.0	2.0	2.1									2.0
Leisure and Hospitality	3.6	3.6	3.7	3.7									3.7
Government	9.7	9.8	9.7	9.7									9.7
Federal	0.4	0.4	0.4	0.4									0.4
State	7.4	7.4	7.4	7.4									7.4
Local	1.9	2.0	1.9	1.9									1.9

Non-Seasonally Adjusted Data.

updated Apr-18

Data may not add due to rounding. Employment by place of work. Does not coincide with labor force concept. Includes multiple job holders.



2018 LABOR FORCE SUMMARY DATA (Estimates in Thousands)

	JAN	FEB	MAR	APR	MAY	JUN	JUL	AUG	SEP	OCT	NOV	DEC	AVG
NEVADA- SA													
LABOR FORCE	1476.4	1480.4	1484.9	1488.8									1482.6
EMPLOYMENT 1/	1404.2	1407.9	1411.9	1415.7									1409.9
UNEMPLOYMENT	72.1	72.5	73.0	73.1									72.7
UNEMPLOYMENT RATE	4.9%	4.9%	4.9%	4.9%									4.9%
NEVADA- NSA													
LABOR FORCE	1475.7	1491.9	1494.4	1493.5									1488.9
EMPLOYMENT	1398.3	1416.9	1420.2	1422.0									1414.4
UNEMPLOYMENT	77.4	75.0	74.2	71.5									74.5
UNEMPLOYMENT RATE	5.2%	5.0%	5.0%	4.8%									5.0%
LAS VEGAS MSA*													
LABOR FORCE	1085.0	1095.6	1094.7	1097.3									1093.2
EMPLOYMENT 1/	1026.6	1038.7	1038.4	1042.4									1036.5
UNEMPLOYMENT	58.4	56.9	56.3	54.9									56.6
UNEMPLOYMENT RATE	5.4%	5.2%	5.1%	5.0%									5.2%
RENO MSA*													
LABOR FORCE	243.1	246.5	247.4	247.7									246.2
EMPLOYMENT 1/	232.1	236.1	237.0	238.1									235.8
UNEMPLOYMENT	11.0	10.4	10.4	9.6									10.3
UNEMPLOYMENT RATE	4.5%	4.2%	4.2%	3.9%									4.2%
CARSON CITY MSA *													
LABOR FORCE	25.9	26.3	26.3	26.3									26.2
EMPLOYMENT 1/	24.4	24.7	24.8	24.9									24.7
UNEMPLOYMENT	1.5	1.6	1.5	1.4									1.5
UNEMPLOYMENT RATE	5.8%	5.9%	5.7%	5.2%									5.7%
ELKO MICROPOLITAN AREA *													
LABOR FORCE	27.9	28.0	28.5	27.6									28.0
EMPLOYMENT 1/	26.7	26.9	27.5	26.7									27.0
UNEMPLOYMENT	1.2	1.1	1.0	0.9									1.1
UNEMPLOYMENT RATE	4.1%	3.8%	3.6%	3.4%									3.8%

Note: Unemployment rates are based on unrounded data.

1/ Adjusted by census relationships to reflect number of persons by place of residence.

2/ Clark County

3/ Washoe and Storey Counties

4/ Carson City

5/ Elko and Eureka Counties



2018 LABOR FORCE SUMMARY DATA

	JAN	FEB	MAR	APR	MAY	JUN	JUL	AUG	SEP	OCT	NOV	DEC	AVG
CARSON CITY COUNTY*													
LABOR FORCE	25,860	26,299	26,285	26,249									26,173
EMPLOYMENT	24,356	24,749	24,788	24,872									24,691
UNEMPLOYMENT	1,504	1,550	1,497	1,377									1,482
UNEMPLOYMENT RATE	5.8%	5.9%	5.7%	5.2%									5.7%
CHURCHILL COUNTY*													
LABOR FORCE	10,492	10,817	11,223	10,573									10,776
EMPLOYMENT	9,955	10,321	10,741	10,131									10,287
UNEMPLOYMENT	537	496	482	442									489
UNEMPLOYMENT RATE	5.1%	4.6%	4.3%	4.2%									4.5%
CLARK COUNTY*													
LABOR FORCE	1,084,970	1,095,597	1,094,655	1,097,334									1,093,139
EMPLOYMENT	1,026,553	1,038,660	1,038,375	1,042,410									1,036,500
UNEMPLOYMENT	58,417	56,937	56,280	54,924									56,640
UNEMPLOYMENT RATE	5.4%	5.2%	5.1%	5.0%									5.2%
DOUGLAS COUNTY*													
LABOR FORCE	22,698	22,975	23,083	22,760									22,879
EMPLOYMENT	21,518	21,871	21,976	21,741									21,777
UNEMPLOYMENT	1,180	1,104	1,107	1,019									1,103
UNEMPLOYMENT RATE	5.2%	4.8%	4.8%	4.5%									4.8%
ELKO COUNTY*													
LABOR FORCE	26,810	26,856	27,326	26,692									26,921
EMPLOYMENT	25,694	25,831	26,334	25,788									25,912
UNEMPLOYMENT	1,116	1,025	992	904									1,009
UNEMPLOYMENT RATE	4.2%	3.8%	3.6%	3.4%									3.7%

Note: Unemployment rates are based on unrounded data.

Employment adjusted by census relationships to reflect number of persons by place of residence.



2018 LABOR FORCE SUMMARY DATA

	JAN	FEB	MAR	APR	MAY	JUN	JUL	AUG	SEP	OCT	NOV	DEC	AVG
LYON COUNTY*													
LABOR FORCE	21,808	21,953	22,265	21,851									21,969
EMPLOYMENT	20,339	20,544	20,837	20,548									20,567
UNEMPLOYMENT	1,469	1,409	1,428	1,303									1,402
UNEMPLOYMENT RATE	6.7%	6.4%	6.4%	6.0%									6.4%
MINERAL COUNTY*													
LABOR FORCE	2,009	2,050	2,050	2,031									2,035
EMPLOYMENT	1,886	1,938	1,942	1,921									1,922
UNEMPLOYMENT	123	112	108	110									113
UNEMPLOYMENT RATE	6.1%	5.5%	5.3%	5.4%									5.6%
NYE COUNTY*													
LABOR FORCE	16,413	16,570	16,742	16,538									16,566
EMPLOYMENT	15,316	15,545	15,740	15,585									15,547
UNEMPLOYMENT	1,097	1,025	1,002	953									1,019
UNEMPLOYMENT RATE	6.7%	6.2%	6.0%	5.8%									6.2%
PERSHING COUNTY*													
LABOR FORCE	2,557	2,682	2,850	2,550									2,660
EMPLOYMENT	2,428	2,547	2,718	2,434									2,532
UNEMPLOYMENT	129	135	132	116									128
UNEMPLOYMENT RATE	5.0%	5.0%	4.6%	4.5%									4.8%
STOREY COUNTY*													
LABOR FORCE	1,990	2,019	2,005	2,030									2,011
EMPLOYMENT	1,878	1,910	1,912	1,930									1,908
UNEMPLOYMENT	112	109	93	100									104
UNEMPLOYMENT RATE	5.6%	5.4%	4.6%	4.9%									5.1%

Note: Unemployment rates are based on unrounded data.

Employment adjusted by census relationships to reflect number of persons by place of residence.



2018 LABOR FORCE SUMMARY DATA

	JAN	FEB	MAR	APR	MAY	JUN	JUL	AUG	SEP	OCT	NOV	DEC	AVG
ESMERALDA COUNTY*													
LABOR FORCE	510	520	557	505									523
EMPLOYMENT	488	499	537	481									501
UNEMPLOYMENT	22	21	20	24									22
UNEMPLOYMENT RATE	4.3%	4.0%	3.6%	4.8%									4.2%
EUREKA COUNTY*													
LABOR FORCE	1,020	1,093	1,223	990									1,082
EMPLOYMENT	982	1,054	1,191	961									1,047
UNEMPLOYMENT	38	39	32	29									35
UNEMPLOYMENT RATE	3.7%	3.6%	2.6%	2.9%									3.2%
HUMBOLDT COUNTY*													
LABOR FORCE	7,936	8,276	8,682	8,062									8,239
EMPLOYMENT	7,589	7,949	8,358	7,778									7,919
UNEMPLOYMENT	347	327	324	284									321
UNEMPLOYMENT RATE	4.4%	4.0%	3.7%	3.5%									3.9%
LANDER COUNTY*													
LABOR FORCE	3,131	3,203	3,288	3,129									3,188
EMPLOYMENT	2,964	3,048	3,143	2,996									3,038
UNEMPLOYMENT	167	155	145	133									150
UNEMPLOYMENT RATE	5.3%	4.8%	4.4%	4.3%									4.7%
LINCOLN COUNTY*													
LABOR FORCE	2,009	2,077	2,182	1,993									2,065
EMPLOYMENT	1,900	1,971	2,086	1,897									1,964
UNEMPLOYMENT	109	106	96	96									102
UNEMPLOYMENT RATE	5.4%	5.1%	4.4%	4.8%									4.9%

Note: Unemployment rates are based on unrounded data.

Employment adjusted by census relationships to reflect number of persons by place of residence.



2018 LABOR FORCE SUMMARY DATA

	JAN	FEB	MAR	APR	MAY	JUN	JUL	AUG	SEP	OCT	NOV	DEC	AVG
WASHOE COUNTY*													
LABOR FORCE	241,066	244,416	245,414	245,667									244,141
EMPLOYMENT	230,201	234,158	235,120	236,184									233,916
UNEMPLOYMENT	10,865	10,258	10,294	9,483									10,225
UNEMPLOYMENT RATE	4.5%	4.2%	4.2%	3.9%									4.2%
WHITE PINE COUNTY*													
LABOR FORCE	4,436	4,488	4,589	4,501									4,504
EMPLOYMENT	4,233	4,293	4,391	4,311									4,307
UNEMPLOYMENT	203	195	198	190									197
UNEMPLOYMENT RATE	4.6%	4.3%	4.3%	4.2%									4.4%

Note: Unemployment rates are based on unrounded data.

Employment adjusted by census relationships to reflect number of persons by place of residence.