

MEDIA CONTACT
Rosa Mendez
detrmedia@detr.nv.gov

PRESS RELEASE



STEVE SISOLAK
Governor

ELISA CAFFERATA
Director

DAVID SCHMIDT
Chief Economist

STATEWIDE PRESS RELEASE

For Immediate Release
September 16, 2020

Unemployment Rate Improves; Nevada Continues to Add Jobs Back in August

CARSON CITY, NV - While employment in Nevada realized an increase over the month of 6,500 jobs, the state has seen a decrease of 133,600 jobs since August 2019, for an annual growth rate of -9.4%, according to the Nevada Department of Employment, Training and Rehabilitation's (DETR) August 2020 economic report. The total employment level in the State is 1,289,800. The state's unemployment rate in August was 13.2 percent, up 9.3 percentage points when compared to August 2019.

"I'm encouraged by this month's numbers and am happy to see that employment has increased and the number of unemployed has decreased in the State. There is more work to do to help Nevadans get back to work, and we're committed to doing our part," Director Elisa Cafferata said.

DETR's report also notes that Nevada's Unemployment Insurance (UI) claims decreased by 17,103, or 25.6 percent over the month and is up 39,910 or 412 percent over the year.

"Nevada added jobs for the fourth straight month in August, though with few changes in the state's reopening plan the gain was lower than in May, June, and July. Employment continues to increase across many industries with trade, transportation and utilities adding the most jobs. The number of unemployed remains high but continues to improve. The decline in unemployment brings the rate below the peak of last recession, when the unemployment rate hit 13.7 percent over a decade ago. The challenges posed by the pandemic continue to weigh on the labor market, and the response to COVID-19 by businesses and the public continues to evolve. Although the labor market continues to improve, we still have a long road ahead for a full recovery," said David Schmidt, Chief Economist for DETR.

Additional August Economic Report Highlights:

- Nevada jobs are up by (0.5%), US jobs are up by (+1.0%) from July to August.
- Trade, transportation and utilities added the most jobs (4,500) over the month.
- Leisure and hospitality (-15.9%) and other services (-10.8%) are down the most since the same time last year.

- The unemployment rate in Nevada is higher than the national rate in August and is at 13.2% on a seasonally adjusted basis and 13.3% on an unadjusted basis; the national rate was 8.4% adjusted and 8.5% unadjusted.

###

ABOUT THE RESEARCH AND ANALYSIS BUREAU:

The Research and Analysis Bureau is Nevada's premier source for labor market information. A part of DETR, the Bureau is responsible for creating, analyzing, and reporting Nevada's labor market information, in cooperation with the United States Bureau of Labor Statistics (BLS).

Visit us <http://www.nevadaworkforce.com> and Follow us on Twitter: <http://www.twitter.com/NVlabormarket>

DAVID SCHMIDT
Chief Economist



STEVE SISOLAK
Governor

ELISA CAFFERATA
Director

Nevada Statewide Labor Market Overview

August 2020

Published on September 16, 2020

In this release, we provide updates on our primary employment, unemployment, and unemployment insurance programs. This month's report continues to show the impact of COVID-19 on Nevada's labor market. As policy restrictions hold, Nevada's economy continues to be limited by the effects of COVID-19, especially in bars that do not serve food in the larger metro areas. Following the significant re-openings that took place in May and June, jobs were added back at a much slower rate in July. In August, employment growth continues our slower overall recovery trends seen last month. Accommodation and food service, wholesale trade, construction, and manufacturing realized reductions in employment this month. Trade transportation and utilities added the most jobs over the month as employees in these industries continue to return to work. This growth was reflected in the unemployment rate which improved slightly in August. The number of people filing for unemployment insurance, both regular and PUA benefits, continues to decline as layoffs subside. However, job losses remain extremely elevated, far above their pre-pandemic level, leaving plenty of work to do for the job market to get back to normal. While the labor market continues to recover, there still is a long road ahead for a full recovery.

Information on how to file an unemployment insurance or pandemic unemployment assistance claim, where to get updates from DETR, or what other services are available from the department can be found at the end of this write-up. Additional labor market information can be found on our website (<http://nevadaworkforce.com/>).

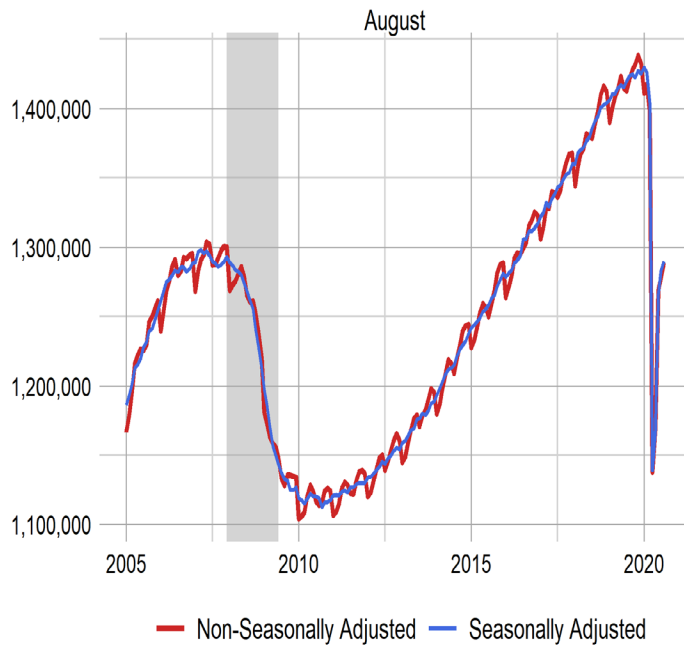
Current Employment Statistics ([CES](#))

Estimates for this section come from the Current Employment Statistics (CES) program sponsored by the Bureau of Labor statistics ([BLS](#)). Total nonfarm employment realized a increase of 6,500 jobs from July to August, a growth rate of 0.5%. Since August 2019 total nonfarm employment saw a decrease of -133,600 jobs, or -9.4%. The largest employment increases in August, occurred in trade/transportation/utilities and in other services.

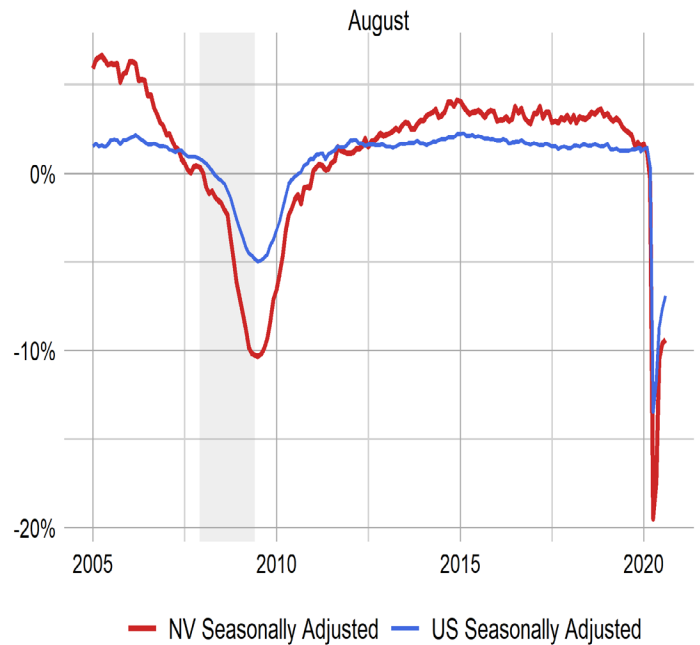
For more information visit our [CES Page](#), see the summary tables at the end of the document, or check out our dashboards for a [CES summary](#) or [industry estimates](#).

More summary information on [Nevada's Labor Market](#) and the [U.S. Labor Market](#).

Nevada Employment



Nevada vs U.S. Employment Growth



Adjusted Current Employment Statistics

August

Area	August 2020	July 2020	Monthly Change	August 2019	Yearly Change	Annual Growth Rate
U.S.	140,914,000	139,543,000	1,371,000	151,368,000	-10,454,000	-6.91%
Nevada	1,289,800	1,283,300	6,500	1,423,400	-133,600	-9.39%

Unadjusted Current Employment Statistics

Area	August 2020	July 2020	Monthly Change	August 2019	Yearly Change	Annual Growth Rate
U.S.	140,598,000	139,063,000	1,535,000	151,556,000	-10,958,000	-7.23%
Nevada	1,289,000	1,278,100	10,900	1,421,100	-132,100	-9.30%

Local Area Unemployment Statistics ([LAUS](#))

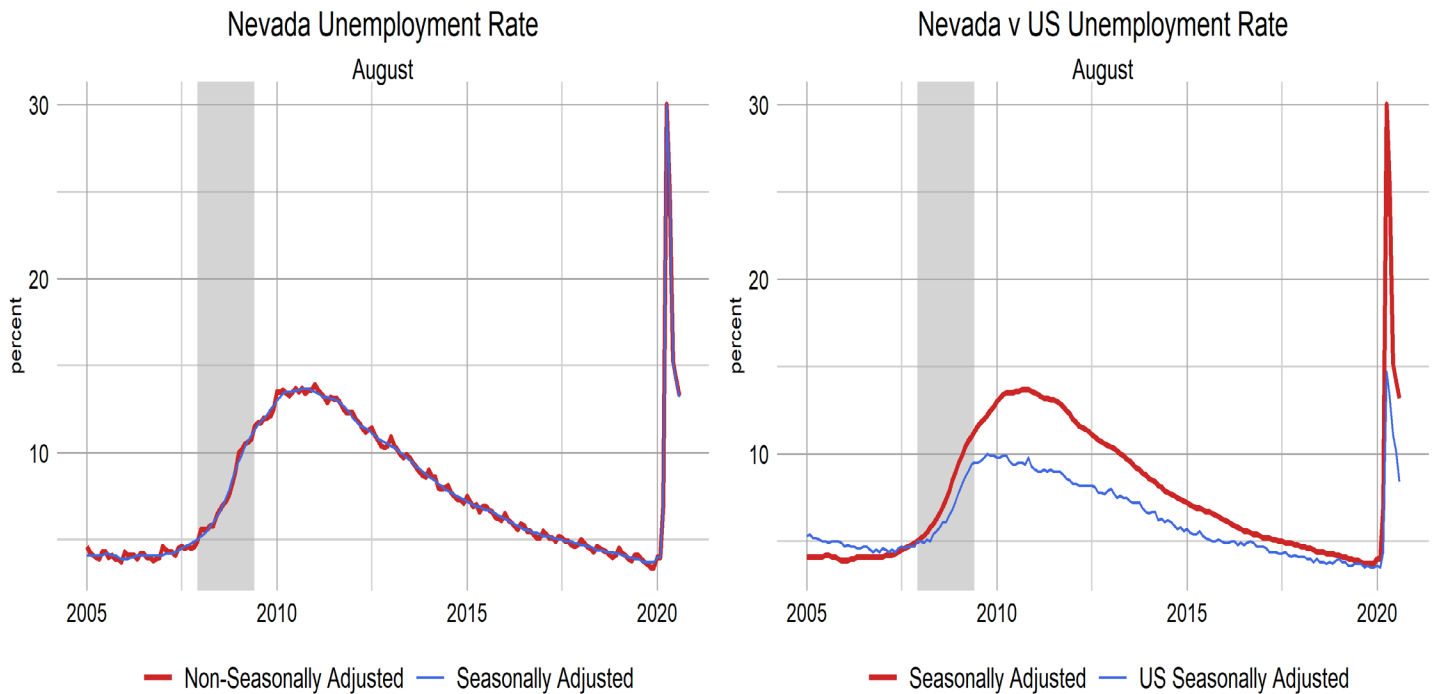
Figures for our unemployment estimates come from the Local Area Unemployment Statistics (LAUS) program sponsored by the ([BLS](#)). The state's unemployment rate is 13.2% percent this month, down -1.0 percentage point from July and up 9.4 percentage point when compared to August 2019. Unemployment totaled 197,770, down -10,680 from July and up 138,569 from August 2019.

Visit our [LAUS page](#) for more information, see the summary tables for industry summaries by area, or check out our [dashboard](#) for a look at each area.

Adjusted Local Area Unemployment Statistics

August

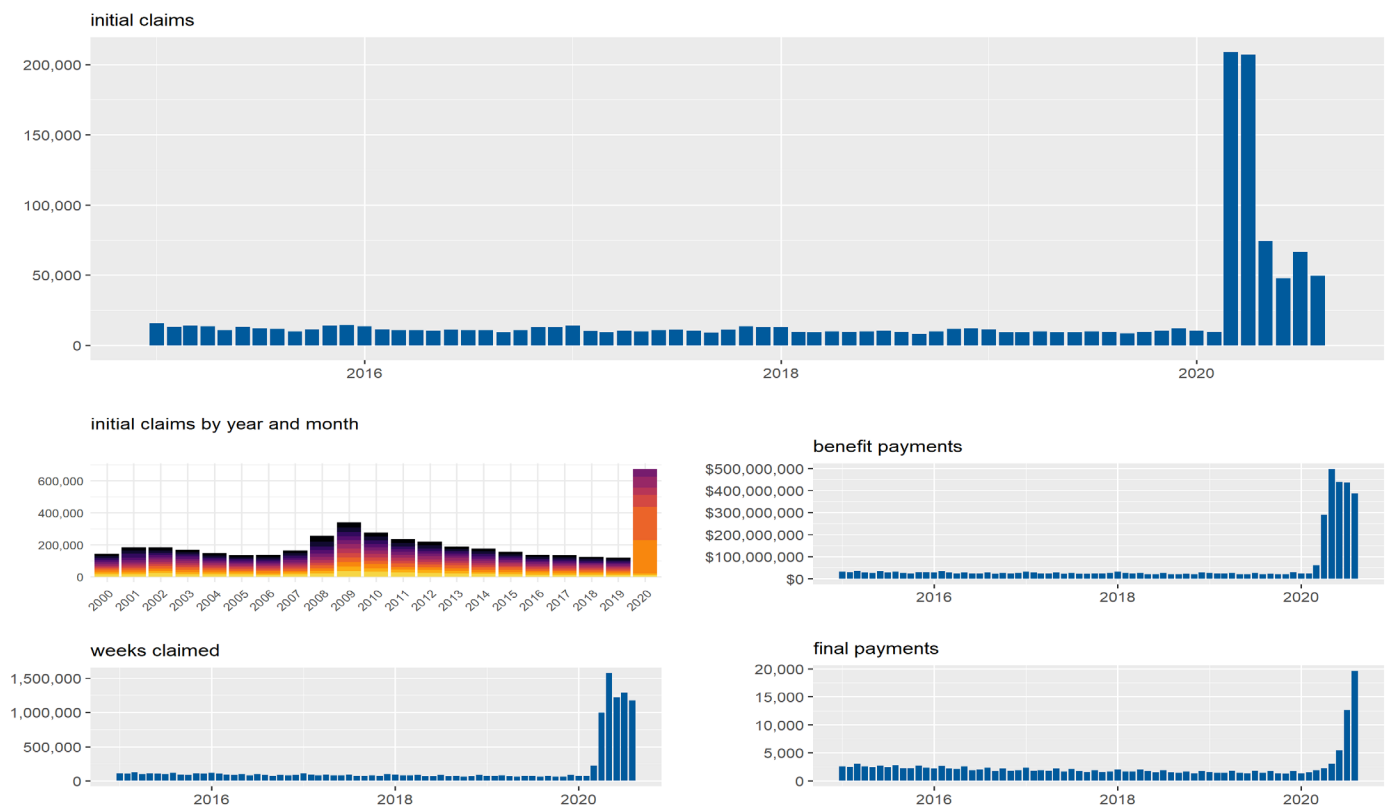
Area	Labor Force	Employed	Unemployed	Unemployment Rate	Labor Force Participation Rate	Employment Population Ratio
Nevada	1,493,637	1,295,867	197,770	13.2	60.2	52.3



Unemployment Insurance (UI)

In August, 49,595 initial claims for regular unemployment insurance were filed in the State of Nevada, a decrease of 17,103 claims, or 25.6 percent, from a month ago. While an improvement from July, August's total is still the fifth most in state history. Thus far in 2020, nearly 675,000 regular initial claims have been filed, already more than the state experienced in all months from 2015 to 2019 combined (699,010).

State of Nevada Unemployment Insurance Activity



August saw declines in the number of weeks claimed, which fell by 9.1 percent from July, leading to a decline in the total amount of benefit payments paid in the month. Nearly \$387 million was paid out in regular benefits, a decline of \$50 million. Since March, over \$2.1 billion has been paid out in regular benefits. A report measure we are monitoring, final payments, also known as benefit exhaustions. Final payments rose by 55 percent in the August and are expected to continue to increase as more claimants use up all their regular program benefits. These claimants are likely eligible for the benefit extension programs, which currently provide up to an additional 33 weeks of benefits.

August 2020 Unemployment Insurance Activity

Measure	August 2020	August 2019	% change	July 2020	% change	12 month average
Initial Claims	49,595	9,685	412.08%	66,698	-25.64%	59,636
Weeks Claimed	1,169,210	64,578	1,710.54%	1,286,807	-9.14%	573,870
Weeks Compensated	1,226,794	58,870	1,983.90%	1,250,023	-1.86%	550,503
Amount Compensated	\$386,956,759	\$20,587,063	1,779.61%	\$436,809,471	-11.41%	\$187,509,595
Weeks Compensated Total Unemployment	1,085,424	53,608	1,924.74%	1,109,884	-2.20%	499,273
Amount Compensated Total Unemployment	\$361,634,679	\$19,390,484	1,765.01%	\$410,010,018	-11.80%	\$177,401,110
First Payments	21,480	4,193	412.28%	34,857	-38.38%	36,207
Final Payments (Exhaustions)	19,583	1,435	1,264.67%	12,604	55.37%	4,470
Average Weekly Benefit	\$333.17	\$361.71	-7.89%	\$369.42	-9.81%	\$364.72
Average Duration (in weeks)	13.79	13.23	4.25%	11.89	16.00%	11.30
Exhaustion Rate	100.13%	33.11%	202.42%	66.50%	50.57%	43.17%

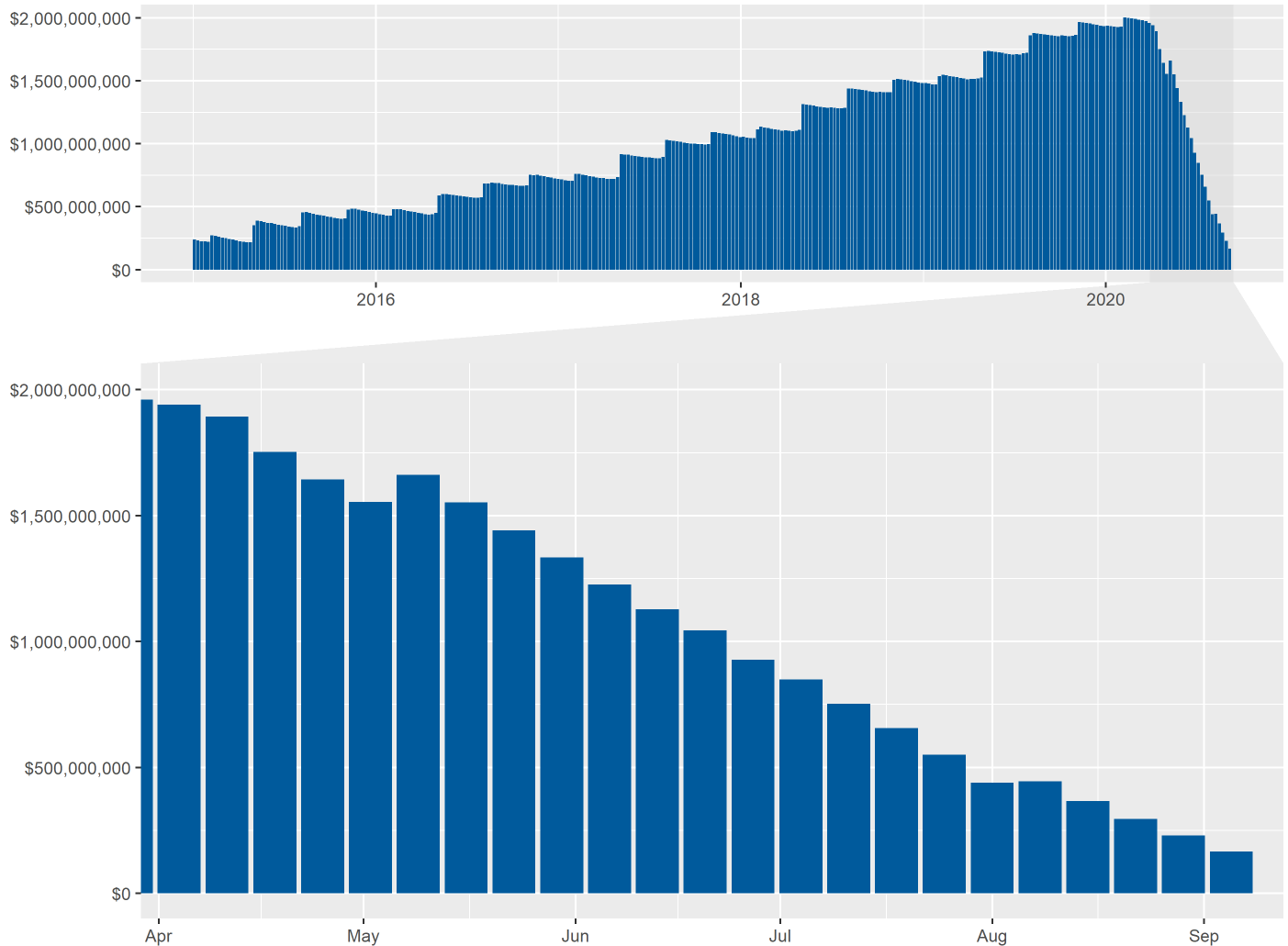
Source: ETA 5159

Figure #

Nevada's Unemployment Insurance Trust Fund held a balance of \$166.8 million as of the week ending September 5th, which equates to approximately 2.5 weeks of benefits at the current level of outflows. The decline in the number of claimants filing has reduced pressure on the Trust Fund, though borrowing from the federal government is still likely in the coming weeks. As of September 11th, fifteen states have already needed to borrow from the federal government to support benefit payments.

UI Trust Fund Balance

week ending balance



Nevada Unemployment Services Available

DETR serves all Nevada citizens by being the State's lead workforce development agency. DETR consists of divisions that offer workforce related services, job placement and training, services for people with disabilities, investigation of claims of discrimination, unemployment insurance benefits, and labor market data.

For current updates from the department and to find resources available, please visit:

<https://detr.nv.gov/coronavirus>.

To file an unemployment insurance claim or for additional information, please visit <http://ui.nv.gov/>

To file a claim for PUA or for more information, please visit:

<https://detr.nv.gov/pua>

Additionally, a document that summarizes of all DETR services has been added to our website at <http://nevadaworkforce.com/>.

Prepared by the Research and Analysis Bureau with contributions from: Alex Capello, Jason Gortari, Jeremy Hays, Michael La Rue, Dionny McDonnell, Christopher Robison, Dave Schmidt, Marianne Segurson, and Tim Wilcox.

Special thanks to all the R and RStudio developers that built the packages to make this possible. Packages used in this report include tidyverse, viridis, ggthemes, scales, data.table, RcppRoll, plotly, patchwork, reshape2, knitr, ggforce, DT, and gt.

This workforce product was funded by a grant awarded by the U.S. Department of Labor's Employment and Training Administration. The product was created by the recipient and does not necessarily reflect the official position of the U.S. Department of Labor. The U.S. Department of Labor makes no guarantees, warranties, or assurances of any kind, express or implied, with respect to such information, including any information on linked sites and including, but not limited to, accuracy of the information or its completeness, timeliness, usefulness, adequacy, continued availability, or ownership. This product is copyrighted by the institution that created it. Internal use by an organization and/or personal use by an individual for non-commercial purposes is permissible. All other uses require the prior authorization of the copyright owner.

CES Summary Tables

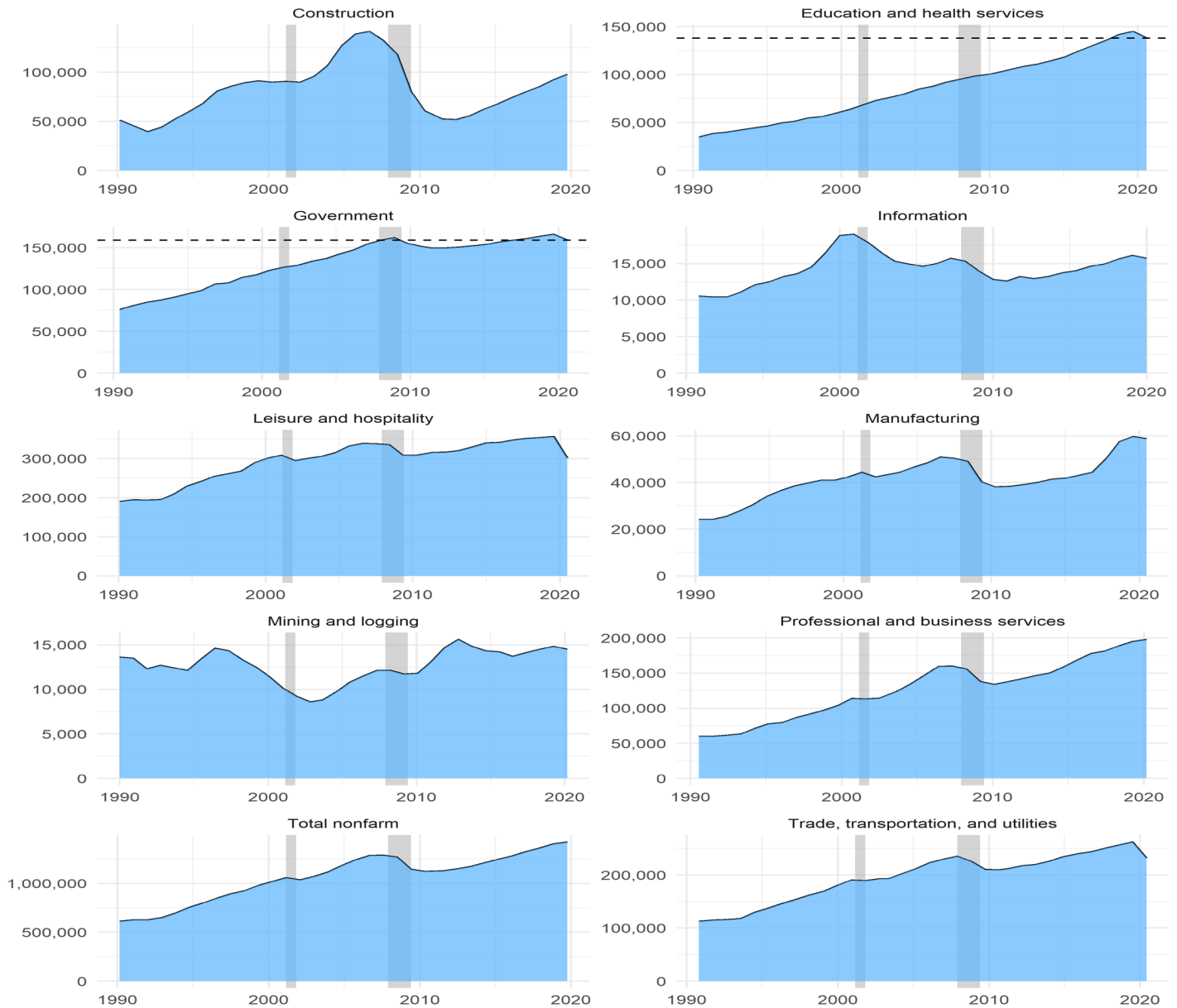
Seasonally adjusted estimates are used to show underlying economic trends by accounting for regularly seen seasonal patterns, and the result is smoother estimates. They are found by taking the difference of the unadjusted estimate and the expected seasonal movement.

Nevada Nonfarm Jobs Over the Month Change

July - August

Area	Unadjusted Change	Expected Seasonal Movement	Seasonally Adjusted Change
U.S.	1,535,000	164,000	1,371,000
Nevada	10,900	4,400	6,500

State of Nevada Industry Employment seasonally adjusted



Source: Bureau of Labor Statistics, Current Employment Statistics

Nevada Labor Force Summary

Statewide (Estimates in Thousands)

	Aug-20	Aug-19	+/- change	% change	Jul-20
Non-Seasonally Adjusted					
LABOR FORCE	1,494.55	1,548.152	-53.6	-3.5%	1,494.9
EMPLOYMENT	1,296.49	1,488.44	-192.0	-12.9%	1,281.4
UNEMPLOYMENT	198.06	59.71	138.35	231.7%	213.6
UNEMPLOYMENT RATE	13.3%	3.9%	9.4%	243.6%	14.3%
Seasonally Adjusted					
LABOR FORCE	1,493.64	1,548.251	-54.6	-3.5%	1,488.6
EMPLOYMENT	1,295.87	1,489.05	-193.2	-13.0%	1,277.9
UNEMPLOYMENT	197.77	59.20	138.57	234.1%	210.7
UNEMPLOYMENT RATE	13.2%	3.8%	9.4%	246.3%	14.2%

Nevada Labor Force Summary

Statewide Last 13 Months (Estimates in Thousands)

	Aug-19	Sep-19	Oct-19	Nov-19	Dec-19	Jan-20	Feb-20	Mar-20	Apr-20	May-20	Jun-20	Jul-20	Aug-20	12m Avg.
Non-Seasonally Adjusted														
LABOR FORCE	1,548.2	1,552.4	1,555.2	1,554.6	1,550.1	1,560.9	1,573.0	1,561.5	1,425.5	1,382.2	1,502.7	1,494.9	1,494.5	1,517.3
EMPLOYMENT	1,488.4	1,494.7	1,499.7	1,501.6	1,497.9	1,501.0	1,513.5	1,454.2	999.8	1,035.1	1,272.4	1,281.4	1,296.5	1,362.3
UNEMPLOYMENT	59.7	57.7	55.4	53.0	52.3	59.9	59.5	107.3	428.7	347.1	230.3	213.6	198.1	155.2
UNEMPLOYMENT RATE	3.9%	3.7%	3.6%	3.4%	3.4%	3.8%	3.8%	6.9%	30.1%	25.1%	15.3%	14.3%	13.3%	10.6%
Seasonally Adjusted														
LABOR FORCE	1,548.3	1,550.5	1,551.9	1,551.7	1,551.4	1,555.3	1,559.5	1,566.2	1,429.1	1,382.8	1,501.1	1,488.6	1,493.6	1,515.2
EMPLOYMENT	1,489.0	1,492.4	1,494.7	1,494.7	1,494.3	1,499.0	1,503.3	1,458.5	999.3	1,033.3	1,273.6	1,277.9	1,295.9	1,359.7
UNEMPLOYMENT	59.2	58.1	57.2	57.0	57.1	56.3	56.2	107.8	429.7	349.5	227.4	210.7	197.8	155.4
UNEMPLOYMENT RATE	3.8%	3.7%	3.7%	3.7%	3.7%	3.6%	3.6%	6.9%	30.1%	25.3%	15.2%	14.2%	13.2%	10.6%

Seasonally Adjusted Establishment Based Industrial Employment

Statewide (Estimates in Thousands)

	Aug-20	Aug-19	+/- change	% change	Jul-20
Total nonfarm	1,289.8	1,423.4	-133.6	-9.4%	1,283.3
Mining and logging	16.0	14.7	1.3	8.8%	15.9
Construction	91.6	96.6	-5.0	-5.2%	94.2
Manufacturing	57.2	59.6	-2.4	-4.0%	58.7
Durable goods	37.4	40.2	-2.8	-7.0%	39.4
Nondurable goods	19.8	19.4	0.4	2.1%	19.3
Trade, transportation, and utilities	237.8	262.3	-24.5	-9.3%	233.3
Wholesale Trade	30.9	38.6	-7.7	-19.9%	32.8
Retail trade	139	148.2	-8.9	-6.0%	133.6
Transportation, Warehousing, and Utilities	67.6	75.5	-7.9	-10.5%	66.9
Information	13.5	15.8	-2.3	-14.6%	13.7
Financial activities	69.4	69.2	0.2	0.3%	68.4
Finance and insurance	39.3	39.1	0.2	0.5%	38.7
Real estate and rental and leasing	30.1	30.1	0.0	0.0%	29.7
Professional and business services	170.7	195.9	-25.2	-12.9%	170.1
Professional and technical services	60.2	62.0	-1.8	-2.9%	61.0
Management of companies and enterprises	19.4	27.4	-8.0	-29.2%	19.6
Administrative and waste services	91.1	106.5	-15.4	-14.5%	89.5
Education and health services	137.9	145.1	-7.2	-5.0%	135.9
Educational services	12.0	13.2	-1.2	-9.1%	11.2
Health care and social assistance	125.9	131.9	-6.0	-4.5%	124.7
Leisure and hospitality	299.3	355.8	-56.5	-15.9%	301.4
Arts, entertainment, and recreation	33.0	34.3	-1.3	-3.8%	32.6
Other services	37.3	41.8	-4.5	-10.8%	34.8
Government	159.1	166.6	-7.5	-4.5%	156.9
Federal	22.9	19.7	3.2	16.2%	20.6
State government	44.2	41.4	2.8	6.8%	44.2
Local government	92.0	105.5	-13.5	-12.8%	92.1

Seasonally Adjusted Establishment Based Industrial Employment

Statewide Last 14 Months (Estimates in Thousands)

	Jul-19	Aug-19	Sep-19	Oct-19	Nov-19	Dec-19	Jan-20	Feb-20	Mar-20	Apr-20	May-20	Jun-20	Jul-20	Aug-20	12m Avg.
Total nonfarm	1,419.8	1,423.4	1,424.5	1,422.5	1,427.3	1,425.2	1,429.6	1,426.3	1,404.6	1,139.0	1,167.5	1,266.3	1,283.3	1,289.8	1,342.2
Mining and logging	14.6	14.7	14.7	14.8	14.5	14.2	14.0	14.3	14.5	14.2	15.3	15.3	15.9	16.0	14.8
Construction	96.4	96.6	97.4	97.7	99.6	97.9	98.0	99.4	103.3	94.7	98.6	95.6	94.2	91.6	97.3
Manufacturing	59.5	59.6	59.4	59.2	59.0	59.3	59.1	59.3	58.9	57.3	56.8	56.9	58.7	57.2	58.4
Durable goods	40.1	40.2	40.1	39.8	39.6	39.8	39.6	39.6	39.1	37.9	37.4	37.7	39.4	37.4	39.0
Nondurable goods	19.4	19.4	19.3	19.4	19.4	19.5	19.5	19.7	19.8	19.4	19.4	19.2	19.3	19.8	19.5
Trade, transportation, and utilities	261.9	262.3	262.4	263.2	262.0	260.8	259.4	258.6	254.6	213.9	219.0	231.6	233.3	237.8	246.4
Wholesale Trade	38.7	38.6	38.7	38.0	37.5	36.7	36.2	36.4	36.0	30.1	32.0	32.7	32.8	30.9	34.8
Retail trade	148.3	148.2	148.0	148.8	148.3	147.7	147.5	146.6	143.8	118.7	119.8	131.9	133.6	139.3	139.5
Transportation, Warehousing, and Utilities	74.9	75.5	75.7	76.4	76.2	76.4	75.7	75.6	74.8	65.1	67.2	67.0	66.9	67.6	72.0
Information	15.8	15.8	16.0	15.7	15.8	15.8	15.7	15.7	15.6	14.1	14.1	13.8	13.7	13.5	15.0
Financial activities	68.8	69.2	69.3	69.8	70.2	70.5	70.2	69.7	68.4	66.3	67.3	67.5	68.4	69.4	68.9
Finance and insurance	38.9	39.1	39.2	39.7	39.8	40.1	39.9	39.6	39.0	38.6	38.4	38.5	38.7	39.3	39.2
Real estate and rental and leasing	29.9	30.1	30.1	30.1	30.4	30.4	30.3	30.1	29.4	27.7	28.9	29.0	29.7	30.1	29.7
Professional and business services	195.5	195.9	196.8	196.3	199.4	199.1	204.5	200.0	197.8	157.9	155.5	164.6	170.1	170.7	184.4
Professional and technical services	61.5	62.0	61.8	62.6	63.3	63.3	64.5	63.4	63.4	60.9	58.8	59.7	61.0	60.2	61.9
Management of companies and enterprises	27.5	27.4	27.5	27.4	27.4	27.4	27.2	27.0	27.3	18.9	17.9	18.7	19.6	19.4	23.8
Administrative and waste services	106.5	106.5	107.5	106.3	108.7	108.4	112.8	109.6	107.1	78.1	78.8	86.2	89.5	91.1	98.7
Education and health services	144.4	145.1	144.8	144.0	144.8	144.1	145.9	146.4	145.0	128.5	129.0	132.8	135.9	137.9	139.9
Educational services	12.8	13.2	13.1	13.6	13.6	13.7	13.9	13.8	13.4	11.8	11.7	10.7	11.2	12.0	12.7
Health care and social assistance	131.6	131.9	131.7	130.4	131.2	130.4	132.0	132.6	131.6	116.7	117.3	122.1	124.7	125.9	127.2
Leisure and hospitality	356.1	355.8	356.1	353.7	353.7	355.4	355.4	354.4	338.5	203.6	221.1	297.6	301.4	299.3	315.8
Arts, entertainment, and recreation	34.1	34.3	34.7	34.8	35.0	35.2	35.3	35.3	32.9	27.5	31.0	34.2	32.6	33.0	33.5
Accommodation and food services	322.0	321.5	321.4	318.9	318.7	320.2	320.1	319.1	305.6	176.1	190.1	263.4	268.8	266.3	282.4
Other services	41.6	41.8	41.6	41.3	41.4	41.2	41.5	41.7	40.9	30.8	33.2	36.0	34.8	37.3	38.5
Government	165.2	166.6	166.0	166.8	166.9	166.9	165.9	166.8	167.1	157.7	157.6	154.6	156.9	159.1	162.7
Federal	19.6	19.7	19.7	19.7	20.0	19.7	19.9	20.1	20.2	20.2	20.3	20.3	20.6	22.9	20.3
State government	41.5	41.4	41.8	41.3	41.2	41.0	40.8	40.8	40.7	40.7	40.8	43.6	44.2	44.2	41.8
Local government	104.1	105.5	104.5	105.8	105.7	106.2	105.2	105.9	106.2	96.8	96.5	90.7	92.1	92.0	100.6

Non-Seasonally Adjusted Establishment Based Industrial Employment

Statewide (Estimates in Thousands)

	Aug-20	Aug-19	+/- change	% change	Jul-20
Total nonfarm	1,289.0	1,421.1	-132.1	-9.30%	1,278.1
Goods-producing	167.0	172.8	-5.8	-3.36%	171.2
Mining and logging	16.3	14.9	1.4	9.40%	16.2
Metal ore mining	12.5	11.1	1.4	12.61%	12.5
Construction	93.2	98.3	-5.1	-5.19%	95.9
Construction of buildings	17.2	18.3	-1.1	-6.01%	17.3
Specialty trade contractors	67.5	71.2	-3.7	-5.20%	69.7
Manufacturing	57.5	59.6	-2.1	-3.52%	59.1
Durable goods	37.7	40.2	-2.5	-6.22%	39.8
Nondurable goods	19.8	19.4	0.4	2.06%	19.3
Service-providing	1,122.0	1,248.3	-126.3	-10.12%	1,106.9
Private service-providing	970.5	1,088.9	-118.4	-10.87%	959.2
Trade, transportation, and utilities	236.9	261.5	-24.6	-9.41%	232.2
Wholesale Trade	31.0	38.7	-7.7	-19.90%	32.9
Retail trade	138.9	147.5	-8.6	-5.83%	133.1
Food and beverage stores	24.3	24.9	-0.6	-2.41%	24.1
Health and personal care stores	8.3	9.0	-0.7	-7.78%	8.3
Transportation, Warehousing, and Utilities	67.0	75.3	-8.3	-11.02%	66.2
Utilities	4.1	4.1	0.0	0.00%	4.1
Transportation and Warehousing	62.9	71.2	-8.3	-11.66%	62.1
Transit and ground passenger transportation	6.5	10.5	-4.0	-38.10%	6.6
Taxi and limousine service	3.3	6.0	-2.7	-45.00%	3.3
Information	13.5	15.6	-2.1	-13.46%	13.6
Telecommunications	3.5	4.0	-0.5	-12.50%	3.6
Financial activities	69.4	69.4	0.0	0.00%	68.1
Finance and insurance	39.3	39.1	0.2	0.51%	38.6
Credit intermediation and related activities	20.6	20.3	0.3	1.48%	20.3
Real estate and rental and leasing	30.1	30.3	-0.2	-0.66%	29.5
Professional and business services	171.6	196.5	-24.9	-12.67%	168.9
Professional and technical services	60.2	62.0	-1.8	-2.90%	60.9
Management of companies and enterprises	19.6	27.4	-7.8	-28.47%	19.5
Administrative and waste services	91.8	107.1	-15.3	-14.29%	88.5
Administrative and support services	88.9	102.9	-14.0	-13.61%	85.4
Employment services	19.6	24.0	-4.4	-18.33%	18.8
Education and health services	138.2	145.2	-7.0	-4.82%	135.6
Educational services	11.5	12.9	-1.4	-10.85%	10.6
Health care and social assistance	126.7	132.3	-5.6	-4.23%	125.0
Ambulatory health care services	57.8	58.9	-1.1	-1.87%	56.7
Hospitals	33.2	33.7	-0.5	-1.48%	33.2
Leisure and hospitality	303.3	358.3	-55.0	-15.35%	305.6
Arts, entertainment, and recreation	34.2	35.5	-1.3	-3.66%	34.0
Amusements, gambling, and recreation	24.6	26.8	-2.2	-8.21%	24.6
Accommodation and food services	269.1	322.8	-53.7	-16.64%	271.6
Accommodation	158.8	189.4	-30.6	-16.16%	161.0
Casino hotels	133.3	171.5	-38.2	-22.27%	134.9
Gambling industries	9.3	10.2	-0.9	-8.82%	9.3
Food services and drinking places	110.3	133.4	-23.1	-17.32%	110.6
Full-service restaurants	58.8	63.6	-4.8	-7.55%	59.4
Limited-service eating places	47.4	55.1	-7.7	-13.97%	46.4
Other services	37.6	42.4	-4.8	-11.32%	35.2
Government	151.5	159.4	-7.9	-4.96%	147.7
Federal	23.2	19.9	3.3	16.58%	20.7
State government	40.2	37.4	2.8	7.49%	40.4
State government education	20.3	17.5	2.8	16.00%	20.5
State government, excluding education	19.9	19.9	0.0	0.00%	19.9
Local government	88.1	102.1	-14.0	-13.71%	86.6
Local government education	42.4	53.0	-10.6	-20.00%	40.5
Local government, excluding education	45.7	49.1	-3.4	-6.92%	46.1

Non-Seasonally Adjusted Establishment Based Industrial Employment

Statewide Last 13 Months (Estimates in Thousands)

	Aug-19	Sep-19	Oct-19	Nov-19	Dec-19	Jan-20	Feb-20	Mar-20	Apr-20	May-20	Jun-20	Jul-20	Aug-20	12m. Avg.
Total nonfarm	1,421.1	1,428.2	1,431.7	1,438.1	1,432.3	1,411.3	1,417.7	1,396.8	1,138.1	1,169.7	1,269.4	1,278.1	1,289.0	1,341.7
Goods-producing	172.8	172.7	173.9	173.8	171.9	168.5	169.8	174.3	164.9	169.8	169.5	171.2	167.0	170.6
Mining and logging	14.9	14.7	14.9	14.6	14.2	13.7	14.1	14.3	14.2	15.3	15.6	16.2	16.3	14.8
Metal ore mining	11.1	11.0	11.0	11.0	10.9	10.7	10.6	10.9	11.0	12.0	12.0	12.5	12.5	11.3
Construction	98.3	98.5	99.5	100.2	98.4	96.0	96.7	101.5	93.7	97.9	96.6	95.9	93.2	97.3
Construction of buildings	18.3	18.2	18.4	18.3	18.2	17.4	17.5	17.6	16.7	17.1	17.4	17.3	17.2	17.6
Specialty trade contractors	71.2	71.7	72.7	73.6	72.0	70.5	70.8	75.2	70.3	71.9	70.9	69.7	67.5	71.4
Manufacturing	59.6	59.5	59.5	59.0	59.3	58.8	59.0	58.5	57.0	56.6	57.3	59.1	57.5	58.4
Durable goods	40.2	40.1	40.0	39.5	39.8	39.3	39.4	38.8	37.7	37.2	38.1	39.8	37.7	39.0
Nondurable goods	19.4	19.4	19.5	19.5	19.5	19.5	19.6	19.7	19.3	19.4	19.2	19.3	19.8	19.5
Service-providing	1,248.3	1,255.5	1,257.8	1,264.3	1,260.4	1,242.8	1,247.9	1,222.5	973.2	999.9	1,099.9	1,106.9	1,122.0	1,171.1
Private service-providing	1,088.9	1,086.7	1,087.9	1,094.1	1,089.6	1,079.6	1,078.5	1,052.3	813.0	840.2	948.6	959.2	970.5	1,008.4
Trade, transportation, and utilities	261.5	261.6	264.1	270.2	270.0	258.3	256.6	250.9	211.1	217.0	230.4	232.2	236.9	246.6
Wholesale Trade	38.7	38.6	38.2	37.7	36.9	36.3	36.3	35.8	29.9	31.9	32.6	32.9	31.0	34.8
Retail trade	147.5	147.2	149.4	154.4	153.7	146.4	145.4	141.2	116.9	118.6	131.2	133.1	138.9	139.7
Food and beverage stores	24.9	24.8	24.9	25.1	25.1	24.7	24.8	24.7	23.3	23.4	24.1	24.1	24.3	24.4
Health and personal care stores	9.0	9.0	9.0	9.3	9.4	9.1	9.0	9.0	8.3	8.3	8.3	8.3	8.3	8.8
Transportation, Warehousing, and Utilities	75.3	75.8	76.5	78.1	79.4	75.6	74.9	73.9	64.3	66.5	66.6	66.2	67.0	72.1
Utilities	4.1	4.0	4.0	4.0	4.1	4.1	4.1	4.1	4.1	4.1	4.1	4.1	4.1	4.1
Transportation and Warehousing	71.2	71.8	72.5	74.1	75.3	71.5	70.8	69.8	60.2	62.4	62.5	62.1	62.9	68.0
Transit and ground passenger transportation	10.5	10.5	10.4	10.5	10.4	10.4	10.4	10.3	6.8	6.7	6.7	6.6	6.5	8.8
Taxi and limousine service	6.0	6.0	5.9	5.9	5.9	5.9	5.8	5.7	3.5	3.5	3.4	3.3	3.3	4.8
Information	15.6	15.5	15.7	16.0	15.8	15.4	15.6	15.4	14.1	14.2	14.1	13.6	13.5	14.9
Telecommunications	4.0	4.0	4.1	4.1	4.1	4.0	4.0	4.0	3.6	3.6	3.6	3.6	3.5	3.8
Financial activities	69.4	69.3	69.9	70.6	70.9	69.9	69.5	68.3	66.1	67.3	68.1	68.1	69.4	69.0
Finance and insurance	39.1	39.1	39.6	40.1	40.4	40.3	39.6	39.1	38.4	38.2	38.7	38.6	39.3	39.3
Credit intermediation and related activities	20.3	20.4	20.4	20.5	20.5	20.5	20.5	20.2	19.9	19.8	20.1	20.3	20.6	20.3
Real estate and rental and leasing	30.3	30.2	30.3	30.5	30.5	29.6	29.9	29.2	27.7	29.1	29.4	29.5	30.1	29.7
Professional and business services	196.5	196.5	198.5	201.2	197.8	203.7	199.6	196.1	157.7	155.4	164.6	168.9	171.6	184.3
Professional and technical services	62.0	61.5	63.1	64.1	63.8	64.0	63.6	63.4	61.4	58.8	59.3	60.9	60.2	62.0
Management of companies and enterprises	27.4	27.4	27.6	27.4	27.5	26.9	26.7	27.1	18.7	17.8	18.7	19.5	19.6	23.7
Administrative and waste services	107.1	107.6	107.8	109.7	106.5	112.8	109.3	105.6	77.6	78.8	86.6	88.5	91.8	98.5
Administrative and support services	102.9	103.4	103.6	104.7	101.2	107.7	104.1	100.5	74.3	75.7	83.6	85.4	88.9	94.4
Employment services	24.0	24.3	25.2	26.5	26.1	26.1	25.0	24.1	15.8	16.4	18.5	18.8	19.6	22.2
Education and health services	145.2	144.7	144.4	145.6	144.8	144.7	146.2	144.3	128.4	129.0	133.5	135.6	138.2	139.9
Educational services	12.9	13.3	13.9	13.9	13.9	13.9	14.1	13.7	12.1	11.8	10.6	10.6	11.5	12.8
Health care and social assistance	132.3	131.4	130.5	131.7	130.9	130.8	132.1	130.6	116.3	117.2	122.9	125.0	126.7	127.2
Ambulatory health care services	58.9	58.6	58.0	58.1	58.2	58.3	59.0	57.8	48.4	50.3	55.1	56.7	57.8	56.4
Hospitals	33.7	33.1	33.2	33.3	33.4	33.3	33.4	33.5	33.4	33.4	33.5	33.2	33.2	33.3
Leisure and hospitality	358.3	357.1	353.7	349.1	349.8	347.0	349.8	336.8	204.7	223.8	301.5	305.6	303.3	315.2
Arts, entertainment, and recreation	35.5	35.1	34.4	33.7	34.2	33.6	34.1	32.5	27.7	31.9	35.5	34.0	34.2	33.4
Amusements, gambling, and recreation	26.8	26.4	25.9	25.4	25.8	25.5	25.9	24.6	21.3	24.0	25.7	24.6	24.6	25.0
Accommodation and food services	322.8	322.0	319.3	315.4	315.6	313.4	315.7	304.3	177.0	191.9	266.0	271.6	269.1	281.8
Accommodation	189.4	188.9	187.9	185.0	184.7	183.4	182.8	177.6	120.3	119.6	160.4	161.0	158.8	167.5
Casino hotels	171.5	171.0	169.9	167.6	167.4	166.6	166.3	161.2	110.7	108.1	133.6	134.9	133.3	149.2
Gambling industries	10.2	10.3	10.2	10.2	10.3	10.2	10.2	9.7	7.0	7.7	9.3	9.3	9.3	9.5
Food services and drinking places	133.4	133.1	131.4	130.4	130.9	130.0	132.9	126.7	56.7	72.3	105.6	110.6	110.3	114.2
Full-service restaurants	63.6	63.7	63.1	63.0	62.4	62.7	64.1	60.6	17.7	29.3	55.1	59.4	58.8	55.0
Limited service eating places	55.1	54.6	53.8	54.4	54.2	53.2	54.2	53.7	34.0	37.9	45.1	46.4	47.4	49.1
Other services	42.1	42.0	41.6	41.4	40.5	40.6	41.2	40.5	30.9	33.5	36.4	35.2	37.6	38.4
Government	159.4	168.8	169.9	170.2	170.8	163.2	169.4	170.2	160.2	159.7	151.3	147.7	151.5	162.7
Federal	19.9	19.9	19.8	20.0	19.9	19.8	19.8	19.9	20.0	20.3	20.5	20.7	23.2	20.3
State government	37.4	43.2	43.7	43.1	42.7	37.8	42.3	42.4	42.1	41.7	41.0	40.4	40.2	41.7
State government education	17.5	23.4	23.7	23.1	22.7	17.8	22.3	22.3	21.9	21.5	20.9	20.5	20.3	21.7
State government, excluding education	19.9	19.8	20.0	20.0	20.0	20.0	20.0	20.1	20.2	20.2	20.1	19.9	19.9	20.0
Local government	102.1	105.7	106.4	107.1	108.2	105.6	107.3	107.9	98.1	97.7	89.8	86.6	88.1	100.7
Local government education	53.0	57.1	58.1	58.8	59.8	57.0	58.6	59.3	53.5	53.1	44.1	40.5	42.4	53.5
Local government, excluding education	49.1	48.6	48.3	48.3	48.4	48.6	48.7	48.6	44.6	44.6	45.7	46.1	45.7	47.2