

MEDIA CONTACT
Rosa Mendez
detrmedia@detr.nv.gov

PRESS RELEASE



STEVE SISOLAK
Governor

ELISA CAFFERATA
Acting Director

DAVID SCHMIDT
Chief Economist

RESEARCH AND ANALYSIS BUREAU
UNEMPLOYMENT INSURANCE CLAIMS PRESS RELEASE

For Immediate Release
August 28, 2020

Regular Initial Claims Fall to Lowest Levels Since Mid-March

CARSON CITY, NV - Finalized data from the Nevada Department of Employment, Training and Rehabilitation (DETR) show initial claims for unemployment insurance (UI) totaled 8,858 for the week ending August 22, down 2,080 claims, or 19.0 percent, compared to last week's total of 10,938 claims. This is the fewest initial claims filed since the week ending March 14. Through the week ending August 22, there have been 662,510 initial claims filed in 2020, 640,716 of which have been filed since the week ending March 14.

Continued claims, which represent the current number of insured unemployed workers filing weekly for unemployment insurance benefits, fell for the second straight week to 228,203, a decline of 12,143 claims, or 5.1 percent, from the previous week's total of 240,346. This is the fewest continued claims since the report week ending April 11 when there were 189,007 claims filed.

Nevada's insured unemployment rate, which is the ratio of continued claims in a week to the total number of jobs covered by the unemployment insurance system (also known as covered employment), fell by 0.9 percentage points to 16.4 percent. It should be noted that the calculation of the insured unemployment rate is different from that of the state's total unemployment rate.

The Pandemic Unemployment Assistance (PUA) program, which provides up to 46 weeks of benefits for the self-employed, 1099 contract workers, and gig workers saw 10,871 initial claims filed in the week ending August 22, a decrease of 1,485, or 12.0 percent, from last week's total of 12,356. This is the fewest PUA initial claims filed in a week since the start of the program. Through the week ending August 22, 420,936 PUA initial claims have been filed.

PUA continued claims totaled 107,334 in the week ending August 22, a decline of 12,862 from the previous week's revised total of 120,196. Weekly PUA continued claims are now reported by the benefit week claimed. This follows the reporting procedure for regular continued claims and allows us to understand the number of unemployed workers filing weekly for PUA benefits.

Nevada's Pandemic Emergency Unemployment Compensation (PEUC) program, which provides up to 13 weeks of benefits to individuals who have exhausted their regular unemployment benefits, saw 21,365 claims filed in the week, an increase of 1,837 claims from a week ago.

Nevada's State Extended Benefit (SEB) program, which provides up to 20 weeks of benefits to individuals who have exhausted both their regular unemployment benefits and PEUC program benefits, saw 2,338 claims filed in the week, an increase of 861 claims from a week ago.

Nationally, the advance figure for seasonally adjusted regular initial claims was 1,006,000 a decrease of 98,000 claims from the previous week's revised level of 1,104,000. The national insured unemployment rate for the week ending August 15 was 9.9 percent, a decrease of 0.2 percentage points from the previous week's revised rate. The national rate is reported with a one-week lag.

State level data from the U.S. Department of Labor can be found here [[DOL Weekly Claims Report](#)]. Please note that state data from the U.S. Department of Labor tends to be released more slowly than national data. View the state level unemployment insurance claims report for the week ending August 22 here [[Weekly Report](#)]. A dashboard for Nevada weekly claims can be viewed here [[Weekly Dashboard](#)]. A page for Nevada weekly claims characteristics by program can be viewed here [[Weekly Claims Characteristics](#)]. A monthly claims dashboard can be found here [[Monthly Dashboard](#)] and a monthly claims demographic page can be found here [[Monthly Demographics](#)]. View weekly county claims trends here [[Weekly by County](#)]. Dashboards are interactive reports that allow you to dig deeper into the data.

To file for unemployment in the State of Nevada, please use the online application available 24/7 at <http://ui.nv.gov/css.html>. People unable to file online may file via telephone by calling a UI Claims Call Center between 8 a.m. and 8 p.m., Monday through Friday and Saturday between 8 a.m. and noon. Northern UI Call Center: (775) 684-0350; Southern UI Call Center: (702) 486-0350; Rural areas and Out-of-State: (888) 890-8211. Claimants are highly encouraged to use the internet to file their UI claims, as it is the fastest and most convenient way to file and reserves the phone lines for individuals who are not able or do not have the necessary resources to file online. Online filing during non-peak hours, such as early mornings, at night or weekends is also highly recommended. To continue to receive benefits, claimants must file weekly.

DETR is aware of the unemployment fraud that is plaguing the state and is actively working with law enforcement entities and the Department of Labor to detect, prevent and address unemployment fraud. Employers and individuals who believe they have been a victim of unemployment fraud, can file a report with the agency by visiting www.detr.nv.gov and selecting the [Fraud Reporting Form](#) on the left under "Quick links." Once a report is filed with the Department of Employment, Training and Rehabilitation (DETR), nothing else is required by the reporting party. DETR will flag the account so payments are not issued. If needed, the Department may reach out for additional information. To view what additional steps individuals and employers can take should they believe a fraudulent claim has been filed, review DETR's [fraud flyer](#) located on the Bulletin Board at www.detr.nv.gov.

For Nevada workers who are self-employed, 1099 contract workers, and gig workers, Nevada's Pandemic Unemployment Assistance program (PUA) is now available. For further information regarding the PUA program, visit detr.nv.gov/pua#. Individuals will be able to file online at www.employnv.gov or call the PUA Call Center at (800) 603-9681 between 8 a.m. and 8 p.m., Monday through Friday, and Saturday between 8 a.m. and noon.

Claimants are encouraged to visit <http://ui.nv.gov/css.html> and at detr.nv.gov/coronavirus to view important announcements and access essential resources. Online tutorial videos are also available in both English and Spanish and can be viewed on the [Nevada Unemployment Insurance](#) YouTube page.

###

Visit us <http://www.nevadaworkforce.com> and Follow us on Twitter: <http://www.twitter.com/NVlabormarket>

ABOUT THE RESEARCH AND ANALYSIS BUREAU

The Research and Analysis Bureau is Nevada's premier source for labor market information. A part of DETR, the Bureau

is responsible for creating, analyzing, and reporting Nevada's labor market information, in cooperation with the United States Bureau of Labor Statistics (BLS).

UNEMPLOYMENT INSURANCE CLAIMS

INITIAL CLAIMS:

8,858 REGULAR + 10,871 PUA

Regular initial claims down 2,080 claims, or 19.0%, compared to the previous week.

Weekly total is the fewest initial claims since the week ending March 14th.

PUA initial claims down 1,485, or 12.0%, compared to the previous week.

CONTINUED CLAIMS:

**228,203 REGULAR + 107,334 PUA +
21,635 PEUC + 2,338 SEB**

Regular continued claims down 12,143 claims, or 5.1%, compared to the previous week.

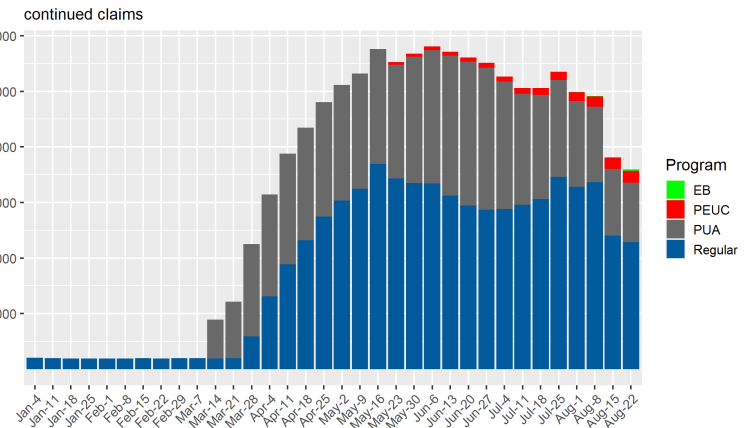
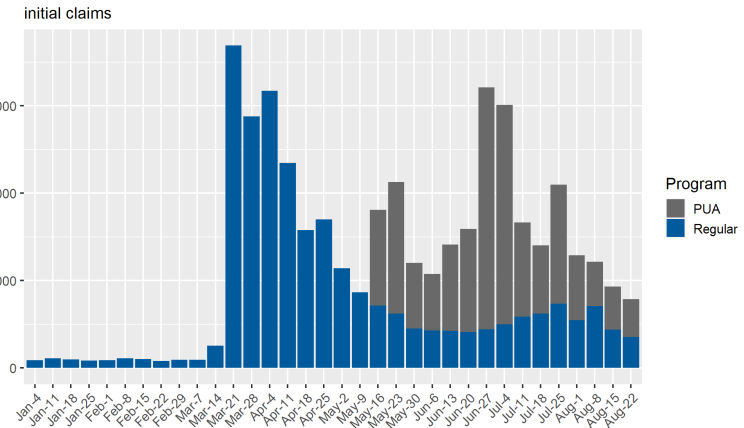
PUA continued claims down 12,862 claims, or 10.7%, compared to the previous week.

PEUC continued claims up 1,837 claims, or 9.3%, compared to the previous week.

SEB continued claims up 861 claims, or 58.3%, compared to the previous week.

Across all programs, there were a total of 359,510 claims filed in the week.

State of Nevada Weekly Claims for Unemployment Insurance
weekly totals since start of 2020



Source: ETA 539



State of Nevada Unemployment Insurance Claims

Filing Statistics for Week Ending 8/22/2020

Department of Employment, Training & Rehabilitation

Elisa Cafferata, Acting Director

Kimberly Gaa, Administrator

David Schmidt, Chief Economist

*Prepared by the Research and Analysis Bureau
Updated: 2020-08-28*

Weekly Federal UI Claim Statistics

UI Initial Claims by Week

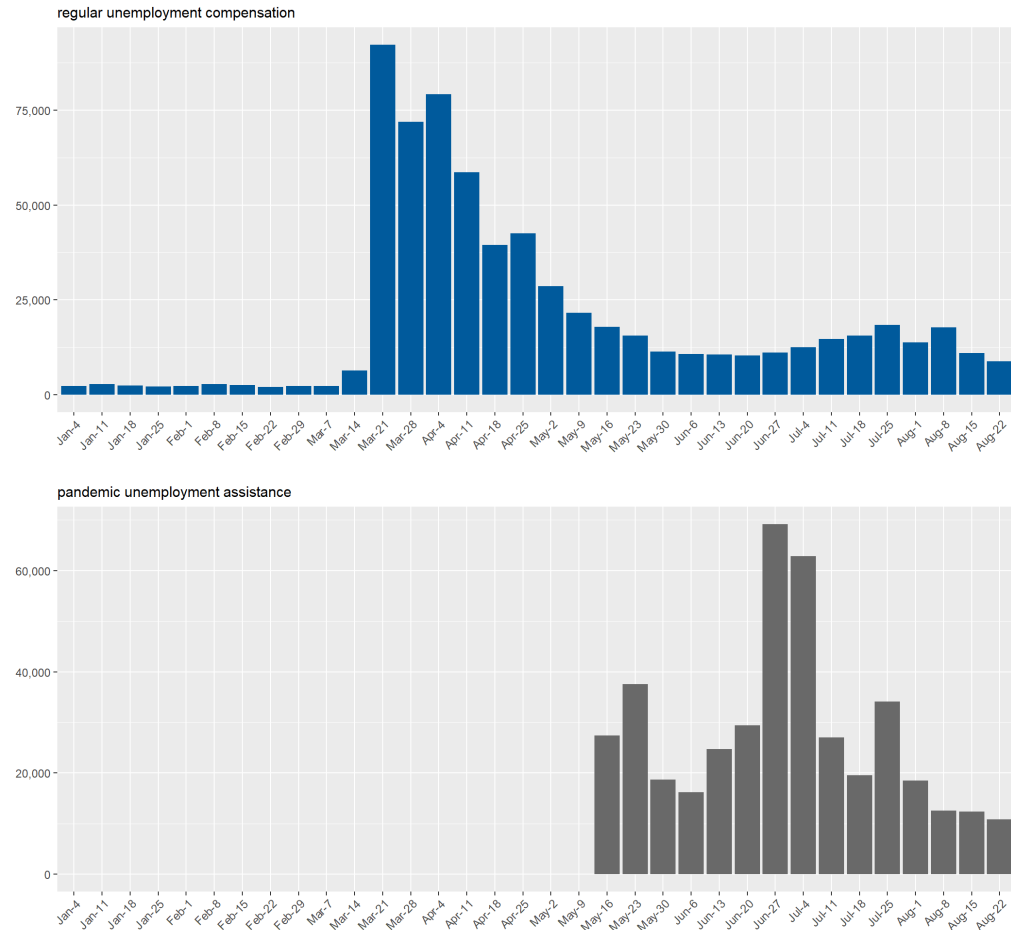
Final initial claims totals for week ending 8/22/2020 (ETA 539).

Regular initial claims totaled 8,858 in the week, down 2,080 claims, or 19.0%, compared to the previous week.

Pandemic Unemployment Assistance (PUA) claims totaled 10,871 in the week, down 1,485, or 12.0%, compared to the previous week.

A claimant may have filed BOTH a regular initial claim and a PUA initial claim.

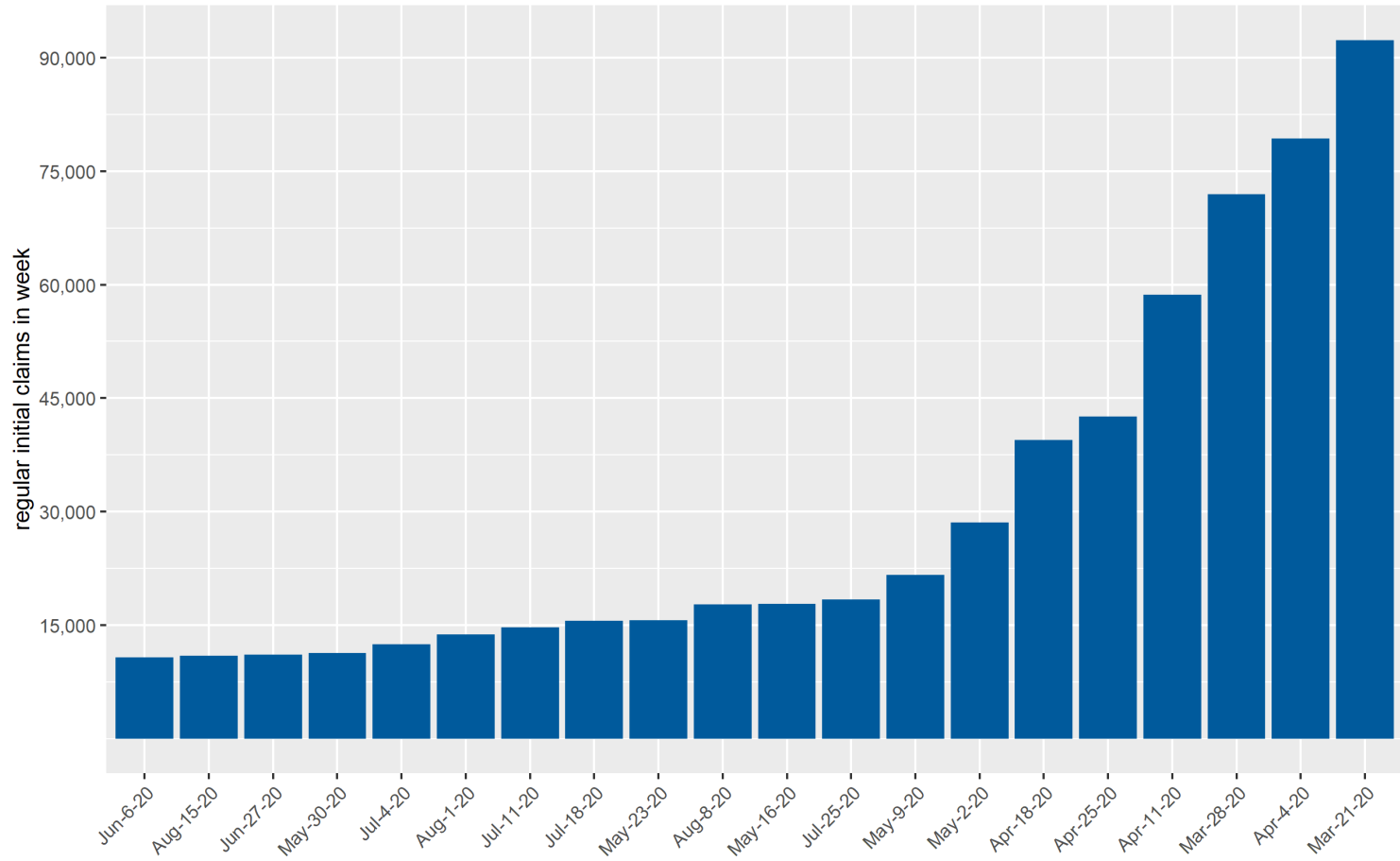
State of Nevada Weekly Initial Claims for Unemployment Insurance by program



Source: ETA 539

State of Nevada Initial Claims All-Time Weekly Highs

State of Nevada Weekly Initial Claims
highest 20 weeks in state history



Source: ETA 539

UI Continued Claims by Week

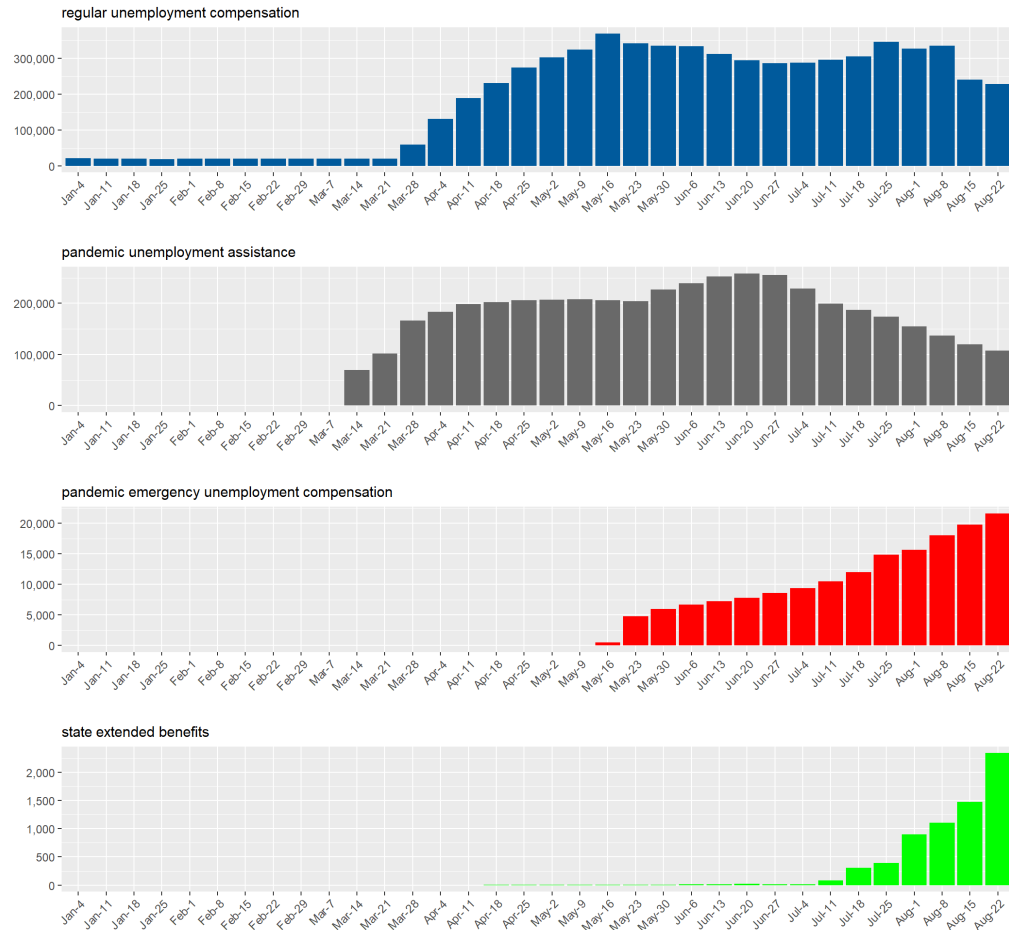
Regular continued claims totaled 228,203 in the week, down 12,143 claims, or 5.1%, compared to the previous week.

Pandemic Unemployment Assistance continued claims totaled 107,334 in the week, down 12,862 claims, or 10.7%, compared to the previous week. PUA continued claims are backdated to show the weeks PUA was claimed.

Pandemic Emergency Unemployment Compensation claims totaled 21,635 in the week, up 1,837 claims, or 9.3%, compared to the previous week.

State Extended Benefit claims totaled 2,338 in the week, up 861 claims, or 58.3%, compared to the previous week.

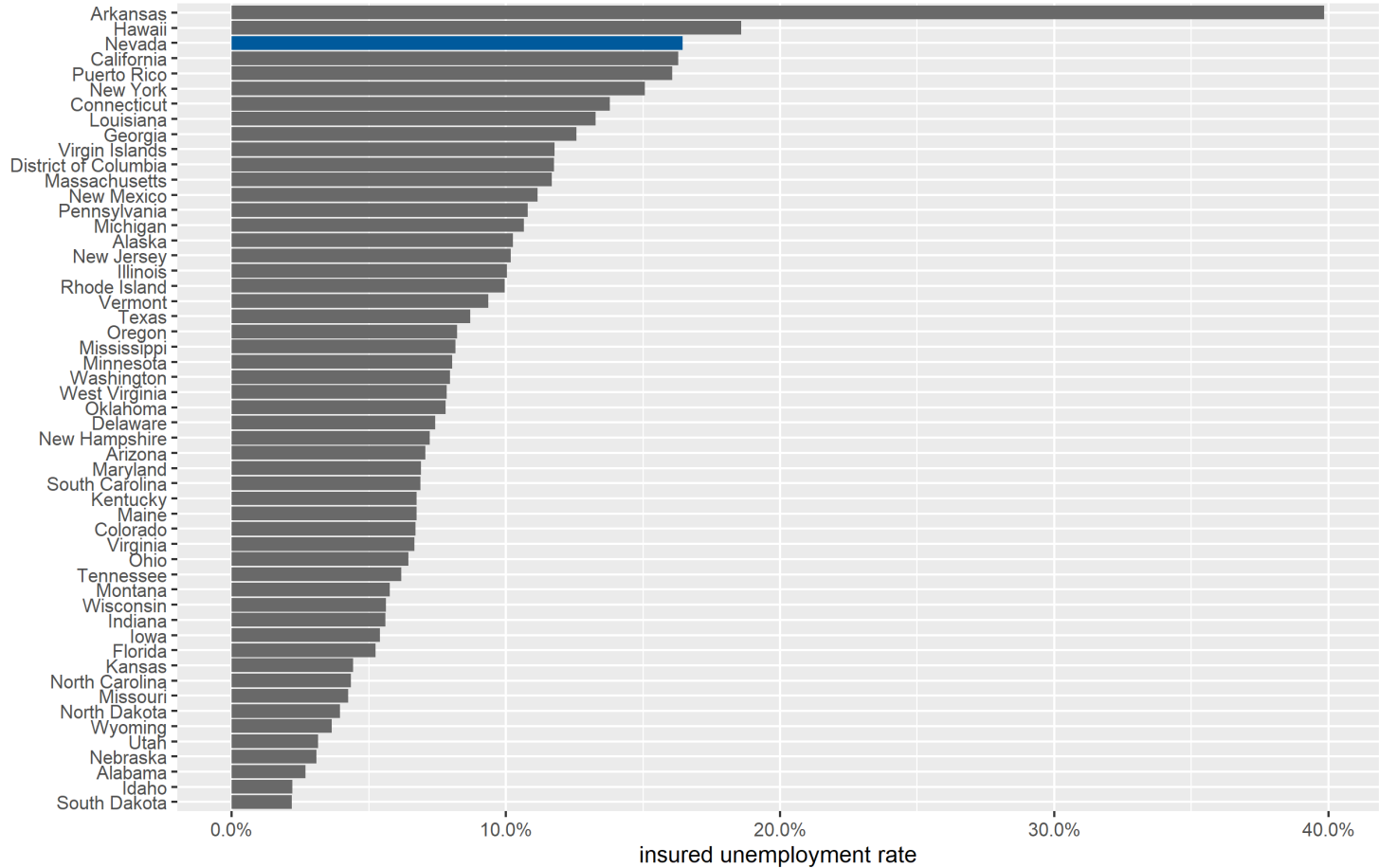
State of Nevada Weekly Continued Claims for Unemployment Insurance by program



Source: ETA 539

Insured Unemployment Rate

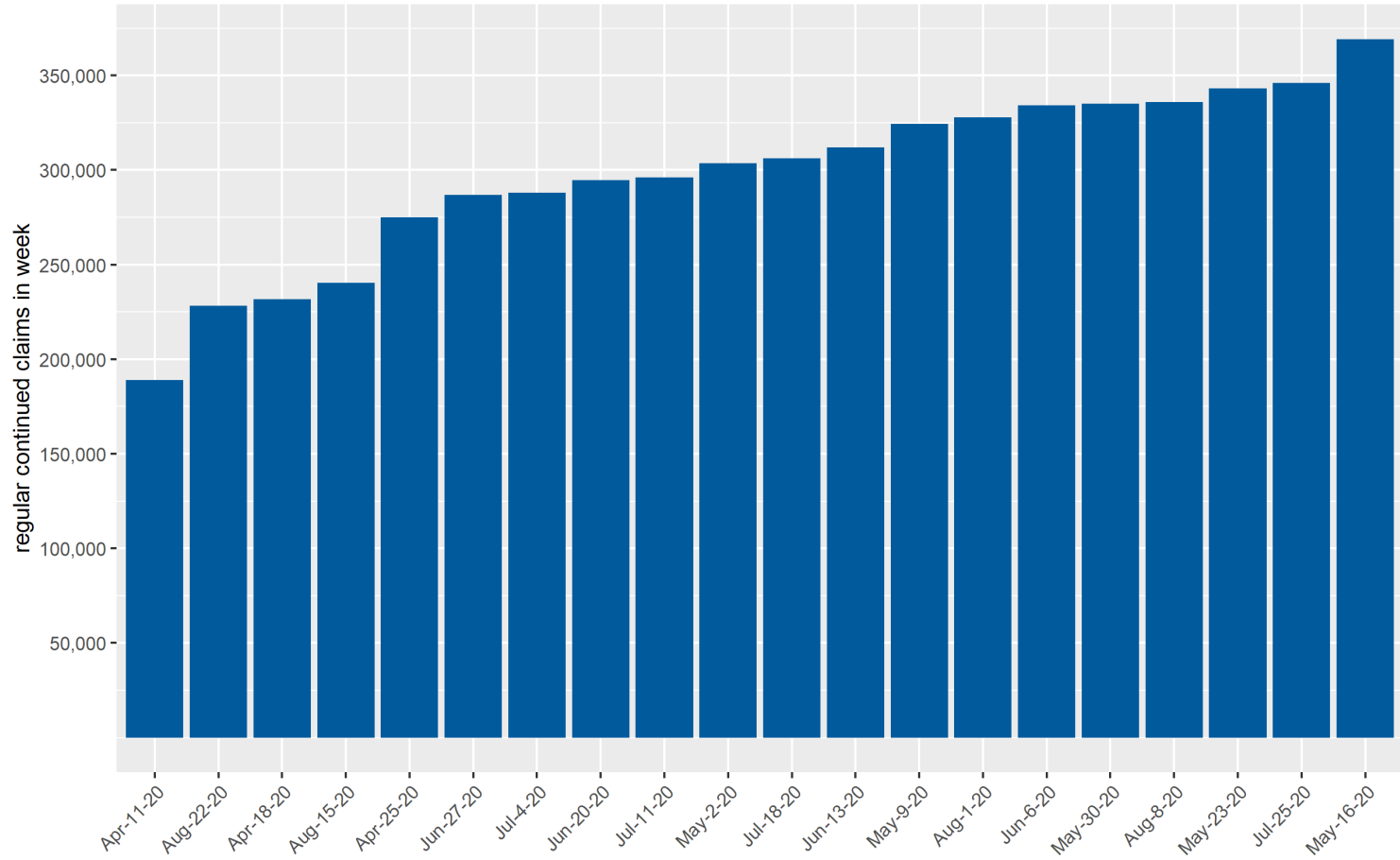
Insured Unemployment Rate by State
weekly rate by state for most recent available week



*Arkansas IUR is likely a result of data entry error.
Source: ETA 539

State of Nevada Continued Claims All-Time Weekly Highs

State of Nevada Weekly Continued Claims
highest 20 weeks in state history



Source: ETA 539

UI Trust Fund Status

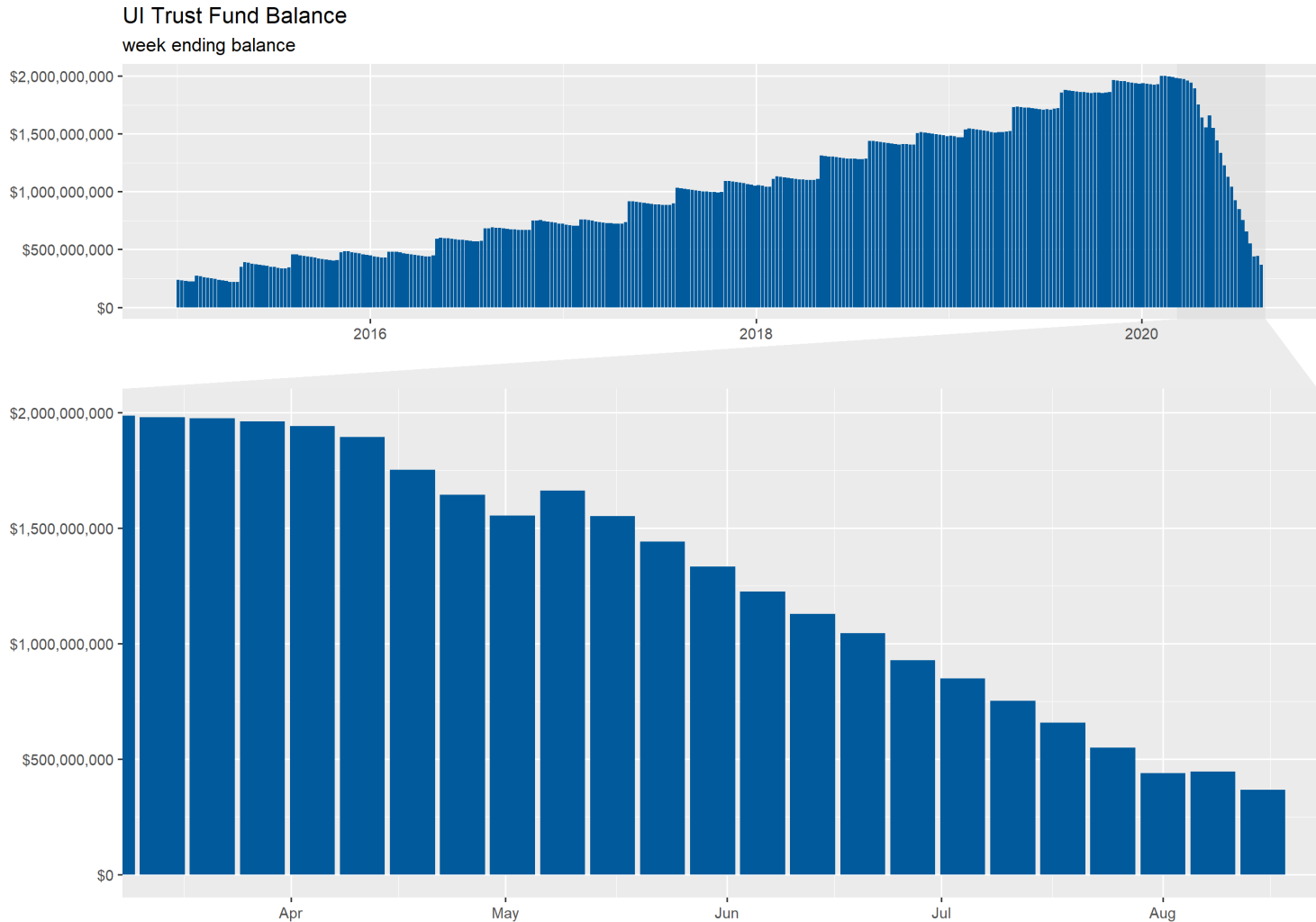
UI Trust Fund Balance & Payment Activity

Reported totals and amounts for week ending 8/22/2020

This Trust Fund balance is the end of week balance from DETR Financial Management reports. Due to lags in reporting of transactions and adjustments, week-to-week totals may change. Weeks of benefits remaining is calculated by using last week's regular UI payments total.

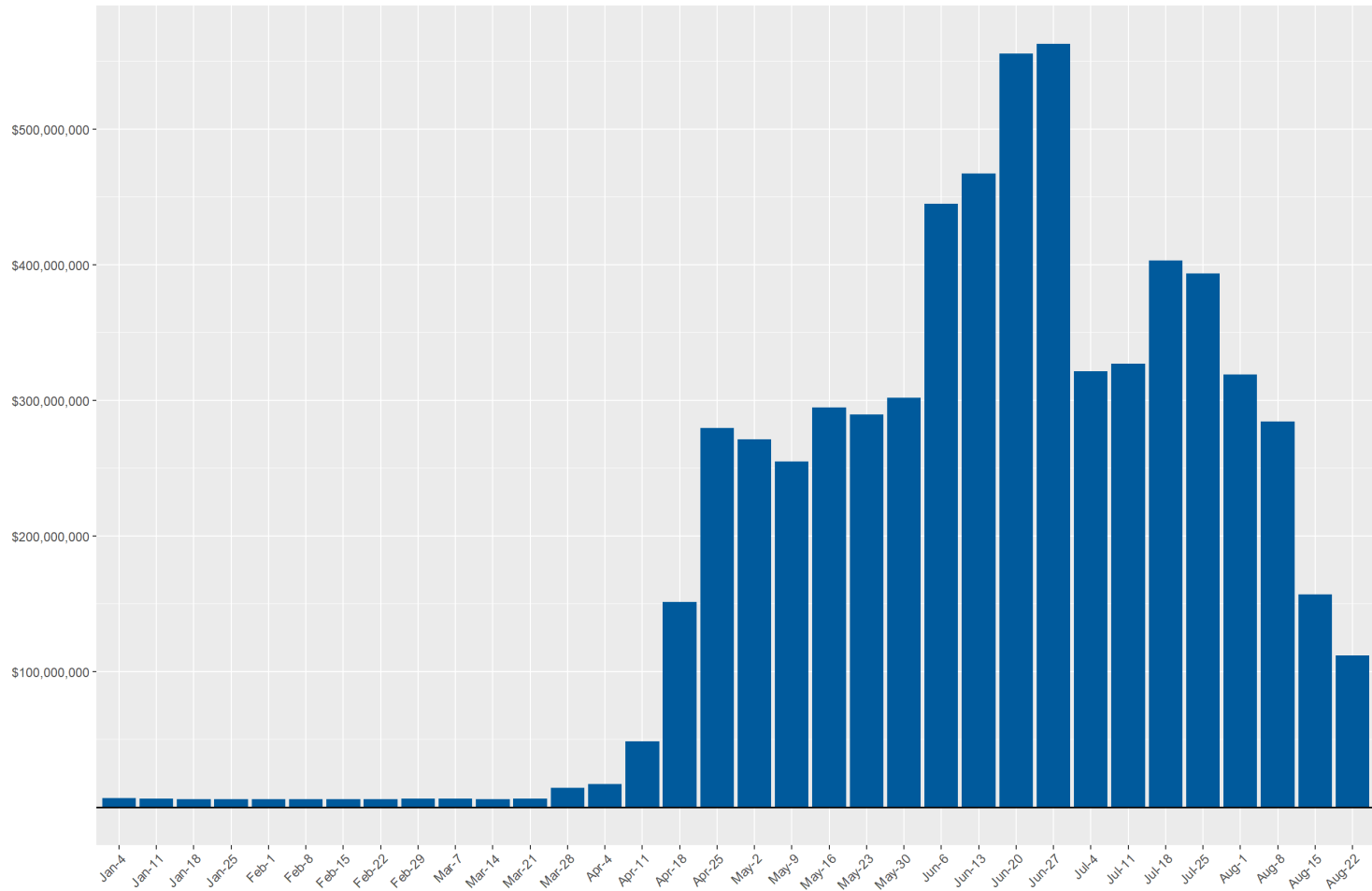
Measure	Current Week	Previous Week	Change from Previous Week	Year-to-Date
Trust Fund Balance	\$295,041,362	\$365,908,612	-\$70,867,250	-
Weeks of Benefits in Trust Fund	4.54	4.23	0.31	-
Regular UI Payments	\$64,938,917	\$86,508,505	-\$21,569,588	\$2,147,941,752
Regular-FPUC Payments	\$9,632,880	\$28,205,820	-\$18,572,940	\$2,837,938,800
PEUC Payments	\$5,069,598	\$5,212,080	-\$142,482	\$47,287,294
PUA Payments	\$18,351,076	\$22,196,042	-\$3,844,966	\$478,944,875
PUA-FPUC Payments	\$13,320,900	\$14,236,680	-\$915,780	\$827,628,305
SEB Payments	\$390,678	\$294,041	\$96,637	\$1,056,418
All Programs	\$111,704,049	\$156,653,168	-\$44,949,119	\$6,340,797,445

Trust Fund Balance



Weekly Payments

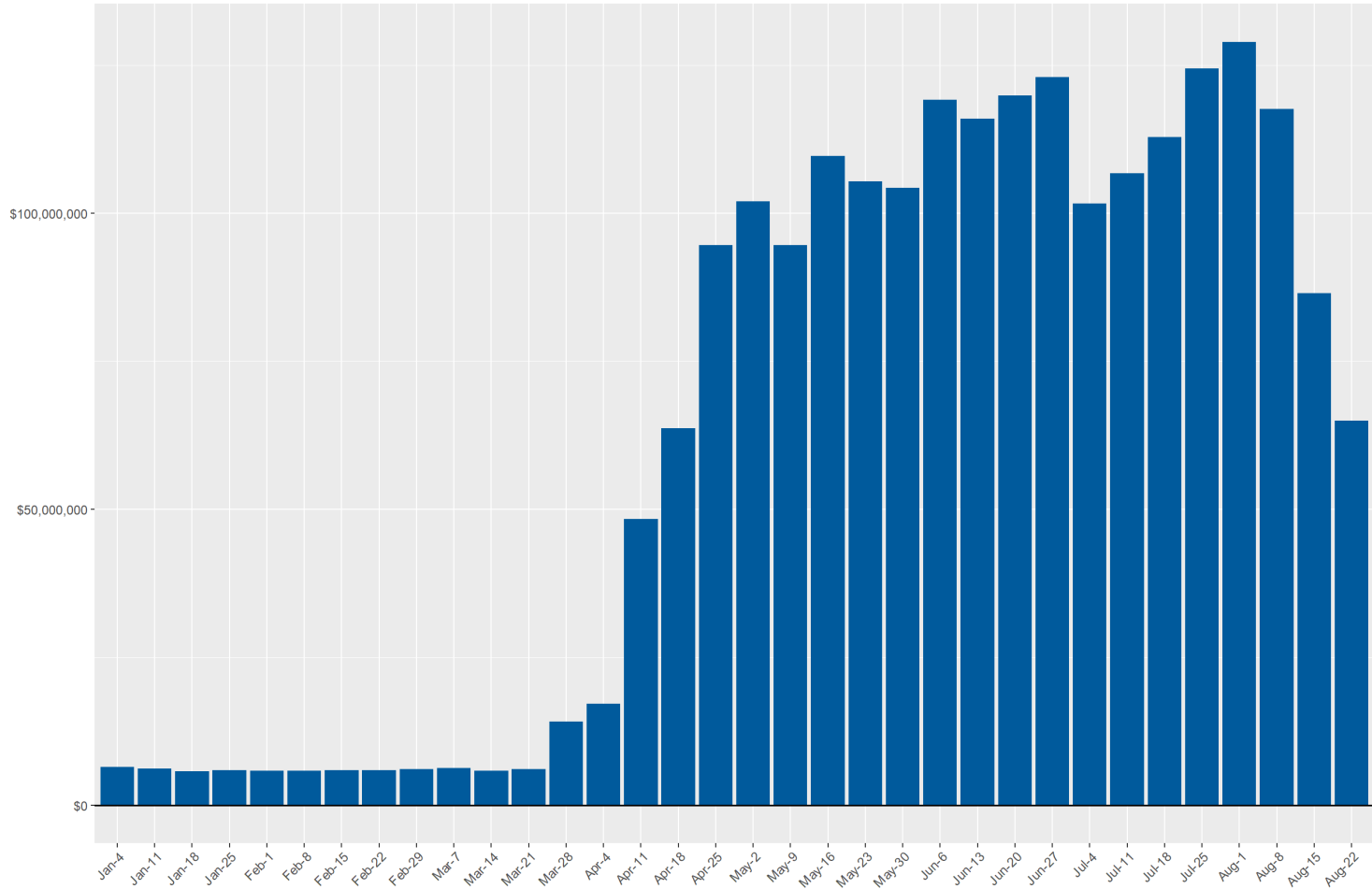
Unemployment Insurance Weekly Payments
compensation total for all programs



Source: DETR Internal Reporting

Weekly Payments by Program (Regular UI)

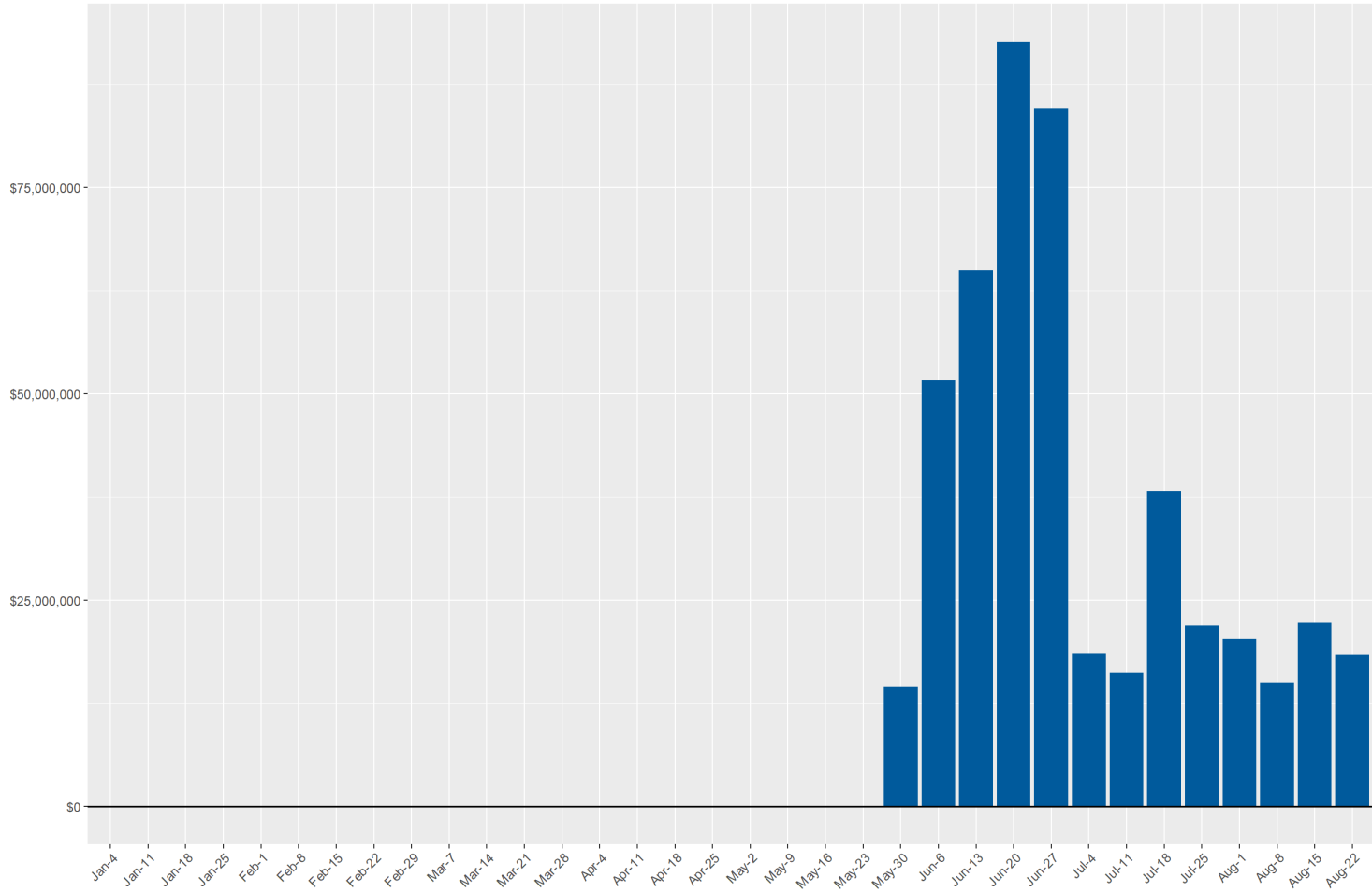
Unemployment Insurance Weekly Payments
regular unemployment insurance compensation



Source: DETR Internal Reporting

Weekly Payments by Program (PUA)

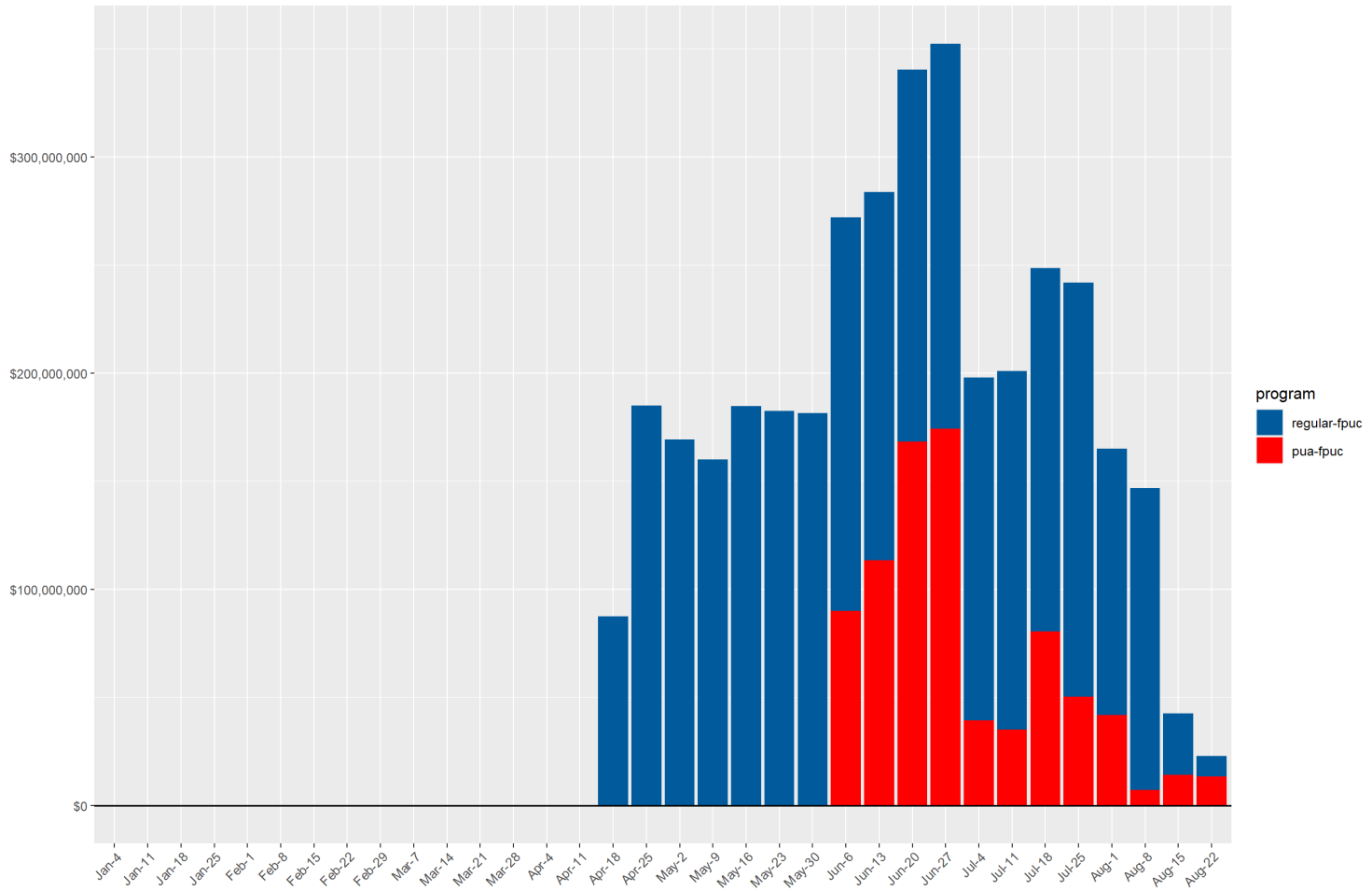
Unemployment Insurance Weekly Payments
pandemic unemployment assistance compensation



Source: DETR Internal Reporting

Weekly Payments by Program (FPUC)

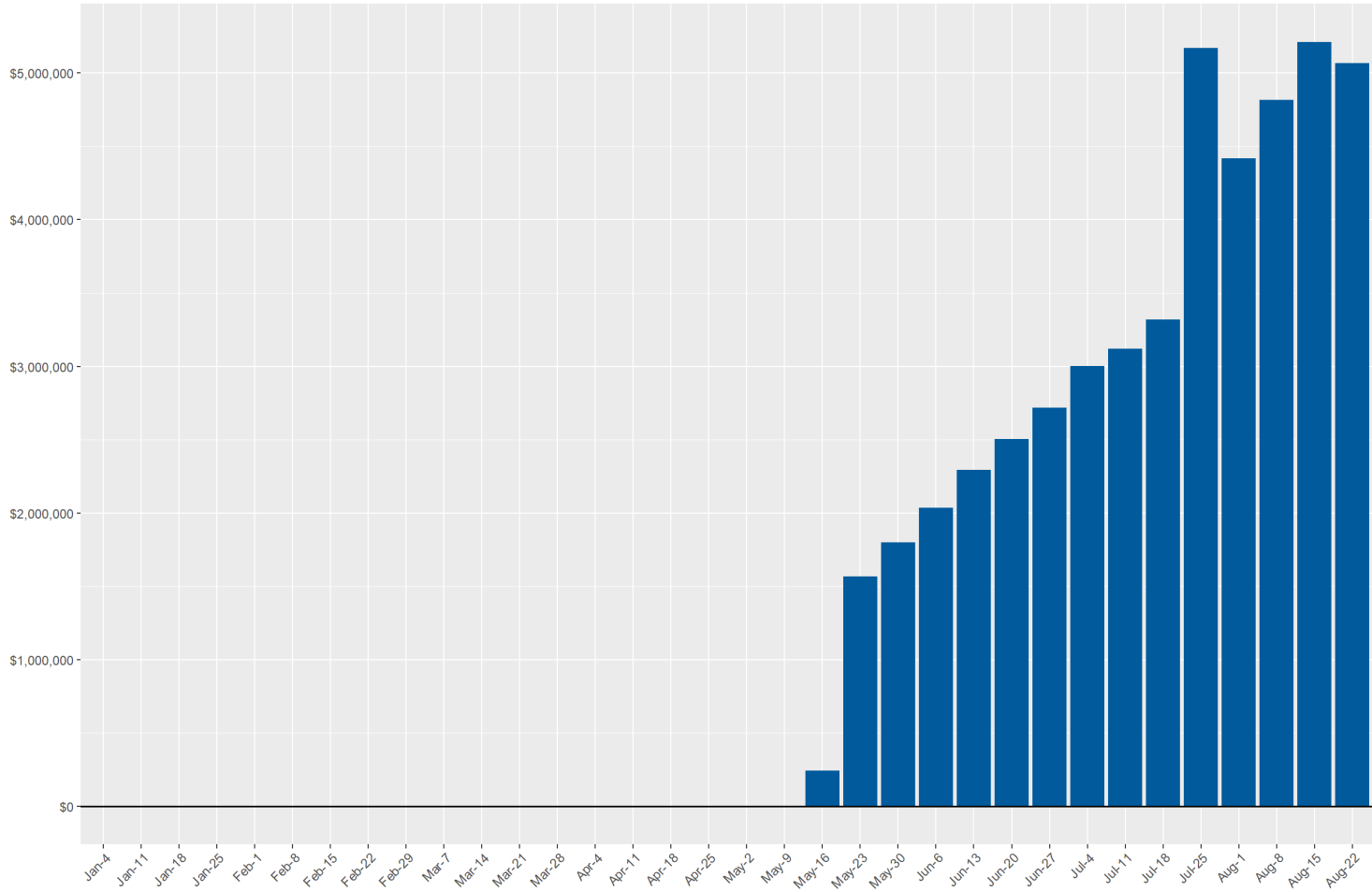
Unemployment Insurance Weekly Payments
federal pandemic unemployment compensation



Source: DETR Internal Reporting

Weekly Payments by Program (PEUC)

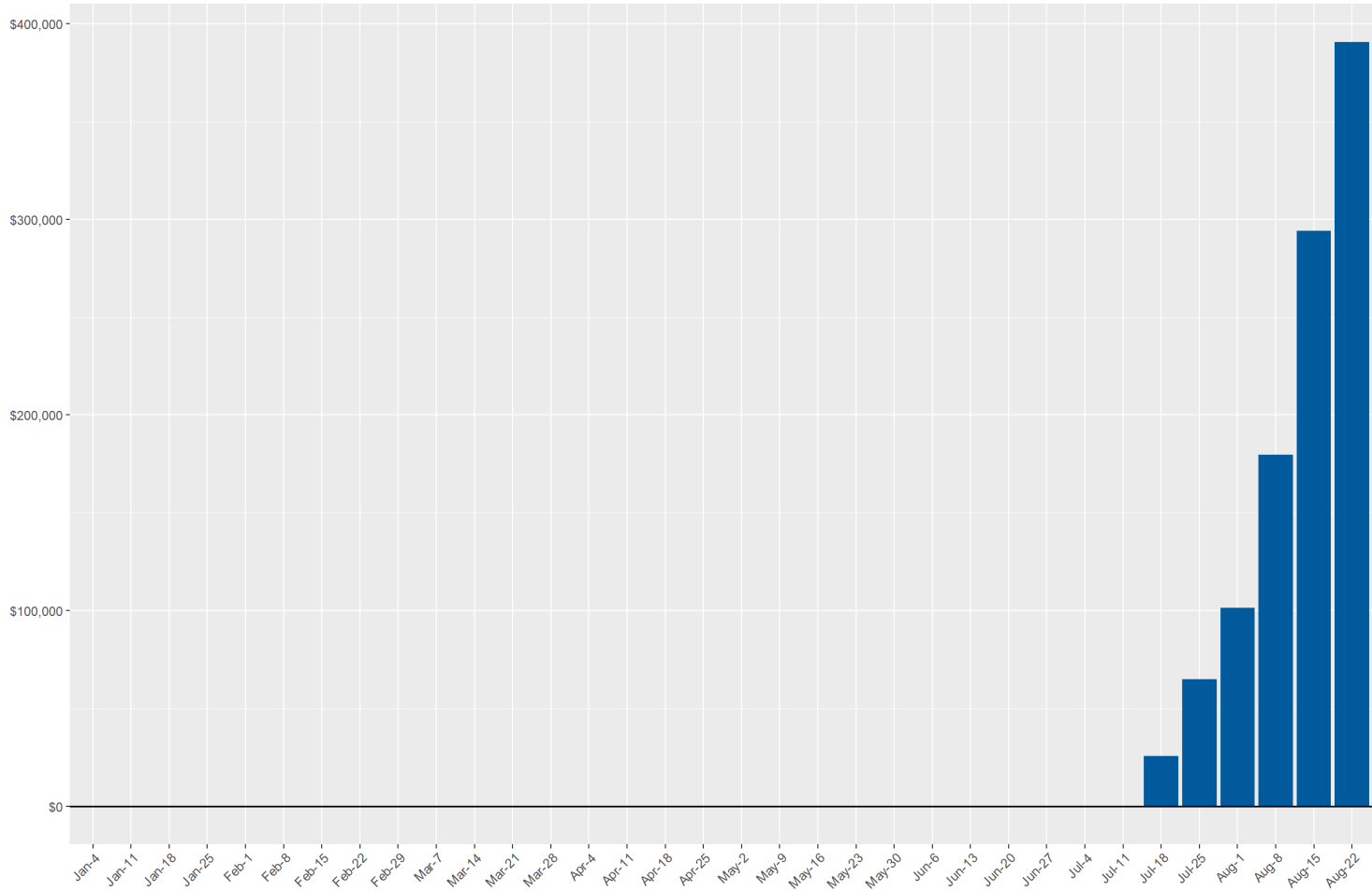
Unemployment Insurance Weekly Payments
federal pandemic emergency unemployment compensation



Source: DETR Internal Reporting

Weekly Payments by Program (SEB)

Unemployment Insurance Weekly Payments
state extended benefits compensation



Source: DETR Internal Reporting

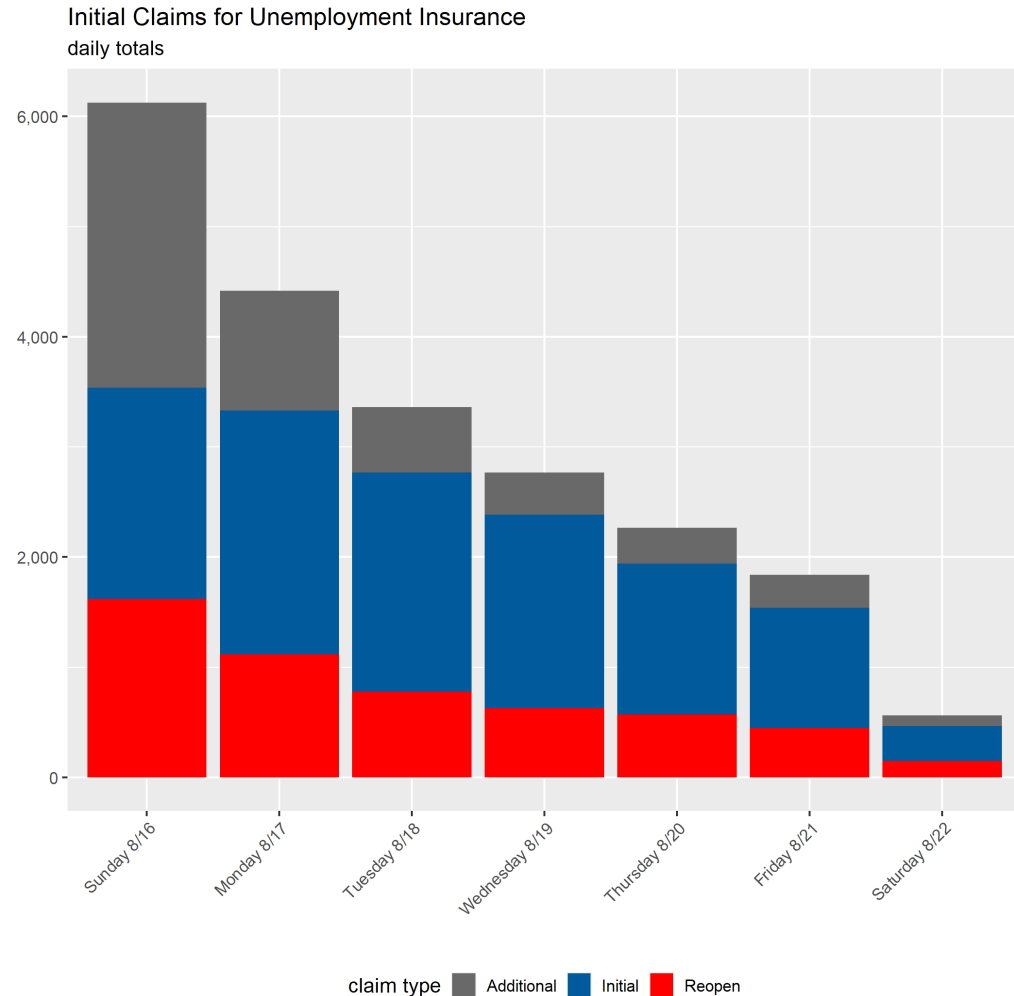
UI Daily Claim Statistics (Regular UC)

UI Initial Claims by Day for Week Ending 8/22/2020

Initial claims by type and filing method for week ending 8/22/2020.

Initial claims include new, additional, and reopened (see end of document for glossary of terms). Reopened claims are not counted in federal reporting totals.

Daily data is unofficial and is unlikely to match federal reporting totals due to reporting differences.



Source: DETR Internal Reporting

UI Initial Claims by Day for Week Ending 8/22/2020

Claim Type	Filing Method	Sunday 8/16	Monday 8/17	Tuesday 8/18	Wednesday 8/19	Thursday 8/20	Friday 8/21	Saturday 8/22	Total
Claim Type & Filing Method									
Additional	Internet	761	460	335	241	240	227	66	2,330
Additional	Phone	1,828	627	259	143	83	71	27	3,038
Initial	Internet	1,917	1,947	1,741	1,531	1,143	892	317	9,488
Initial	Phone	1	269	251	226	228	200	2	1,177
Reopen	Internet	1,590	1,024	698	548	470	379	144	4,853
Reopen	Phone	29	92	78	78	100	69	4	450
Filing Method									
Total	Internet	4,268	3,431	2,774	2,320	1,853	1,498	527	16,671
Total	Phone	1,858	988	588	447	411	340	33	4,665
Total									
Total	All	6,126	4,419	3,362	2,767	2,264	1,838	560	21,336

UI Initial Claims by Day Comparison to Previous Week

Previous Week

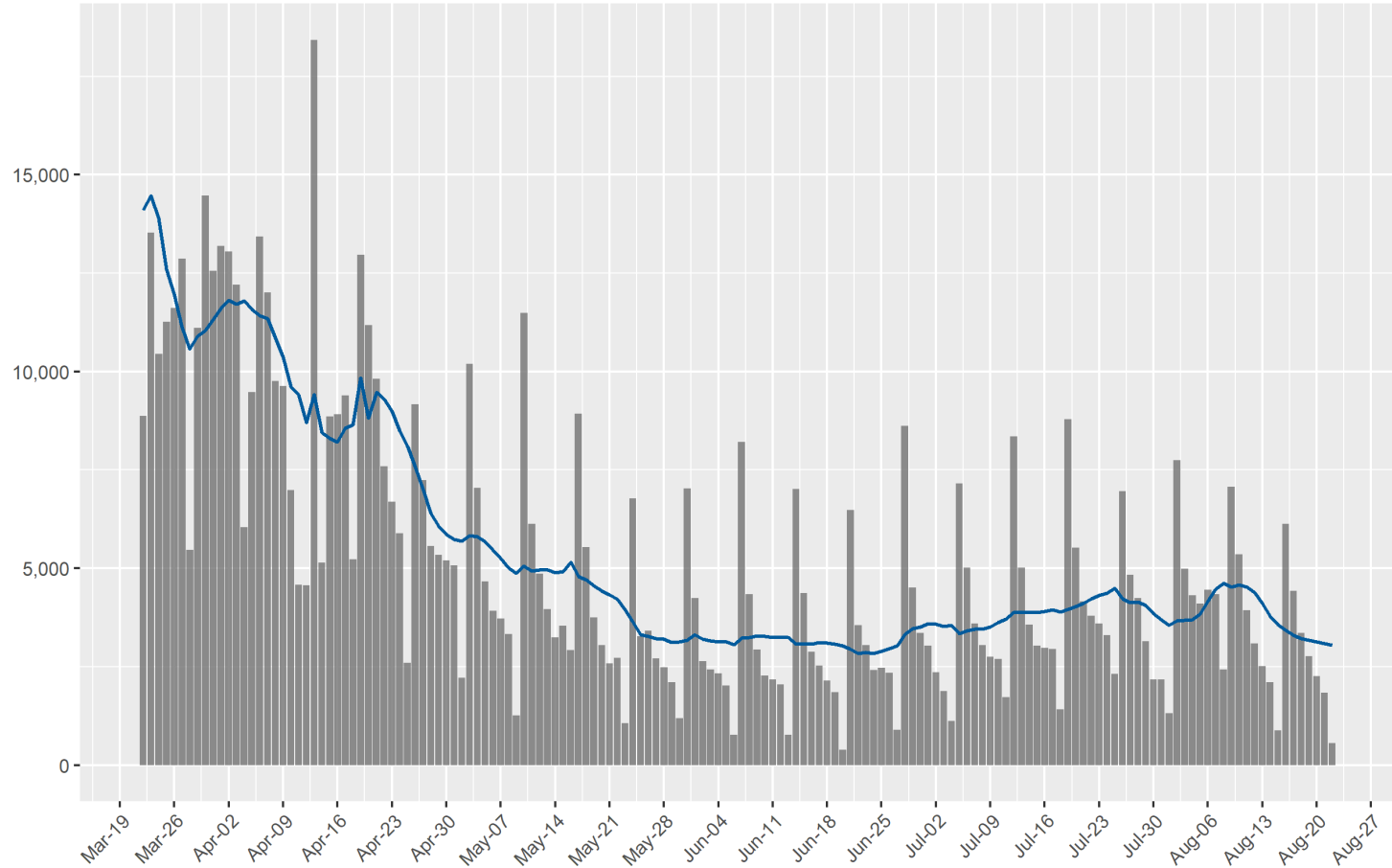
Claim Type	Sunday 8/9	Monday 8/10	Tuesday 8/11	Wednesday 8/12	Thursday 8/13	Friday 8/14	Saturday 8/15	Total
Additional	2,826	1,193	649	488	374	320	163	6,013
Initial	2,434	2,832	2,434	1,824	1,554	1,291	527	12,896
Reopen	1,809	1,326	847	773	581	488	198	6,022
Total	7,069	5,351	3,930	3,085	2,509	2,099	888	24,931

Current Week

Claim Type	Sunday 8/16	Monday 8/17	Tuesday 8/18	Wednesday 8/19	Thursday 8/20	Friday 8/21	Saturday 8/22	Total
Additional	2,589	1,087	594	384	323	298	93	5,368
Initial	1,918	2,216	1,992	1,757	1,371	1,092	319	10,665
Reopen	1,619	1,116	776	626	570	448	148	5,303
Total	6,126	4,419	3,362	2,767	2,264	1,838	560	21,336

UI Initial Claims Daily Series

Initial Claims for Unemployment Insurance
daily filings since 3/22; line represents 7 day average



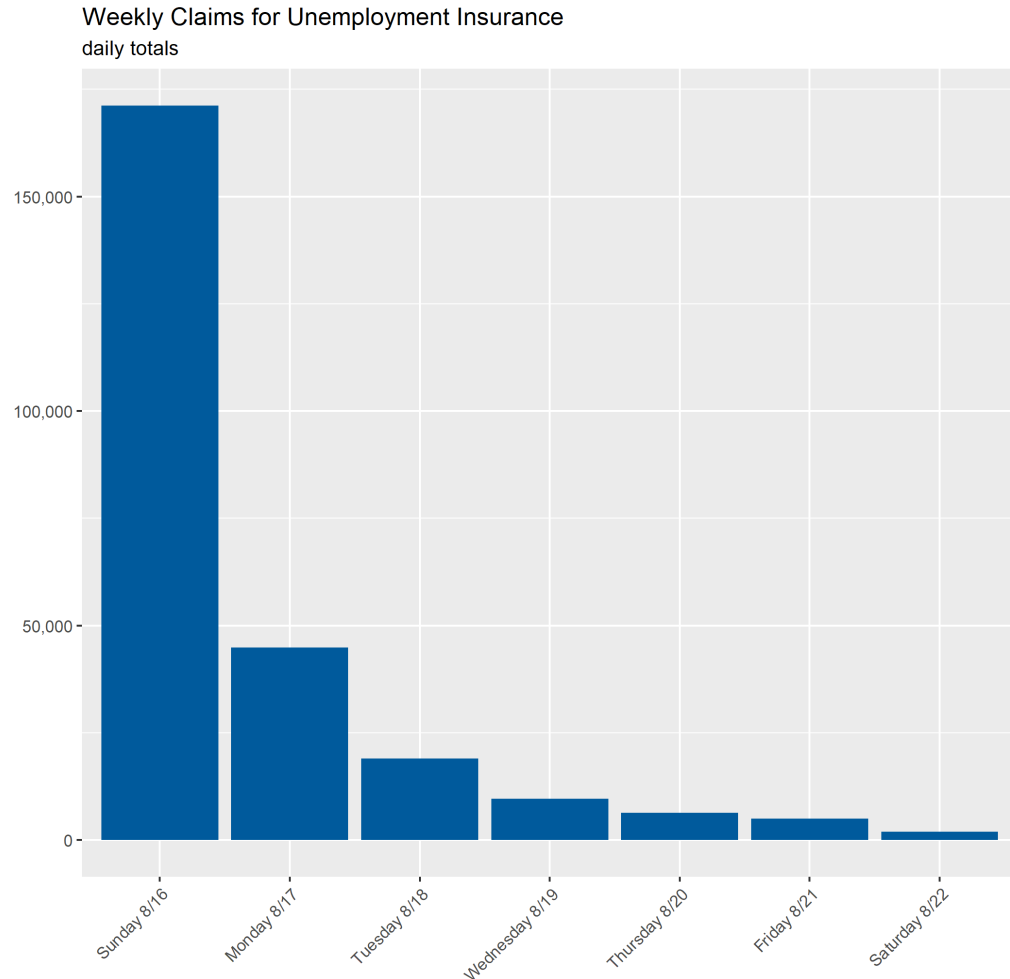
Source: DETR Internal Reporting

UI Continued Claims by Day for Week Ending 8/22/2020

Continued claims by type and filing method for week ending 8/22/2020.

Sunday is the beginning of new claim week and when claimants *typically* file their weekly claim.

Daily data is unofficial and is unlikely to match federal reporting totals due to reporting differences.



Source: DETR Internal Reporting

UI Continued Claims by Day for Week Ending 8/22/2020

Claim Type	Filing Method	Sunday 8/16	Monday 8/17	Tuesday 8/18	Wednesday 8/19	Thursday 8/20	Friday 8/21	Saturday 8/22	Total
Claim Type & Filing Method									
Weekly	Internet	158,596	43,593	17,440	8,472	5,240	3,913	1,788	239,042
Weekly	Phone	12,612	1,329	1,606	1,111	1,107	1,061	102	18,928
Filing Method									
Total	Internet	158,596	43,593	17,440	8,472	5,240	3,913	1,788	239,042
Total	Phone	12,612	1,329	1,606	1,111	1,107	1,061	102	18,928
Total									
Total	All	171,208	44,922	19,046	9,583	6,347	4,974	1,890	257,970

UI Continued Claims by Day Comparison

Last Week

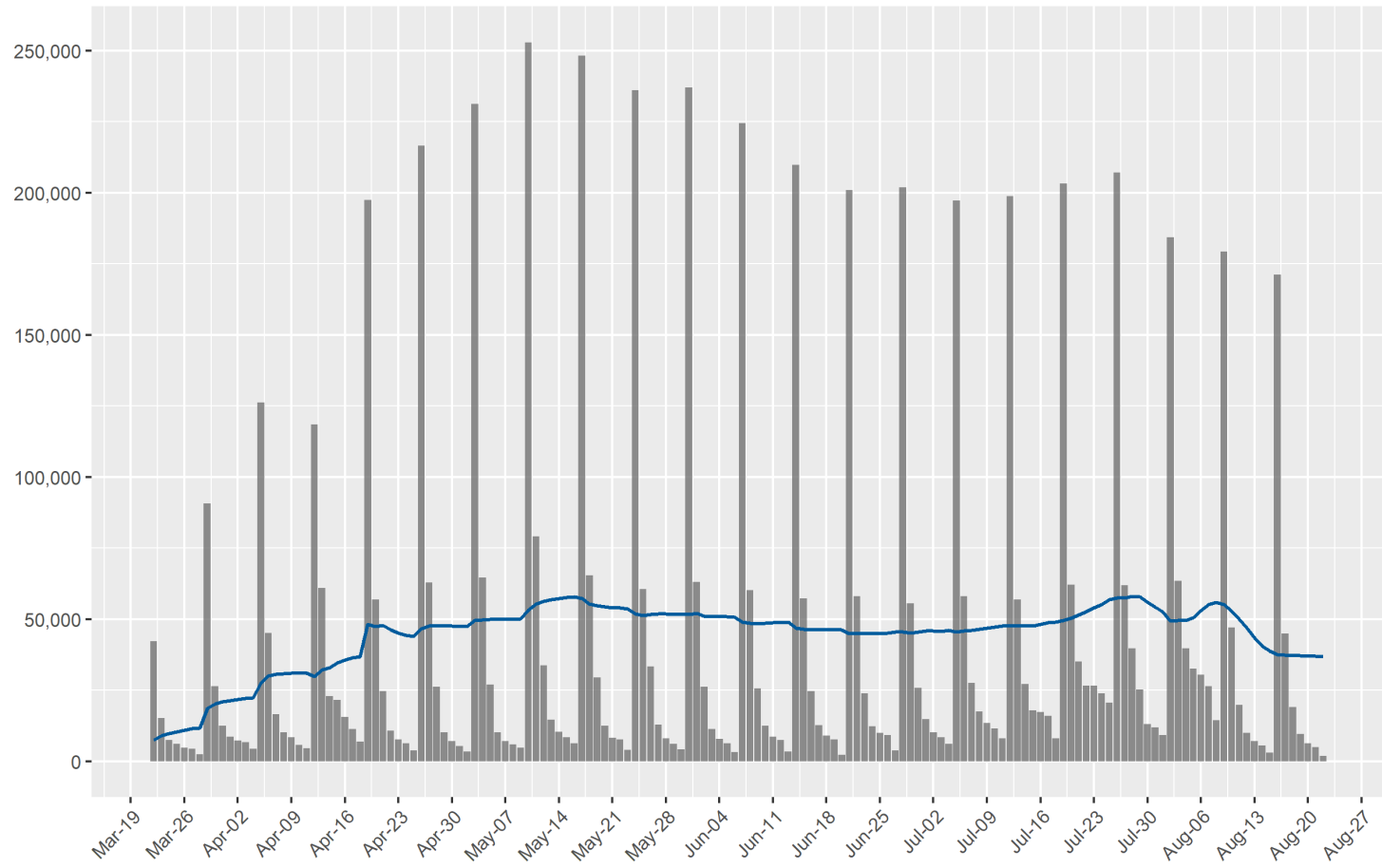
Claim Type	Sunday 8/9	Monday 8/10	Tuesday 8/11	Wednesday 8/12	Thursday 8/13	Friday 8/14	Saturday 8/15	Total
Weekly	179,234	47,059	19,806	9,922	7,092	5,498	3,048	271,659
Total	179,234	47,059	19,806	9,922	7,092	5,498	3,048	271,659

Current Week

Claim Type	Sunday 8/16	Monday 8/17	Tuesday 8/18	Wednesday 8/19	Thursday 8/20	Friday 8/21	Saturday 8/22	Total
Weekly	171,208	44,922	19,046	9,583	6,347	4,974	1,890	257,970
Total	171,208	44,922	19,046	9,583	6,347	4,974	1,890	257,970

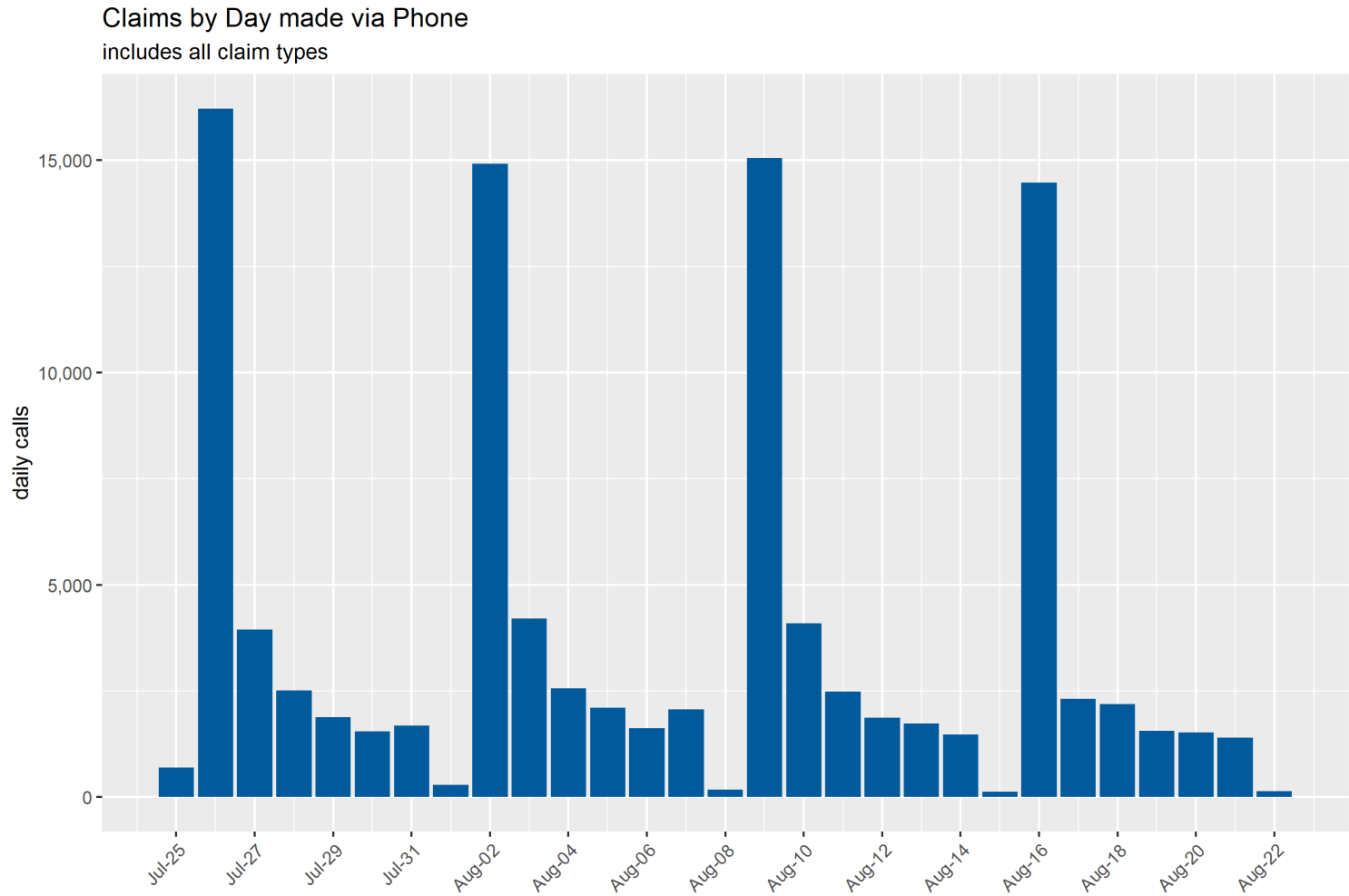
UI Continued Claims Daily Series

Continued Claims for Unemployment Insurance
daily filings since 3/22; line represents 7 day average



Source: DETR Internal Reporting

Daily Phone Call Volume (All Claim Types)

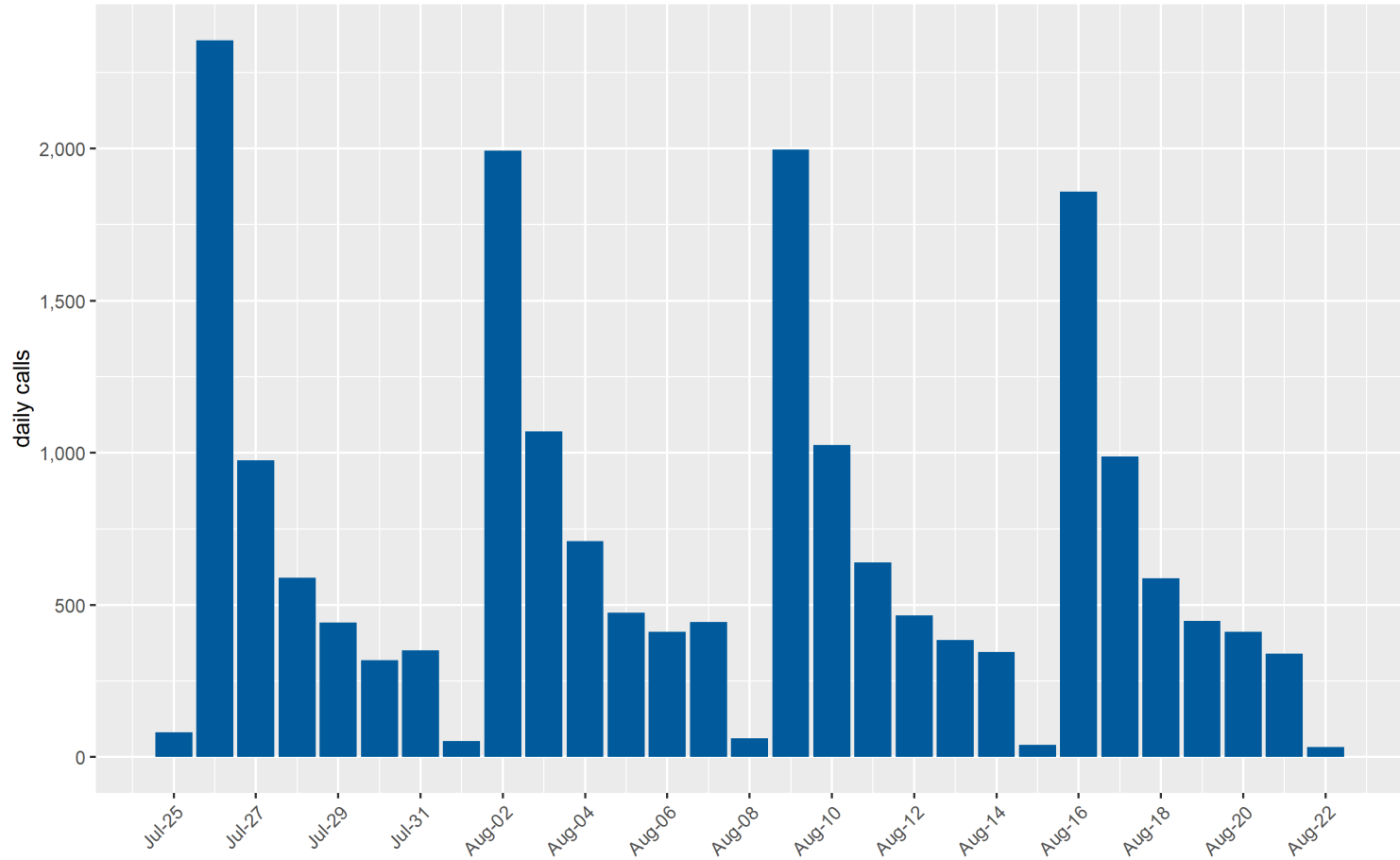


Source: DETR Internal Reporting

Daily Phone Call Volume (Initial Claims)

Claims by Day made via Phone

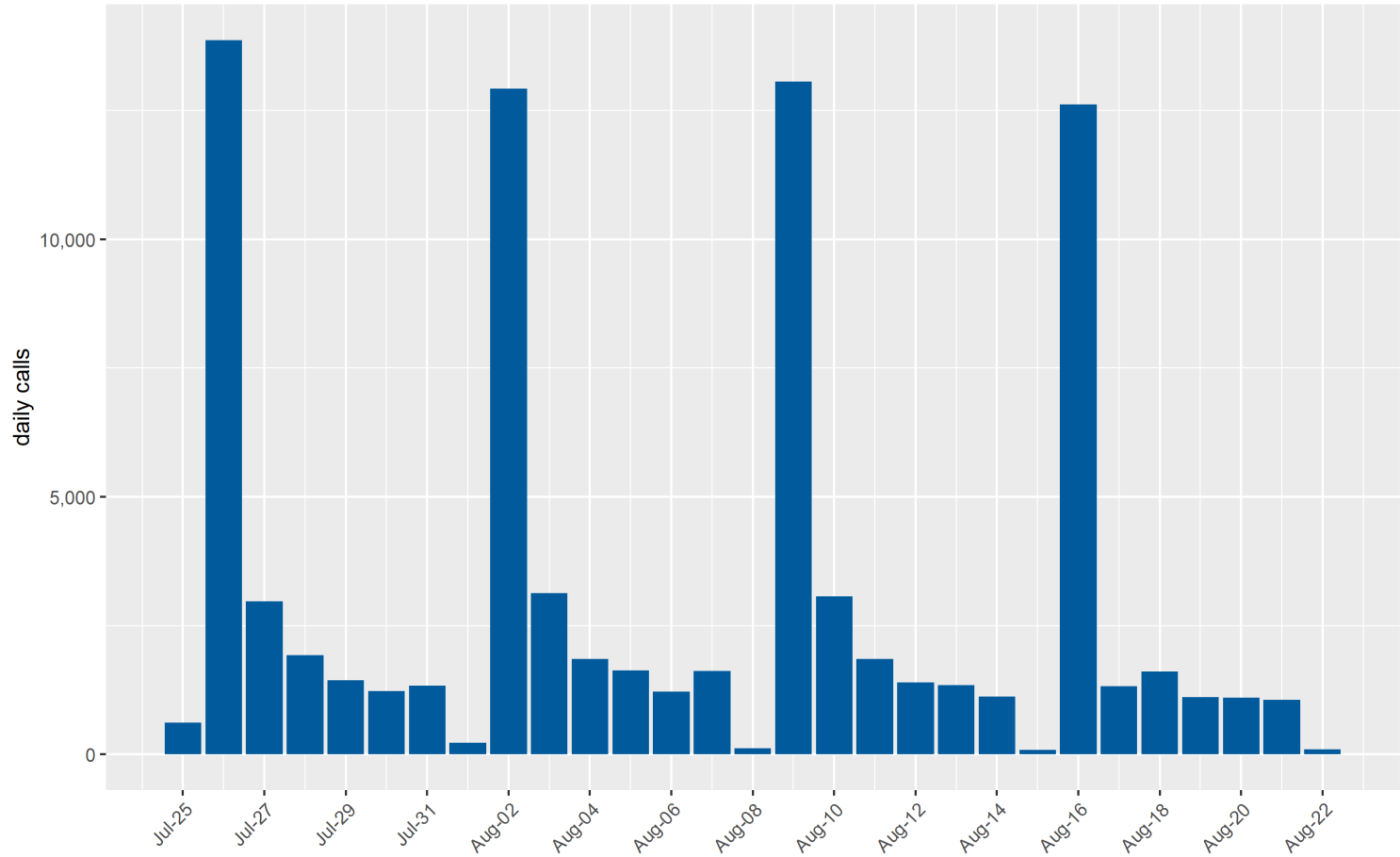
includes all initial claim types



Source: DETR Internal Reporting

Daily Phone Call Volume (Continued Claims)

Claims by Day made via Phone
includes continued claims only



Source: DETR Internal Reporting

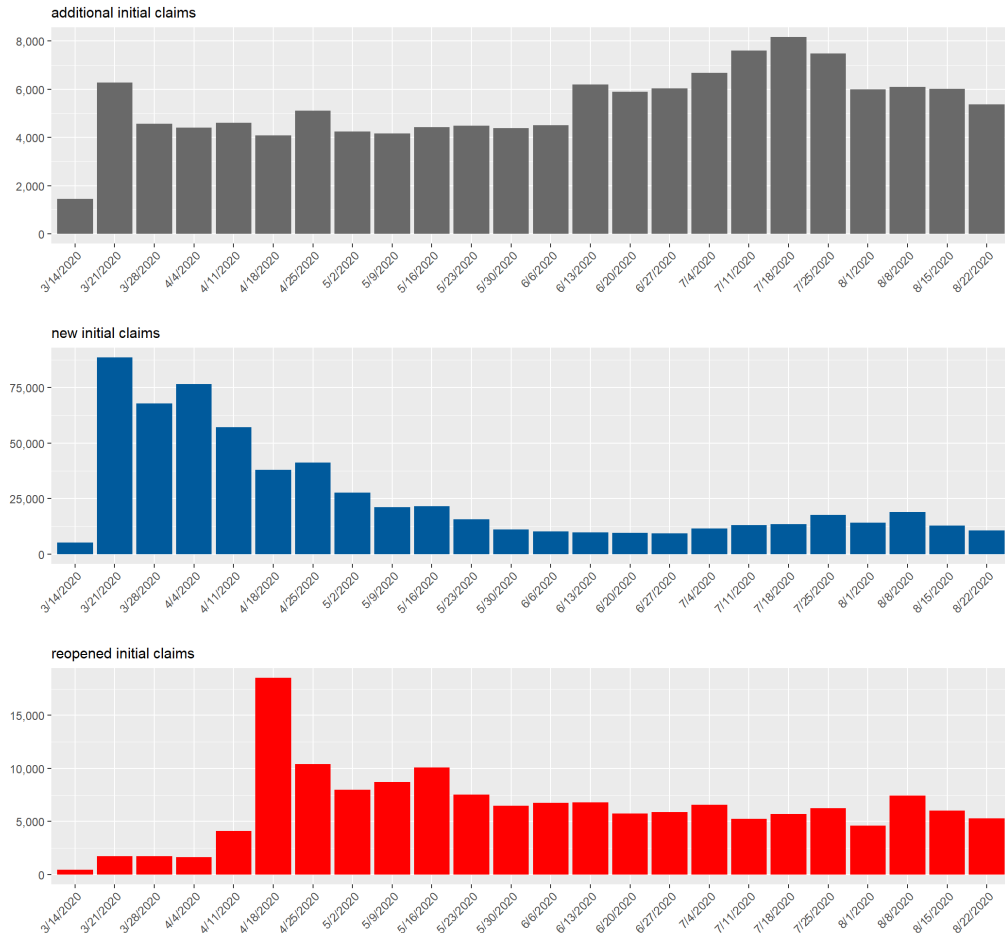
UI Weekly Statistics (Regular UC)

UI Initial Claims by Week

Initial claims totals by type for week ending 8/22/2020.

Weekly data is unofficial and is unlikely to match federal reporting totals due to reporting differences.

Initial Claims for Unemployment Insurance by week ending



Source: DETR Internal Reporting

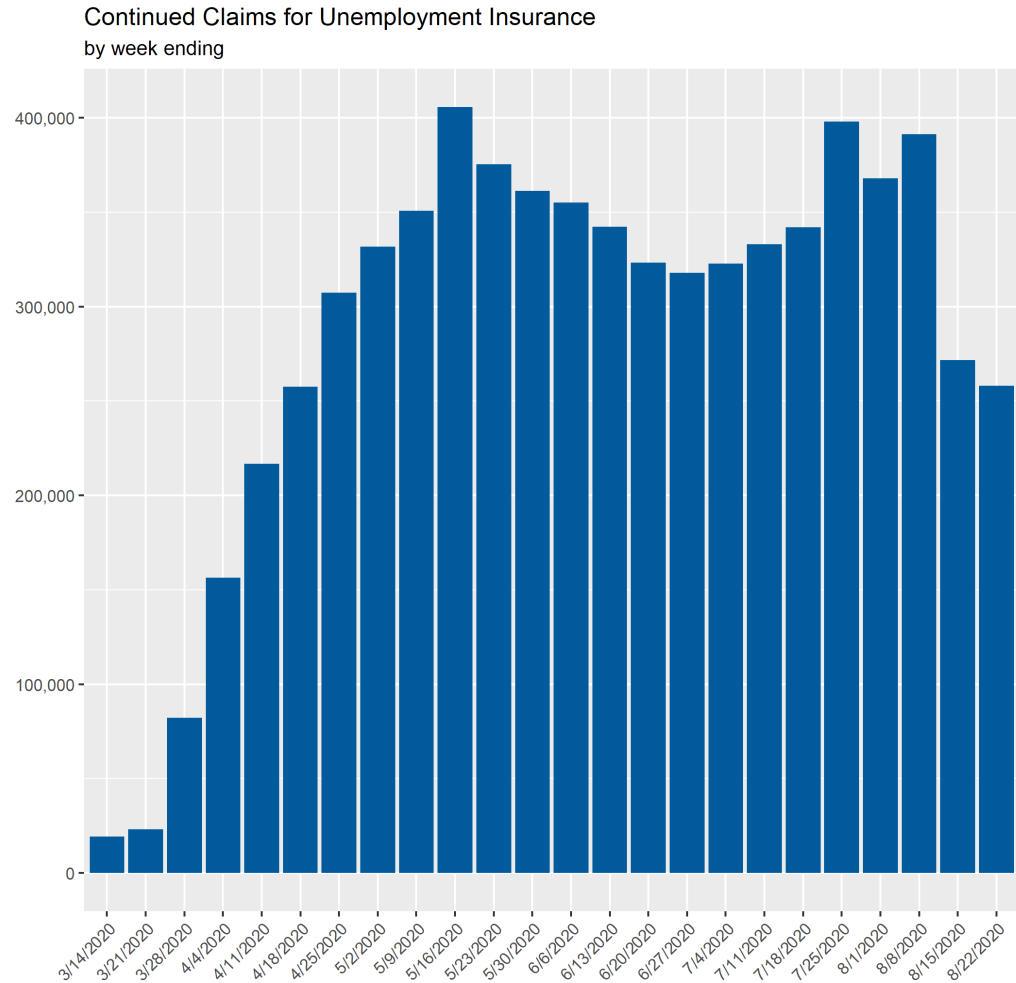
UI Initial Claims by Week

Claim Type	Filing Method	2020-06-27	2020-07-04	2020-07-11	2020-07-18	2020-07-25	2020-08-01	2020-08-08	2020-08-15	2020-08-22
Claim Type & Filing Method										
Additional	CSS	2,108	2,577	3,485	4,240	3,530	2,494	2,831	2,855	2,330
Additional	IVR	3,924	4,108	4,110	3,923	3,952	3,498	3,252	3,158	3,038
Initial	CSS	8,089	10,619	11,770	12,242	16,613	13,267	17,552	11,724	9,488
Initial	IVR	1,218	993	1,368	1,176	1,131	994	1,312	1,172	1,177
Reopen	CSS	5,314	6,048	4,669	5,153	5,540	3,995	6,838	5,454	4,853
Reopen	IVR	553	522	566	546	714	592	600	568	450
Filing Method										
Total	CSS	15,511	19,244	19,924	21,635	25,683	19,756	27,221	20,033	16,671
Total	IVR	5,695	5,623	6,044	5,645	5,797	5,084	5,164	4,898	4,665
Total										
Total	All	21,206	24,867	25,968	27,280	31,480	24,840	32,385	24,931	21,336

UI Continued Claims by Week

Continued claims totals for week ending 8/22/2020.

Weekly data is unofficial and is unlikely to match federal reporting totals due to reporting differences.



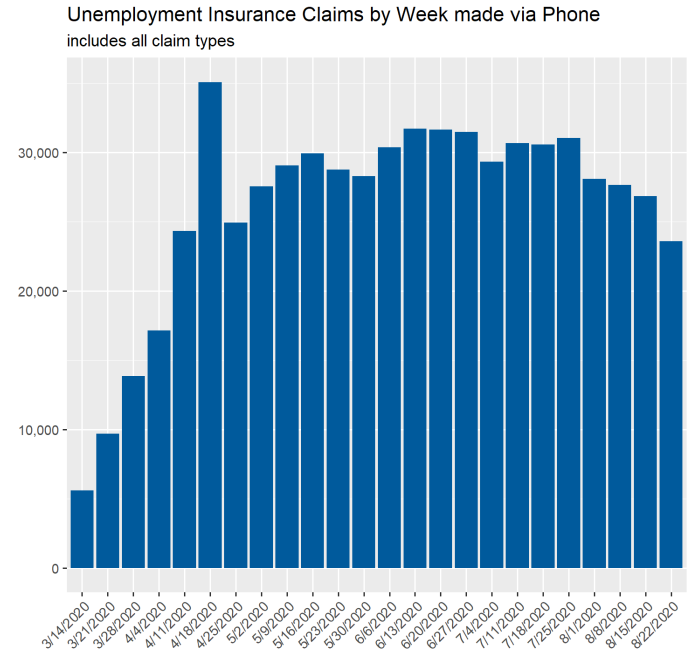
Source: DETR Internal Reporting

UI Continued Claims by Week

Claim Type	Filing Method	2020-06-27	2020-07-04	2020-07-11	2020-07-18	2020-07-25	2020-08-01	2020-08-08	2020-08-15	2020-08-22
Claim Type & Filing Method										
Weekly	CSS	292,069	299,012	308,511	317,192	372,834	344,986	368,878	249,723	239,042
Weekly	IVR	25,772	23,693	24,626	24,933	25,256	22,994	22,494	21,936	18,928
Filing Method										
Total	CSS	292,069	299,012	308,511	317,192	372,834	344,986	368,878	249,723	239,042
Total	IVR	25,772	23,693	24,626	24,933	25,256	22,994	22,494	21,936	18,928
Total										
Total	All	317,841	322,705	333,137	342,125	398,090	367,980	391,372	271,659	257,970

Weekly Call Volume (All Claim Types)

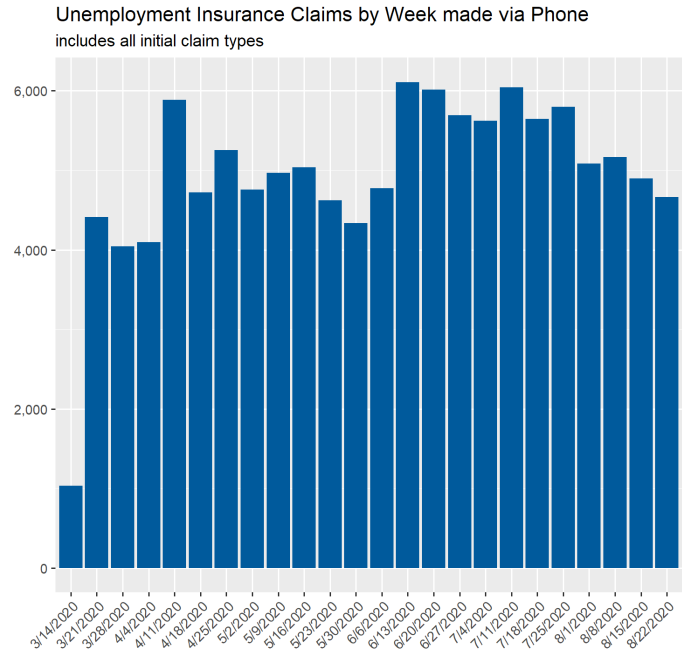
Week	Total Phone Claims	+/- change	% change
3/14/2020	5,619	-	-
3/21/2020	9,685	4,066	72.36%
3/28/2020	13,845	4,160	42.95%
4/4/2020	17,138	3,293	23.78%
4/11/2020	24,334	7,196	41.99%
4/18/2020	35,080	10,746	44.16%
4/25/2020	24,933	-10,147	-28.93%
5/2/2020	27,549	2,616	10.49%
5/9/2020	29,073	1,524	5.53%
5/16/2020	29,936	863	2.97%
5/23/2020	28,742	-1,194	-3.99%
5/30/2020	28,282	-460	-1.60%
6/6/2020	30,369	2,087	7.38%
6/13/2020	31,716	1,347	4.44%
6/20/2020	31,633	-83	-0.26%
6/27/2020	31,467	-166	-0.52%
7/4/2020	29,316	-2,151	-6.84%
7/11/2020	30,670	1,354	4.62%
7/18/2020	30,578	-92	-0.30%
7/25/2020	31,053	475	1.55%
8/1/2020	28,078	-2,975	-9.58%
8/8/2020	27,658	-420	-1.50%
8/15/2020	26,834	-824	-2.98%
8/22/2020	23,593	-3,241	-12.08%



Source: DETR Internal Reporting

Weekly Call Volume (Initial Claims)

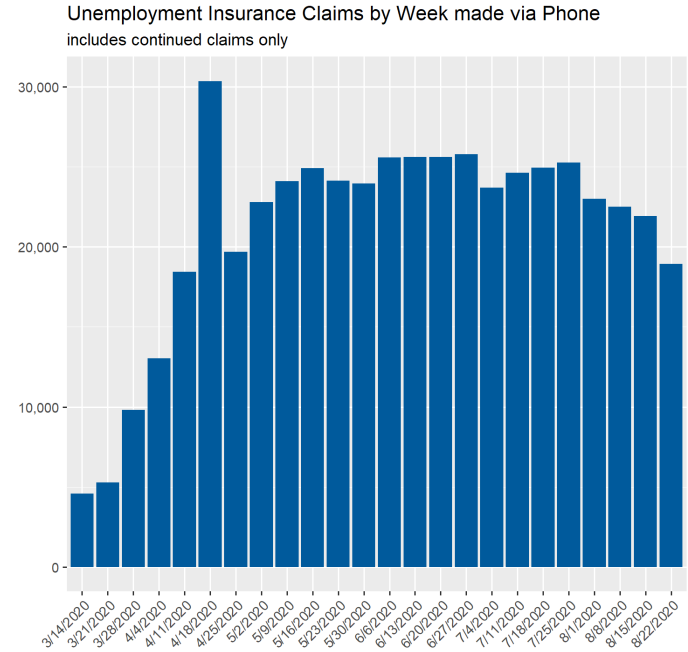
Week	Total Phone Claims	+/- change	% change
3/14/2020	1,033	-	-
3/21/2020	4,413	3,380	327.20%
3/28/2020	4,046	-367	-8.32%
4/4/2020	4,096	50	1.24%
4/11/2020	5,887	1,791	43.73%
4/18/2020	4,724	-1,163	-19.76%
4/25/2020	5,256	532	11.26%
5/2/2020	4,760	-496	-9.44%
5/9/2020	4,965	205	4.31%
5/16/2020	5,036	71	1.43%
5/23/2020	4,622	-414	-8.22%
5/30/2020	4,334	-288	-6.23%
6/6/2020	4,774	440	10.15%
6/13/2020	6,110	1,336	27.98%
6/20/2020	6,016	-94	-1.54%
6/27/2020	5,695	-321	-5.34%
7/4/2020	5,623	-72	-1.26%
7/11/2020	6,044	421	7.49%
7/18/2020	5,645	-399	-6.60%
7/25/2020	5,797	152	2.69%
8/1/2020	5,084	-713	-12.30%
8/8/2020	5,164	80	1.57%
8/15/2020	4,898	-266	-5.15%
8/22/2020	4,665	-233	-4.76%



Source: DETR Internal Reporting

Weekly Call Volume (Continued Claims)

Week	Total Phone Claims	+/- change	% change
3/14/2020	4,586	-	-
3/21/2020	5,272	686	14.96%
3/28/2020	9,799	4,527	85.87%
4/4/2020	13,042	3,243	33.10%
4/11/2020	18,447	5,405	41.44%
4/18/2020	30,356	11,909	64.56%
4/25/2020	19,677	-10,679	-35.18%
5/2/2020	22,789	3,112	15.82%
5/9/2020	24,108	1,319	5.79%
5/16/2020	24,900	792	3.29%
5/23/2020	24,120	-780	-3.13%
5/30/2020	23,948	-172	-0.71%
6/6/2020	25,595	1,647	6.88%
6/13/2020	25,606	11	0.04%
6/20/2020	25,617	11	0.04%
6/27/2020	25,772	155	0.61%
7/4/2020	23,693	-2,079	-8.07%
7/11/2020	24,626	933	3.94%
7/18/2020	24,933	307	1.25%
7/25/2020	25,256	323	1.30%
8/1/2020	22,994	-2,262	-8.96%
8/8/2020	22,494	-500	-2.17%
8/15/2020	21,936	-558	-2.48%
8/22/2020	18,928	-3,008	-13.71%



Source: DETR Internal Reporting

UI Claims Activity by County (Regular UC)

UI Daily Initial Claims by County for Week Ending 8/22/2020

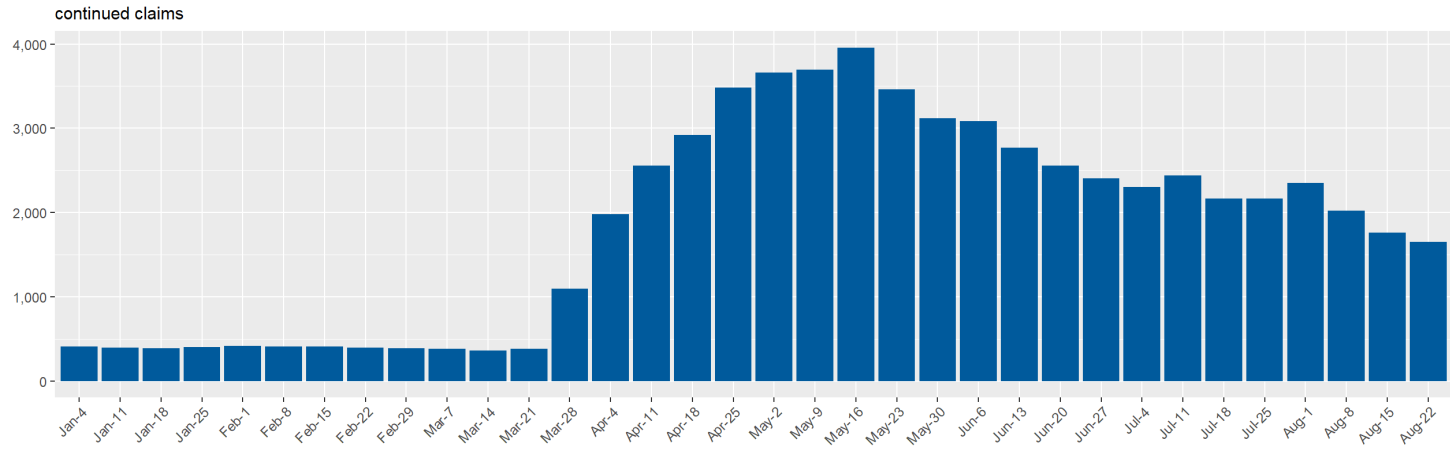
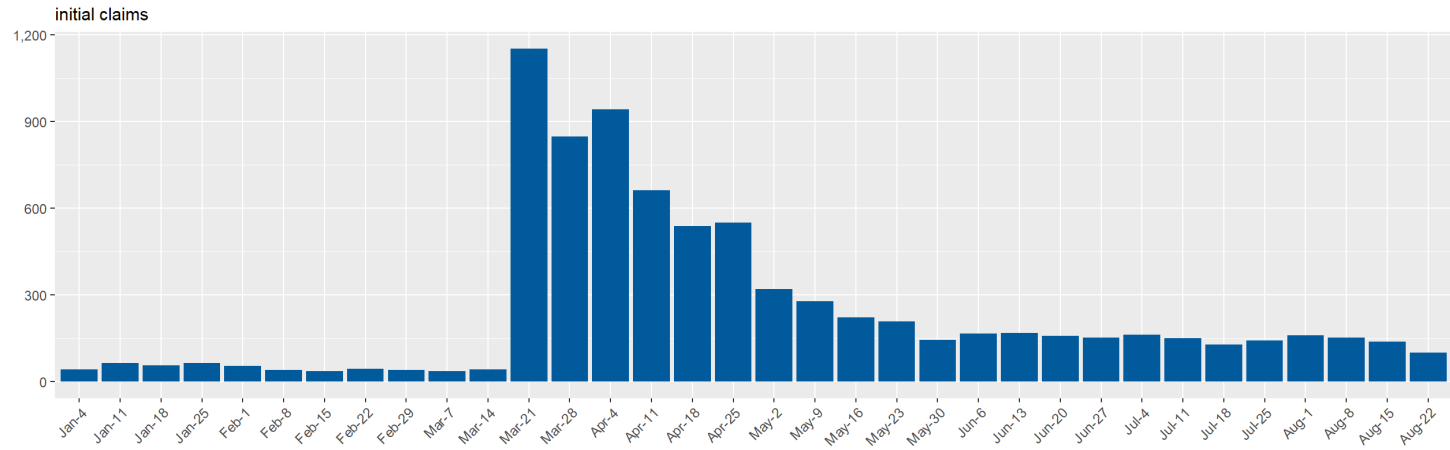
County	2020-08-16	2020-08-17	2020-08-18	2020-08-19	2020-08-20	2020-08-21	2020-08-22	Total
Carson City	16	17	11	14	22	14	0	94
Churchill	8	6	7	7	5	4	0	37
Clark	1,500	1,480	1,311	1,069	871	702	171	7,104
Douglas	10	10	11	11	9	4	2	57
Elko	5	13	12	10	11	6	0	57
Eureka	0	0	1	0	0	0	0	1
Humboldt	1	4	3	1	3	1	1	14
Lander	0	5	1	3	2	1	0	12
Lincoln	0	0	2	1	0	2	0	5
Lyon	12	19	11	10	9	9	4	74
Mineral	0	2	2	0	1	0	0	5
Nye	19	23	12	15	7	8	1	85
OOS	346	343	411	470	321	248	98	2,237
Pershing	0	1	0	0	0	0	1	2
Washoe	106	143	157	127	121	88	25	767
White Pine	3	0	0	7	0	0	0	10

UI Daily Continued Claims by County for Week Ending 8/22/2020

County	2020-08-16	2020-08-17	2020-08-18	2020-08-19	2020-08-20	2020-08-21	2020-08-22	Total
Carson City	960	372	135	65	56	46	11	1,645
Churchill	233	73	25	38	10	10	3	392
Clark	111,704	31,742	12,846	5,948	4,232	3,311	1,039	170,822
Douglas	657	262	124	89	33	17	13	1,195
Elko	520	183	89	63	62	19	6	942
Esmeralda	8	0	1	0	0	0	0	9
Eureka	13	1	0	0	1	0	0	15
Humboldt	159	58	25	13	2	3	1	261
Lander	60	19	5	11	2	0	0	97
Lincoln	28	15	7	4	0	1	0	55
Lyon	896	264	105	61	28	42	16	1,412
Mineral	49	17	7	7	5	1	0	86
Nye	934	254	107	38	37	13	8	1,391
OOS	5,649	3,093	2,105	1,856	1,014	843	436	14,996
Pershing	23	11	1	4	5	2	0	46
Storey	18	9	11	2	1	1	2	44
Washoe	9,084	3,356	1,455	686	518	412	134	15,645
White Pine	88	18	16	4	2	3	2	133

UI Claims for Carson City

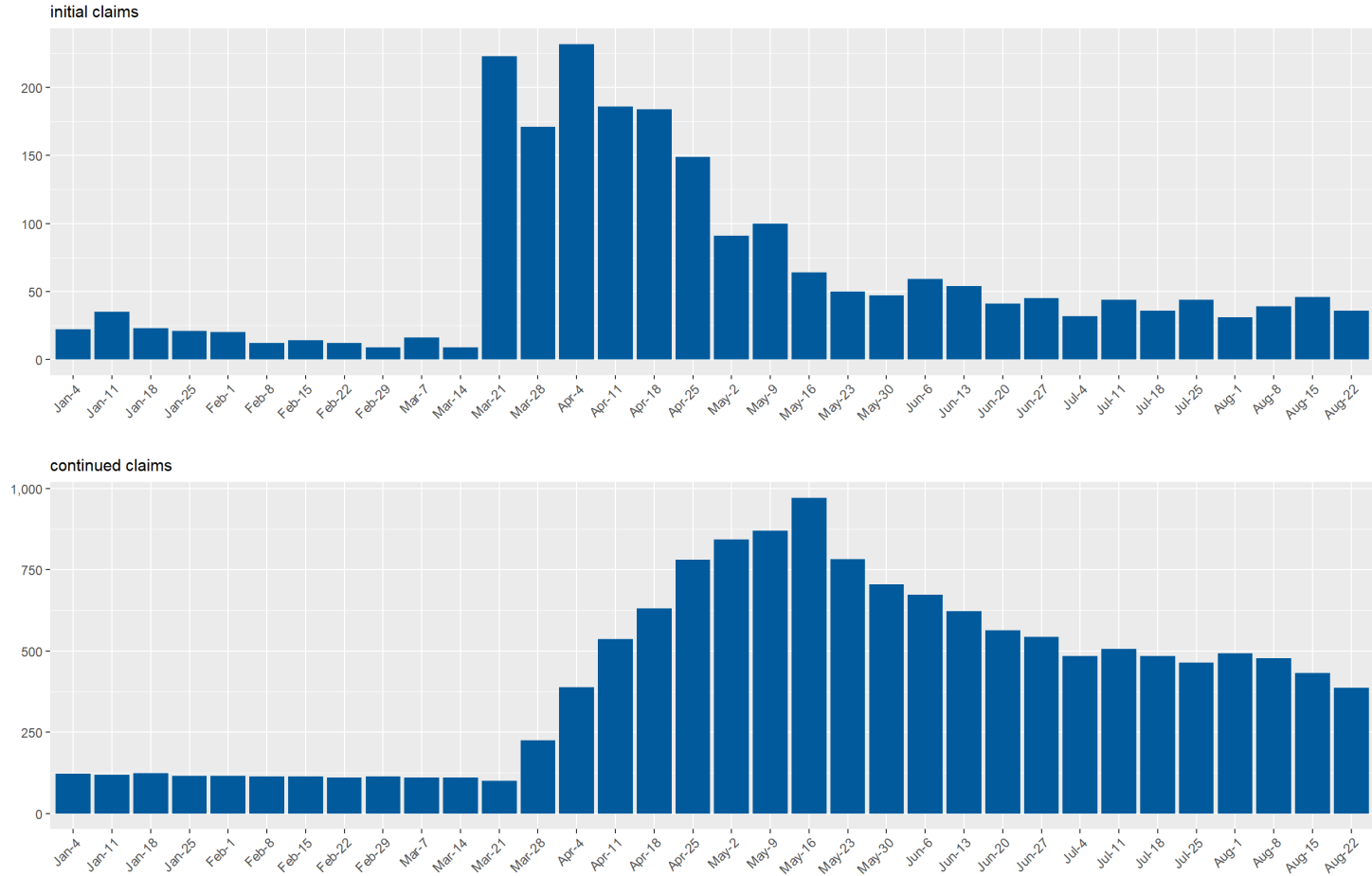
Carson City Unemployment Insurance Claims by Week since January 2020



Source: DETR Internal Reporting

UI Claims for Churchill County

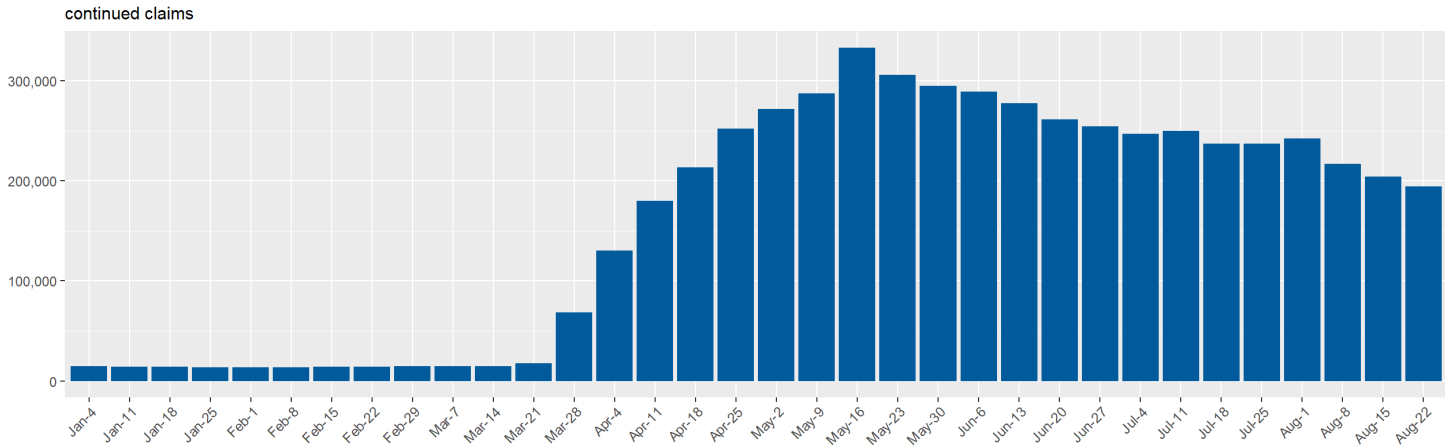
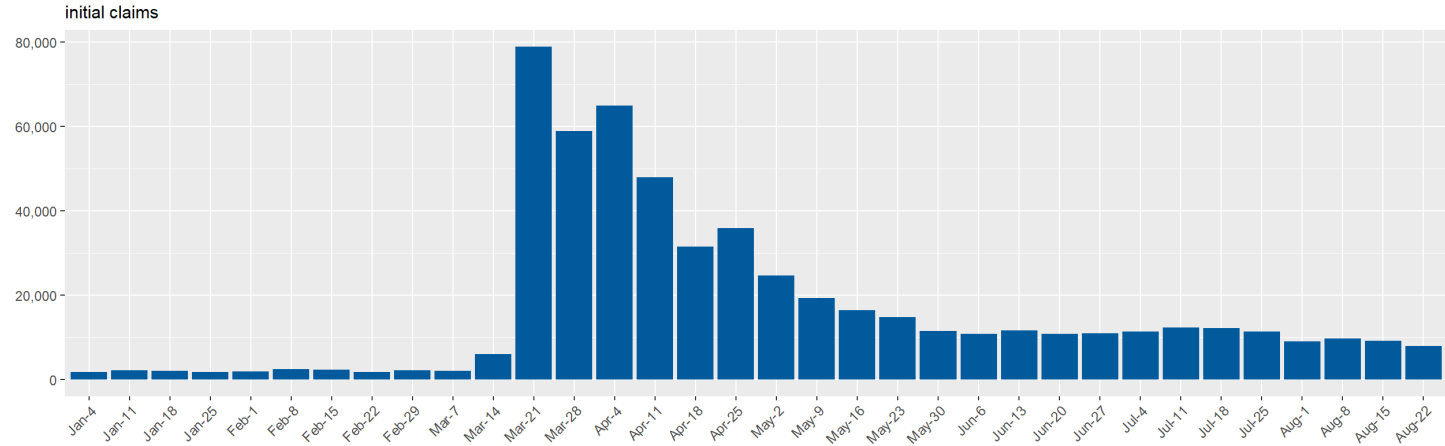
Churchill County Unemployment Insurance Claims by Week since January 2020



Source: DETR Internal Reporting

UI Claims for Clark County

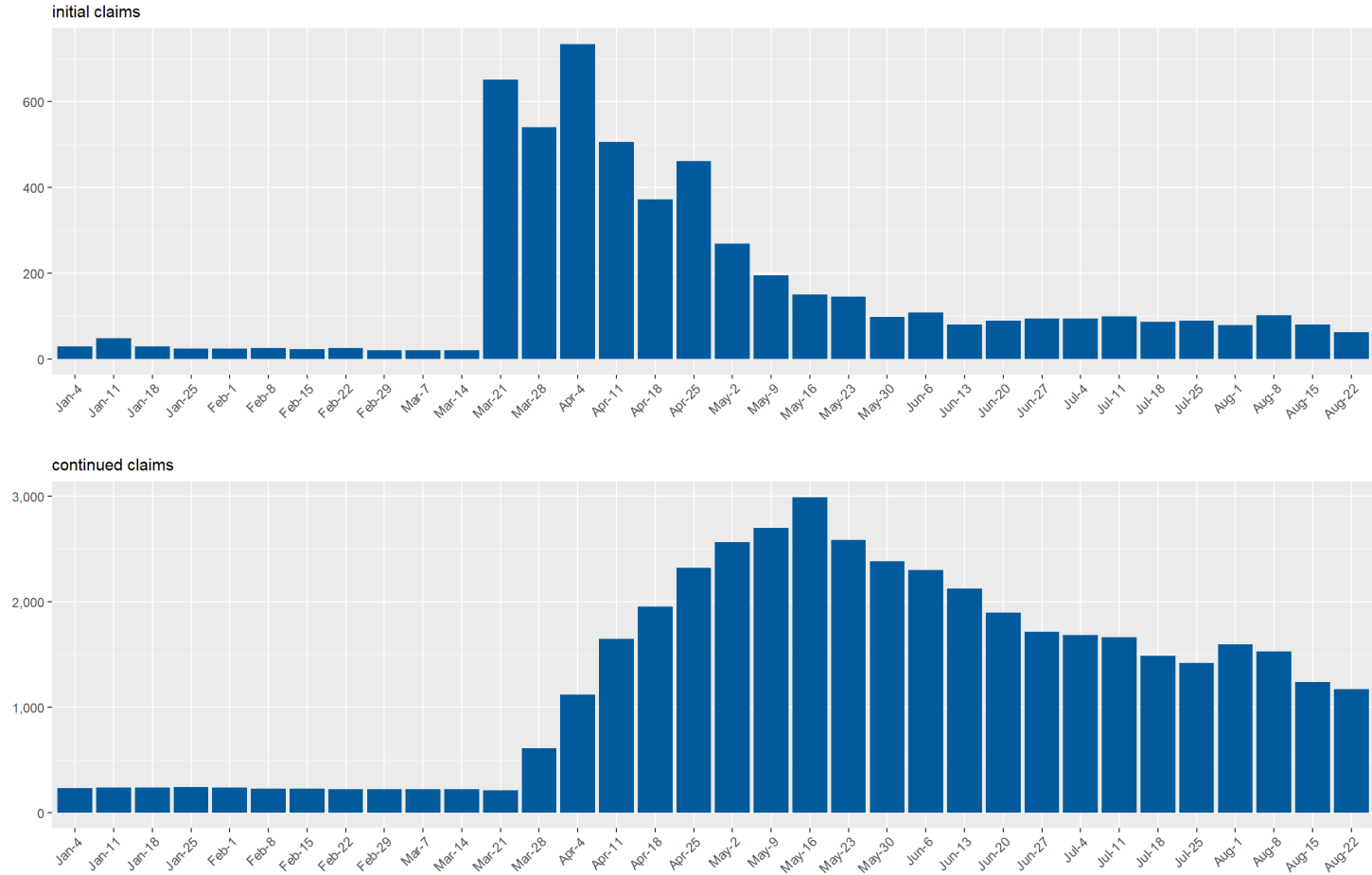
Clark County Unemployment Insurance Claims by Week since January 2020



Source: DETR Internal Reporting

UI Claims for Douglas County

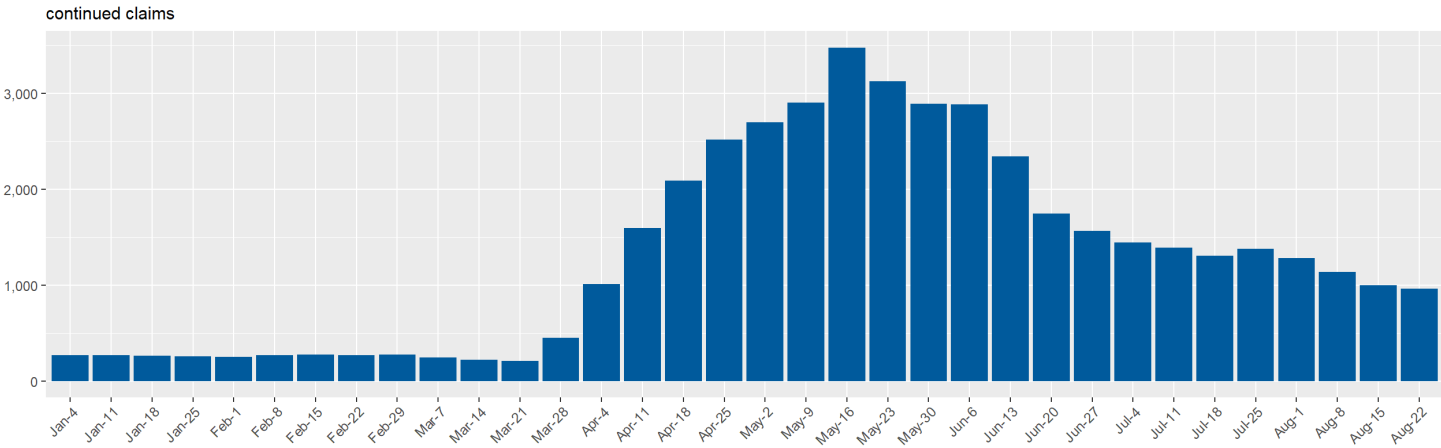
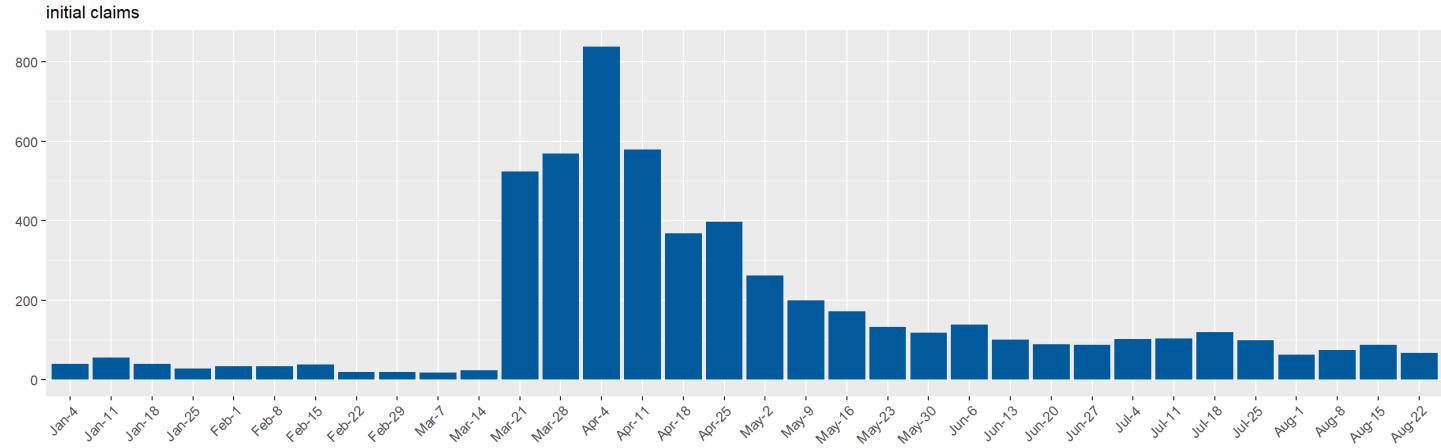
Douglas County Unemployment Insurance Claims by Week since January 2020



Source: DETR Internal Reporting

UI Claims for Elko County

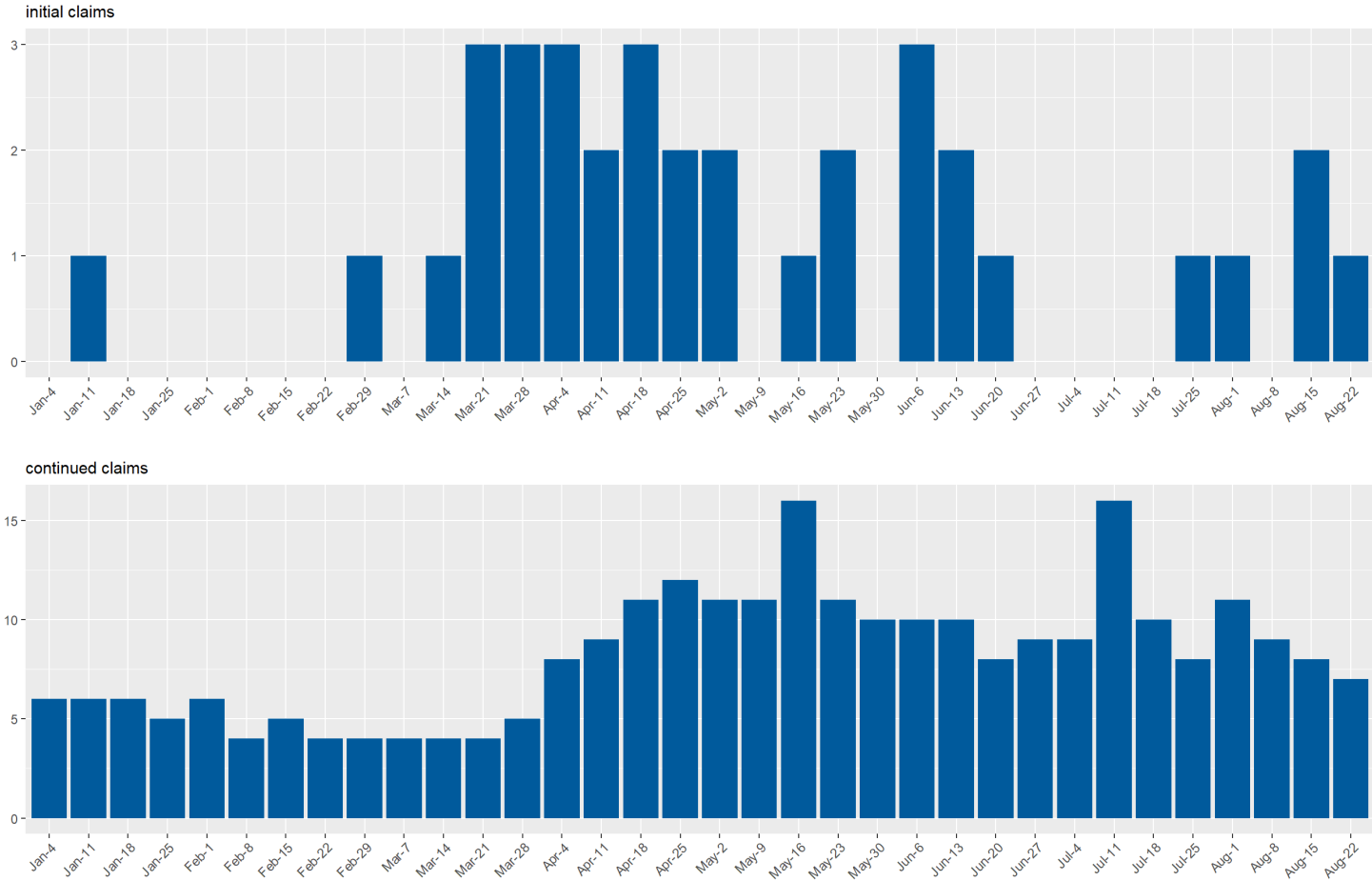
Elko County Unemployment Insurance Claims by Week since January 2020



Source: DETR Internal Reporting

UI Claims for Esmeralda County

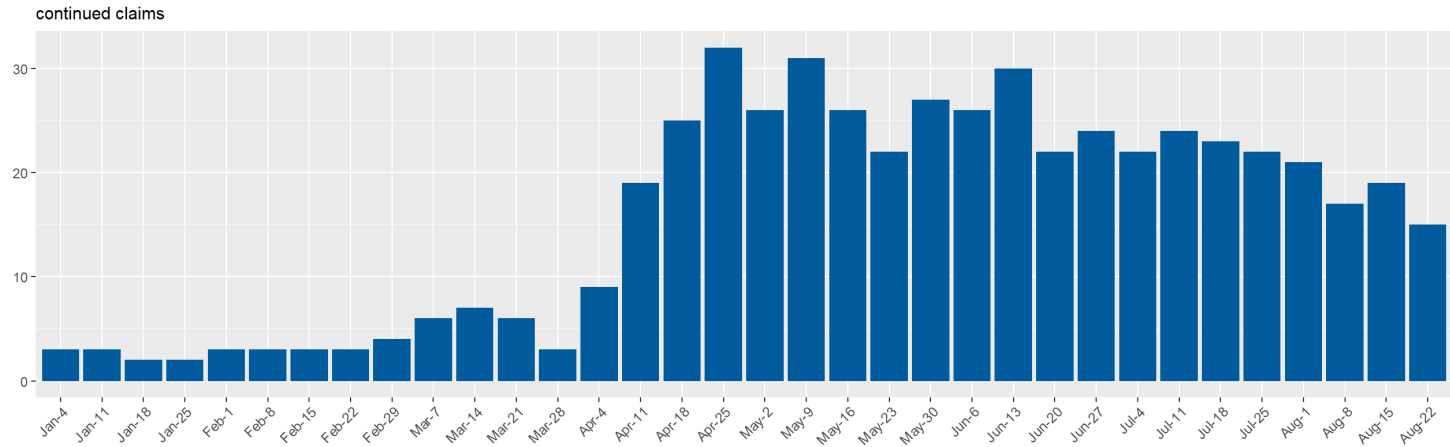
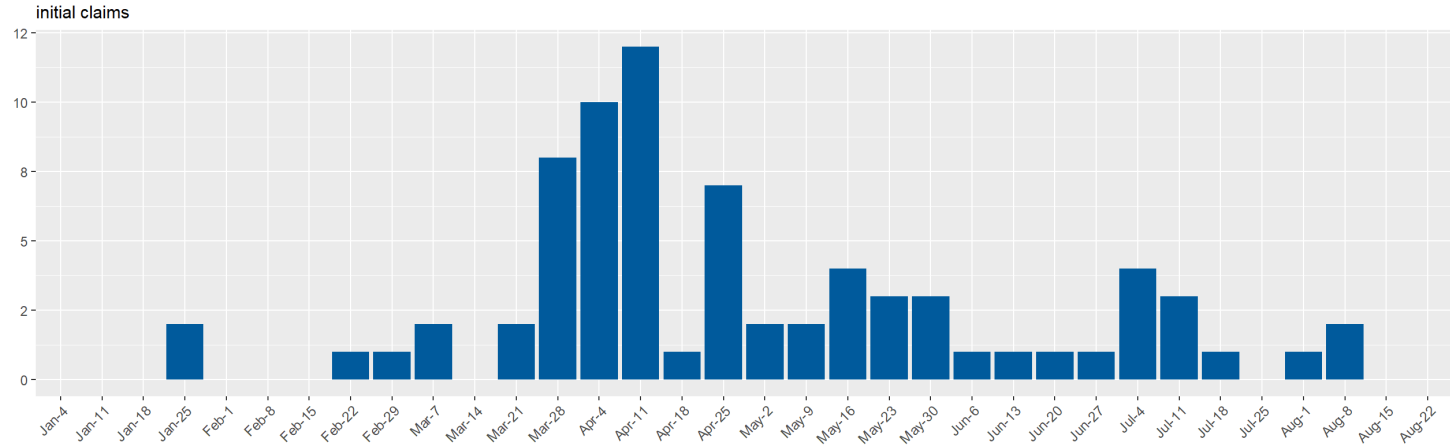
Esmeralda County Unemployment Insurance Claims by Week since January 2020



Source: DETR Internal Reporting

UI Claims for Eureka County

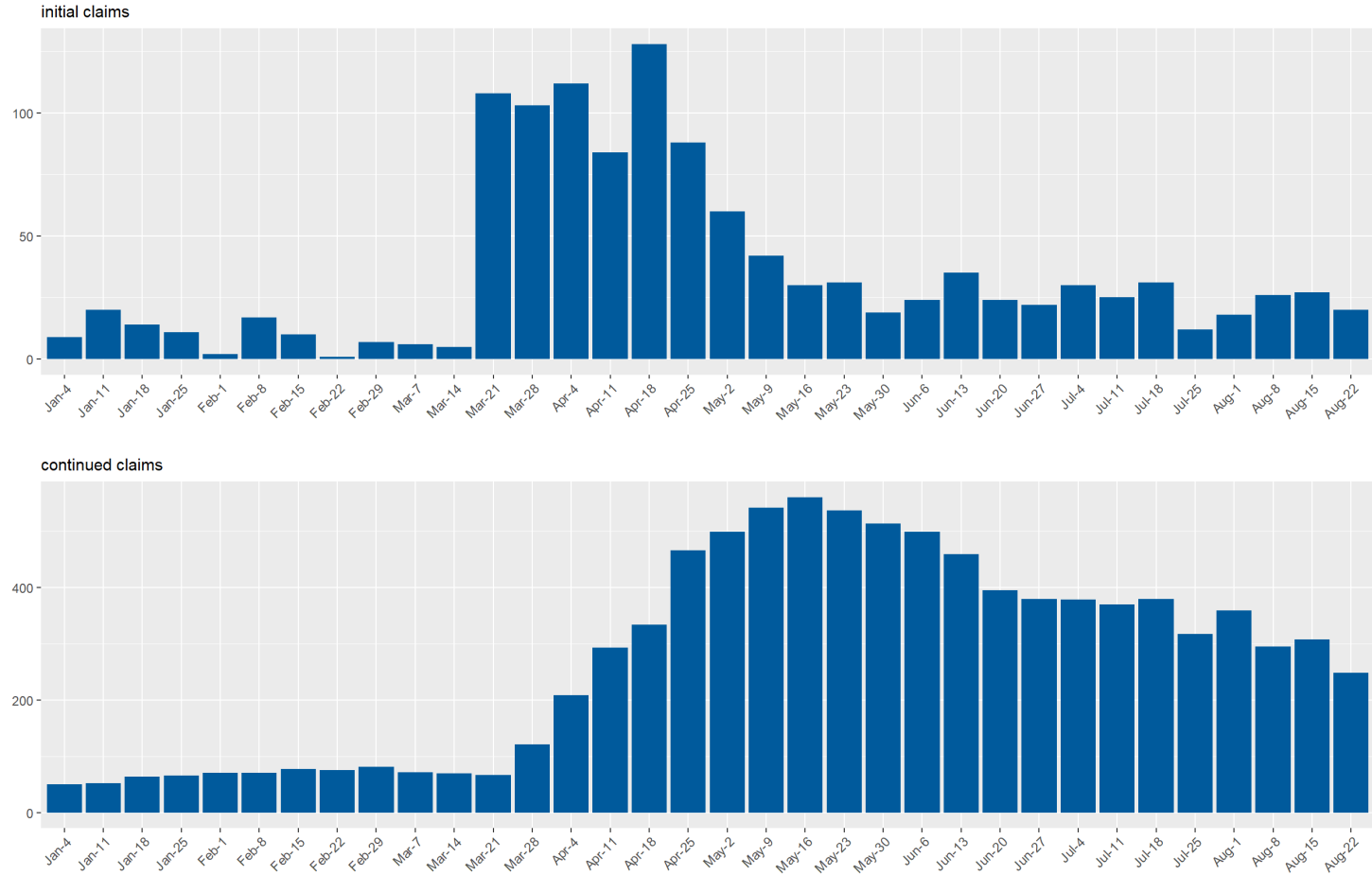
Eureka County Unemployment Insurance Claims by Week since January 2020



Source: DETR Internal Reporting

UI Claims for Humboldt County

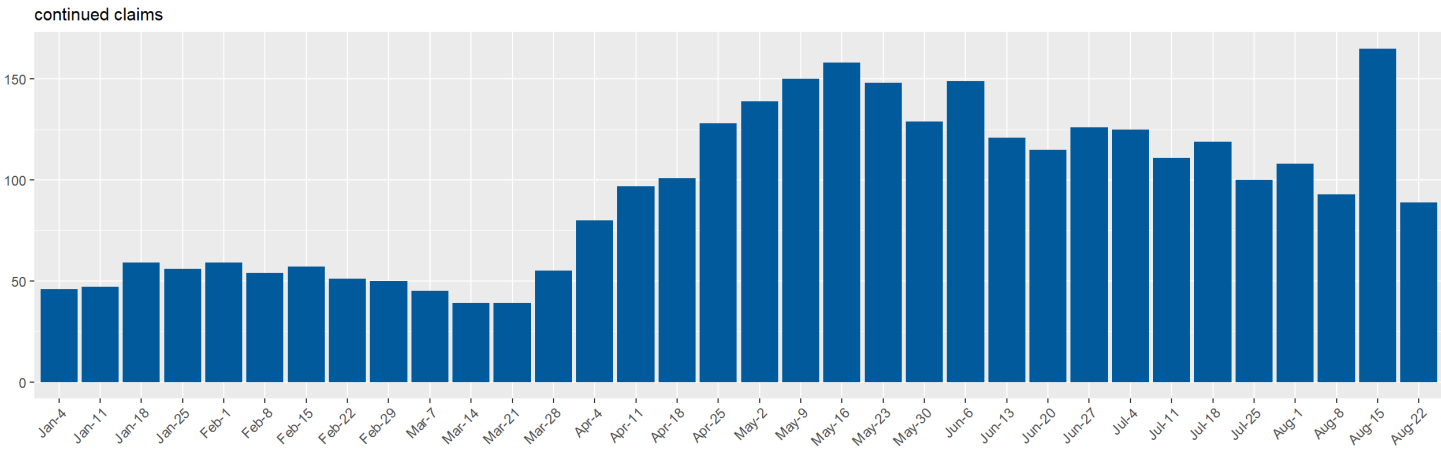
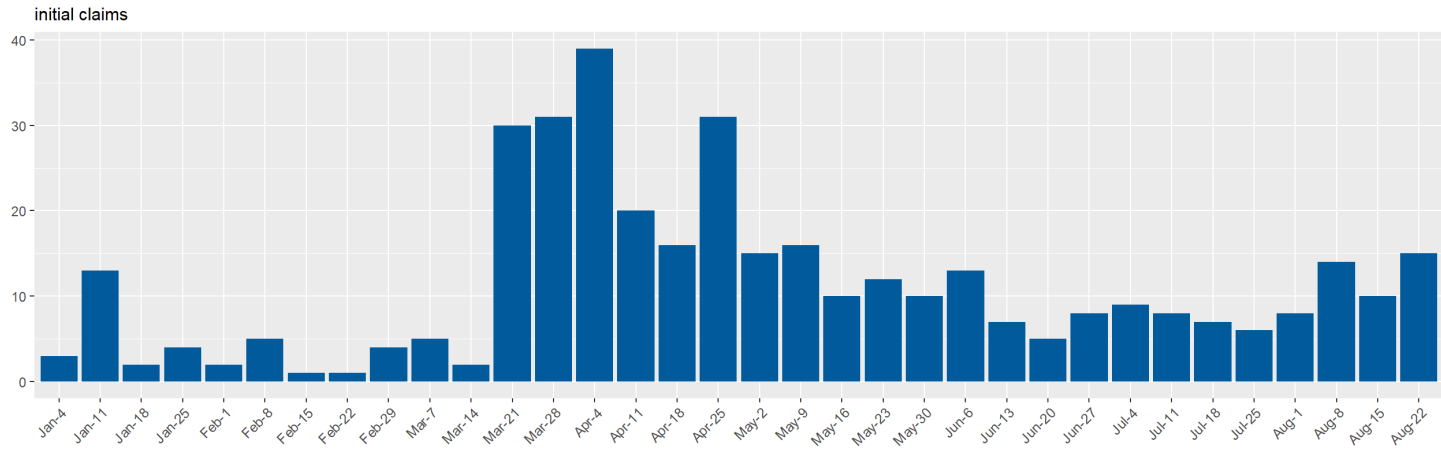
Humboldt County Unemployment Insurance Claims by Week since January 2020



Source: DETR Internal Reporting

UI Claims for Lander County

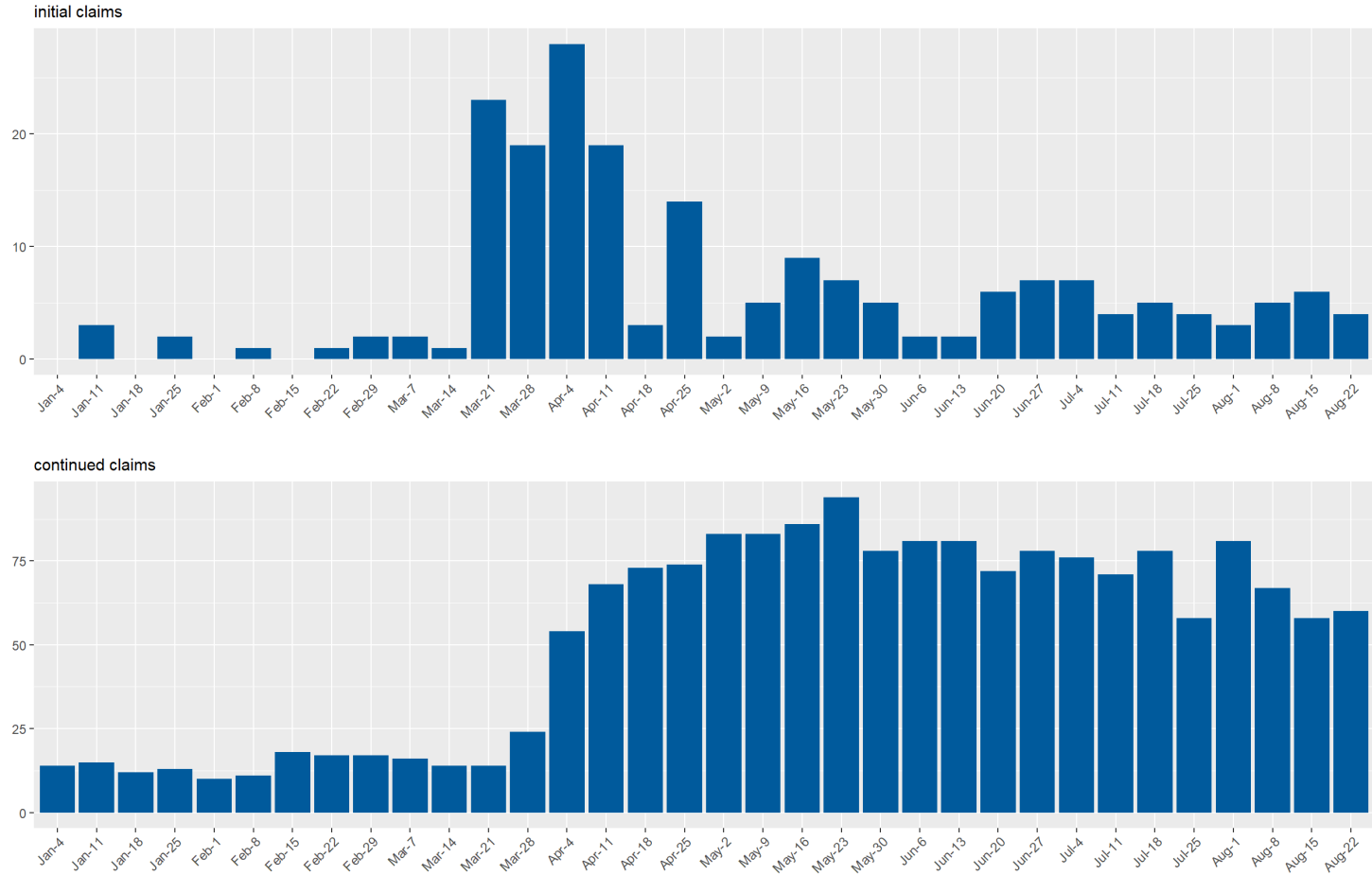
Lander County Unemployment Insurance Claims by Week since January 2020



Source: DETR Internal Reporting

UI Claims for Lincoln County

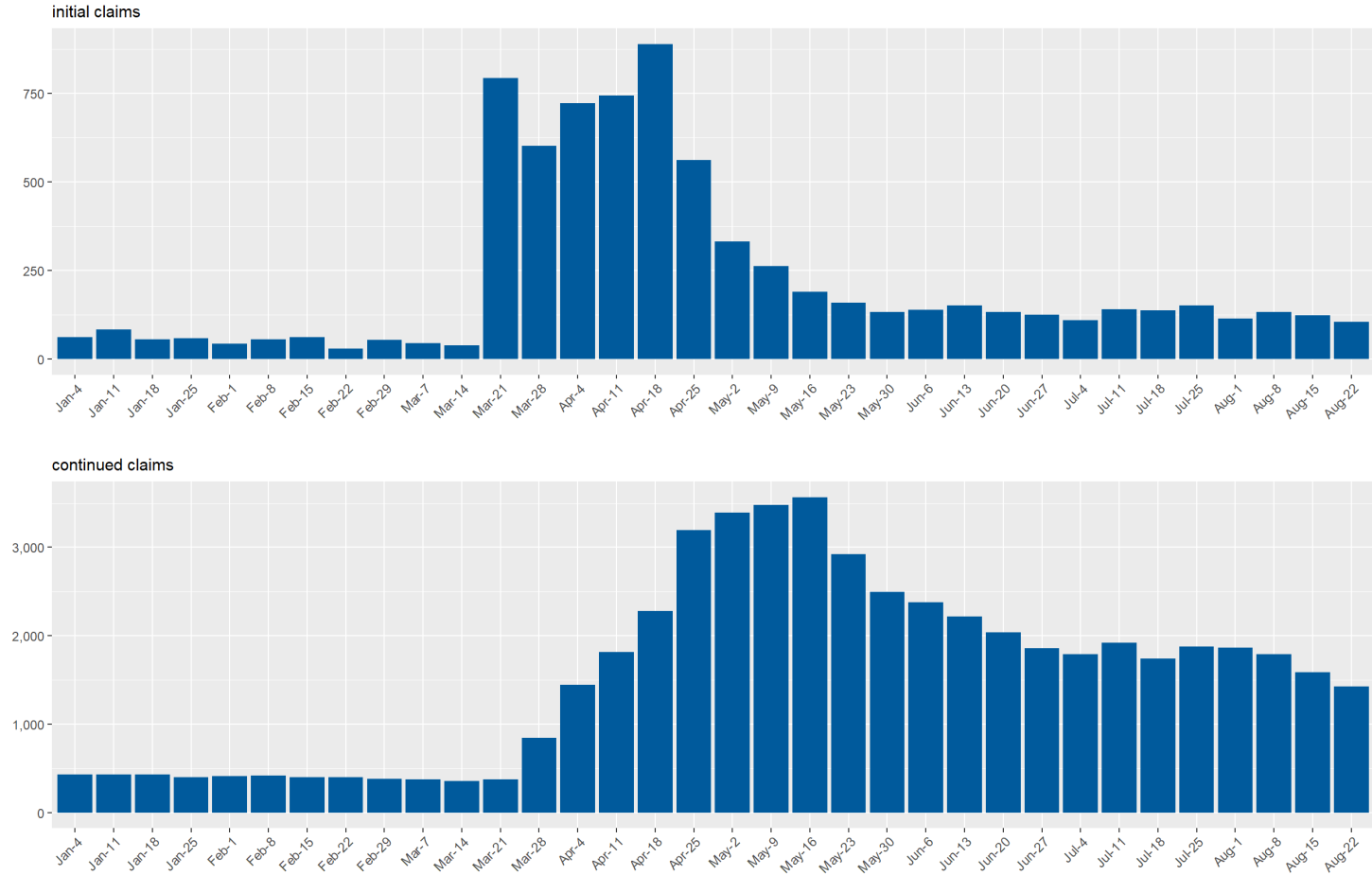
Lincoln County Unemployment Insurance Claims by Week since January 2020



Source: DETR Internal Reporting

UI Claims for Lyon County

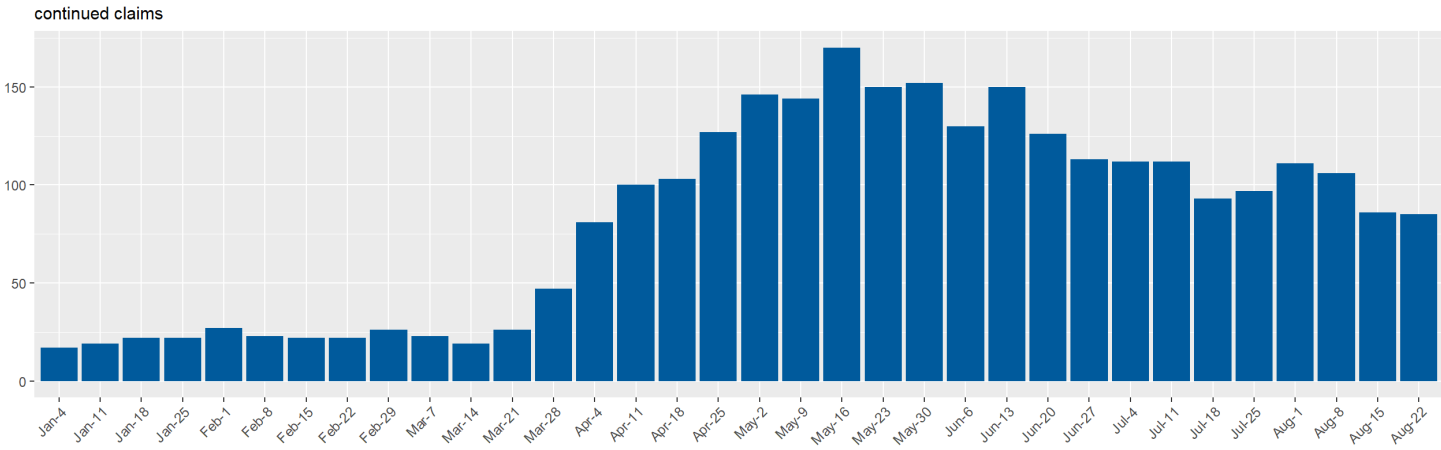
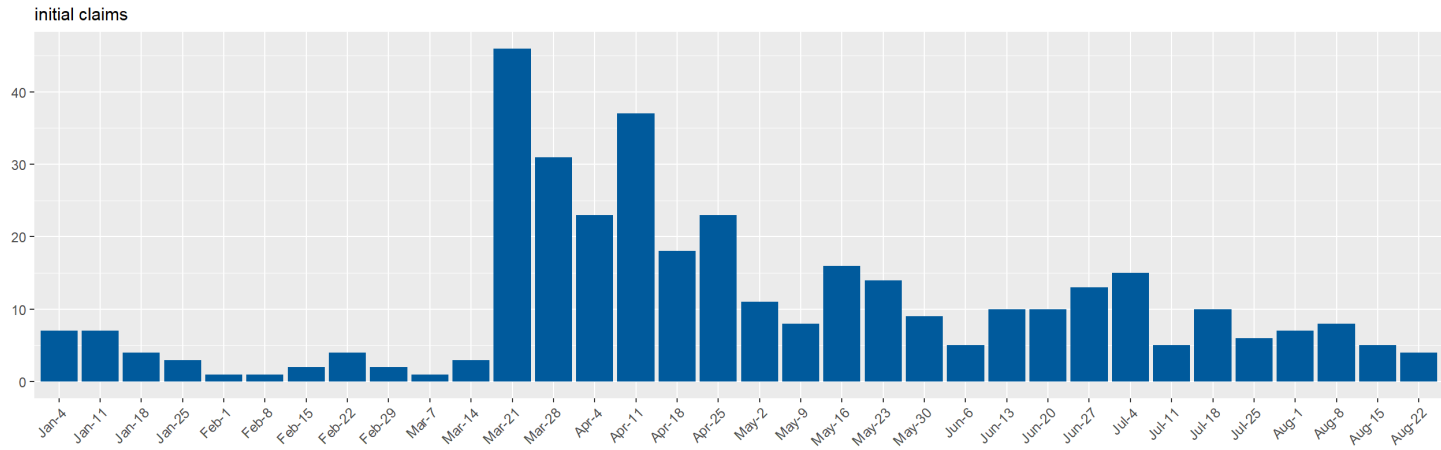
Lyon County Unemployment Insurance Claims by Week since January 2020



Source: DETR Internal Reporting

UI Claims for Mineral County

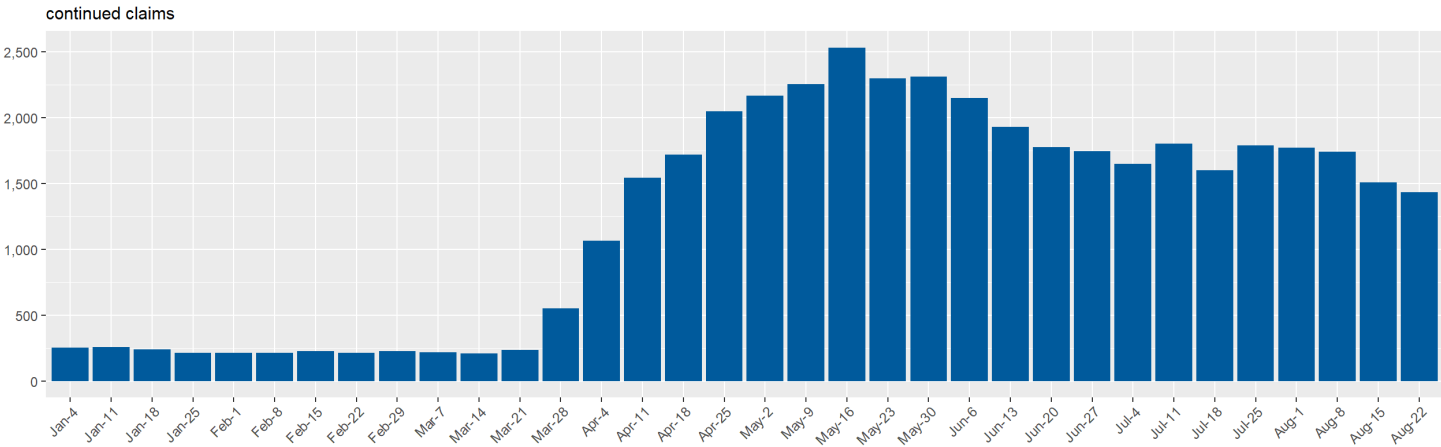
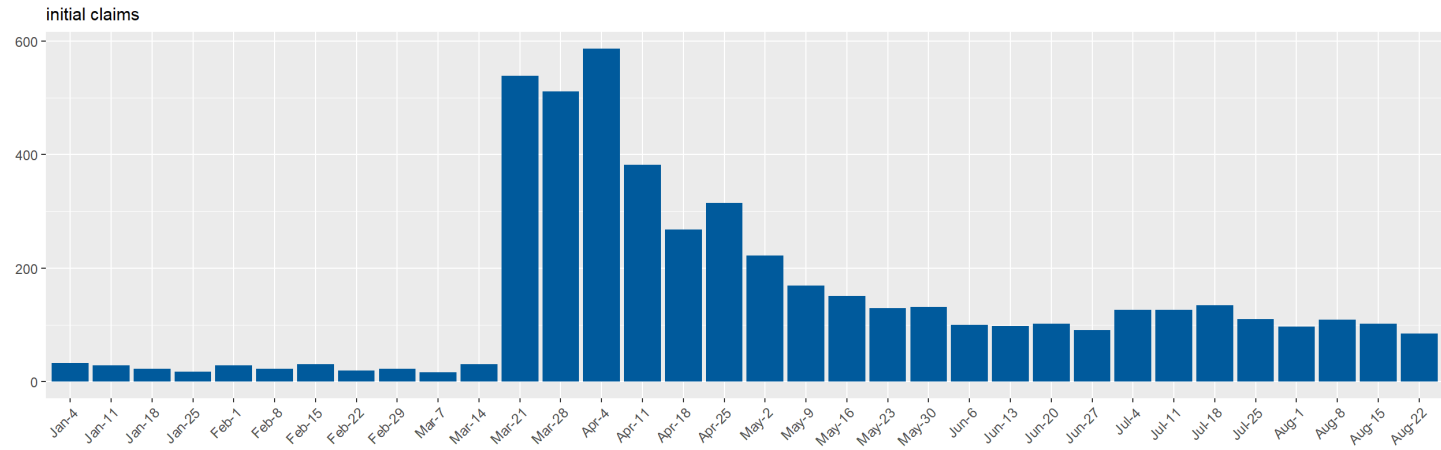
Mineral County Unemployment Insurance Claims by Week since January 2020



Source: DETR Internal Reporting

UI Claims for Nye County

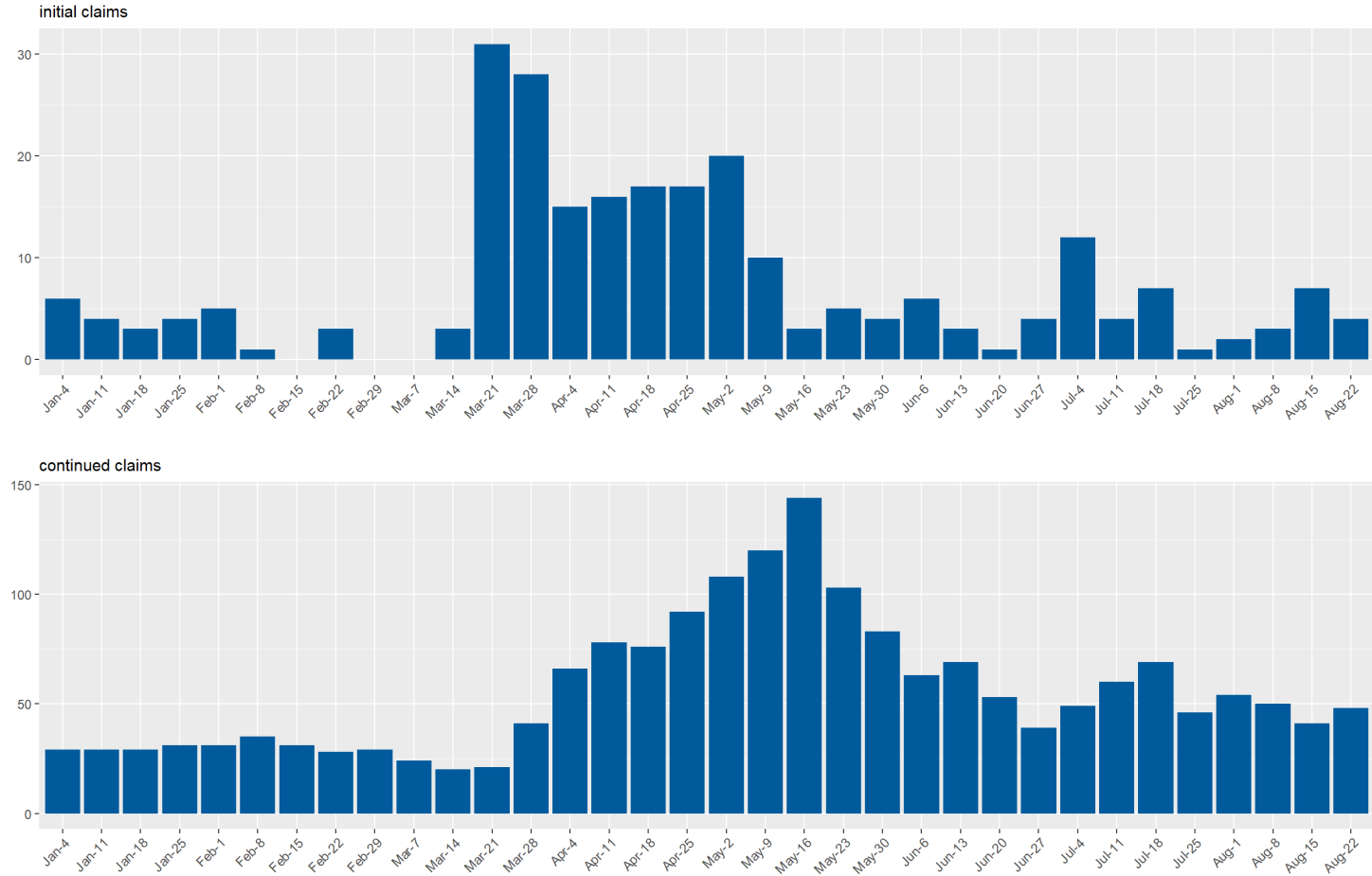
Nye County Unemployment Insurance Claims by Week since January 2020



Source: DETR Internal Reporting

UI Claims for Pershing County

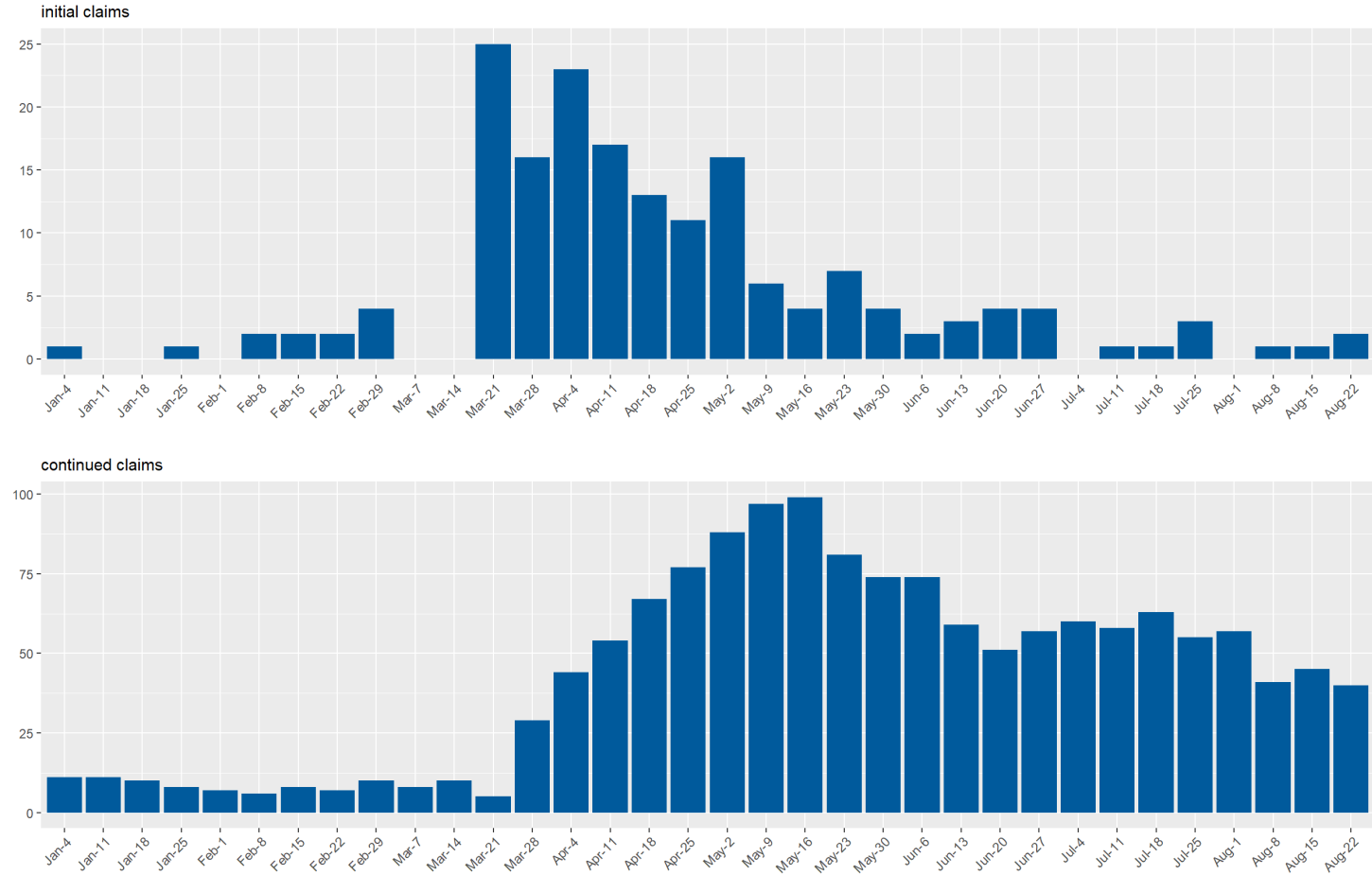
Pershing County Unemployment Insurance Claims by Week since January 2020



Source: DETR Internal Reporting

UI Claims for Storey County

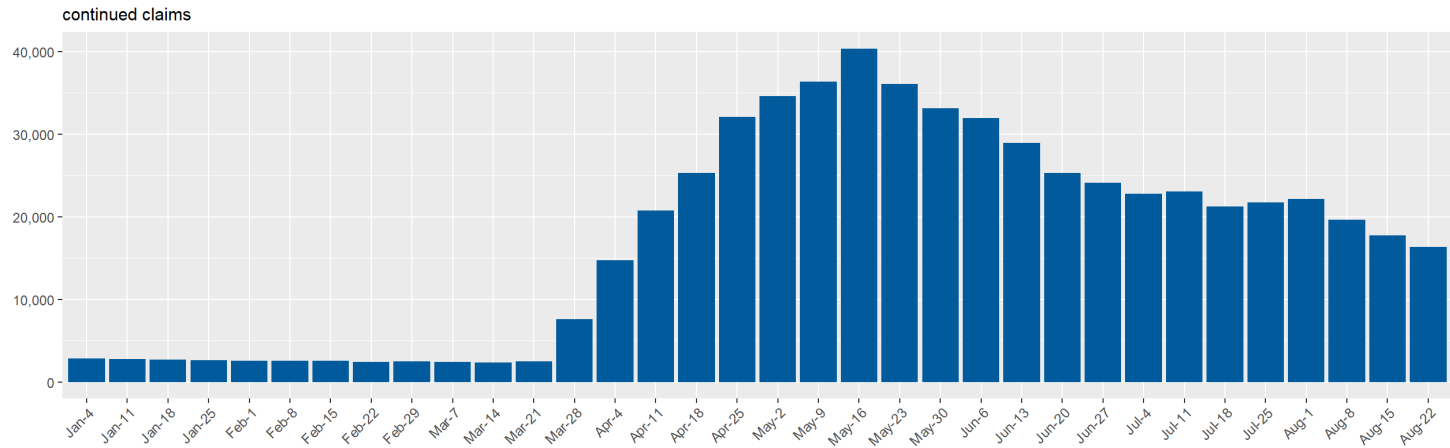
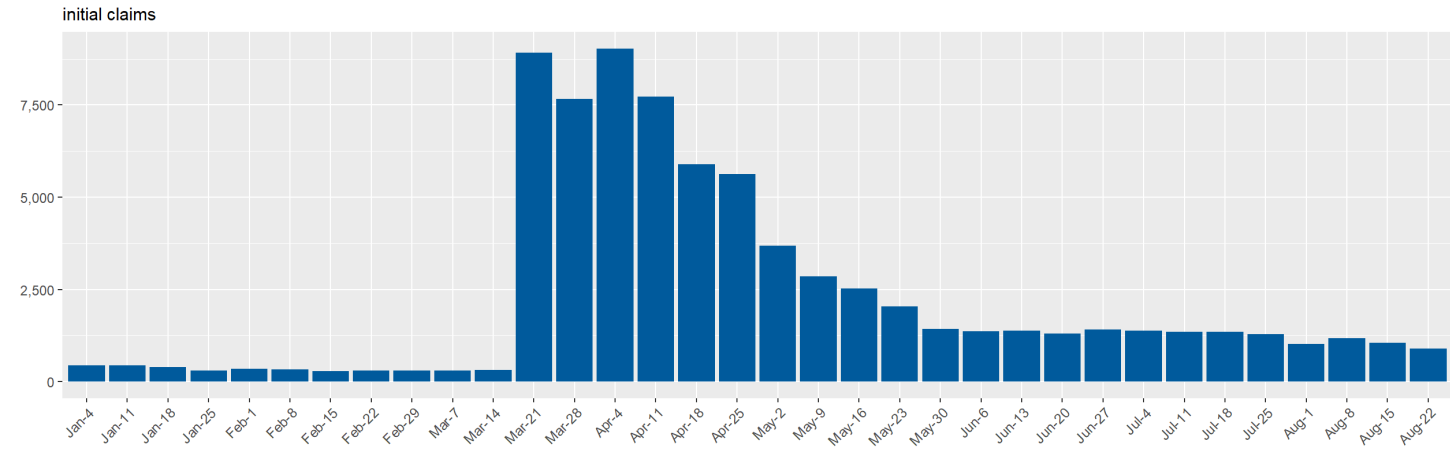
Storey County Unemployment Insurance Claims by Week since January 2020



Source: DETR Internal Reporting

UI Claims for Washoe County

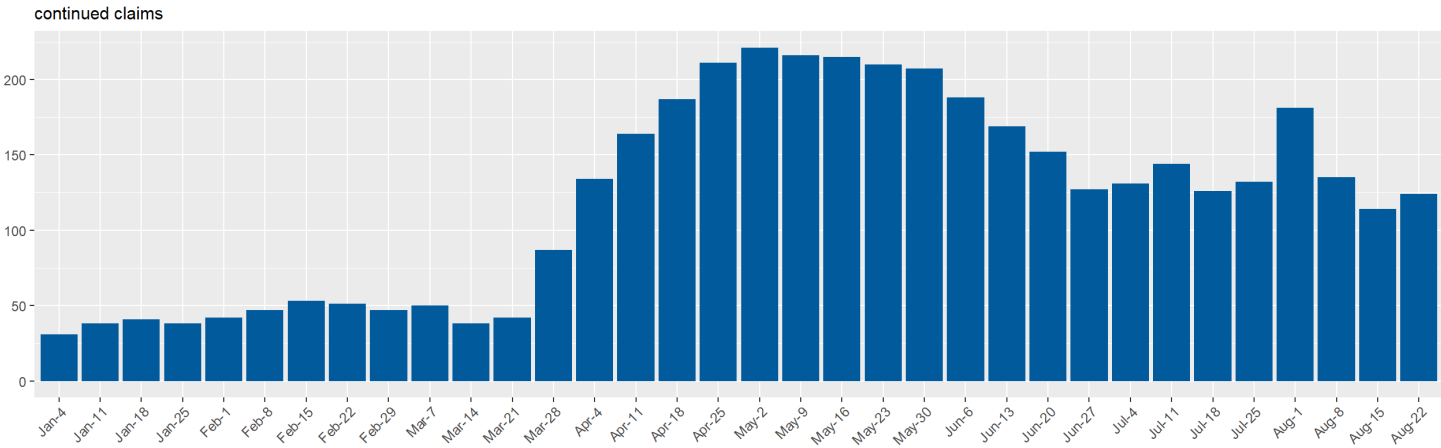
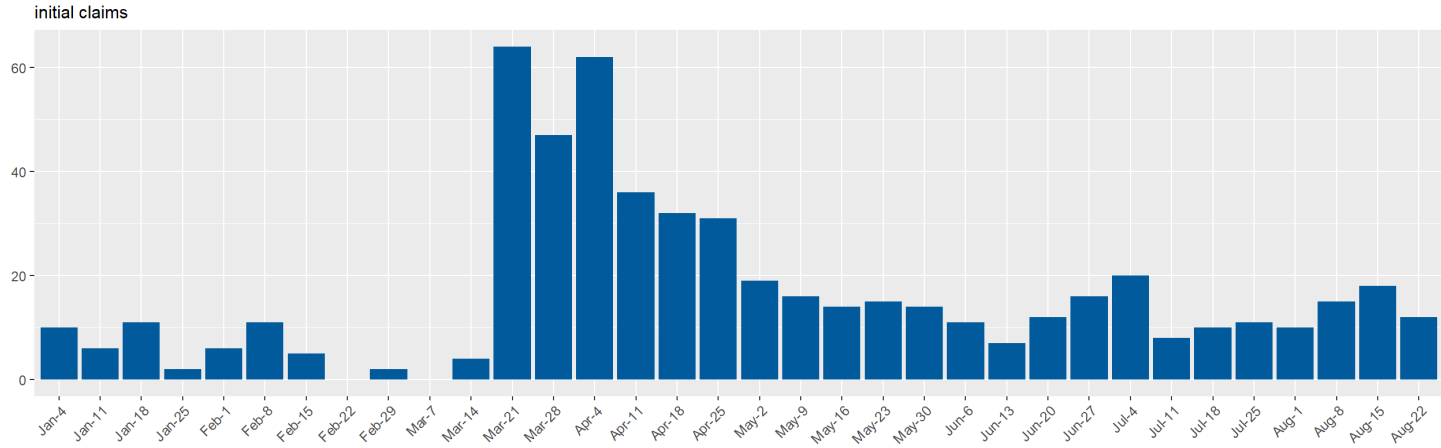
Washoe County Unemployment Insurance Claims by Week since January 2020



Source: DETR Internal Reporting

UI Claims for White Pine County

White Pine County Unemployment Insurance Claims by Week since January 2020



Source: DETR Internal Reporting

Data Dashboard Page

In effort to limit the overall length of this report, an interactive report was created that includes weekly data for all programs. This data is available for download on the "Data" tab of the Weekly Claims Characteristics by Program report below.

Weekly Reports

Weekly Claims Dashboard

The claims data contained on the ETA 539 report are used in current economic analysis of unemployment trends in Nevada.

Weekly Claims Characteristics by Program

This report provides weekly information about the characteristics of claimants in Nevada for all programs.

Weekly Claims by County

The claims data contained in this dashboard provide unemployment insurance trends by county in the State of Nevada. This dashboard allows for exploration of these trends.

Monthly Reports

Monthly Claims Dashboard

The ETA 5159 report contains monthly information on claims activities and on the number and amount of payments under state unemployment insurance laws. The data on this report provides the basis for many common UI measures such as average duration, exhaustion rates, weeks compensated, and benefits paid. This dashboard allows for exploration of these measures and trends in the State of Nevada.

Monthly Claims Demographics

The ETA 203 report provides information about the characteristics of Unemployment Insurance (UI) claimants in Nevada. This data is useful in describing the population of claimants and determining how that population changes over time and under various conditions. It can also be compared with characteristic figures of the total unemployed as published by the Bureau of Labor Statistics (BLS).

Glossary of Terms

Initial Claim: Any notice of unemployment filed to request a determination of eligibility for unemployment insurance benefits, or to begin a subsequent period of eligibility within a period of eligibility. Initial claims measure emerging unemployment in the state.

Additional Claim: An initial Claim which reopens a previously existing claim, where the claimant stopped filing due to intervening employment.

Reopened Claim: A reopened claim is filed if you have previously filed a claim but never submitted any weekly claims.

Continued Claim: After an initial claim determines a claimant is eligible for unemployment insurance benefits, the claimant's weekly benefit claims are counted under continued claims. Continued claims in aggregate represents the insured unemployed receiving benefits in the state, and is used for economic purposes.

Credits

Special thanks to all the R and RStudio developers that built the packages to make this possible!

Packages used in this report: xaringan, xaringantheme, tidyverse, rmarkdown, viridis, scales, data.table, RcppRoll, kableExtra, knitr, patchwork, ggforce, ggthemes

Prepared by:
Department of Employment, Training & Rehabilitation
Research & Analysis Bureau