

MEDIA CONTACT
Rosa Mendez
rcmendez@detr.nv.gov

PRESS RELEASE



STEVE SISOLAK
Governor

ELISA CAFFERATA
Director

DAVID SCHMIDT
Chief Economist

SUB-STATE PRESS RELEASE

For Immediate Release
September 22, 2020

Unemployment rates vary across Nevada, highest rate in Las Vegas, lowest in Eureka county

CARSON CITY, NV - According to the Department of Employment, Training and Rehabilitation's (DETR) August 2020 economic report, Nevada added 6,500 jobs since July 2020, extending the recovery to a fourth month, although the state is still down 133,600 (9.4%) jobs since August 2019. Nevada's seasonally adjusted unemployment rate was 13.2 percent in August and is now below the 13.7 percent high experienced in the 2007 recession. Area total estimates are seasonally adjusted to account for regularly seen economic trends, but estimates discussing sector employment and sub-state unemployment rates are not adjusted for seasonality.

The Las Vegas Metropolitan Statistical Area (MSA) increased by 5,900 jobs (0.7%) since July with the trade, transportation, and utilities sector growing the most by 5,300 jobs (3.3%). Total employment saw a decrease of 127,400 jobs (-12.3%) with leisure and hospitality sector down the most by 72,600 jobs (-24.7%), compared to August 2019.

The Reno MSA had an increase of 1,900 jobs (0.8%) since July with the government sector growing the most by 900 jobs (3.3%). Compared to August 2019, total employment saw a decrease of 13,500 jobs (-5.5%) with leisure and hospitality sector down the most by 5,700 jobs (-14.1%).

The Carson City MSA experienced an increase of 300 jobs (1.0%) since July with the trade, transportation, and utilities sector growing the most by 200 jobs (5.4%). Compared to August 2019, total employment saw a decrease of 1,400 jobs (-4.5%) with professional and business services sector down the most by 400 jobs (-17.4%).

The Las Vegas MSA had an unemployment rate of 15.5 percent in August resulting from having a labor force of 1,102,926 and 170,575 unemployed individuals. In the Reno MSA, the unemployment rate was 7.2 percent in August resulting from having a labor force of 246,005 and 17,779 unemployed individuals. The Carson MSA has an unemployment rate of 7.3 percent in August resulting from having a labor force of 25,434 and 1,856 unemployed individuals.

"Last week's statewide release showed that Nevada added jobs for the fourth straight month in August with the unemployment rate falling to 13.2 percent. Today's report shows detailed data for our state's local areas. In particular, the impact of COVID-19 on Las Vegas and Clark County is clear, with this area

500 E. Third Street, Room 200 | Carson City, Nevada 89713 | 2800 E. St. Louis Ave. | Las Vegas, NV 89104
Phone: (775) 684-3911 | (702) 486-7923 | <https://detr.nv.gov> | Fax: (775) 684-6426 | Fax: (702) 486-7924

experiencing the slowest rebound in jobs and the state's highest unemployment rate. Meanwhile, robust growth in the mining industry has driven unemployment in the Elko area back below five percent. These significant differences between the local areas of the state highlight the ongoing importance of using regional information to examine the impacts of COVID-19 on Nevada's labor market" said David Schmidt, Chief Economist for DETR.

Additional Economic Report Highlights:

Employment (Seasonally Adjusted):

- Las Vegas employment changed 5,900 jobs since July and -127,400 jobs since August 2019 a rate of -12.3%.
- Reno employment changed 1,900 jobs since July and -13,500 jobs since August 2019 a rate of -5.5%.
- Carson City employment changed 300 jobs since July and -1,400 jobs since August 2019 a rate of -4.5%.

Unemployment (Not Seasonally Adjusted):

- Las Vegas MSA's unemployment was 15.5% in August compared to July's rate of 16.6% and 4.1% in August 2019.
- Reno MSA's unemployment was 7.2% in August compared to July's rate of 8.2% and 3.1% in August 2019.
- Carson City MSA's unemployment was 7.3% in August compared to July's rate of 8.1% and 3.6% in August 2019.
- The unemployment rate in the Elko Micropolitan area was 4.7% in August compared to July's rate of 5% and 2.8% in August 2019.
- The Fallon area's unemployment was 5.3% in August compared to July's rate of 5.8% and 3.5% in August 2019.
- The unemployment rate in Lyon County was 8% in August compared to July's rate of 8.4% and 4.5% in August 2019.
- Douglas County's unemployment rate was 7.3% in August compared to July's rate of 8.1% and 3.6% in August 2019.
- The unemployment rate in Nye County was 9.6% in August compared to July's rate of 9.9% and 5% in August 2019.
- The unemployment rate in the Winnemucca area was 4.8% in August compared to July's rate of 5.1% and 3.1% in August 2019.

—###—

ABOUT THE RESEARCH AND ANALYSIS BUREAU:

The Research and Analysis Bureau is Nevada's premier source for labor market information. A part of DETR, the Bureau is responsible for creating, analyzing, and reporting Nevada's labor market information, in cooperation with the United States Bureau of Labor Statistics (BLS).

Visit us <http://www.nevadaworkforce.com> and Follow us on Twitter: <http://www.twitter.com/NVlabormarket>

DAVID SCHMIDT
Chief Economist



STEVE SISOLAK
Governor

Elisa Cafferata
Director

Nevada Sub-State Labor Market Overview

August 2020

Published on September 22, 2020

In this release, DETR provides updates on Nevada's primary employment, unemployment, and unemployment insurance programs. August was the fourth month in a row that the Nevada economy regained jobs, though at a slower pace than in previous months. In the Las Vegas and Carson City Metropolitan Statistical Areas (MSAs) the trade, transportation, and utilities sector added back the most jobs since July, while the government sector added the most jobs in the Reno MSA. The hardest hit sector remains leisure and hospitality causing some of the difference in the pace of recovery between the Las Vegas area and the Reno area.

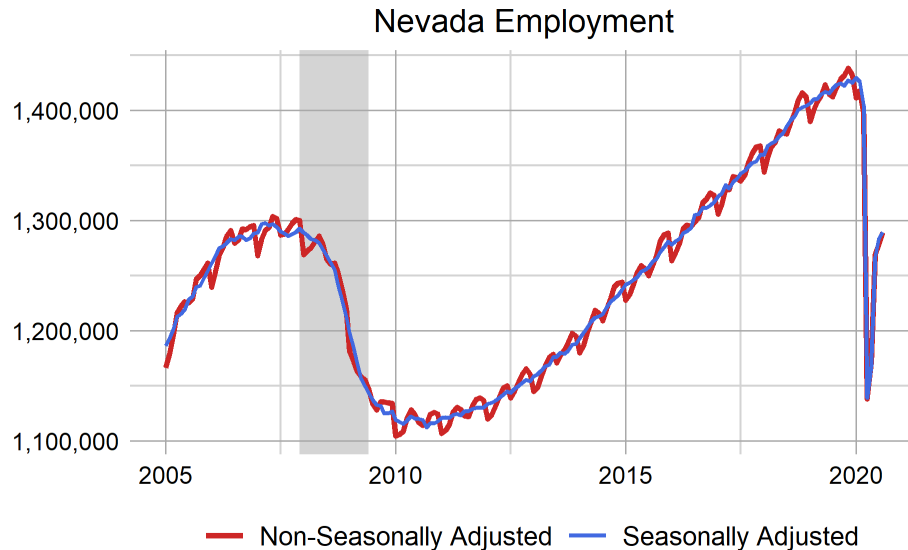
Unemployment on a state level has fallen to rates that are below the previous recession's high of 13.7 percent. Many counties and regions of the state area also below previous highs except for the Las Vegas MSA. This can be attributed to the area's concentration of leisure and hospitality jobs and the extreme impact that the shutdowns have had on that sector. The lowest unemployment rate in the state is in Eureka County.

Nevada Economic Summary

	Annual Employment Change		Unemployment Rates	
	Unadjusted	Adjusted	Unadjusted	Adjusted
U.S.	-7.2%	-6.9%	8.5	8.4
Nevada	-9.3%	-9.4%	13.3	13.2
Carson City MSA	-4.5%	-4.5%	7.3	**
Las Vegas - Paradise MSA	-12.2%	-12.3%	15.5	**
Reno - Sparks MSA	-5.9%	-5.5%	7.2	**

Current Employment Statistics ([CES](#))

Estimates for this section come from the Current Employment Statistics (CES) program sponsored by the Bureau of Labor statistics ([BLS-CES](#)).



[United States Economic Summary](#) | [Nevada Economic Summary](#)

Las Vegas MSA seasonally adjusted total nonfarm employment saw an increase of 5,900 jobs (0.7%) from July to August. Compared to August 2019, total nonfarm employment lost 127,400 jobs (-12.3%). The three sectors with the largest employment growth are mining and logging (20.0%), financial activities (1.3%), and government (0.2%). Sector estimates are not adjusted for seasonality.

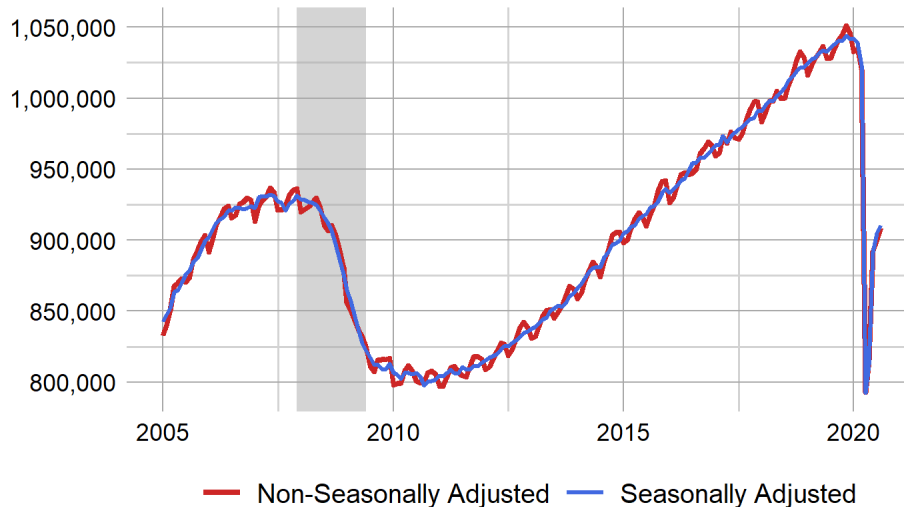
Reno MSA seasonally adjusted total nonfarm employment experienced an increase of 1,900 jobs (0.8%) from July to August. Compared to August 2019, total nonfarm employment decreased -13,500 jobs (-5.5%). The three sectors with the largest employment growth are government (1.5%), manufacturing (0.8%), and mining and logging (0.0%). Sector estimates are not adjusted for seasonality.

Carson City MSA seasonally adjusted total nonfarm employment realized an increase of 300 jobs (1.0%) from July to August. Compared to August 2019 total nonfarm employment saw a decrease of -1,400 jobs (-4.5%). The three sectors with the largest employment growth are leisure and hospitality (13.2%), government (1.1%), and manufacturing (0.0%). Sector estimates are not adjusted for seasonality.

Non-Seasonally Adjusted Current Employment Statistics				
Area	August 2020	Monthly Change	Yearly Change	Annual Growth Rate
U.S.	140,598,000	1,535,000	-10,958,000	-7.23%
Nevada	1,289,000	10,900	-132,100	-9.30%
Carson City MSA	29,600	200	-1,400	-4.52%
Las Vegas - Paradise MSA	908,500	8,600	-126,300	-12.21%
Reno - Sparks MSA	233,000	2,700	-14,500	-5.86%

Seasonally Adjusted Current Employment Statistics				
Area	August 2020	Monthly Change	Yearly Change	Annual Growth Rate
U.S.	140,914,000	1,371,000	-10,454,000	-6.91%
Nevada	1,289,800	6,500	-133,600	-9.39%
Carson City MSA	29,500	300	-1,400	-4.53%
Las Vegas - Paradise MSA	910,600	5,900	-127,400	-12.27%
Reno - Sparks MSA	233,500	1,900	-13,500	-5.47%

Las Vegas Employment



Las Vegas Employment

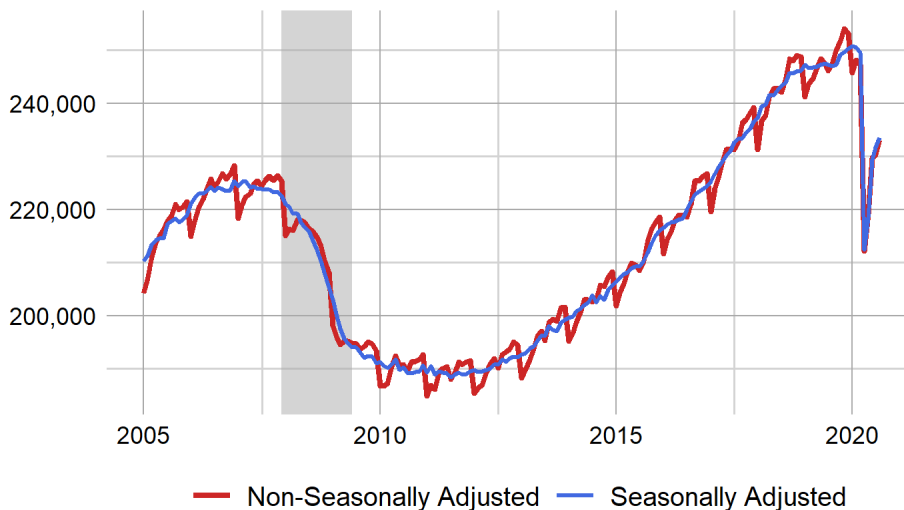
	Unadjusted	Adjusted
Current	908,500	910,600
Monthly Change	8,600	5,900
Annual Change	-126,300	-127,400
Annual Growth Rate	-12.2%	-12.3%
Maximum	1,050,900	1,044,000

Sector Summary

Unadjusted	Goods-Producing	Service-Providing
Current	93,900	814,600
Monthly Change	-3,200	11,800
Annual Change	-3,600	-122,700
Annual Growth Rate	-3.7%	-13.1%
Maximum	139,900	950,700

[Las Vegas MSA Summary](#)

Reno Employment



Reno Employment

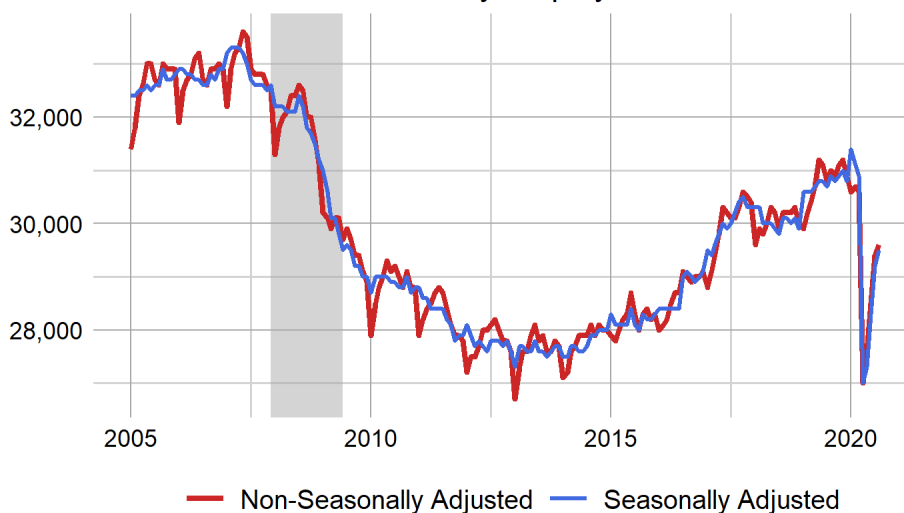
	Unadjusted	Adjusted
Current	233,000	233,500
Monthly Change	2,700	1,900
Annual Change	-14,500	-13,500
Annual Growth Rate	-5.9%	-5.5%
Maximum	254,000	250,800

Sector Summary

Unadjusted	Goods-Producing	Service-Providing
Current	44,300	188,700
Monthly Change	100	2,600
Annual Change	-300	-14,200
Annual Growth Rate	-0.7%	-7.0%
Maximum	44,800	210,200

[Reno MSA Summary](#)

Carson City Employment



Carson City Employment

	Unadjusted	Adjusted
Current	29,600	29,500
Monthly Change	200	300
Annual Change	-1,400	-1,400
Annual Growth Rate	-4.5%	-4.5%
Maximum	33,600	33,300

Sector Summary

Unadjusted	Goods-Producing	Service-Providing
Current	4,200	25,400
Monthly Change	0	200
Annual Change	-200	-1,200
Annual Growth Rate	-4.5%	-4.5%
Maximum	5,800	28,300

[Carson City MSA Summary](#)

For more information visit our [CES Page](#), see the summary tables at the end of the document, or check out our dashboards for a [CES summary](#) or [industry](#) estimates.

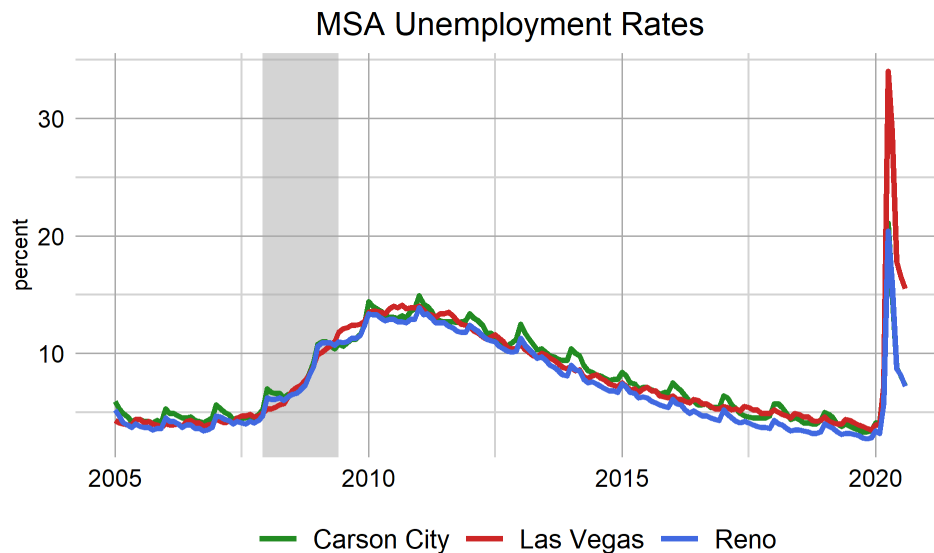
Local Area Unemployment Statistics ([LAUS](#))

Figures for our unemployment estimates come from the Local Area Unemployment Statistics (LAUS) program sponsored by the (BLS-LAUS). This program produces monthly and annual employment, unemployment, and labor force data for census regions, states, counties, metropolitan areas, and many large cities, based on place of residence.

The Las Vegas MSA's unemployment rate was 15.5 percent in August, decreasing from 16.6 percent in July, and up from 4.1 percent in August 2019, non-seasonally adjusted. The number of unemployed individuals decreased by -12,533 since July for a current level of 170,575 people, which is 124,432 more unemployed people than August 2019. The labor force in Las Vegas is currently 1,102,926 people, which is -1,230 less people than July, and is down -34,449 people since August 2019.

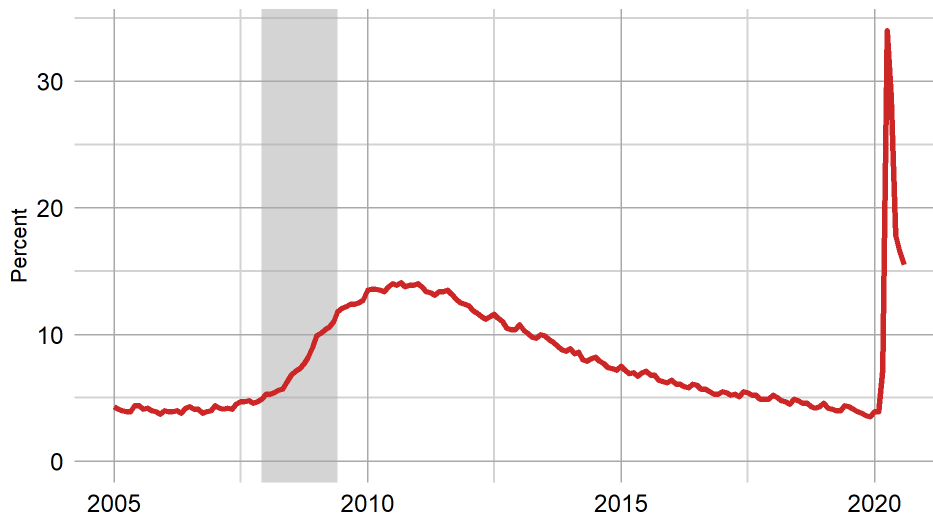
The Reno MSA's unemployment rate was 7.2 percent in August, decreasing from 8.2 percent in July, and up from 3.1 percent in August 2019, non-seasonally adjusted. The number of unemployed individuals decreased by -2,277 since July for a current level of 17,779 people, which is 9,836 more unemployed people than August 2019. The labor force in Reno is currently 246,005 people, which is 763 more people than July, and is down -12,287 people since August 2019.

The Carson City MSA's unemployment rate was 7.3 percent in August, decreasing from 8.1 percent in July, and up from 3.6 percent in August 2019, non-seasonally adjusted. The number of unemployed individuals decreased by 201 since July for a current level of 1,856 people, which is 896 more unemployed people than August 2019. The labor force in Carson City is currently 25,434 people, which is 25 more people than July, and is down -1,001 people since August 2019.



Due to the magnitude of labor force changes during the COVID-19 pandemic, the BLS has temporarily modified the methodology used for sub-state estimation. These changes impact all small county (areas not part of an MSA) LAUS employment estimates and ties their growth rate to the changes seen statewide (excluding Clark county). Unemployment estimates are unaffected by this change in methodology.

Las Vegas Unemployment Rate



Las Vegas LAUS Summary

Unemployment Rate

Unemployment Rate	15.5
Previous Month	16.6
Previous Year	4.1
Maximum Rate	34

Unemployed Individuals

Unemployment Level	170,575
Monthly Change	-12,533
Annual Change	124,432
Maximum Level	359,352

[Las Vegas MSA Summary](#)

Reno Unemployment Rate



Reno LAUS Summary

Unemployment Rate

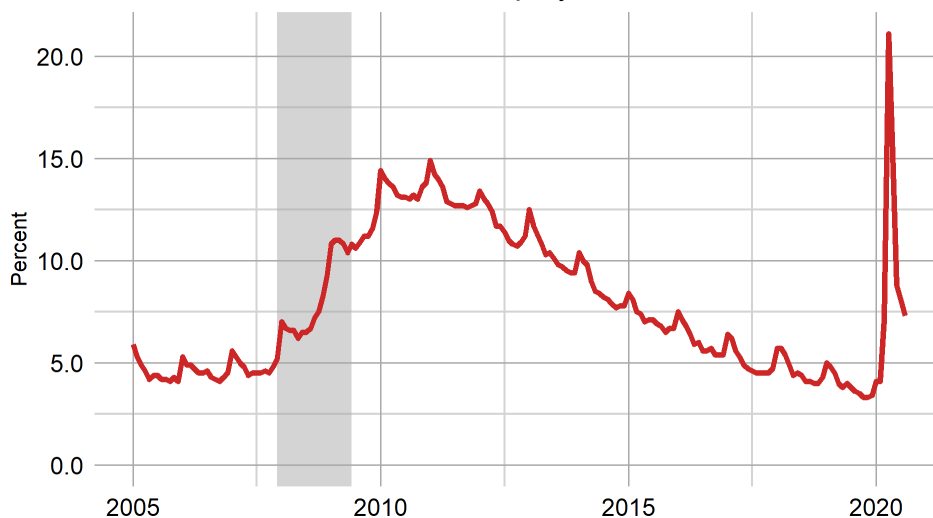
Unemployment Rate	7.2
Previous Month	8.2
Previous Year	3.1
Maximum Rate	20.4

Unemployed Individuals

Unemployment Level	17,779
Monthly Change	-2,277
Annual Change	9,836
Maximum Level	45,669

[Reno MSA Summary](#)

Carson Unemployment Rate



Carson City LAUS Summary

Unemployment Rate

Unemployment Rate	7.3
Previous Month	8.1
Previous Year	3.6
Maximum Rate	21.1

Unemployed Individuals

Unemployment Level	1,856
Monthly Change	-201
Annual Change	896
Maximum Level	4,982

[Carson City MSA Summary](#)

Unadjusted Local Area Unemployment Statistics

	Labor Force	Employed	Unemployed	Unemployment Rate
Nevada	1,494,549	1,296,486	198,063	13.3
Metropolitan Statistical Areas				
Carson City MSA	25,434	23,578	1,856	7.3
Las Vegas - Paradise MSA	1,102,926	932,351	170,575	15.5
Reno - Sparks MSA	246,005	228,226	17,779	7.2
Combined Statistical Areas				
Reno-Carson City-Fernley, Nv Combined Statistical Area	316,221	293,182	23,039	7.3
Counties				
Churchill County	10,456	9,905	551	5.3
Clark County	1,102,926	932,351	170,575	15.5
Douglas County	22,545	20,910	1,635	7.3
Elko County	25,443	24,247	1,196	4.7
Esmeralda County	397	380	17	4.3
Eureka County	896	861	35	3.9
Humboldt County	7,524	7,163	361	4.8
Lander County	3,000	2,870	130	4.3
Lincoln County	1,900	1,805	95	5.0
Lyon County	22,237	20,468	1,769	8.0
Mineral County	1,946	1,829	117	6.0
Nye County	17,187	15,531	1,656	9.6
Pershing County	2,269	2,160	109	4.8
Storey County	1,950	1,799	151	7.7
Washoe County	244,055	226,427	17,628	7.2
White Pine County	4,384	4,202	182	4.2
Carson City	25,434	23,578	1,856	7.3
Micropolitan Statistical Areas				
Elko Micropolitan Area	26,339	25,108	1,231	4.7
Fallon Micropolitan Area	10,456	9,905	551	5.3
Fernley Micropolitan Area	22,237	20,468	1,769	8.0
Gardnerville Micropolitan Area	22,545	20,910	1,635	7.3
Pahrump Micropolitan Area	17,187	15,531	1,656	9.6
Winnemucca Micropolitan Area	7,524	7,163	361	4.8
Cities				
Fernley City	8,298	7,603	695	8.4
Boulder City	6,963	6,242	721	10.4
Elko	9,942	9,466	476	4.8
Henderson	154,868	134,976	19,892	12.8
Las Vegas	304,163	259,317	44,846	14.7
Mesquite	7,121	6,585	536	7.5
North Las Vegas	111,708	94,472	17,236	15.4
Reno	132,064	122,122	9,942	7.5
Sparks	54,825	50,818	4,007	7.3

Visit our [LAUS page](#) for more information, see the summary tables for industry summaries by area, or check out our [dashboard](#) for a look at each area.

Unemployment Insurance Benefits (UI)

In August, unemployment insurance (UI) continued to see fewer initial claims across most of Nevada's counties. Initial claims, which totaled 49,595 statewide in August, saw declines in most counties, with Esmeralda, Lander, Storey, and White Pine showing minimal increases in their weekly average. Continued claims, which are a proxy for the number of persons filing for regular UI benefits in each week, saw the weekly average fall in all but one county in the month. For the state's largest counties, Clark County saw an average of 209,084 continued claims in August, down from nearly 243,000 in July. Washoe County saw the average weekly claims level fall nearly 3,900 to 18,301. For the remainder of the state, the average number of continued claims filed fell to 8,678, a decline of 1,493 or 14.7 percent.

With the overall level of claims trending down across most counties, we correspondingly saw continued declines in the level of weeks compensated and benefit payments paid in the month. Clark County saw \$282.7 million in benefits paid to claimants in the month, slightly higher than in July due to the month having five Sundays. The rest of the state, including Washoe but not including the unknown county claims, saw \$31.5 million in regular benefits paid out, a decline of \$3.4 million from July. Benefit exhaustions, also known as Final Payments, increased in nearly every county, with Clark County seeing nearly 17,000 claimants exhaust their benefits, up 6,158 from August. The rest of the state saw exhaustions increase by 650 to 2,294. As claimants exhaust their regular unemployment insurance benefits, they are likely to be eligible for both the federal Pandemic Emergency Unemployment Compensation (PEUC) and state benefit extension (SEB) programs.

UI Claims Activity by County						
	County	First Payments	Final Payments	Weeks Compensated	Benefit Payments	Average Weekly Benefit
	Carson City	141	160	6,917	\$2,182,051	\$315.46
	Churchill	35	38	1,464	\$456,486	\$311.81
	Clark	9,821	16,789	842,671	\$282,682,613	\$335.46
	Douglas	85	106	4,726	\$1,497,771	\$316.92
	Elko	84	73	3,861	\$1,180,388	\$305.72
	Esmeralda	1	1	35	\$12,696	\$362.74
	Eureka	0	2	56	\$22,662	\$404.68
	Humboldt	16	29	969	\$253,393	\$261.50
	Lander	14	9	343	\$109,994	\$320.68
	Lincoln	6	7	198	\$59,089	\$298.43
	Lyon	150	146	5,780	\$1,915,031	\$331.32
	Mineral	6	16	278	\$85,589	\$307.87
	Nye	112	124	5,614	\$1,685,682	\$300.26
	Pershing	6	5	127	\$39,768	\$313.13
	Storey	0	8	148	\$44,085	\$297.87
	Unknown	8,689	550	146,293	\$64,452,514	\$440.57
	Washoe	1,279	1,558	69,058	\$21,865,839	\$316.63
	White Pine	11	12	372	\$99,713	\$268.05
Statewide	—	20,456	19,633	1,088,910	\$378,645,363.80	—

Source: DETR Internal Reporting

Adjusted and Unadjusted Data

Seasonally adjusted estimates are used to show underlying economic trends by accounting for regularly seen seasonal patterns, and the result is smoother estimates. They are found by taking the difference of the unadjusted estimate and the expected seasonal movement.

Nevada Nonfarm Jobs Over the Month Change			
July - August			
Area	Unadjusted Change	Expected Seasonal Movement	Seasonally Adjusted Change
Nevada	10,900	4,400	6,500
Carson City MSA	200	-100	300
Las Vegas - Paradise MSA	8,600	2,700	5,900
Reno - Sparks MSA	2,700	800	1,900

Prepared by the Research and Analysis Bureau with contributions from: Alex Capello, Jason Gortari, Jeremy Hays, Michael La Rue, Dionny McDonnell, Christopher Robison, Dave Schmidt, Marianne Segurson, and Tim Wilcox.

Special thanks to all the R and RStudio developers that built the packages to make this possible. Packages used in this report include tidyverse, viridis, ggthemes, scales, data.table, RcppRoll, plotly, patchwork, reshape2, knitr, ggforce, DT, and gt.

This workforce product was funded by a grant awarded by the U.S. Department of Labor's Employment and Training Administration. The product was created by the recipient and does not necessarily reflect the official position of the U.S. Department of Labor. The U.S. Department of Labor makes no guarantees, warranties, or assurances of any kind, express or implied, with respect to such information, including any information on linked sites and including, but not limited to, accuracy of the information or its completeness, timeliness, usefulness, adequacy, continued availability, or ownership. This product is copyrighted by the institution that created it. Internal use by an organization and/or personal use by an individual for non-commercial purposes is permissible. All other uses require the prior authorization of the copyright owner.

LAUS Summary Tables

Non-Adjusted Unemployment Rates LAUS

	August 2020	July 2020	Monthly Change	August 2019	Yearly Change
Nevada	13.3	14.3	-1.0	3.9	9.4
Metropolitan Statistical Areas					
Carson City MSA	7.3	8.1	-0.8	3.6	3.7
Las Vegas - Paradise MSA	15.5	16.6	-1.1	4.1	11.4
Reno - Sparks MSA	7.2	8.2	-1.0	3.1	4.1
Combined Statistical Areas					
Reno-Carson City-Fernley, Nv Combined Statistical Area	7.3	8.2	-0.9	3.3	4.0
Counties					
Churchill County	5.3	5.8	-0.5	3.5	1.8
Clark County	15.5	16.6	-1.1	4.1	11.4
Douglas County	7.3	8.1	-0.8	3.6	3.7
Elko County	4.7	5.1	-0.4	2.8	1.9
Esmeralda County	4.3	3.8	0.5	3.8	0.5
Eureka County	3.9	4.2	-0.3	2.7	1.2
Humboldt County	4.8	5.1	-0.3	3.1	1.7
Lander County	4.3	4.6	-0.3	3.0	1.3
Lincoln County	5.0	5.0	0.0	3.7	1.3
Lyon County	8.0	8.4	-0.4	4.5	3.5
Mineral County	6.0	6.0	0.0	3.6	2.4
Nye County	9.6	9.9	-0.3	5.0	4.6
Pershing County	4.8	4.6	0.2	3.5	1.3
Storey County	7.7	8.7	-1.0	3.4	4.3
Washoe County	7.2	8.2	-1.0	3.1	4.1
White Pine County	4.2	4.0	0.2	2.8	1.4
Carson City	7.3	8.1	-0.8	3.6	3.7
Micropolitan Statistical Areas					
Elko Micropolitan Area	4.7	5.0	-0.3	2.8	1.9
Fallon Micropolitan Area	5.3	5.8	-0.5	3.5	1.8
Fernley Micropolitan Area	8.0	8.4	-0.4	4.5	3.5
Gardnerville Micropolitan Area	7.3	8.1	-0.8	3.6	3.7
Pahrump Micropolitan Area	9.6	9.9	-0.3	5.0	4.6
Winnemucca Micropolitan Area	4.8	5.1	-0.3	3.1	1.7
Cities					
Fernley City	8.4	8.8	-0.4	4.6	3.8
Boulder City	10.4	11.0	-0.6	3.9	6.5
Elko	4.8	4.9	-0.1	2.8	2.0
Henderson	12.8	13.8	-1.0	3.7	9.1
Las Vegas	14.7	15.8	-1.1	4.2	10.5
Mesquite	7.5	8.0	-0.5	3.6	3.9
North Las Vegas	15.4	16.6	-1.2	4.4	11.0
Reno	7.5	8.5	-1.0	3.1	4.4
Sparks	7.3	8.2	-0.9	3.0	4.3

Non-Seasonally Adjusted Labor Force Levels LAUS

	August 2020	July 2020	Monthly Change	August 2019	Yearly Change
Nevada	1,494,549	1,494,939	-390	1,548,152	-53,603
Metropolitan Statistical Areas					
Carson City MSA	25,434	25,409	25	26,435	-1,001
Las Vegas - Paradise MSA	1,102,926	1,104,156	-1,230	1,137,375	-34,449
Reno - Sparks MSA	246,005	245,242	763	258,292	-12,287
Combined Statistical Areas					
Reno-Carson City-Fernley, Nv Combined Statistical Area	316,221	315,398	823	331,384	-15,163
Counties					
Churchill County	10,456	10,489	-33	10,927	-471
Clark County	1,102,926	1,104,156	-1,230	1,137,375	-34,449
Douglas County	22,545	22,567	-22	23,511	-966
Elko County	25,443	25,452	-9	27,222	-1,779
Esmeralda County	397	398	-1	443	-46
Eureka County	896	914	-18	1,027	-131
Humboldt County	7,524	7,550	-26	8,064	-540
Lander County	3,000	3,001	-1	3,180	-180
Lincoln County	1,900	1,903	-3	2,074	-174
Lyon County	22,237	22,180	57	23,146	-909
Mineral County	1,946	1,935	11	2,072	-126
Nye County	17,187	17,105	82	17,206	-19
Pershing County	2,269	2,275	-6	2,484	-215
Storey County	1,950	1,940	10	2,040	-90
Washoe County	244,055	243,302	753	256,252	-12,197
White Pine County	4,384	4,363	21	4,696	-312
Carson City	25,434	25,409	25	26,435	-1,001
Micropolitan Statistical Areas					
Elko Micropolitan Area	26,339	26,366	-27	28,249	-1,910
Fallon Micropolitan Area	10,456	10,489	-33	10,927	-471
Fernley Micropolitan Area	22,237	22,180	57	23,146	-909
Gardnerville Micropolitan Area	22,545	22,567	-22	23,511	-966
Pahrump Micropolitan Area	17,187	17,105	82	17,206	-19
Winnemucca Micropolitan Area	7,524	7,550	-26	8,064	-540
Cities					
Fernley City	8,298	8,279	19	8,612	-314
Boulder City	6,963	6,929	34	7,606	-643
Elko	9,942	9,924	18	10,628	-686
Henderson	154,868	154,745	123	164,043	-9,175
Las Vegas	304,163	304,110	53	316,846	-12,683
Mesquite	7,121	7,068	53	7,993	-872
North Las Vegas	111,708	111,853	-145	115,609	-3,901
Reno	132,064	131,757	307	138,260	-6,196
Sparks	54,825	54,610	215	57,457	-2,632

Non-Seasonally Adjusted Employed Levels LAUS

	August 2020	July 2020	Monthly Change	August 2019	Yearly Change
Nevada	1,296,486	1,281,372	15,114	1,488,444	-191,958
Metropolitan Statistical Areas					
Carson City MSA	23,578	23,352	226	25,475	-1,897
Las Vegas - Paradise MSA	932,351	921,048	11,303	1,091,232	-158,881
Reno - Sparks MSA	228,226	225,186	3,040	250,349	-22,123
Combined Statistical Areas					
Reno-Carson City-Fernley, Nv Combined Statistical Area	293,182	289,590	3,592	320,595	-27,413
Counties					
Churchill County	9,905	9,883	22	10,548	-643
Clark County	932,351	921,048	11,303	1,091,232	-158,881
Douglas County	20,910	20,733	177	22,662	-1,752
Elko County	24,247	24,166	81	26,450	-2,203
Esmeralda County	380	383	-3	426	-46
Eureka County	861	876	-15	999	-138
Humboldt County	7,163	7,164	-1	7,818	-655
Lander County	2,870	2,862	8	3,085	-215
Lincoln County	1,805	1,807	-2	1,997	-192
Lyon County	20,468	20,319	149	22,109	-1,641
Mineral County	1,829	1,818	11	1,997	-168
Nye County	15,531	15,417	114	16,339	-808
Pershing County	2,160	2,171	-11	2,397	-237
Storey County	1,799	1,772	27	1,970	-171
Washoe County	226,427	223,414	3,013	248,379	-21,952
White Pine County	4,202	4,187	15	4,563	-361
Carson City	23,578	23,352	226	25,475	-1,897
Micropolitan Statistical Areas					
Elko Micropolitan Area	25,108	25,042	66	27,449	-2,341
Fallon Micropolitan Area	9,905	9,883	22	10,548	-643
Fernley Micropolitan Area	20,468	20,319	149	22,109	-1,641
Gardnerville Micropolitan Area	20,910	20,733	177	22,662	-1,752
Pahrump Micropolitan Area	15,531	15,417	114	16,339	-808
Winnemucca Micropolitan Area	7,163	7,164	-1	7,818	-655
Cities					
Fernley City	7,603	7,548	55	8,213	-610
Boulder City	6,242	6,166	76	7,306	-1,064
Elko	9,466	9,435	31	10,327	-861
Henderson	134,976	133,339	1,637	157,977	-23,001
Las Vegas	259,317	256,174	3,143	303,507	-44,190
Mesquite	6,585	6,506	79	7,708	-1,123
North Las Vegas	94,472	93,327	1,145	110,571	-16,099
Reno	122,122	120,496	1,626	133,961	-11,839
Sparks	50,818	50,142	676	55,745	-4,927

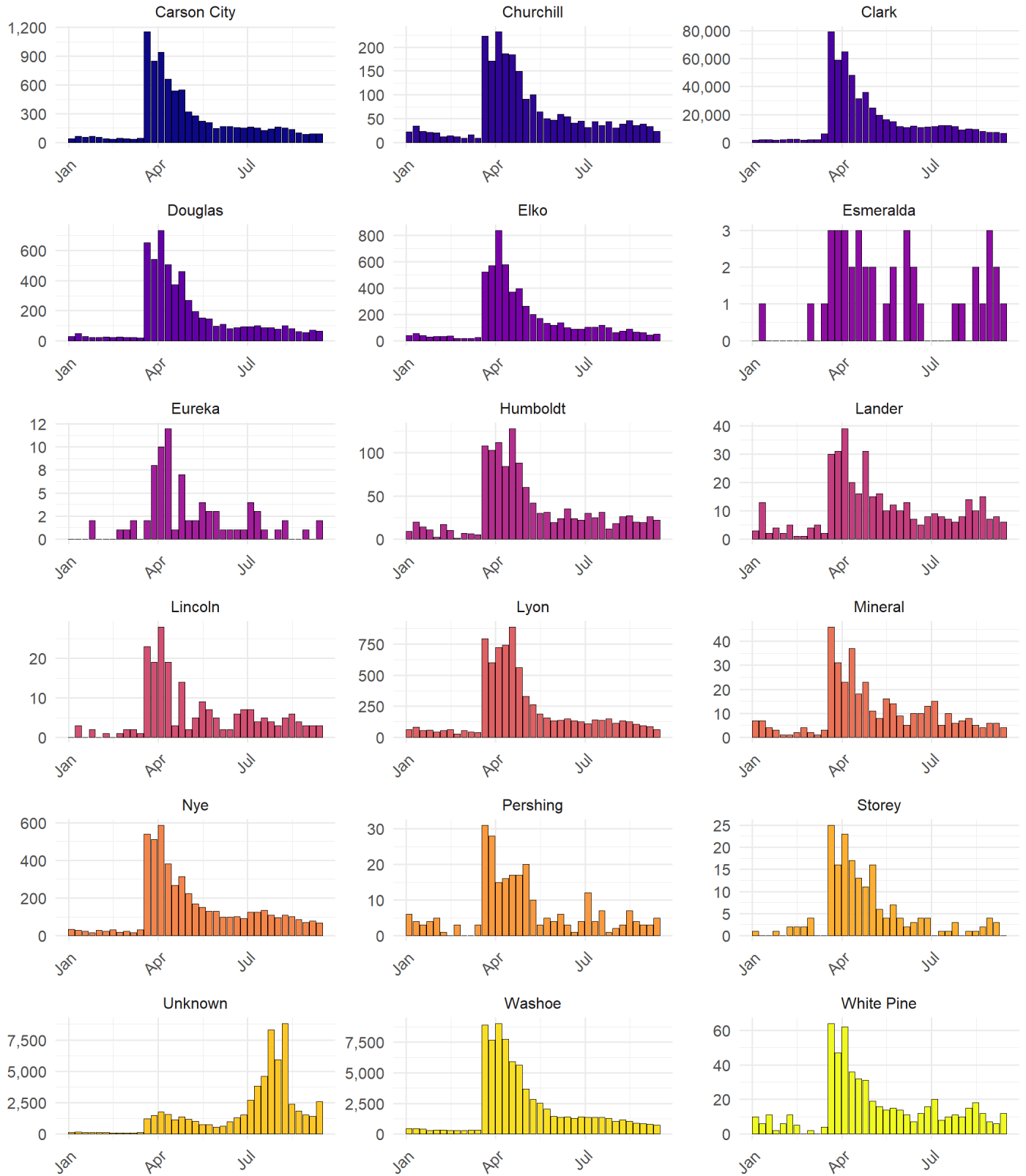
Non-Seasonally Adjusted Unemployed Levels LAUS

	August 2020	July 2020	Monthly Change	August 2019	Yearly Change
Nevada	198,063	213,567	-15,504	59,708	138,355
Metropolitan Statistical Areas					
Carson City MSA	1,856	2,057	-201	960	896
Las Vegas - Paradise MSA	170,575	183,108	-12,533	46,143	124,432
Reno - Sparks MSA	17,779	20,056	-2,277	7,943	9,836
Combined Statistical Areas					
Reno-Carson City-Fernley, Nv Combined Statistical Area	23,039	25,808	-2,769	10,789	12,250
Counties					
Churchill County	551	606	-55	379	172
Clark County	170,575	183,108	-12,533	46,143	124,432
Douglas County	1,635	1,834	-199	849	786
Elko County	1,196	1,286	-90	772	424
Esmeralda County	17	15	2	17	0
Eureka County	35	38	-3	28	7
Humboldt County	361	386	-25	246	115
Lander County	130	139	-9	95	35
Lincoln County	95	96	-1	77	18
Lyon County	1,769	1,861	-92	1,037	732
Mineral County	117	117	0	75	42
Nye County	1,656	1,688	-32	867	789
Pershing County	109	104	5	87	22
Storey County	151	168	-17	70	81
Washoe County	17,628	19,888	-2,260	7,873	9,755
White Pine County	182	176	6	133	49
Carson City	1,856	2,057	-201	960	896
Micropolitan Statistical Areas					
Elko Micropolitan Area	1,231	1,324	-93	800	431
Fallon Micropolitan Area	551	606	-55	379	172
Fernley Micropolitan Area	1,769	1,861	-92	1,037	732
Gardnerville Micropolitan Area	1,635	1,834	-199	849	786
Pahrump Micropolitan Area	1,656	1,688	-32	867	789
Winnemucca Micropolitan Area	361	386	-25	246	115
Cities					
Fernley City	695	731	-36	399	296
Boulder City	721	763	-42	300	421
Elko	476	489	-13	301	175
Henderson	19,892	21,406	-1,514	6,066	13,826
Las Vegas	44,846	47,936	-3,090	13,339	31,507
Mesquite	536	562	-26	285	251
North Las Vegas	17,236	18,526	-1,290	5,038	12,198
Reno	9,942	11,261	-1,319	4,299	5,643
Sparks	4,007	4,468	-461	1,712	2,295

UI Summary Tables

Initial Claims by County

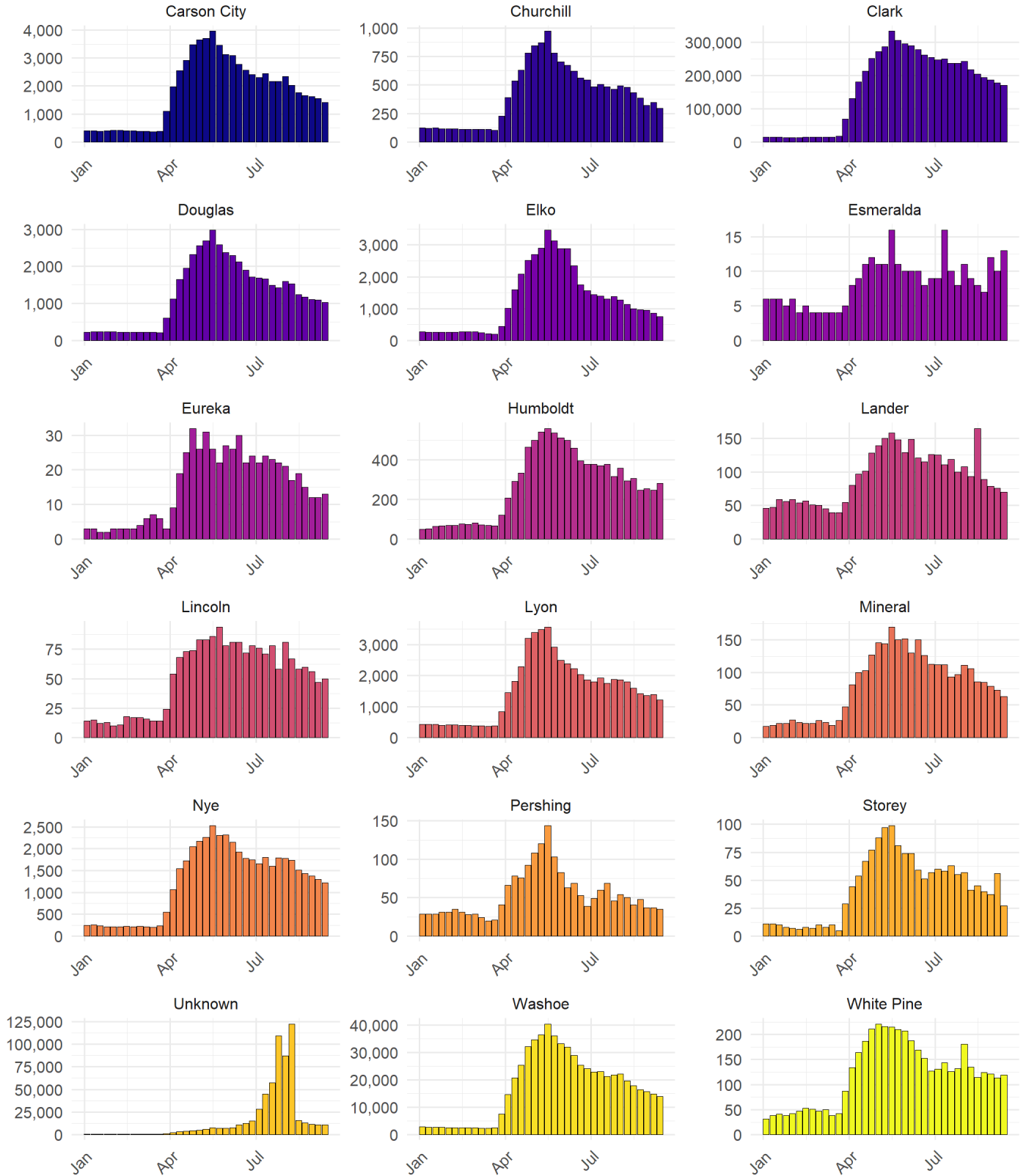
weekly claim totals since January 2020



Source: DETR Internal Reporting

Continued Claims by County

weekly claim totals since January 2020



Source: DETR Internal Reporting

Nevada Labor Force Summary

Statewide (Estimates in Thousands)

	Aug-20	Aug-19	+/- change	% change	Jul-20
Non-Seasonally Adjusted					
LABOR FORCE	1,494.55	1,548.152	-53.6	-3.5%	1,494.9
EMPLOYMENT	1,296.49	1,488.44	-192.0	-12.9%	1,281.4
UNEMPLOYMENT	198.06	59.71	138.35	231.7%	213.6
UNEMPLOYMENT RATE	13.3%	3.9%	9.4%	243.6%	14.3%
Seasonally Adjusted					
LABOR FORCE	1,493.64	1,548.251	-54.6	-3.5%	1,488.6
EMPLOYMENT	1,295.87	1,489.05	-193.2	-13.0%	1,277.9
UNEMPLOYMENT	197.77	59.20	138.57	234.1%	210.7
UNEMPLOYMENT RATE	13.2%	3.8%	9.4%	246.3%	14.2%

UNEMPLOYMENT RATES BASED ON UNROUNDED DATA

Employment adjusted by census relationships to reflect number of persons by place of residence.

Information compiled by DETR's Research & Analysis Bureau

Nevada Employment Summary

Seasonally Adjusted Current Employment Statistics					
Area	August 2020	Monthly Change	Monthly Rate	Yearly Change	Yearly Rate
Nevada	1,289,800	6,500	0.5%	-133,600	-9.4%
Carson City MSA	29,500	300	1.0%	-1,400	-4.5%
Las Vegas - Paradise MSA	910,600	5,900	0.7%	-127,400	-12.3%
Reno - Sparks MSA	233,500	1,900	0.8%	-13,500	-5.5%
Non-Seasonally Adjusted Current Employment Statistics					
Area	August 2020	Monthly Change	Monthly Rate	Yearly Change	Yearly Rate
Nevada	1,289,000	10,900	0.9%	-132,100	-9.3%
Carson City MSA	29,600	200	0.7%	-1,400	-4.5%
Las Vegas - Paradise MSA	908,500	8,600	1.0%	-126,300	-12.2%
Reno - Sparks MSA	233,000	2,700	1.2%	-14,500	-5.9%

Statewide & Large Areas LAUS Last 13 Months (Estimates in Thousands)

	Aug-19	Sep-19	Oct-19	Nov-19	Dec-19	Jan-20	Feb-20	Mar-20	Apr-20	May-20	Jun-20	Jul-20	Aug-20	12m Avg.
Nevada - Non-Seasonally Adjusted														
LABOR FORCE	1,548.2	1,552.4	1,555.2	1,554.6	1,550.1	1,560.9	1,573.0	1,561.5	1,425.5	1,382.2	1,502.7	1,494.9	1,494.5	1,517.3
EMPLOYMENT	1,488.4	1,494.7	1,499.7	1,501.6	1,497.9	1,501.0	1,513.5	1,454.2	999.8	1,035.1	1,272.4	1,281.4	1,296.5	1,362.3
UNEMPLOYMENT	59.7	57.7	55.4	53.0	52.3	59.9	59.5	107.3	428.7	347.1	230.3	213.6	198.1	155.2
UNEMPLOYMENT RATE	3.9%	3.7%	3.6%	3.4%	3.4%	3.8%	3.8%	6.9%	30.1%	25.1%	15.3%	14.3%	13.3%	10.6%
Nevada - Seasonally Adjusted														
LABOR FORCE	1,548.3	1,550.5	1,551.9	1,551.7	1,551.4	1,555.3	1,559.5	1,566.2	1,429.1	1,382.8	1,501.1	1,488.6	1,493.6	1,515.2
EMPLOYMENT	1,489.0	1,492.4	1,494.7	1,494.7	1,494.3	1,499.0	1,503.3	1,458.5	999.3	1,033.3	1,273.6	1,277.9	1,295.9	1,359.7
UNEMPLOYMENT	59.2	58.1	57.2	57.0	57.1	56.3	56.2	107.8	429.7	349.5	227.4	210.7	197.8	155.4
UNEMPLOYMENT RATE	3.8%	3.7%	3.7%	3.7%	3.7%	3.6%	3.6%	6.9%	30.1%	25.3%	15.2%	14.2%	13.2%	10.6%
Carson City MSA - Non-Seasonally Adjusted														
LABOR FORCE	26.4	26.4	26.4	26.3	26.3	26.6	26.9	26.8	23.6	22.7	25.0	25.4	25.4	25.7
EMPLOYMENT	25.5	25.5	25.5	25.4	25.4	25.5	25.8	24.9	18.6	19.3	22.8	23.4	23.6	23.8
UNEMPLOYMENT	1.0	0.9	0.9	0.9	0.9	1.1	1.1	1.9	5.0	3.5	2.2	2.1	1.9	1.9
UNEMPLOYMENT RATE	3.6%	3.5%	3.3%	3.3%	3.4%	4.1%	4.1%	7.1%	21.1%	15.2%	8.8%	8.1%	7.3%	7.4%
Las Vegas - Paradise MSA - Non-Seasonally Adjusted														
LABOR FORCE	1,137.4	1,138.1	1,139.0	1,139.5	1,136.5	1,145.9	1,154.1	1,143.8	1,055.9	1,019.2	1,110.6	1,104.2	1,102.9	1,115.8
EMPLOYMENT	1,091.2	1,093.5	1,096.0	1,098.7	1,096.6	1,101.2	1,109.4	1,061.7	696.5	725.3	912.5	921.0	932.4	987.1
UNEMPLOYMENT	46.1	44.6	42.9	40.8	39.9	44.8	44.8	82.1	359.4	293.9	198.1	183.1	170.6	128.7
UNEMPLOYMENT RATE	4.1%	3.9%	3.8%	3.6%	3.5%	3.9%	3.9%	7.2%	34.0%	28.8%	17.8%	16.6%	15.5%	11.9%
Reno - Sparks MSA - Non-Seasonally Adjusted														
LABOR FORCE	258.3	260.2	261.2	262.2	261.7	260.5	263.8	261.5	223.7	221.4	245.8	245.2	246.0	251.1
EMPLOYMENT	250.3	252.4	253.8	255.1	254.5	251.6	255.3	246.8	178.0	185.9	224.3	225.2	228.2	234.3
UNEMPLOYMENT	7.9	7.7	7.4	7.1	7.2	8.8	8.5	14.7	45.7	35.5	21.4	20.1	17.8	16.8
UNEMPLOYMENT RATE	3.1%	3.0%	2.8%	2.7%	2.8%	3.4%	3.2%	5.6%	20.4%	16.0%	8.7%	8.2%	7.2%	7.0%
Reno-Carson City-Fernley, Nv Combined Statistical Area - Non-Seasonally Adjusted														
LABOR FORCE	331.4	333.4	334.6	334.9	334.3	333.9	337.9	335.7	292.2	287.5	315.7	315.4	316.2	322.6
EMPLOYMENT	320.6	323.0	324.6	325.2	324.4	321.8	326.2	315.5	233.1	242.3	288.1	289.6	293.2	300.6
UNEMPLOYMENT	10.8	10.5	9.9	9.7	9.9	12.0	11.7	20.1	59.1	45.2	27.6	25.8	23.0	22.1
UNEMPLOYMENT RATE	3.3%	3.1%	3.0%	2.9%	3.0%	3.6%	3.5%	6.0%	20.2%	15.7%	8.7%	8.2%	7.3%	7.1%

Note: Unemployment rates are based on unrounded data.
Employment adjusted by census relationships to reflect number of persons by place of residence.
Information compiled by DETR's Research & Analysis Bureau

Counties LAUS Last 13 Months (Estimates in Thousands)

	Aug-19	Sep-19	Oct-19	Nov-19	Dec-19	Jan-20	Feb-20	Mar-20	Apr-20	May-20	Jun-20	Jul-20	Aug-20	12m Avg.
Churchill County - Non-Seasonally Adjusted														
LABOR FORCE	10.9	11.2	11.5	11.2	11.1	11.4	11.3	11.5	10.6	10.2	10.7	10.5	10.5	11.0
EMPLOYMENT	10.5	10.9	11.1	10.9	10.7	11.0	10.9	10.8	9.4	9.4	10.1	9.9	9.9	10.4
UNEMPLOYMENT	0.4	0.3	0.3	0.3	0.3	0.4	0.4	0.7	1.2	0.9	0.6	0.6	0.6	0.6
UNEMPLOYMENT RATE	3.5%	3.1%	3.0%	3.0%	3.0%	3.7%	3.6%	6.1%	11.3%	8.6%	5.7%	5.8%	5.3%	5.2%
Clark County - Non-Seasonally Adjusted														
LABOR FORCE	1,137.4	1,138.1	1,139.0	1,139.5	1,136.5	1,145.9	1,154.1	1,143.8	1,055.9	1,019.2	1,110.6	1,104.2	1,102.9	1,115.8
EMPLOYMENT	1,091.2	1,093.5	1,096.0	1,098.7	1,096.6	1,101.2	1,109.4	1,061.7	696.5	725.3	912.5	921.0	932.4	987.1
UNEMPLOYMENT	46.1	44.6	42.9	40.8	39.9	44.8	44.8	82.1	359.4	293.9	198.1	183.1	170.6	128.7
UNEMPLOYMENT RATE	4.1%	3.9%	3.8%	3.6%	3.5%	3.9%	3.9%	7.2%	34.0%	28.8%	17.8%	16.6%	15.5%	11.9%
Douglas County - Non-Seasonally Adjusted														
LABOR FORCE	23.5	23.5	23.4	23.1	23.1	23.3	23.5	23.4	22.8	22.1	22.7	22.6	22.5	23.0
EMPLOYMENT	22.7	22.7	22.7	22.3	22.3	22.4	22.6	21.8	18.5	18.8	20.7	20.7	20.9	21.4
UNEMPLOYMENT	0.8	0.8	0.8	0.8	0.8	0.9	0.9	1.6	4.3	3.3	2.1	1.8	1.6	1.6
UNEMPLOYMENT RATE	3.6%	3.4%	3.3%	3.4%	3.5%	4.0%	4.0%	6.8%	18.8%	14.9%	9.1%	8.1%	7.3%	7.2%
Elko County - Non-Seasonally Adjusted														
LABOR FORCE	27.2	27.2	27.3	26.9	26.6	27.0	27.1	27.3	26.9	26.6	25.7	25.5	25.4	26.6
EMPLOYMENT	26.4	26.4	26.6	26.2	26.0	26.2	26.2	25.9	23.2	23.4	24.4	24.2	24.2	25.2
UNEMPLOYMENT	0.8	0.7	0.7	0.7	0.7	0.9	0.9	1.4	3.8	3.1	1.4	1.3	1.2	1.4
UNEMPLOYMENT RATE	2.8%	2.6%	2.6%	2.6%	2.6%	3.3%	3.3%	5.1%	14.0%	11.8%	5.3%	5.1%	4.7%	5.2%
Esmeralda County - Non-Seasonally Adjusted														
LABOR FORCE	0.4	0.5	0.5	0.5	0.4	0.5	0.5	0.5	0.4	0.4	0.4	0.4	0.4	0.4
EMPLOYMENT	0.4	0.5	0.5	0.4	0.4	0.5	0.4	0.4	0.4	0.4	0.4	0.4	0.4	0.4
UNEMPLOYMENT	0.0	0.0	0.0	0.0	0.0	0.0	0.0	0.0	0.0	0.0	0.0	0.0	0.0	0.0
UNEMPLOYMENT RATE	3.8%	3.8%	3.7%	3.0%	4.3%	3.8%	3.9%	5.9%	6.8%	5.4%	3.6%	3.8%	4.3%	4.3%
Eureka County - Non-Seasonally Adjusted														
LABOR FORCE	1.0	1.1	1.2	1.1	1.1	1.2	1.1	1.2	1.0	0.9	1.0	0.9	0.9	1.1
EMPLOYMENT	1.0	1.1	1.2	1.1	1.0	1.1	1.1	1.1	0.9	0.9	1.0	0.9	0.9	1.0
UNEMPLOYMENT	0.0	0.0	0.0	0.0	0.0	0.0	0.0	0.0	0.1	0.0	0.0	0.0	0.0	0.0
UNEMPLOYMENT RATE	2.7%	2.4%	2.0%	1.9%	2.2%	2.2%	2.4%	4.0%	6.3%	4.1%	3.6%	4.2%	3.9%	3.3%

Note: Unemployment rates are based on unrounded data.
Employment adjusted by census relationships to reflect number of persons by place of residence.
Information compiled by DETR's Research & Analysis Bureau

Counties LAUS Last 13 Months (Estimates in Thousands)

	Aug-19	Sep-19	Oct-19	Nov-19	Dec-19	Jan-20	Feb-20	Mar-20	Apr-20	May-20	Jun-20	Jul-20	Aug-20	12m Avg.
Humboldt County - Non-Seasonally Adjusted														
LABOR FORCE	8.1	8.4	8.6	8.3	8.1	8.4	8.3	8.5	7.7	7.6	7.8	7.6	7.5	8.1
EMPLOYMENT	7.8	8.2	8.4	8.1	7.9	8.1	8.0	8.1	7.1	7.0	7.4	7.2	7.2	7.7
UNEMPLOYMENT	0.2	0.2	0.2	0.2	0.2	0.3	0.3	0.4	0.6	0.6	0.4	0.4	0.4	0.4
UNEMPLOYMENT RATE	3.1%	2.7%	2.6%	2.7%	2.6%	3.2%	3.3%	5.2%	8.4%	7.8%	5.1%	5.1%	4.8%	4.4%
Lander County - Non-Seasonally Adjusted														
LABOR FORCE	3.2	3.2	3.3	3.2	3.2	3.3	3.3	3.3	3.0	2.9	3.0	3.0	3.0	3.1
EMPLOYMENT	3.1	3.1	3.2	3.1	3.1	3.1	3.1	3.1	2.7	2.7	2.9	2.9	2.9	3.0
UNEMPLOYMENT	0.1	0.1	0.1	0.1	0.1	0.1	0.1	0.2	0.2	0.2	0.1	0.1	0.1	0.1
UNEMPLOYMENT RATE	3.0%	2.9%	2.8%	2.9%	3.0%	3.9%	3.7%	5.8%	7.9%	6.1%	4.4%	4.6%	4.3%	4.4%
Lincoln County - Non-Seasonally Adjusted														
LABOR FORCE	2.1	2.2	2.2	2.2	2.1	2.2	2.2	2.2	1.9	1.8	2.0	1.9	1.9	2.1
EMPLOYMENT	2.0	2.1	2.2	2.1	2.0	2.1	2.1	2.1	1.7	1.7	1.9	1.8	1.8	2.0
UNEMPLOYMENT	0.1	0.1	0.1	0.1	0.1	0.1	0.1	0.1	0.2	0.1	0.1	0.1	0.1	0.1
UNEMPLOYMENT RATE	3.7%	3.4%	3.3%	3.2%	3.2%	3.7%	3.8%	6.1%	9.0%	6.3%	4.8%	5.0%	5.0%	4.7%
Lyon County - Non-Seasonally Adjusted														
LABOR FORCE	23.1	23.4	23.5	23.4	23.2	23.5	23.6	23.9	22.1	21.2	22.2	22.2	22.2	22.9
EMPLOYMENT	22.1	22.3	22.6	22.4	22.2	22.3	22.5	22.0	18.0	18.3	20.3	20.3	20.5	21.1
UNEMPLOYMENT	1.0	1.0	0.9	0.9	1.0	1.2	1.2	2.0	4.2	2.9	1.9	1.9	1.8	1.7
UNEMPLOYMENT RATE	4.5%	4.3%	4.0%	4.0%	4.1%	5.0%	5.0%	8.2%	18.9%	13.8%	8.5%	8.4%	8.0%	7.7%
Mineral County - Non-Seasonally Adjusted														
LABOR FORCE	2.1	2.0	2.0	2.0	2.0	2.0	2.0	2.1	2.0	2.0	1.9	1.9	1.9	2.0
EMPLOYMENT	2.0	2.0	1.9	1.9	1.9	1.9	1.9	2.0	1.8	1.8	1.8	1.8	1.8	1.9
UNEMPLOYMENT	0.1	0.1	0.1	0.1	0.1	0.1	0.1	0.1	0.2	0.2	0.1	0.1	0.1	0.1
UNEMPLOYMENT RATE	3.6%	3.6%	3.4%	3.3%	3.4%	4.1%	3.9%	6.4%	10.9%	8.3%	5.6%	6.0%	6.0%	5.4%
Nye County - Non-Seasonally Adjusted														
LABOR FORCE	17.2	17.6	17.7	17.6	17.5	17.8	17.9	18.0	17.2	16.7	17.1	17.1	17.2	17.5
EMPLOYMENT	16.3	16.7	16.9	16.8	16.7	17.0	17.1	16.5	13.9	14.1	15.5	15.4	15.5	16.0
UNEMPLOYMENT	0.9	0.9	0.8	0.8	0.8	0.9	0.9	1.5	3.4	2.6	1.6	1.7	1.7	1.5
UNEMPLOYMENT RATE	5.0%	4.9%	4.6%	4.4%	4.5%	5.0%	4.9%	8.4%	19.5%	15.3%	9.5%	9.9%	9.6%	8.4%

Note: Unemployment rates are based on unrounded data.

Employment adjusted by census relationships to reflect number of persons by place of residence.

Information compiled by DETR's Research & Analysis Bureau

Counties LAUS Last 13 Months (Estimates in Thousands)

	Aug-19	Sep-19	Oct-19	Nov-19	Dec-19	Jan-20	Feb-20	Mar-20	Apr-20	May-20	Jun-20	Jul-20	Aug-20	12m Avg.
Pershing County - Non-Seasonally Adjusted														
LABOR FORCE	2.5	2.6	2.7	2.6	2.5	2.6	2.6	2.7	2.4	2.3	2.4	2.3	2.3	2.5
EMPLOYMENT	2.4	2.5	2.6	2.5	2.4	2.5	2.5	2.5	2.2	2.1	2.3	2.2	2.2	2.4
UNEMPLOYMENT	0.1	0.1	0.1	0.1	0.1	0.1	0.1	0.2	0.2	0.1	0.1	0.1	0.1	0.1
UNEMPLOYMENT RATE	3.5%	3.5%	3.3%	3.6%	3.8%	4.0%	4.4%	6.7%	9.1%	6.3%	4.3%	4.6%	4.8%	4.9%
Storey County - Non-Seasonally Adjusted														
LABOR FORCE	2.0	2.1	2.1	2.1	2.1	2.1	2.1	2.1	1.8	1.7	1.9	1.9	2.0	2.0
EMPLOYMENT	2.0	2.0	2.0	2.0	2.0	2.0	2.0	1.9	1.4	1.5	1.8	1.8	1.8	1.8
UNEMPLOYMENT	0.1	0.1	0.1	0.1	0.1	0.1	0.1	0.1	0.4	0.3	0.2	0.2	0.2	0.1
UNEMPLOYMENT RATE	3.4%	3.2%	2.9%	3.1%	3.5%	3.8%	3.8%	6.4%	22.7%	15.9%	8.9%	8.7%	7.7%	7.6%
Washoe County - Non-Seasonally Adjusted														
LABOR FORCE	256.3	258.1	259.1	260.1	259.6	258.4	261.7	259.5	221.9	219.7	243.8	243.3	244.1	249.1
EMPLOYMENT	248.4	250.4	251.8	253.0	252.5	249.6	253.3	244.9	176.6	184.5	222.6	223.4	226.4	232.4
UNEMPLOYMENT	7.9	7.7	7.3	7.0	7.1	8.8	8.4	14.6	45.3	35.2	21.2	19.9	17.6	16.7
UNEMPLOYMENT RATE	3.1%	3.0%	2.8%	2.7%	2.7%	3.4%	3.2%	5.6%	20.4%	16.0%	8.7%	8.2%	7.2%	7.0%
White Pine County - Non-Seasonally Adjusted														
LABOR FORCE	4.7	4.8	4.8	4.7	4.6	4.7	4.7	4.7	4.4	4.3	4.4	4.4	4.4	4.6
EMPLOYMENT	4.6	4.6	4.6	4.5	4.5	4.5	4.5	4.5	4.0	4.1	4.2	4.2	4.2	4.4
UNEMPLOYMENT	0.1	0.1	0.1	0.1	0.1	0.1	0.2	0.2	0.3	0.2	0.2	0.2	0.2	0.2
UNEMPLOYMENT RATE	2.8%	2.5%	2.5%	2.5%	2.5%	3.0%	3.3%	5.2%	7.7%	5.4%	4.0%	4.0%	4.2%	3.9%
Carson City - Non-Seasonally Adjusted														
LABOR FORCE	26.4	26.4	26.4	26.3	26.3	26.6	26.9	26.8	23.6	22.7	25.0	25.4	25.4	25.7
EMPLOYMENT	25.5	25.5	25.5	25.4	25.4	25.5	25.8	24.9	18.6	19.3	22.8	23.4	23.6	23.8
UNEMPLOYMENT	1.0	0.9	0.9	0.9	0.9	1.1	1.1	1.9	5.0	3.5	2.2	2.1	1.9	1.9
UNEMPLOYMENT RATE	3.6%	3.5%	3.3%	3.3%	3.4%	4.1%	4.1%	7.1%	21.1%	15.2%	8.8%	8.1%	7.3%	7.4%

Note: Unemployment rates are based on unrounded data.
Employment adjusted by census relationships to reflect number of persons by place of residence.
Information compiled by DETR's Research & Analysis Bureau

Micropolitan Areas LAUS Last 13 Months (Estimates in Thousands)

	Aug-19	Sep-19	Oct-19	Nov-19	Dec-19	Jan-20	Feb-20	Mar-20	Apr-20	May-20	Jun-20	Jul-20	Aug-20	12m Avg.
Elko Micropolitan Area - Non-Seasonally Adjusted														
LABOR FORCE	28.2	28.3	28.5	28.0	27.7	28.2	28.2	28.5	27.9	27.5	26.7	26.4	26.3	27.7
EMPLOYMENT	27.4	27.6	27.7	27.3	27.0	27.3	27.3	27.1	24.1	24.3	25.3	25.0	25.1	26.3
UNEMPLOYMENT	0.8	0.7	0.7	0.7	0.7	0.9	0.9	1.4	3.8	3.2	1.4	1.3	1.2	1.4
UNEMPLOYMENT RATE	2.8%	2.6%	2.5%	2.6%	2.6%	3.2%	3.2%	5.1%	13.7%	11.6%	5.3%	5.0%	4.7%	5.2%
Fallon Micropolitan Area - Non-Seasonally Adjusted														
LABOR FORCE	10.9	11.2	11.5	11.2	11.1	11.4	11.3	11.5	10.6	10.2	10.7	10.5	10.5	11.0
EMPLOYMENT	10.5	10.9	11.1	10.9	10.7	11.0	10.9	10.8	9.4	9.4	10.1	9.9	9.9	10.4
UNEMPLOYMENT	0.4	0.3	0.3	0.3	0.3	0.4	0.4	0.7	1.2	0.9	0.6	0.6	0.6	0.6
UNEMPLOYMENT RATE	3.5%	3.1%	3.0%	3.0%	3.0%	3.7%	3.6%	6.1%	11.3%	8.6%	5.7%	5.8%	5.3%	5.2%
Fernley Micropolitan Area - Non-Seasonally Adjusted														
LABOR FORCE	23.1	23.4	23.5	23.4	23.2	23.5	23.6	23.9	22.1	21.2	22.2	22.2	22.2	22.9
EMPLOYMENT	22.1	22.3	22.6	22.4	22.2	22.3	22.5	22.0	18.0	18.3	20.3	20.3	20.5	21.1
UNEMPLOYMENT	1.0	1.0	0.9	0.9	1.0	1.2	1.2	2.0	4.2	2.9	1.9	1.9	1.8	1.7
UNEMPLOYMENT RATE	4.5%	4.3%	4.0%	4.0%	4.1%	5.0%	5.0%	8.2%	18.9%	13.8%	8.5%	8.4%	8.0%	7.7%
Gardnerville Micropolitan Area - Non-Seasonally Adjusted														
LABOR FORCE	23.5	23.5	23.4	23.1	23.1	23.3	23.5	23.4	22.8	22.1	22.7	22.6	22.5	23.0
EMPLOYMENT	22.7	22.7	22.7	22.3	22.3	22.4	22.6	21.8	18.5	18.8	20.7	20.7	20.9	21.4
UNEMPLOYMENT	0.8	0.8	0.8	0.8	0.8	0.9	0.9	1.6	4.3	3.3	2.1	1.8	1.6	1.6
UNEMPLOYMENT RATE	3.6%	3.4%	3.3%	3.4%	3.5%	4.0%	4.0%	6.8%	18.8%	14.9%	9.1%	8.1%	7.3%	7.2%
Pahrump Micropolitan Area - Non-Seasonally Adjusted														
LABOR FORCE	17.2	17.6	17.7	17.6	17.5	17.8	17.9	18.0	17.2	16.7	17.1	17.1	17.2	17.5
EMPLOYMENT	16.3	16.7	16.9	16.8	16.7	17.0	17.1	16.5	13.9	14.1	15.5	15.4	15.5	16.0
UNEMPLOYMENT	0.9	0.9	0.8	0.8	0.8	0.9	0.9	1.5	3.4	2.6	1.6	1.7	1.7	1.5
UNEMPLOYMENT RATE	5.0%	4.9%	4.6%	4.4%	4.5%	5.0%	4.9%	8.4%	19.5%	15.3%	9.5%	9.9%	9.6%	8.4%
Winnemucca Micropolitan Area - Non-Seasonally Adjusted														
LABOR FORCE	8.1	8.4	8.6	8.3	8.1	8.4	8.3	8.5	7.7	7.6	7.8	7.6	7.5	8.1
EMPLOYMENT	7.8	8.2	8.4	8.1	7.9	8.1	8.0	8.1	7.1	7.0	7.4	7.2	7.2	7.7
UNEMPLOYMENT	0.2	0.2	0.2	0.2	0.2	0.3	0.3	0.4	0.6	0.6	0.4	0.4	0.4	0.4
UNEMPLOYMENT RATE	3.1%	2.7%	2.6%	2.7%	2.6%	3.2%	3.3%	5.2%	8.4%	7.8%	5.1%	5.1%	4.8%	4.4%

Note: Unemployment rates are based on unrounded data.

Employment adjusted by census relationships to reflect number of persons by place of residence.

Information compiled by DETR's Research & Analysis Bureau

Northern Cities LAUS Last 13 Months (Estimates in Thousands)

	Aug-19	Sep-19	Oct-19	Nov-19	Dec-19	Jan-20	Feb-20	Mar-20	Apr-20	May-20	Jun-20	Jul-20	Aug-20	12m Avg.
Fernley City - Non-Seasonally Adjusted														
LABOR FORCE	8.6	8.7	8.7	8.7	8.6	8.7	8.8	8.9	8.3	8.0	8.3	8.3	8.3	8.5
EMPLOYMENT	8.2	8.3	8.4	8.3	8.3	8.3	8.3	8.2	6.7	6.8	7.6	7.5	7.6	7.9
UNEMPLOYMENT	0.4	0.4	0.3	0.3	0.4	0.4	0.4	0.8	1.7	1.2	0.7	0.7	0.7	0.7
UNEMPLOYMENT RATE	4.6%	4.2%	3.9%	4.0%	4.3%	4.9%	4.9%	8.4%	20.0%	14.7%	9.0%	8.8%	8.4%	8.0%
Elko - Non-Seasonally Adjusted														
LABOR FORCE	10.6	10.6	10.7	10.5	10.4	10.6	10.6	10.7	10.2	10.0	10.0	9.9	9.9	10.3
EMPLOYMENT	10.3	10.3	10.4	10.2	10.1	10.2	10.2	10.1	9.0	9.2	9.5	9.4	9.5	9.9
UNEMPLOYMENT	0.3	0.3	0.3	0.3	0.3	0.4	0.4	0.6	1.2	0.9	0.5	0.5	0.5	0.5
UNEMPLOYMENT RATE	2.8%	2.5%	2.6%	2.6%	2.6%	3.4%	3.3%	5.5%	11.6%	8.6%	5.0%	4.9%	4.8%	4.8%
Reno - Non-Seasonally Adjusted														
LABOR FORCE	138.3	139.2	139.7	140.3	140.0	139.3	141.1	139.7	120.5	119.7	132.1	131.8	132.1	134.6
EMPLOYMENT	134.0	135.1	135.8	136.5	136.2	134.6	136.6	132.1	95.3	99.5	120.0	120.5	122.1	125.4
UNEMPLOYMENT	4.3	4.1	3.9	3.8	3.8	4.7	4.5	7.6	25.2	20.2	12.0	11.3	9.9	9.3
UNEMPLOYMENT RATE	3.1%	3.0%	2.8%	2.7%	2.7%	3.4%	3.2%	5.5%	20.9%	16.9%	9.1%	8.5%	7.5%	7.2%
Sparks - Non-Seasonally Adjusted														
LABOR FORCE	57.5	57.9	58.1	58.4	58.2	57.9	58.7	58.2	50.2	49.5	54.7	54.6	54.8	55.9
EMPLOYMENT	55.7	56.2	56.5	56.8	56.7	56.0	56.9	55.0	39.6	41.4	50.0	50.1	50.8	52.2
UNEMPLOYMENT	1.7	1.7	1.6	1.6	1.6	1.9	1.8	3.2	10.5	8.1	4.8	4.5	4.0	3.8
UNEMPLOYMENT RATE	3.0%	2.9%	2.8%	2.7%	2.7%	3.2%	3.1%	5.5%	21.0%	16.3%	8.7%	8.2%	7.3%	7.0%
Note: Unemployment rates are based on unrounded data.														
Employment adjusted by census relationships to reflect number of persons by place of residence.														
Information compiled by DETR's Research & Analysis Bureau														

Southern Cities LAUS Last 13 Months (Estimates in Thousands)

	Aug-19	Sep-19	Oct-19	Nov-19	Dec-19	Jan-20	Feb-20	Mar-20	Apr-20	May-20	Jun-20	Jul-20	Aug-20	12m Avg.
Boulder City - Non-Seasonally Adjusted														
LABOR FORCE	7.6	7.6	7.6	7.6	7.6	7.7	7.7	7.6	6.2	6.0	6.9	6.9	7.0	7.2
EMPLOYMENT	7.3	7.3	7.3	7.4	7.3	7.4	7.4	7.1	4.7	4.9	6.1	6.2	6.2	6.6
UNEMPLOYMENT	0.3	0.3	0.3	0.3	0.3	0.3	0.3	0.5	1.6	1.2	0.8	0.8	0.7	0.6
UNEMPLOYMENT RATE	3.9%	3.9%	3.6%	3.4%	3.5%	3.9%	3.7%	6.7%	25.0%	19.3%	11.6%	11.0%	10.4%	8.8%
Henderson - Non-Seasonally Adjusted														
LABOR FORCE	164.0	164.3	164.4	164.4	164.0	165.3	166.6	164.5	143.1	138.1	154.7	154.7	154.9	158.2
EMPLOYMENT	158.0	158.3	158.7	159.1	158.8	159.4	160.6	153.7	100.8	105.0	132.1	133.3	135.0	142.9
UNEMPLOYMENT	6.1	6.0	5.7	5.4	5.2	5.9	6.0	10.8	42.3	33.1	22.6	21.4	19.9	15.3
UNEMPLOYMENT RATE	3.7%	3.7%	3.5%	3.3%	3.2%	3.6%	3.6%	6.5%	29.5%	23.9%	14.6%	13.8%	12.8%	10.2%
Las Vegas - Non-Seasonally Adjusted														
LABOR FORCE	316.8	316.9	317.2	317.2	316.2	319.1	321.2	318.4	285.3	276.7	304.7	304.1	304.2	308.4
EMPLOYMENT	303.5	304.1	304.8	305.6	305.0	306.3	308.6	295.3	193.7	201.7	253.8	256.2	259.3	274.5
UNEMPLOYMENT	13.3	12.8	12.4	11.6	11.2	12.8	12.6	23.1	91.6	74.9	50.9	47.9	44.8	33.9
UNEMPLOYMENT RATE	4.2%	4.0%	3.9%	3.7%	3.5%	4.0%	3.9%	7.3%	32.1%	27.1%	16.7%	15.8%	14.7%	11.4%
Mesquite - Non-Seasonally Adjusted														
LABOR FORCE	8.0	8.0	8.0	8.0	8.0	8.1	8.1	7.9	6.8	6.8	7.0	7.1	7.1	7.6
EMPLOYMENT	7.7	7.7	7.7	7.8	7.7	7.8	7.8	7.5	4.9	5.1	6.4	6.5	6.6	7.0
UNEMPLOYMENT	0.3	0.3	0.2	0.2	0.2	0.3	0.2	0.4	1.9	1.6	0.6	0.6	0.5	0.6
UNEMPLOYMENT RATE	3.6%	3.4%	3.1%	2.9%	2.9%	3.4%	3.1%	4.6%	27.7%	24.2%	8.6%	8.0%	7.5%	8.3%
North Las Vegas - Non-Seasonally Adjusted														
LABOR FORCE	115.6	115.7	115.8	115.9	115.5	116.7	117.4	117.0	105.1	102.8	112.4	111.9	111.7	113.2
EMPLOYMENT	110.6	110.8	111.1	111.3	111.1	111.6	112.4	107.6	70.6	73.5	92.5	93.3	94.5	100.0
UNEMPLOYMENT	5.0	4.9	4.7	4.6	4.4	5.1	5.0	9.4	34.6	29.3	20.0	18.5	17.2	13.2
UNEMPLOYMENT RATE	4.4%	4.3%	4.1%	4.0%	3.8%	4.4%	4.3%	8.0%	32.9%	28.5%	17.7%	16.6%	15.4%	12.0%

Note: Unemployment rates are based on unrounded data.
Employment adjusted by census relationships to reflect number of persons by place of residence.
Information compiled by DETR's Research & Analysis Bureau

Seasonally Adjusted Establishment Based Industrial Employment

Statewide (Estimates in Thousands)

	Aug-20	Aug-19	+/- change	% change	Jul-20
Total nonfarm	1,289.8	1,423.4	-133.6	-9.4%	1,283.3
Mining and logging	16.0	14.7	1.3	8.8%	15.9
Construction	91.6	96.6	-5.0	-5.2%	94.2
Manufacturing	57.2	59.6	-2.4	-4.0%	58.7
Durable goods	37.4	40.2	-2.8	-7.0%	39.4
Nondurable goods	19.8	19.4	0.4	2.1%	19.3
Trade, transportation, and utilities	237.8	262.3	-24.5	-9.3%	233.3
Wholesale Trade	30.9	38.6	-7.7	-19.9%	32.8
Retail trade	139.3	148.2	-8.9	-6.0%	133.6
Transportation, Warehousing, and Utilities	67.6	75.5	-7.9	-10.5%	66.9
Information	13.5	15.8	-2.3	-14.6%	13.7
Financial activities	69.4	69.2	0.2	0.3%	68.4
Finance and insurance	39.3	39.1	0.2	0.5%	38.7
Real estate and rental and leasing	30.1	30.1	0.0	0.0%	29.7
Professional and business services	170.7	195.9	-25.2	-12.9%	170.1
Professional and technical services	60.2	62.0	-1.8	-2.9%	61.0
Management of companies and enterprises	19.4	27.4	-8.0	-29.2%	19.6
Administrative and waste services	91.1	106.5	-15.4	-14.5%	89.5
Education and health services	137.9	145.1	-7.2	-5.0%	135.9
Educational services	12.0	13.2	-1.2	-9.1%	11.2
Health care and social assistance	125.9	131.9	-6.0	-4.5%	124.7
Leisure and hospitality	299.3	355.8	-56.5	-15.9%	301.4
Arts, entertainment, and recreation	33.0	34.3	-1.3	-3.8%	32.6
Other services	37.3	41.8	-4.5	-10.8%	34.8
Government	159.1	166.6	-7.5	-4.5%	156.9
Federal	22.9	19.7	3.2	16.2%	20.6
State government	44.2	41.4	2.8	6.8%	44.2
Local government	92.0	105.5	-13.5	-12.8%	92.1

UNEMPLOYMENT RATES BASED ON UNROUNDED DATA

Employment adjusted by census relationships to reflect number of persons by place of residence.

Information compiled by DETR's Research & Analysis Bureau

Seasonally Adjusted Establishment Based Industrial Employment

Statewide Last 13 Months (Estimates in Thousands)

	Aug-19	Sep-19	Oct-19	Nov-19	Dec-19	Jan-20	Feb-20	Mar-20	Apr-20	May-20	Jun-20	Jul-20	Aug-20	12m Avg.
Total nonfarm	1,423.4	1,424.5	1,422.5	1,427.3	1,425.2	1,429.6	1,426.3	1,404.6	1,139.0	1,167.5	1,266.3	1,283.3	1,289.8	1,342.2
Mining and logging	14.7	14.7	14.8	14.5	14.2	14.0	14.3	14.5	14.2	15.3	15.3	15.9	16.0	14.8
Construction	96.6	97.4	97.7	99.6	97.9	98.0	99.4	103.3	94.7	98.6	95.6	94.2	91.6	97.3
Manufacturing	59.6	59.4	59.2	59.0	59.3	59.1	59.3	58.9	57.3	56.8	56.9	58.7	57.2	58.4
Durable goods	40.2	40.1	39.8	39.6	39.8	39.6	39.6	39.1	37.9	37.4	37.7	39.4	37.4	39.0
Nondurable goods	19.4	19.3	19.4	19.4	19.5	19.5	19.7	19.8	19.4	19.4	19.2	19.3	19.8	19.5
Trade, transportation, and utilities	262.3	262.4	263.2	262.0	260.8	259.4	258.6	254.6	213.9	219.0	231.6	233.3	237.8	246.4
Wholesale Trade	38.6	38.7	38.0	37.5	36.7	36.2	36.4	36.0	30.1	32.0	32.7	32.8	30.9	34.8
Retail trade	148.2	148.0	148.8	148.3	147.7	147.5	146.6	143.8	118.7	119.8	131.9	133.6	139.3	139.5
Transportation, Warehousing, and Utilities	75.5	75.7	76.4	76.2	76.4	75.7	75.6	74.8	65.1	67.2	67.0	66.9	67.6	72.0
Information	15.8	16.0	15.7	15.8	15.8	15.7	15.7	15.6	14.1	14.1	13.8	13.7	13.5	15.0
Financial activities	69.2	69.3	69.8	70.2	70.5	70.2	69.7	68.4	66.3	67.3	67.5	68.4	69.4	68.9
Finance and insurance	39.1	39.2	39.7	39.8	40.1	39.9	39.6	39.0	38.6	38.4	38.5	38.7	39.3	39.2
Real estate and rental and leasing	30.1	30.1	30.1	30.4	30.4	30.3	30.1	29.4	27.7	28.9	29.0	29.7	30.1	29.7
Professional and business services	195.9	196.8	196.3	199.4	199.1	204.5	200.0	197.8	157.9	155.5	164.6	170.1	170.7	184.4
Professional and technical services	62.0	61.8	62.6	63.3	63.3	64.5	63.4	63.4	60.9	58.8	59.7	61.0	60.2	61.9
Management of companies and enterprises	27.4	27.5	27.4	27.4	27.4	27.2	27.0	27.3	18.9	17.9	18.7	19.6	19.4	23.8
Administrative and waste services	106.5	107.5	106.3	108.7	108.4	112.8	109.6	107.1	78.1	78.8	86.2	89.5	91.1	98.7
Education and health services	145.1	144.8	144.0	144.8	144.1	145.9	146.4	145.0	128.5	129.0	132.8	135.9	137.9	139.9
Educational services	13.2	13.1	13.6	13.6	13.7	13.9	13.8	13.4	11.8	11.7	10.7	11.2	12.0	12.7
Health care and social assistance	131.9	131.7	130.4	131.2	130.4	132.0	132.6	131.6	116.7	117.3	122.1	124.7	125.9	127.2
Leisure and hospitality	355.8	356.1	353.7	353.7	355.4	355.4	354.4	338.5	203.6	221.1	297.6	301.4	299.3	315.8
Arts, entertainment, and recreation	34.3	34.7	34.8	35.0	35.2	35.3	35.3	32.9	27.5	31.0	34.2	32.6	33.0	33.5
Accommodation and food services	321.5	321.4	318.9	318.7	320.2	320.1	319.1	305.6	176.1	190.1	263.4	268.8	266.3	282.4
Other services	41.8	41.6	41.3	41.4	41.2	41.5	41.7	40.9	30.8	33.2	36.0	34.8	37.3	38.5
Government	166.6	166.0	166.8	166.9	166.9	165.9	166.8	167.1	157.7	157.6	154.6	156.9	159.1	162.7
Federal	19.7	19.7	19.7	20.0	19.7	19.9	20.1	20.2	20.2	20.3	20.3	20.6	22.9	20.3
State government	41.4	41.8	41.3	41.2	41.0	40.8	40.8	40.7	40.7	40.8	43.6	44.2	44.2	41.8
Local government	105.5	104.5	105.8	105.7	106.2	105.2	105.9	106.2	96.8	96.5	90.7	92.1	92.0	100.6

UNEMPLOYMENT RATES BASED ON UNROUNDED DATA

Employment adjusted by census relationships to reflect number of persons by place of residence.

Information compiled by DETR's Research & Analysis Bureau

Non-Seasonally Adjusted Establishment Based Industrial Employment

Statewide (Estimates in Thousands)

	Aug-20	Aug-19	+/- change	% change	Jul-20
Total nonfarm	1,289.0	1,421.1	-132.1	-9.30%	1,278.1
Goods-producing	167.0	172.8	-5.8	-3.36%	171.2
Mining and logging	16.3	14.9	1.4	9.40%	16.2
Metal ore mining	12.5	11.1	1.4	12.61%	12.5
Construction	93.2	98.3	-5.1	-5.19%	95.9
Construction of buildings	17.2	18.3	-1.1	-6.01%	17.3
Specialty trade contractors	67.5	71.2	-3.7	-5.20%	69.7
Manufacturing	57.5	59.6	-2.1	-3.52%	59.1
Durable goods	37.7	40.2	-2.5	-6.22%	39.8
Nondurable goods	19.8	19.4	0.4	2.06%	19.3
Service-providing	1,122.0	1,248.3	-126.3	-10.12%	1,106.9
Private service-providing	970.5	1,088.9	-118.4	-10.87%	959.2
Trade, transportation, and utilities	236.9	261.5	-24.6	-9.41%	232.2
Wholesale Trade	31.0	38.7	-7.7	-19.90%	32.9
Retail trade	138.9	147.5	-8.6	-5.83%	133.1
Food and beverage stores	24.3	24.9	-0.6	-2.41%	24.1
Health and personal care stores	8.3	9.0	-0.7	-7.78%	8.3
Transportation, Warehousing, and Utilities	67.0	75.3	-8.3	-11.02%	66.2
Utilities	4.1	4.1	0.0	0.00%	4.1
Transportation and Warehousing	62.9	71.2	-8.3	-11.66%	62.1
Transit and ground passenger transportation	6.5	10.5	-4.0	-38.10%	6.6
Taxi and limousine service	3.3	6.0	-2.7	-45.00%	3.3
Information	13.5	15.6	-2.1	-13.46%	13.6
Telecommunications	3.5	4.0	-0.5	-12.50%	3.6
Financial activities	69.4	69.4	0.0	0.00%	68.1
Finance and insurance	39.3	39.1	0.2	0.51%	38.6
Credit intermediation and related activities	20.6	20.3	0.3	1.48%	20.3
Real estate and rental and leasing	30.1	30.3	-0.2	-0.66%	29.5
Professional and business services	171.6	196.5	-24.9	-12.67%	168.9
Professional and technical services	60.2	62.0	-1.8	-2.90%	60.9
Management of companies and enterprises	19.6	27.4	-7.8	-28.47%	19.5
Administrative and waste services	91.8	107.1	-15.3	-14.29%	88.5
Administrative and support services	88.9	102.9	-14.0	-13.61%	85.4
Employment services	19.6	24.0	-4.4	-18.33%	18.8
Education and health services	138.2	145.2	-7.0	-4.82%	135.6
Educational services	11.5	12.9	-1.4	-10.85%	10.6
Health care and social assistance	126.7	132.3	-5.6	-4.23%	125.0
Ambulatory health care services	57.8	58.9	-1.1	-1.87%	56.7
Hospitals	33.2	33.7	-0.5	-1.48%	33.2
Leisure and hospitality	303.3	358.3	-55.0	-15.35%	305.6
Arts, entertainment, and recreation	34.2	35.5	-1.3	-3.66%	34.0
Amusements, gambling, and recreation	24.6	26.8	-2.2	-8.21%	24.6
Accommodation and food services	269.1	322.8	-53.7	-16.64%	271.6
Accommodation	158.8	189.4	-30.6	-16.16%	161.0
Casino hotels	133.3	171.5	-38.2	-22.27%	134.9
Gambling industries	9.3	10.2	-0.9	-8.82%	9.3
Food services and drinking places	110.3	133.4	-23.1	-17.32%	110.6
Full-service restaurants	58.8	63.6	-4.8	-7.55%	59.4
Limited-service eating places	47.4	55.1	-7.7	-13.97%	46.4
Other services	37.6	42.4	-4.8	-11.32%	35.2
Government	151.5	159.4	-7.9	-4.96%	147.7
Federal	23.2	19.9	3.3	16.58%	20.7
State government	40.2	37.4	2.8	7.49%	40.4
State government education	20.3	17.5	2.8	16.00%	20.5
State government, excluding education	19.9	19.9	0.0	0.00%	19.9
Local government	88.1	102.1	-14.0	-13.71%	86.6
Local government education	42.4	53.0	-10.6	-20.00%	40.5
Local government, excluding education	45.7	49.1	-3.4	-6.92%	46.1

UNEMPLOYMENT RATES BASED ON UNROUNDED DATA
Employment adjusted by census relationships to reflect number of persons by place of residence.
Information compiled by DETR's Research & Analysis Bureau

Non-Seasonally Adjusted Establishment Based Industrial Employment

Statewide Last 13 Months (Estimates in Thousands)

	Aug-19	Sep-19	Oct-19	Nov-19	Dec-19	Jan-20	Feb-20	Mar-20	Apr-20	May-20	Jun-20	Jul-20	Aug-20	12m Avg.
Total nonfarm	1,421.1	1,428.2	1,431.7	1,438.1	1,432.3	1,411.3	1,417.7	1,396.8	1,138.1	1,169.7	1,269.4	1,278.1	1,289.0	1,341.7
Goods-producing	172.8	172.7	173.9	173.8	171.9	168.5	169.8	174.3	164.9	169.8	169.5	171.2	167.0	170.6
Mining and logging	14.9	14.7	14.9	14.6	14.2	13.7	14.1	14.3	14.2	15.3	15.6	16.2	16.3	14.8
Metal ore mining	11.1	11.0	11.0	11.0	10.9	10.7	10.6	10.9	11.0	12.0	12.0	12.5	12.5	11.3
Construction	98.3	98.5	99.5	100.2	98.4	96.0	96.7	101.5	93.7	97.9	96.6	95.9	93.2	97.3
Construction of buildings	18.3	18.2	18.4	18.3	18.2	17.4	17.5	17.6	16.7	17.1	17.4	17.3	17.2	17.6
Specialty trade contractors	71.2	71.7	72.7	73.6	72.0	70.5	70.8	75.2	70.3	71.9	70.9	69.7	67.5	71.4
Manufacturing	59.6	59.5	59.5	59.0	59.3	58.8	59.0	58.5	57.0	56.6	57.3	59.1	57.5	58.4
Durable goods	40.2	40.1	40.0	39.5	39.8	39.3	39.4	38.8	37.7	37.2	38.1	39.8	37.7	39.0
Nondurable goods	19.4	19.4	19.5	19.5	19.5	19.5	19.6	19.7	19.3	19.4	19.2	19.3	19.8	19.5
Service-providing	1,248.3	1,255.5	1,257.8	1,264.3	1,260.4	1,242.8	1,247.9	1,222.5	973.2	999.9	1,099.9	1,106.9	1,122.0	1,171.1
Private service-providing	1,088.9	1,086.7	1,087.9	1,094.1	1,089.6	1,079.6	1,078.5	1,052.3	813.0	840.2	948.6	959.2	970.5	1,008.4
Trade, transportation, and utilities	261.5	261.6	264.1	270.2	270.0	258.3	256.6	250.9	211.1	217.0	230.4	232.2	236.9	246.6
Wholesale Trade	38.7	38.6	38.2	37.7	36.9	36.3	36.3	35.8	29.9	31.9	32.6	32.9	31.0	34.8
Retail trade	147.5	147.2	149.4	154.4	153.7	146.4	145.4	141.2	116.9	118.6	131.2	133.1	138.9	139.7
Food and beverage stores	24.9	24.8	24.9	25.1	25.1	24.7	24.8	24.7	23.3	23.4	24.1	24.1	24.3	24.4
Health and personal care stores	9.0	9.0	9.0	9.3	9.4	9.1	9.0	9.0	8.3	8.3	8.3	8.3	8.3	8.8
Transportation, Warehousing, and Utilities	75.3	75.8	76.5	78.1	79.4	75.6	74.9	73.9	64.3	66.5	66.6	66.2	67.0	72.1
Utilities	4.1	4.0	4.0	4.0	4.1	4.1	4.1	4.1	4.1	4.1	4.1	4.1	4.1	4.1
Transportation and Warehousing	71.2	71.8	72.5	74.1	75.3	71.5	70.8	69.8	60.2	62.4	62.5	62.1	62.9	68.0
Transit and ground passenger transportation	10.5	10.5	10.4	10.5	10.4	10.4	10.4	10.3	6.8	6.7	6.7	6.6	6.5	8.8
Taxi and limousine service	6.0	6.0	5.9	5.9	5.9	5.9	5.8	5.7	3.5	3.5	3.4	3.3	3.3	4.8
Information	15.6	15.5	15.7	16.0	15.8	15.4	15.6	15.4	14.1	14.2	14.1	13.6	13.5	14.9
Telecommunications	4.0	4.0	4.1	4.1	4.1	4.0	4.0	4.0	3.6	3.6	3.6	3.6	3.5	3.8
Financial activities	69.4	69.3	69.9	70.6	70.9	69.9	69.5	68.3	66.1	67.3	68.1	68.1	69.4	69.0
Finance and insurance	39.1	39.1	39.6	40.1	40.4	40.3	39.6	39.1	38.4	38.2	38.7	38.6	39.3	39.3
Credit intermediation and related activities	20.3	20.4	20.4	20.5	20.5	20.5	20.5	20.2	19.9	19.8	20.1	20.3	20.6	20.3
Real estate and rental and leasing	30.3	30.2	30.3	30.5	30.5	29.6	29.9	29.2	27.7	29.1	29.4	29.5	30.1	29.7
Professional and business services	196.5	196.5	198.5	201.2	197.8	203.7	199.6	196.1	157.7	155.4	164.6	168.9	171.6	184.3
Professional and technical services	62.0	61.5	63.1	64.1	63.8	64.0	63.6	63.4	61.4	58.8	59.3	60.9	60.2	62.0
Management of companies and enterprises	27.4	27.4	27.6	27.4	27.5	26.9	26.7	27.1	18.7	17.8	18.7	19.5	19.6	23.7
Administrative and waste services	107.1	107.6	107.8	109.7	106.5	112.8	109.3	105.6	77.6	78.8	86.6	88.5	91.8	98.5
Administrative and support services	102.9	103.4	103.6	104.7	101.2	107.7	104.1	100.5	74.3	75.7	83.6	85.4	88.9	94.4
Employment services	24.0	24.3	25.2	26.5	26.1	26.1	25.0	24.1	15.8	16.4	18.5	18.8	19.6	22.2
Education and health services	145.2	144.7	144.4	145.6	144.8	144.7	146.2	144.3	128.4	129.0	133.5	135.6	138.2	139.9
Educational services	12.9	13.3	13.9	13.9	13.9	13.9	14.1	13.7	12.1	11.8	10.6	10.6	11.5	12.8
Health care and social assistance	132.3	131.4	130.5	131.7	130.9	130.8	132.1	130.6	116.3	117.2	122.9	125.0	126.7	127.2
Ambulatory health care services	58.9	58.6	58.0	58.1	58.2	58.3	59.0	57.8	48.4	50.3	55.1	56.7	57.8	56.4
Hospitals	33.7	33.1	33.2	33.3	33.4	33.3	33.4	33.5	33.4	33.4	33.5	33.2	33.2	33.3
Leisure and hospitality	358.3	357.1	353.7	349.1	349.8	347.0	349.8	336.8	204.7	223.8	301.5	305.6	303.3	315.2
Arts, entertainment, and recreation	35.5	35.1	34.4	33.7	34.2	33.6	34.1	32.5	27.7	31.9	35.5	34.0	34.2	33.4
Amusements, gambling, and recreation	26.8	26.4	25.9	25.4	25.8	25.5	25.9	24.6	21.3	24.0	25.7	24.6	24.6	25.0
Accommodation and food services	322.8	322.0	319.3	315.4	315.6	313.4	315.7	304.3	177.0	191.9	266.0	271.6	269.1	281.8
Accommodation	189.4	188.9	187.9	185.0	184.7	183.4	182.8	177.6	120.3	119.6	160.4	161.0	158.8	167.5
Casino hotels	171.5	171.0	169.9	167.6	167.4	166.6	166.3	161.2	110.7	108.1	133.6	134.9	133.3	149.2
Gambling industries	10.2	10.3	10.2	10.2	10.3	10.2	10.2	9.7	7.0	7.7	9.3	9.3	9.3	9.5
Food services and drinking places	133.4	133.1	131.4	130.4	130.9	130.0	132.9	126.7	56.7	72.3	105.6	110.6	110.3	114.2
Full-service restaurants	63.6	63.7	63.1	63.0	62.4	62.7	64.1	60.6	17.7	29.3	55.1	59.4	58.8	55.0
Limited-service eating places	55.1	54.6	53.8	54.4	54.2	53.2	54.2	53.7	34.0	37.9	45.1	46.4	47.4	49.1
Other services	42.4	42.0	41.6	41.4	40.5	40.6	41.2	40.5	30.9	33.5	36.4	35.2	37.6	38.4
Government	159.4	168.8	169.9	170.2	170.8	163.2	169.4	170.2	160.2	159.7	151.3	147.7	151.5	162.7
Federal	19.9	19.9	19.8	20.0	19.9	19.8	19.8	19.9	20.0	20.3	20.5	20.7	23.2	20.3
State government	37.4	43.2	43.7	43.1	42.7	37.8	42.3	42.4	42.1	41.7	41.0	40.4	40.2	41.7
State government education	17.5	23.4	23.7	23.1	22.7	17.8	22.3	22.3	21.9	21.5	20.9	20.5	20.3	21.7
State government, excluding education	19.9	19.8	20.0	20.0	20.0	20.0	20.0	20.1	20.2	20.2	20.1	19.9	19.9	20.0
Local government	102.1	105.7	106.4	107.1	108.2	105.6	107.3	107.9	98.1	97.7	89.8	86.6	88.1	100.7
Local government education	53.0	57.1	58.1	58.8	59.8	57.0	58.6	59.3	53.5	53.1	44.1	40.5	42.4	53.5
Local government, excluding education	49.1	48.6	48.3	48.3	48.4	48.6	48.7	48.6	44.6	44.6	45.7	46.1	45.7	47.2

UNEMPLOYMENT RATES BASED ON UNROUNDED DATA
Employment adjusted by census relationships to reflect number of persons by place of residence.
Information compiled by DETR's Research & Analysis Bureau

Non-Seasonally Adjusted Establishment Based Industrial Employment

Las Vegas (Estimates in Thousands)

	Aug-20	Aug-19	+/- change	% change	Jul-20
Total nonfarm	908.5	1,034.8	-126.3	-12.21%	899.9
Total private	804.7	931.2	-126.5	-13.58%	797.3
Goods-producing	93.9	97.5	-3.6	-3.69%	97.1
Mining and logging	0.6	0.5	0.1	20.00%	0.6
Construction	68.8	71.1	-2.3	-3.23%	70.7
Construction of buildings	12.0	11.9	0.1	0.84%	11.9
Specialty trade contractors	54.6	53.5	1.1	2.06%	56.8
Building foundation and exterior contractors	14.0	15.1	-1.1	-7.28%	13.8
Building finishing contractors	12.9	13.1	-0.2	-1.53%	12.8
Manufacturing	24.5	25.9	-1.4	-5.41%	25.8
Durable goods	13.4	14.7	-1.3	-8.84%	14.6
Other miscellaneous durable goods manufacturing	4.1	4.2	-0.1	-2.38%	4.1
Nondurable goods	11.1	11.2	-0.1	-0.89%	11.2
Service-providing	814.6	937.3	-122.7	-13.09%	802.8
Private service-providing	710.8	833.7	-122.9	-14.74%	700.2
Trade, transportation, and utilities	167.3	184.3	-17.0	-9.22%	162.0
Wholesale Trade	20.5	24.6	-4.1	-16.67%	21.2
Retail trade	101.3	108.7	-7.4	-6.81%	96.0
Food and beverage stores	18.7	18.4	0.3	1.63%	18.6
Health and personal care stores	6.6	7.5	-0.9	-12.00%	6.6
Transportation, Warehousing, and Utilities	45.5	51.0	-5.5	-10.78%	44.8
Utilities	2.6	2.6	0.0	0.00%	2.6
Transportation and Warehousing	42.9	48.4	-5.5	-11.36%	42.2
Transit and ground passenger transportation	5.9	9.7	-3.8	-39.18%	6.0
Taxi and limousine service	3.2	5.9	-2.7	-45.76%	3.2
Information	9.4	11.4	-2.0	-17.54%	9.4
Telecommunications	2.4	3.0	-0.6	-20.00%	2.5
Financial activities	54.8	54.1	0.7	1.29%	54.1
Finance and insurance	30.8	30.3	0.5	1.65%	30.5
Credit intermediation and related activities	17.0	16.4	0.6	3.66%	16.7
Real estate and rental and leasing	24.0	23.8	0.2	0.84%	23.6
Professional and business services	130.4	151.8	-21.4	-14.10%	126.8
Professional and technical services	42.3	45.5	-3.2	-7.03%	43.1
Management of companies and enterprises	14.2	22.9	-8.7	-37.99%	14.2
Administrative and waste services	73.9	83.4	-9.5	-11.39%	69.5
Administrative and support services	71.3	80.5	-9.2	-11.43%	66.8
Employment services	11.2	15.7	-4.5	-28.66%	9.9
Other support services	12.7	10.3	2.4	23.30%	12.2
Education and health services	99.9	105.8	-5.9	-5.58%	96.0
Health care and social assistance	89.2	95.8	-6.6	-6.89%	87.7
Ambulatory health care services	41.3	44.0	-2.7	-6.14%	39.9
Hospitals	24.1	23.4	0.7	2.99%	24.0
Leisure and hospitality	221.4	294.0	-72.6	-24.69%	224.9
Arts, entertainment, and recreation	20.4	23.6	-3.2	-13.56%	20.5
Amusements, gambling, and recreation	14.4	16.9	-2.5	-14.79%	14.5
Accommodation and food services	201.0	270.4	-69.4	-25.67%	204.4
Accommodation	123.1	163.1	-40.0	-24.52%	125.1
Casino hotels	116.1	148.7	-32.6	-21.92%	118.0
Gambling industries	5.0	5.2	-0.2	-3.85%	5.0
Food services and drinking places	77.9	107.3	-29.4	-27.40%	79.3
Full-service restaurants	42.4	52.3	-9.9	-18.93%	44.5
Limited-service eating places	34.2	42.7	-8.5	-19.91%	33.4
Other services	27.6	32.3	-4.7	-14.55%	27.0
Government	103.8	103.6	0.2	0.19%	102.6
Federal	16.0	13.6	2.4	17.65%	14.1
State government	18.1	18.6	-0.5	-2.69%	18.3
Local government	69.7	71.4	-1.7	-2.38%	70.2

UNEMPLOYMENT RATES BASED ON UNROUNDED DATA
Employment adjusted by census relationships to reflect number of persons by place of residence.
Information compiled by DETR's Research & Analysis Bureau

Non-Seasonally Adjusted Establishment Based Industrial Employment

Las Vegas MSA Last 13 Months (Estimates in Thousands)

	Aug-19	Sep-19	Oct-19	Nov-19	Dec-19	Jan-20	Feb-20	Mar-20	Apr-20	May-20	Jun-20	Jul-20	Aug-20	12m Avg.
Total nonfarm	1,034.8	1,040.8	1,044.7	1,050.9	1,045.6	1,032.7	1,034.5	1,020.3	792.6	815.4	892.0	899.9	908.5	964.8
Total private	931.2	931.5	934.7	940.8	935.2	926.8	924.9	909.9	689.4	712.1	789.3	797.3	804.7	858.0
Goods-producing	97.5	97.7	99.1	100.2	100.2	99.5	100.0	103.1	95.1	97.4	97.7	97.1	93.9	98.4
Mining and logging	0.5	0.5	0.5	0.5	0.5	0.5	0.5	0.5	0.5	0.5	0.6	0.6	0.6	0.5
Construction	71.1	71.3	72.4	73.7	73.5	72.7	73.6	77.0	70.0	72.5	72.2	70.7	68.8	72.4
Construction of buildings	11.9	12.0	12.0	12.0	12.1	11.5	11.6	11.6	11.3	11.5	11.7	11.9	12.0	11.8
Specialty trade contractors	53.5	53.8	54.9	56.3	56.1	55.9	56.4	60.4	56.8	58.2	58.0	56.8	54.6	56.5
Building foundation and exterior contractors	15.1	14.6	14.8	15.0	14.9	14.6	14.7	15.8	14.1	14.0	13.9	13.8	14.0	14.5
Building finishing contractors	13.1	13.6	14.0	14.1	14.2	14.2	14.3	15.3	12.6	12.8	12.9	12.8	12.9	13.6
Manufacturing	25.9	25.9	26.2	26.0	26.2	26.3	25.9	25.6	24.6	24.4	24.9	25.8	24.5	25.5
Durable goods	14.7	14.7	14.8	14.6	14.8	14.7	14.5	14.3	13.5	13.3	13.8	14.6	13.4	14.2
Other miscellaneous durable goods manufacturing	4.2	4.2	4.2	4.1	4.1	4.1	4.1	4.0	3.9	4.0	4.1	4.1	4.1	4.1
Nondurable goods	11.2	11.2	11.4	11.4	11.4	11.6	11.4	11.3	11.1	11.1	11.1	11.2	11.1	11.3
Service-providing	937.3	943.1	945.6	950.7	945.4	933.2	934.5	917.2	697.5	718.0	794.3	802.8	814.6	866.4
Private service-providing	833.7	833.8	835.6	840.6	835.0	827.3	824.9	806.8	594.3	614.7	691.6	700.2	710.8	759.6
Trade, transportation, and utilities	184.3	184.7	185.9	190.8	190.5	182.7	181.1	177.5	147.8	149.7	160.6	162.0	167.3	173.4
Wholesale Trade	24.6	24.6	24.8	24.8	24.9	24.6	24.7	24.7	19.9	21.2	21.4	21.2	20.5	23.1
Retail trade	108.7	108.6	109.2	113.2	112.4	107.2	105.8	102.0	84.7	84.0	94.1	96.0	101.3	101.5
Food and beverage stores	18.4	18.4	18.5	18.6	18.7	18.4	18.5	18.3	17.7	17.8	18.5	18.6	18.7	18.4
Health and personal care stores	7.5	7.5	7.5	7.8	7.8	7.5	7.5	7.5	6.6	6.6	6.6	6.6	6.6	7.2
Transportation, Warehousing, and Utilities	51.0	51.5	51.9	52.8	53.2	50.9	50.6	50.8	43.2	44.5	45.1	44.8	45.5	48.7
Utilities	2.6	2.6	2.6	2.6	2.6	2.7	2.6	2.7	2.6	2.6	2.6	2.6	2.6	2.6
Transportation and Warehousing	48.4	48.9	49.3	50.2	50.6	48.2	48.0	48.1	40.6	41.9	42.5	42.2	42.9	46.1
Transit and ground passenger transportation	9.7	9.6	9.6	9.7	9.5	9.8	9.7	9.7	6.1	6.1	6.1	6.0	5.9	8.2
Taxi and limousine service	5.9	5.9	5.8	5.8	5.6	5.8	5.7	5.6	3.4	3.3	3.3	3.2	3.2	4.7
Information	11.4	11.2	11.4	11.6	11.4	11.3	11.5	11.3	9.7	9.8	9.6	9.4	9.4	10.6
Telecommunications	3.0	3.0	3.0	3.0	3.0	3.0	3.0	3.0	2.5	2.5	2.5	2.5	2.4	2.8
Financial activities	54.1	54.2	54.7	54.9	55.2	53.8	53.4	53.4	52.1	53.4	54.0	54.1	54.8	54.0
Finance and insurance	30.3	30.4	30.8	31.1	31.4	30.9	30.4	30.7	30.0	30.2	30.5	30.5	30.8	30.6
Credit intermediation and related activities	16.4	16.5	16.6	16.6	16.8	16.5	16.4	16.4	16.2	16.3	16.5	16.7	17.0	16.5
Real estate and rental and leasing	23.8	23.8	23.9	23.8	23.8	22.9	23.0	22.7	22.1	23.2	23.5	23.6	24.0	23.4
Professional and business services	151.8	152.0	153.0	153.5	149.9	153.5	150.4	150.3	117.0	115.4	123.7	126.8	130.4	139.7
Professional and technical services	45.5	45.1	46.2	46.3	45.6	45.2	45.2	45.2	43.3	41.3	41.7	43.1	42.3	44.2
Management of companies and enterprises	22.9	23.0	23.0	22.8	22.5	21.9	21.7	22.2	13.6	12.6	13.5	14.2	14.2	18.8
Administrative and waste services	83.4	83.9	83.8	84.4	81.8	86.4	83.5	82.9	60.1	61.5	68.5	69.5	73.9	76.7
Administrative and support services	80.5	81.0	80.7	81.2	78.7	83.8	80.7	80.1	57.6	59.0	65.9	66.8	71.3	73.9
Employment services	15.7	15.9	16.5	16.9	16.3	16.5	16.1	15.7	7.4	7.8	9.8	9.9	11.2	13.3
Other support services	10.3	10.5	11.4	10.7	10.4	15.0	13.1	12.6	11.6	12.5	13.1	12.2	12.7	12.2
Education and health services	105.8	105.7	105.3	106.2	105.7	105.5	106.2	103.7	90.7	90.0	94.9	96.0	99.9	100.8
Health care and social assistance	95.8	95.4	94.7	95.6	94.9	94.7	95.7	94.1	81.4	81.3	86.4	87.7	89.2	90.9
Ambulatory health care services	44.0	43.9	43.8	44.0	44.0	43.7	44.4	43.7	33.7	34.4	39.3	39.9	41.3	41.3
Hospitals	23.4	23.2	23.3	23.4	23.5	23.5	23.6	23.7	23.7	23.8	23.9	24.0	24.1	23.6
Leisure and hospitality	294.0	294.0	293.1	291.8	290.7	288.9	290.5	278.6	154.3	171.6	221.7	224.9	221.4	251.8
Arts, entertainment, and recreation	23.6	23.9	23.7	23.7	23.7	23.4	23.6	21.9	16.5	20.7	22.8	20.5	20.4	22.1
Amusements, gambling, and recreation	16.9	16.6	16.5	16.5	16.5	16.3	16.4	15.6	13.0	14.5	16.4	14.5	14.4	15.6
Accommodation and food services	270.4	270.1	269.4	268.1	267.0	265.5	266.9	256.7	137.8	150.9	198.9	204.4	201.0	229.7
Accommodation	163.1	163.2	163.0	161.7	160.6	159.6	159.7	155.8	96.9	97.5	123.7	125.1	123.1	140.8
Casino hotels	148.7	148.8	148.6	147.5	146.6	145.8	145.8	142.0	94.6	94.1	116.8	118.0	116.1	130.4
Food services and drinking places	107.3	106.9	106.4	106.4	106.4	105.9	107.2	100.9	40.9	53.4	75.2	79.3	77.9	88.9
Restaurants and other eating places	95.0	94.5	94.4	95.3	94.9	93.7	94.7	90.7	39.3	52.3	72.8	77.9	76.6	81.4
Full-service restaurants	52.3	52.4	52.7	52.9	52.8	52.6	52.9	49.5	14.6	24.2	40.5	44.5	42.4	44.3
Limited-service eating places	42.7	42.1	41.7	42.4	42.1	41.1	41.8	41.2	24.7	28.1	32.3	33.4	34.2	37.1
Other services	32.3	32.0	32.2	31.8	31.6	31.6	31.8	32.0	22.7	24.8	27.1	27.0	27.6	29.4
Government	103.6	109.3	110.0	110.1	110.4	105.9	109.6	110.4	103.2	103.3	102.7	102.6	103.8	106.8
Federal	13.6	13.6	13.7	13.9	13.8	13.8	13.7	13.7	13.8	13.9	13.9	14.1	16.0	14.0
State government	18.6	21.9	22.1	21.6	21.2	18.6	21.0	21.0	20.7	20.4	18.6	18.3	18.1	20.3
Local government	71.4	73.8	74.2	74.6	75.4	73.5	74.9	75.7	68.7	69.0	70.2	70.2	69.7	72.5

UNEMPLOYMENT RATES BASED ON UNROUNDED DATA
Employment adjusted by census relationships to reflect number of persons by place of residence.
Information compiled by DETR's Research & Analysis Bureau

Non-Seasonally Adjusted Establishment Based Industrial Employment

Reno MSA (Estimates in Thousands)

	Aug-20	Aug-19	+/- change	% change	Jul-20
Total nonfarm	233.0	247.5	-14.5	-5.86%	230.3
Total private	205.1	220.0	-14.9	-6.77%	203.3
Goods-producing	44.3	44.6	-0.3	-0.67%	44.2
Mining and logging	0.3	0.3	0.0	0.00%	0.3
Construction	18.3	18.8	-0.5	-2.66%	18.3
Manufacturing	25.7	25.5	0.2	0.78%	25.6
Service-providing	188.7	202.9	-14.2	-7.00%	186.1
Private service-providing	160.8	175.4	-14.6	-8.32%	159.1
Trade, transportation, and utilities	49.7	54.3	-4.6	-8.47%	49.3
Wholesale Trade	8.7	10.1	-1.4	-13.86%	8.8
Retail trade	24.4	24.5	-0.1	-0.41%	24.2
Food and beverage stores	3.8	3.8	0.0	0.00%	3.9
Transportation, Warehousing, and Utilities	16.6	19.7	-3.1	-15.74%	16.3
Information	3.0	3.0	0.0	0.00%	3.0
Financial activities	11.1	11.1	0.0	0.00%	10.9
Finance and insurance	6.1	6.2	-0.1	-1.61%	6.0
Professional and business services	29.8	32.0	-2.2	-6.88%	29.9
Administrative and waste services	14.4	17.4	-3.0	-17.24%	14.0
Education and health services	26.4	27.9	-1.5	-5.38%	25.7
Leisure and hospitality	34.8	40.5	-5.7	-14.07%	34.8
Accommodation and food services	28.0	33.5	-5.5	-16.42%	28.3
Accommodation	13.9	15.9	-2.0	-12.58%	14.3
Casino hotels	12.2	14.5	-2.3	-15.86%	12.6
Food services and drinking places	14.1	17.6	-3.5	-19.89%	14.0
Other services	6.0	6.6	-0.6	-9.09%	5.5
Government	27.9	27.5	0.4	1.45%	27.0
Federal	4.2	3.8	0.4	10.53%	3.9
State government	10.1	9.5	0.6	6.32%	10.1
Local government	13.6	14.2	-0.6	-4.23%	13.0

UNEMPLOYMENT RATES BASED ON UNROUNDED DATA
Employment adjusted by census relationships to reflect number of persons by place of residence.
Information compiled by DETR's Research & Analysis Bureau

Non-Seasonally Adjusted Establishment Based Industrial Employment

Reno MSA Last 13 Months (Estimates in Thousands)

	Aug-19	Sep-19	Oct-19	Nov-19	Dec-19	Jan-20	Feb-20	Mar-20	Apr-20	May-20	Jun-20	Jul-20	Aug-20	12m Avg.
Total nonfarm	247.5	250.0	251.7	254.0	253.2	245.8	248.1	247.4	212.1	219.2	229.7	230.3	233.0	239.5
Total private	220.0	218.6	220.3	222.3	221.4	216.2	216.5	215.7	182.2	189.4	202.0	203.3	205.1	209.4
Goods-producing	44.6	44.6	44.6	43.8	43.6	42.6	42.9	43.7	43.2	44.7	44.4	44.2	44.3	43.9
Mining and logging	0.3	0.3	0.3	0.3	0.3	0.3	0.3	0.3	0.3	0.3	0.3	0.3	0.3	0.3
Construction	18.8	18.8	18.8	18.3	17.8	16.9	17.1	17.8	17.5	18.6	18.7	18.3	18.3	18.1
Manufacturing	25.5	25.5	25.5	25.2	25.5	25.4	25.5	25.6	25.4	25.8	25.4	25.6	25.7	25.5
Miscellaneous durable goods manufacturing	2.3	2.3	2.3	2.2	2.2	2.2	2.2	2.2	2.2	2.1	2.1	2.1	2.1	2.2
Service-providing	202.9	205.4	207.1	210.2	209.6	203.2	205.2	203.7	168.9	174.5	185.3	186.1	188.7	195.7
Private service-providing	175.4	174.0	175.7	178.5	177.8	173.6	173.6	172.0	139.0	144.7	157.6	159.1	160.8	165.5
Trade, transportation, and utilities	54.3	54.3	55.5	56.6	57.0	53.9	53.7	53.5	45.3	47.8	49.2	49.3	49.7	52.2
Wholesale Trade	10.1	10.0	10.0	9.9	9.9	9.8	9.8	9.8	8.7	8.7	8.8	8.8	8.7	9.4
Retail trade	24.5	24.4	25.4	26.2	26.4	24.8	24.6	24.4	20.4	22.6	23.9	24.2	24.4	24.3
Transportation, Warehousing, and Utilities	19.7	19.9	20.1	20.5	20.7	19.3	19.3	19.3	16.2	16.5	16.5	16.3	16.6	18.4
Information	3.0	3.0	3.0	3.0	3.1	3.0	3.0	3.0	3.0	3.0	3.0	3.0	3.0	3.0
Financial activities	11.1	10.9	11.0	10.9	11.0	10.9	10.9	10.9	10.8	10.8	10.9	10.9	11.1	10.9
Finance and insurance	6.2	6.0	6.1	6.1	6.1	6.1	6.1	6.1	6.1	6.0	6.0	6.0	6.1	6.1
Professional and business services	32.0	31.9	33.0	35.3	34.1	33.8	33.2	32.1	27.3	28.5	29.5	29.9	29.8	31.5
Administrative and waste services	17.4	17.4	17.7	18.3	17.7	16.7	16.4	16.2	12.7	13.1	13.7	14.0	14.4	15.7
Education and health services	27.9	27.6	27.8	27.9	27.9	28.0	28.2	28.1	25.7	25.6	25.5	25.7	26.4	27.0
Leisure and hospitality	40.5	39.8	38.9	38.4	38.4	37.7	38.3	38.0	22.4	23.6	33.9	34.8	34.8	34.9
Accommodation and food services	33.5	33.3	33.1	32.7	32.4	32.0	32.5	32.4	19.9	21.3	27.4	28.3	28.0	29.4
Accommodation	15.9	15.6	15.5	15.3	15.0	15.0	15.0	14.9	11.8	11.7	14.1	14.3	13.9	14.3
Casino hotels	14.5	14.1	14.0	13.8	13.6	13.6	13.6	13.5	10.7	10.6	12.4	12.6	12.2	12.9
Food services and drinking places	17.6	17.7	17.6	17.4	17.4	17.0	17.5	17.5	8.1	9.6	13.3	14.0	14.1	15.1
Other services	6.6	6.5	6.5	6.4	6.3	6.3	6.3	6.4	4.5	5.4	5.6	5.5	6.0	6.0
Government	27.5	31.4	31.4	31.7	31.8	29.6	31.6	31.7	29.9	29.8	27.7	27.0	27.9	30.1
Federal	3.8	3.8	3.8	3.8	3.8	3.8	3.8	3.9	3.9	3.9	3.9	3.9	4.2	3.9
State government	9.5	11.8	11.6	11.6	11.6	9.9	11.6	11.6	11.4	11.3	10.1	10.1	10.1	11.1
Local government	14.2	15.8	16.0	16.3	16.4	15.9	16.2	16.2	14.6	14.6	13.7	13.0	13.6	15.2

UNEMPLOYMENT RATES BASED ON UNROUNDED DATA
Employment adjusted by census relationships to reflect number of persons by place of residence.
Information compiled by DETR's Research & Analysis Bureau

Non-Seasonally Adjusted Establishment Based Industrial Employment

Carson City MSA (Estimates in Thousands)

	Aug-20	Aug-19	+/- change	% change	Jul-20
Total nonfarm	29.6	31.0	-1.4	-4.52%	29.4
Total private	20.1	21.6	-1.5	-6.94%	19.8
Goods-producing	4.2	4.4	-0.2	-4.55%	4.2
Manufacturing	2.7	2.7	0.0	0.00%	2.7
Service-providing	25.4	26.6	-1.2	-4.51%	25.2
Private service-providing	15.9	17.2	-1.3	-7.56%	15.6
Trade, transportation, and utilities	3.9	4.2	-0.3	-7.14%	3.7
Retail trade	3.0	3.3	-0.3	-9.09%	2.9
Professional and business services	1.9	2.3	-0.4	-17.39%	1.9
Leisure and hospitality	4.3	3.8	0.5	13.16%	4.3
Government	9.5	9.4	0.1	1.06%	9.6
Federal	0.7	0.6	0.1	16.67%	0.6
State government	7.0	6.8	0.2	2.94%	7.0
Local government	1.8	2.0	-0.2	-10.00%	2.0

UNEMPLOYMENT RATES BASED ON UNROUNDED DATA

Employment adjusted by census relationships to reflect number of persons by place of residence.

Information compiled by DETR's Research & Analysis Bureau

Non-Seasonally Adjusted Establishment Based Industrial Employment

Carson City MSA Last 13 Months (Estimates in Thousands)

	Aug-19	Sep-19	Oct-19	Nov-19	Dec-19	Jan-20	Feb-20	Mar-20	Apr-20	May-20	Jun-20	Jul-20	Aug-20	12m Avg.
Total nonfarm	31.0	30.9	31.1	31.2	30.9	30.6	30.7	30.6	27.0	27.6	28.5	29.4	29.6	29.8
Total private	21.6	21.4	21.5	21.5	21.4	21.2	21.3	21.1	17.6	18.1	18.9	19.8	20.1	20.3
Goods-producing	4.4	4.3	4.3	4.3	4.2	4.2	4.2	4.2	3.8	4.0	4.2	4.2	4.2	4.2
Manufacturing	2.7	2.7	2.7	2.7	2.7	2.6	2.6	2.7	2.5	2.5	2.6	2.7	2.7	2.6
Service-providing	26.6	26.6	26.8	26.9	26.7	26.4	26.5	26.4	23.2	23.6	24.3	25.2	25.4	25.7
Private service-providing	17.2	17.1	17.2	17.2	17.2	17.0	17.1	16.9	13.8	14.1	14.7	15.6	15.9	16.1
Trade, transportation, and utilities	4.2	4.2	4.3	4.4	4.4	4.2	4.2	4.1	3.6	3.7	3.7	3.7	3.9	4.0
Retail trade	3.3	3.3	3.4	3.4	3.4	3.3	3.3	3.2	2.7	2.7	2.9	2.9	3.0	3.1
Professional and business services	2.3	2.2	2.2	2.3	2.3	2.2	2.2	2.2	1.8	1.8	1.8	1.9	1.9	2.1
Leisure and hospitality	3.8	3.7	3.7	3.7	3.7	3.6	3.6	3.5	2.9	3.1	4.2	4.3	4.3	3.7
Government	9.4	9.5	9.6	9.7	9.5	9.4	9.4	9.5	9.4	9.5	9.6	9.6	9.5	9.5
Federal	0.6	0.6	0.6	0.6	0.5	0.5	0.5	0.5	0.6	0.6	0.6	0.6	0.7	0.6
State government	6.8	6.9	7.0	7.0	7.0	6.9	6.9	7.0	7.0	7.1	7.1	7.0	7.0	7.0
Local government	2.0	2.0	2.0	2.1	2.0	2.0	2.0	2.0	1.8	1.8	1.9	2.0	1.8	2.0

UNEMPLOYMENT RATES BASED ON UNROUNDED DATA
Employment adjusted by census relationships to reflect number of persons by place of residence.
Information compiled by DETR's Research & Analysis Bureau