

**MEDIA CONTACT**  
Rosa Mendez  
[detrmedia@detr.nv.gov](mailto:detrmedia@detr.nv.gov)

**PRESS RELEASE**



**STEVE SISOLAK**  
Governor

**ELISA CAFFERATA**  
Acting Director

**DAVID SCHMIDT**  
Chief Economist

**RESEARCH AND ANALYSIS BUREAU**  
**UNEMPLOYMENT INSURANCE CLAIMS PRESS RELEASE**

For Immediate Release  
August 21, 2020

## **Regular UI Continued Claims Fall by 95k to Lowest Levels Since Mid-April; PUA Claims Activity Declines**

**CARSON CITY, NV** - Finalized data from the Nevada Department of Employment, Training and Rehabilitation (DETR) show initial claims for unemployment insurance (UI) totaled 10,938 for the week ending August 15, down 6,817 claims, compared to last week's total of 17,755 claims. Through the week ending August 15, there have been 653,510 initial claims filed in 2020, 631,858 of which have been filed since the week ending March 14.

Continued claims, which represent the current number of insured unemployed workers filing weekly for unemployment insurance benefits, fell significantly to 240,346, a decrease from the previous week of 95,622 claims, or 28.5 percent. This is the fewest continued claims since the report week ending April 18 when there were 231,618 claims filed.

Nevada's insured unemployment rate, which is the ratio of continued claims in a week to the total number of jobs covered by the unemployment insurance system (also known as covered employment), fell by 6.9 percentage points to 17.3 percent. It should be noted that the calculation of the insured unemployment rate is different from that of the state's total unemployment rate.

The Pandemic Unemployment Assistance (PUA) program for the self-employed, 1099 contract workers, and gig workers saw 12,356 initial claims filed in the week ending August 15, a decrease of 250, or 2.0 percent, from last week's total of 12,606. This is the fewest PUA initial claims filed in a week since the start of the program. Through the week ending August 15, 410,065 PUA initial claims have been filed.

PUA continued claims totaled 109,617 in the week ending August 15, a decline of 18,109 from the previous week's revised total of 127,726. Weekly PUA continued claims are now reported by the benefit week claimed. This follows the reporting procedure for regular continued claims and allows us to understand the number of unemployed workers filing weekly for PUA benefits.

Nevada's Pandemic Emergency Unemployment Compensation (PEUC) program, which provides up to 13 weeks of benefits to individuals who have exhausted their regular unemployment benefits, saw 19,798 claims filed in the week, an increase of 1,780 claims from a week ago.

Nevada's State Extended Benefit (SEB) program, which provides up to 20 weeks of benefits to individuals who have exhausted both their regular unemployment benefits and PEUC program benefits, saw 1,477 claims filed in the week, an increase of 373 claims from a week ago.

Nationally, the advance figure for seasonally adjusted regular initial claims was 1,106,000 an increase of 135,000 claims from the previous week's revised level of 971,000. The national insured unemployment rate for the week ending August 8 was 10.2 percent, a decrease of 0.4 percentage points from the previous week's revised rate. The national rate is reported with a one-week lag.

State level data from the U.S. Department of Labor can be found here [[DOL Weekly Claims Report](#)]. Please note that state data from the U.S. Department of Labor tends to be released more slowly than national data. View the state level unemployment insurance claims report for the week ending August 15 here [[Weekly Report](#)]. A dashboard for Nevada weekly claims can be viewed here [[Weekly Dashboard](#)]. A page for Nevada weekly claims characteristics by program can be viewed here [[Weekly Claims Characteristics](#)]. A monthly claims dashboard can be found here [[Monthly Dashboard](#)] and a monthly claims demographic page can be found here [[Monthly Demographics](#)]. View weekly county claims trends here [[Weekly by County](#)]. Dashboards are interactive reports that allow you to dig deeper into the data.

To file for unemployment in the State of Nevada, please use the online application available 24/7 at <http://ui.nv.gov/css.html>. People unable to file online may file via telephone by calling a UI Claims Call Center between 8 a.m. and 8 p.m., Monday through Friday and Saturday between 8 a.m. and noon. Northern UI Call Center: (775) 684-0350; Southern UI Call Center: (702) 486-0350; Rural areas and Out-of-State: (888) 890-8211. Claimants are highly encouraged to use the internet to file their UI claims, as it is the fastest and most convenient way to file and reserves the phone lines for individuals who are not able or do not have the necessary resources to file online. Online filing during non-peak hours, such as early mornings, at night or weekends is also highly recommended. To continue to receive benefits, claimants must file weekly.

DETR is aware of the unemployment fraud that is plaguing the state and is actively working with law enforcement entities and the Department of Labor to detect, prevent and address unemployment fraud. Employers and individuals who believe they have been a victim of unemployment fraud, can file a report with the agency by visiting [www.detr.nv.gov](http://www.detr.nv.gov) and selecting the [Fraud Reporting Form](#) on the left under "Quick links." Once a report is filed with the Department of Employment, Training and Rehabilitation (DETR), nothing else is required by the reporting party. DETR will flag the account so payments are not issued. If needed, the Department may reach out for additional information. To view what additional steps individuals and employers can take should they believe a fraudulent claim has been filed, review DETR's [fraud flyer](#) located on the Bulletin Board at [www.detr.nv.gov](http://www.detr.nv.gov).

For Nevada workers who are self-employed, 1099 contract workers, and gig workers, Nevada's Pandemic Unemployment Assistance program (PUA) is now available. For further information regarding the PUA program visit [detr.nv.gov/pua#](http://detr.nv.gov/pua#). Individuals will be able to file online at [www.employnv.gov](http://www.employnv.gov) or call the PUA Call Center at (800) 603-9681 between 8 a.m. and 8 p.m., Monday through Friday, and Saturday between 8 a.m. and noon.

Claimants are encouraged to visit <http://ui.nv.gov/css.html> and at [detr.nv.gov/coronavirus](http://detr.nv.gov/coronavirus) to view important announcements and access essential resources. Online tutorial videos are also available in both English and Spanish and can be viewed on the [Nevada Unemployment Insurance](#) YouTube page.

###

Visit us <http://www.nevadaworkforce.com> and Follow us on Twitter: <http://www.twitter.com/NVlabormarket>

#### ABOUT THE RESEARCH AND ANALYSIS BUREAU

The Research and Analysis Bureau is Nevada's premier source for labor market information. A part of DETR, the Bureau is responsible for creating, analyzing, and reporting Nevada's labor market information, in cooperation with the United States Bureau of Labor Statistics (BLS).

# UNEMPLOYMENT INSURANCE CLAIMS

## INITIAL CLAIMS:

**10,938 REGULAR + 12,356 PUA**

Regular initial claims down 6,817 claims, or 38.4%, compared to the previous week.

Weekly total is the 19th most in state history.

PUA initial claims down 250, or 2.0%, compared to the previous week.

## CONTINUED CLAIMS:

**240,346 REGULAR + 109,617 PUA +  
19,798 PEUC + 1,477 SEB**

Regular continued claims down 95,622 claims, or 28.5%, compared to the previous week.

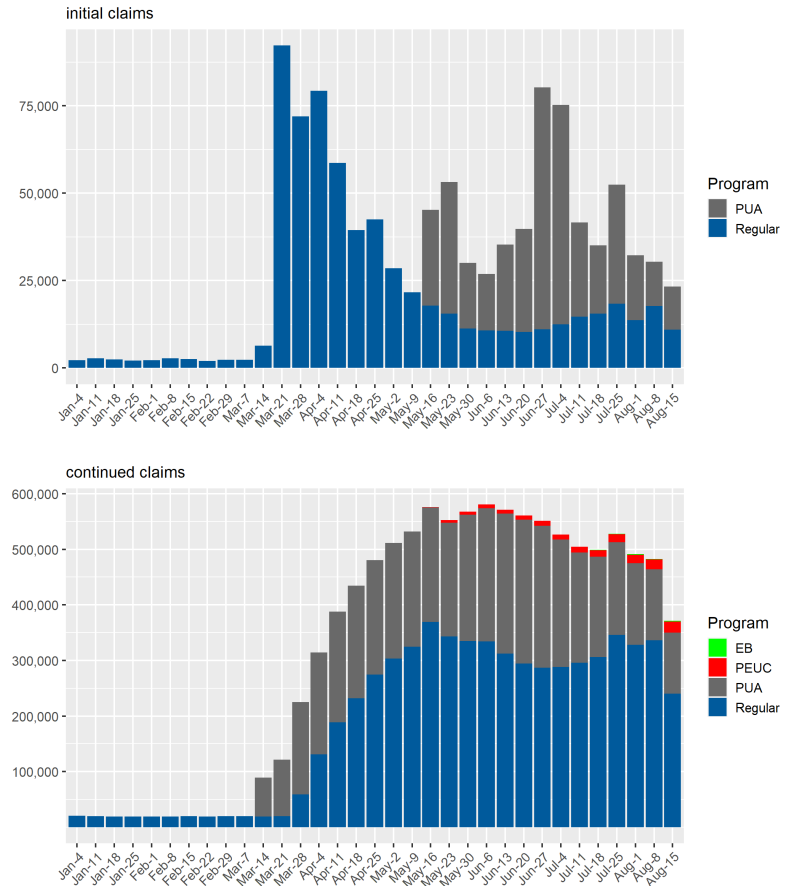
PUA continued claims down 18,109 claims, or 14.2%, compared to the previous week.

PEUC continued claims up 1,780 claims, or 9.9%, compared to the previous week.

SEB continued claims up 373 claims, or 33.8%, compared to the previous week.

Across all programs, there were a total of 371,238 claims filed in the week.

State of Nevada Weekly Claims for Unemployment Insurance  
weekly totals since start of 2020



Source: ETA 539





# State of Nevada Unemployment Insurance Claims

Filing Statistics for Week Ending 8/15/2020

Department of Employment, Training & Rehabilitation

Elisa Cafferata, Acting Director

Kimberly Gaa, Administrator

David Schmidt, Chief Economist

*Prepared by the Research and Analysis Bureau  
Updated: 2020-08-19*

# Weekly Federal UI Claim Statistics

# UI Initial Claims by Week

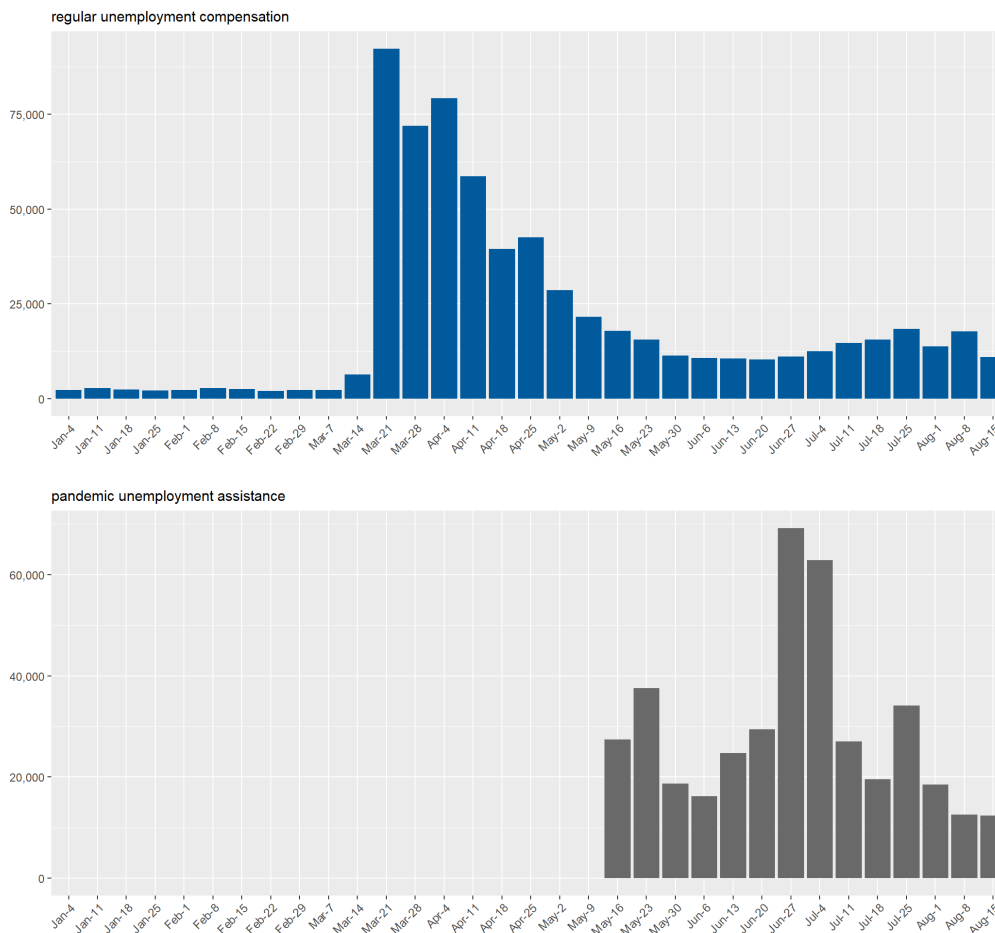
Final initial claims totals for week ending 8/15/2020 (ETA 539).

Regular initial claims totaled 10,938 in the week, down 6,817 claims, or 38.4%, compared to the previous week.

Pandemic Unemployment Assistance (PUA) claims totaled 12,356 in the week, down 250, or 2.0%, compared to the previous week.

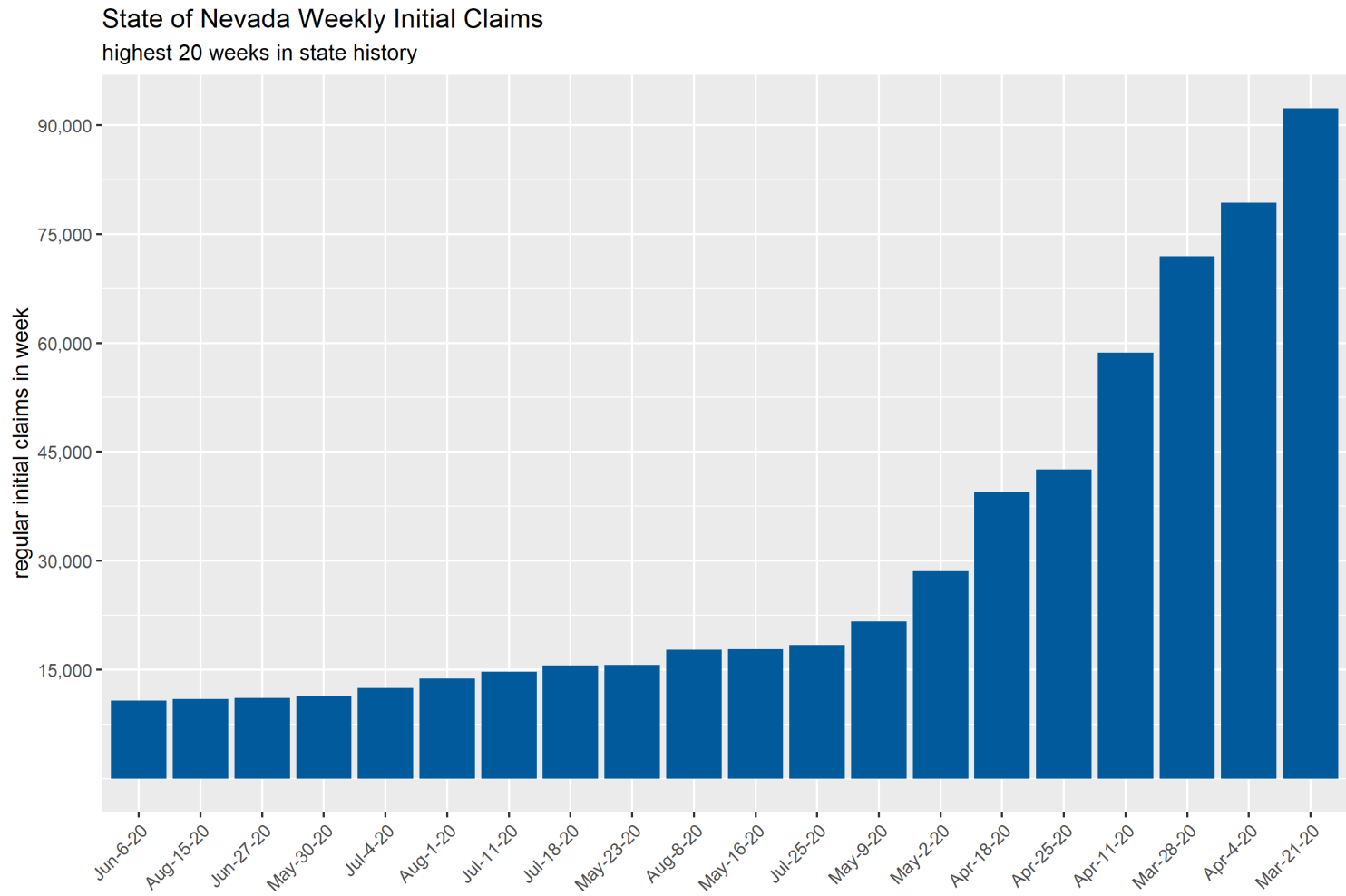
A claimant may have filed BOTH a regular initial claim and a PUA initial claim.

State of Nevada Weekly Initial Claims for Unemployment Insurance by program



Source: ETA 539

# State of Nevada Initial Claims All-Time Weekly Highs



Source: ETA 539

# UI Continued Claims by Week

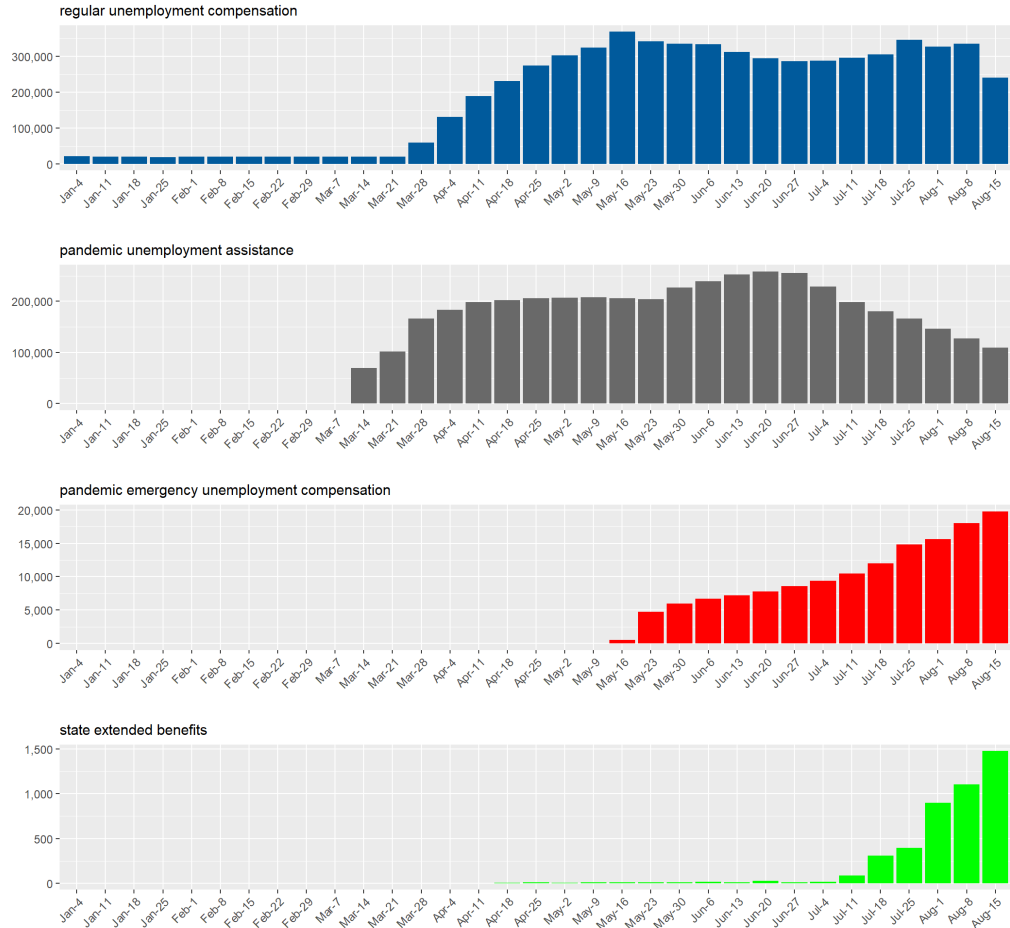
Regular continued claims totaled 240,346 in the week, down 95,622 claims, or 28.5%, compared to the previous week.

Pandemic Unemployment Assistance continued claims totaled 109,617 in the week, down 18,109 claims, or 14.2%, compared to the previous week. PUA continued claims are backdated to show the weeks PUA was claimed.

Pandemic Emergency Unemployment Compensation claims totaled 19,798 in the week, up 1,780 claims, or 9.9%, compared to the previous week.

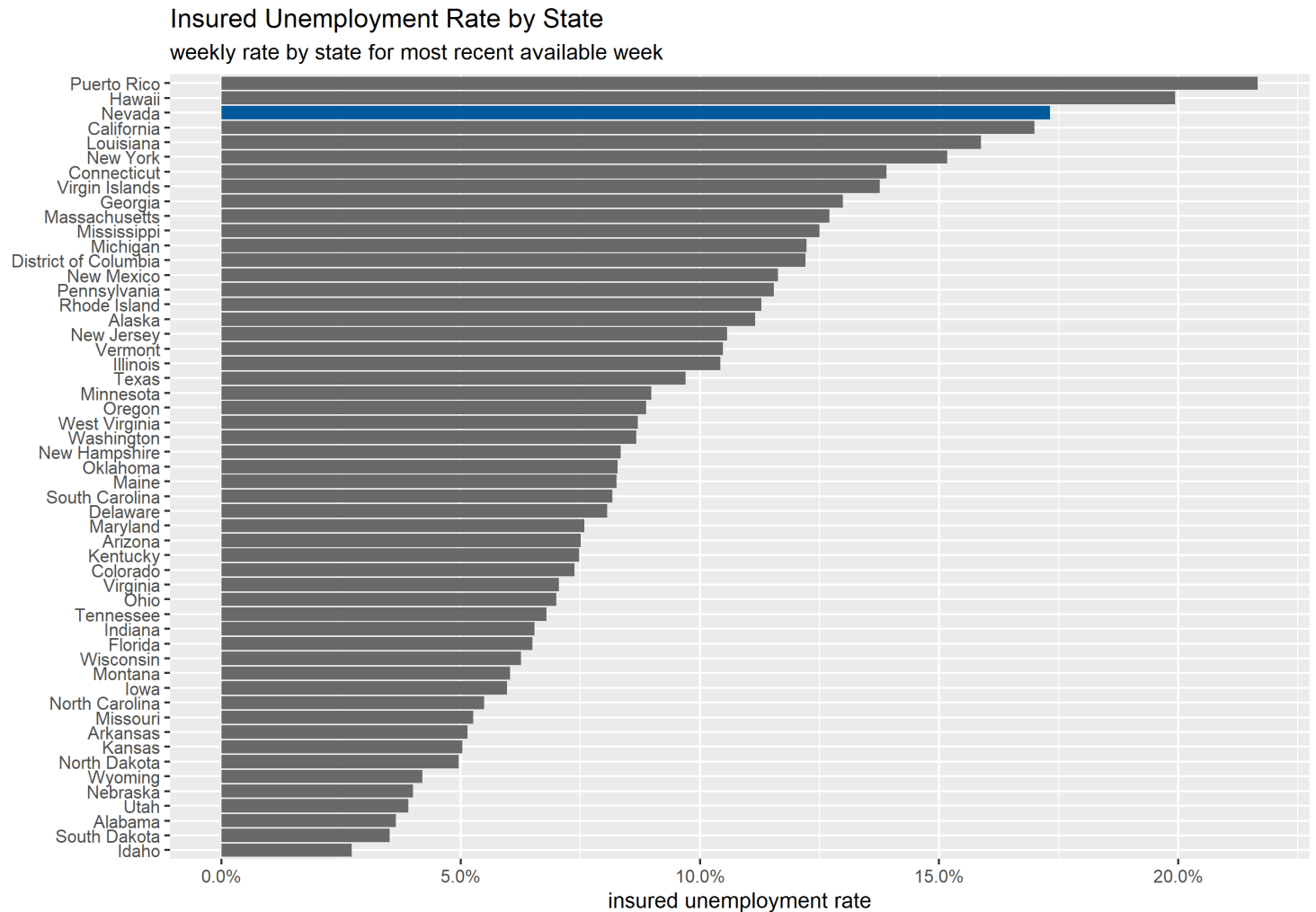
State Extended Benefit claims totaled 1,477 in the week, up 373 claims, or 33.8%, compared to the previous week.

State of Nevada Weekly Continued Claims for Unemployment Insurance by program



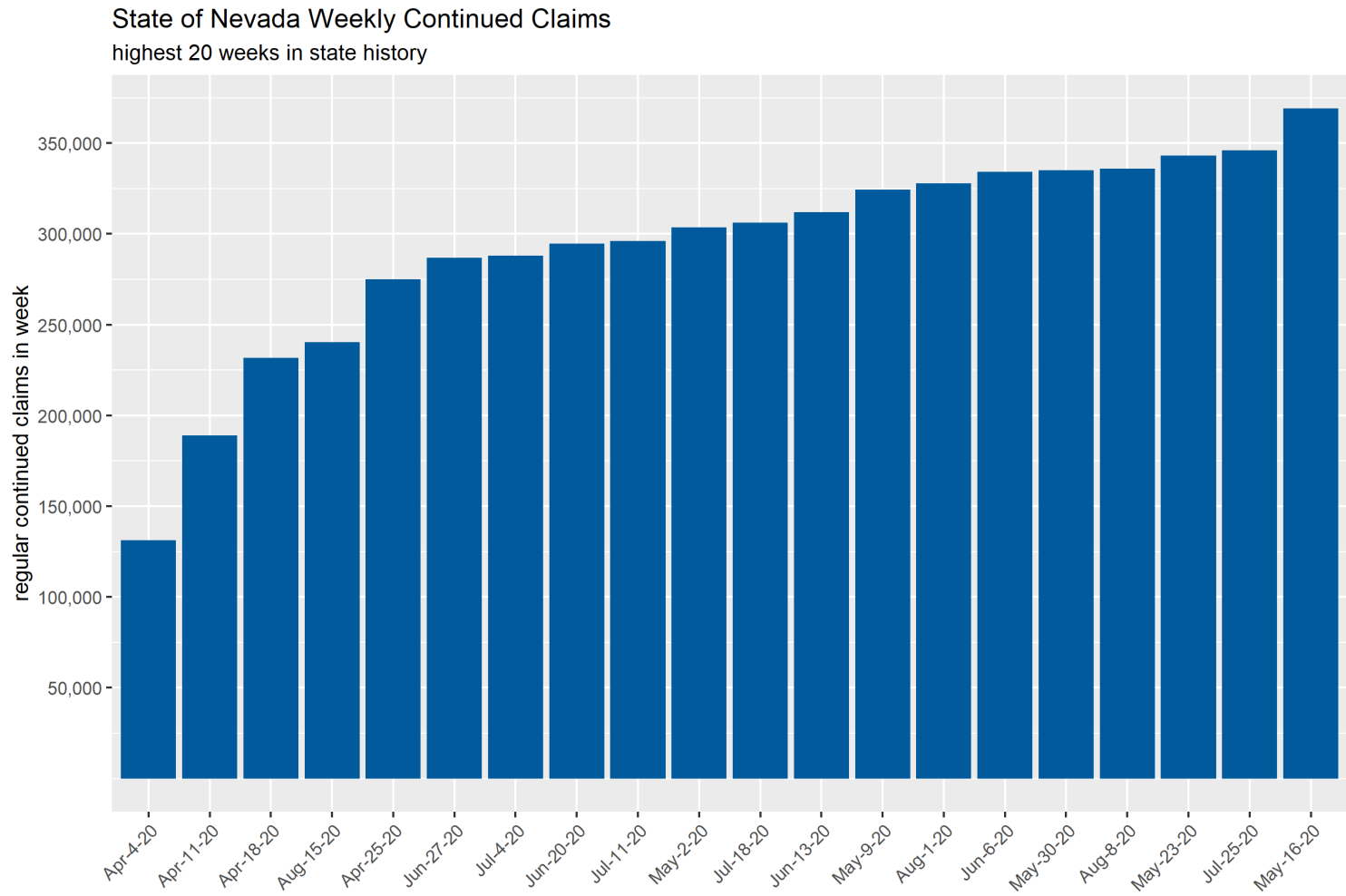
Source: ETA 539

# Insured Unemployment Rate



Source: ETA 539

# State of Nevada Continued Claims All-Time Weekly Highs



Source: ETA 539

# UI Trust Fund Status



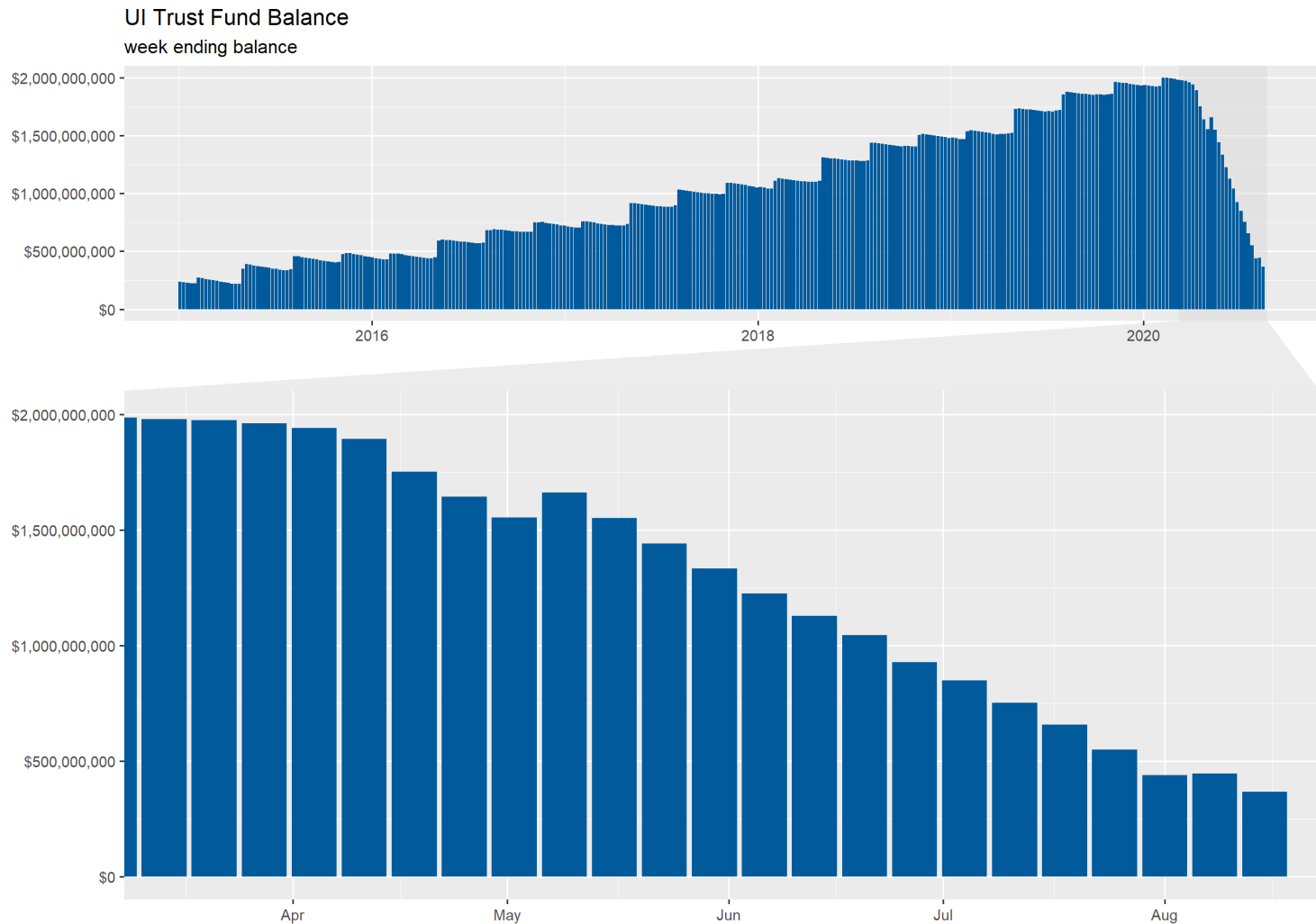
## UI Trust Fund Balance & Payment Activity

Reported totals and amounts for week ending 8/15/2020

This Trust Fund balance is the end of week balance from DETR Financial Management reports. Due to lags in reporting of transactions and adjustments, week-to-week totals may change. Weeks of benefits remaining is calculated by using last week's regular UI payments total.

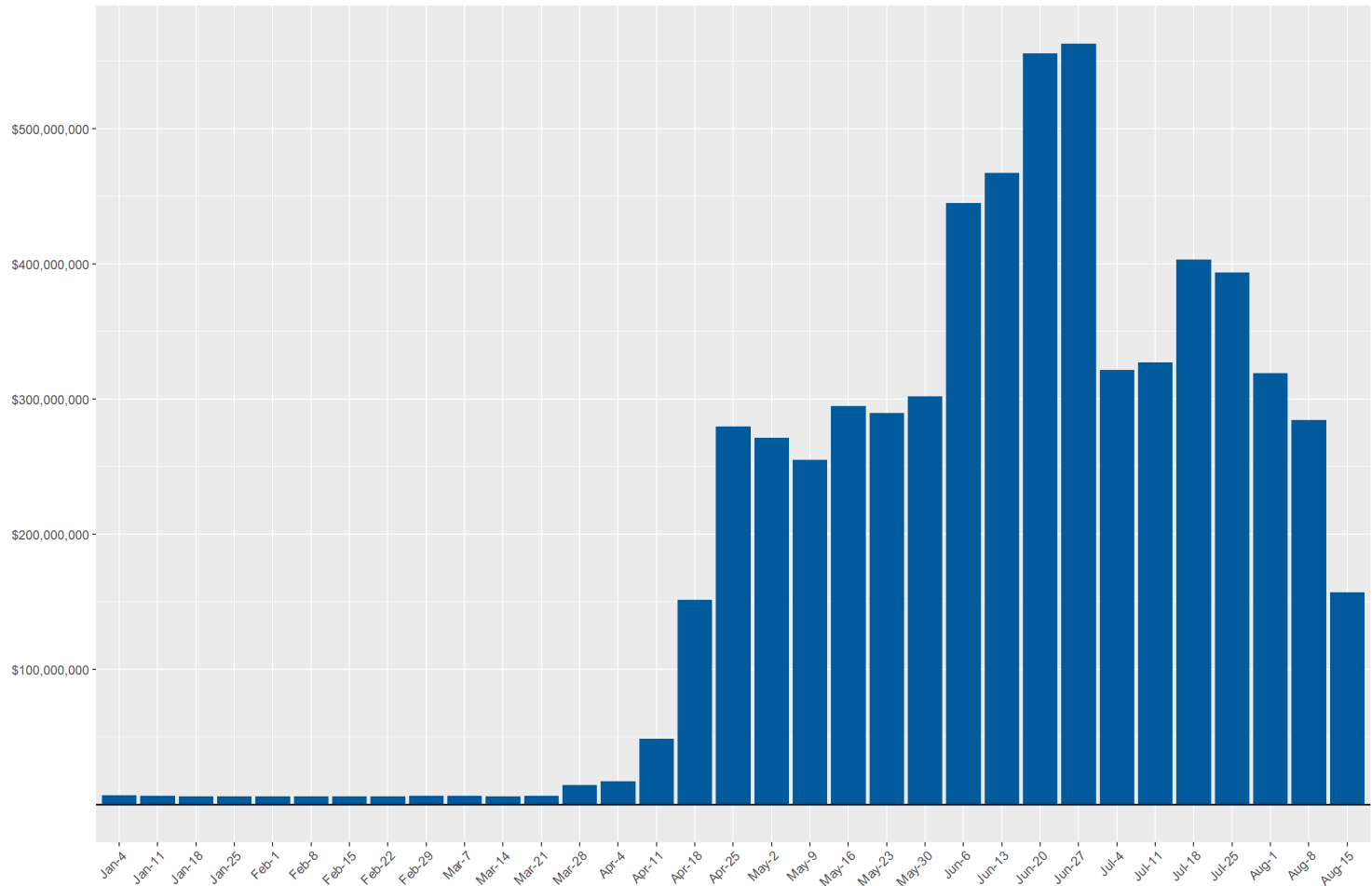
Measure	Current Week	Previous Week	Change from Previous Week	Year-to-Date
Trust Fund Balance	\$365,908,612	\$444,825,388	-\$78,916,776	-
Weeks of Benefits in Trust Fund	4.23	3.78	0.45	-
Regular UI Payments	\$86,508,505	\$117,668,935	-\$31,160,430	\$2,083,002,835
Regular-FPUC Payments	\$28,205,820	\$139,505,640	-\$111,299,820	\$2,828,305,920
PEUC Payments	\$5,212,080	\$4,817,050	\$395,030	\$42,217,696
PUA Payments	\$22,196,042	\$14,952,638	\$7,243,404	\$460,593,799
PUA-FPUC Payments	\$14,236,680	\$7,240,320	\$6,996,360	\$814,307,405
SEB Payments	\$294,041	\$179,773	\$114,268	\$665,741
All Programs	\$156,653,168	\$284,364,356	-\$127,711,188	\$6,229,093,395

# Trust Fund Balance



# Weekly Payments

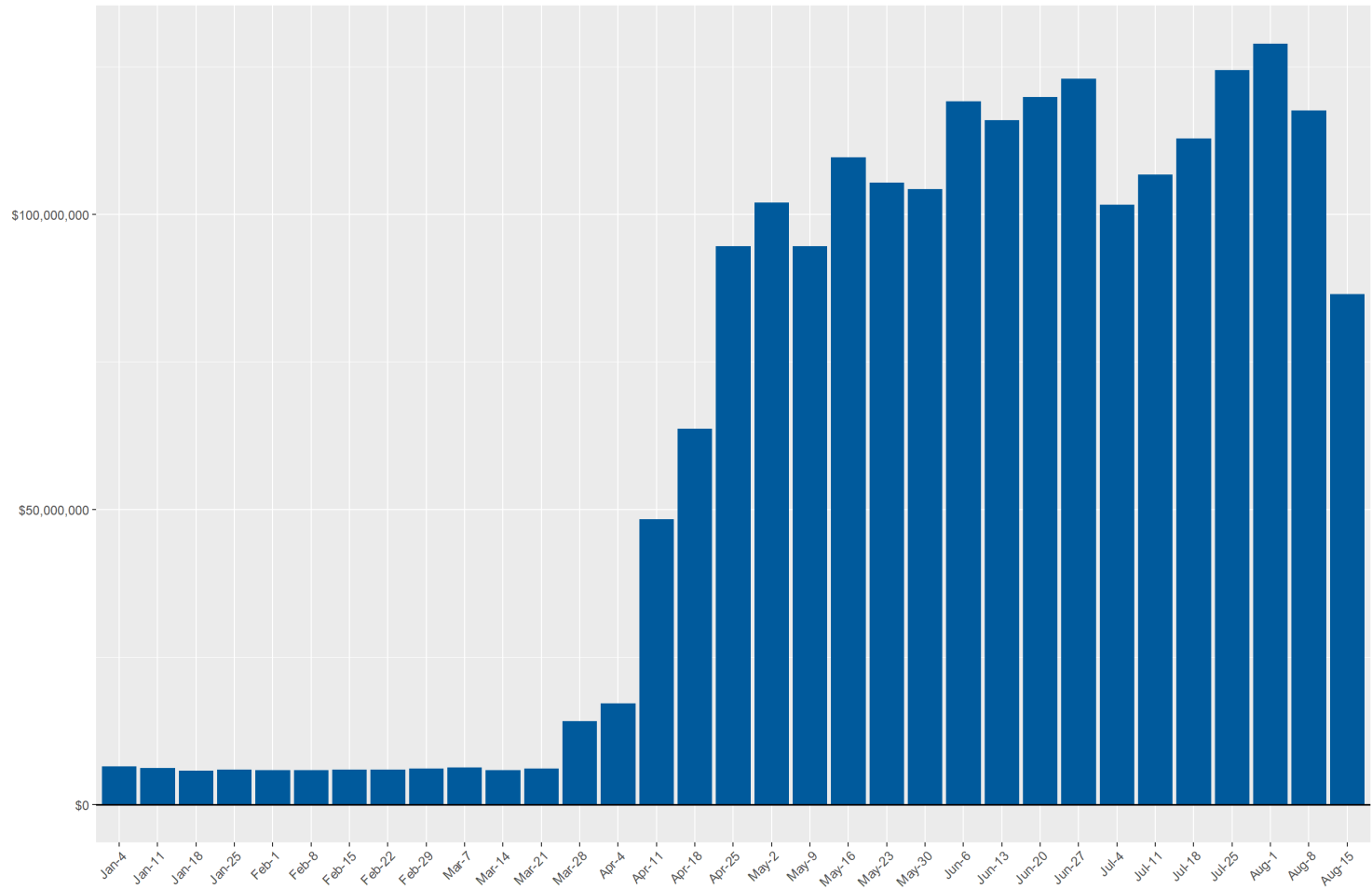
Unemployment Insurance Weekly Payments  
compensation total for all programs



Source: DETR Internal Reporting

# Weekly Payments by Program (Regular UI)

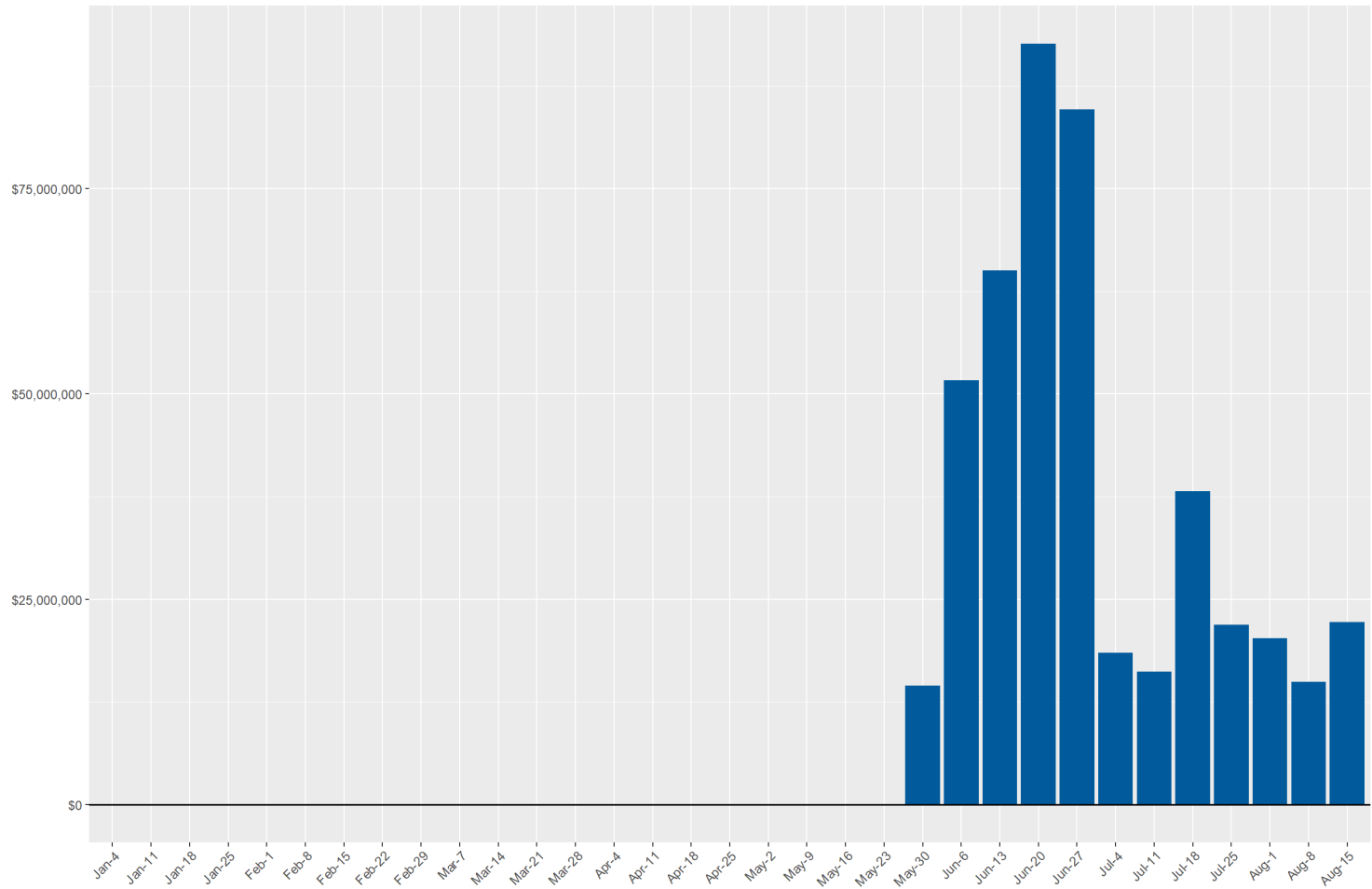
Unemployment Insurance Weekly Payments  
regular unemployment insurance compensation



Source: DETR Internal Reporting

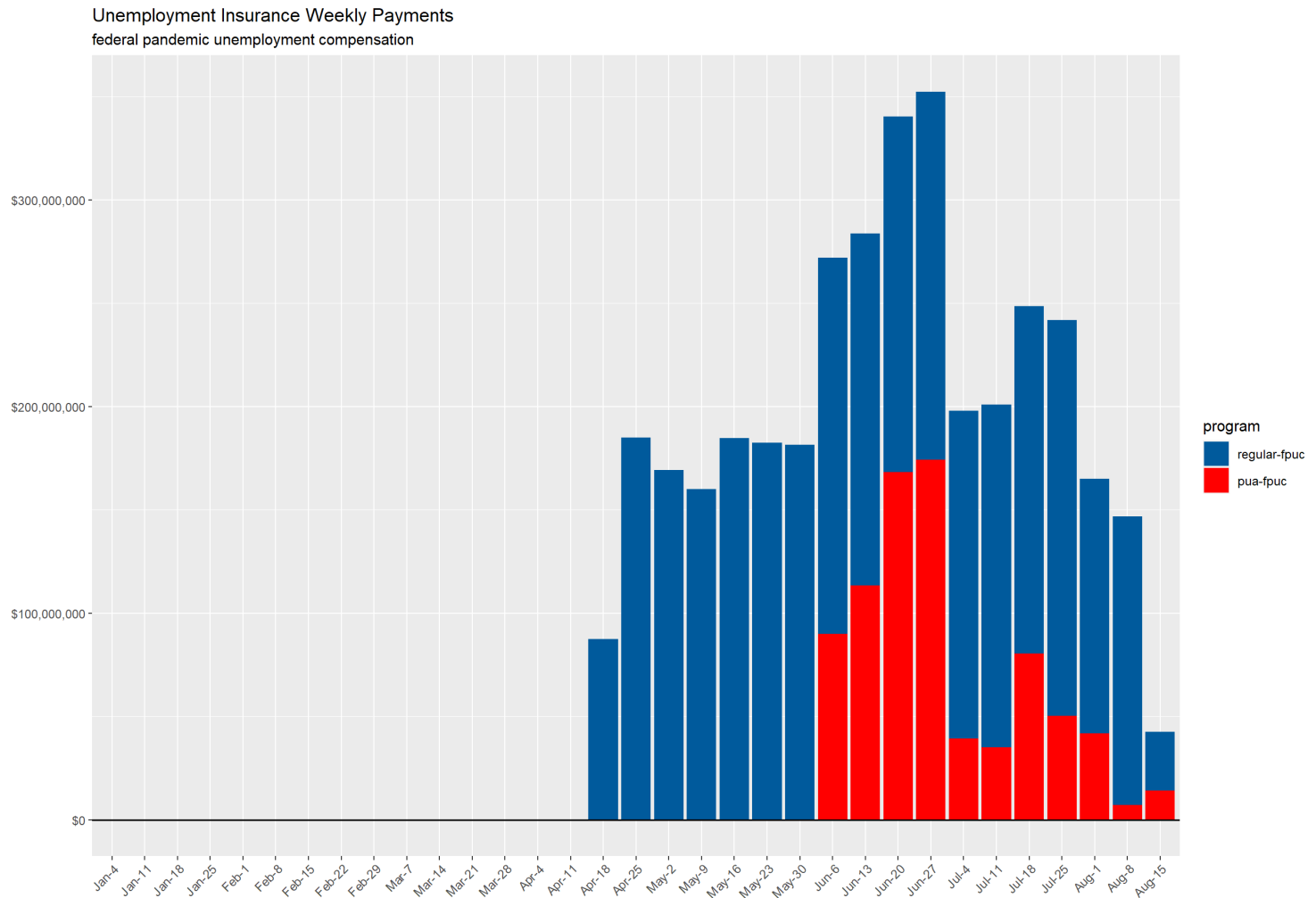
# Weekly Payments by Program (PUA)

Unemployment Insurance Weekly Payments  
pandemic unemployment assistance compensation



Source: DETR Internal Reporting

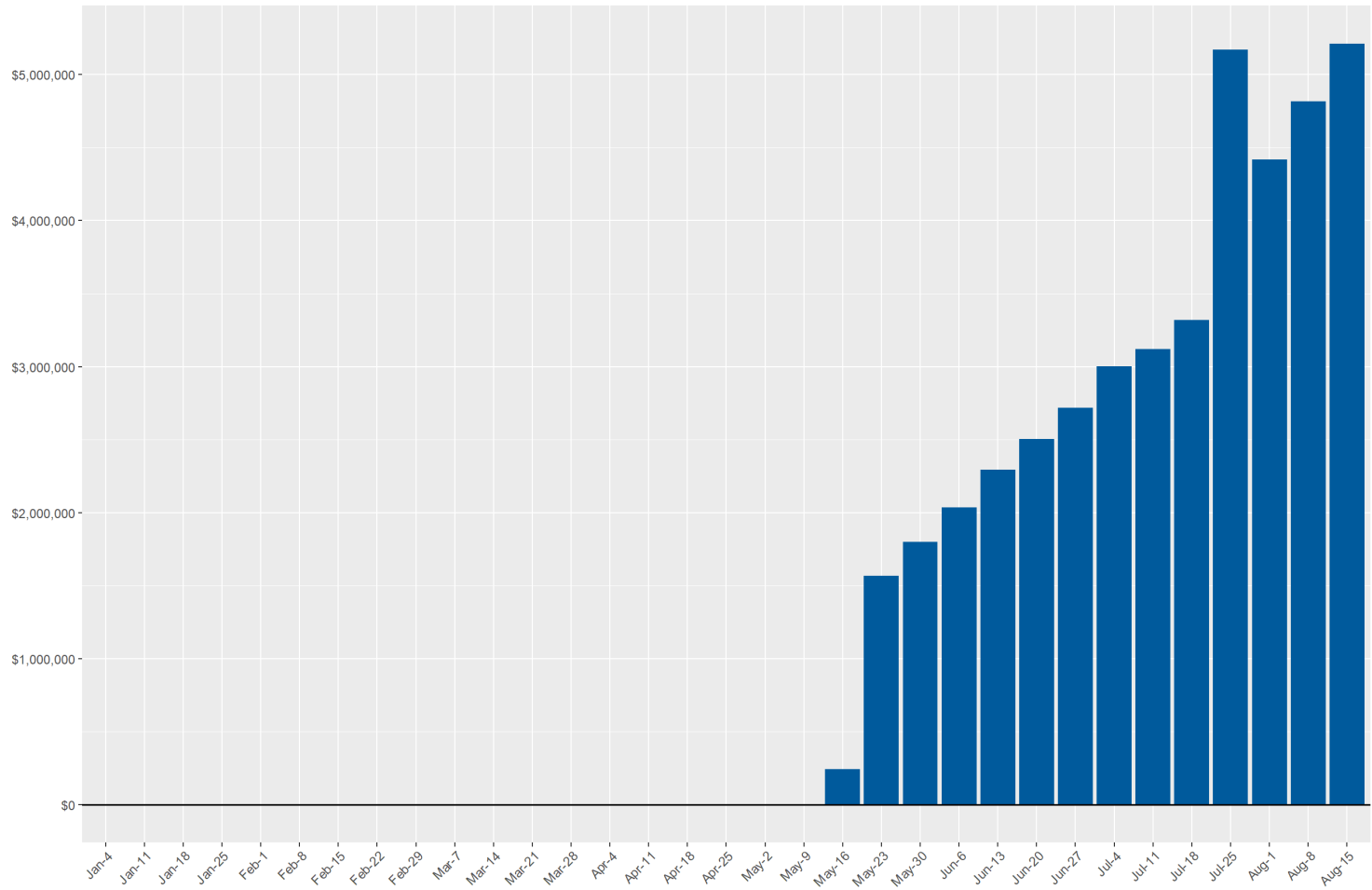
# Weekly Payments by Program (FPUC)



Source: DETR Internal Reporting

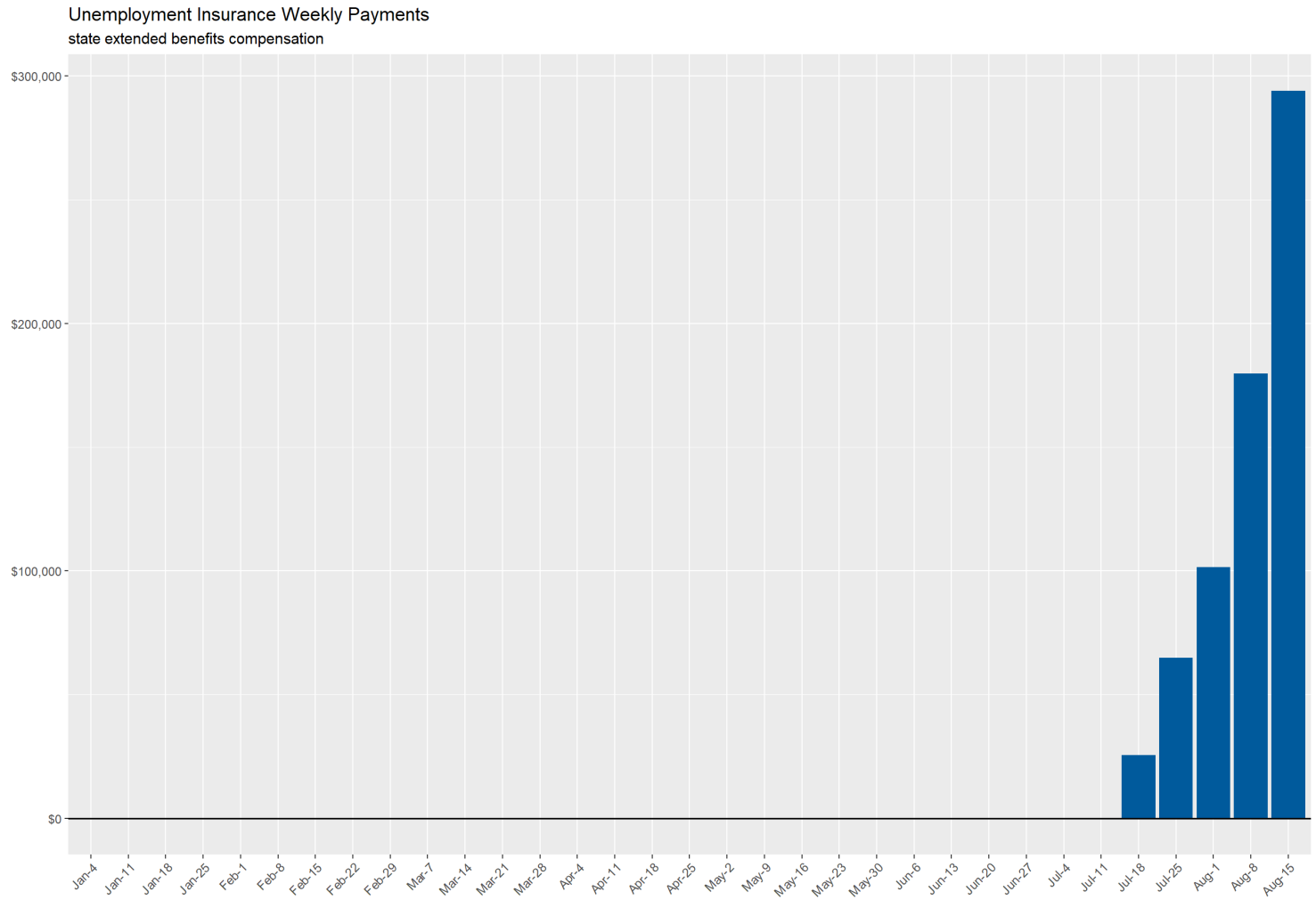
# Weekly Payments by Program (PEUC)

Unemployment Insurance Weekly Payments  
federal pandemic emergency unemployment compensation



Source: DETR Internal Reporting

# Weekly Payments by Program (SEB)



Source: DETR Internal Reporting



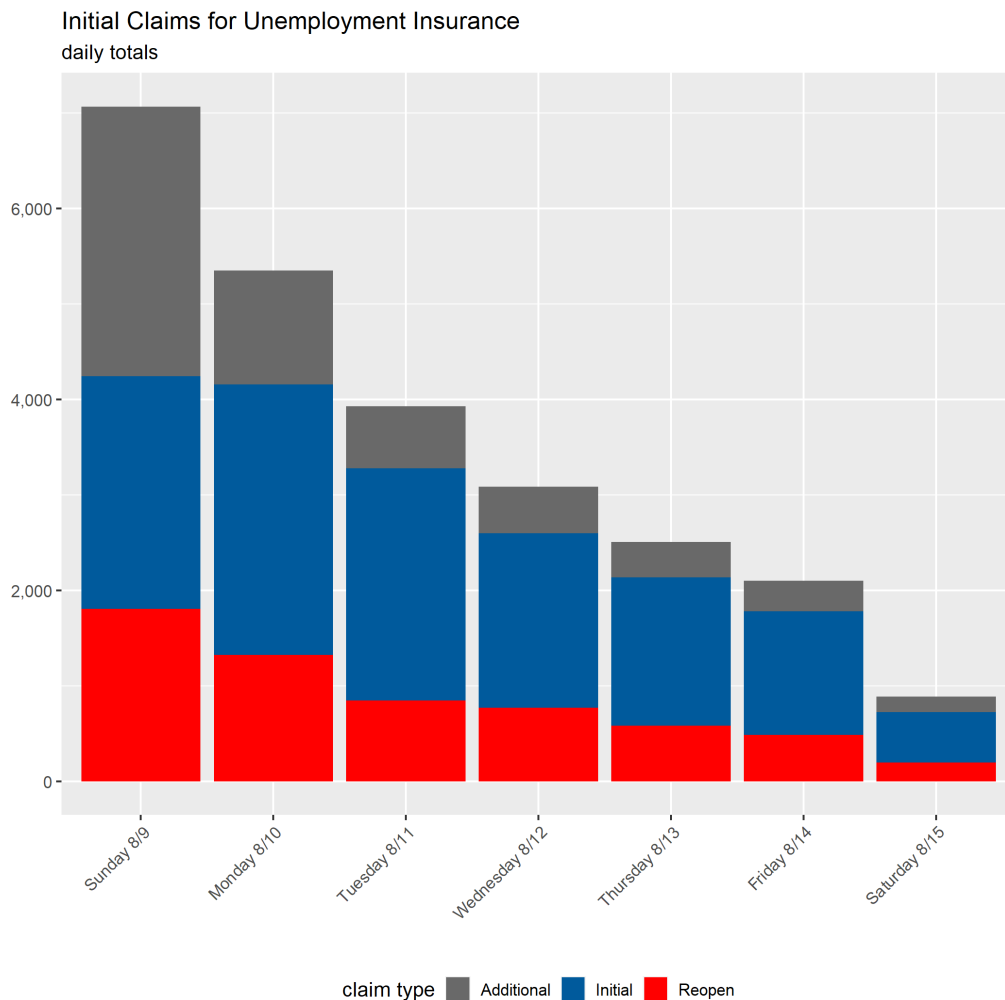
# UI Daily Claim Statistics (Regular UC)

# UI Initial Claims by Day for Week Ending 8/15/2020

Initial claims by type and filing method for week ending 8/15/2020.

Initial claims include new, additional, and reopened (see end of document for glossary of terms). Reopened claims are not counted in federal reporting totals.

Daily data is unofficial and is unlikely to match federal reporting totals due to reporting differences.



Source: DETR Internal Reporting

## UI Initial Claims by Day for Week Ending 8/15/2020

Claim Type	Filing Method	Sunday 8/9	Monday 8/10	Tuesday 8/11	Wednesday 8/12	Thursday 8/13	Friday 8/14	Saturday 8/15	Total
Claim Type & Filing Method									
Additional	Internet	863	571	408	350	285	247	131	2,855
Additional	Phone	1,963	622	241	138	89	73	32	3,158
Initial	Internet	2,430	2,568	2,144	1,590	1,353	1,115	524	11,724
Initial	Phone	4	264	290	234	201	176	3	1,172
Reopen	Internet	1,779	1,187	739	679	486	391	193	5,454
Reopen	Phone	30	139	108	94	95	97	5	568
Filing Method									
Total	Internet	5,072	4,326	3,291	2,619	2,124	1,753	848	20,033
Total	Phone	1,997	1,025	639	466	385	346	40	4,898
Total									
Total	All	7,069	5,351	3,930	3,085	2,509	2,099	888	24,931

# UI Initial Claims by Day Comparison to Previous Week

## Previous Week

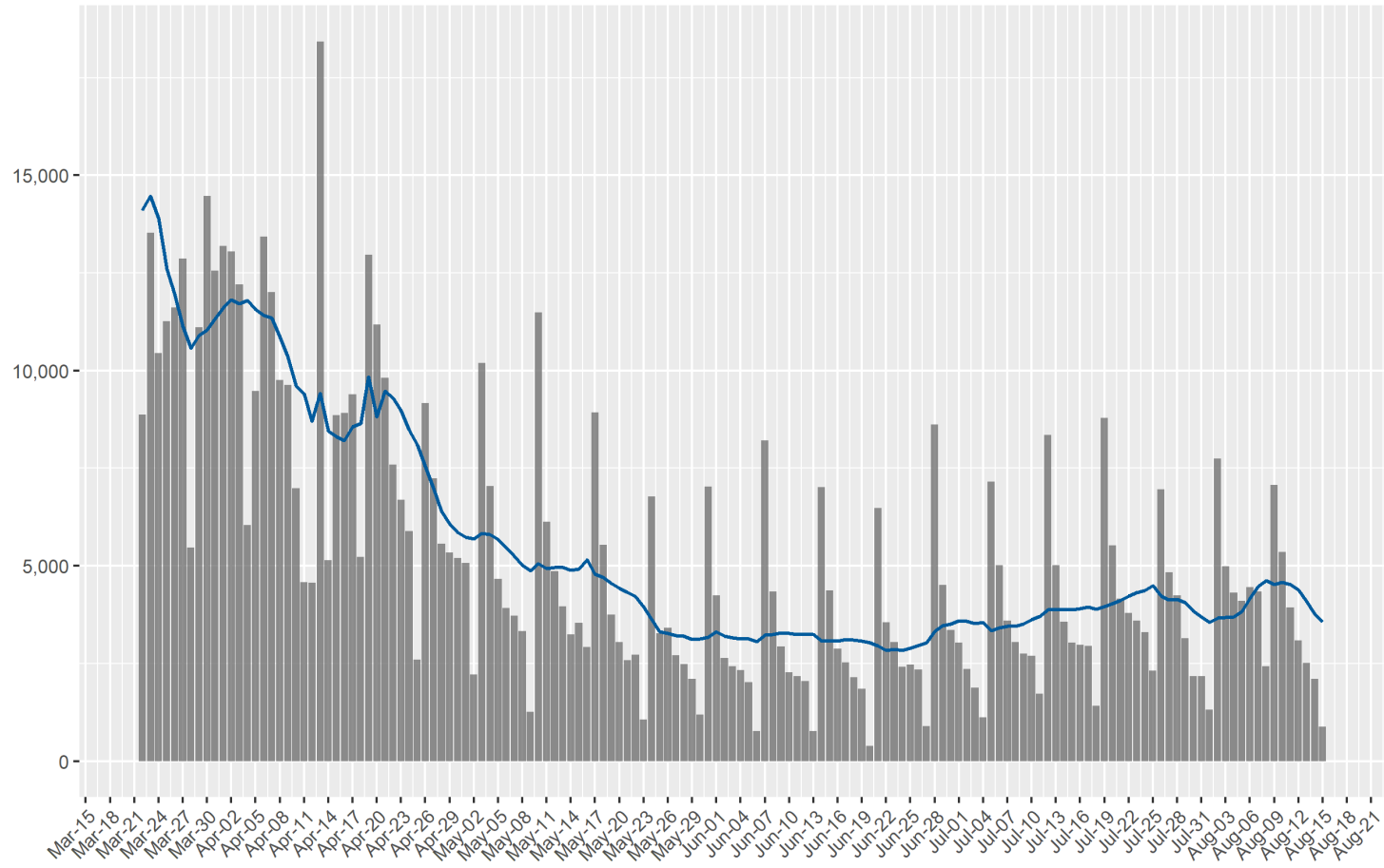
Claim Type	Sunday 8/2	Monday 8/3	Tuesday 8/4	Wednesday 8/5	Thursday 8/6	Friday 8/7	Saturday 8/8	Total
Additional	2,790	1,118	605	461	434	378	297	6,083
Initial	1,970	2,901	3,070	2,982	3,132	3,109	1,700	18,864
Reopen	2,988	974	643	664	891	848	430	7,438
Total	7,748	4,993	4,318	4,107	4,457	4,335	2,427	32,385

## Current Week

Claim Type	Sunday 8/9	Monday 8/10	Tuesday 8/11	Wednesday 8/12	Thursday 8/13	Friday 8/14	Saturday 8/15	Total
Additional	2,826	1,193	649	488	374	320	163	6,013
Initial	2,434	2,832	2,434	1,824	1,554	1,291	527	12,896
Reopen	1,809	1,326	847	773	581	488	198	6,022
Total	7,069	5,351	3,930	3,085	2,509	2,099	888	24,931

# UI Initial Claims Daily Series

Initial Claims for Unemployment Insurance  
daily filings since 3/22; line represents 7 day average



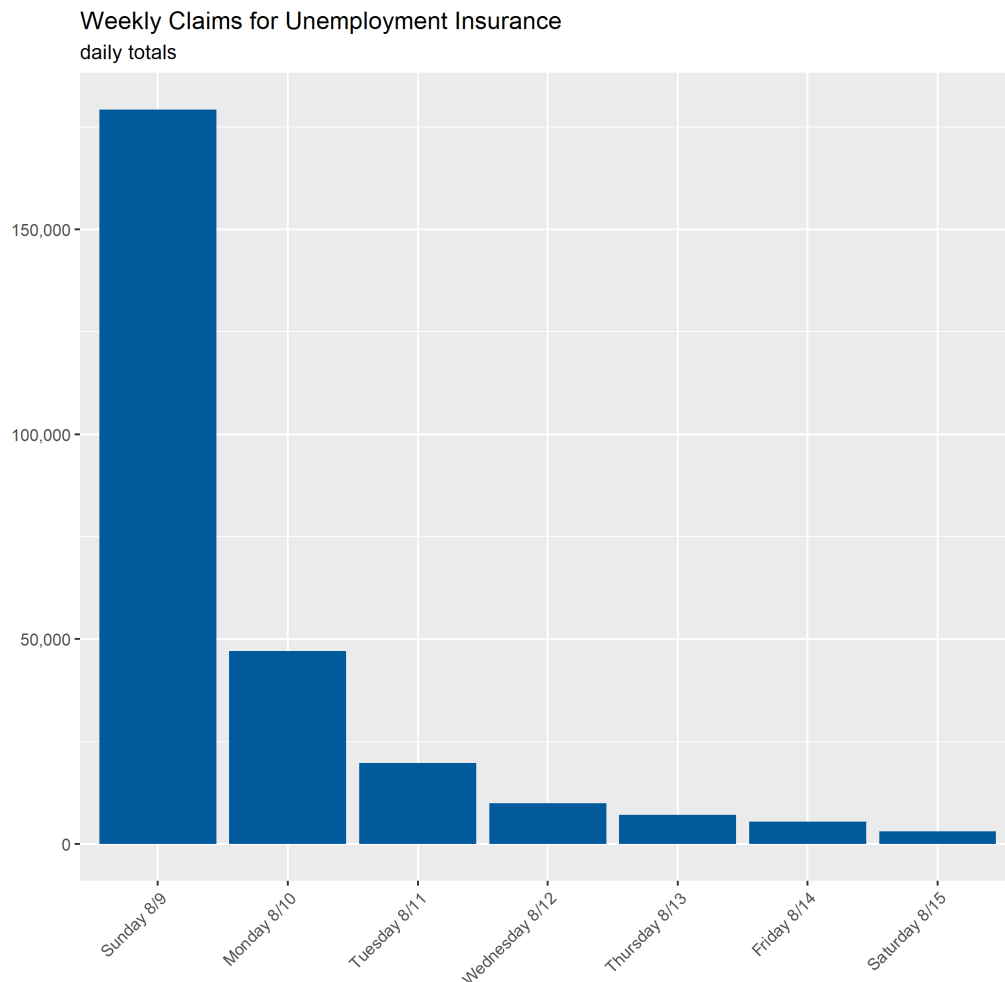
Source: DETR Internal Reporting

# UI Continued Claims by Day for Week Ending 8/15/2020

Continued claims by type and filing method for week ending 8/15/2020.

Sunday is the beginning of new claim week and when claimants *typically* file their weekly claim.

Daily data is unofficial and is unlikely to match federal reporting totals due to reporting differences.



Source: DETR Internal Reporting

## UI Continued Claims by Day for Week Ending 8/15/2020

Claim Type	Filing Method	Sunday 8/9	Monday 8/10	Tuesday 8/11	Wednesday 8/12	Thursday 8/13	Friday 8/14	Saturday 8/15	Total
Claim Type & Filing Method									
Weekly	Internet	166,176	43,992	17,951	8,522	5,749	4,374	2,959	249,723
Weekly	Phone	13,058	3,067	1,855	1,400	1,343	1,124	89	21,936
Filing Method									
Total	Internet	166,176	43,992	17,951	8,522	5,749	4,374	2,959	249,723
Total	Phone	13,058	3,067	1,855	1,400	1,343	1,124	89	21,936
Total									
Total	All	179,234	47,059	19,806	9,922	7,092	5,498	3,048	271,659

# UI Continued Claims by Day Comparison

## Last Week

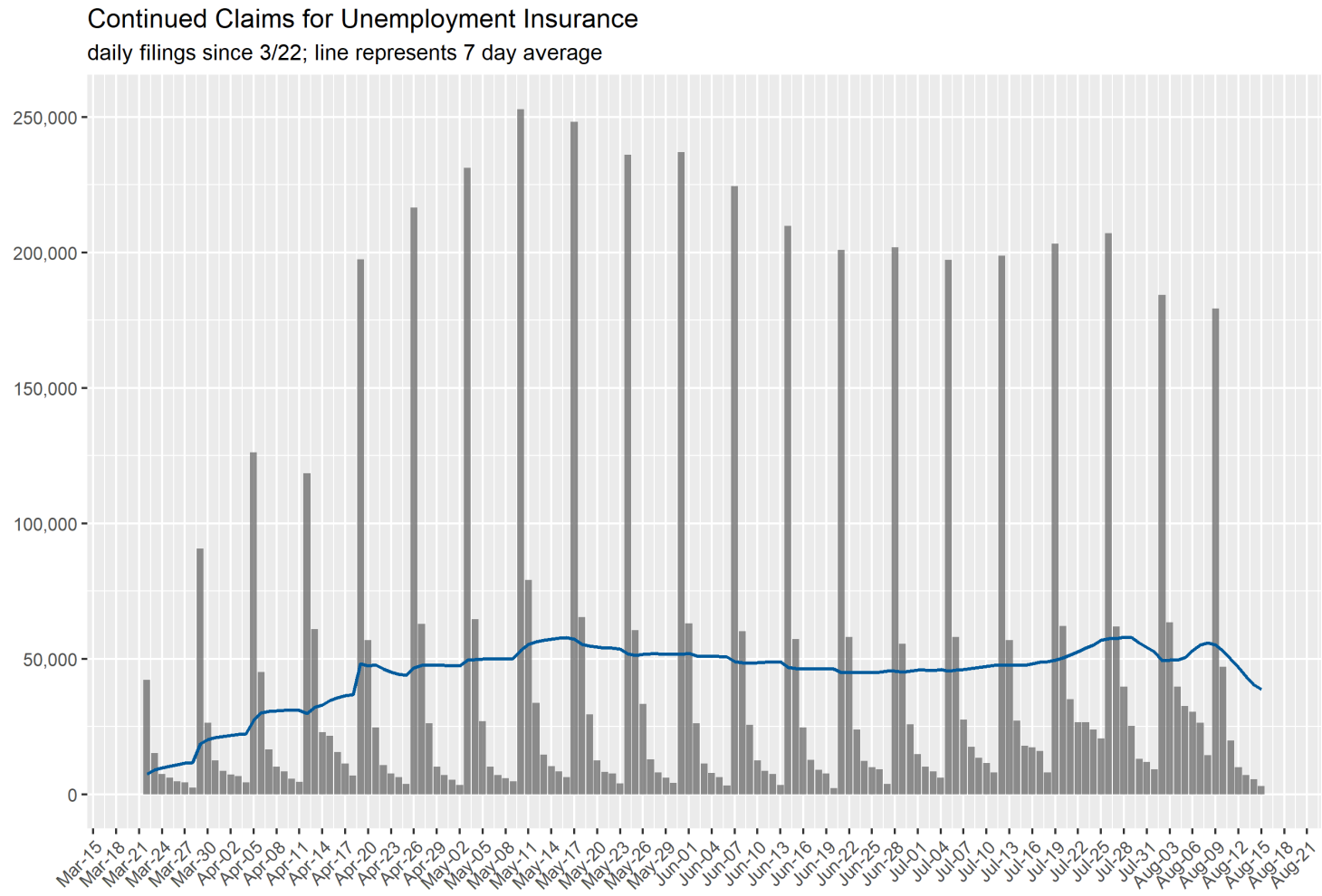
Claim Type	Sunday 8/2	Monday 8/3	Tuesday 8/4	Wednesday 8/5	Thursday 8/6	Friday 8/7	Saturday 8/8	Total
Weekly	184,378	63,447	39,627	32,632	30,436	26,356	14,496	391,372
Total	184,378	63,447	39,627	32,632	30,436	26,356	14,496	391,372

## Current Week

Claim Type	Sunday 8/9	Monday 8/10	Tuesday 8/11	Wednesday 8/12	Thursday 8/13	Friday 8/14	Saturday 8/15	Total
Weekly	179,234	47,059	19,806	9,922	7,092	5,498	3,048	271,659
Total	179,234	47,059	19,806	9,922	7,092	5,498	3,048	271,659

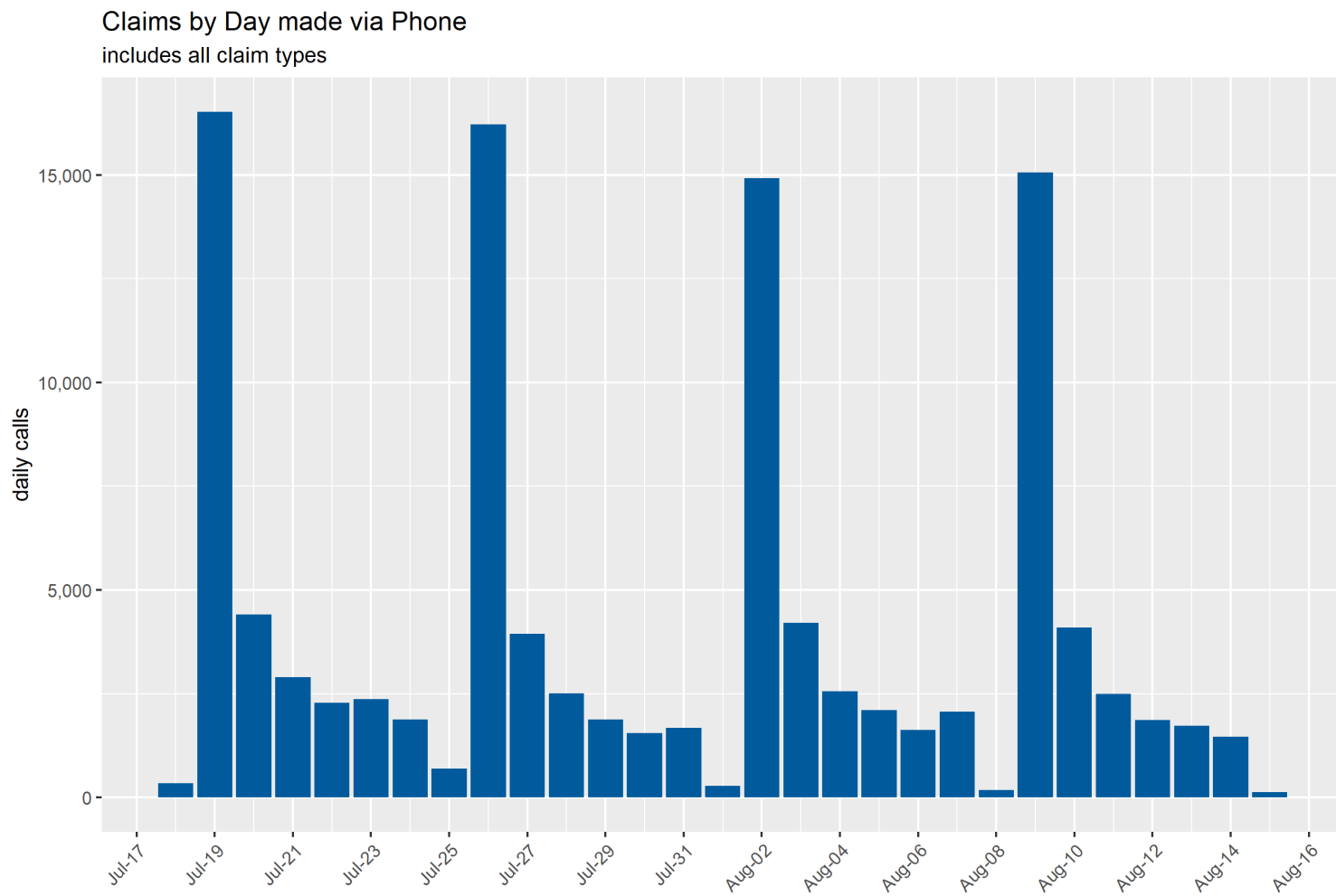


# UI Continued Claims Daily Series



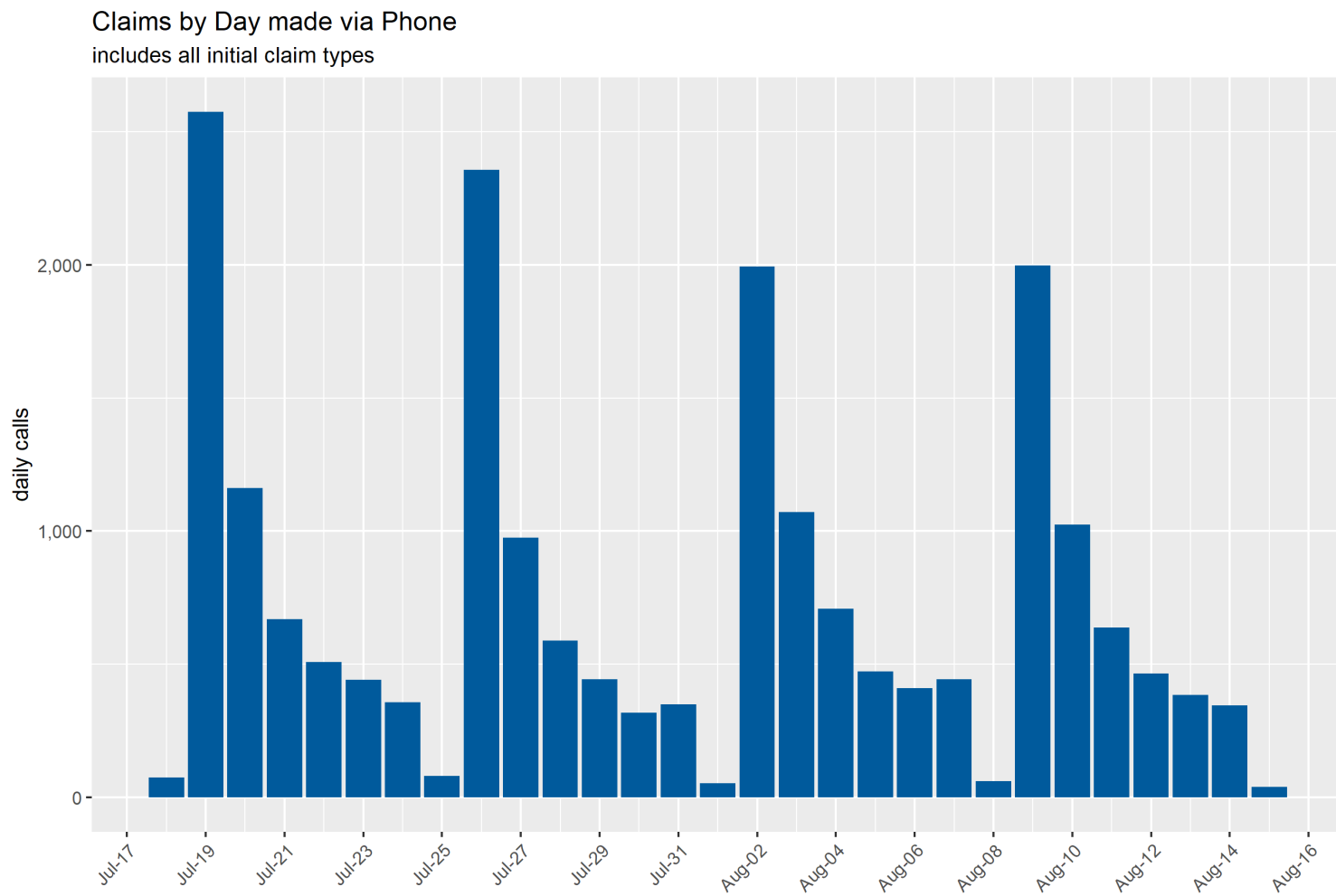
Source: DETR Internal Reporting

# Daily Phone Call Volume (All Claim Types)



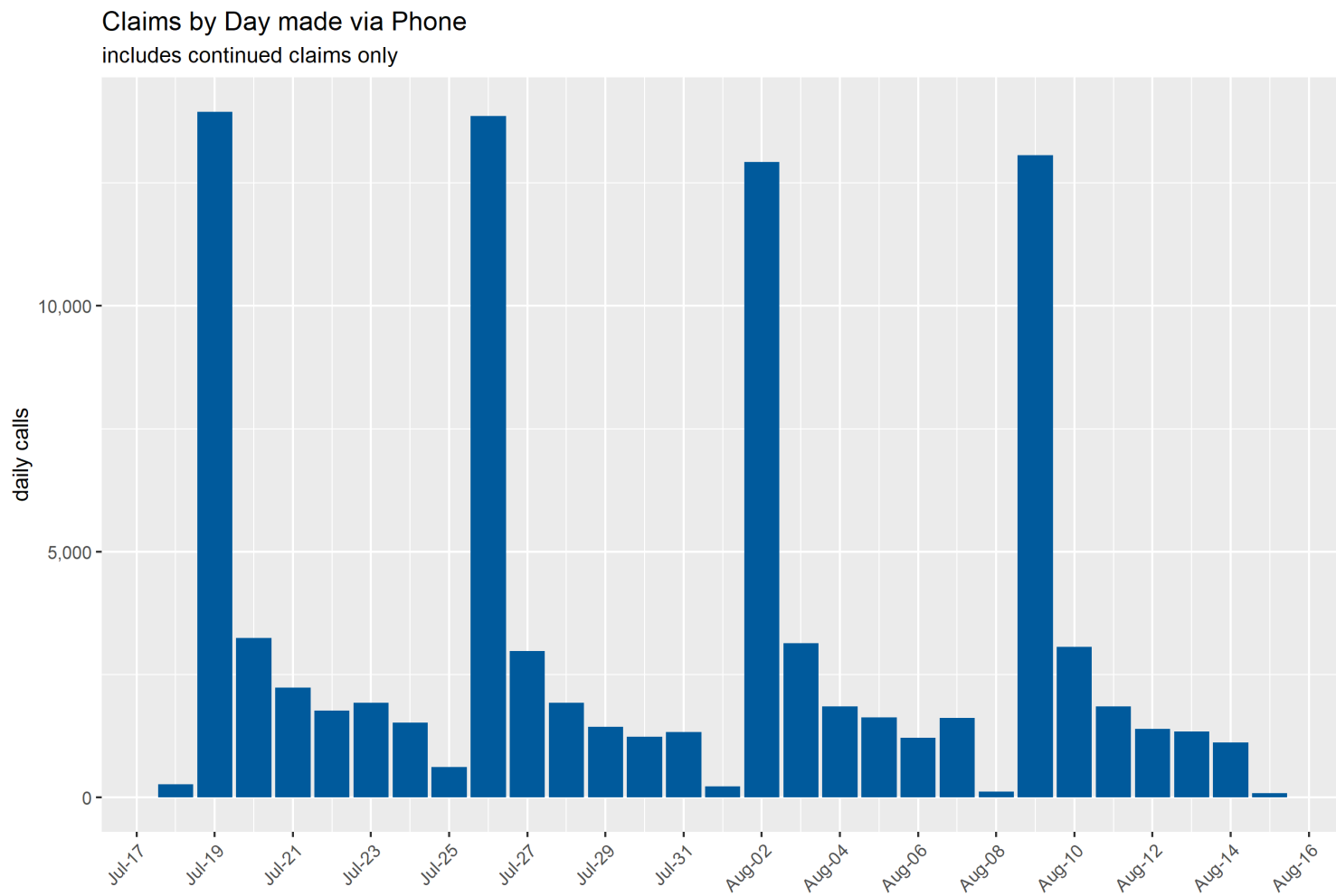
Source: DETR Internal Reporting

# Daily Phone Call Volume (Initial Claims)



Source: DETR Internal Reporting

# Daily Phone Call Volume (Continued Claims)



Source: DETR Internal Reporting

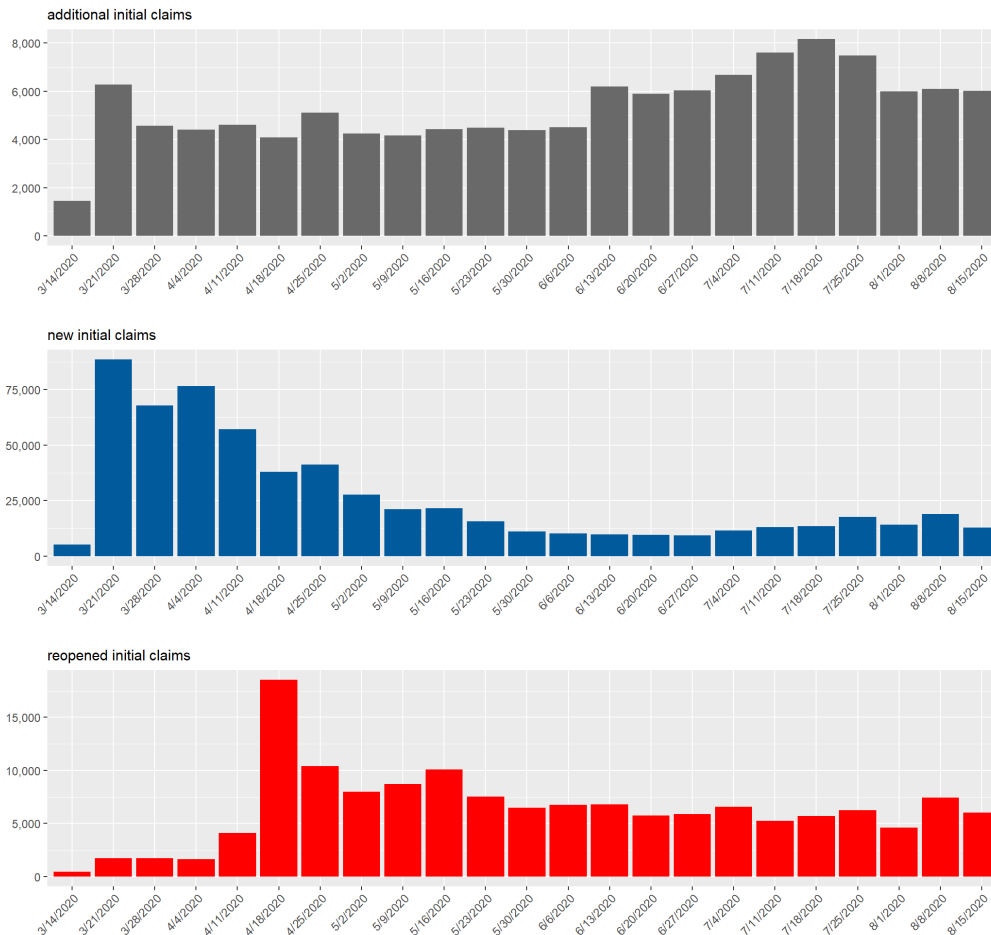
# UI Weekly Statistics (Regular UC)

# UI Initial Claims by Week

Initial claims totals by type for week ending 8/15/2020.

Weekly data is unofficial and is unlikely to match federal reporting totals due to reporting differences.

Initial Claims for Unemployment Insurance  
by week ending



Source: DETR Internal Reporting

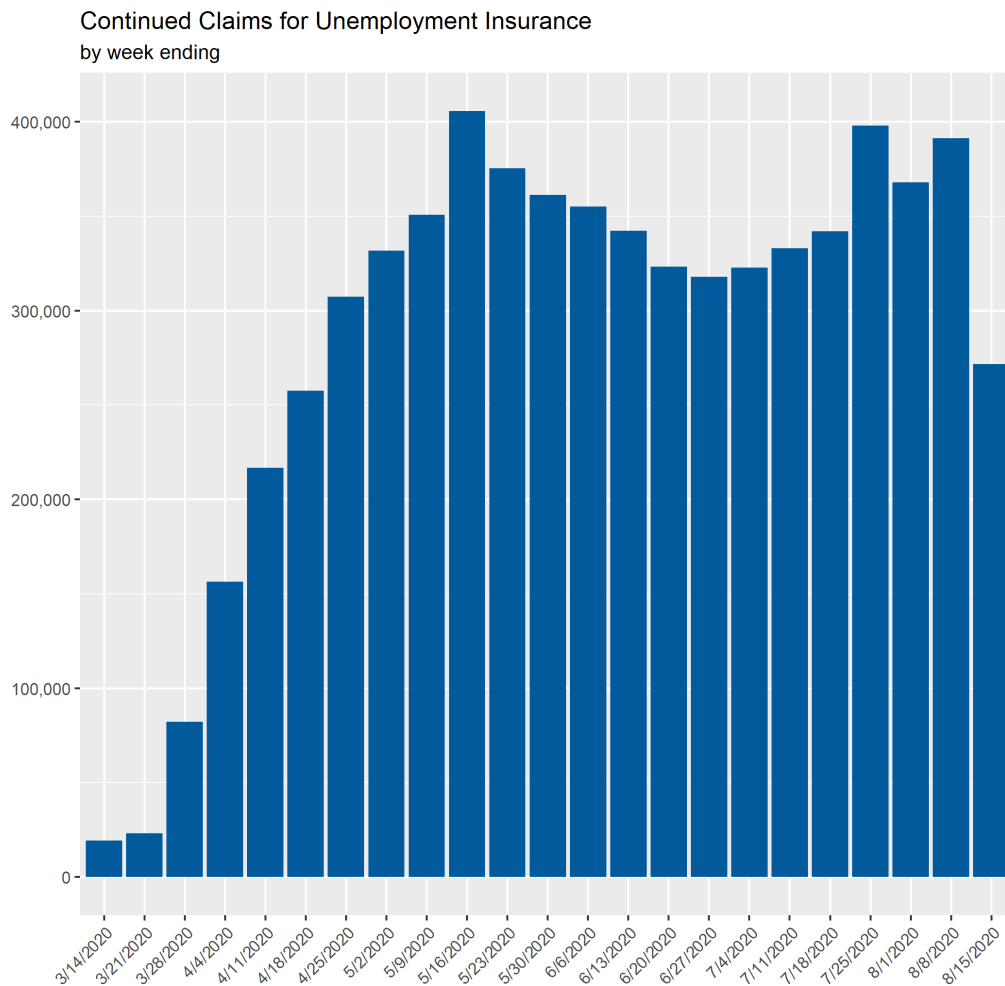
## UI Initial Claims by Week

Claim Type	Filing Method	2020-06-20	2020-06-27	2020-07-04	2020-07-11	2020-07-18	2020-07-25	2020-08-01	2020-08-08	2020-08-15
Claim Type & Filing Method										
Additional	CSS	1,811	2,108	2,577	3,485	4,240	3,530	2,494	2,831	2,855
Additional	IVR	4,084	3,924	4,108	4,110	3,923	3,952	3,498	3,252	3,158
Initial	CSS	8,126	8,089	10,619	11,770	12,242	16,613	13,267	17,552	11,724
Initial	IVR	1,432	1,218	993	1,368	1,176	1,131	994	1,312	1,172
Reopen	CSS	5,239	5,314	6,048	4,669	5,153	5,540	3,995	6,838	5,454
Reopen	IVR	500	553	522	566	546	714	592	600	568
Filing Method										
Total	CSS	15,176	15,511	19,244	19,924	21,635	25,683	19,756	27,221	20,033
Total	IVR	6,016	5,695	5,623	6,044	5,645	5,797	5,084	5,164	4,898
Total										
Total	All	21,192	21,206	24,867	25,968	27,280	31,480	24,840	32,385	24,931

# UI Continued Claims by Week

Continued claims totals for week ending 8/15/2020.

Weekly data is unofficial and is unlikely to match federal reporting totals due to reporting differences.



Source: DETR Internal Reporting



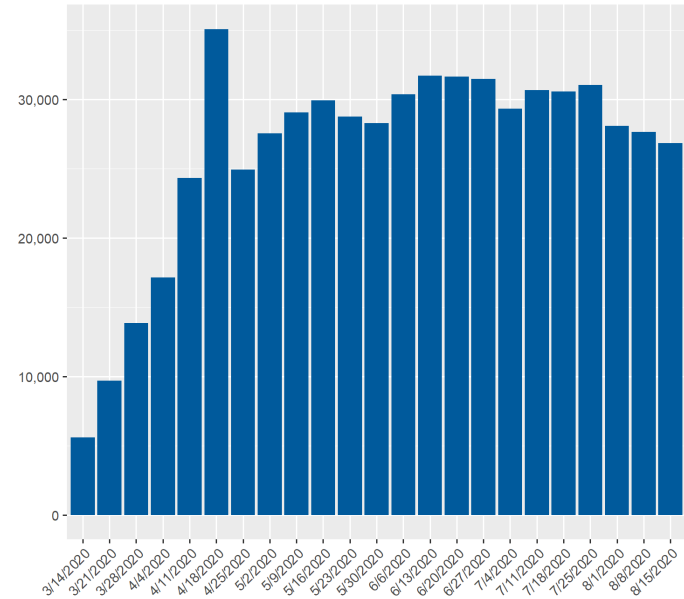
## UI Continued Claims by Week

Claim Type	Filing Method	2020-06-20	2020-06-27	2020-07-04	2020-07-11	2020-07-18	2020-07-25	2020-08-01	2020-08-08	2020-08-15
Claim Type & Filing Method										
Weekly	CSS	297,588	292,069	299,012	308,511	317,192	372,834	344,986	368,878	249,723
Weekly	IVR	25,617	25,772	23,693	24,626	24,933	25,256	22,994	22,494	21,936
Filing Method										
Total	CSS	297,588	292,069	299,012	308,511	317,192	372,834	344,986	368,878	249,723
Total	IVR	25,617	25,772	23,693	24,626	24,933	25,256	22,994	22,494	21,936
Total										
Total	All	323,205	317,841	322,705	333,137	342,125	398,090	367,980	391,372	271,659

## Weekly Call Volume (All Claim Types)

Week	Total Phone Claims	+/- change	% change
3/14/2020	5,619	-	-
3/21/2020	9,685	4,066	72.36%
3/28/2020	13,845	4,160	42.95%
4/4/2020	17,138	3,293	23.78%
4/11/2020	24,334	7,196	41.99%
4/18/2020	35,080	10,746	44.16%
4/25/2020	24,933	-10,147	-28.93%
5/2/2020	27,549	2,616	10.49%
5/9/2020	29,073	1,524	5.53%
5/16/2020	29,936	863	2.97%
5/23/2020	28,742	-1,194	-3.99%
5/30/2020	28,282	-460	-1.60%
6/6/2020	30,369	2,087	7.38%
6/13/2020	31,716	1,347	4.44%
6/20/2020	31,633	-83	-0.26%
6/27/2020	31,467	-166	-0.52%
7/4/2020	29,316	-2,151	-6.84%
7/11/2020	30,670	1,354	4.62%
7/18/2020	30,578	-92	-0.30%
7/25/2020	31,053	475	1.55%
8/1/2020	28,078	-2,975	-9.58%
8/8/2020	27,658	-420	-1.50%
8/15/2020	26,834	-824	-2.98%

Unemployment Insurance Claims by Week made via Phone  
includes all claim types

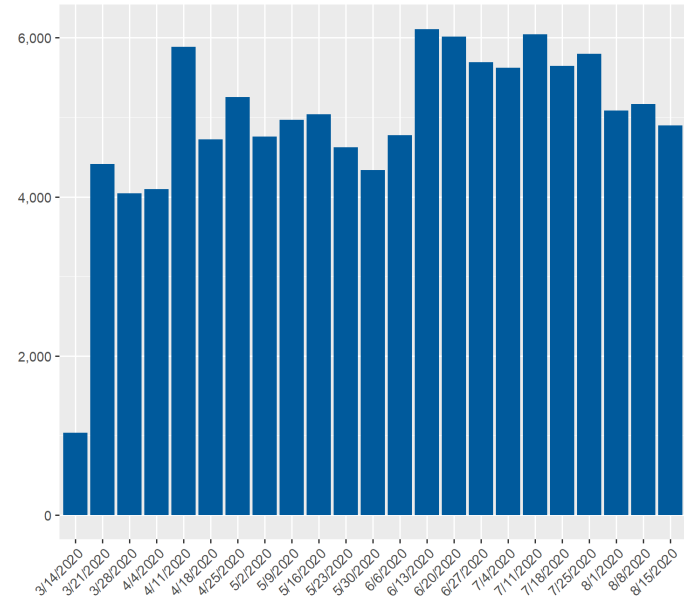


Source: DETR Internal Reporting

# Weekly Call Volume (Initial Claims)

Week	Total Phone Claims	+/- change	% change
3/14/2020	1,033	-	-
3/21/2020	4,413	3,380	327.20%
3/28/2020	4,046	-367	-8.32%
4/4/2020	4,096	50	1.24%
4/11/2020	5,887	1,791	43.73%
4/18/2020	4,724	-1,163	-19.76%
4/25/2020	5,256	532	11.26%
5/2/2020	4,760	-496	-9.44%
5/9/2020	4,965	205	4.31%
5/16/2020	5,036	71	1.43%
5/23/2020	4,622	-414	-8.22%
5/30/2020	4,334	-288	-6.23%
6/6/2020	4,774	440	10.15%
6/13/2020	6,110	1,336	27.98%
6/20/2020	6,016	-94	-1.54%
6/27/2020	5,695	-321	-5.34%
7/4/2020	5,623	-72	-1.26%
7/11/2020	6,044	421	7.49%
7/18/2020	5,645	-399	-6.60%
7/25/2020	5,797	152	2.69%
8/1/2020	5,084	-713	-12.30%
8/8/2020	5,164	80	1.57%
8/15/2020	4,898	-266	-5.15%

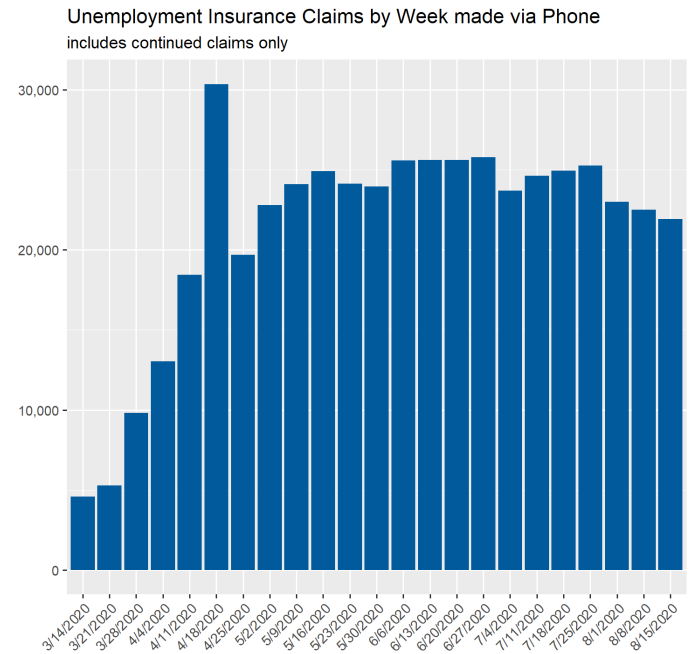
Unemployment Insurance Claims by Week made via Phone  
includes all initial claim types



Source: DETR Internal Reporting

## Weekly Call Volume (Continued Claims)

Week	Total Phone Claims	+/- change	% change
3/14/2020	4,586	-	-
3/21/2020	5,272	686	14.96%
3/28/2020	9,799	4,527	85.87%
4/4/2020	13,042	3,243	33.10%
4/11/2020	18,447	5,405	41.44%
4/18/2020	30,356	11,909	64.56%
4/25/2020	19,677	-10,679	-35.18%
5/2/2020	22,789	3,112	15.82%
5/9/2020	24,108	1,319	5.79%
5/16/2020	24,900	792	3.29%
5/23/2020	24,120	-780	-3.13%
5/30/2020	23,948	-172	-0.71%
6/6/2020	25,595	1,647	6.88%
6/13/2020	25,606	11	0.04%
6/20/2020	25,617	11	0.04%
6/27/2020	25,772	155	0.61%
7/4/2020	23,693	-2,079	-8.07%
7/11/2020	24,626	933	3.94%
7/18/2020	24,933	307	1.25%
7/25/2020	25,256	323	1.30%
8/1/2020	22,994	-2,262	-8.96%
8/8/2020	22,494	-500	-2.17%
8/15/2020	21,936	-558	-2.48%



Source: DETR Internal Reporting

# UI Claims Activity by County (Regular UC)

## UI Daily Initial Claims by County for Week Ending 8/15/2020

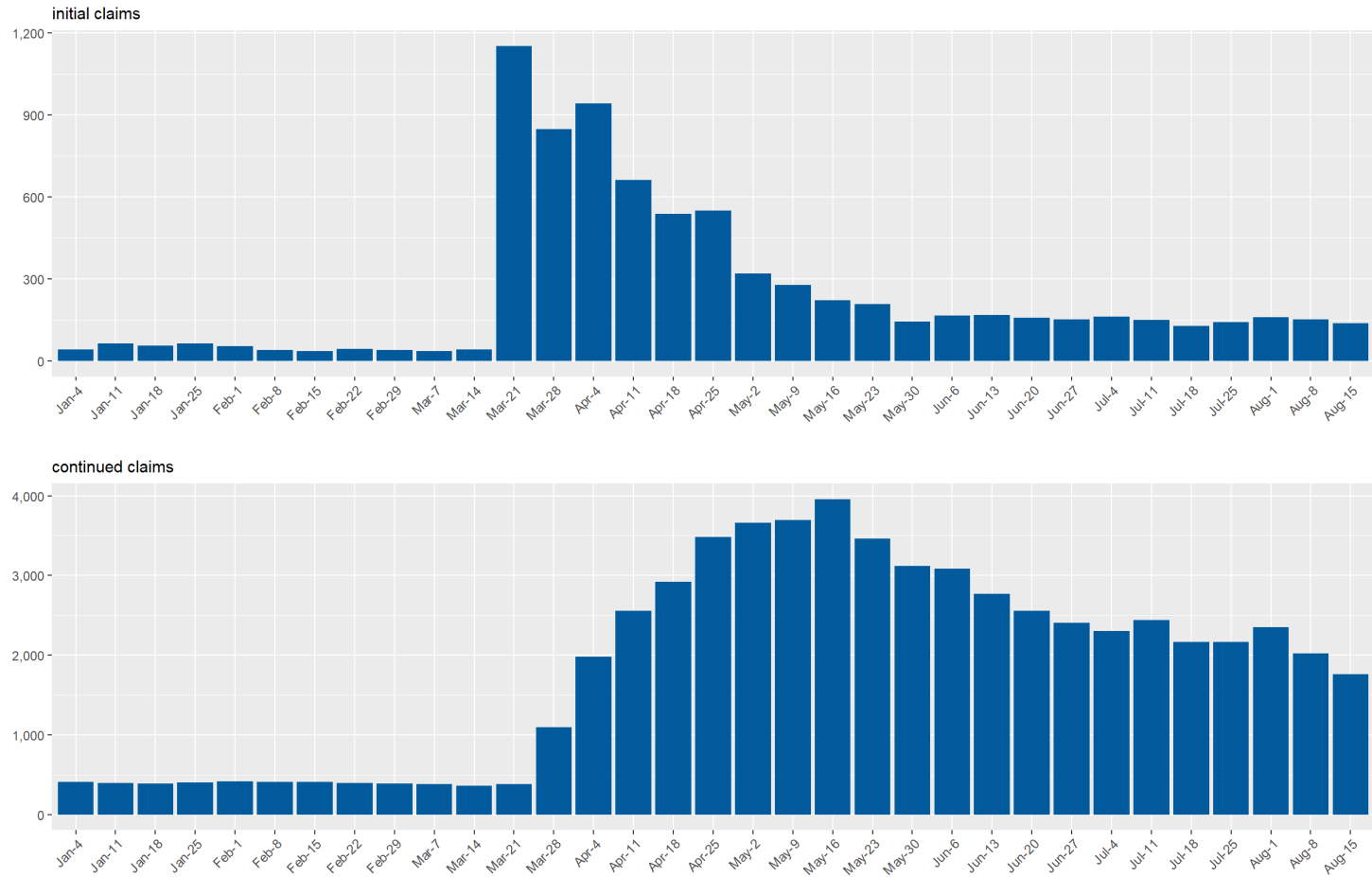
County	2020-08-09	2020-08-10	2020-08-11	2020-08-12	2020-08-13	2020-08-14	2020-08-15	Total
Carson City	22	29	18	17	14	8	4	112
Churchill	5	9	6	5	6	5	2	38
Clark	1,832	1,840	1,650	1,202	1,023	820	315	8,682
Douglas	14	19	17	6	6	2	1	65
Elko	7	14	6	12	10	7	3	59
Esmeralda	0	1	1	0	0	1	0	3
Humboldt	5	1	9	3	3	4	1	26
Lander	2	0	6	1	0	2	0	11
Lincoln	1	1	0	1	0	1	0	4
Lyon	24	23	20	16	14	9	1	107
Mineral	2	1	2	1	0	0	0	6
Nye	20	17	16	17	13	8	3	94
OOS	665	639	450	354	335	330	158	2,931
Pershing	0	0	0	3	1	1	0	5
Storey	1	2	0	0	0	0	0	3
Washoe	175	215	181	154	97	83	38	943
White Pine	2	3	1	2	1	0	2	11

## UI Daily Continued Claims by County for Week Ending 8/15/2020

County	2020-08-09	2020-08-10	2020-08-11	2020-08-12	2020-08-13	2020-08-14	2020-08-15	Total
Carson City	1,076	377	136	60	69	27	40	1,785
Churchill	269	96	37	16	9	8	18	453
Clark	120,660	31,632	13,468	6,582	4,596	3,518	1,737	182,193
Douglas	739	250	119	49	37	49	28	1,271
Elko	587	187	64	39	36	26	18	957
Esmeralda	8	1	1	0	0	2	0	12
Eureka	16	1	0	0	0	0	0	17
Humboldt	161	54	29	6	7	14	2	273
Lander	77	25	18	3	19	2	6	150
Lincoln	34	13	4	5	1	1	1	59
Lyon	922	331	117	66	86	54	19	1,595
Mineral	58	8	8	4	3	2	0	83
Nye	989	282	97	60	21	14	8	1,471
OOS	7,895	4,095	2,196	1,606	1,184	1,015	775	18,766
Pershing	24	7	6	1	0	1	1	40
Storey	27	9	4	0	2	1	0	43
Washoe	9,988	3,430	1,618	779	614	490	187	17,106
White Pine	89	18	7	6	2	5	1	128

# UI Claims for Carson City

Carson City Unemployment Insurance Claims by Week  
since January 2020

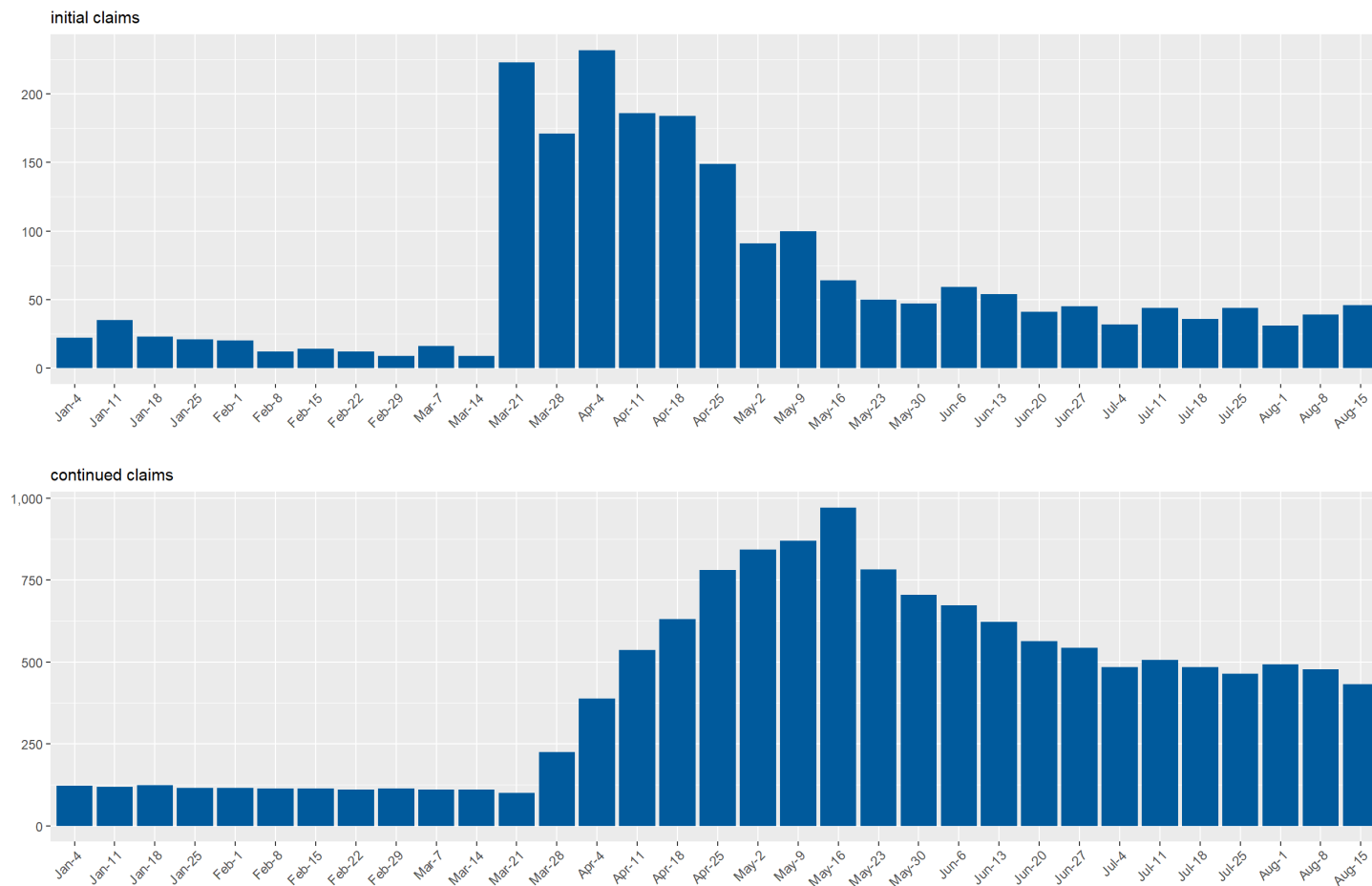


Source: DETR Internal Reporting



# UI Claims for Churchill County

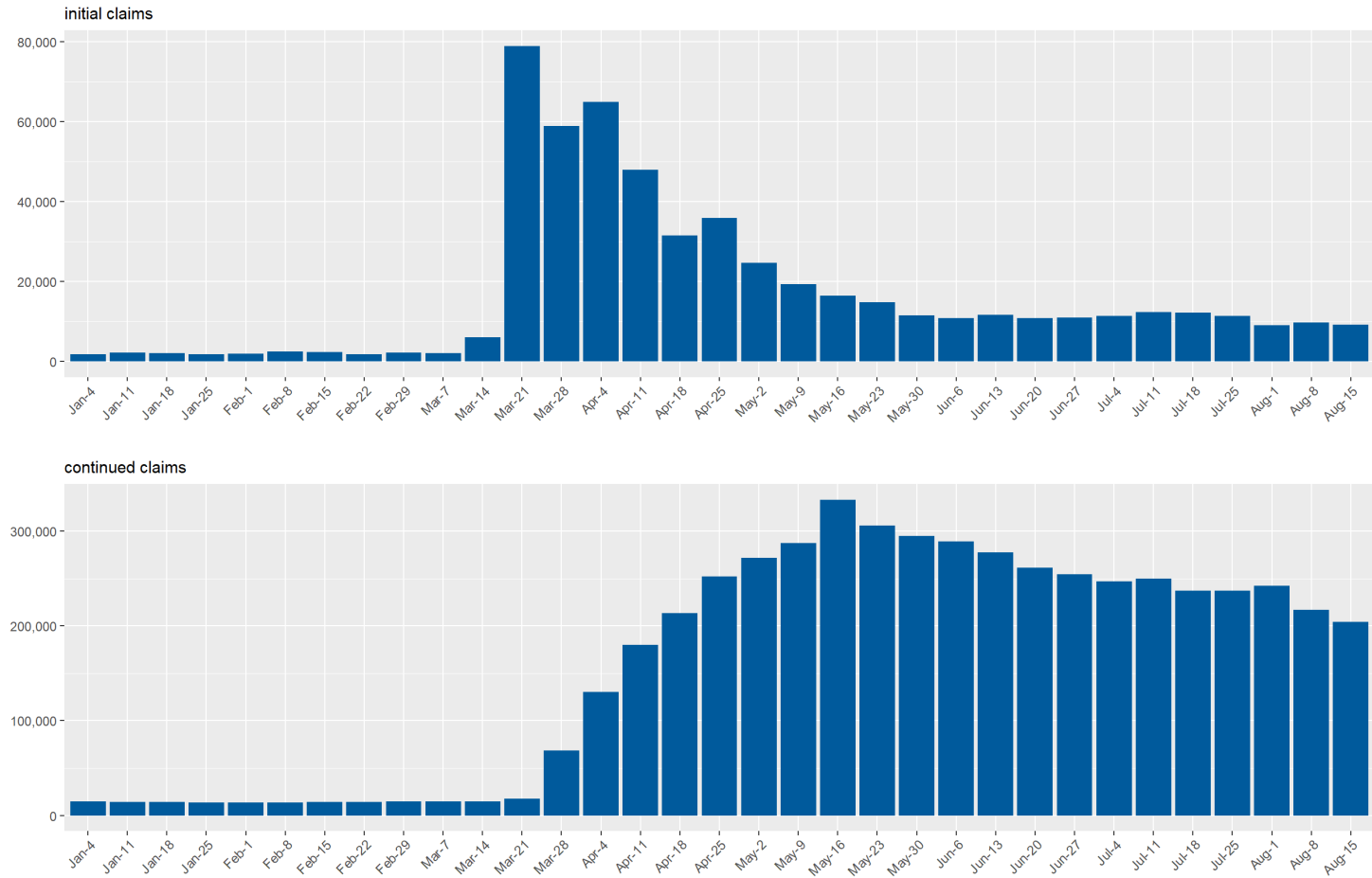
Churchill County Unemployment Insurance Claims by Week  
since January 2020



Source: DETR Internal Reporting

# UI Claims for Clark County

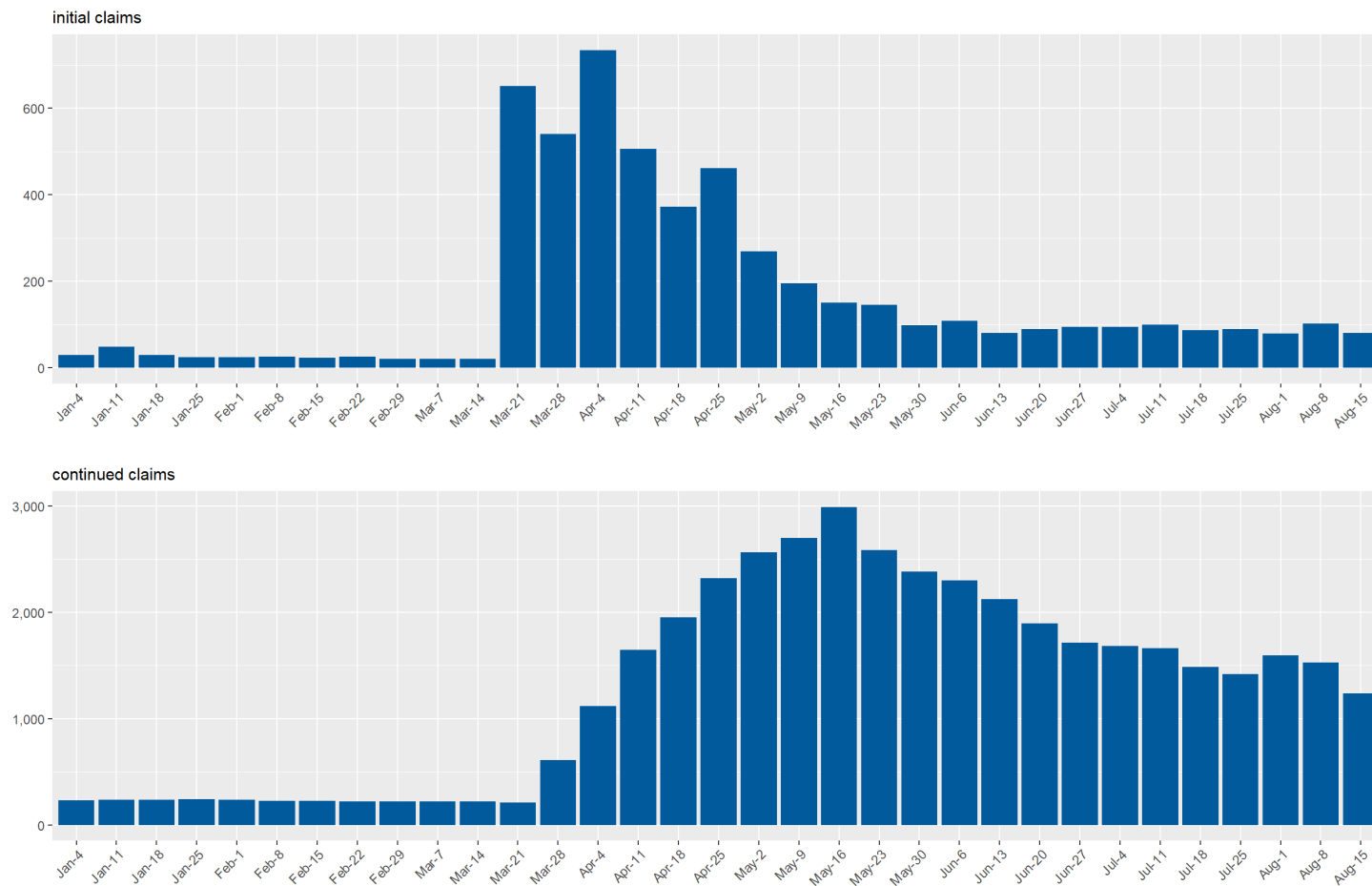
Clark County Unemployment Insurance Claims by Week  
since January 2020



Source: DETR Internal Reporting

# UI Claims for Douglas County

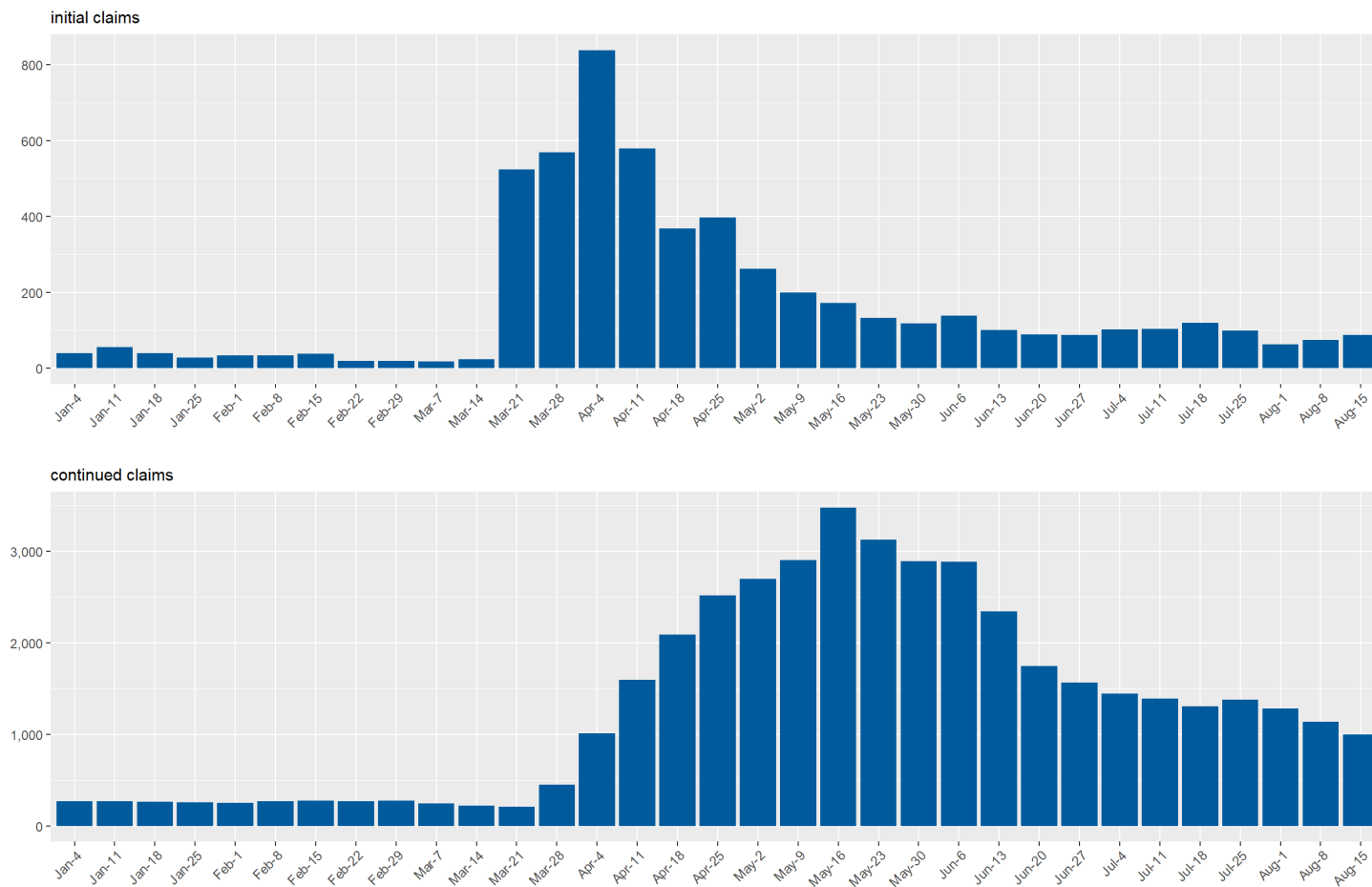
Douglas County Unemployment Insurance Claims by Week  
since January 2020



Source: DETR Internal Reporting

# UI Claims for Elko County

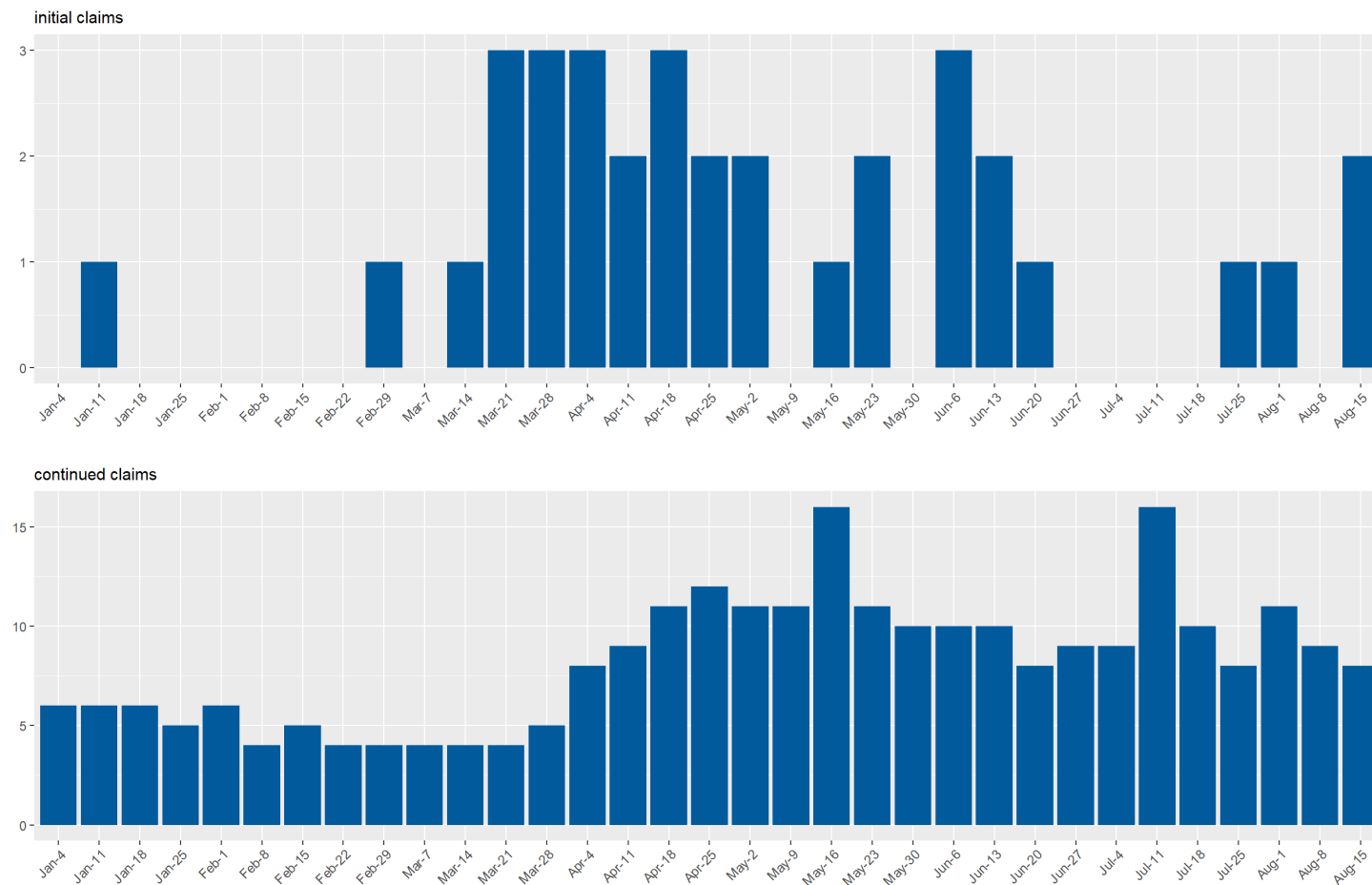
Elko County Unemployment Insurance Claims by Week  
since January 2020



Source: DETR Internal Reporting

# UI Claims for Esmeralda County

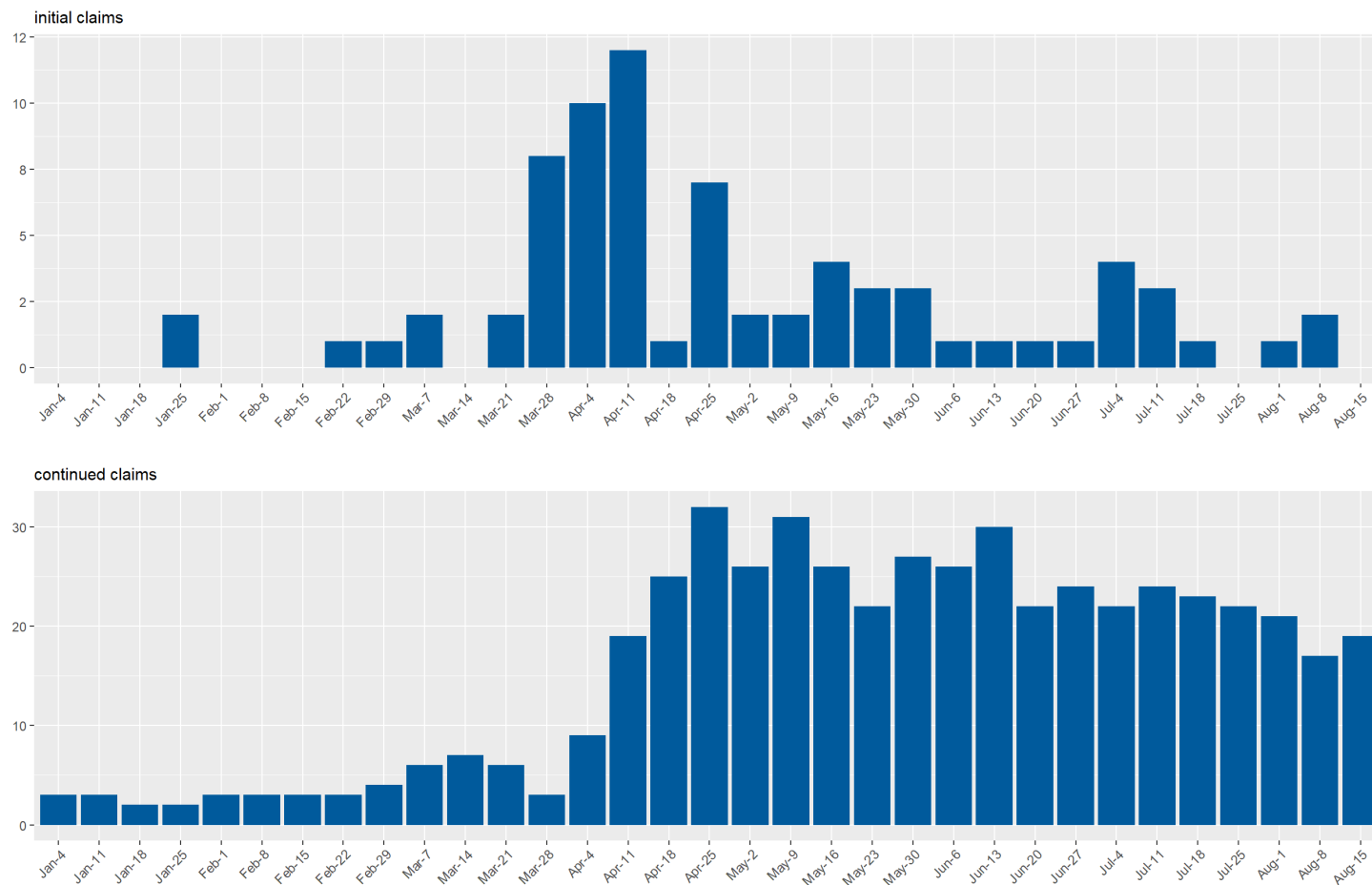
Esmeralda County Unemployment Insurance Claims by Week  
since January 2020



Source: DETR Internal Reporting

# UI Claims for Eureka County

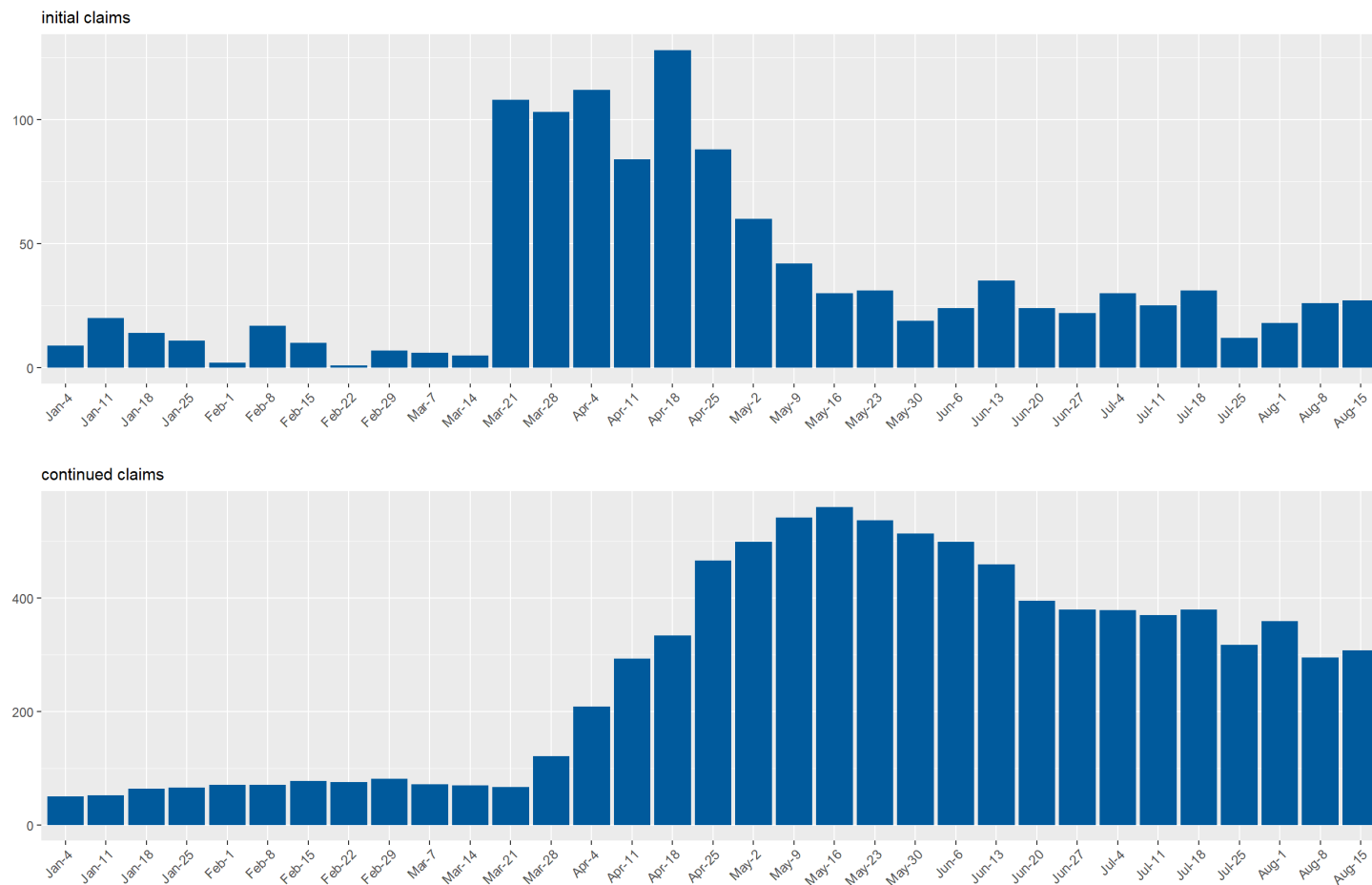
Eureka County Unemployment Insurance Claims by Week  
since January 2020



Source: DETR Internal Reporting

# UI Claims for Humboldt County

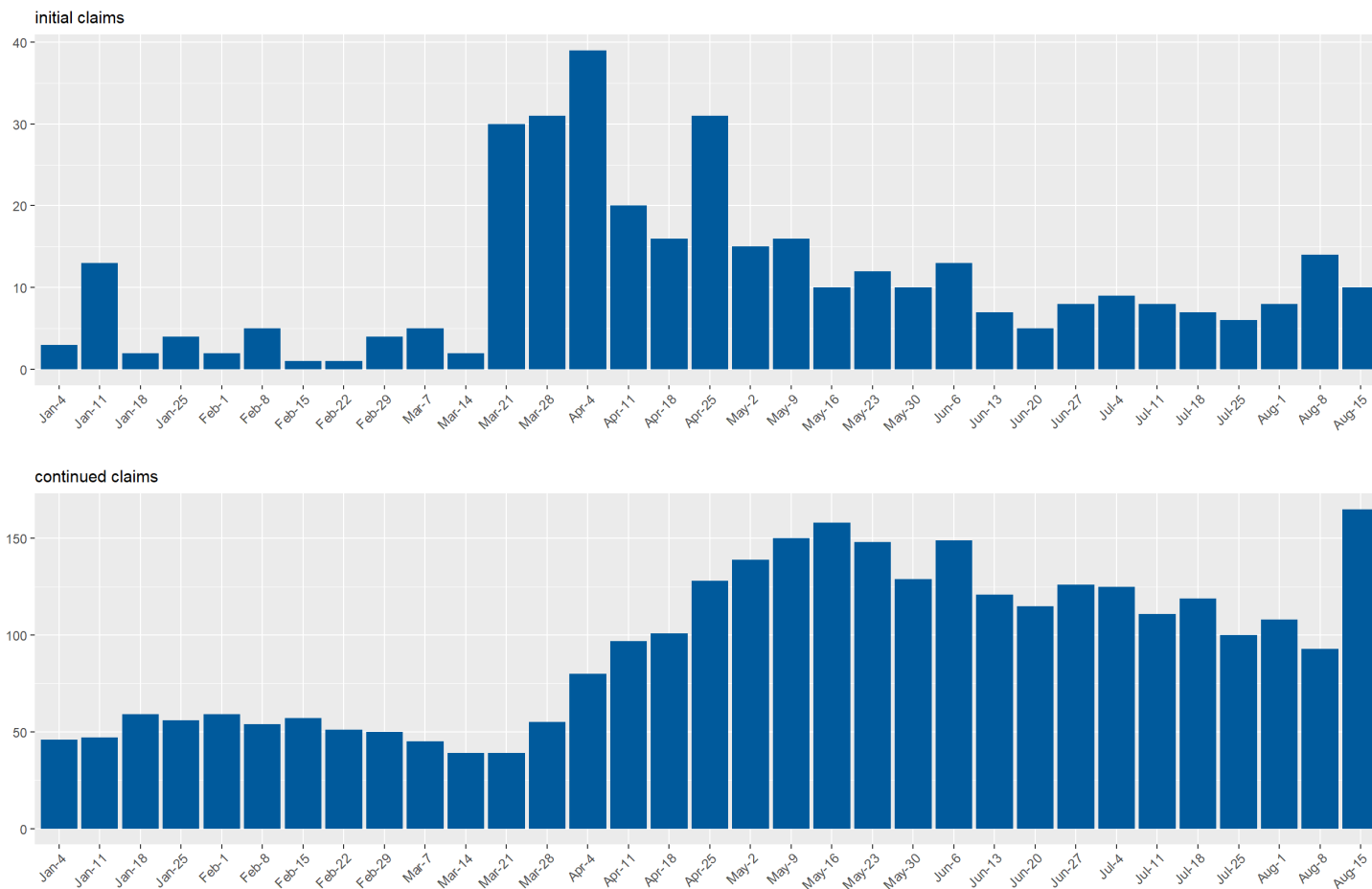
Humboldt County Unemployment Insurance Claims by Week  
since January 2020



Source: DETR Internal Reporting

# UI Claims for Lander County

Lander County Unemployment Insurance Claims by Week  
since January 2020

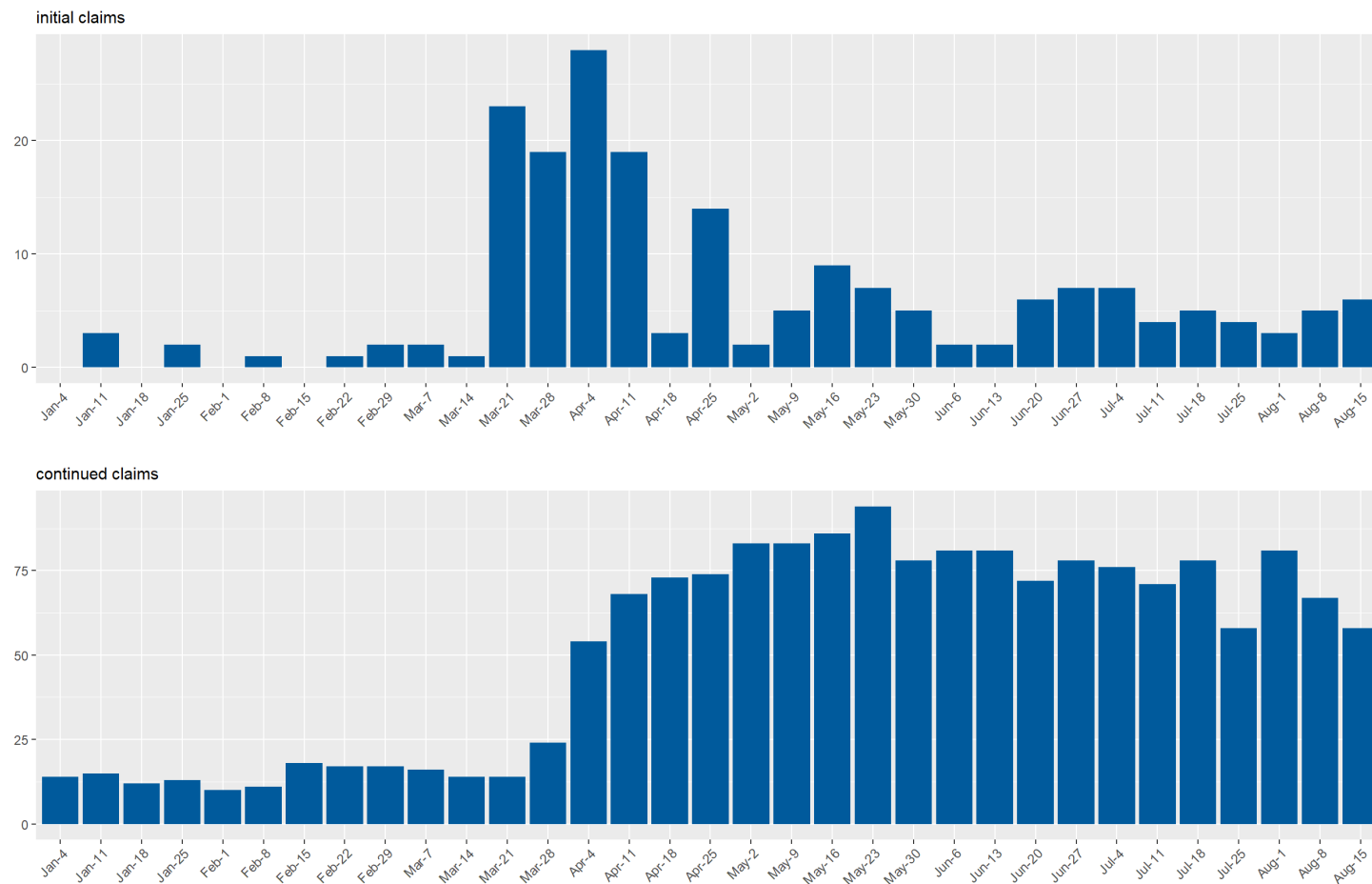


Source: DETR Internal Reporting



# UI Claims for Lincoln County

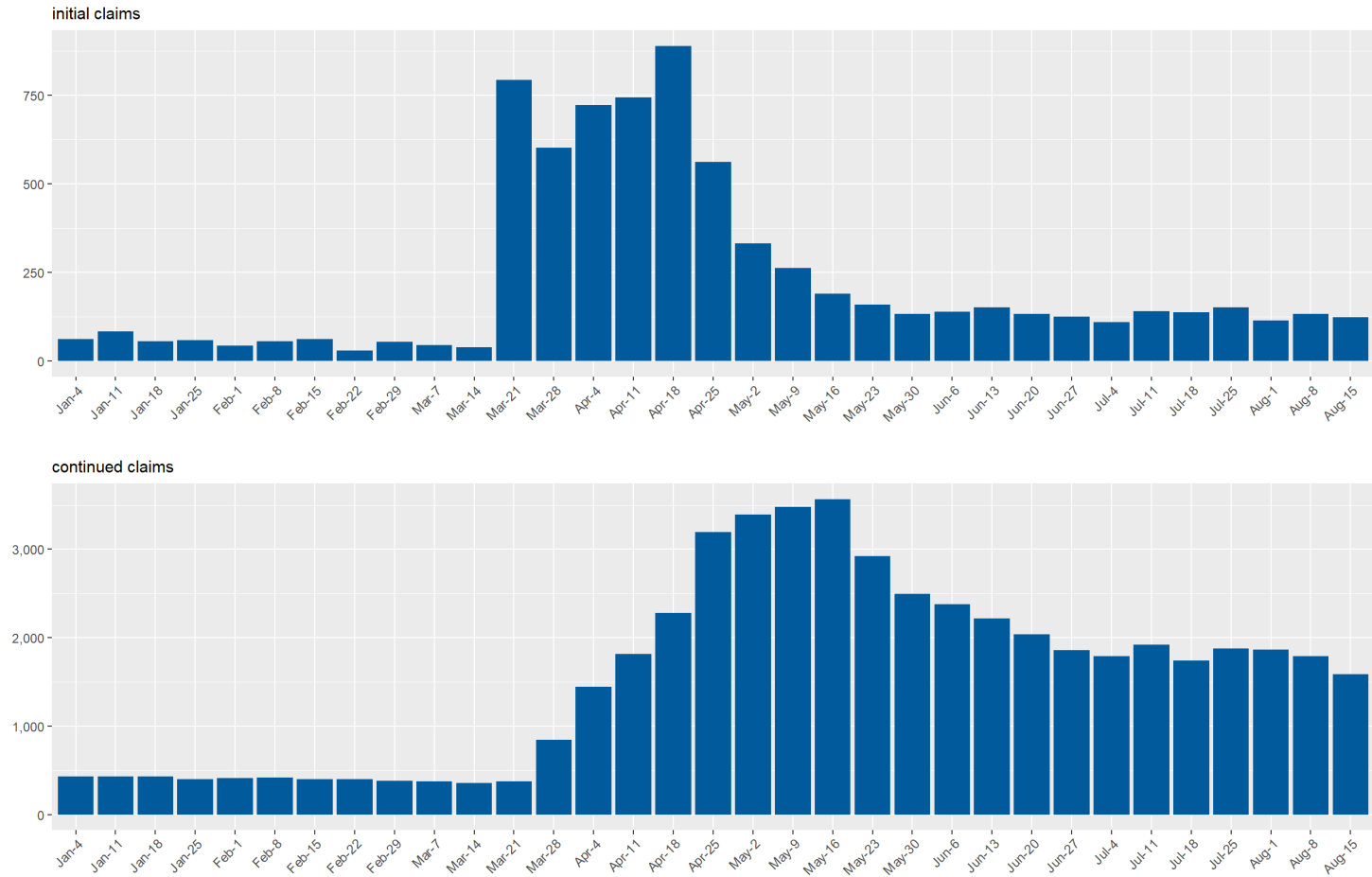
Lincoln County Unemployment Insurance Claims by Week  
since January 2020



Source: DETR Internal Reporting

# UI Claims for Lyon County

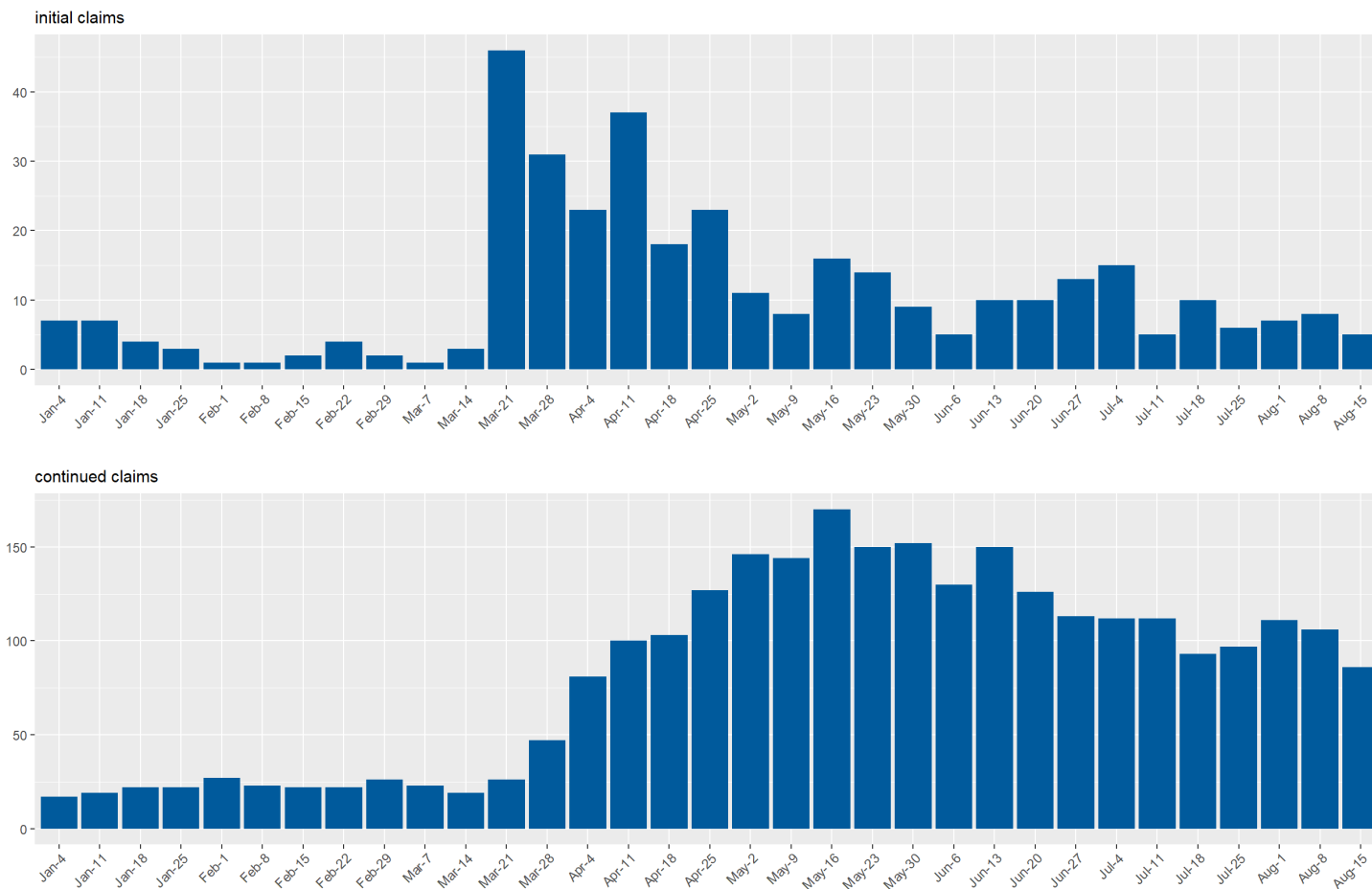
Lyon County Unemployment Insurance Claims by Week  
since January 2020



Source: DETR Internal Reporting

# UI Claims for Mineral County

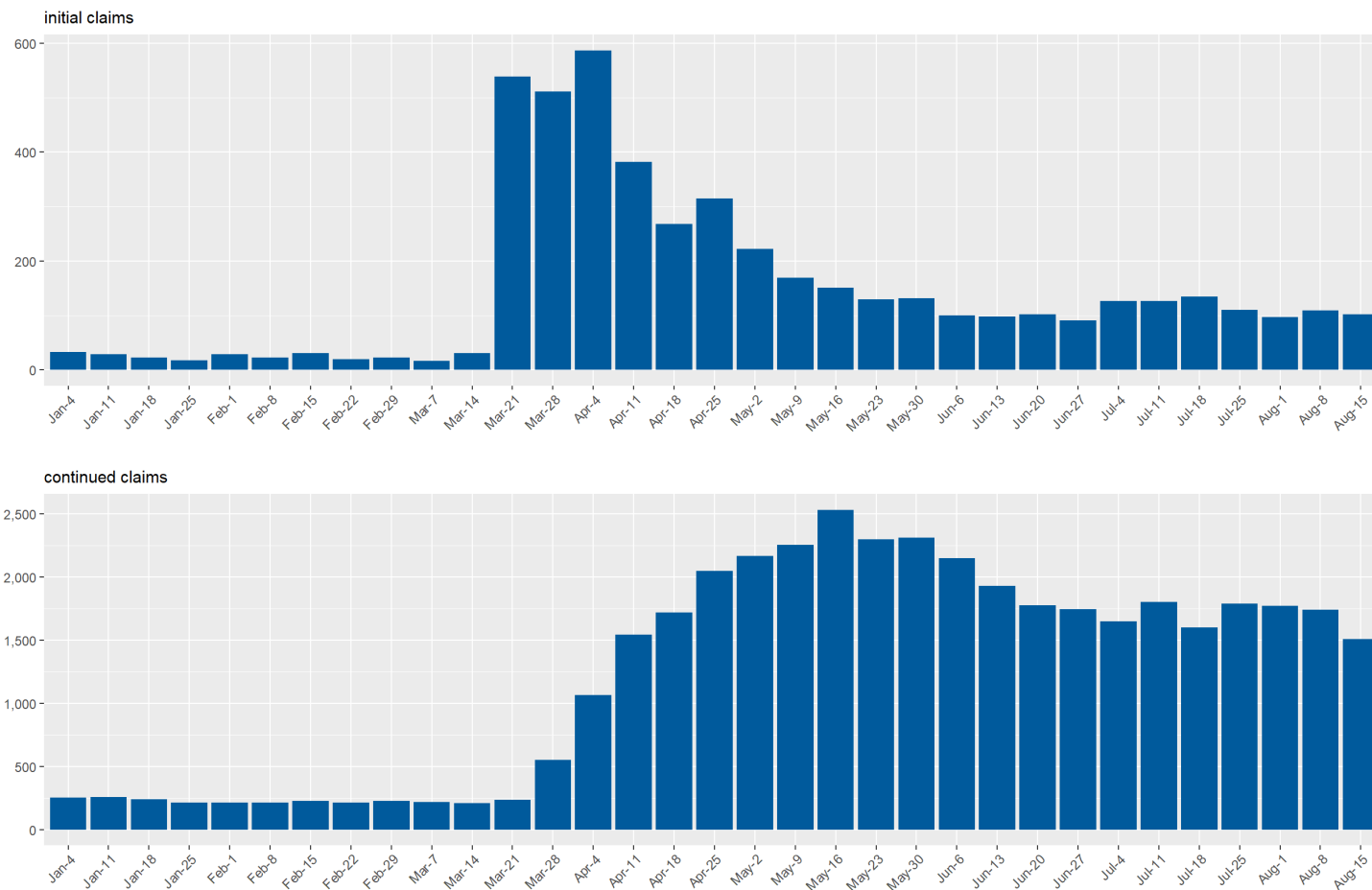
Mineral County Unemployment Insurance Claims by Week  
since January 2020



Source: DETR Internal Reporting

# UI Claims for Nye County

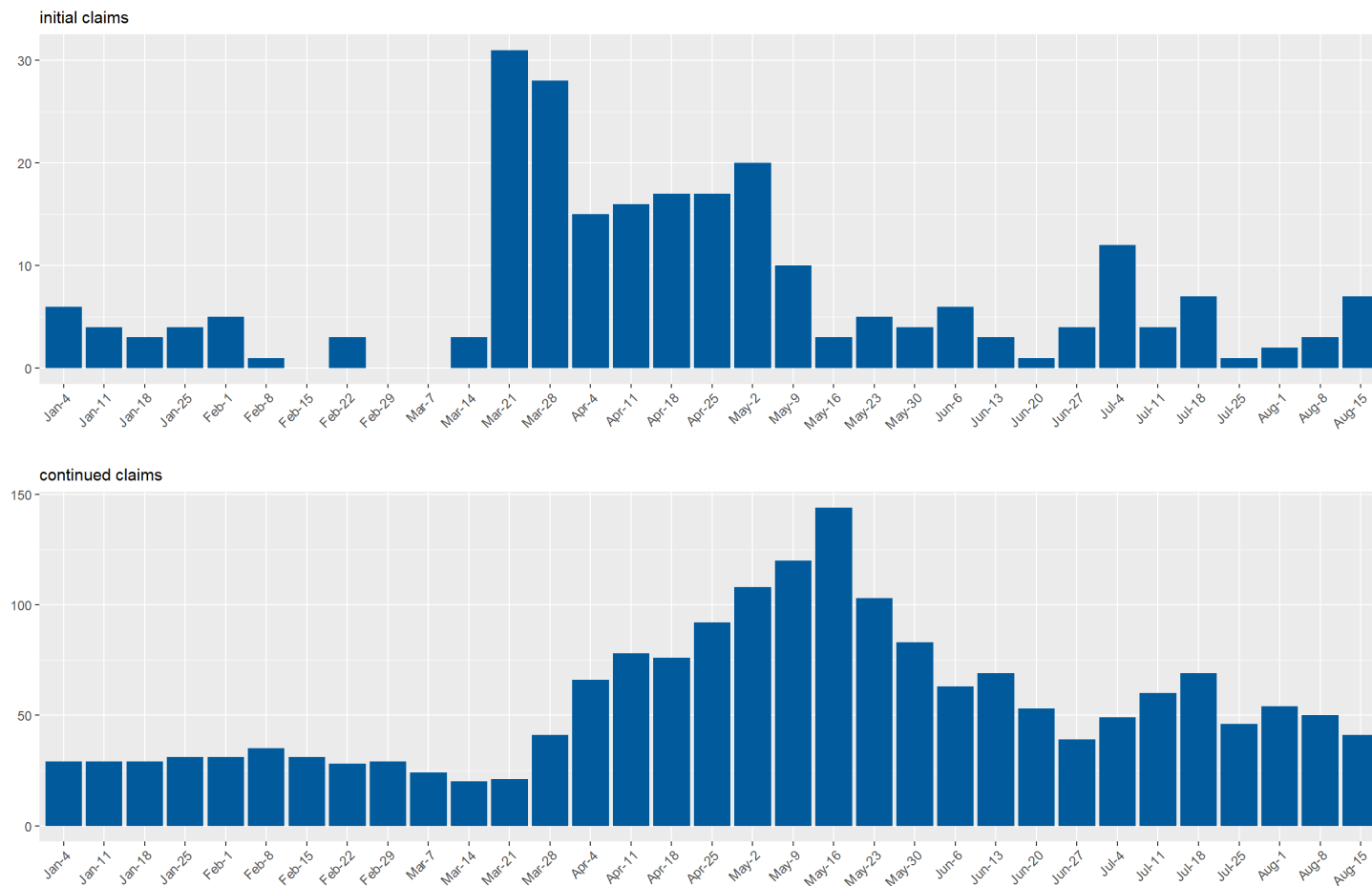
Nye County Unemployment Insurance Claims by Week  
since January 2020



Source: DETR Internal Reporting

# UI Claims for Pershing County

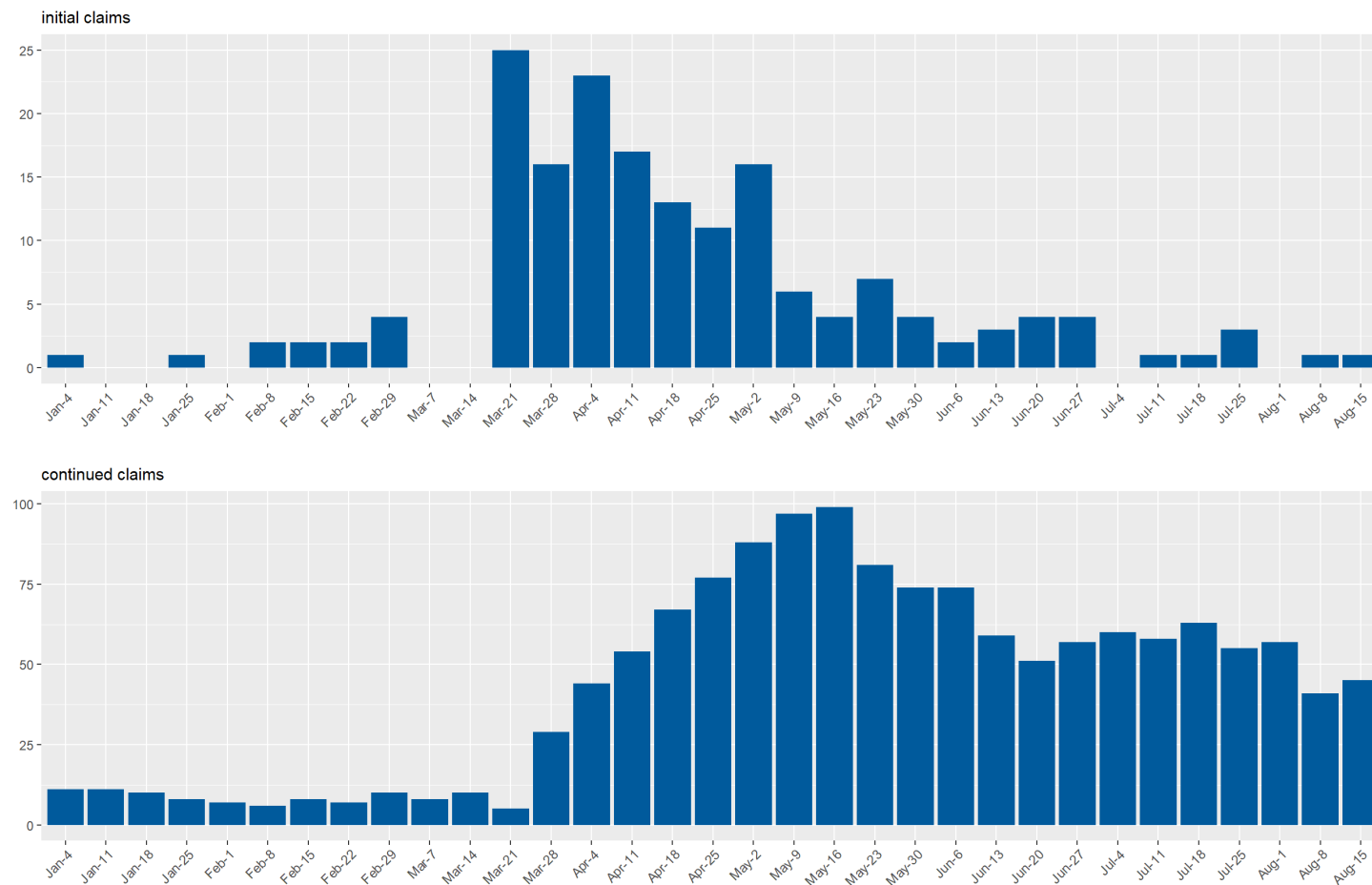
Pershing County Unemployment Insurance Claims by Week  
since January 2020



Source: DETR Internal Reporting

# UI Claims for Storey County

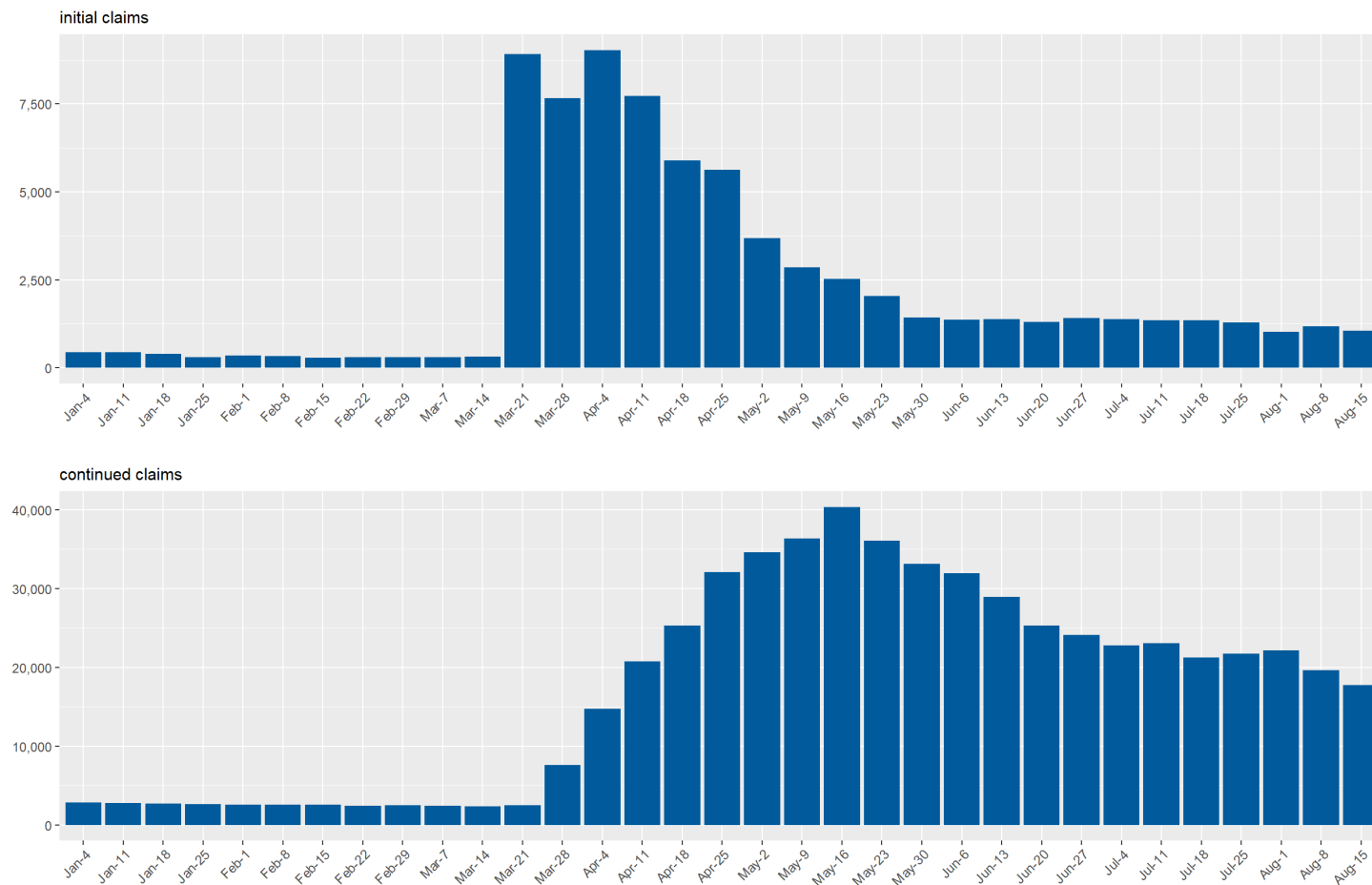
Storey County Unemployment Insurance Claims by Week  
since January 2020



Source: DETR Internal Reporting

# UI Claims for Washoe County

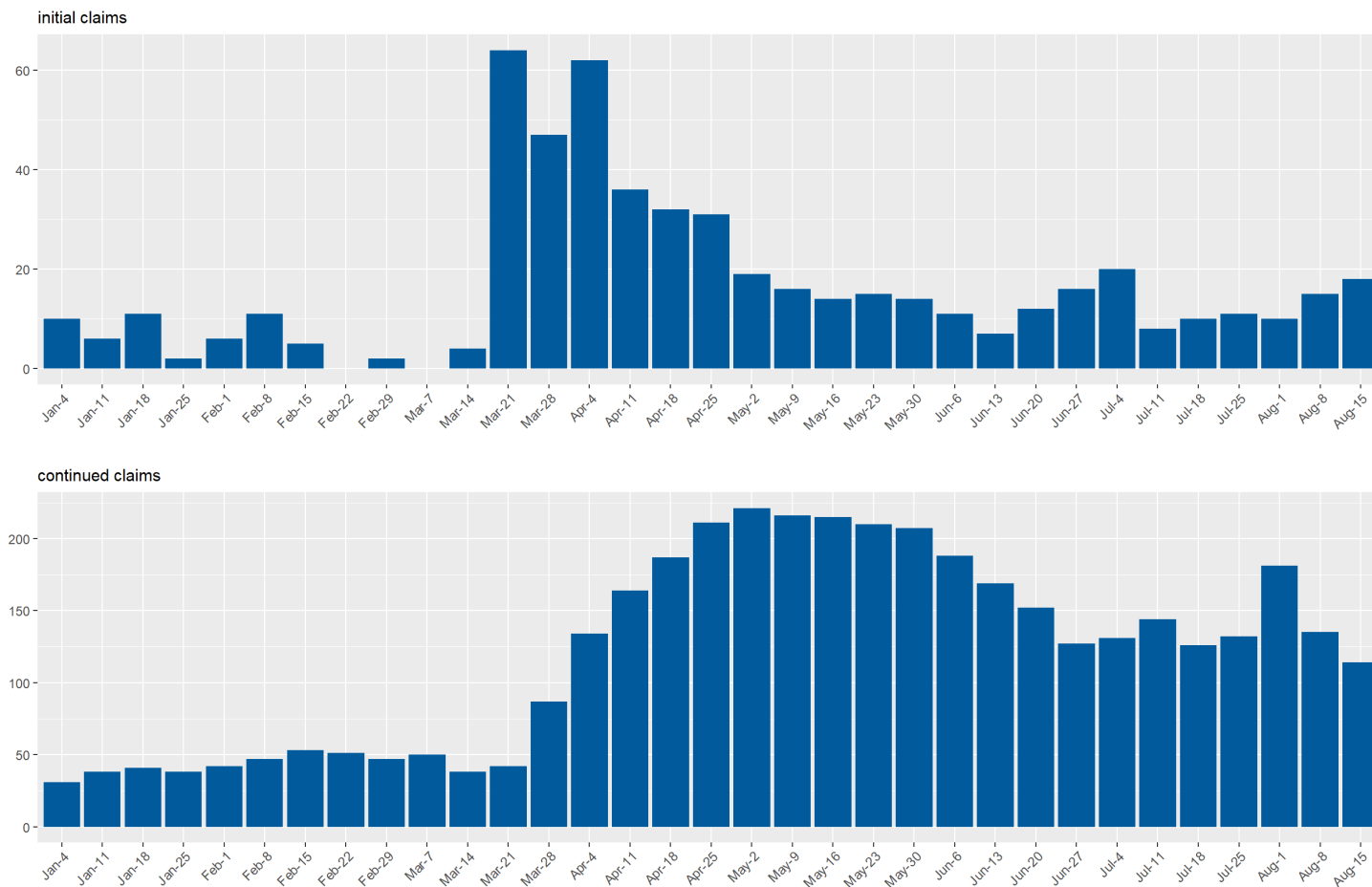
Washoe County Unemployment Insurance Claims by Week  
since January 2020



Source: DETR Internal Reporting

# UI Claims for White Pine County

White Pine County Unemployment Insurance Claims by Week  
since January 2020



Source: DETR Internal Reporting



# Data Dashboard Page

In effort to limit the overall length of this report, an interactive report was created that includes weekly data for all programs. This data is available for download on the "Data" tab of the Weekly Claims Characteristics by Program report below.

## Weekly Reports

### Weekly Claims Dashboard

The claims data contained on the ETA 539 report are used in current economic analysis of unemployment trends in Nevada.

### Weekly Claims Characteristics by Program

This report provides weekly information about the characteristics of claimants in Nevada for all programs.

### Weekly Claims by County

The claims data contained in this dashboard provide unemployment insurance trends by county in the State of Nevada. This dashboard allows for exploration of these trends.

## Monthly Reports

### Monthly Claims Dashboard

The ETA 5159 report contains monthly information on claims activities and on the number and amount of payments under state unemployment insurance laws. The data on this report provides the basis for many common UI measures such as average duration, exhaustion rates, weeks compensated, and benefits paid. This dashboard allows for exploration of these measures and trends in the State of Nevada.

### Monthly Claims Demographics

The ETA 203 report provides information about the characteristics of Unemployment Insurance (UI) claimants in Nevada. This data is useful in describing the population of claimants and determining how that population changes over time and under various conditions. It can also be compared with characteristic figures of the total unemployed as published by the Bureau of Labor Statistics (BLS).

# Glossary of Terms

**Initial Claim:** Any notice of unemployment filed to request a determination of eligibility for unemployment insurance benefits, or to begin a subsequent period of eligibility within a period of eligibility. Initial claims measure emerging unemployment in the state.

**Additional Claim:** An initial Claim which reopens a previously existing claim, where the claimant stopped filing due to intervening employment.

**Reopened Claim:** A reopened claim is filed if you have previously filed a claim but never submitted any weekly claims.

**Continued Claim:** After an initial claim determines a claimant is eligible for unemployment insurance benefits, the claimant's weekly benefit claims are counted under continued claims. Continued claims in aggregate represents the insured unemployed receiving benefits in the state, and is used for economic purposes.

## Credits

Special thanks to all the R and RStudio developers that built the packages to make this possible!

Packages used in this report: xaringan, xaringanthemer, tidyverse, rmarkdown, viridis, scales, data.table, RcppRoll, kableExtra, knitr, patchwork, ggforce, ggthemes

Prepared by:  
Department of Employment, Training & Rehabilitation  
Research & Analysis Bureau